

Temple City

Trim Line

8" M. 30. 0.20 - 1/4" AND 2 3/4" 3/4" LEAD
IN EAST CURB OF GOLDEN WEST AVE.
AT S.E. COR. DUARTE ROAD 10' S. OF
CURB RETURN.

NOTE: NO REPRESENTATIVE OF THE COUNTY ENGINEER WILL SURVEY OR LAY OUT ANY PORTION OF THE WORK.
THE OWNER OR HIS AUTHORIZED REPRESENTATIVE SHALL FURNISH THE COUNTY ENGINEER WITH GRADE SHEETS AND STATIONS FOR ALL HOUSE CONNECTIONS AND Y BRANCHES AND SHALL PROVIDE STAKES FOR THEM AT THEIR PROPER LOCATIONS WITH STATIONING PLAINLY MARKED. ANY CHANGE IN LOCATION SHALL BE REQUESTED IN WRITING BY THE OWNER OR HIS REPRESENTATIVE.
NO REVISIONS SHALL BE MADE IN THESE PLANS WITHOUT APPROVAL OF THE COUNTY ENGINEER.

1. USE STANDARD MANHOLE FRAMES AND COVERS, S-8-117
2. USE STANDARD STRENGTH PIPE EXCEPT AS NOTED
3. USE CEMENT MORTAR FOR ALL WIDENED CLAY PIPE JOINTS
4. RESURFACE ALL TRENCH WITHIN PARKED AREA TO MEET L.A. COUNTY ROAD DEPT. REQUIREMENTS
5. ENCASE FOUR FEET OF SEWER AT POINTS OF INTERFERENCE WITH POLES, S-8-119.
6. HOUSE CONNECTIONS TO BE CONSTRUCTED WITH INLETS AT PROPERTY LINE 5' BELOW CURB GRADE.
7. ALL STRUCTURES SHALL BE BRICK SEWER STRUCTURES, S-8-104
8. PROVIDE STAKES ON THE PROPERTY LINES OR PROPLETHY LINES PRODUCED AT RIGHT ANGLES TO THE SEWER LINE AT THE CENTER LINE OF EACH MANHOLE
9. SPOPPERS TO BE INSTALLED WITH JOINT COMPOUND BY MANUFACTURER AT HIS OWN RISK, SEC. 84.08
10. CONCRETE PAVEMENT TO BE CUT NOT LESS THAN 2" IN DEPTH WITH CONC. SAW SPEC'S. SEC. 65
11. INSTALL WIRE AND TAGS. SPEC'S. SEC. 68.

PROFILE, ALIGNMENT, AND GRADE OF
SANITARY SEWERS
TO BE CONSTRUCTED IN

P.C. 2384
J.N.F. 248
Page 1.

TRACT NO. 16897

(15,738)

PRIVATE CONTRACT NO. 2384
W.S. 44

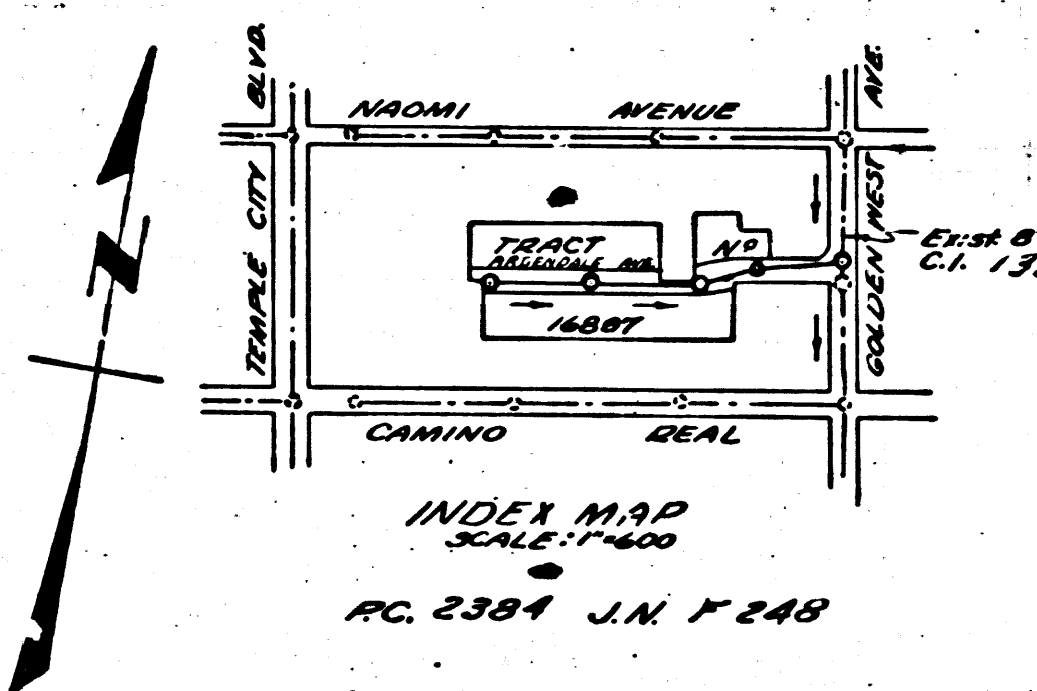
SCALE: VERT: 1"=4'
HORIZ: 1"=40'

SEPTEMBER 5, 1952

PREPARED IN THE OFFICES OF
M.W. FINLEY, SURVEYOR
BY *Leon W. Moore*

Reg. C.E. N. 3157

FOR LEGEND SEE PLAN NO. S-8-64



SHEET NO.	PAGES
1	1-2
2	-
3	-
4	-
5	-
6	-
7	-

NOTE: GRADES TO WHICH THIS IMPROVEMENT IS TO BE CONSTRUCTED ARE SHOWN ON PLANS AND PROFILES. GRADE POINTS FOR TOP OF CURBS, CENTER LINE OF STREETS OR CENTER LINE OF ALLEY ARE SHOWN BY CIRCLES ON PROFILES. AT ALL POINTS BETWEEN DESIGNATED POINTS THE GRADE SHALL BE ESTABLISHED SO AS TO CONFORM TO A STRAIGHT LINE DRAWN BETWEEN SAID DESIGNATED POINTS.
ELEVATIONS ARE IN FEET ABOVE U.S.C. DATUM OR MEAN SEA LEVEL.
THIS DRAWING AND THE DATA HEREON ARE HEREBY MADE A PART OF THE SPECIFICATIONS.
WORK SHALL BE CONSTRUCTED ACCORDING TO SPECIFICATIONS ON FILE IN THE OFFICE OF THE COUNTY ENGINEER AND SHALL BE PROSECUTED ONLY IN THE PRESENCE OF THE COUNTY ENGINEER.
BEFORE WORK CAN BE STARTED THE CONTRACTOR MUST OBTAIN A PERMIT TO EXCAVATE IN COUNTY STREETS FROM THE L.A. COUNTY ROAD DEPT., 100 W. 2nd ST. AND MAKE A DEPOSIT WITH THE COUNTY ENGINEER, 733 L.A. COUNTY ENGINEERING BLDG. SUFFICIENT TO COVER THE COST OF CONSTRUCTION INSPECTION AND RECORD PLANS.
APPROVAL OF THIS PLAN BY THE COUNTY OF LOS ANGELES DOES NOT CONSTITUTE A REPRESENTATION AS TO THE ACCURACY OF THE LOCATION OF OR THE EXISTENCE OR NON-EXISTENCE OF ANY UNDERGROUND UTILITY, PIPE, OR STRUCTURE WITHIN THE LIMITS OF THIS PROJECT. THIS NOTE APPLIES TO ALL SHEETS.

COUNTY OF LOS ANGELES, CALIFORNIA
APPROVED, WILLIAM J. FOX COUNTY ENGINEER
BY *W. J. Fox*
CHIEF DEPUTY

APPROVED, AM. EAWIN
CHIEF ENGINEER SAN. DIST. NO. 15
BY *Am. Eawin*
OFFICE ENGINEER

checked 1-27-53 *McLaren*

CHECKED BY: *Richard E. Kahan* 10-14-52
OFFICE OF COUNTY ENGINEER, REG. CE No. 1869

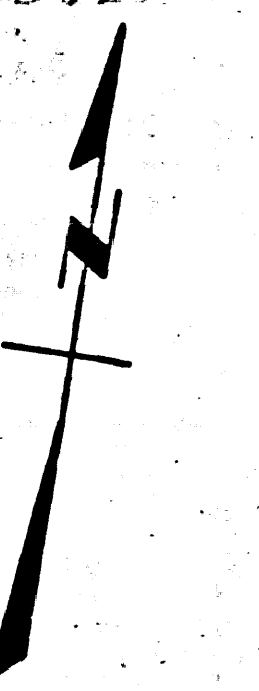
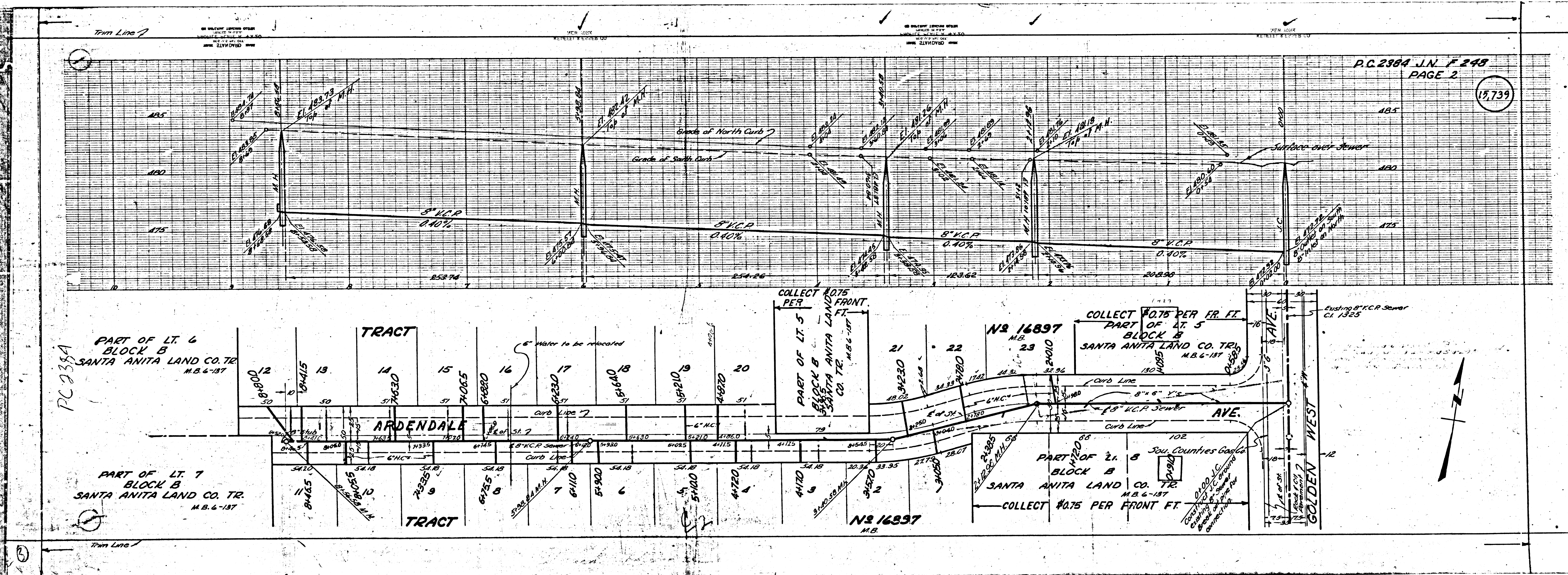
RECEIVED
JAN 8 1953
L.A. COUNTY ENGINEER
SANITATION DIVISION

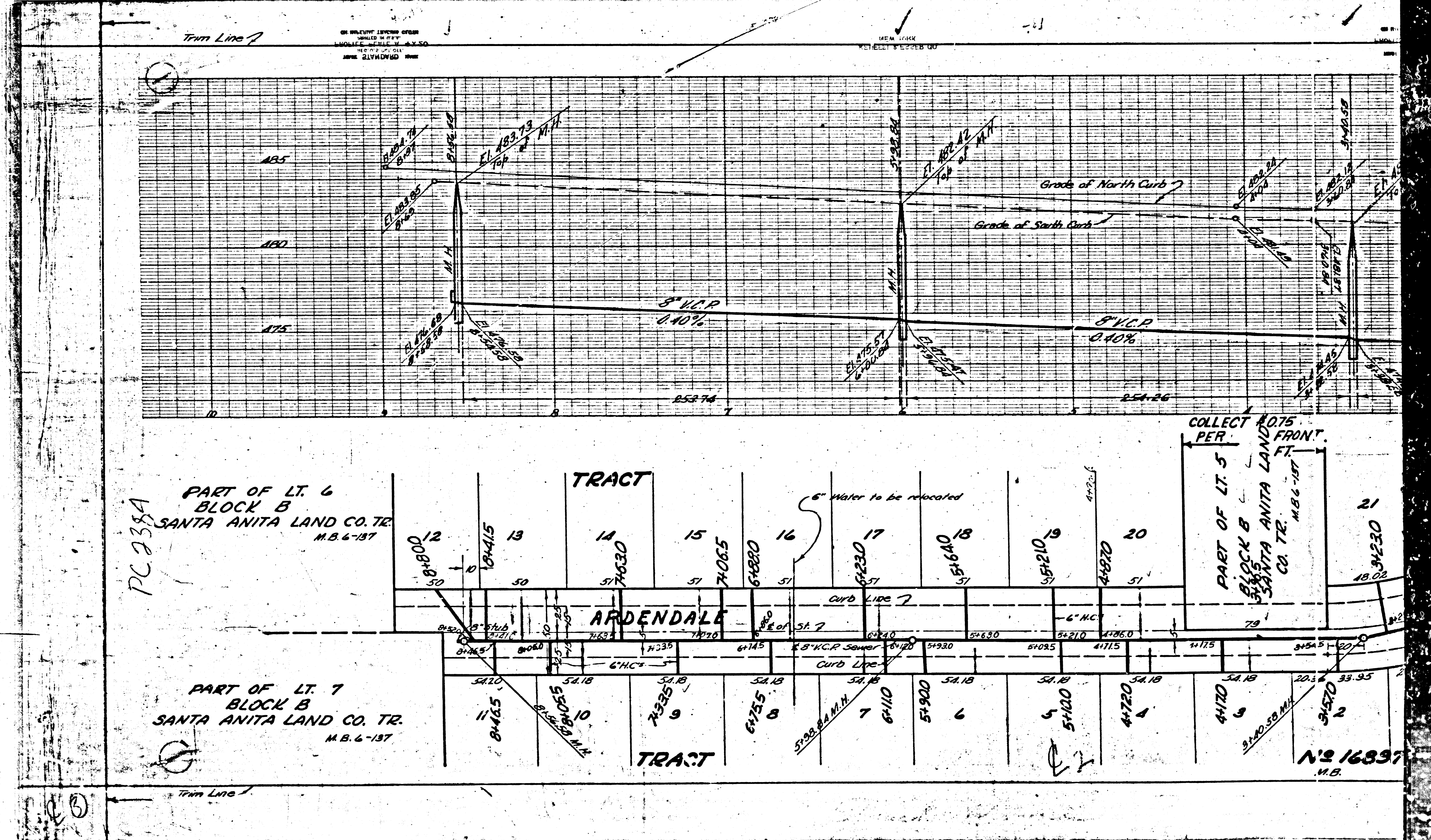
(15,739)

(15,738)

Trim Line

15,739





PC 238A
PART OF LT. 6
BLOCK B
SANTA ANITA LAND CO. TR.
M.B. 6-187

TRACT

12 13 14 15 16 17 18 19 20 21
400012 10415 13 50 374030 15 71005 64020 51 64020 51 51640 31 54210 4224 4020 21 3220

ARDENDALE

PC 238A
PART OF LT. 7
BLOCK B
SANTA ANITA LAND CO. TR.
M.B. 6-187

TRACT

3 4 5 6 7 8 9 10 11 12
5420 5418 5416 5414 5412 5410 5400 5418 5416 5414 5412 5410 4720 5418 5416 5414 5412 5410 3250 33.95

COLLECT 1.075
PER
FRONT
FT.

N^o 16337
M.B.