

SUB. F.B. 1224,
Sandy Man in
Hudson Aves.

PUENTE

Trim Line

PROFILE, ALIGNMENT AND GRADE OF
SANITARY SEWERS
TO BE CONSTRUCTED IN
TRACT NO. 18056

PC. 2387
J. N. F 251
Page 1.
of 4 pgs.

16,350

- (1) USE STANDARD MANHOLE FRAME AND COVER, 5'-2-11/2.
- (2) USE STANDARD STRENGTH PIPE, EXCEPT AS NOTED.
- (3) USE CEMENT MORTAR FOR ALL VITRIFIED CLAY PIPE JOINTS.
- (4) RESURFACE ALL TRENCH WITHIN PAVED AREA TO MEET LOS ANGELES COUNTY ROAD DEPT PERMIT.
- (5) CONSTRUCT HOUSE LATERALS WITH INVERT AT PROPERTY LINE (6) FEET BELOW CURB GRADE, EXCEPT AS NOTED.
- (6) ALL STRUCTURES SHALL BE BRICK SEWER STRUCTURES, 5'-2-10-4.
- (7) ENCASE FOUR FEET OF SEWER AT POINTS OF INTERFERENCE WITH POLES 5'-2-11-9.
- (8) FOR ALLOWABLE LEAKAGE TEST, USE FORMULA NO. 1, SPEC'S SEC. 51.

PRIVATE CONTRACT NO. 2387
W 3 38
Sheet 1 of 1 Sheet
Scale: VERT. 1" = 4'
HORIZ. 1" = 40' JUNE 1952

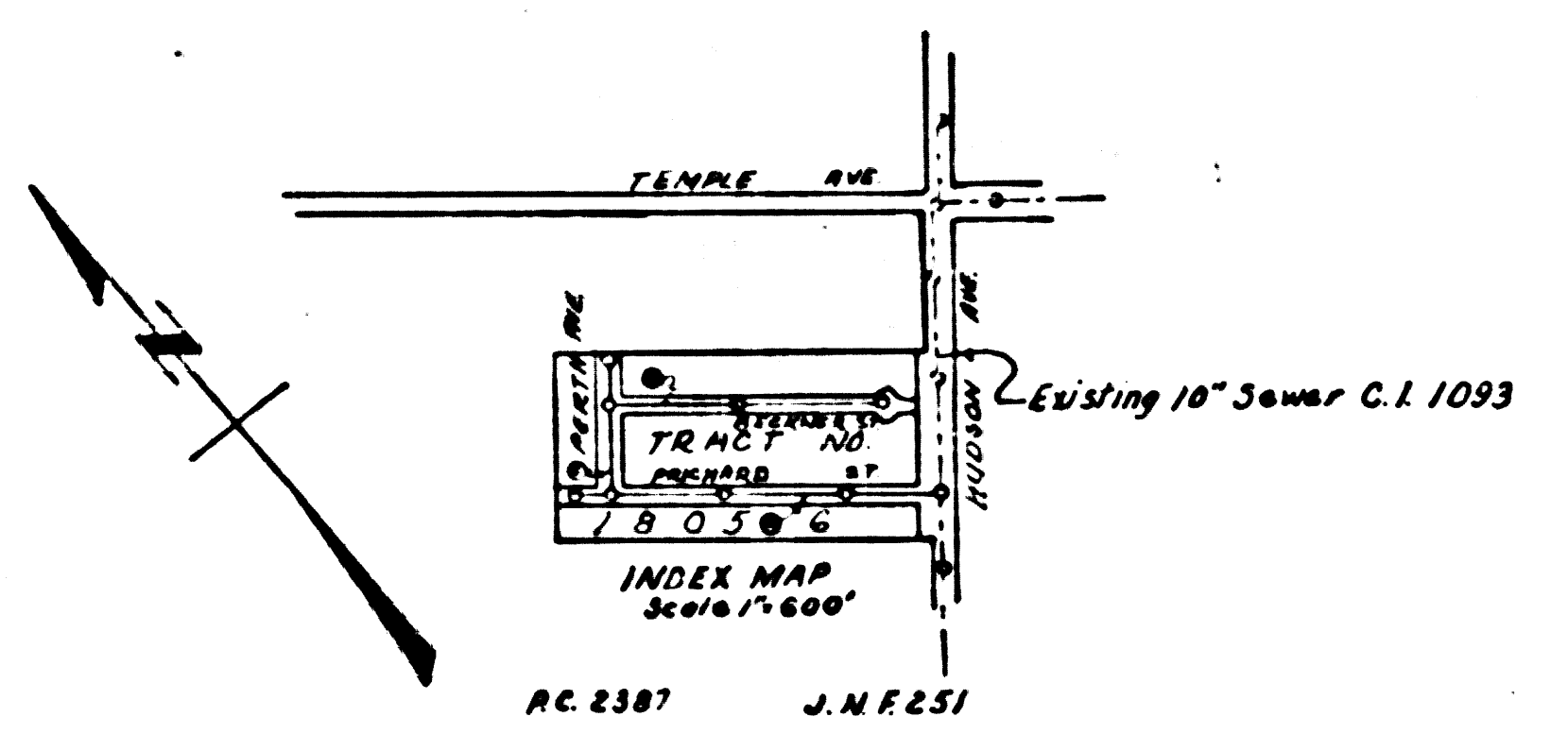
NOTE: NO REPRESENTATIVE OF THE COUNTY ENGINEER WILL SURVEY OR LAY OUT ANY PORTION OF THE WORK. THE OWNER OR HIS AUTHORIZED REPRESENTATIVE SHALL FURNISH THE COUNTY ENGINEER WITH GRADE SHEETS AND STATIONS OF ALL HOUSE CONNECTIONS AND Y BRANCHES E.T.C. SHALL PROVIDE STAKES FOR THEM AT THEIR PROPER LOCATIONS WITH STATIONING PLAINLY MARKED. ANY CHANGE OF LOCATION SHALL BE REQUESTED IN WRITING BY THE OWNER OR HIS REPRESENTATIVE. NO REVISIONS SHALL BE MADE IN THESE PLANS WITHOUT APPROVAL OF THE COUNTY ENGINEER.

NOTE: PROVIDE STAKES ON THE PROPERTY LINES OR PROPERTY LINES PRODUCED AT RIGHT ANGLES TO THE SEWER LINE AT THE CENTER LINE OF EACH MANHOLE.

PLANS PREPARED UNDER THE SUPERVISION OF:
David Withers
Registered Engineer No. 6198

FOR LEGEND
SEE PLAN NO. 3-2-64

NOTE: GRADES TO WHICH THIS IMPROVEMENT IS TO BE CONSTRUCTED ARE SHOWN ON PLANS AND PROFILE. GRADE POINTS ARE TOP OF CURB, CENTER LINE OF SIDEWALK OR CENTER LINE OF ALLEY ARE SHOWN BY CIRCLES ON PROFILES. AT ALL POINTS BETWEEN DESIGNATED POINTS THE GRADE SHALL BE ESTABLISHED SO AS TO CONFORM TO A STRAIGHT LINE DRAWN BETWEEN SAID DESIGNATED POINTS. ELEVATIONS ARE IN FEET ABOVE U. S. S. DATUM OR MEAN SEA LEVEL. THIS DRAWING AND THE DATA HEREON ARE HEREBY MADE A PART OF THE SPECIFICATIONS. WORK SHALL BE CONSTRUCTED ACCORDING TO SPECIFICATIONS ON FILE IN THE OFFICE OF THE COUNTY ENGINEER AND SHALL BE PROSECUTED ONLY IN THE PRESENCE OF THE COUNTY ENGINEER. BEFORE WORK CAN BE STARTED, THE CONTRACTOR MUST OBTAIN A PERMIT TO EXCAVATE IN COUNTY STREETS FROM THE L. A. COUNTY ROAD DEPT. JOB LINES, STAKES AND MAKE A COPY WITH THE COUNTY ENGINEER, 733 L. A. COUNTY ENGINEERS BLDG., SUFFICIENT TO COVER THE COST OF CONSTRUCTION INSPECTION AND RECORD PLANS. APPROVAL OF THIS PLAN BY THE COUNTY OF LOS ANGELES DOES NOT CONSTITUTE A REPRESENTATION AS TO THE ACCURACY OF THE LOCATION OF OR THE EXISTENCE OR NON-EXISTENCE OF ANY UNDERGROUND UTILITY, PIPE OR STRUCTURE WITHIN THE LIMITS OF THIS PROJECT.



COUNTY OF LOS ANGELES, CALIFORNIA.
WILLIAM J. FOX COUNTY ENGINEER
APPROVED BY *W. J. Fox* APPROVED BY *A. M. RAWN* OFFICE 516R
ASST. CHIEF DEPUTY CHIEF ENGINEER OF COUNTY SANITATION DISTRICT NO. 12

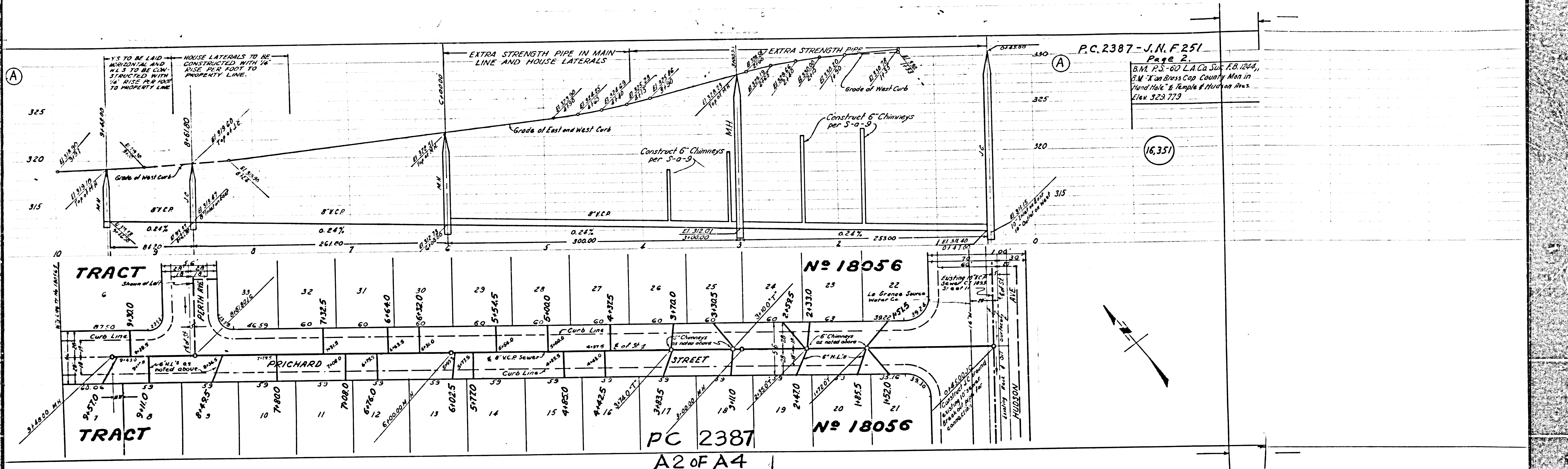
PC 2387
A1 OF A4

checked 5-20-53 *McLaren*

CHECKED BY *Richard E. Kuhn* 3-5-1953
OFFICE OF COUNTY ENGINEER, REG. C.E. NO. 7860

OR.S.

Trim Line



P.C. 2387 - J.N.F. 251
Page 2.

B.M. P.S. - 60 L.A. Co. Sub. E.B. 1244,
B.M. "X" on Brass Cap County Man in
Yard Hole & Temple & Hudson Aves.
Elev. 323.779

(16.35)

No 18056

No 18056

PC 2387

A2 of A4

(A)

(A)

TRACT

TRACT

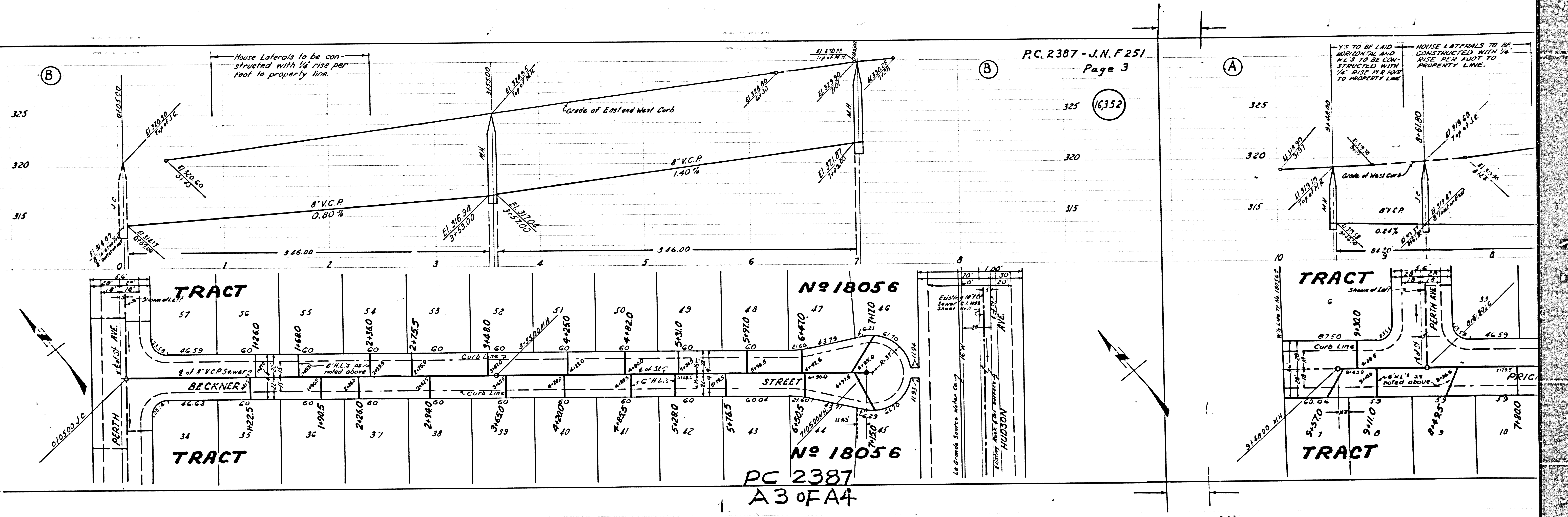
RICHARD STREET

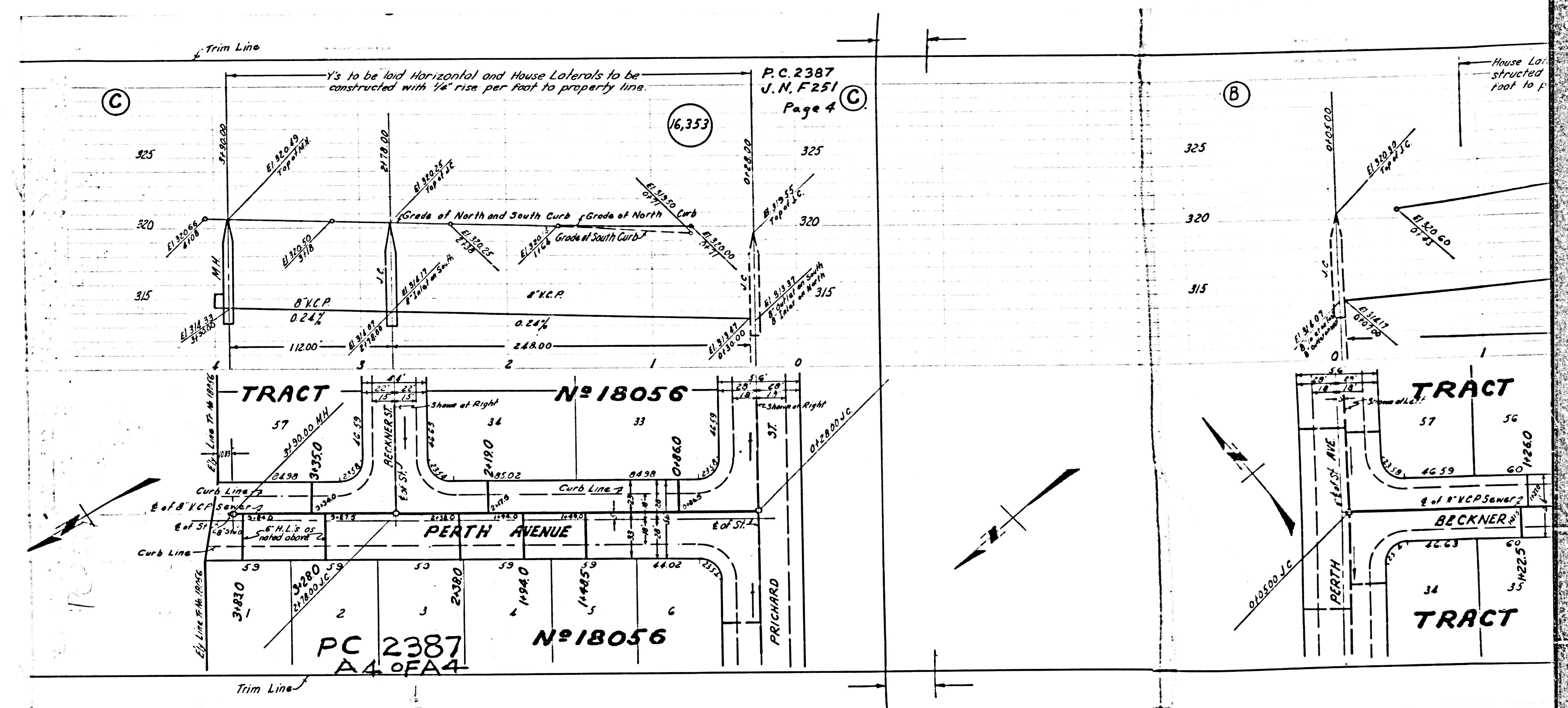
STREET

HUDSON AVE

16,352

PC 2387
A3 OF A4





Trim Line

Y's to be laid Horizontal and House Laterals to be constructed with 1/4" rise per foot to property line.

P.C. 2387
J. N. F 251
Page 4

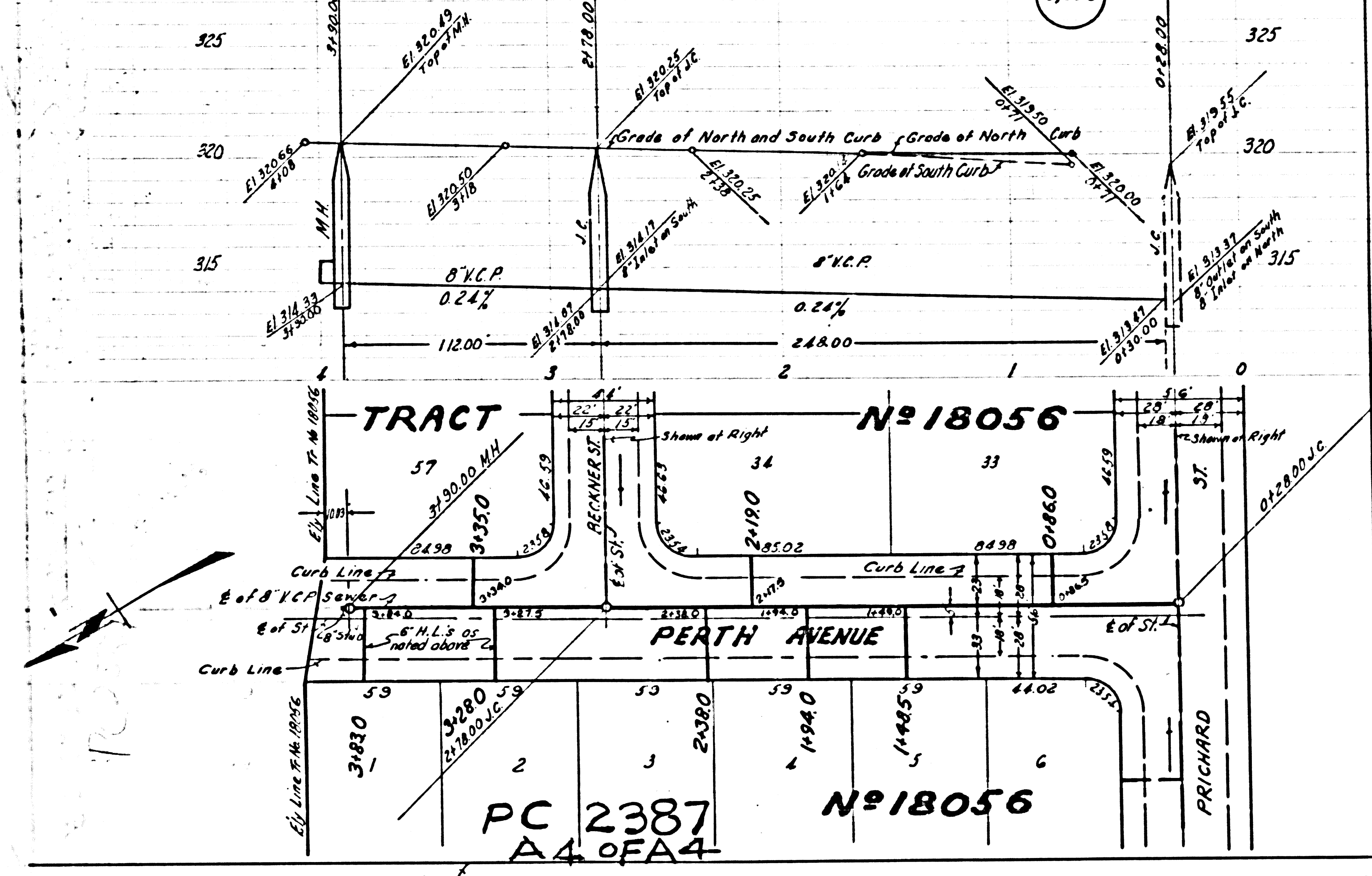
16,353

TRACT N° 18056

PC 2387
A.A. OF A4
N° 18056

TRACT

TRACT



C. 2387 - J. N. F. 251

Page 2.

B.M. P.S. - 60 L.A. Co. Sub. E.B. 1244,
3 M. "X" on Brass Cap. County Man. in
"Hand Hole" at Temple & Hudson Aves.
Elev. 323.779

16,351

PUENTE

Trim Line

PROFILE, ALIGNMENT AND GRADE OF
SANITARY SEWERS
TO BE CONSTRUCTED IN
TRACT NO. 18056

PC-2387
J. N. F. 251
Page 1
of 4 pgs.

16,350

- (1) USE STANDARD MANHOLE FRAME AND COVER, 5'-2-1/2."
- (2) USE STANDARD STRENGTH PIPE, EXCEPT AS NOTED.
- (3) USE CEMENT MORTAR FOR ALL VITRIFIED CLAY PIPE JOINTS.
- (4) RESURFACE ALL TRENCH WITHIN PAVED AREA TO MEET LOS ANGELES COUNTY ROAD DEPT. PERMIT.
- (5) CONSTRUCT HOUSE LATERALS WITH INVERT AT PROPERTY LINE (6) FEET BELOW CURB GRADE, EXCEPT AS NOTED.
- (6) ALL STRUCTURES SHALL BE BRICK SEWER STRUCTURES, 5'-2-1/2" DIA.
- (7) ENGAGE FOUR FEET OF SEWER AT POINTS OF INTERFERENCE WITH POLES 5'-2-1/2" DIA.
- (8) FOR ALLOWABLE LEAKAGE TEST, USE FORMULA NO. 1, SPEC'S. SEC. 5.

PRIVATE CONTRACT NO. 2387
W.S. 38
Sheet 1 of 1 Sheet
JUNE 1952

NOTE: NO REPRESENTATIVE OF THE COUNTY ENGINEER WILL SURVEY OR LAY OUT ANY PORTION OF THE WORK. THE OWNER OR HIS AUTHORIZED REPRESENTATIVE SHALL FURNISH TO THE COUNTY ENGINEER WITH GRADE SHEETS AND STATIONS OF ALL HOUSE CONNECTIONS AND Y BRANCHES AND SHALL PROVIDE STAKES FOR THEM AT THESE POINTS LOCATED WITH STATIONING PLAINLY MARKED. ANY CHANGE OF LOCATION SHALL BE REQUESTED IN WRITING BY THE OWNER OR HIS REPRESENTATIVE. NO REVISIONS SHALL BE MADE IN THESE PLANS WITHOUT APPROVAL OF THE COUNTY ENGINEER.

NOTE: PROVIDE STAKES ON THE PROPERTY LINES OR PROPERTY LINES PRODUCED AT RIGHT ANGLES TO THE SEWER LINE AT THE CENTER LINE OF EACH MANHOLE.

PLANS PREPARED UNDER THE
SUPERVISION OF:
Dani'l Withers
Registered Engineer No. 6198

FOR LEGEND
SEE PLAN NO. 3-2-64

NOTE: GRADES TO WHICH THIS IMPROVEMENT IS TO BE CONSTRUCTED ARE SHOWN ON PLANS AND PROFILE. GRADE POINTS AND TOP OF CURB, CENTER LINE OF STREET OR CENTER LINE OF ALLEY ARE SHOWN BY CIRCLES ON PROFILES. AT ALL POINTS BETWEEN DESIGNATED POINTS THE GRADE SHALL BE ESTABLISHED SO AS TO CONFORM TO A STRAIGHT LINE DRAWN BETWEEN SAID DESIGNATED POINTS. ELEVATIONS ARE IN FEET ABOVE U. S. & S. DATUM OR MEAN SEA LEVEL. THIS DRAWING AND THE DATA HEREON ARE HEREBY MADE A PART OF THE SPECIFICATIONS. WORK SHALL BE CONSTRUCTED ACCORDING TO SPECIFICATIONS ON FILE IN THE OFFICE OF THE COUNTY ENGINEER AND SHALL BE PROCEEDED ONLY IN THE PRESENCE OF THE COUNTY ENGINEER. BEFORE WORK CAN BE STARTED, THE CONTRACTOR MUST OBTAIN A PERMIT TO EXCAVATE IN COUNTY STREETS FROM THE L. A. COUNTY ROAD DEPT., JOB NO. OF STREET AND MAKE A DEPOSIT WITH THE COUNTY ENGINEER, 733 L. A. COUNTY ENGINEERING BLDG., SUFFICIENT TO COVER THE COST OF CONSTRUCTION INSPECTION AND RECORD PLANS. APPROVAL OF THIS PLAN BY THE COUNTY OF LOS ANGELES DOES NOT CONSTITUTE A REPRESENTATION AS TO THE ACCURACY OF THE LOCATION OF OR THE EXISTENCE OR NON-EXISTENCE OF ANY UNDERGROUND UTILITY, PIPE OR STRUCTURE WITHIN THE LIMITS OF THIS PROJECT.

COUNTY OF LOS ANGELES, CALIFORNIA.
WILLIAM J. FOX COUNTY ENGINEER
APPROVED BY *J. W. POE* ASST. CHIEF DEPUTY
A. M. RAWN
APPROVED BY *W. S. KIRBY* CHIEF ENGINEER OF COUNTY SANITATION DISTRICT NO. 15
OFFICE ENGR.
REG. CE NO. 7820

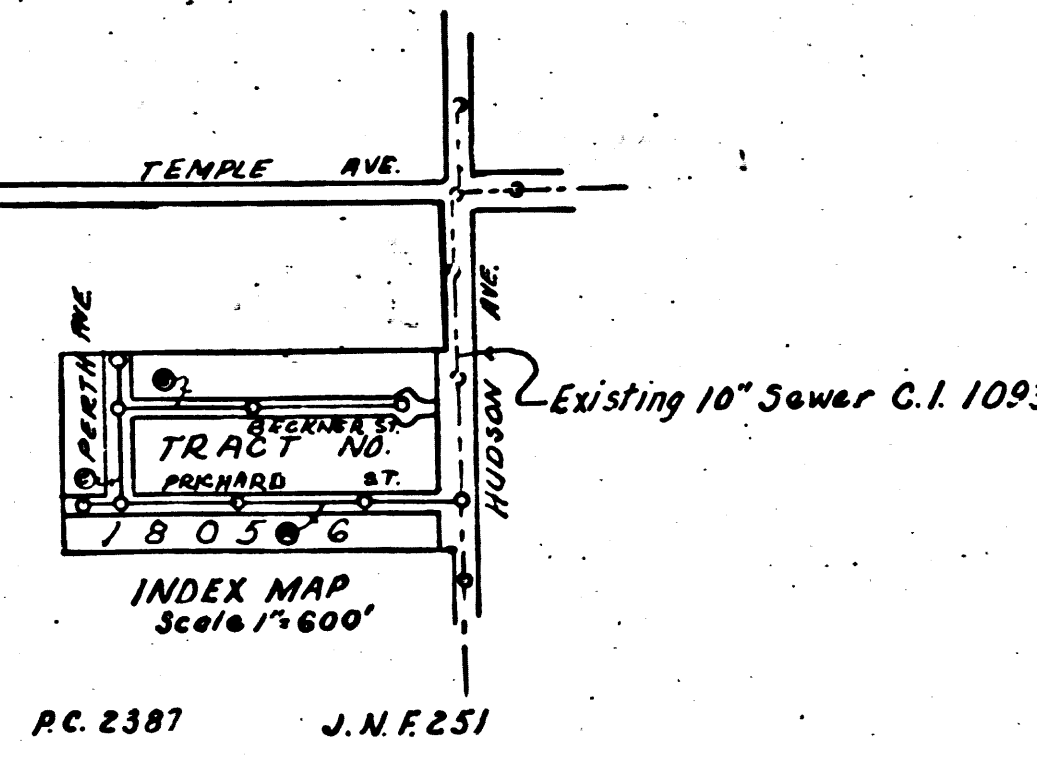
CHECKED BY *W. S. Kirby* 3-5-1953
OFFICE OF COUNTY ENGINEER, REG. CE NO. 7820

checked 5-20-53 *W. S. Kirby*

Trim Line

REC
L.A. CO. 15
PC 2387 - J. N. F. 251

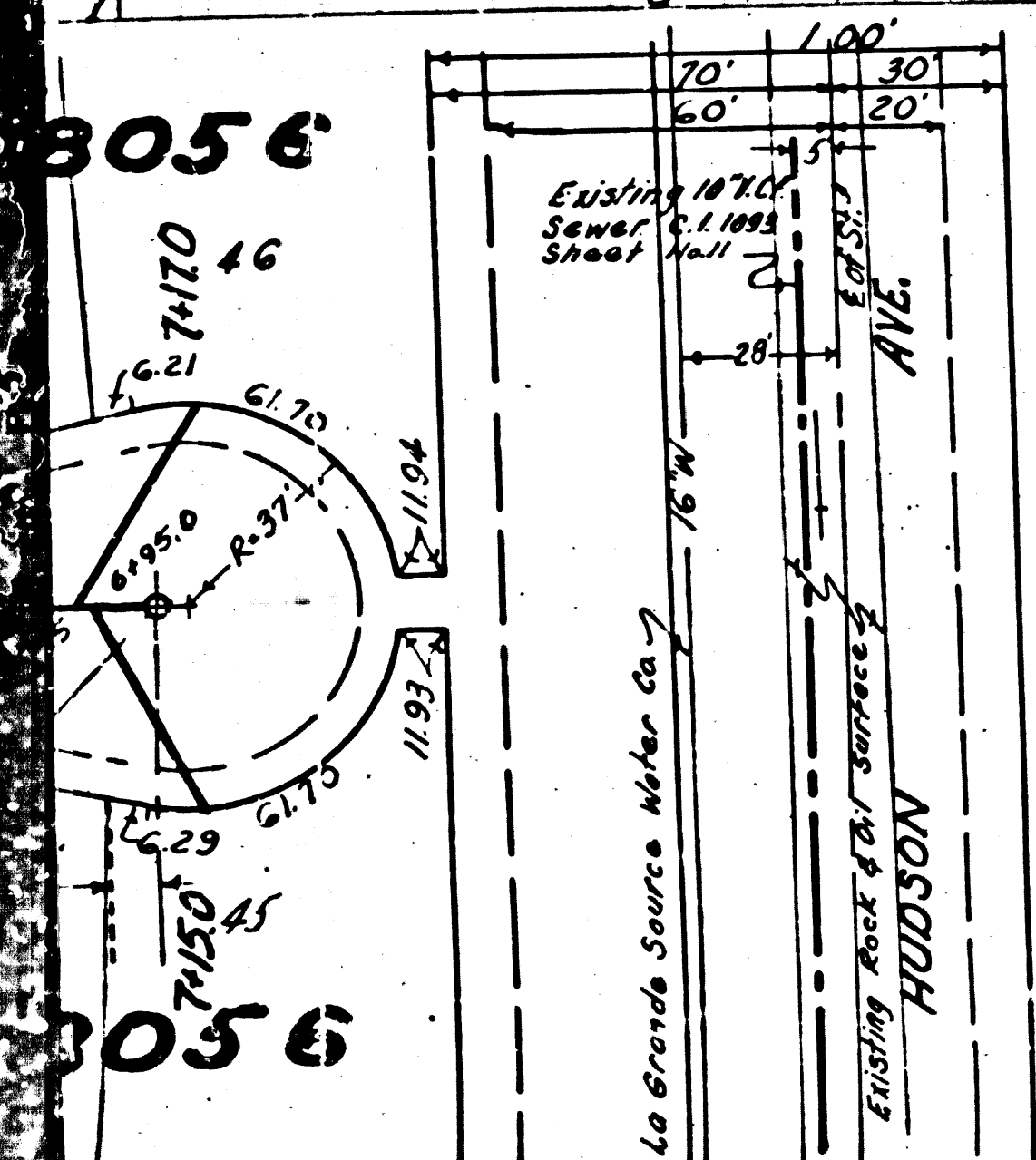
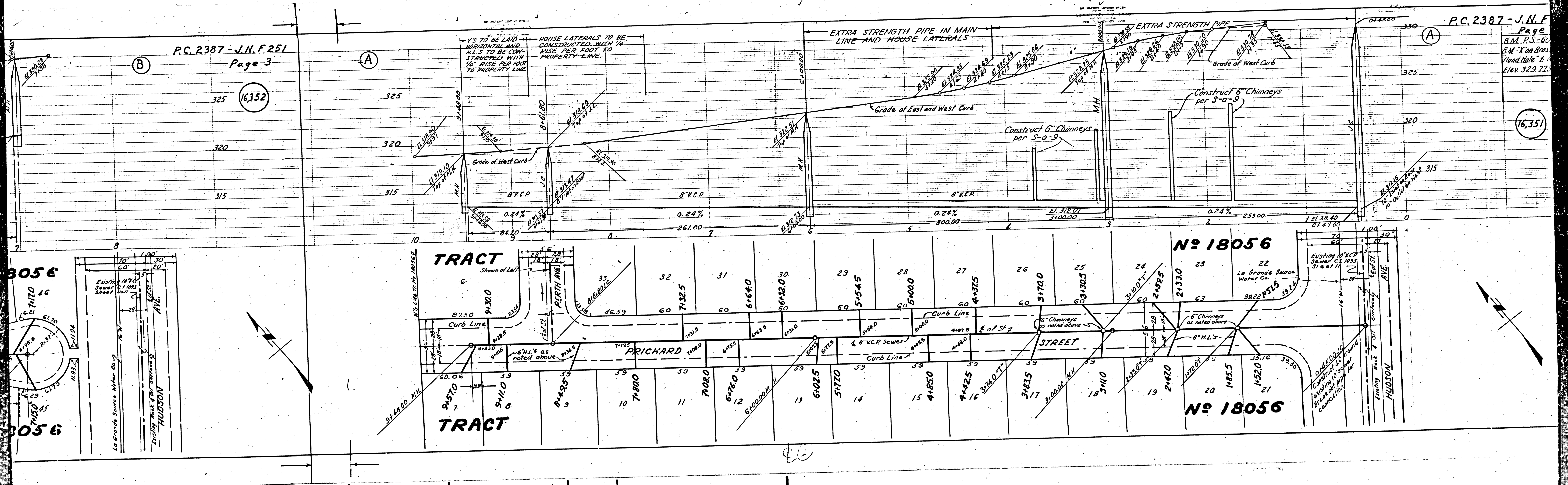
R.S.



INDEX MAP
Scale 1"=600'
PC 2387 J. N. F. 251

P.C. 2387 - J.N.F. 251
Page 3

P.C. 2387 - J.N.F.
Page
B.M. P.S. - 60
B.M. 'X' on Brass
Vand table 'E.'
Elev. 329.77.



Trim Line

Y's to be laid Horizontal and House Laterals to be constructed with 1/4" rise per foot to property line.

P.C. 2387
J.N.F.251
Page 4 (C)

(16,353)

