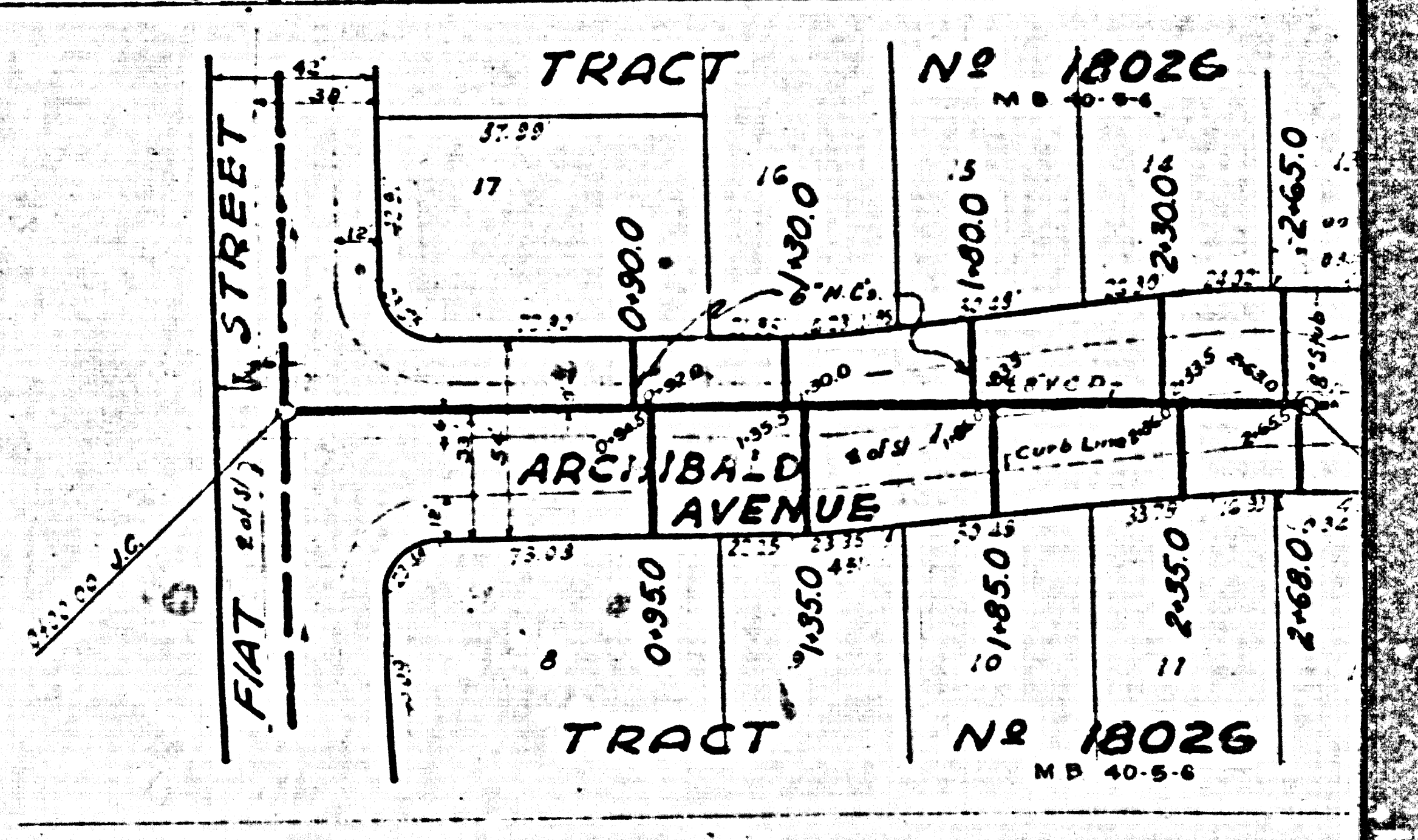
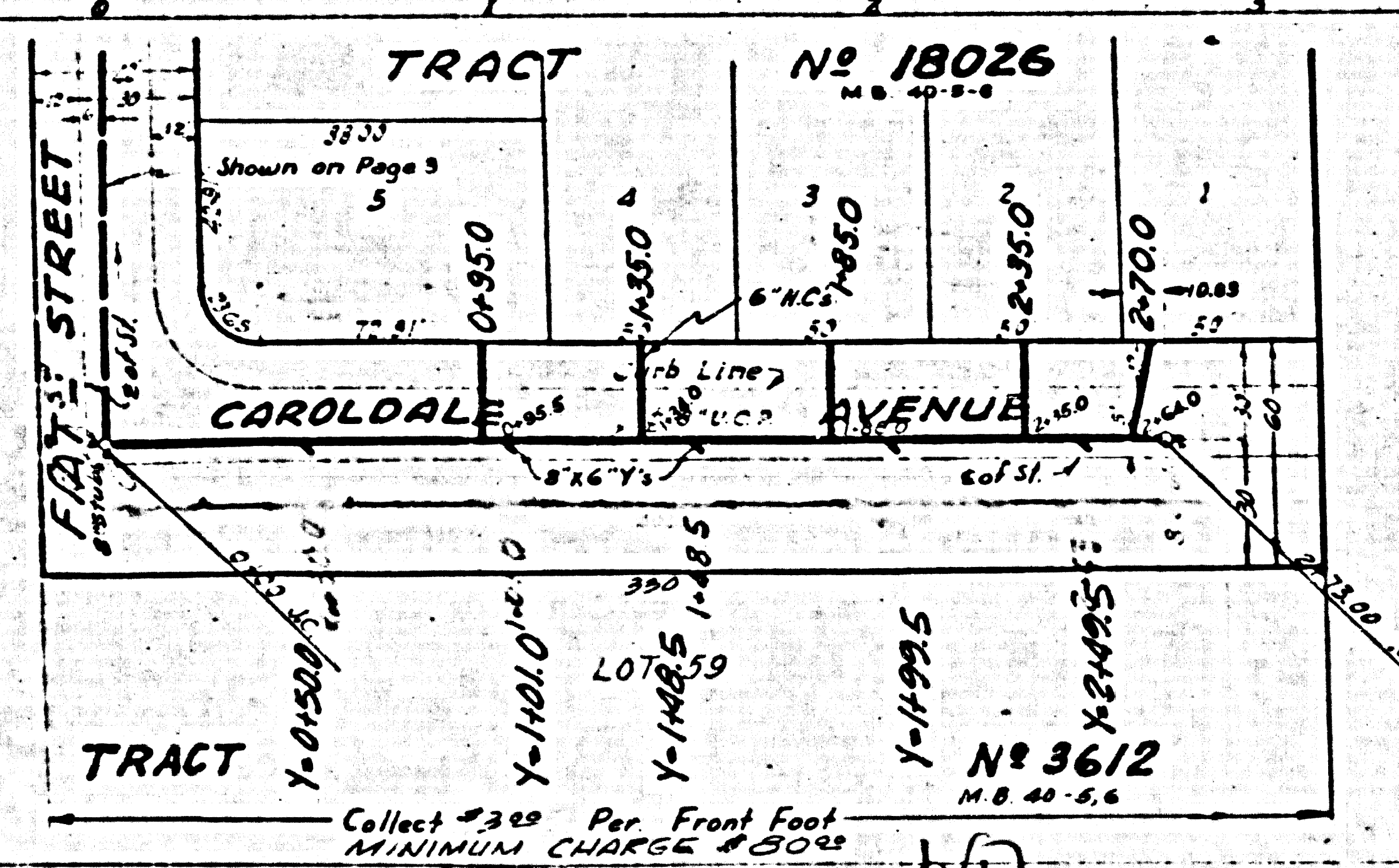
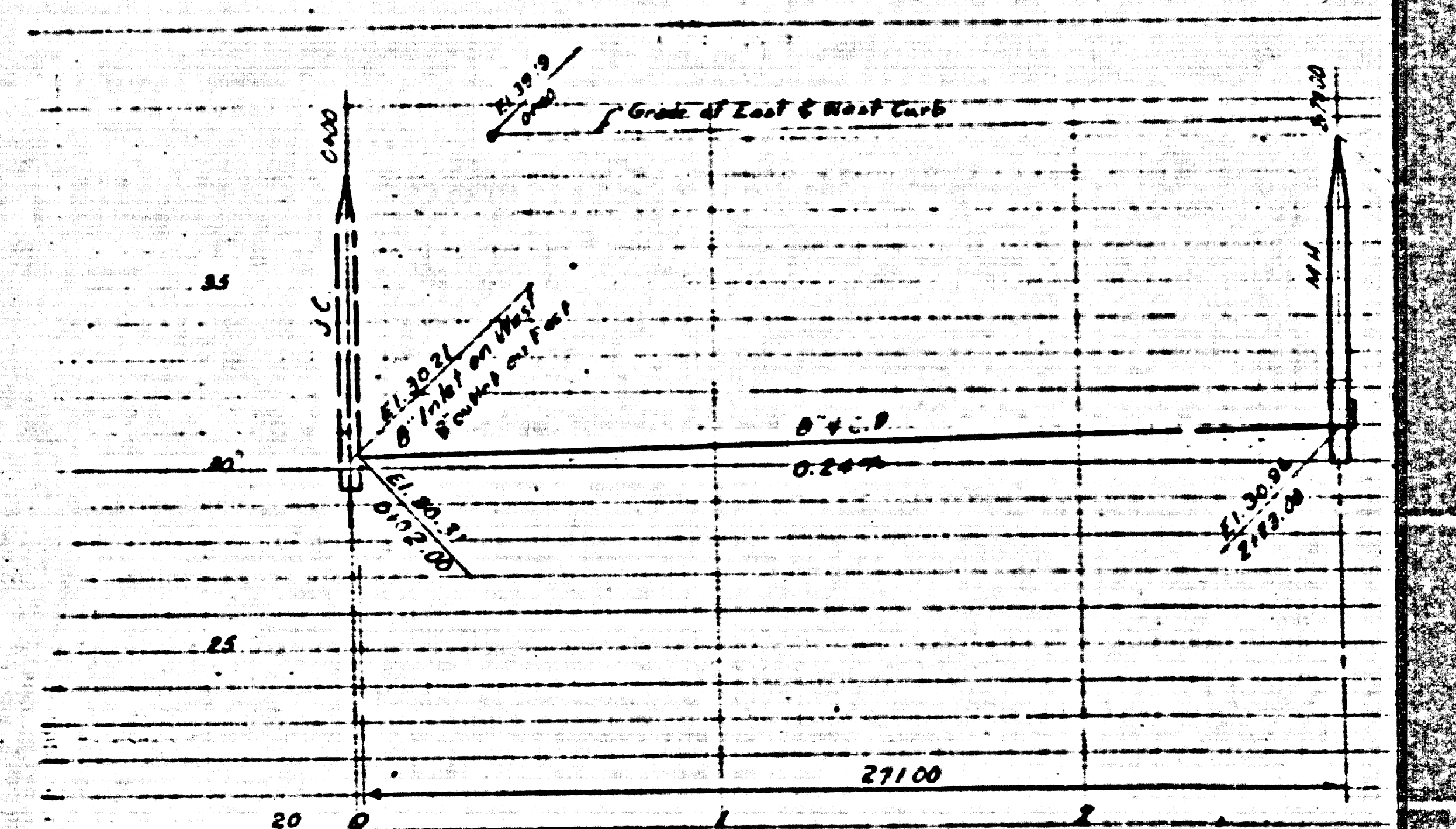
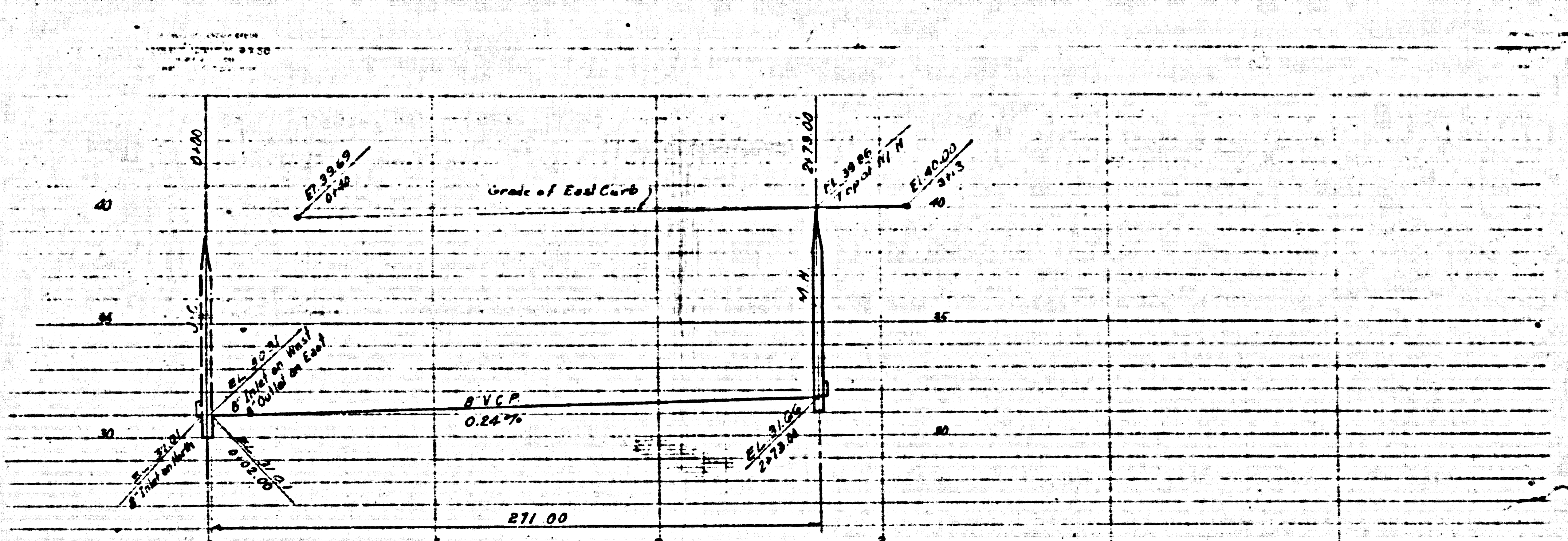


P.C. 2394

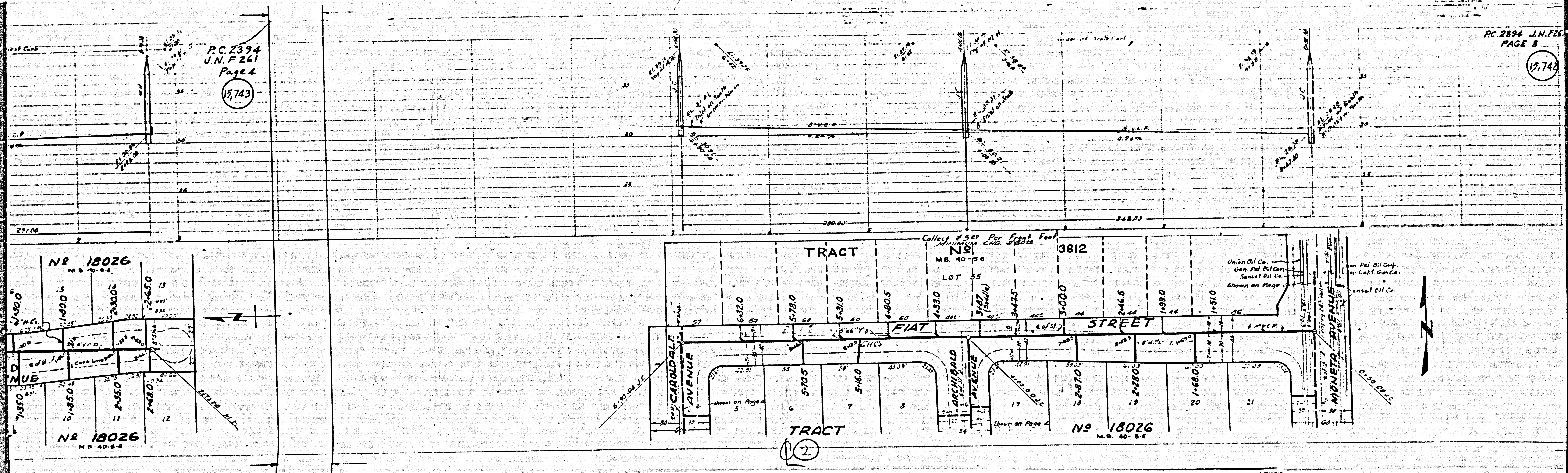


Collect \$300 Per Front Foot
MINIMUM CHARGE \$5000

21

PC 2394
J.N.F 261
Page 4
15,743

PC 2394 J.N.F.261
PAGE 3
15,742



12

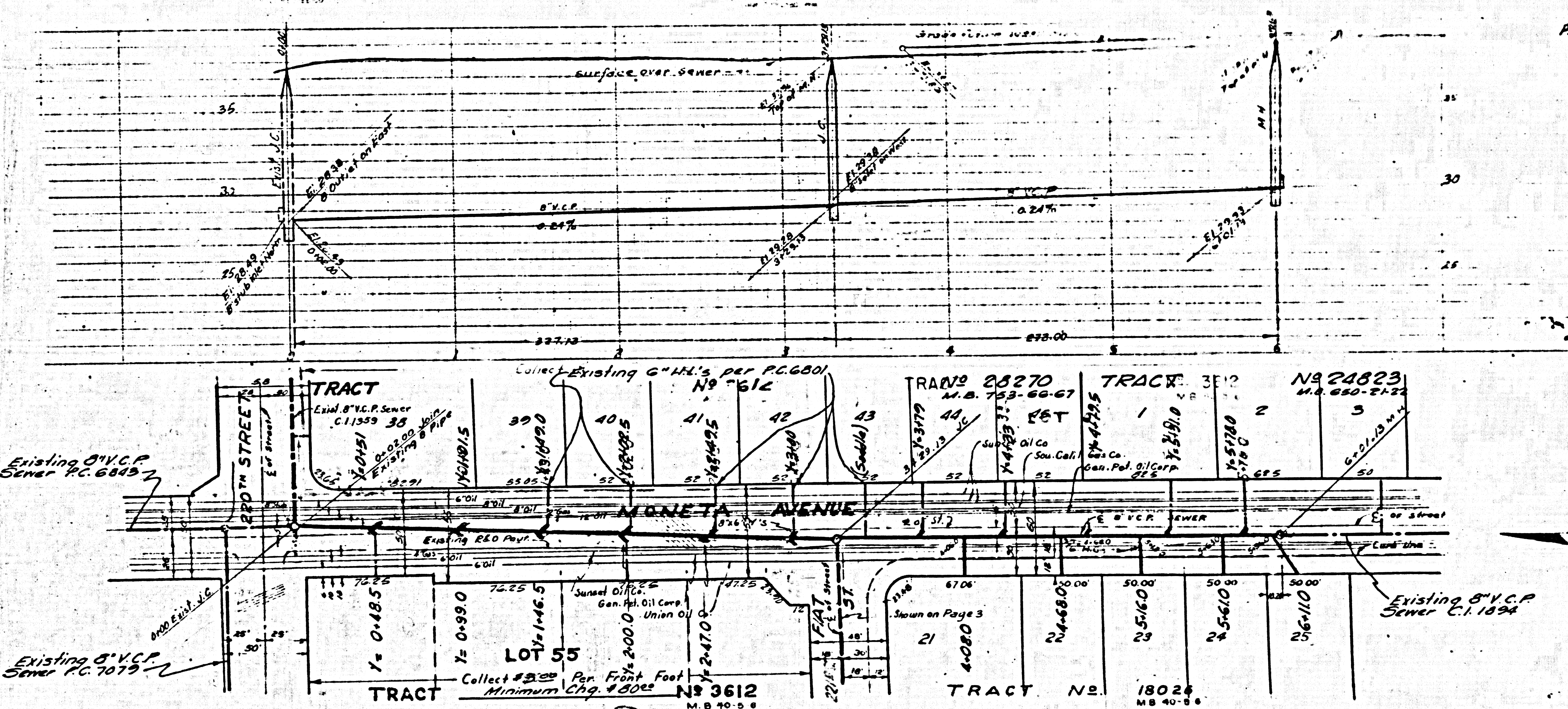
No 18026
M.B. 40-5-C

No 18026
M.B. 40-5-C

No 18026
M.B. 40-5-C

15,742

15,741



3

15,740

REVISIONS
NO. DATE
BY

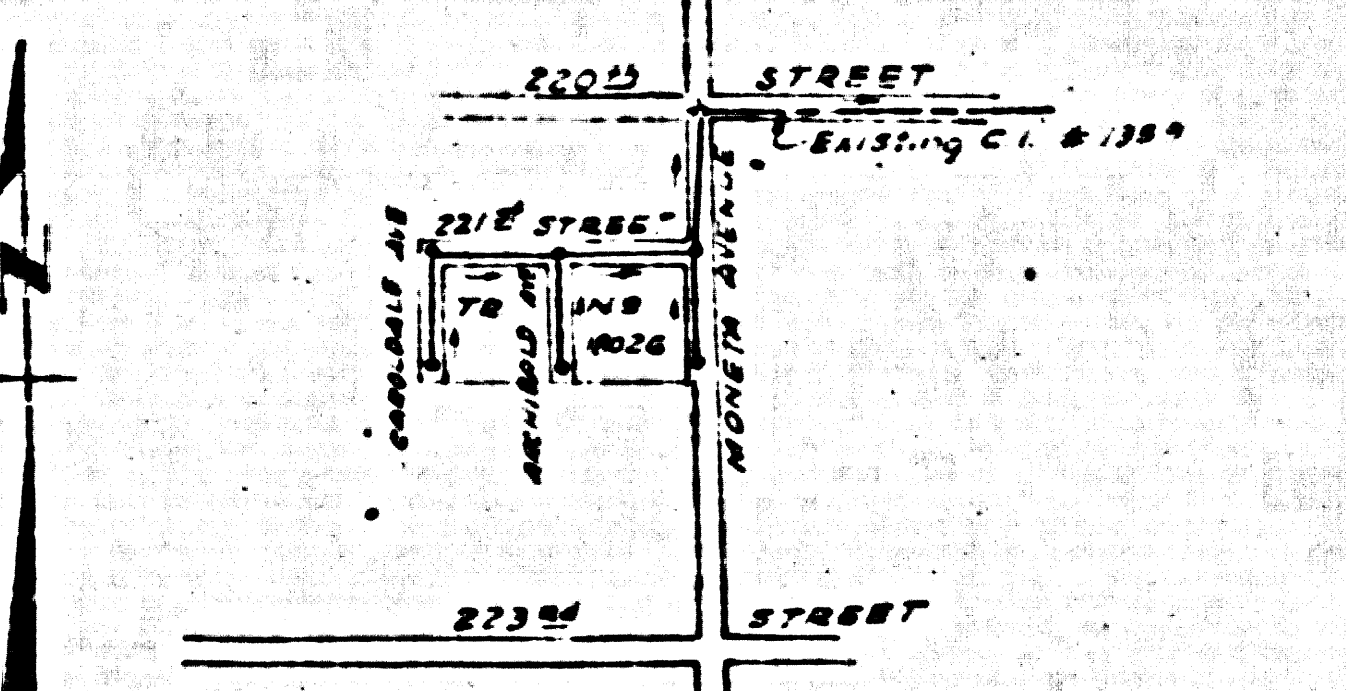
Lomita

Trim Line

<p>(1) USE STANDARD MANHOLE FRAMES AND COVERS AS PER STANDARD SPECIFICATIONS (2) USE STANDARD STRENGTH PIPE (3) USE CEMENT MORTAR FOR ALL VITRIFIED CLAY PIPE JOINTS (4) SURFACE ALL TRENCH WITHIN FINISH AREA TO MEET LOS ANGELES COUNTY ROAD DEPARTMENT REQUIREMENTS (5) CONSTRUCT MANHOLE CONNECTIONS WITH INVERT AT PROPERTY LINE 3 FEET BELOW GRADE OF CURB (6) ALL STRUCTURES SHALL BE BARGE KEEPER STRUCTURES 3' x 3' x 3' (7) MANHOLE FRAMING SHALL BE SET AT POINTS OF INTERSECTION WITH PAVES WITHIN 3'-0"</p>	<p>PROFILE, ALIGNMENT AND GRADE OF SANITARY SEWERS TO BE CONSTRUCTED BY 221ST STREET BETWEEN CAROLDALE AVENUE AND MONETA AVENUE CAROLDALE AVENUE SOUTH OF 221ST STREET ARCHBOLD AVENUE SOUTH OF 221ST STREET MONETA AVENUE BETWEEN 220TH STREET AND SOUTH OF 221ST STREET PRIVATE CONTRACT NO 2394 W-8-28 ONE SHEET</p>
<p>NOTE: NO REPRESENTATIVE OF THE COUNTY ENGINEER WILL SURVEY OR LAY OUT ANY PORTION OF THE WORK. THE OWNER OR HIS AUTHORIZED REPRESENTATIVE SHALL FURNISH THE COUNTY ENGINEER WITH GRADE SHEETS & STATIONS OF ALL EXISTING CONDUITS & UTILITIES WITHIN THE LIMITS OF THE WORK AT THEIR PROPER LOCATIONS WITH SUFFICIENT PLACES, MARKS AND QUANTITIES OF SHALL BE DEMONSTRATED BY THE OWNER AS HIS REPRESENTATIVE. NO REVISIONS SHALL BE MADE IN THESE PLANS WITHOUT APPROVAL OF THE COUNTY ENGINEER. STOPPERS TO BE INSTALLED WITH JOINT COMPANING BY MANUFACTURER AT THE PLANT. SPECS. SEC. 33-48 CONCRETE FINISHMENT TO BE SET NOT LESS THAN 1" IN THICKNESS WITH REINFORCING BARS SPEC. SEC. 40 ELECTRICAL WIRE AND TAGS - SPECS. SEC. 40</p>	<p>PREPARED IN THE OFFICES OF RALPH A. HUNTERLEY BY RALPH A. HUNTERLEY</p>

FOR LEGEND
See Plan No. 2-2-66

NOTE:
ELEVATIONS ARE IN FEET ABOVE U.S.G.S. DATUM OR MEAN SEA LEVEL.
THIS DRAWING AND THE DATA HEREON ARE HEREBY MADE A PART OF THE SPECIFICATIONS.
WORK SHALL BE CONSTRUCTED ACCORDING TO SPECIFICATIONS ON FILE IN THE OFFICE OF THE COUNTY
ENGINEER AND SHALL BE PROSECUTED ONLY IN THE PRESENCE OF THE COUNTY ENGINEER.
BEFORE WORK CAN BE STARTED THE CONTRACTOR MUST OBTAIN A PERMIT TO EXCAVATE IN COUNTY
STREETS FROM LOS ANGELES COUNTY ROAD DEPARTMENT, FOR WEST 8-28, AND MAKE A DEPOSIT
WITH THE COUNTY ENGINEER, THE COUNTY ENGINEERING BUILDING SUFFICIENT TO COVER COST OF
CONSTRUCTION INSPECTION AND RECORD PLANS.
IF WORK IS TO BE DONE IN A STATE HIGHWAY A PERMIT MUST BE OBTAINED FROM THE
STATE OF CALIFORNIA DIVISION OF HIGHWAYS, 100 SOUTH BROADWAY, ST. ANTONIO, TEXAS, IN ACCORDANCE WITH
THE COUNTY ENGINEER.
APPROVAL OF THIS PLAN BY THE COUNTY OF LOS ANGELES DOES NOT CONSTITUTE A
REPRESENTATION AS TO THE ACCURACY OF, OR THE EXISTENCE OR NON-EXISTENCE
OF ANY UNDERGROUND UTILITY PIPE OR STRUCTURE WITHIN THE LIMITS OF THIS PROJECT.



COUNTY OF LOS ANGELES, CALIFORNIA
APPROVED: **WILLIAM J. FOX** COUNTY ENGINEER
APPROVED: **RALPH A. HUNTERLEY** CHIEF ENGINEER OF COUNTY SANITARY DISTRICT NO. 2
BY **RALPH A. HUNTERLEY** CHIEF DEPUTY
BY **J. J. [Signature]** OFFICE ENGINEER
CHECKED BY **[Signature]** OFFICE OF COUNTY ENGINEER & S.P.A. DIV.

15