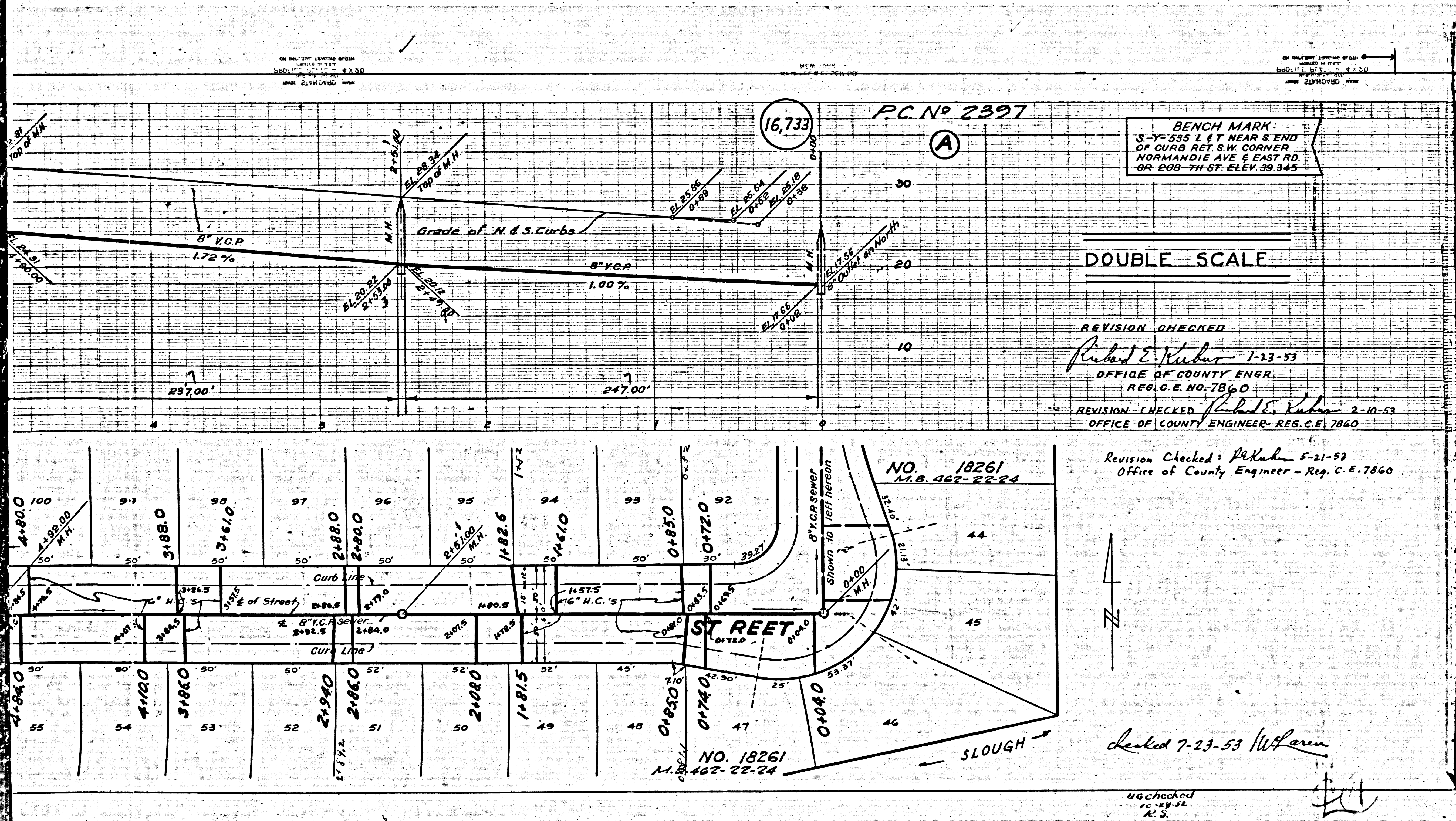


6" Chimneys per S.O.S. constructed to exist Chimney bases
 8" V.C.P. 0.24%
 Main Line Sewer and Manholes to be constructed by San. Dist. under separate contract.
 REIMBURSEMENT CHARGE - CALL MAIN OFFICE
 TRACT M.B. 40-2
 HAMMERTON
 TRACT M.B. 40-2
 TRACT M.B. 40-2
 TRACT M.B. 650-57-59
 TORRANCE BLVD.
 CATALINA
 BERENDO AVE.
 NEW HAMPSHIRE AVE.
 16,732
 16,731
 18
 17
 16
 15
 14
 13
 12
 11
 10
 9
 8
 7
 6
 5
 4
 3
 2
 1
 0
 1
 2
 3
 4
 5
 6
 7
 8
 9
 10
 11
 12
 13
 14
 15
 16
 17
 18
 19
 20
 21
 22
 23
 24
 25
 26
 27
 28
 29
 30
 31
 32
 33
 34
 35
 36
 37
 38
 39
 40
 41
 42
 43
 44
 45
 46
 47
 48
 49
 50
 51
 52
 53
 54
 55
 56
 57
 58
 59
 60
 61
 62
 63
 64
 65
 66
 67
 68
 69
 70
 71
 72
 73
 74
 75
 76
 77
 78
 79
 80
 81
 82
 83
 84
 85
 86
 87
 88
 89
 90
 91
 92
 93
 94
 95
 96
 97
 98
 99
 100

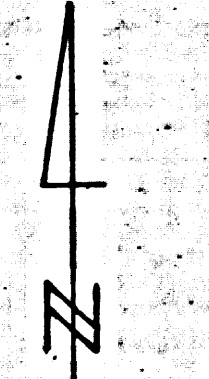


BENCH MARK:
 5'-336 1/4 FT NEAR S END
 OF CURB RET. S.W. CORNER
 NORMANDIE AVE & EAST RD.
 OR 200-TH ST. ELEV. 89.345

DOUBLE SCALE

REVISION CHECKED
Richard E. Rubin 1-23-53
 OFFICE OF COUNTY ENGR.
 REG. C.E. NO. 7860
 REVISION CHECKED *Richard E. Rubin* 2-10-53
 OFFICE OF COUNTY ENGINEER, REG. C.E. 7860

Revision Checked: *Richard E. Rubin* 5-21-53
 Office of County Engineer - Reg. C.E. 7860



Sealed 7-23-53 *W. L. ...*

Not checked
 10-19-52
 R.S.

PROFILE, ALIGNMENT AND GRADE OF
SANITARY SEWERS
 TO BE CONSTRUCTED IN
209-TH STREET
 FROM ROYAL BLVD TO GREENHEDGE STREET
RIGHT OF WAY
 IN TRACT NO. 18261
GREENHEDGE STREET
 FROM ELLIOT AVE TO 209TH STREET

SCALE: VERT. 1" = 8'
 HORIZ. 1" = 40'
 OCTOBER 1952
 PRIVATE CONTRACT NO. 2397
 W.S. 26

SHEET 2 OF 2 SHEETS
 PREPARED IN THE OFFICES OF
SEABOARD ENGINEERING CO.

Mark A. Robin
 MARK A. ROBIN, R.C.E. NO. 2059

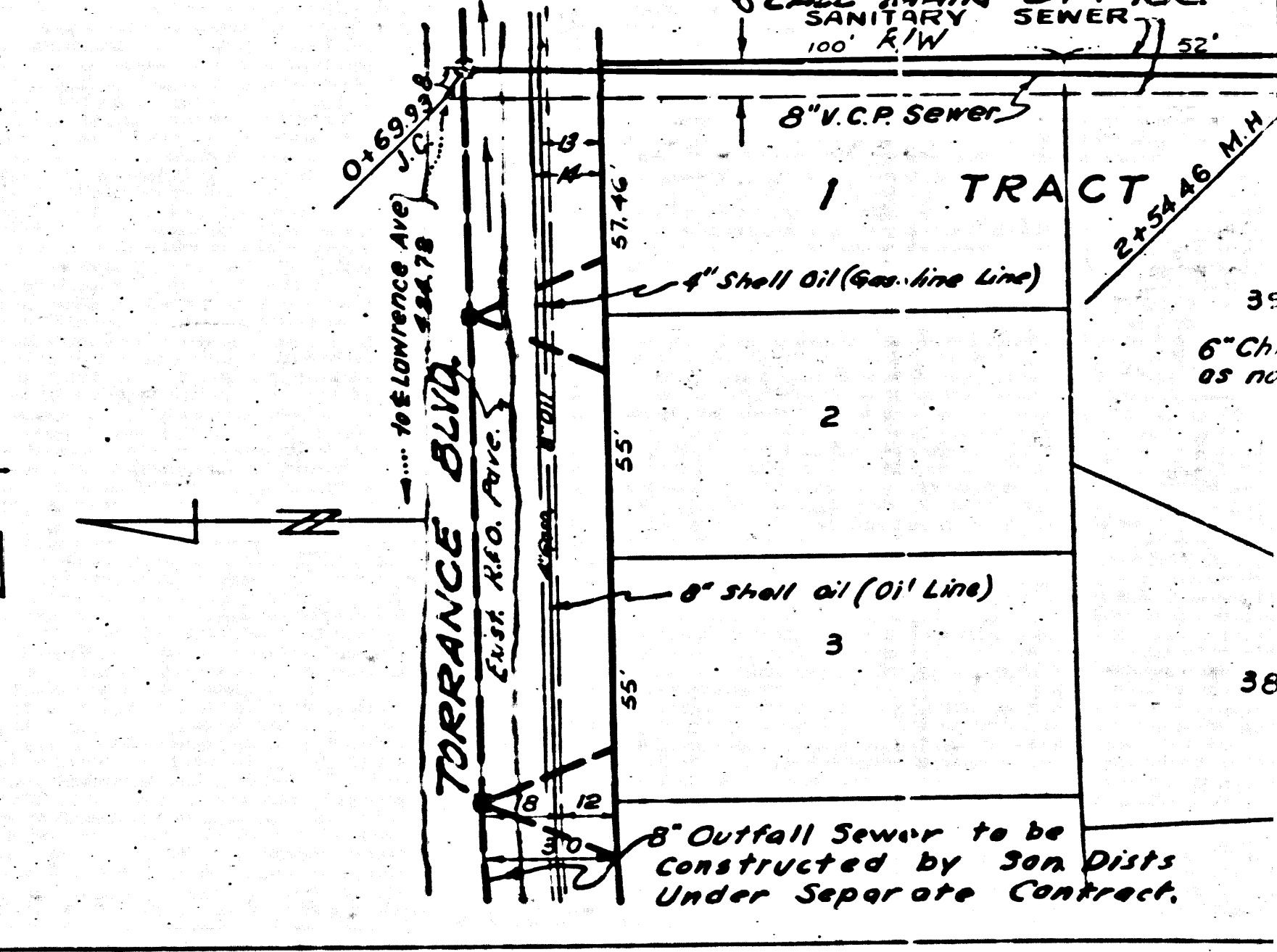
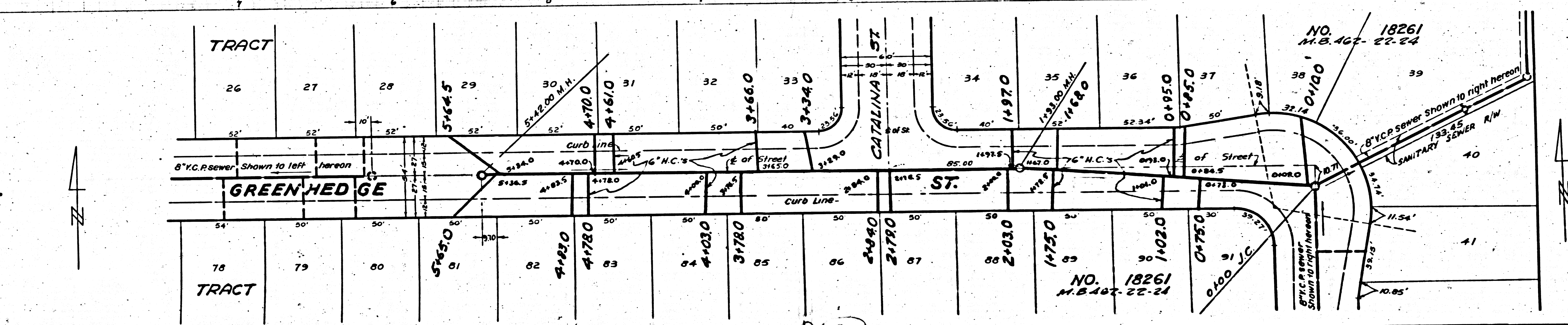
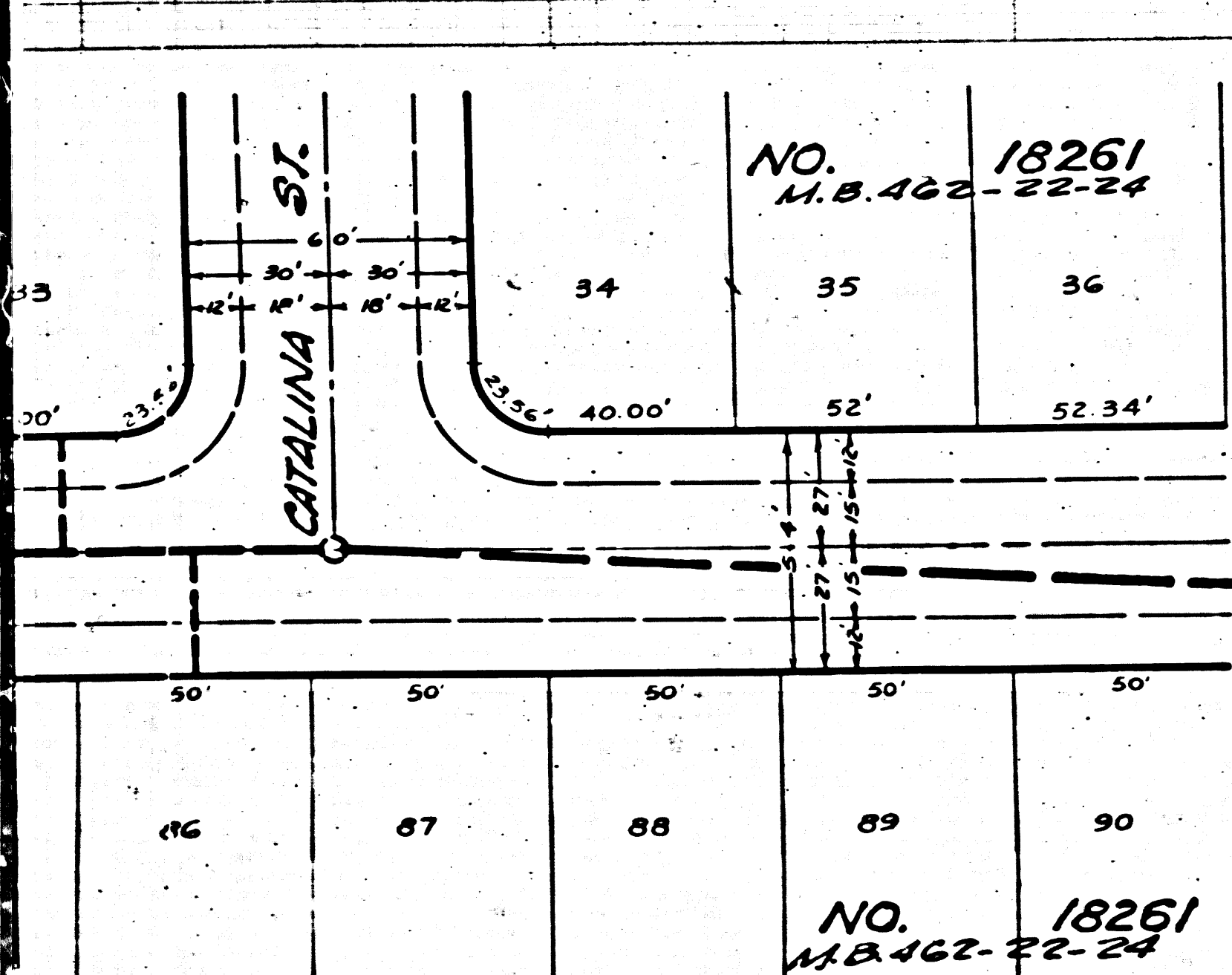
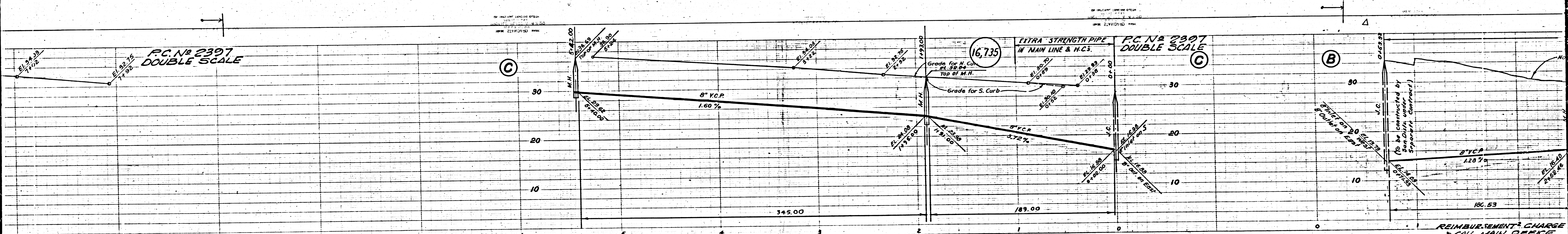
Before breaking into any existing sewerage
 and before final acceptance of this work,
 County Sanitation District should be notified
 in order that required inspection may be made.

COUNTY OF LOS ANGELES, CALIFORNIA
 APPROVED: WILLIAM J. FOX COUNTY ENGINEER APPROVED BY: *W. L. ...* AM. RAWN
 Chief Engineer of County Sanitation District No. 4 Office Engr.

BY: *W. L. ...*
 Chief Deputy

CHECKED BY: *Richard E. Rubin* 11-21-51
 OFFICE of County Engineer Reg. C.E. No. 7860

508-TH ST. RIGHT OF WAY, GREENHEDGE ST.
 SANITARY SEWER
 TRACT NO. 18261
 RECEIVED
 OCT 21 1952
 COUNTY ENGINEER
 SANITATION DIVISION



PC No 2307
DOUBLE SCALE

PC No 2307
DOUBLE SCALE

16,735

EXTRA STRENGTH PIPE
IN MAIN LINE & H.C.S.

REIMBURSEMENT CHARGE
CALL MAIN OFFICE
SANITARY SEWER
100' R/W

NO. 18261
M.B. 462-22-24

NO. 18261
M.B. 462-22-24

NO. 18261
M.B. 462-22-24

TRACT 1

TRACT

TRACT

