

WHITTIER

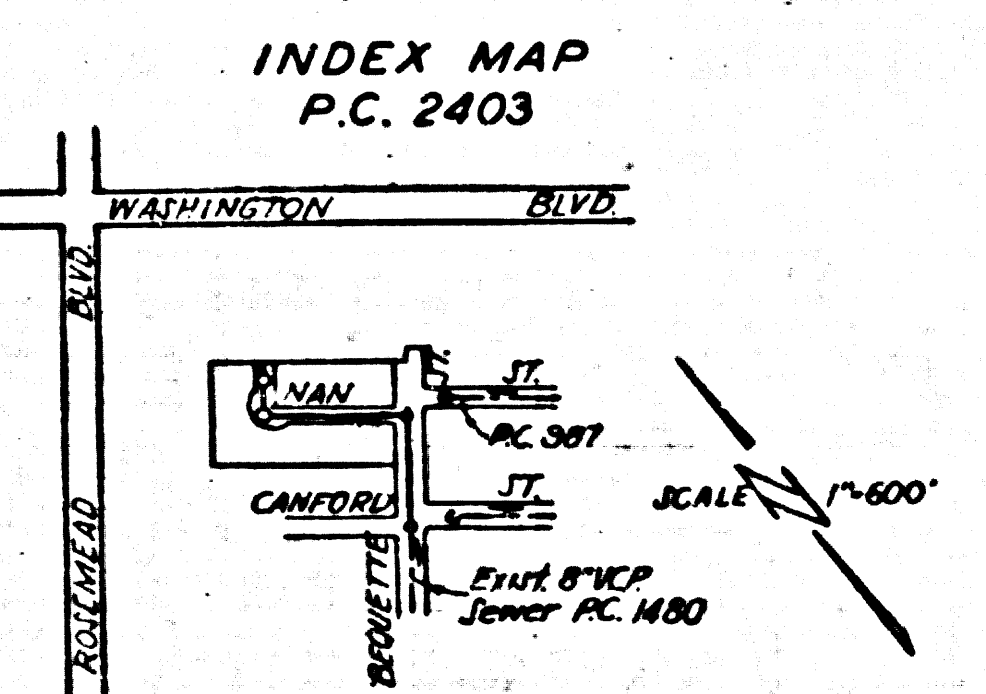
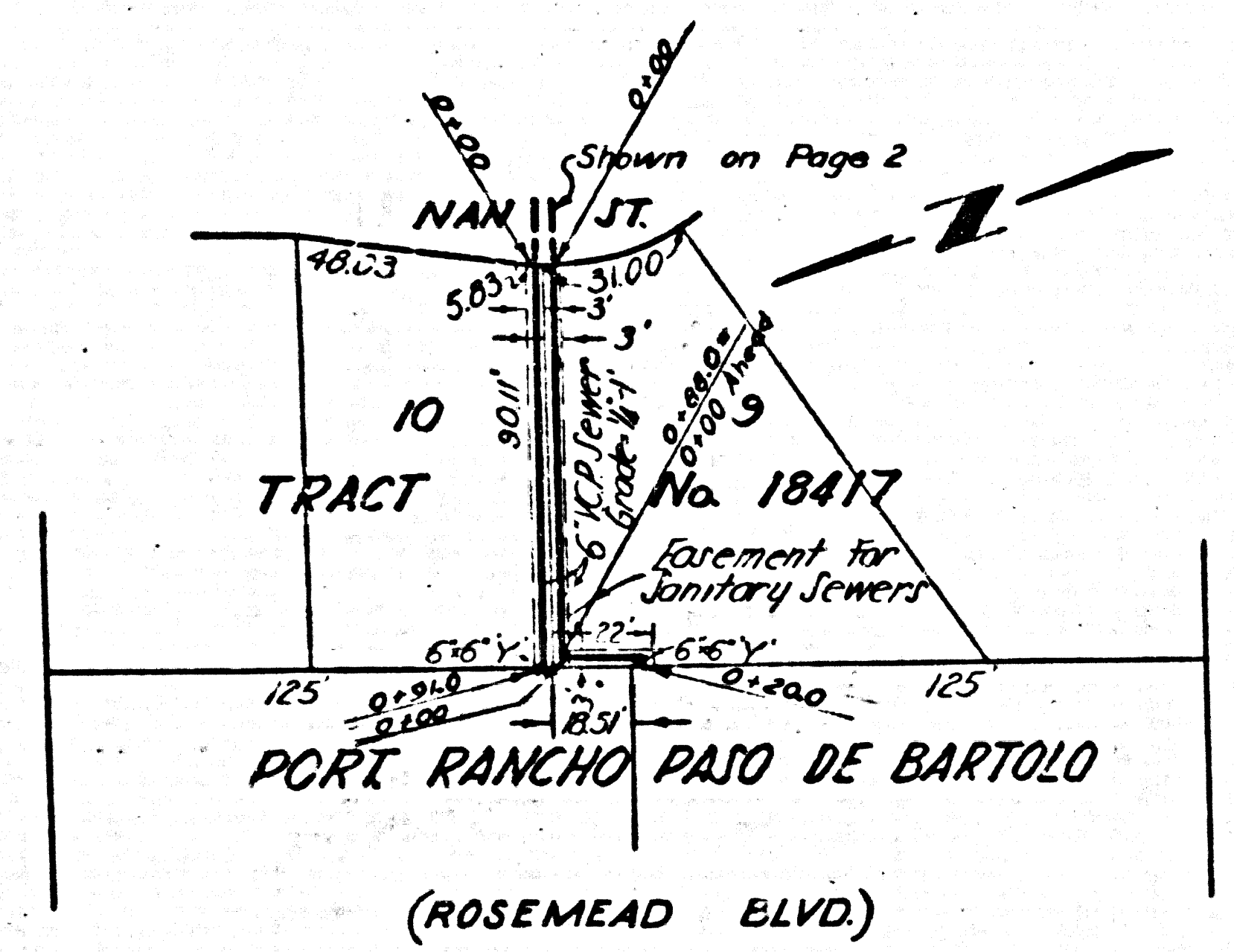
B.M. S.Y. 1675 - Elev. 161.042 Spike in East end of culvert South side Washington Blvd ± 30' South of & Washington Blvd ± 30' East of & produced Bequette Street.

- NOTE:**  
 No representative of the County Engineer will survey or layout any portion of the work.  
 The owner or his authorized representative shall furnish the county engineer with grade sheets and stations for all house connections & Y branches & shall provide stakes for them at their proper locations with stationing plainly marked. Any change in location shall be requested in writing by the owner or his representative.  
 No revisions shall be made in these plans without approval of the County Engineer.
1. Use standard manhole frames & covers, S-a-117.
  2. Use standard strength pipe.
  3. Use cement mortar for all vitrified clay pipe joints.
  4. Resurface all trench within paved area to meet L.A. County Road Dept. requirements.
  5. Encase 4' of sewer at points of interference with poles, S-a-119.
  6. House connections to be constructed with inverts at R 5' below curb grade.
  7. All structures shall be brick sewer structures, S-a-104.
  8. Provide stakes at the R or R produced at right angles to the sewer line at the E of each manhole.
  9. Stoppers to be installed with joint compound by manufacturer at his plant, specs. sect. 33 48.
  10. Concrete pavement to be cut not less than 2" in depth with concrete saw, specs. sect. 65.
  11. Install wire & tags, specs. sect. 48.

PROFILE ALIGNMENT AND GRADE OF  
**SANITARY SEWERS**  
 TO BE CONSTRUCTED IN  
**TRACT NO. 18417**  
**BEQUETTE STREET**  
 BETWEEN CANFORD ST. & NAN ST.  
**NAN STREET**  
 BETWEEN NAN ST. & NORTH TR. LINE  
**PRIVATE CONTRACT NO. 2403**  
 WS.36  
 SHEET 1 OF 1 SHEET  
 SCALE VERT. 1"=4'      SEPTEMBER 1952  
 SCALE HORIZ. 1"=40'

A. J. BATEMAN *[Signature]*  
 REG. C.E. NO 1606  
 FOR LEGEND SEE PLAN NO. S-a-64

**NOTE:**  
 Grades to which this improvement is to be constructed are shown on plans & profiles. Grade points for top of curbs, E of streets, or E of alley are shown by circles on profiles. At all points between designated points the grade shall be established so as to conform to a straight line drawn between said designated points.  
 Elevations are in feet above U.S.G.S. datum or mean sea level.  
 This drawing & the data hereon are hereby made a part of the spec. Work shall be constructed according to specifications on file in the office of the County Engineer & shall be prosecuted only in the presence of the County Engineer. Before work can be started, the contractor must obtain a permit to excavate in county streets from the L.A. County Road Dept., 108 W. 2nd St. & make a deposit with the County Engineer, 733 L.A. County Engineering Bldg., sufficient to cover the costs of construction inspection & record plans.  
 Approval of this plan by the County of Los Angeles does not constitute a representation as to the accuracy of the location of or the existence or non-existence of any underground utility, pipe or structure within the limits of this project.



COUNTY OF LOS ANGELES, CALIFORNIA  
 APPROVED, WILLIAM J. FOX COUNTY ENGINEER  
 APPROVED, A.M. RAWN-CHIEF ENGR. CO. SAN. DIST. NO. 2  
 BY *[Signature]* CHIEF DEPUTY  
 BY *[Signature]* OFFICE ENGINEER  
 CHECKED BY *[Signature]* OFFICE OF CO. ENGR. REG. C.E. 7860

RECEIVED  
 JAN 13 1953  
 L. S. POLYMER ENGINEERING  
 SANITATION DIVISION

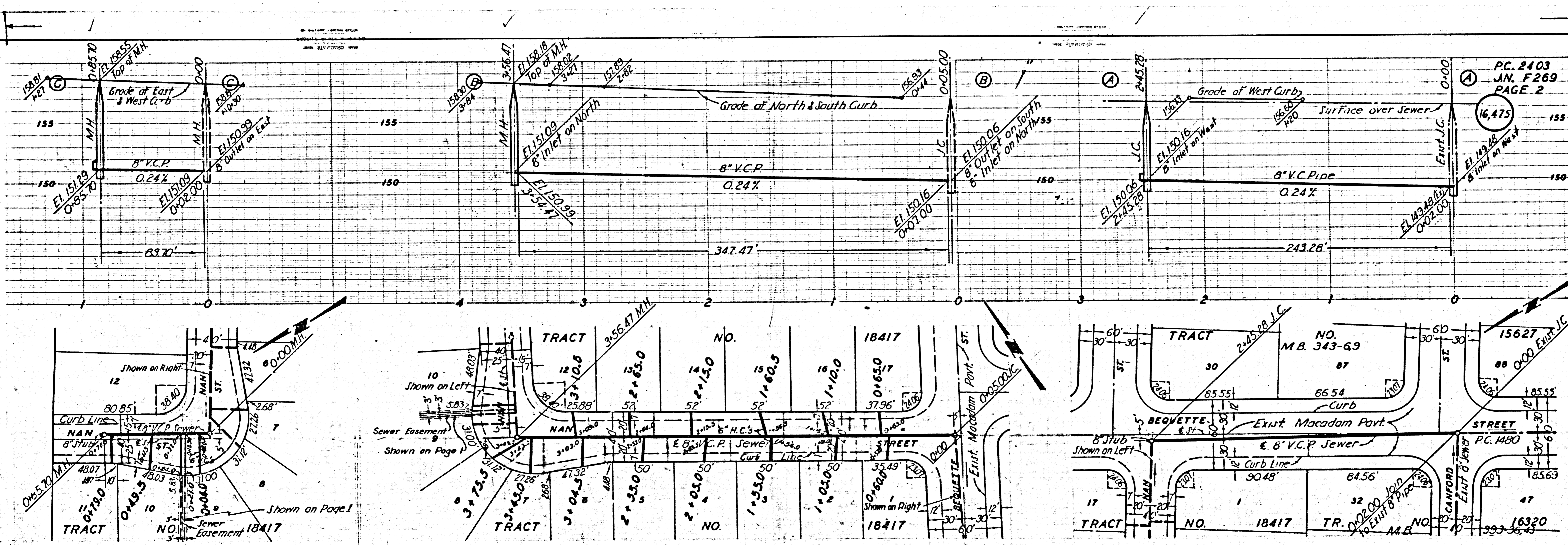
BEQUELLE 21--VAN 21--  
 TRACT No. 18417 -- PC 2403 -- NW ESEA

03  
 269  
 2  
 155  
 150  
 85.54  
 87.60  
 83.69  
 20

Checked 6-12-53 *[Signature]*

BEQUELLE ST. - NW 1/4 -  
TRACT NO. 18417 - S.C. 5403 - NW 1/4 - 1552

R. 2403



PC. 2403  
JAN. F269  
PAGE 2

16,475

100