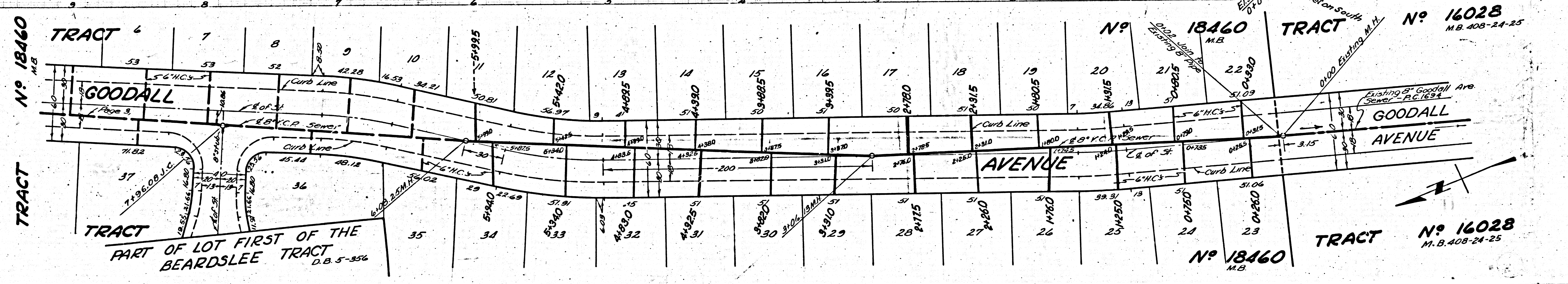


PAGE 2

15,655



12

TEMPLE CITY

Trm Line

PROFILE, ALIGNMENT, AND GRADE OF
15,654 SANITARY SEWERS PAGE 1.
 TO BE CONSTRUCTED IN P.C. 2407-J.N.F. 273

TRACT NO. 18460
 GOODALL AVENUE

FROM 3' SOUTH OF THE SOUTH TRACT LINE OF TRACT
 N° 18460 TO 72' SOUTH OF THE E OF EUCLID AVE.

PRIVATE CONTRACT NO. 2407
 IN S. 46
 SHEET 1 OF 1 SHEET

SCALE: VERT. 1" = 4'
 HORIZ. 1" = 40' SEPTEMBER 15, 1952

PREPARED IN THE OFFICES OF
 W. FINLEY
 BY *Leon H. Tracy*

FOR LEGEND SEE PLAN NO. S-6-84

RECEIVED
 DEC 5 1952
 COUNTY ENGINEER'S
 OFFICE

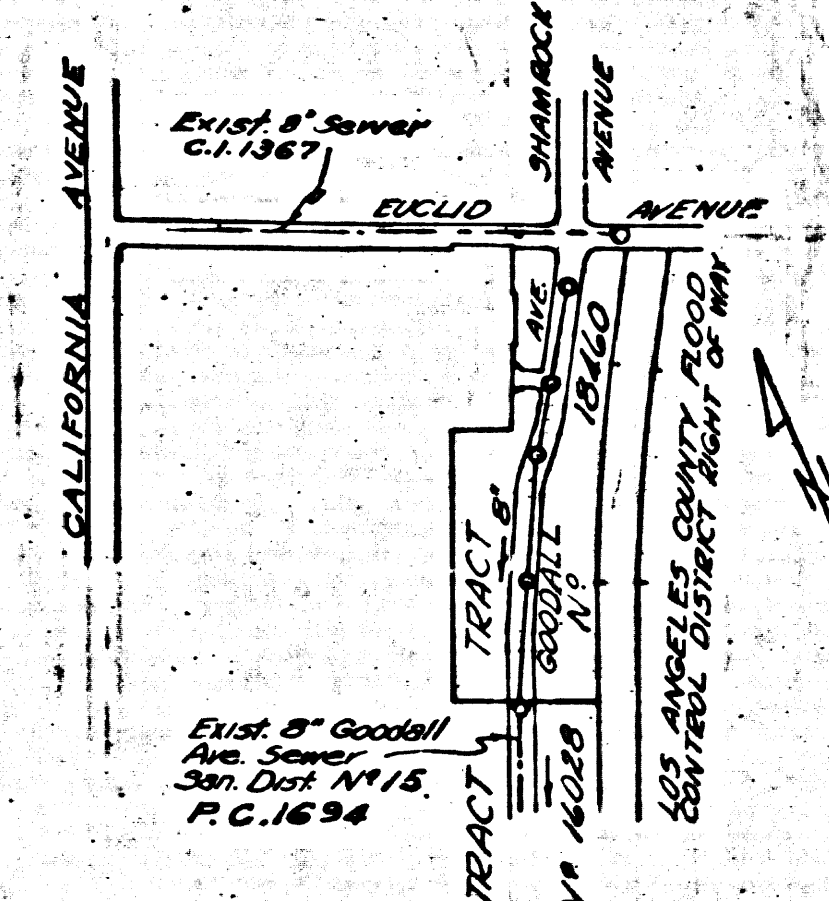
NOTE:
 LOCUS TO WHICH THIS IMPROVEMENT IS TO BE CONSTRUCTED ARE SHOWN ON PLANS
 AND PROFILES GRADE POINTS FOR TOP OF CURB CENTER LINE OF STREETS, OR CENTER
 LINE OF ALLEY ARE SHOWN BY CIRCLES ON PROFILES AT ALL POINTS BETWEEN
 ADJACENT POINTS THIS LOCUS SHALL BE ESTABLISHED AS TO CONFORM TO A
 STRAIGHT LINE DRAWN BETWEEN SAID DESIGNATED POINTS
 ELEVATIONS ARE IN FEET ABOVE U.S.C. DATUM OR MEAN SEA LEVEL
 THIS DRAWING AND THE DATA HEREON ARE HEREBY MADE A PART OF
 THE SPECIFICATIONS
 WHEN SHALL BE CONSTRUCTED ACCORDING TO SPECIFICATIONS ON FILE IN THE OFFICE
 OF THE COUNTY ENGINEER AND SHALL BE PROSECUTED WHEN IN THE PRESENCE OF
 THE COUNTY ENGINEER
 BEFORE WORK CAN BE STARTED, THE CONTRACTOR MUST OBTAIN A PERMIT TO
 CHANGE IN COUNTY STREETS FROM THE L.A. COUNTY ROAD DEPT. AND IN ADDI-
 TION MUST A DEPOSIT WITH THE COUNTY ENGINEER TO L.A. COUNTY ENGR-
 GERING BUILDINGS, SUFFICIENT TO COVER THE COST OF CONSTRUCTION INSPECTION
 AND EXCEED POINTS
 SIGNATURE OF THIS PLAN BY THE COUNTY OF LOS ANGELES DOES NOT CONSTITUTE
 A REPRESENTATION AS TO THE ACCURACY OF THE LOCATION OR AS THE EXISTENCE
 OR NON-EXISTENCE OF ANY UNDERGROUND UTILITY PIPE OR STRUCTURE WITHIN
 THE LIMITS OF THIS PROJECT THIS NOTICE APPLIES TO ALL SHEETS

COUNTY OF LOS ANGELES, CALIFORNIA
 APPROVED, WILLIAM J. THE COUNTY ENGINEER
 BY *H.L. Swales* CHIEF ENGINEER DIST. NO. 15
 BY *H.L. Swales* OFFICE ENGINEER
 CHECKED BY: *H.L. Swales* 12-9-52
 OFFICE OF COUNTY ENGINEER, REG. C.E. NO. 14514

B.M. S.G. 197-10 - Elev. 419.327
 L.S.T. IN CONC. DRIVEWAY TO
 HOUSE # 2003 AT THE S.W. COR.
 OF EUCLID AVE. & WESLEY AVE.

- NOTE:
 NO REPRESENTATIVE OF THE COUNTY ENGINEER SHALL SURVEY OR LAY OUT ANY PORTION
 OF THE WORK.
 THE OWNER OR HIS AUTHORIZED REPRESENTATIVE SHALL FURNISH THE COUNTY
 ENGINEER WITH BEARINGS, ANGLES AND STAKES FOR ALL NECESSARY CONNECTIONS AND
 Y BOUNDARIES AND SHALL PROVIDE STAKES FOR THEM AT THEIR PROPER
 LOCATIONS WITH STRONGLY PLAINLY MARKED ANY CHANGE IN LOCATION
 SHALL BE REQUESTED IN WRITING BY THE OWNER OR HIS REPRESENTATIVE.
 NO REVISIONS SHALL BE MADE IN THESE PLANS WITHOUT APPROVAL OF
 THE COUNTY ENGINEER.
1. USE STANDARD MANHOLE FRAME AND COVER, S-6-117
 2. USE STANDARD STRENGTH PIPE EXCEPT AS NOTED
 3. USE CEMENT MORTAR FOR ALL STRIPPED LEAD PIPE JOINTS
 4. ACCORDING TO ALL REVISIONS WITHIN GIVEN ORDER TO MEET L.A. COUNTY
 ROAD DEPT. REQUIREMENTS
 5. AVOID CORNERS FEET OF SEWER AT POINTS OF INTERFERENCE WITH
 ADJACENT S-6-118
 6. ALL SEWER CONNECTIONS TO BE CONSTRUCTED WITH INSETS AT PROPERTY
 LINE 5 FEET BELOW CURB GRADE
 7. ALL STRUCTURES SHALL BE GRADE SEWER STRUCTURES, S-6-104
 8. PROVIDE STAKES ON THE PROPERTY LINES OR PROPERTY LINE
 PRODUCE AT RIGHT ANGLES TO THE SEWER LINE AT THE CENTER LINE
 OF EACH MANHOLE
 9. STAKES TO BE INSTALLED WITH JOINT COMPOUND BY MANUFACTURER AT HIS
 PLANT, SPEC. SEC. 33, 48
 10. MANHOLE CIRCUMFERENCE TO BE NOT LESS THAN 4' IN DIAMETER WITH CONCRETE
 SOIL SPEC. SEC. 65
 11. INSTALL WIRE AND TIES, SPEC. SEC. 48

SHEET NO.	PAGES
1	1



INDEX MAP
 SCALE: 1" = 400'
 P.C. 2407 J.N.F. 273

Revised 36, C-5

Checked 12-9-52 *H.L. Swales*

GOODALL AVENUE
 15654
 P.C. 2407
 J.N.F. 273

Trm Line

