

PC 2431

PC 2431 J.N.
PAGE

PORTION OF RANCHO SAN ANTONIO
P. 1-389

PORT. OF RD. SAN ANTONIO
P. 1-389

GAYHART (PVT. RD.) STREET

GAYHART (PVT. RD.) ST.

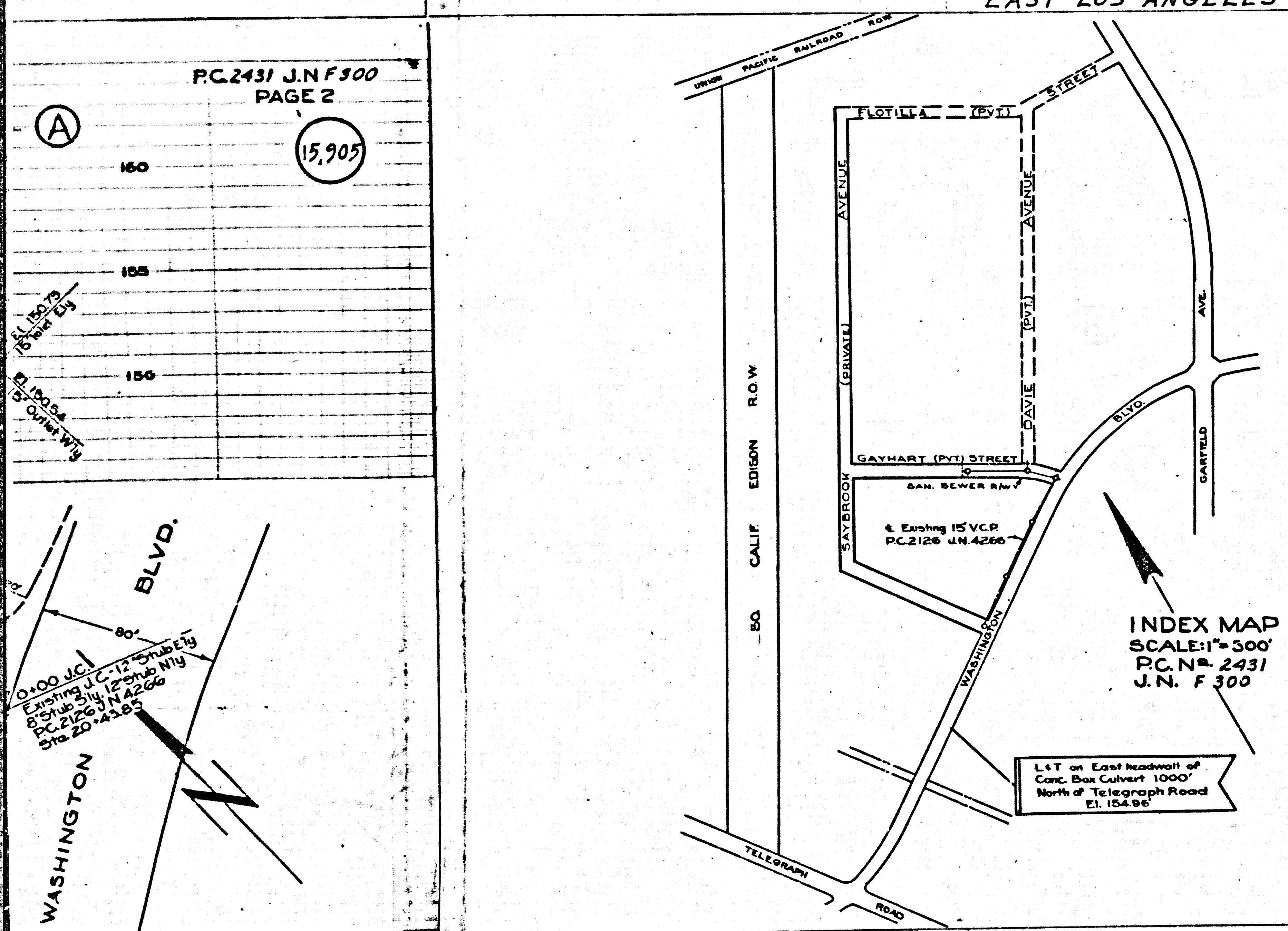
PORTION OF RANCHO SAN ANTONIO
P. 1-389

PORT. OF RD. SAN ANTONIO
P. 1-389

WASHINGTON BLVD.

DD

EAST LOS ANGELES



INDEX MAP
SCALE: 1" = 300'
P.C. N° 2431
J.N. F 300

- NOTE: NO REPRESENTATIVE OF THE COUNTY ENGINEER WILL SURVEY OR LAYOUT ANY PORTION OF THE WORK. THE OWNER OR HIS AUTHORIZED REPRESENTATIVE SHALL FURNISH THE COUNTY ENGINEER WITH GRADE SHEETS AND STATIONS FOR ALL HOUSE CONNECTION AND Y BRANCHED AND SHALL FURNISH STAKES FOR THEM AT THEIR PROPER LOCATIONS WITH STATIONING PLAINLY MARKED. ANY CHANGE IN LOCATION SHALL BE REQUESTED IN WRITING BY THE OWNER OR HIS REPRESENTATIVE. NO REVISIONS SHALL BE MADE IN THESE PLANS WITHOUT APPROVAL OF THE COUNTY ENGINEER.
1. USE STANDARD MANHOLE FRAMES AND COVERS. S-g-117
 2. USE STANDARD STRENGTH PIPE EXCEPT AS NOTED
 3. USE CEMENT MORTAR FOR ALL VITRIFIED CLAY PIPE JOINTS.
 4. RESURFACE ALL TRENCH WITHIN PAVED AREA TO MEET L.A. COUNTY ROAD DEPT. REQUIREMENTS
 5. ENCASE FOUR FEET OF SEWER AT POINTS OF INTERFERENCE WITH POLES, S-g-119
 7. ALL STRUCTURES SHALL BE BRICK SEWER STRUCTURES. S-g-104
 8. PROVIDE STAKES ON THE PROPERTY LINES OR PROPERTY LINES PRODUCED AT RIGHT ANGLES TO THE SEWER LINE AT THE CENTER LINE OF EACH MANHOLE STOPPED. TO BE INSTALLED WITH JOINT COMPOUND BY MANUFACTURER
 9. AT HIS PLANT, SPEC'S SEC. 33.48
 10. CONCRETE PAVEMENT TO BE CUT NOT LESS THAN 2" IN DEPTH WITH CONCRETE SAW. SPEC'S. SEC. 60
 11. INSTALL WIRE AND TAGS. SPEC'S. SEC. 48

SHEET NO	PAGES
1	2

P.C.2431 - J.N.F.300
PROFILE, ALIGNMENT AND GRADE OF
SANITARY SEWER
TO BE CONSTRUCTED IN
GAYHART STREET
(SANITARY SEWER R/W) Page 1

PRIVATE CONTRACT NO. 2431
W.S. 36
SHEET 1 OF 1 SHEETS
SCALE: VERT. 1" = 4'
HORIZ. 1" = 40'
SEPTEMBER, 1952

PREPARED IN THE OFFICES OF
CENTRAL MANUFACTURING DISTRICT, INC.
CHECKED AND APPROVED BY *Charles C. Miller*
REG. C.E. NO. 122
FOR LEGEND SEE PLAN NO. S-g-64

GRADES TO WHICH THIS IMPROVEMENT IS TO BE CONSTRUCTED ARE SHOWN ON PLANS AND PROFILES. GRADE POINTS FOR TOP OF CURBS, CENTER LINE OF STREETS, OR CENTER LINE OF ALLEY ARE SHOWN BY CIRCLES ON PROFILES. AT ALL POINTS BETWEEN DESIGNATED POINTS THE GRADE SHALL BE ESTABLISHED SO AS TO CONFORM TO A STRAIGHT LINE DRAWN BETWEEN SAID DESIGNATED POINTS. ELEVATIONS ARE IN FEET ABOVE U.S.S. DATUM OR MEAN SEA LEVEL. THIS DRAWING AND THE DATA HEREON ARE HEREBY MADE A PART OF THE SPECIFICATIONS. WORK SHALL BE CONSTRUCTED ACCORDING TO SPECIFICATIONS ON FILE IN THE OFFICE OF THE COUNTY ENGINEER AND SHALL BE PROSECUTED ONLY IN THE PRESENCE OF THE COUNTY ENGINEER. BEFORE WORK CAN BE STARTED THE CONTRACTOR MUST OBTAIN A PERMIT TO EXCAVATE IN COUNTY STREETS FROM THE L.A. COUNTY ROAD DEPT., 108 W. 2nd ST. AND MAKE A DEPOSIT WITH THE COUNTY ENGINEER, 733 L.A. COUNTY ENGINEERING BUILDING, SUFFICIENT TO COVER THE COST OF CONSTRUCTION, INSPECTION AND RECORD PLANS. APPROVAL OF THIS PLAN BY THE COUNTY OF LOS ANGELES DOES NOT CONSTITUTE A REPRESENTATION AS TO THE ACCURACY OF THE LOCATION OF, OR THE EXISTENCE OR NON-EXISTENCE OF, ANY UNDERGROUND UTILITY PIPE OR STRUCTURE WITHIN THE LIMITS OF THIS PROJECT. THIS NOTE APPLIED TO ALL SHEETS.

COUNTY OF LOS ANGELES, CALIFORNIA
APPROVED, WILLIAM J. FOX, COUNTY ENGINEER
BY *Ful. Pore*
ASST. CHIEF DEPUTY
APPROVED, A.M. RAWIN
CHIEF ENGR. DIST. NO. 2
BY *[Signature]*
OFFICE ENGINEER
CHECKED BY: *A.L. [Signature]*
OFFICE OF COUNTY ENGINEER, REG. C.E. NO. 672

Checked 3-17-53 *William*

GAYHART STREET
15,904
RECEIVED
MW 10 1952
L.A. COUNTY ENGINEER
SANITATION DIVISION
B.C. 5731
J.N. F300

12