

P.C. 2434 J.N.F. 504  
SHEET 1

16,738

185  
180  
175

B.M. 5.V. 2294, L & T. In S.W. Cor  
Conc. Walk in Front of House #3638 on  
Durfee Ave. 180' East of Intersection  
of Cate Rd. & Durfee Ave. Elev. 197.238

B.M. 5.V. 2291, L & T. In Center of  
Conc. Walk To House #2360, Durfee Ave  
168' E. of Durfee 130' N. of E. of  
Friendship Ave. E. 0.30' N. of Beginning  
of Walk Ref 927-1028 - S&W-195765

- NOTE:  
NO REPRESENTATIVE OF THE COUNTY ENGINEER WILL SURVEY OR LAY OUT ANY PORTION OF THE WORK.  
THE OWNER OR HIS AUTHORIZED REPRESENTATIVE SHALL FURNISH THE COUNTY ENGINEER WITH GRADE SHEETS AND STATIONS FOR ALL HOUSE CONNECTIONS AND BRANCHES AND SHALL PROVIDE STAKES FOR THEM AT THEIR PROPER LOCATIONS WITH STATIONING PLAINLY MARKED. ANY CHANGE IN LOCATION SHALL BE REQUESTED IN WRITING BY THE OWNER OR HIS REPRESENTATIVE.  
NO REVISIONS SHALL BE MADE IN THESE PLANS WITHOUT APPROVAL OF THE COUNTY ENGINEER.
1. USE STANDARD MANHOLE FRAMES AND COVERS, S-8-117.
  2. USE STANDARD STRENGTH PIPE EXCEPT AS NOTED.
  3. USE CEMENT MORTAR FOR ALL VITRIFIED CLAY PIPE JOINTS.
  4. RESURFACE ALL TRENCH WITHIN PAVED AREA TO MEET L.A. COUNTY ROAD DEPT. REQUIREMENTS.
  5. ENCASE FOUR FEET OF SEWER AT POINTS OF INTERFERENCE WITH POLES, S-8-119.
  6. HOUSE CONNECTIONS TO BE CONSTRUCTED WITH INVERTS AT PROPERTY LINE 4 FEET BELOW CURB GRADE.
  7. ALL STRUCTURES SHALL BE BUILT TO SPECIFICATIONS S-8-104.
  8. PROVIDE STAKES ON THE PROPERTY LINES OR PROPERTY LINES PRODUCED AT RIGHT ANGLES TO THE SEWER LINE AT THE CENTER LINE OF EACH MANHOLE.
  9. STOPPERS TO BE INSTALLED WITH JOINT COMPOUND BY MANUFACTURER AT HIS PLANT, SPECS. SEC. 33.48.
  10. CONCRETE PAVEMENT TO BE CUT NOT LESS THAN 2" IN DEPTH WITH CONCRETE S&W SPECS. SEC. 65.
  11. INSTALL WIRE AND TAGS, SPECS. SEC. 48.

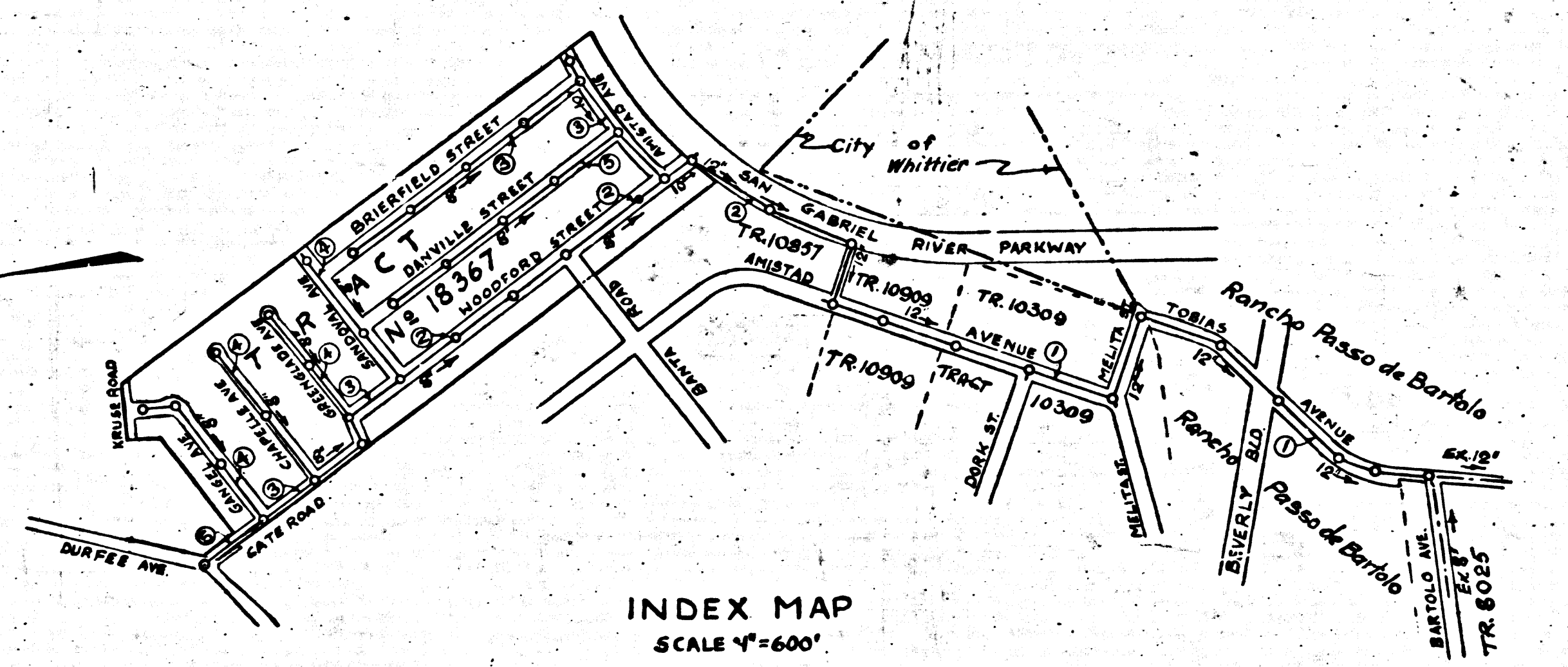
PAGE 1  
PROFILE ALIGNMENT AND GRADE OF  
SANITARY SEWERS  
TO BE CONSTRUCTED IN  
TRACT NO 18367

PRIVATE CONTRACT NO 2434  
W.S. 37  
SHEET 1 OF 5 SHEETS  
SCALE: VERT 1"=4'  
HORIZ 1"=40'  
DEC. 1952  
PREPARED IN THE OFFICES OF  
ADAMS & ELLS - ENGINEERS - EL MONTE, CALIF.  
BY [Signature]  
REG. C.E. NO. 217  
FOR LEGEND SEE PLAN NO S-9-64

NOTE:  
GRADES TO WHICH THIS IMPROVEMENT IS TO BE CONSTRUCTED ARE SHOWN ON PLANS AND PROFILES. GRADE POINTS FOR TOP OF CURBS, CENTER LINE OF STREETS, OR CENTER LINE OF ALLEY ARE SHOWN BY CIRCLES ON PROFILES AT ALL POINTS BETWEEN DESIGNATED POINTS. THE GRADE SHALL BE ESTABLISHED SO AS TO CONFORM TO A STRAIGHT LINE DRAWN BETWEEN SAID DESIGNATED POINTS. ELEVATIONS ARE IN FEET ABOVE U.S.S. DATUM OR MEAN SEA LEVEL.  
THIS DRAWING AND THE DATA HEREON ARE HEREBY MADE A PART OF THE SPECIFICATIONS. WORK SHALL BE CONSTRUCTED ACCORDING TO SPECIFICATIONS ON FILE IN THE OFFICE OF THE COUNTY ENGINEER AND SHALL BE PROSECUTED ONLY IN THE PRESENCE OF THE COUNTY ENGINEER. BEFORE WORK CAN BE STARTED THE CONTRACTOR MUST OBTAIN A PERMIT TO EXCAVATE IN COUNTY STREETS FROM THE L.A. COUNTY ROAD DEPT., JOB # 204 32 AND MAKE A DEPOSIT WITH THE COUNTY ENGINEER, 733 L.A. COUNTY ENGINEERING BUILDING, SUFFICIENT TO COVER THE COST OF CONSTRUCTION INSPECTION AND RECORD PLANS.  
APPROVAL OF THIS PLAN BY THE COUNTY OF LOS ANGELES DOES NOT CONSTITUTE A REPRESENTATION AS TO THE ACCURACY OF THE LOCATION OF OR THE EXISTENCE OR NON-EXISTENCE OF ANY UNDERGROUND UTILITY, PIPE, OR STRUCTURE WITHIN THE LIMITS OF THIS PROJECT. THIS NOTE APPLIES TO ALL SHEETS.

COUNTY OF LOS ANGELES, CALIFORNIA  
APPROVED, WILLIAM J. FOX, COUNTY ENGINEER.  
BY [Signature] CHIEF DEPUTY  
APPROVED, A.M. RAWIN, CHIEF ENGR. CALIF. DIST. NO. 2  
BY [Signature] OFFICE ENGINEER  
CHECKED BY [Signature] 1-7-53  
OFFICE OF COUNTY ENGINEER, REG. C.E. NO. 217-60

SHEET NO	PAGES
1	1-4
2	5-8
3	9-12
4	13-16
5	17-18



INDEX MAP  
SCALE 1"=600'  
P.C. 2434 J.N.F. 504

Recorded 7-21-53 McEwen

RECEIVED  
18 1953  
L.A. COUNTY ENGINEER  
SANITATION DIVISION  
16,737  
16,738  
16,739

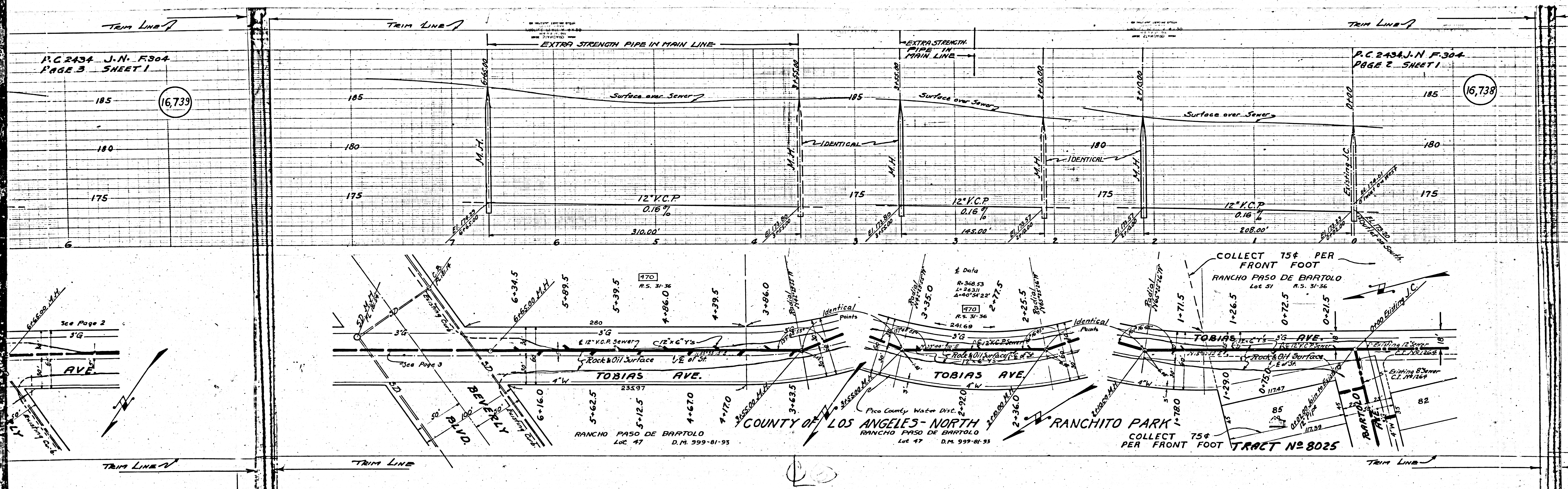


P.C. 2434 J.N. F.304  
PAGE 3 SHEET 1

P.C. 2434 J.N. F.304  
PAGE 2 SHEET 1

16,739

16,738



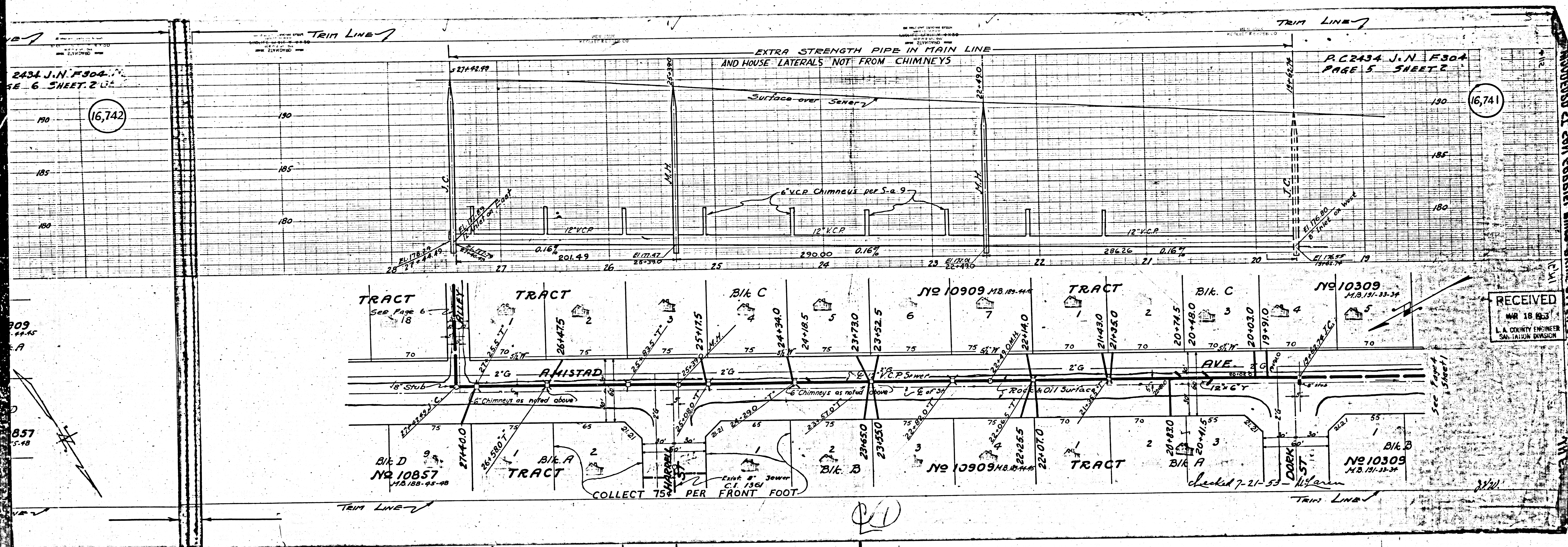












2434 J.N.F304  
 SE 6 SHEET 2

P.C. 2434 J.N.F304  
 PAGE 5 SHEET 2

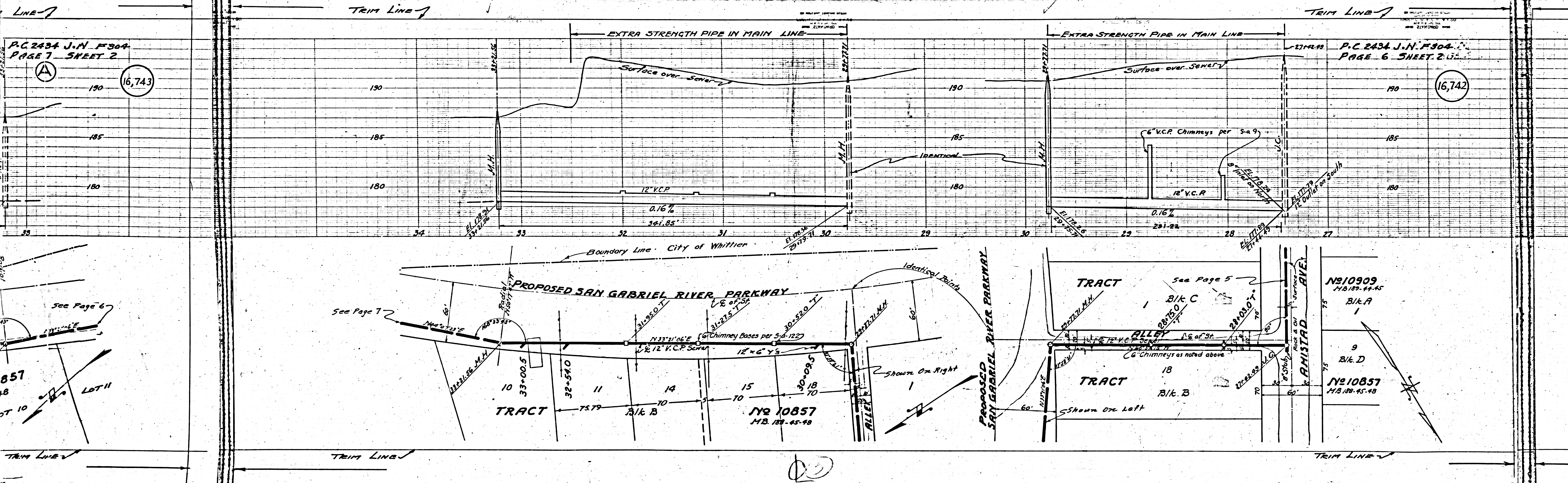
16,742

16,741

RECEIVED  
 APR 18 1953  
 L.A. COUNTY ENGINEER  
 SANITATION DIVISION

SANITARY SEWER LINE PLAN CITY OF LOS ANGELES



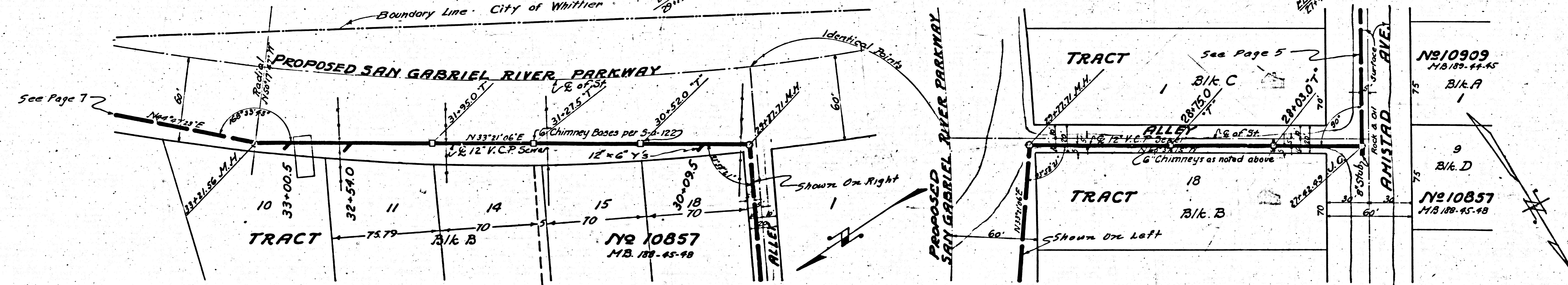
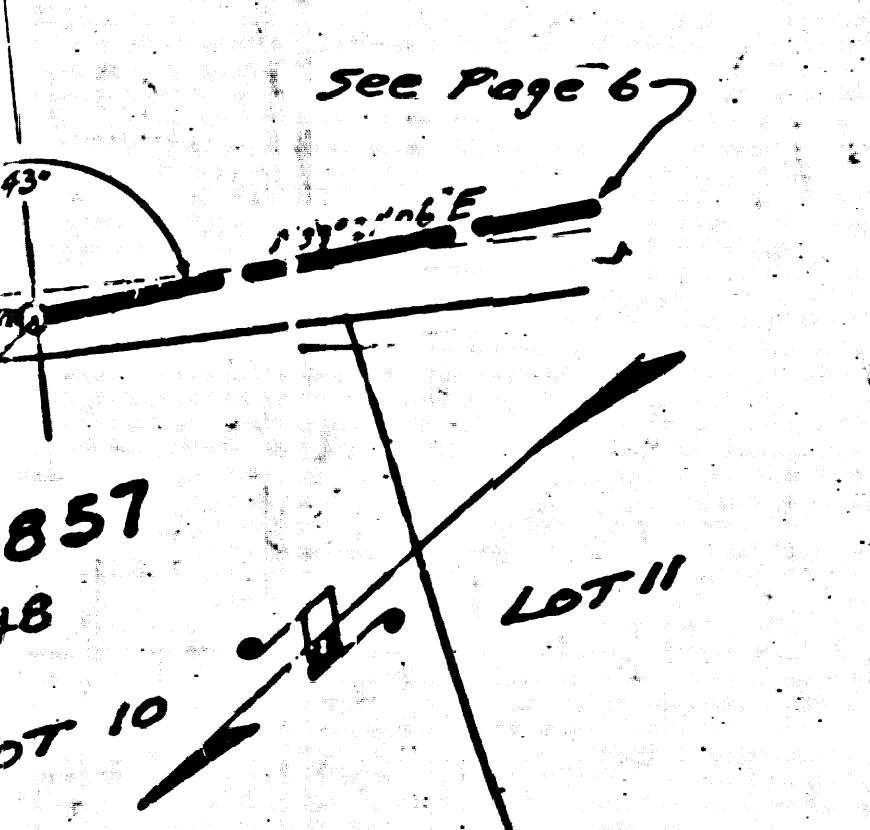


P.C. 2434 J.N. F304  
PAGE 7 SHEET 2

P.C. 2434 J.N. F304  
PAGE 6 SHEET 2

(A) 16,743

16,742



10

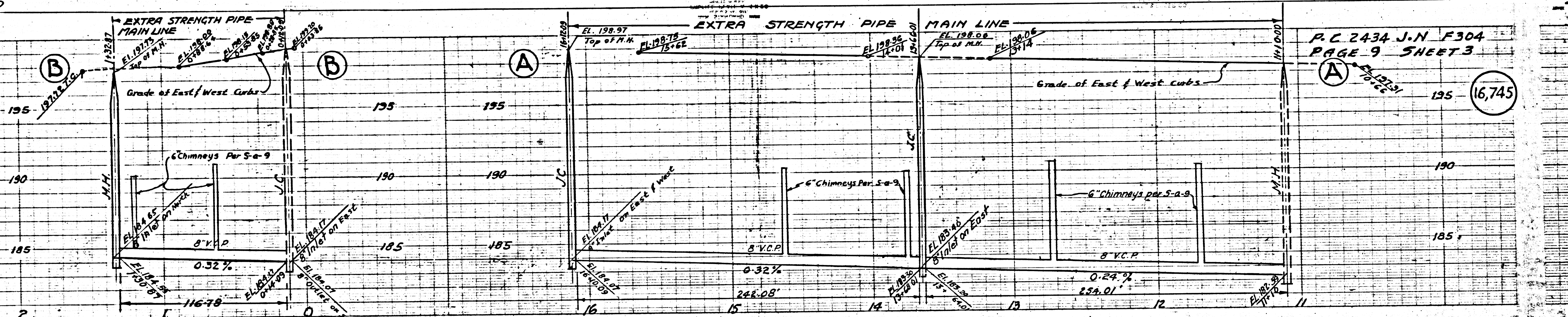








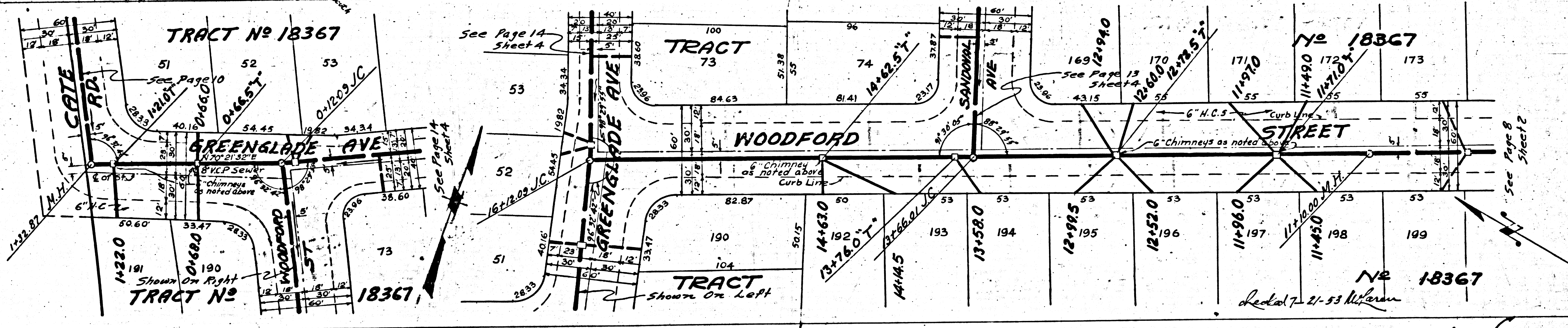




P.C. 2434 J.N. F304  
PAGE 9 SHEET 3

3 CALIF. RD. GUNLISD AVE BIRBELEN  
MODESTO ST. CHESTER AVE

RECEIVED  
L.A. COUNTY ENG. DIVISION  
J.N. F304  
P.C. 2434

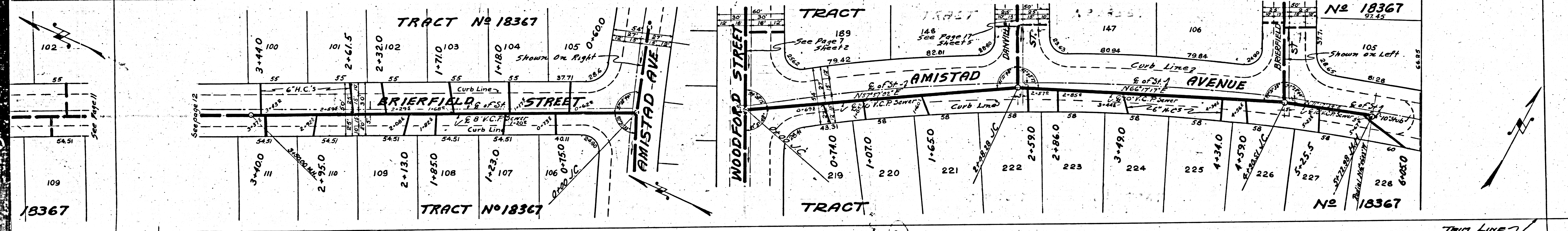
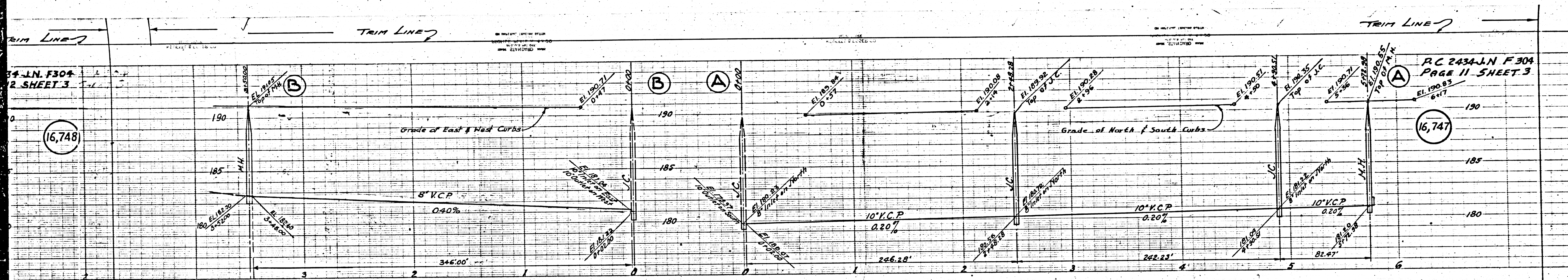


(11)





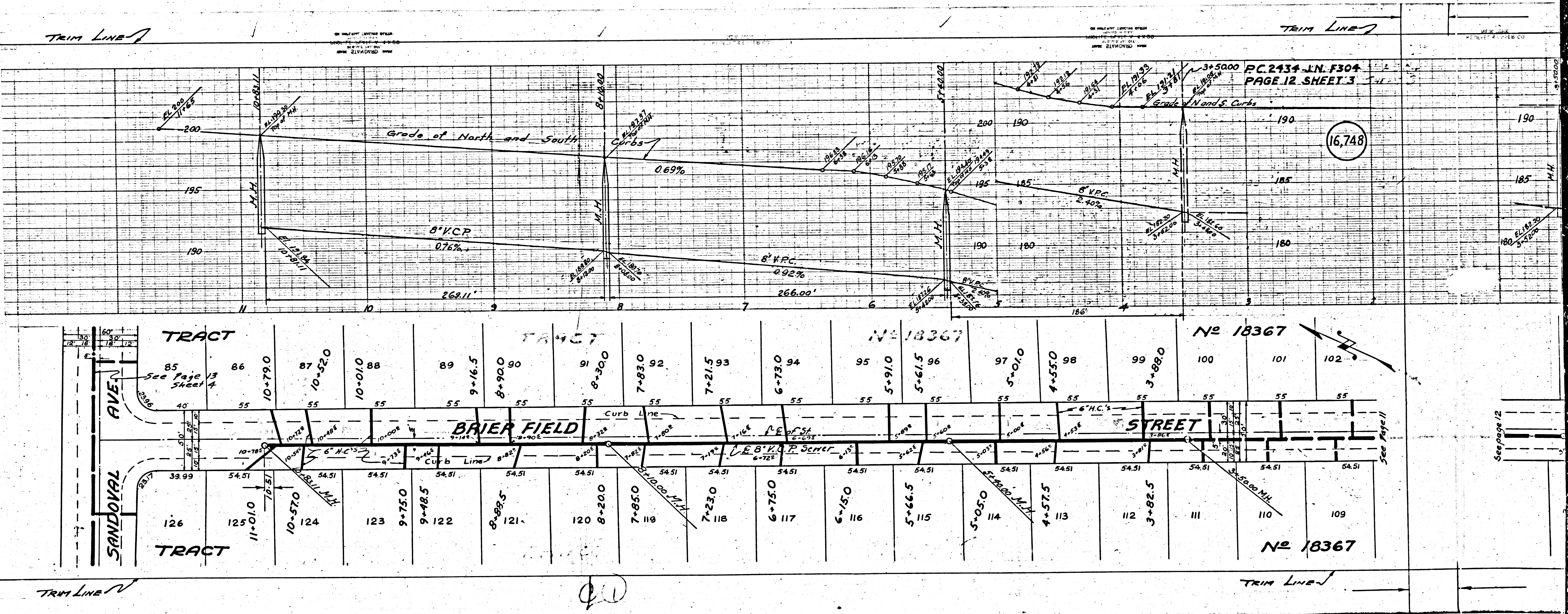






③ CATE RD, GREENWIDE AVE, WOODFORD ST, WINDSTAD AVE  
③ Brierfield St. 11-23-04

PC 2434



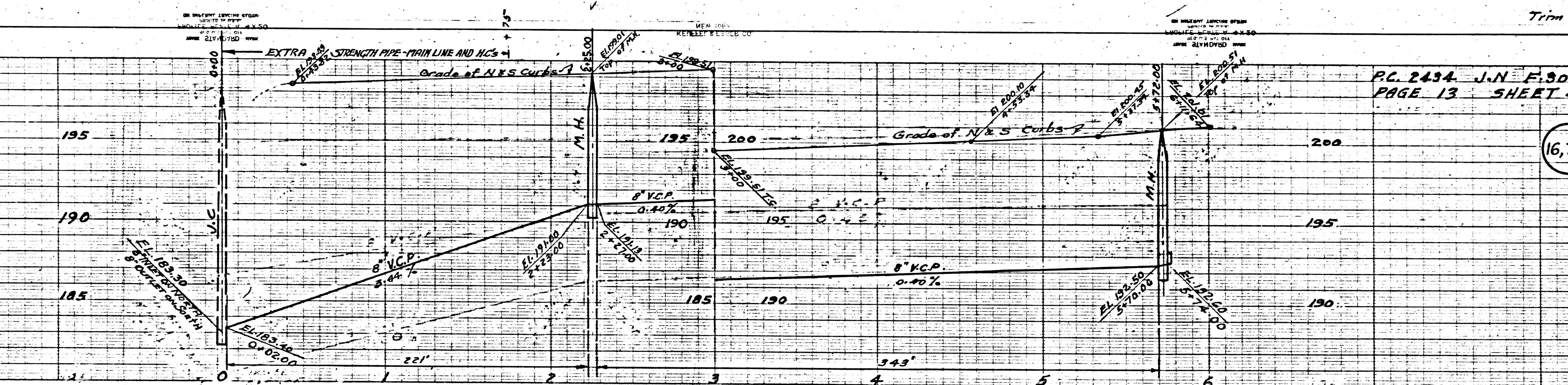
See page 12

See page 11



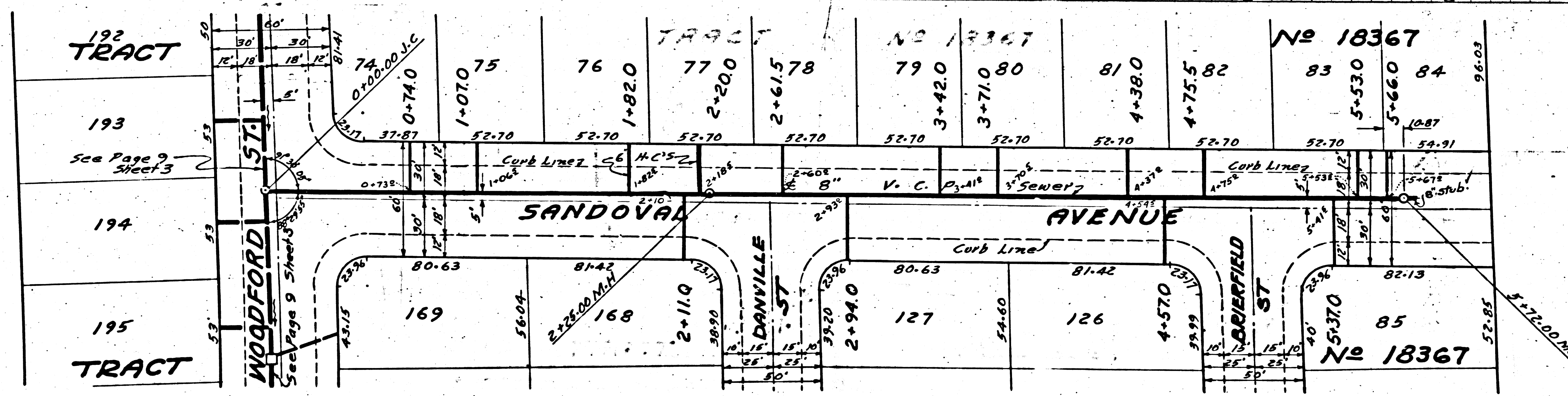
Trim Line

Trim Line



P.C. 2434 J.N. E.304  
PAGE 13 SHEET 4

16,749



Checked 7-21-53 W. L. Laren

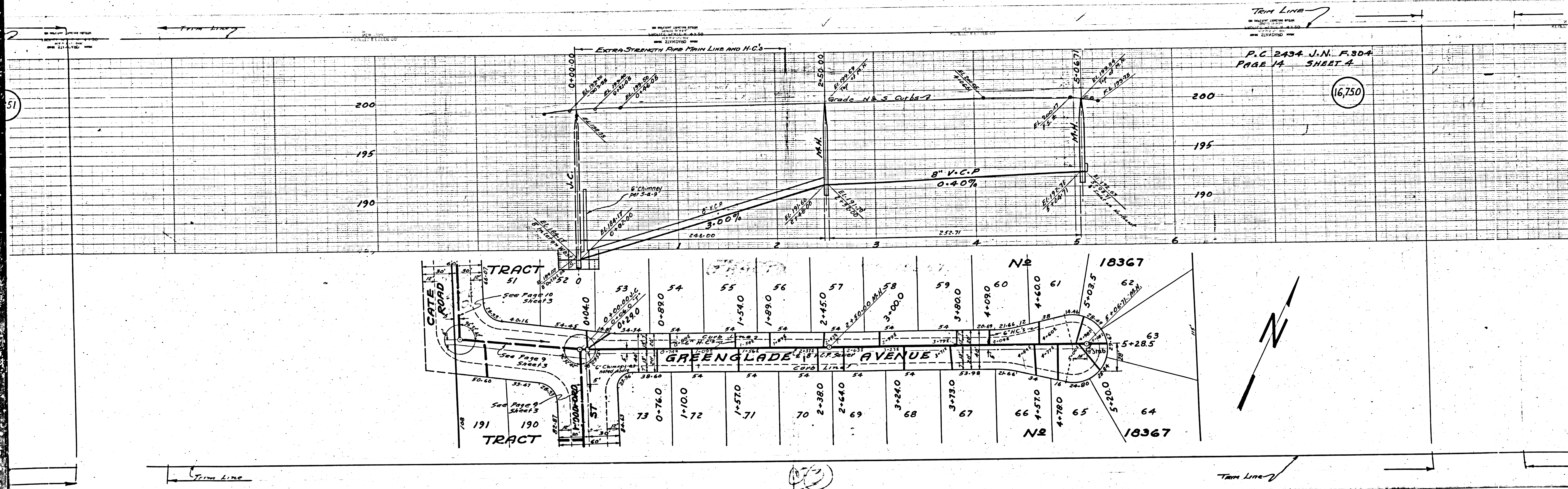
Sandoval Ave. Danville St. Greenfield St. Woodford St.  
 RECEIVED  
 CIVIL ENGINEER  
 SANITATION DIV.  
 J.N. E.304  
 P.C. 2434

Trim Line

Trim Line

14





P.C. 2434 J.N. F.304  
 PAGE 14 SHEET 4  
 16,750

51

200

195

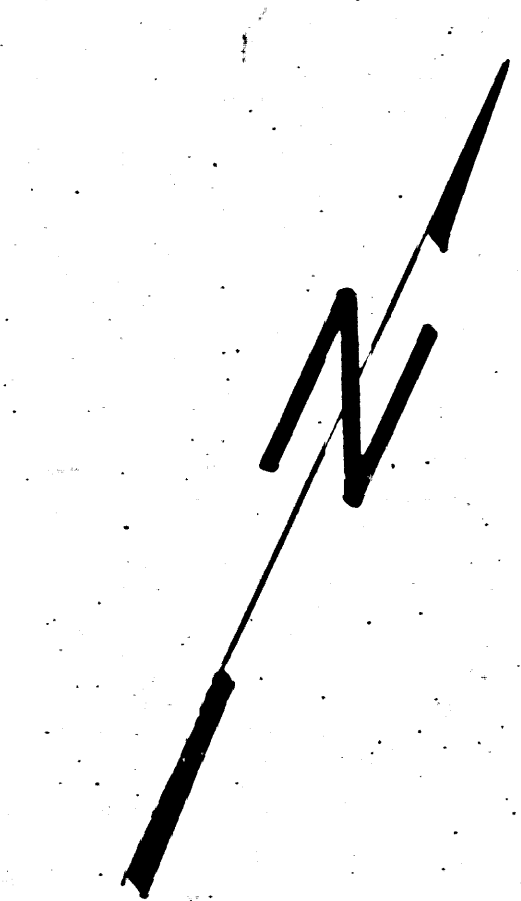
190

200

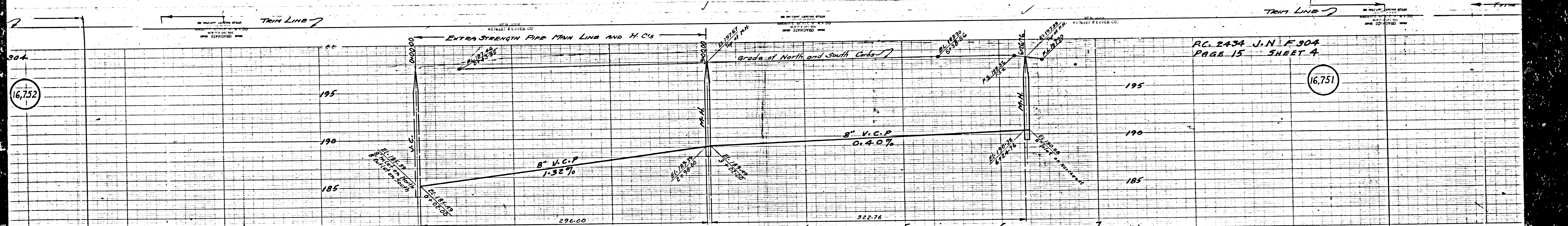
195

190

Lot No.	Area	Notes
51	See Page 10 Sheet 13	
52	See Page 9 Sheet 13	
53	See Page 9 Sheet 13	
54	0-890	
55	1-540	
56	1-890	
57	2-450	
58	2-2000 M.H. 58	
59	3-000	
60	4-090	
61	4-600	
62	5-035	
63	5-285	
64	5-200	
73	0-760	
70	2-380	
69	2-640	
68	3-240	
67	3-730	
66	4-570	
65	4-780	



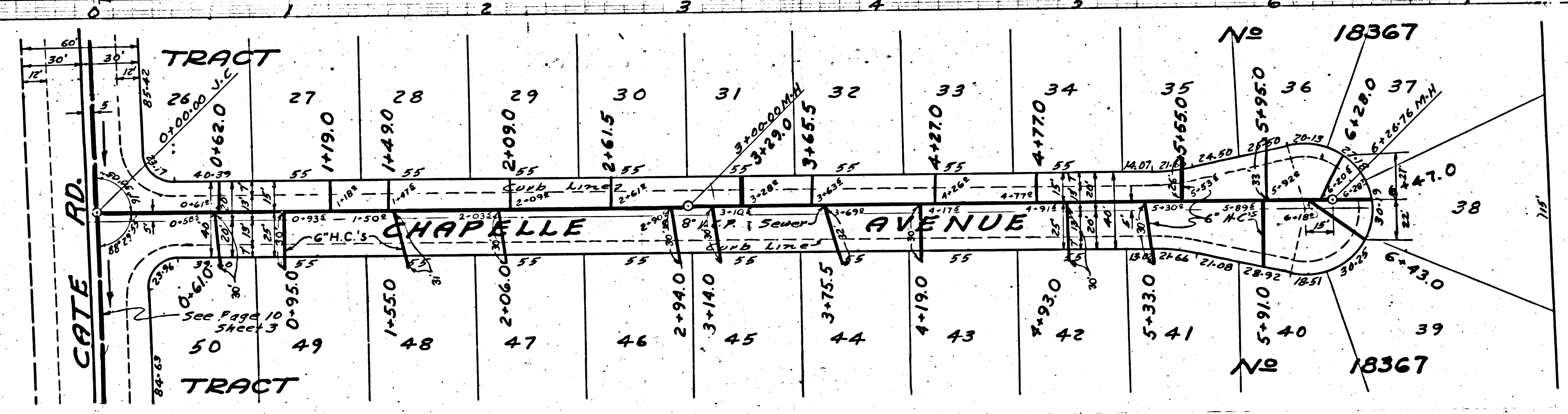




PC. 2434 J.N.F. 304  
PAGE 15 SHEET 4

16,752

16,751

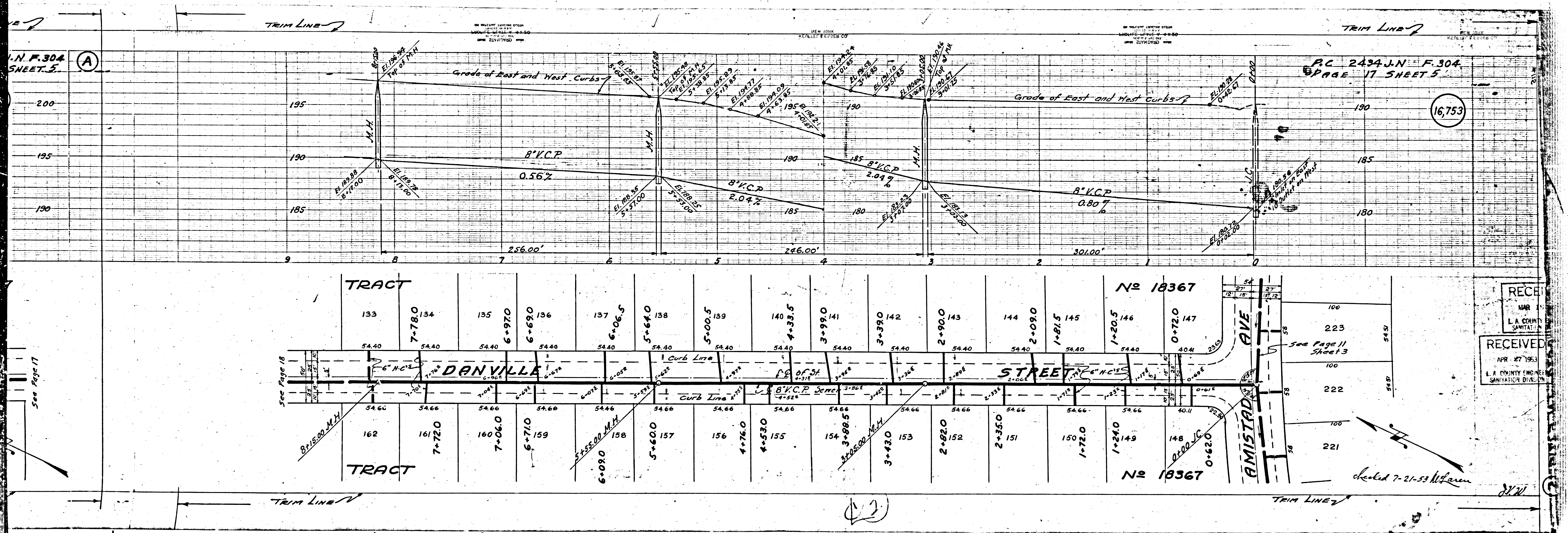


(2)









N.N. F. 304  
SHEET 5

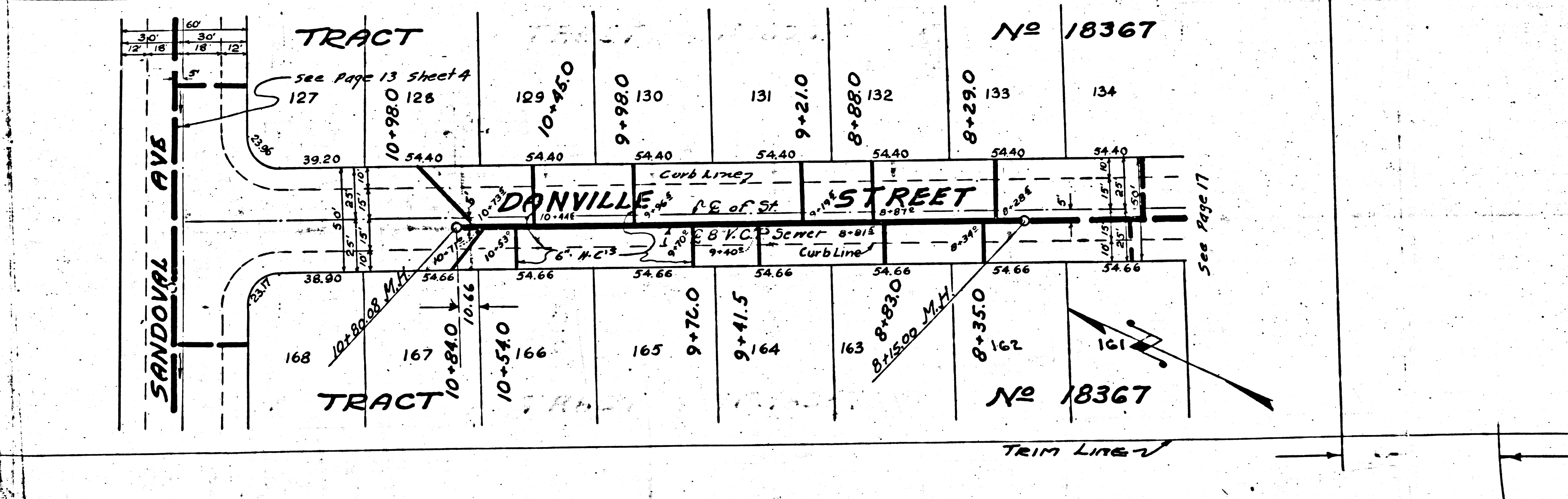
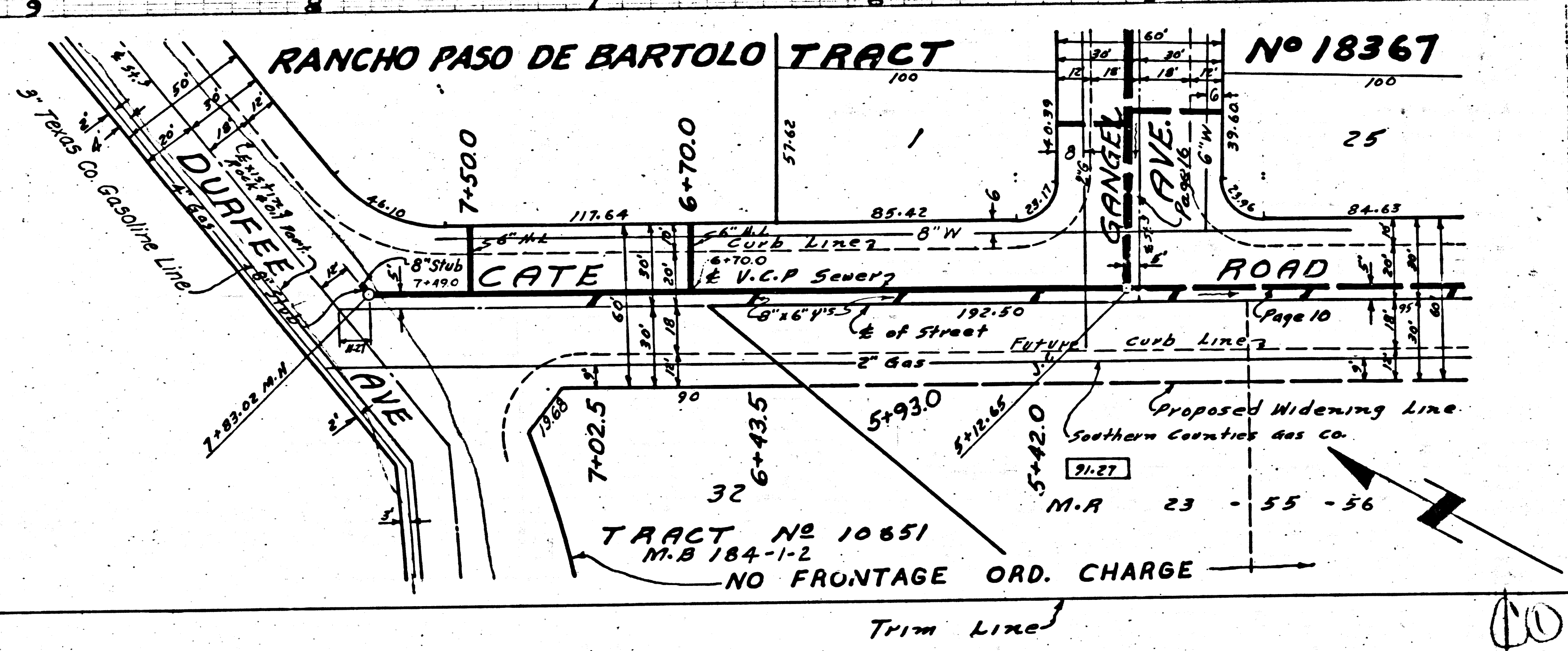
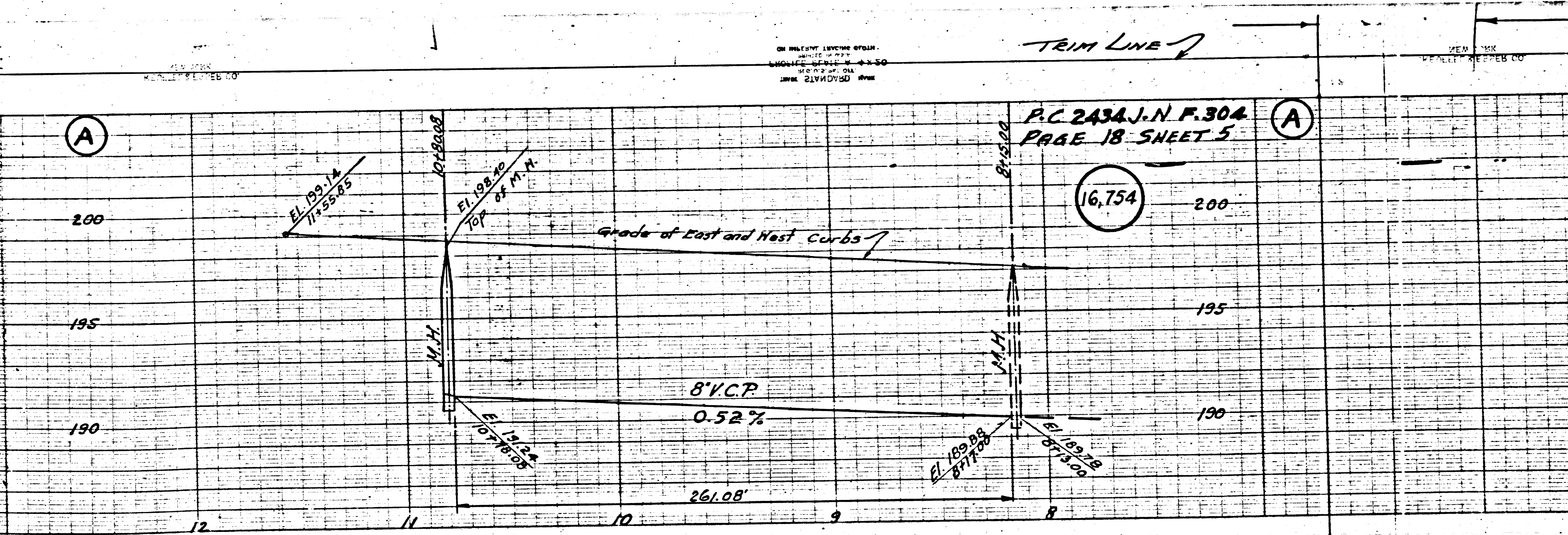
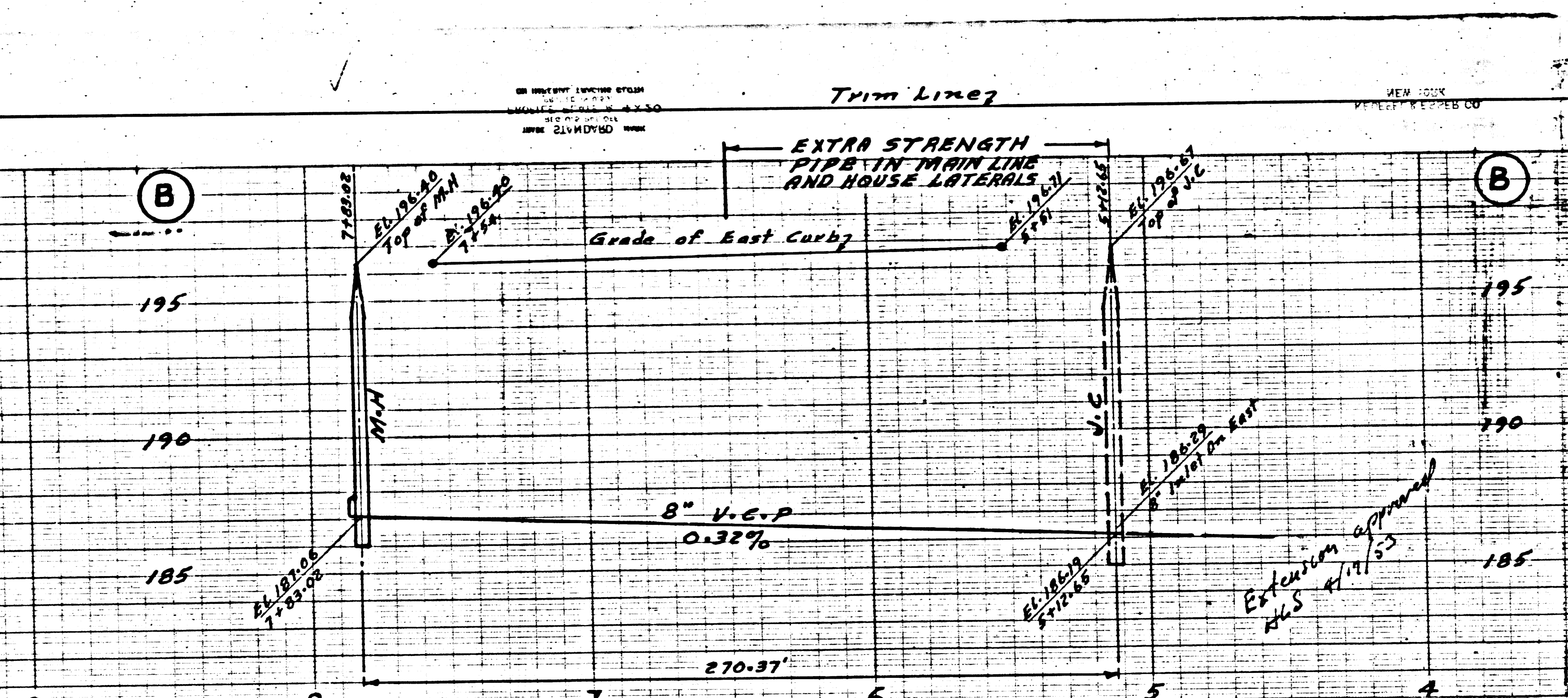
P.C. 2434 J.N. F. 304  
PAGE 17 SHEET 5

16,753

RECEIVED  
MAR 15 1953  
L.A. COUNTY  
SANITATION DIVISION

checked 7-21-53 HLF:am





PC 2434

P.C. 2434 J.N.F. 304  
PAGE 18 SHEET 5

NO FRONTAGE ORD. CHARGE

See Page 17