

P.C. 2437  
J.N.F. 308  
PAGE 2

15,933

S.M. 51, 1883 Elev. 110.15  
Rives & Luvor St.  
4' 6" - 11' West of curb return  
at Southwest corner.

DOWNNEY

- NOTE: NO REPRESENTATIVE OF THE COUNTY ENGINEER WILL SURVEY OR LAY OUT ANY PORTION OF THE WORK.
- THE OWNER OR HIS AUTHORIZED REPRESENTATIVE SHALL FURNISH THE COUNTY ENGINEER WITH GRADE SHEETS AND STATIONS FOR ALL HOUSE CONNECTIONS AND Y BRANCHES AND SHALL PROVIDE STAKES FOR THEM AT THEIR PROPER LOCATIONS WITH STATIONING PLAINLY MARKED. ANY CHANGE OF LOCATIONS SHALL BE REQUESTED IN WRITING BY THE OWNER OR HIS REPRESENTATIVE.
- NO REVISIONS SHALL BE MADE IN THESE PLANS WITHOUT APPROV. OF THE COUNTY ENGINEER.
1. USE STANDARD MANHOLE FRAMES AND COVERS, 5-1117, EXCEPT AS NOTED
  2. USE STANDARD STRENGTH PIPE EXCEPT AS NOTED
  3. USE CEMENT MORTAR FOR ALL VITRIFIED CLAY PIPE JOINTS.
  4. RESURFACE ALL TRENCH WITHIN PAVED AREA TO MEET L.A. COUNTY ROAD DEPT. REQUIREMENTS
  5. ENCASE FOUR FEET OF SEWER AT POINTS OF INTERFERENCE WITH POLES, 5-4119
  6. THOSE CONNECTIONS TO BE CONSTRUCTED WITH INVERT AT PROPERTY LINE 4 FEET BELOW CURB GRADE, EXCEPT AS NOTED
  7. ALL STRUCTURES SHALL BE BRICK SEWER STRUCTURES, 5-1118, EXCEPT AS NOTED
  8. PROVIDE STAKES ON THE PROPERTY LINES OR PROPERTY LINES PROJECTIONS AT RIGHT ANGLES TO THE SEWER LINE AT THE CENTER LINE OF EACH MANHOLE.
  9. STOPPERS TO BE INSTALLED WITH JOINT COMPOUND BY MANUFACTURER AT HIS PLANT. SPECS. SEC. 33, 48.
  10. CONCRETE PAVEMENT TO BE CUT NOT LESS THAN 2" IN DEPTH WITH CONCRETE SAW. SPECS. SEC. 65.
  11. INSTALL WIRE TAGS. SPECS. SEC. 48.

PROFILE, ALIGNMENT AND GRADE OF  
**SANITARY SEWERS**  
TO BE CONSTRUCTED IN  
TRACT NO. 18424

PRIVATE CONTRACT NO. 2437  
W.S. 32  
SHEET 1 OF 1 SHEET

SCALE: VERT. 1"=4'  
HORIZ. 1"=40' OCT. 1952

PREPARED IN THE OFFICES OF  
**BARNETT, HOPEN & SMITH**  
BY Harold H. Barnett  
REG. C.E. NO. 1216

FOR LEGEND SEE PLAN NO. S-6-66

GRADES TO WHICH THIS IMPROVEMENT IS TO BE CONSTRUCTED ARE SHOWN ON PLANS AND PROFILES. GRADE POINTS FOR TOP OF CURB, CENTER LINE OF STREET, OR CENTER LINE OF ALLEY ARE SHOWN BY CIRCLES ON PROFILES. AT ALL POINTS BETWEEN DESIGNATED POINTS THE GRADE SHALL BE ESTABLISHED SO AS TO CONFORM TO A STRAIGHT LINE DRAWN BETWEEN SAID DESIGNATED POINTS. ELEVATIONS ARE IN FEET ABOVE U.S.G.S. DATUM OR MEAN SEA LEVEL.

THIS DRAWING AND THE DATA HEREON ARE HEREBY MADE A PART OF THE SPECIFICATIONS.

WORK SHALL BE CONSTRUCTED ACCORDING TO SPECIFICATIONS ON FILE IN THE OFFICE OF THE COUNTY ENGINEER AND SHALL BE PROSECUTED ONLY IN THE PRESENCE OF THE COUNTY ENGINEER.

BEFORE WORK CAN BE STARTED THE CONTRACTOR MUST OBTAIN A PERMIT TO EXCAVATE IN COUNTY STREETS FROM THE L.A. COUNTY ROAD DEPT. 808 W. 2<sup>ND</sup> ST. AND MAKE A DEPOSIT WITH THE COUNTY ENGINEER, 733 COUNTY ENGINEERING BUILDING SUFFICIENT TO COVER THE COST OF CONSTRUCTION INSPECTION AND RECORD PLANS.

APPROVAL OF THIS PLAN BY THE COUNTY OF LOS ANGELES DOES NOT CONSTITUTE A REPRESENTATION AS TO THE ACCURACY OF, OR THE EXISTENCE OR NON-EXISTENCE OF, ANY UNDERGROUND UTILITY, PIPE, OR STRUCTURE WITHIN THE LIMITS OF THIS PROJECT.

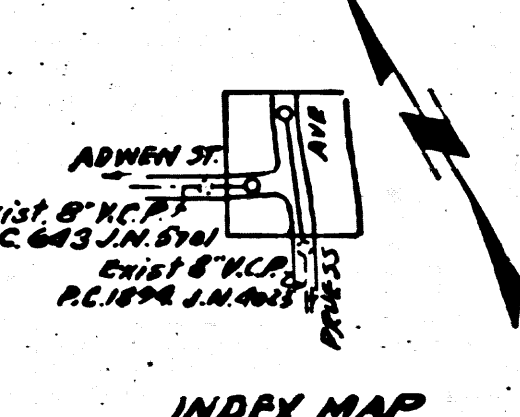
COUNTY OF LOS ANGELES, CALIFORNIA  
WILLIAM E. FOX  
COUNTY ENGINEER

A. M. RAY  
REGISTERED CIVIL ENGINEER  
EXPIRES JANUARY 1, 1953

APPROVED BY: *W. E. Fox*

CHECKED BY: *Richard E. Kuboni*

checked 3-17-53 *McLaren*



INDEX MAP  
TRACT NO. 18424  
Scale: 1"=600'  
P.C. 2437 J.N.F. 308

P.C. 2437 /  
J.N.F. 308  
Page 1.

15,932

RECEIVED  
OCT 13 1952  
COUNTY ENGINEER  
11 31 PM 1952

RECEIVED  
OCT 13 1952  
COUNTY ENGINEER  
11 31 PM 1952

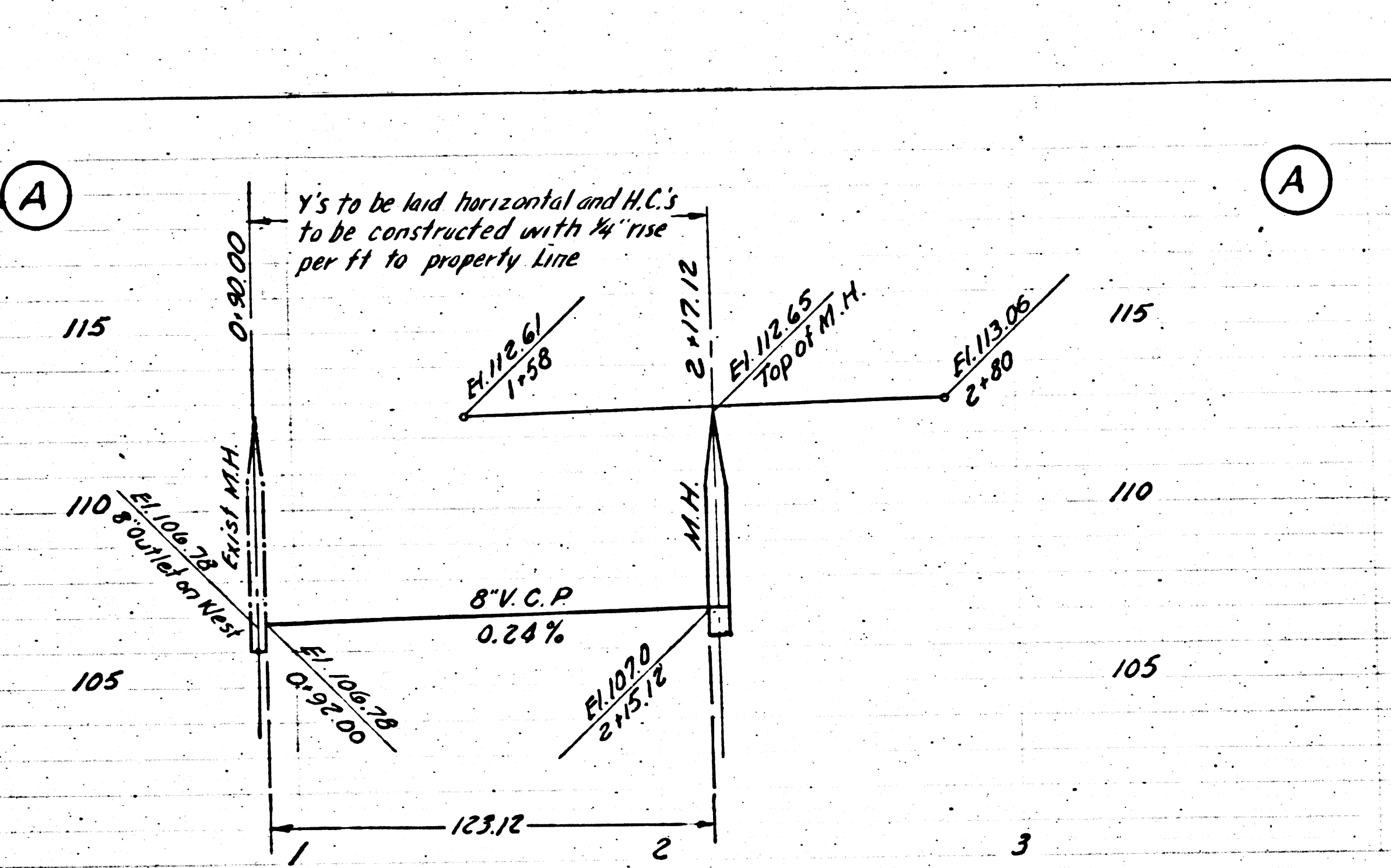
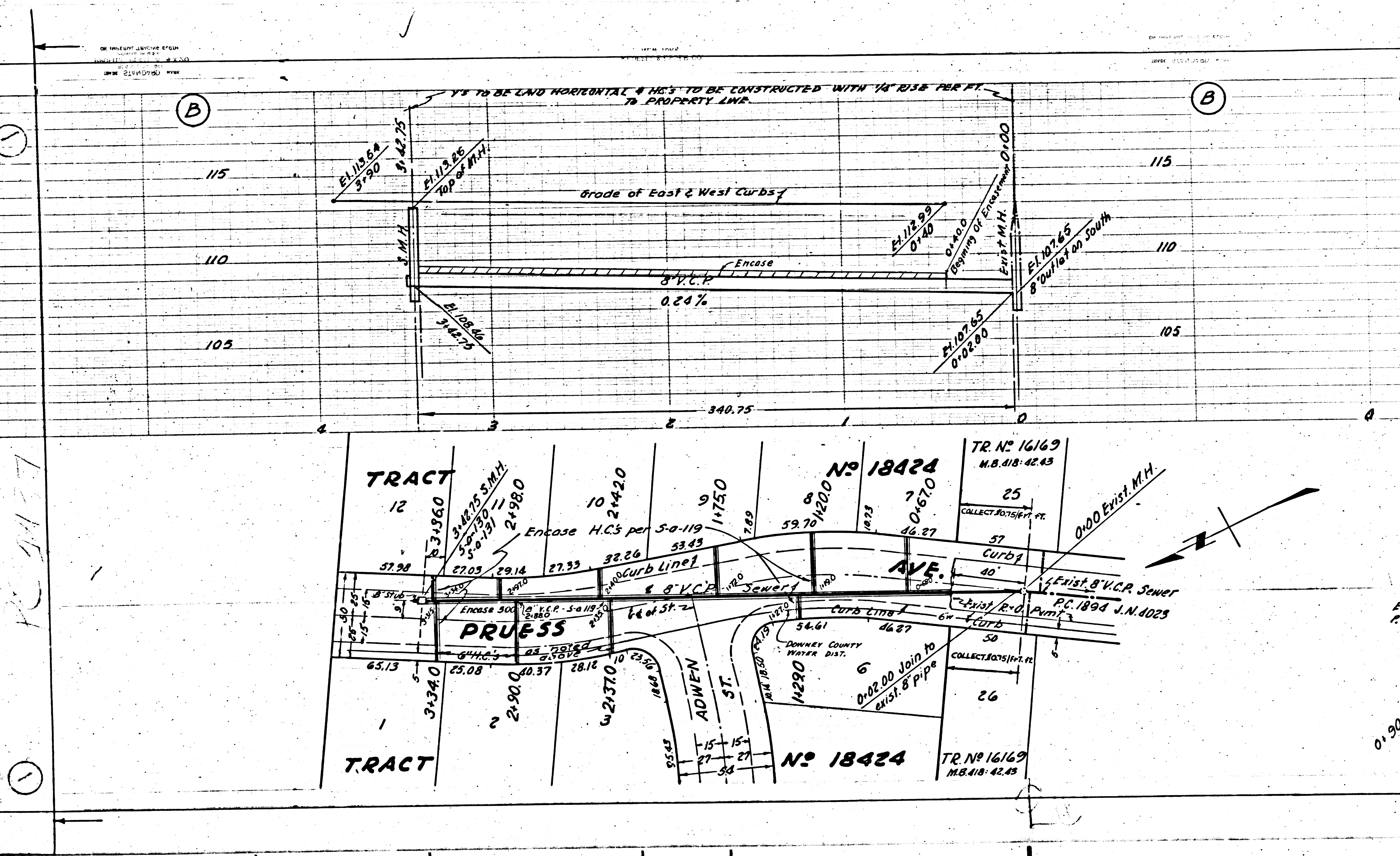
J.N.F. 308  
P.C. 2437

284

Trim Line



18454  
ADWEN ST  
661522  
18454



P.C. 2437  
J.N.F-308  
PAGE 2  
15,933

