

SAN DIMAS BLDG. DIST. 3

PROFILE ALIGNMENT AND GRADE OF
SANITARY SEWERS
TO BE CONSTRUCTED IN

HARRISON AVENUE
FROM 104 FT. E. OF SUMNER AVE.
TO 156 FT. W. OF SUMNER AVE.

TRACT NO. 17919

PRIVATE CONTRACT NO. 2457
W.S. 49

SHEET 1 OF 1 SHEETS
SCALE - Vertical 1"=4'
Horizontal 1"=40'

PREPARED IN THE OFFICE OF
W.M. H. FAIR JR.
BY *William H. Fair Jr.*
FOR LEGEND SEE PLAN NO. 5-B-64.

NOTE:
Elevations to which this improvement is to be constructed are shown on plans and profile grade points for top of curbs, centerline of streets, or centerline of alley are shown by circles or points at all points. Between designated points the grade shall be established so as to conform to a straight line drawn between said designated points. Elevations are in feet above U.S.C.S. Datum or mean sea level.
This drawing and the data herein are hereby made a part of the specifications. Work shall be constructed according to specifications on file in the office of the County Engineer and shall be prosecuted only in the presence of the County Engineer. Before work can be started the contractor must obtain a permit to excavate in city streets from the L.A. County Road Dept. 106 W. End St. and make a deposit with the County Engineer 783 L.A. County Engineering Building sufficient to cover the cost of construction inspection and record plans.
Approval of this plan by the County of Los Angeles does not constitute a representation as to the accuracy of the location of or the existence or non-existence of any underground utility, pipe or structure within the limits of this project. This note applies to all sheets.

COUNTY OF LOS ANGELES, CALIFORNIA

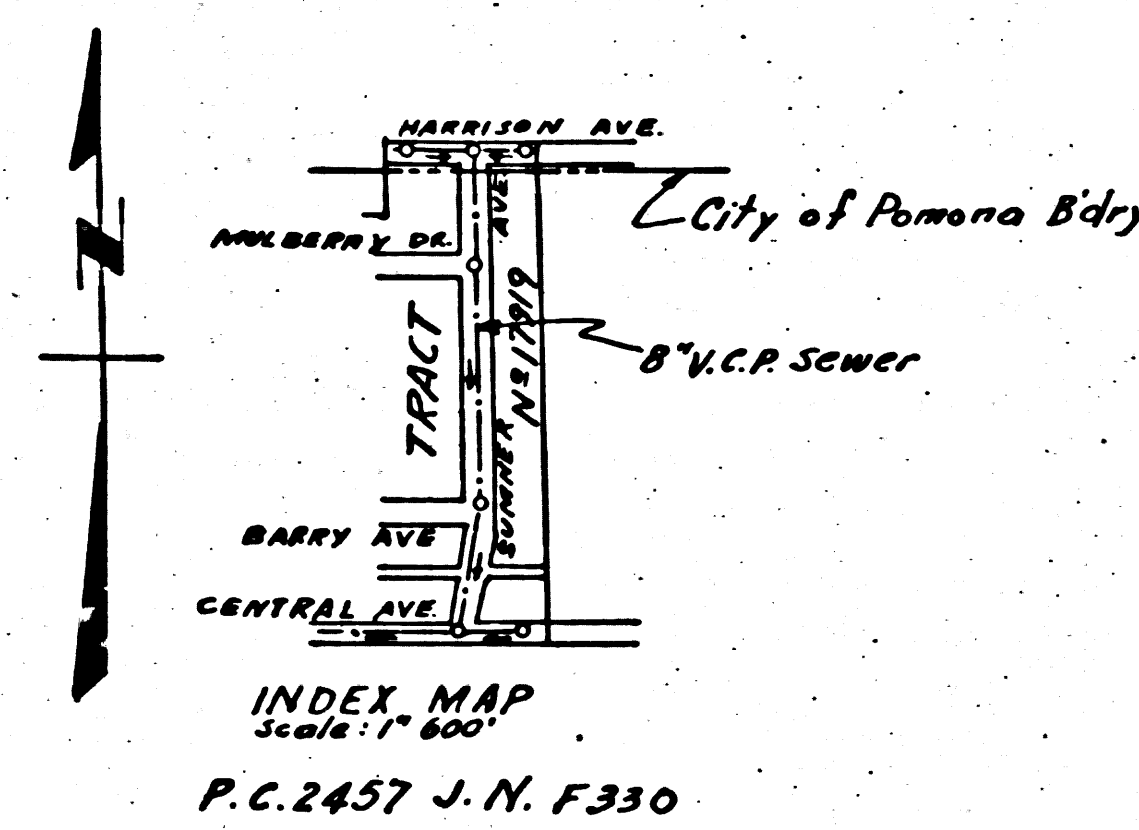
APPROVED **WILLIAM J. FOX**, COUNTY ENGINEER
BY *William J. Fox*
CHIEF DEPUTY
CHECKED BY *Richard E. Kuhn* 12-3-52
OFFICE OF COUNTY ENGINEER, R.E.C. NO. 7860

APPROVED **A.M. RAWL**
CHIEF ENGINEER, SAN. DIST. NO. 2
BY *A.M. Rawl*
DIST. OFFICE ENGINEER

2" X 4" EL. 1075.17 - CHISELED X 8" BY TOP OF R.R. RAIL SET IN CONCRETE 55' WEST OF GAREY USED AS A GUARD TO THE N.E. COR. OF POMONA BAY CO. OFFICE. ADDRESS: 2707 GAREY - PER CITY ENGINEER, CITY OF POMONA.

- NOTE:** NO REPRESENTATIVE OF THE COUNTY ENGINEER WILL SURVEY OR LAY OUT ANY PORTION OF THE WORK.
- THE OWNER OR HIS AUTHORIZED REPRESENTATIVE SHALL FURNISH THE COUNTY ENGINEER WITH GRADE SHEETS AND PROFILES FOR HOUSE CONNECTIONS AND WYE BRANCHES AND SHALL PROVIDE SPARKS FOR THEM AT THEIR PROPER LOCATIONS WITH STATIONING PLAINLY MARKED. ANY CHANGE IN LOCATION WILL BE REQUESTED IN WRITING BY THE OWNER OR HIS REPRESENTATIVE.
1. ALL REVISIONS SHALL BE MADE IN THESE PLANS WITHOUT THE APPROVAL OF THE COUNTY ENGINEER.
 2. USE STANDARD MANHOLE FRAME AND COVER 5-A-17.
 3. USE STANDARD STRENGTH PIPE EXCEPT AS NOTED.
 4. USE CEMENT MORTAR FOR ALL UNGLAZED CLAY PIPE JOINTS.
 5. RESURFACE ALL TRENCH WITHIN PAVED AREA TO MEET L.A. CO. RD. DEPT. REQUIREMENTS.
 6. EXCEED FOUR FEET OF SEWER AT POINTS OF INTERFERENCE WITH POLES PER 5-A-19.
 7. HOUSE CONNECTIONS TO BE CONSTRUCTED WITH TUBES AT THE PROPERTY LINE FIVE FEET BELOW CURB GRADE.
 8. ALL STRUCTURES SHALL BE BRICK SEWER STRUCTURES 5'-0" DIA. PROVIDE SPARKS AT THE PROPERLY LOCATED PROPERTY LINE PROVIDED AT RIGHT ANGLES TO THE SEWER LINE AT THE CENTERLINE OF EACH MANHOLE.
 9. STOPPERS TO BE INSTALLED WITH JOINT COMPOUND BY MANUFACTURER AT HIS PLANT. VERIFY SECTION 38.48.
 10. CONCRETE PAVEMENT TO BE CUT NOT LESS THAN 2" IN DEPTH WITH CONCRETE SAW - SPEC. SEC. 45.
 11. INSTALL WIRE AND TAGS. SPEC. SEC. 48.

SHEET NO.	PAGES
1	1-2



INDEX MAP
Scale: 1" = 400'
P.C. 2457 J.N. F.330

13-26-52

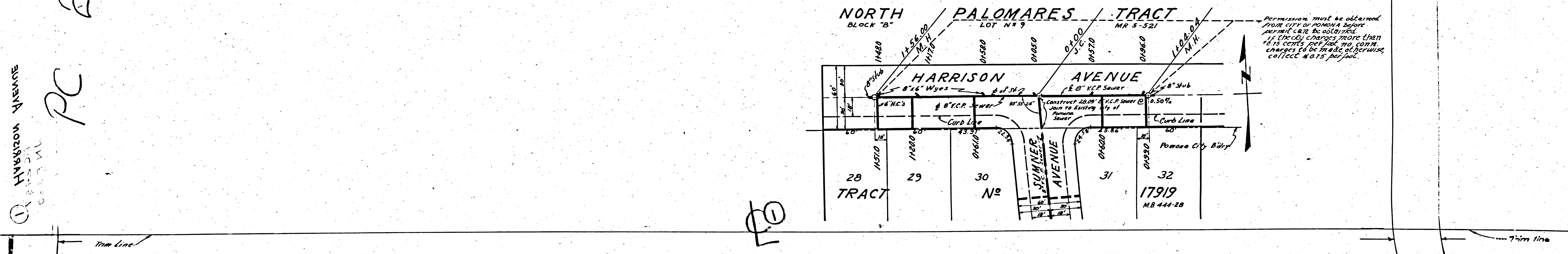
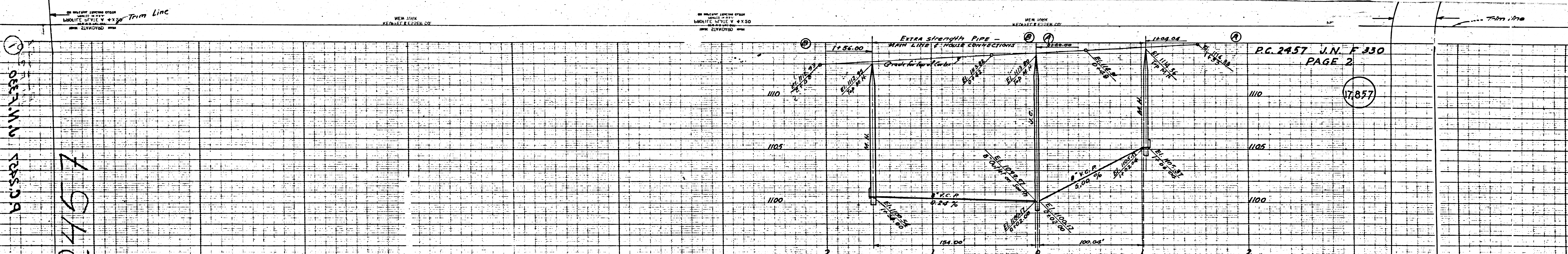
APPROVED *John R. Christian* 12-12-52
CITY ENGINEER OF POMONA

HARRISON AVENUE

B.C. 5423 N.W. F.330

105425

RECEIVED
DEC 29 1952
L.A. COUNTY ENGINEER
SANITATION DIVISION



①
 17857
 PC 2457

①
 HARRISON AVENUE
 17919
 MB 444-28
 PC

①

P.C. 2457 J.N. F 330
 PAGE 2

17857

Permission must be obtained from CITY OF POMONA before permit can be obtained. If there are charges more than \$6.75 cents per foot, no conn. charges to be made otherwise collect \$4.75 per foot.