

TEMPLE CITY

B.M. 5.6 827, T.E. 287 ELEV. 448.033
 L. & B.N. CURB 5' N. OF N. END C.R., M.W.
 Cor. LEMON AVE & BALDWIN AVE

- NOTE:** NO REPRESENTATIVE OF THE COUNTY ENGINEER WILL SURVEY OR LAY OUT ANY PORTION OF THE WORK. THE OWNER OR HIS AUTHORIZED REPRESENTATIVE SHALL FURNISH THE COUNTY ENGINEER WITH EASEMENT SHEETS AND STATIONS FOR ALL HOUSE CONNECTIONS AND Y BRANCHES AND SHALL PROVIDE STAKES FOR THEM AT THEIR PROPER LOCATIONS WITH STATIONING PLAINLY MARKED. ANY CHANGE IN LOCATION SHALL BE REQUESTED IN WRITING BY THE OWNER OR HIS REPRESENTATIVE. NO REVISIONS SHALL BE MADE IN THESE PLANS WITHOUT APPROVAL OF THE COUNTY ENGINEER.
1. USE STANDARD MANHOLE FRAMES AND COVERS, S-a-117
 2. USE STANDARD STRENGTH PIPE
 3. USE CEMENT MORTAR FOR ALL VITRIFIED CLAY PIPE JOINTS
 4. RESURFACE ALL TRENCH WITHIN PAVED AREA TO MEET L.A. COUNTY ROAD DEPT. REQUIREMENTS
 5. ENCASE FOUR FEET OF SEWER AT POINTS OF INTERFERENCE WITH POLES, S-a-119
 6. HOUSE CONNECTIONS TO BE CONSTRUCTED WITH INVERTS AT PROPERTY LINE 6 FEET BELOW CURB GRADE
 7. ALL STRUCTURES SHALL BE BRICK SEWER STRUCTURES, S-a-104
 8. PROVIDE STAKES ON THE PROPERTY LINES OR PROPERTY LINES PRODUCED AT RIGHT ANGLES TO THE SEWER LINE AT THE CENTER LINE OF EACH MANHOLE
 9. STOPPERS TO BE INSTALLED WITH JOINT COMPOUND BY MANUFACTURER AT THIS PLANT, SPEC'S SEC. 93, 48
 10. CONCRETE PAVEMENT TO BE CUT NOT LESS THAN 2" IN DEPTH WITH CONCRETE SAW, SPEC'S SEC. 65
 11. INSTALL WIRE AND TAGS, SPEC'S SEC. 48

PROFILE, ALIGNMENT AND GRADE OF
SANITARY SEWERS
 TO BE CONSTRUCTED IN
TRACT NO. 18785
EMPEROR AVE.
 BETWEEN GOLDEN WEST AVE AND A POINT 660 FT. WESTERLY
 AND IN EASEMENT 178 FT. WEST EMPEROR AVE.
PRIVATE CONTRACT NO. 2466
 W. S. 44
 SHEET 1 OF 1 SHEET
 OCTOBER 1952

PREPARED IN THE OFFICES OF
BARNETT, HOPEN & SMITH
 CIVIL ENGINEERS & SURVEYORS
 BY: *Herold A. Bennett*
 REG. C.E. No. 1216

FOR LEGEND SEE PLAN NO. 5-a-64

NOTE: GRADES TO WHICH THIS IMPROVEMENT IS TO BE CONSTRUCTED ARE SHOWN ON PLANS AND PROFILES. GRADE POINTS FOR TOP OF CURBS, CENTER LINES OF STREETS, OR CENTER LINE OF ALLEY ARE SHOWN BY CIRCLES ON PROFILES. AT ALL POINTS BETWEEN DESIGNATED POINTS THE GRADE SHALL BE ESTABLISHED SO AS TO CONFORM TO A STRAIGHT LINE BEHIND DESIGNATED POINTS. ELEVATIONS ARE IN FEET ABOVE U.S.C. & G.S. DATUM OR MEAN SEA LEVEL.

THIS DRAWING AND THE DATA HEREON ARE HEREBY MADE A PART OF THE SPECIFICATIONS. WORK SHALL BE CONSTRUCTED ACCORDING TO SPECIFICATIONS ON FILE IN THE OFFICE OF THE COUNTY ENGINEER AND SHALL BE PROSECUTED ONLY IN THE PRESENCE OF THE COUNTY ENGINEER. BEFORE WORK CAN BE STARTED THE CONTRACTOR MUST OBTAIN A PERMIT TO EXCAVATE IN COUNTY STREETS FROM THE L.A. COUNTY ROAD DEPT., 108 W. 2ND ST. AND MAKE A DEPOSIT WITH THE COUNTY ENGINEER, 733 L.A. COUNTY ENGINEERING BLDG., SUFFICIENT TO COVER THE COST OF CONSTRUCTION INSPECTION AND RECORD PLANS.

APPROVAL OF THIS PLAN BY THE COUNTY OF LOS ANGELES DOES NOT CONSTITUTE A REPRESENTATION AS TO ACCURACY OF THE LOCATION OF OR THE EXISTENCE OR NON-EXISTENCE OF ANY UNDERGROUND UTILITY, PIPE, OR STRUCTURE WITHIN THE LIMITS OF THIS PROJECT. THIS NOTE APPLIES TO ALL SHEETS.

RECEIVED
 FEB 6 1953
 L.A. COUNTY ENGINEER
 SANITARY DIVISION

RECEIVED
 MAR 28 1953
 L.A. COUNTY ENGINEER
 SANITARY DIVISION

COUNTY OF LOS ANGELES, CALIFORNIA

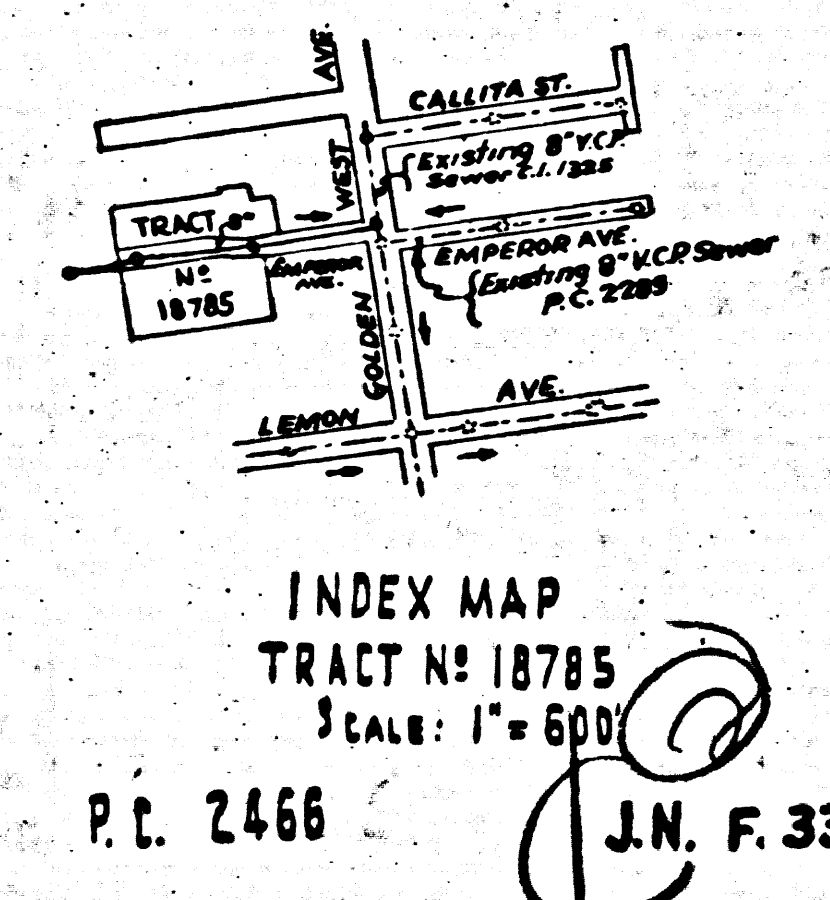
APPROVED, **WILLIAM J. FOX**
 COUNTY ENGINEER

APPROVED, **A. M. RAWN**
 CHIEF ENGR. CO. SAN. DIST. NO. 15

BY: *Joe Price*
 AST. CHIEF DEPUTY

BY: *A. M. Rawn*
 OFFICE ENGINEER

CHECKED BY: *Richard E. Kuhn* 1-30-53
 OFFICE OF COUNTY ENGINEER, REG. C.E. No. 7860



P.C. 2466
 J.N. F. 339

Checked 3-27-53 *W. Rawn*

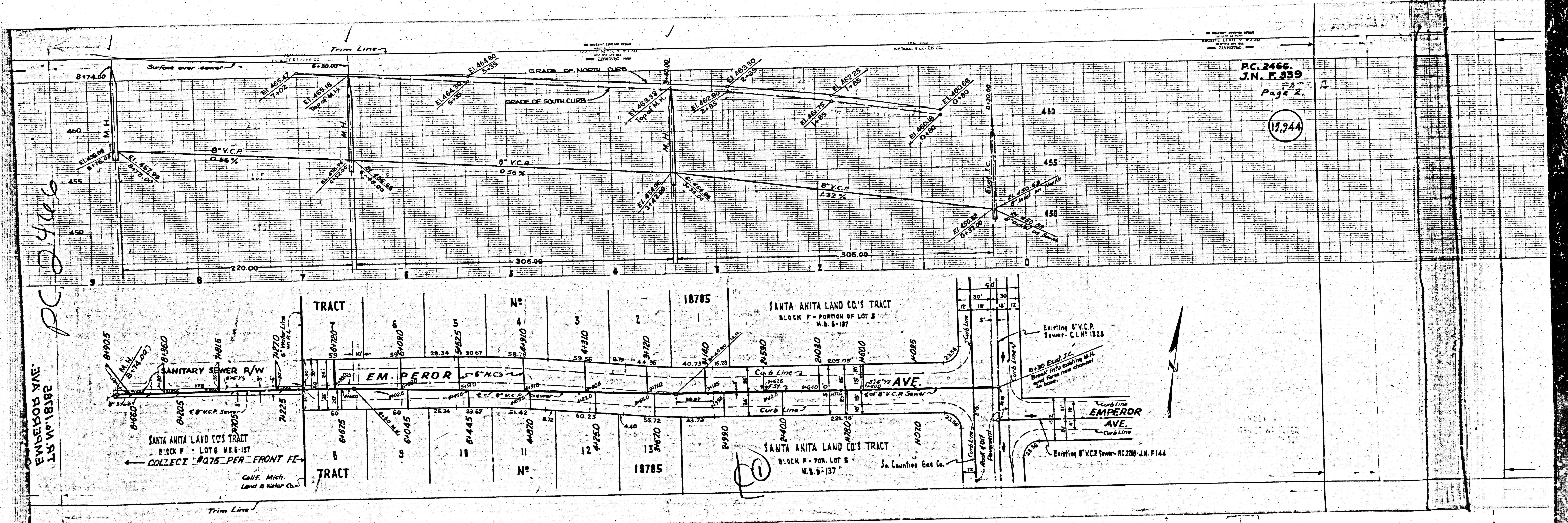
372

15,943

2881 PA. TARI
 1314 MORNING
 825322

PC 2466
J.N. F. 939
Page 2.

15,944



EMPEROR AVE.
L.S. NO. 18182

Trim Line

EMPEROR AVE.

EMPEROR AVE.

EMPEROR AVE.

EMPEROR AVE.

EMPEROR AVE.

EMPEROR AVE.

EMPEROR AVE.

EMPEROR AVE.

EMPEROR AVE.

EMPEROR AVE.

EMPEROR AVE.