

17,004

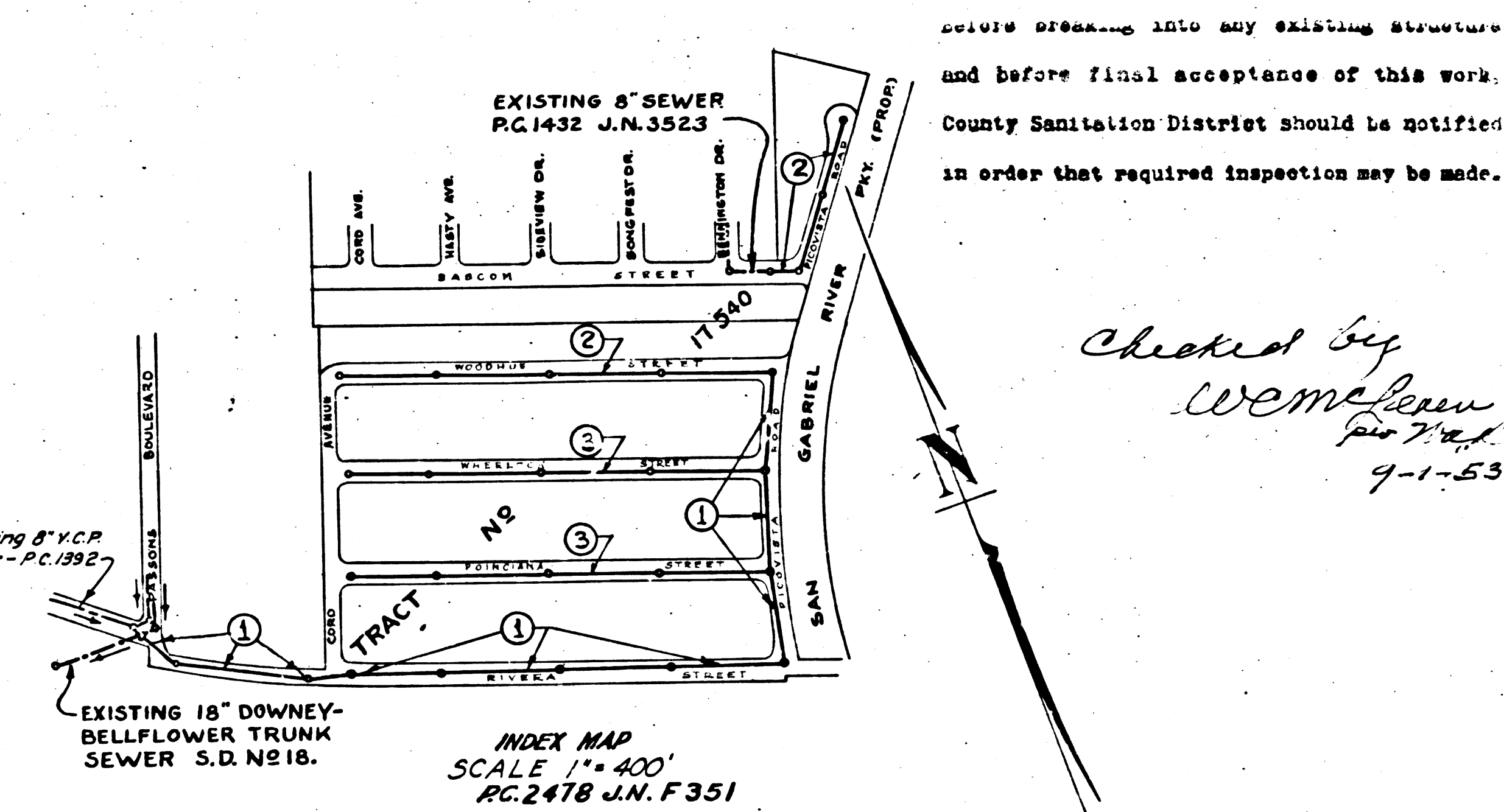
**B.M. - ELEV. 156.82 - L.A. COUNTY NO. 52**  
Spine in lead at S.E. Cor. of Large Near-Box 41' S.W. Cor.  
of Intersection of Placeros Blvd & Bermudez St.

- NOTE:**  
NO REPRESENTATIVE OF THE COUNTY ENGINEER WILL SURVEY OR LAYOUT ANY PORTION OF THE WORK.  
THE OWNER OR HIS AUTHORIZED REPRESENTATIVE SHALL FURNISH THE COUNTY ENGINEER WITH GRADE SHEETS AND STATIONS FOR ALL HOUSE CONNECTIONS AND BRANCHES, AND SHALL PROVIDE STAKES FOR THEM AT THEIR PROPER LOCATIONS WITH STATIONING PLAINLY MARKED. ANY CHANGE IN LOCATION SHALL BE REQUESTED IN WRITING BY THE OWNER OR HIS REPRESENTATIVE.  
NO REVISIONS SHALL BE MADE IN THESE PLANS WITHOUT APPROVAL OF THE COUNTY ENGR.
1. USE STANDARD MANHOLE FRAMES AND COVERS, S-4-117, EXCEPT AS NOTED.
  2. USE STANDARD STRENGTH PIPE, EXCEPT AS NOTED.
  3. USE CEMENT MORTAR FOR ALL VITRIFIED CLAY PIPE JOINTS.
  4. RESURFACE ALL TRENCH WITHIN PAVED AREA TO MEET L.A. COUNTY ROAD DEPT. REQUIREMENTS.
  5. BRIDGE FOUR FEET OF SEWER AT POINTS OF INTERFERENCE WITH POLES, S-4-119.
  6. HOUSE LATERALS TO BE CONSTRUCTED WITH INVERTS AT PROPERTY LINE 5 FEET BELOW CURB GRADE, EXCEPT AS NOTED.
  7. ALL STRUCTURES SHALL BE BRICK, SEWER STRUCTURES, S-4-106, EXCEPT AS NOTED.
  8. PROVIDE STAKES ON THE PROPERTY LINES OR PROPERTY LINES PRODUCED AT RIGHT ANGLES TO THE SEWER LINE AT THE CENTERLINE OF EACH MANHOLE.
  9. FOR ALLOWABLE LEAKAGE TEST, USE FORMULA NO. 1, SPEC. S. SEC. 51.

SHEET NO.	PAGES
1	1-4
2	5-7
3	8-9

Approval for revision  
Rivera St. H.L. Sullivan  
4/15/53

Approved relocation of T.M.H.  
Pg. 4 of L.Sullivan 6/1/53



ensure opening into any existing structure and before final acceptance of this work, County Sanitation District should be notified in order that required inspection may be made.

Checked by  
Wemler  
9-1-53

PROFILE ALIGNMENT AND GRADE OF  
**SANITARY SEWERS**  
TO BE CONSTRUCTED IN

P.C. 2478 - J.N.F351

PAGE-1

17,003

**TRACT NO.  
17540**

**PRIVATE CONTRACT NO. 2478  
W.S. 36**

SHEET 1 OF 3 SHEETS

SCALE: VERT. 1"=4'  
HOR. 1"=40' DATE, SEPT, 1952

PREPARED IN THE OFFICES OF  
**HAROLD M. TEGART**

BY: *Harold M. Tegart* 11/15/52 - Revised 4/15/53  
REG. C.E. NO. 2151

FOR LEGEND SEE PLAN NO. S-4-64

**NOTE:**  
GRADES TO WHICH THIS IMPROVEMENT IS TO BE CONSTRUCTED ARE SHOWN ON PLANS AND PROFILES. GRADE POINTS FOR TOP OF CURBS, CENTERLINE OF STREETS, OR CENTERLINE OF ALLEY ARE SHOWN BY CIRCLES ON PROFILES. AT ALL POINTS BETWEEN DESIGNATED POINTS THE GRADE SHALL BE ESTABLISHED SO AS TO CONFORM TO A STRAIGHT LINE DRAWN BETWEEN SAID DESIGNATED POINTS.  
ELEVATIONS ARE IN FEET ABOVE U.S. & S. DATUM OR MEAN SEA LEVEL.  
THIS DRAWING, AND THE DATA HEREON, ARE HEREBY MADE A PART OF THE SPECIFICATIONS. WORK SHALL BE CONSTRUCTED ACCORDING TO SPECIFICATIONS ON FILE IN THE OFFICE OF THE COUNTY ENGINEER AND SHALL BE PROSECUTED ONLY IN THE PRESENCE OF THE COUNTY ENGINEER. BEFORE WORK CAN BE STARTED THE CONTRACTOR MUST OBTAIN A PERMIT TO EXCAVATE IN COUNTY STREETS FROM THE L.A. COUNTY ROAD DEPT. 100 W. 2ND ST. L.A. AND MAKE A DEPOSIT WITH THE COUNTY ENGINEER, 739 L.A. COUNTY ENGINEERING BLDG., SUFFICIENCY TO COVER THE COST OF CONSTRUCTION INSPECTION AND RECORD PLANS.

APPROVAL OF THIS PLAN, BY THE COUNTY OF LOS ANGELES, DOES NOT CONSTITUTE A REPRESENTATION AS TO THE ACCURACY OF THE LOCATION OF, OR THE EXISTENCE OR NON-EXISTENCE OF, ANY UNDERGROUND UTILITY, PIPE, OR STRUCTURE WITHIN THE LIMITS OF THIS PROJECT.  
THIS NOTE APPLIES TO ALL SHEETS.

**COUNTY OF LOS ANGELES, CALIFORNIA.**

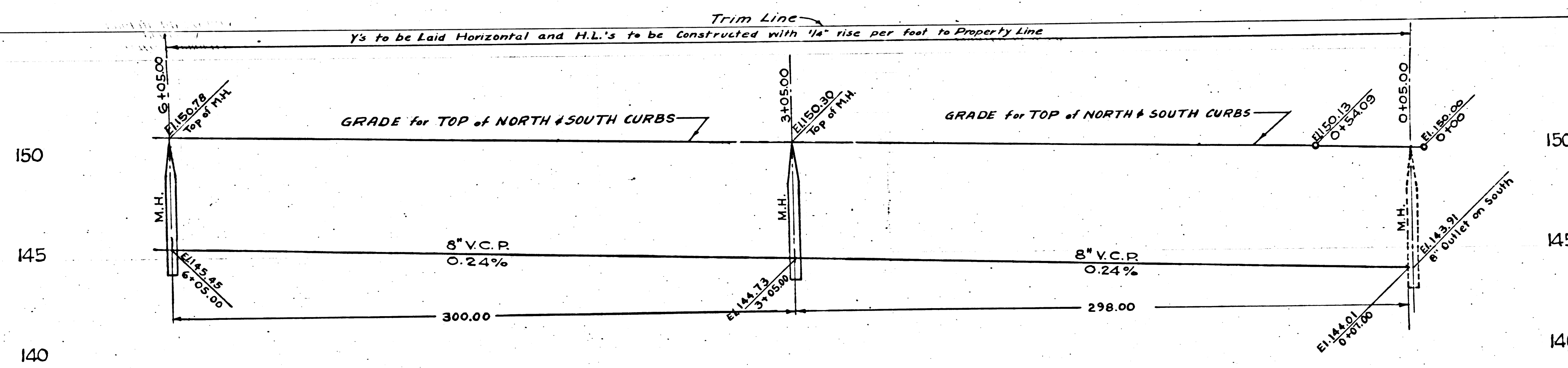
APPROVED, **WILLIAM J. FOX**, COUNTY ENGINEER, APPROVED, **A.M. DAWN**, CHIEF ENGINEER, DIST. NO. 2

BY: *W. J. Fox* CHIEF DEPUTY BY: *A. M. Dawn* OFFICE ENGINEER

CHECKED BY: *H.L. Sullivan* 4-15-53  
OFFICE OF COUNTY ENGINEER, REG. C.E. NO. 2151

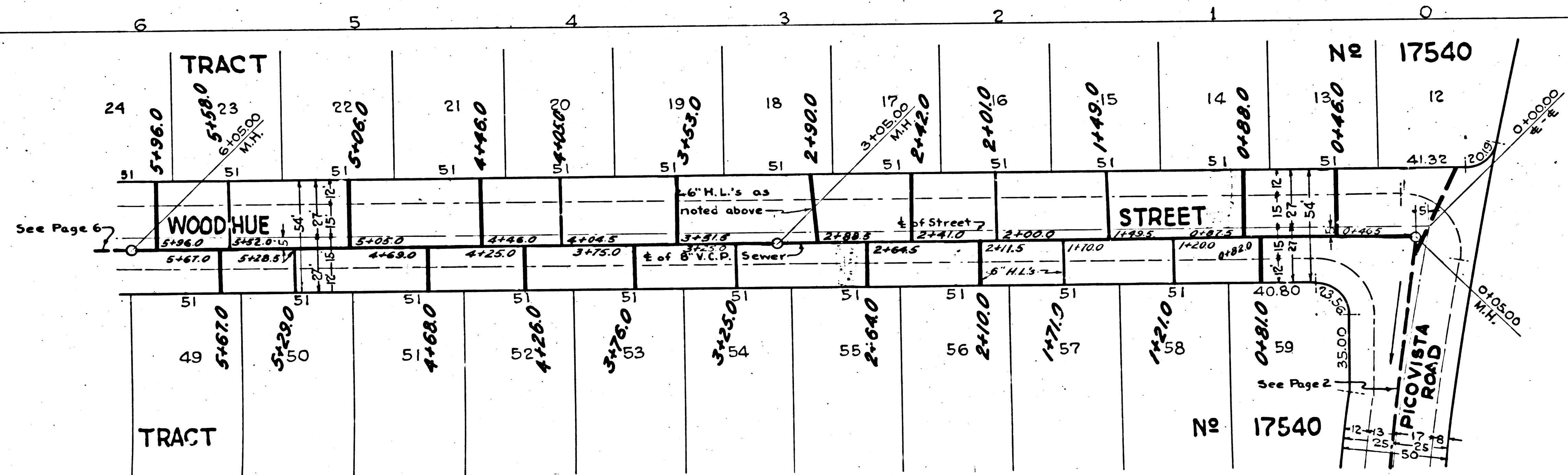
17,003  
RECEIVED  
B.C. 5418  
J.N.F351

117,008



17,007

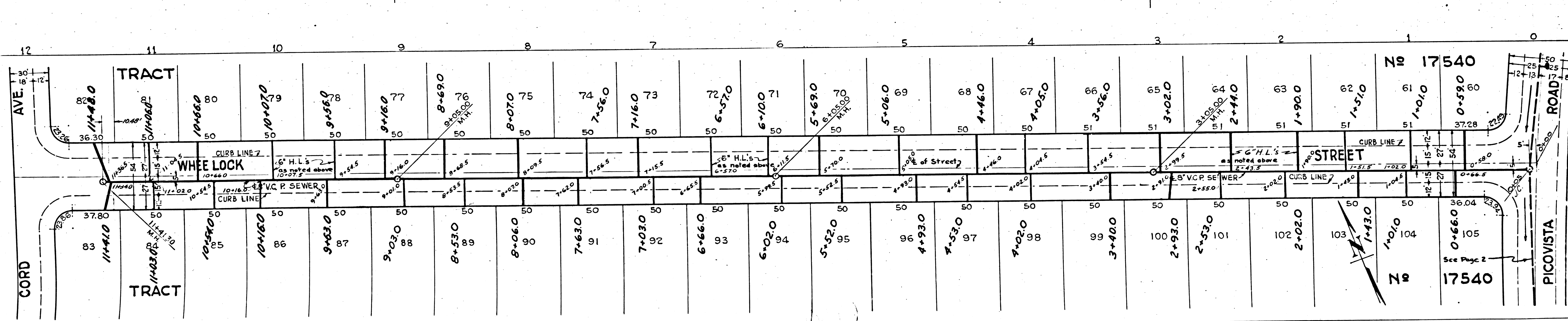
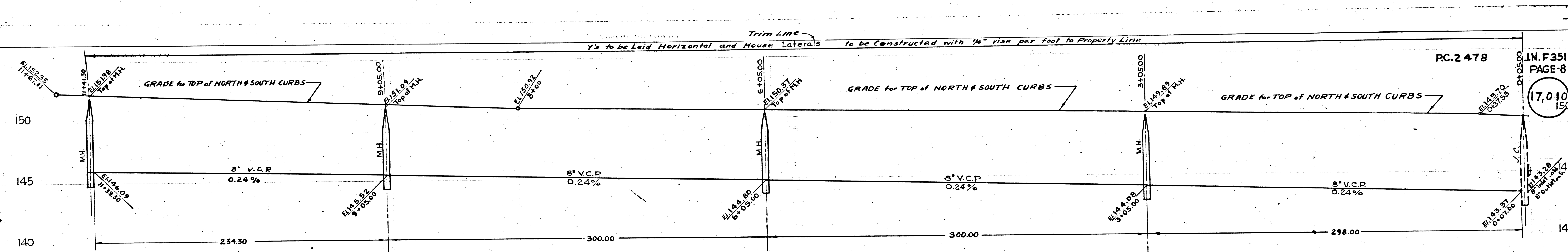
5  
FROM SHEET  
MOODHE 218EEL



REC  
BC 5418 J.N. F351

R3

5



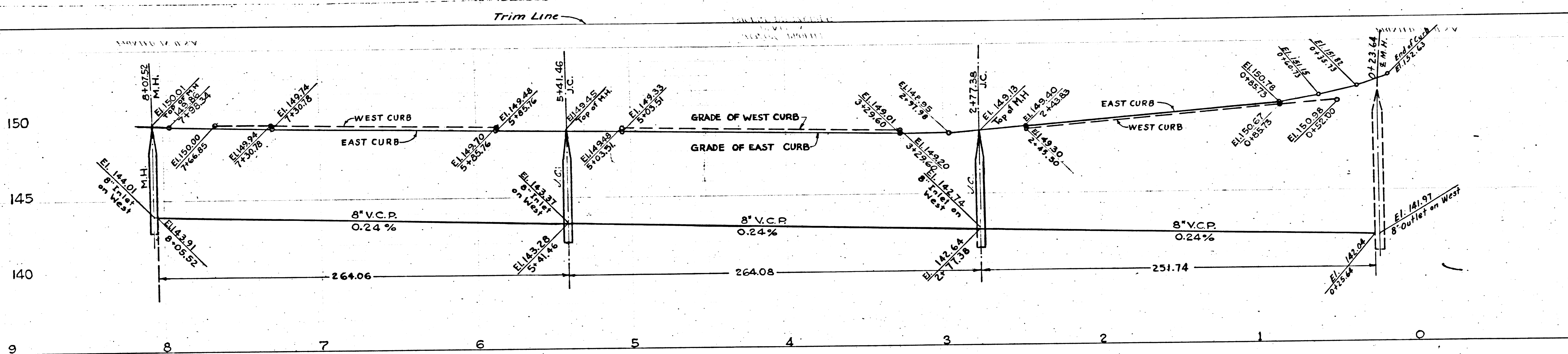
RECEIVED

PC ST 18

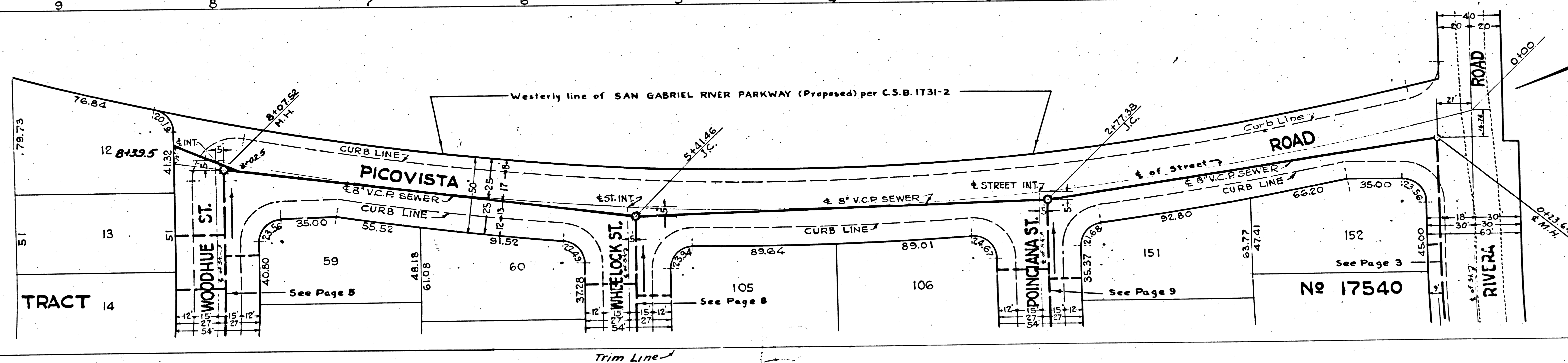
LN F351

3

(17,005)



(17,004)



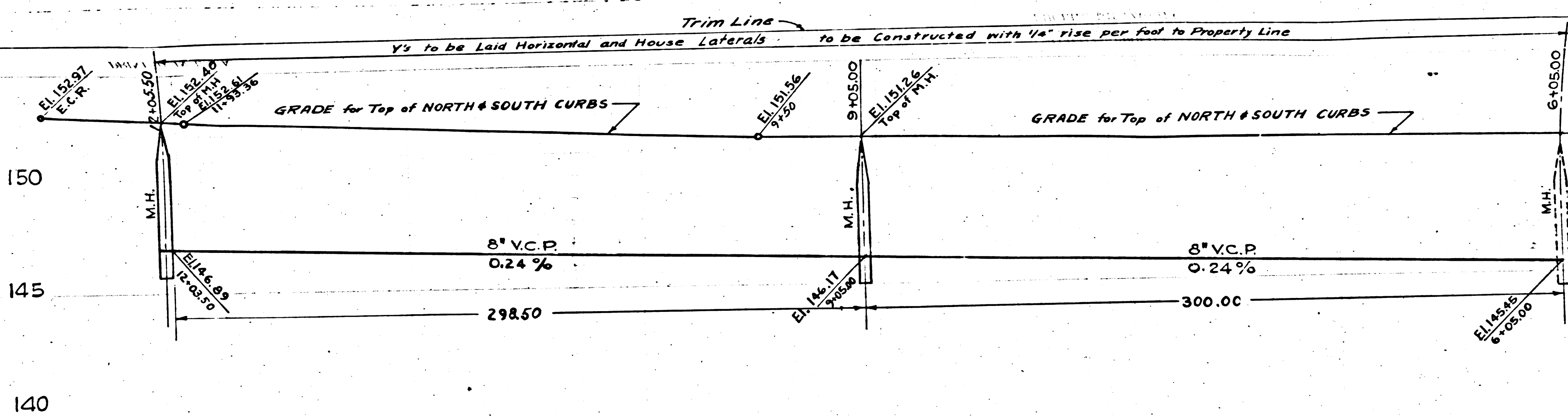
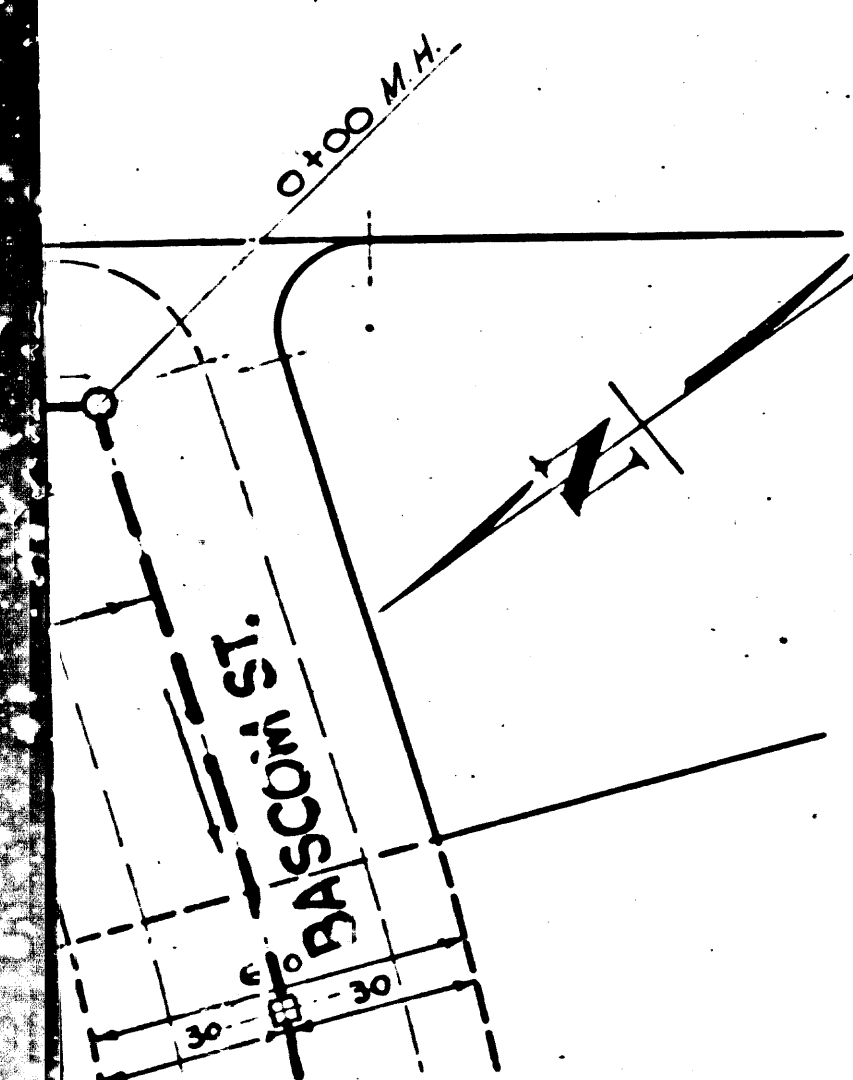
See Page 3  
No 17540

PC. 2478 J.N. F351  
PAGE-7

(17,009)

145

140



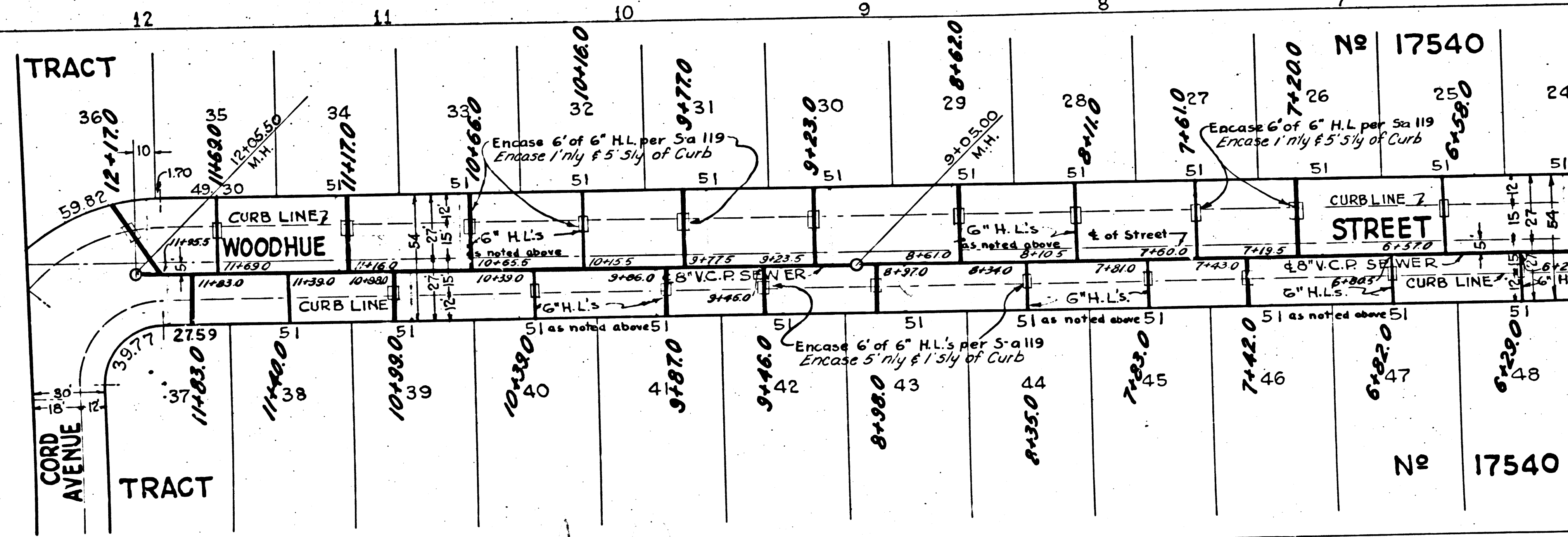
PC. 2478 J.N. F351  
PAGE-6

(17,008)

150

145

140



Trim Line

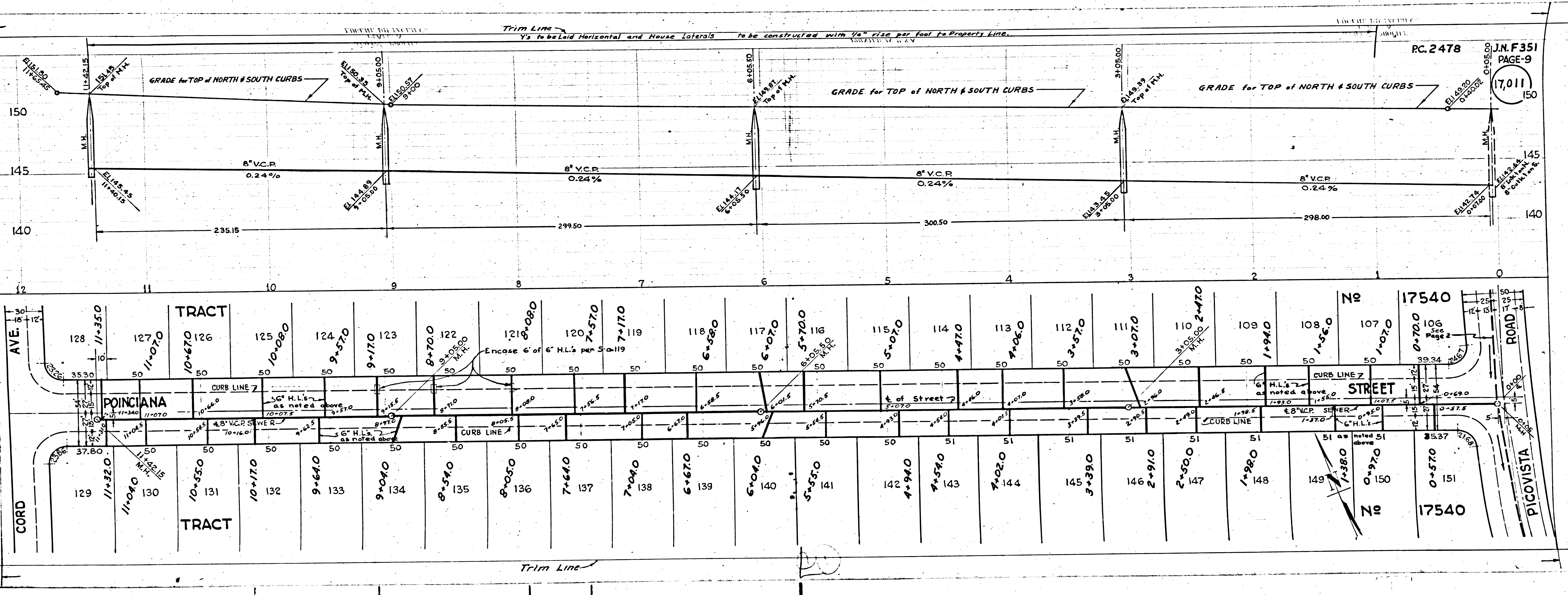
3

128' 5321

K 2 4 7605418

3

POINCIANA 218EEL  
MHEELOCK 218EEL



PC. 2478

J.N.F.351  
PAGE-9

(7,011)

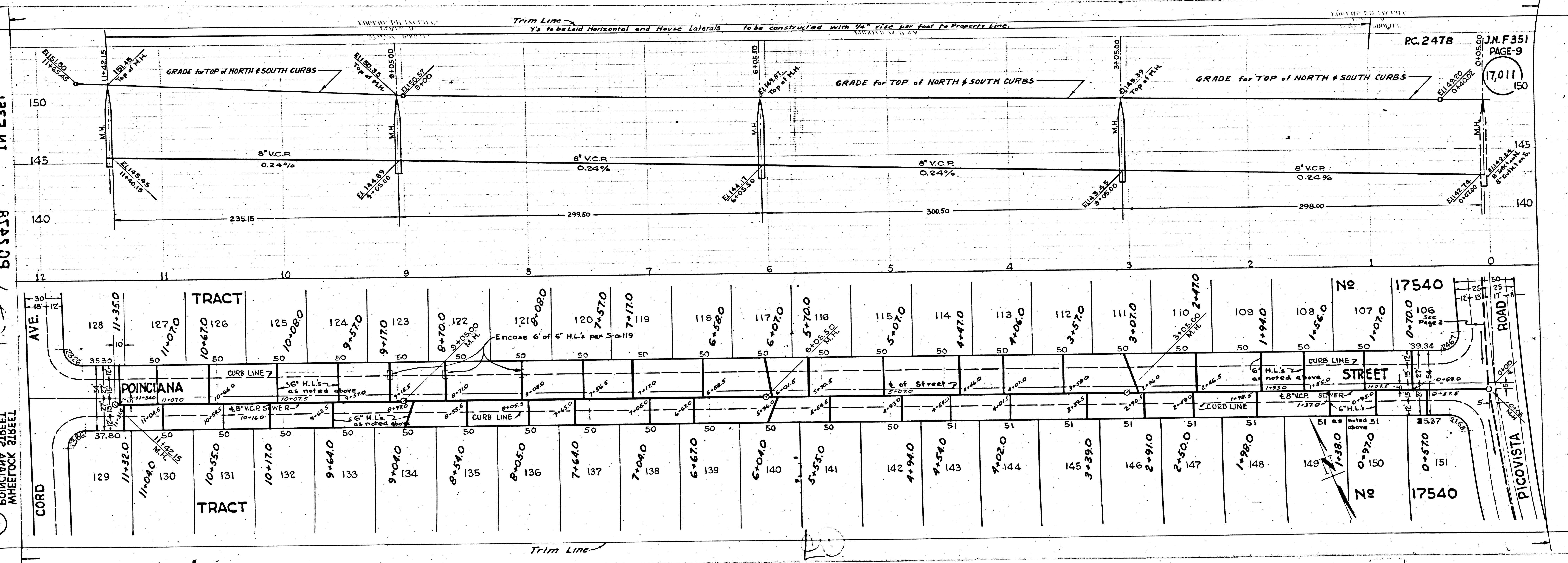
No 17540

STREET

No 17540

CORD AVE. 58'

CORD



3

127' 5 3/4

60' 5 1/4

3

POINCIANA TRACT SHEET SHEET SHEET

CORD AVE. 58

CORD

No 17540

No 17540

STREET

CORD AVE. 58

POINCIANA TRACT

CORD

CORD

CORD

CORD

CORD

CORD

CORD

CORD

CORD

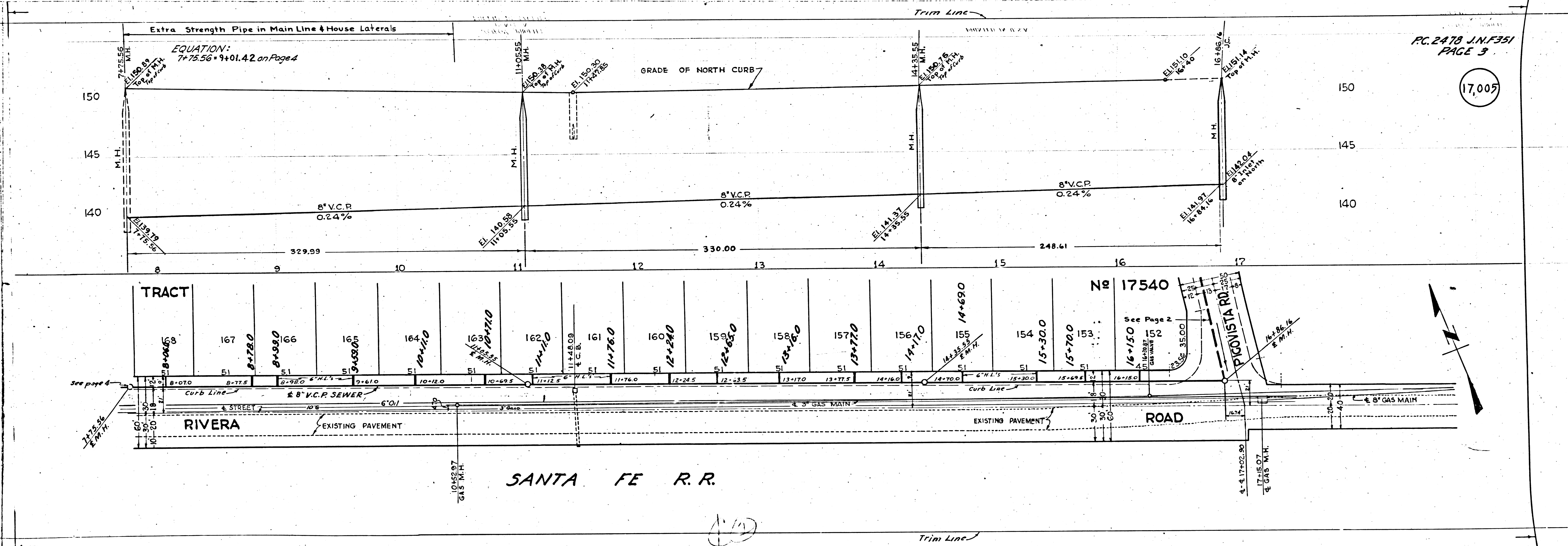
PC 2478 J.N.F.351  
PAGE 4

Equation:  
 $94.01AL = 7+73.36$   
on page 3

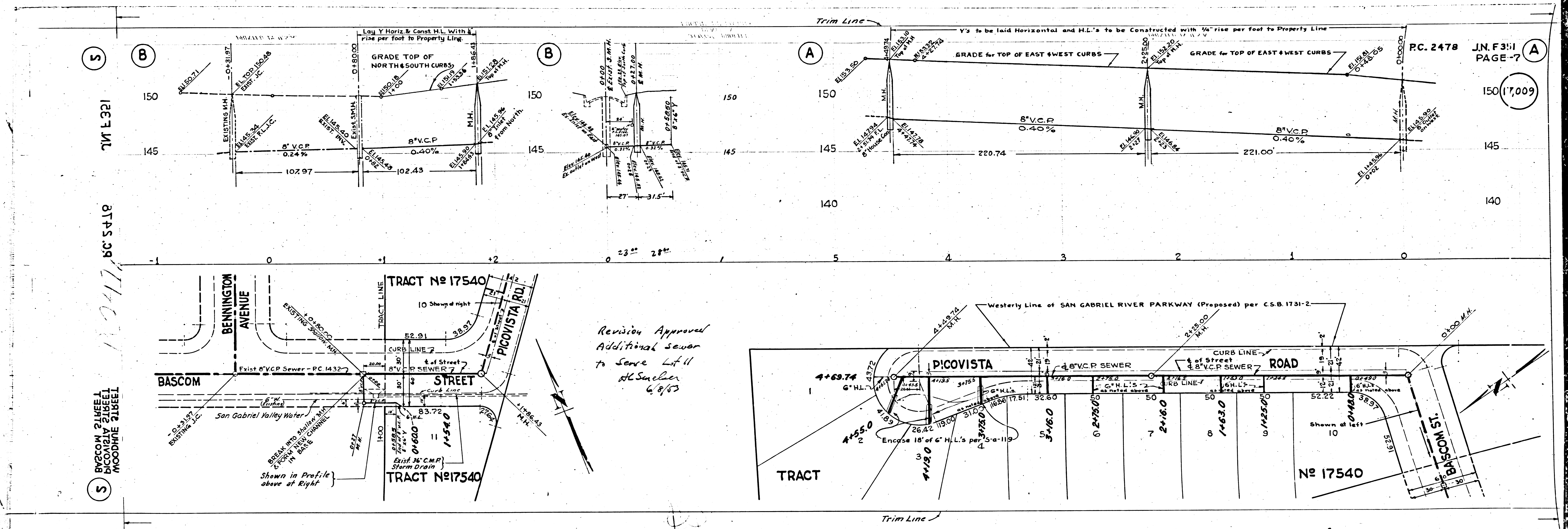
(17,006)

PC 2478 J.N.F.351  
PAGE 3

(17,005)



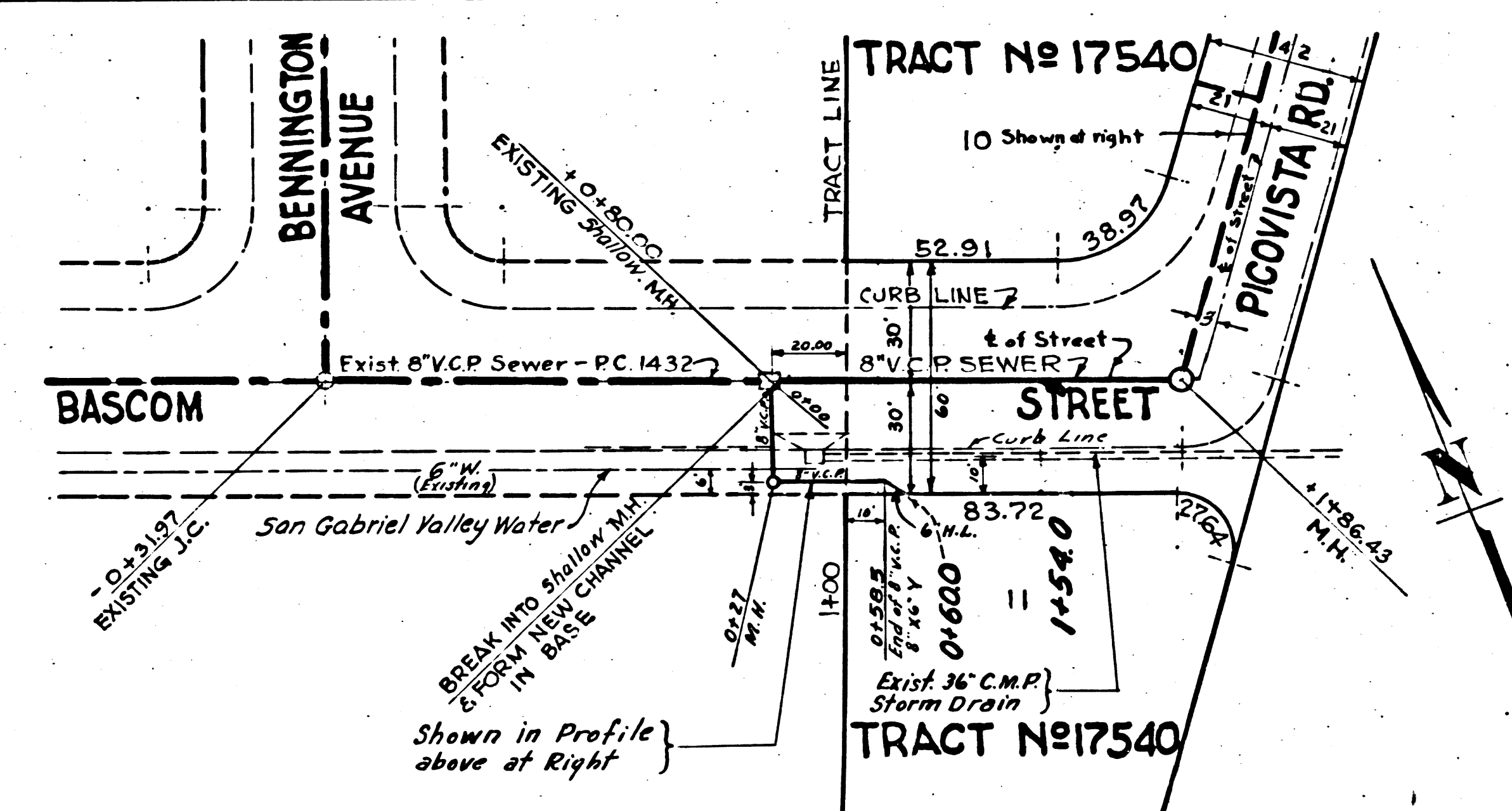




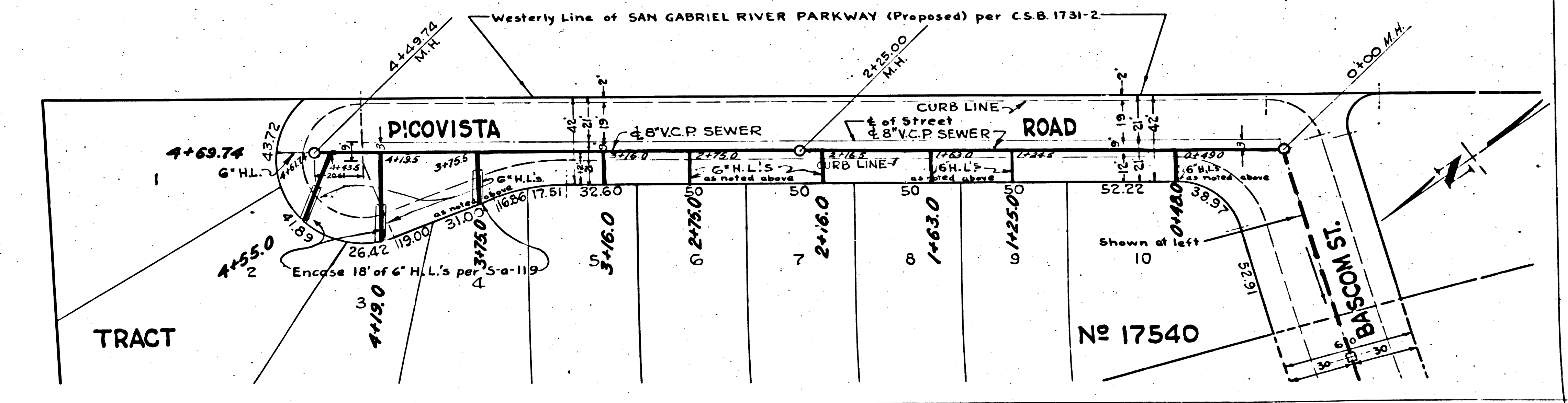
PC. 2478 J.N.F.3:11 PAGE-7

(17009)

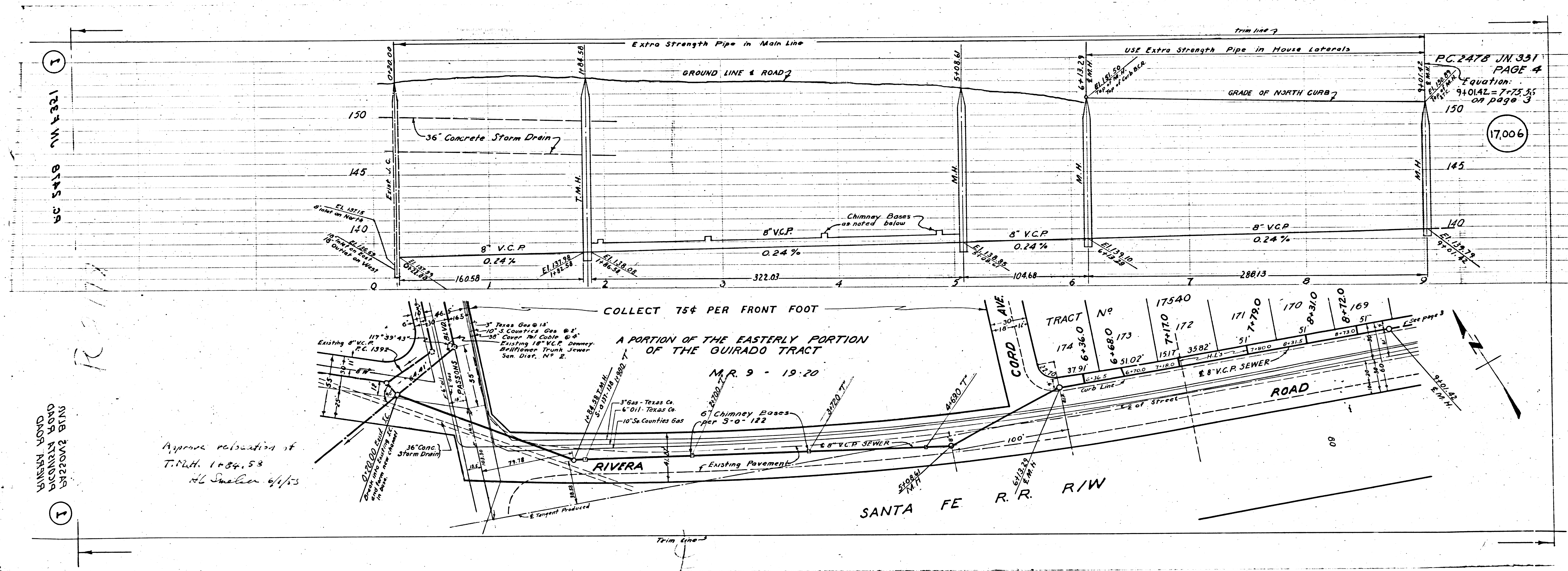
S BASCOM STREET  
 DICOAGLA STREET  
 MOODHIE STREET  
 17047  
 8745 28'



Revision Approved  
 Additional sewer  
 to serve Lot 11  
 H. Sauber  
 6/8/53



Trim Line



PC 2478 JN 331  
PAGE 4  
Equation:  
94014Z = 7.75.55  
on page 3

17,006

COLLECT 75¢ PER FRONT FOOT

A PORTION OF THE EASTERLY PORTION  
OF THE GUIRADO TRACT

M.R. 9 - 19.20

RIVERA

SANTA FE R.R. R/W

NUB 240228  
 QADR 474004  
 QADR 474004  
 QADR 474004

Approved relocation of  
T.M.H. 1+84.53  
H.L. Swales 4/1/53