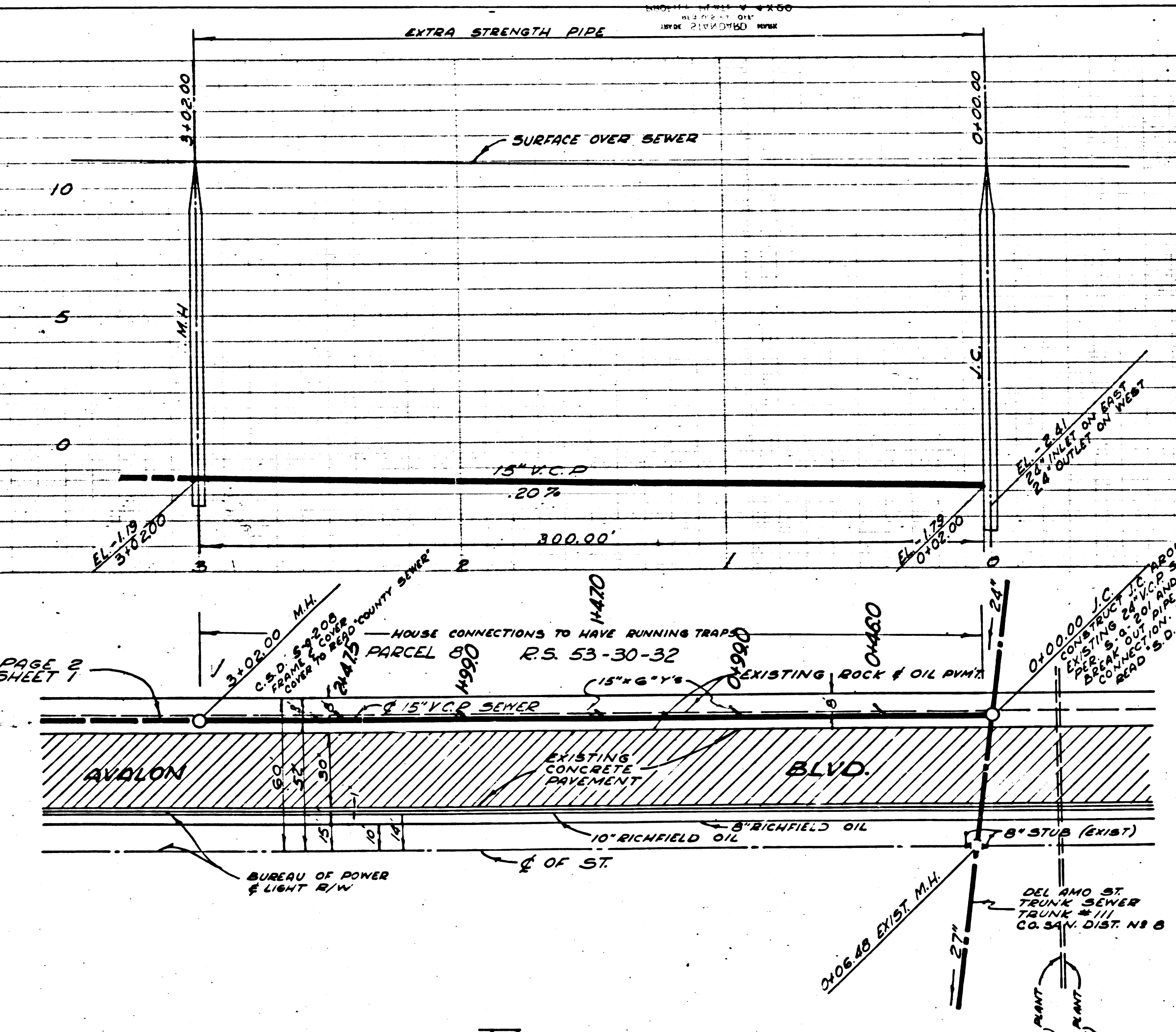
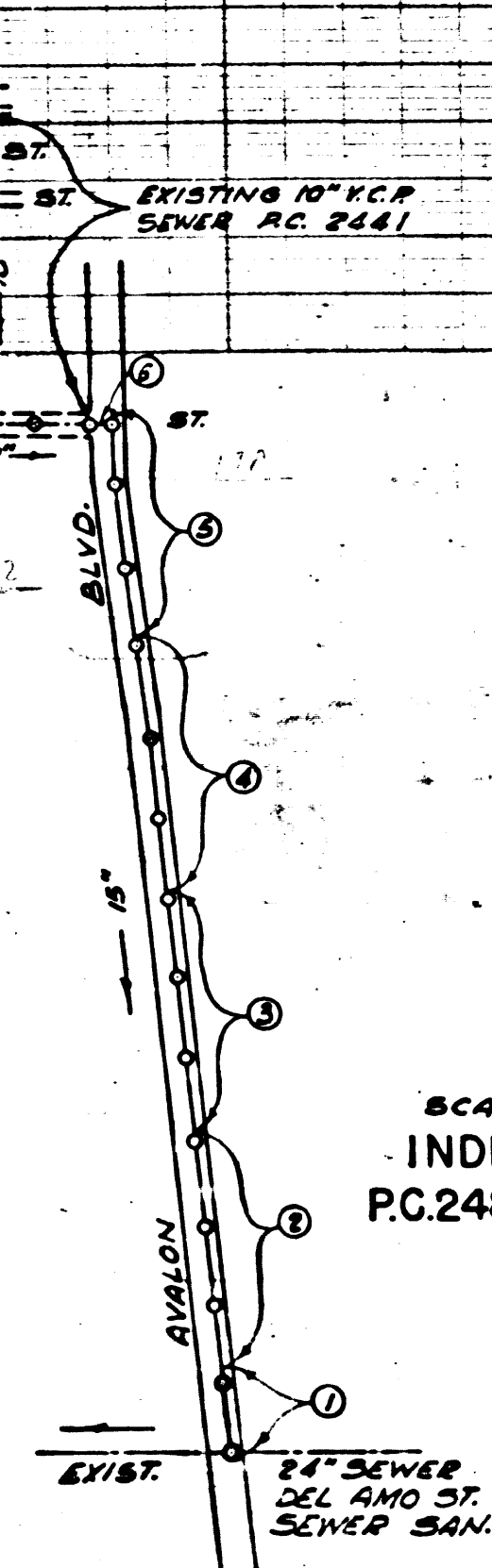


LENNOX TRIM LINE



BM 105 Y. - MET WATER DIST. 20455 CAL. NEAR SURFACE - 62 W/E AVALON BLVD. 36 N/E VICTORIA ST. ELEV. 46.108

| SHEET NO. | PAGES |
|-----------|-------|
| 1 | 1-5 |
| 2 | 6-11 |



Before breaking into any existing structure and before final acceptance of this work, County Sanitation District should be notified in order that required inspection may be made.

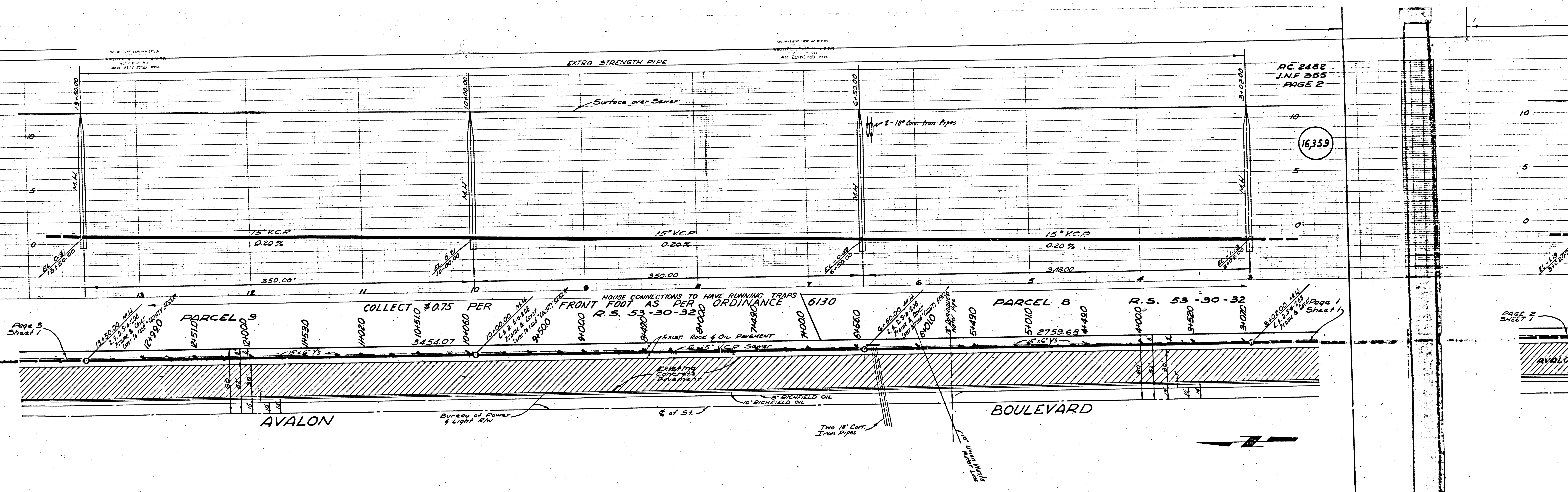
PC 2482
J.N. F 355
Page 1
TRACT NO. 14563
and
AVALON BOULEVARD
16,358
2482
26
JANUARY 1953
Edward N. Frisius
EDWARD N. FRISIUS R.E. 6563

COUNTY OF LOS ANGELES CALIFORNIA
APPROVED, WILLIAM J. FOX, COUNTY ENGINEER
BY *William J. Fox*
CHIEF DEPUTY
APPROVED, A.M. RAWN, CHIEF ENG. CO. SAN. DIST. NO. 8
BY *A.M. Rawn*
JOSEPH ENGINEER
2-3-53
CHECKED BY *Richard E. Kuhn*
OFFICE OF COUNTY ENGINEER, REG. C.E. NO. 7860

Checked 5-21-53 *M. Kern*

U.G. OK.
1-13-53
R.S.

RECEIVED
FEB 20 1953
A. COUNTY ENGINEER
SANITATION DIST. NO. 8
SC 5405 (1-1-53)
1
AVALON BLVD
201 N.E.B.



AC 2482
J.N.F 355
PAGE 2

16,359

Page 3
Sheet 1

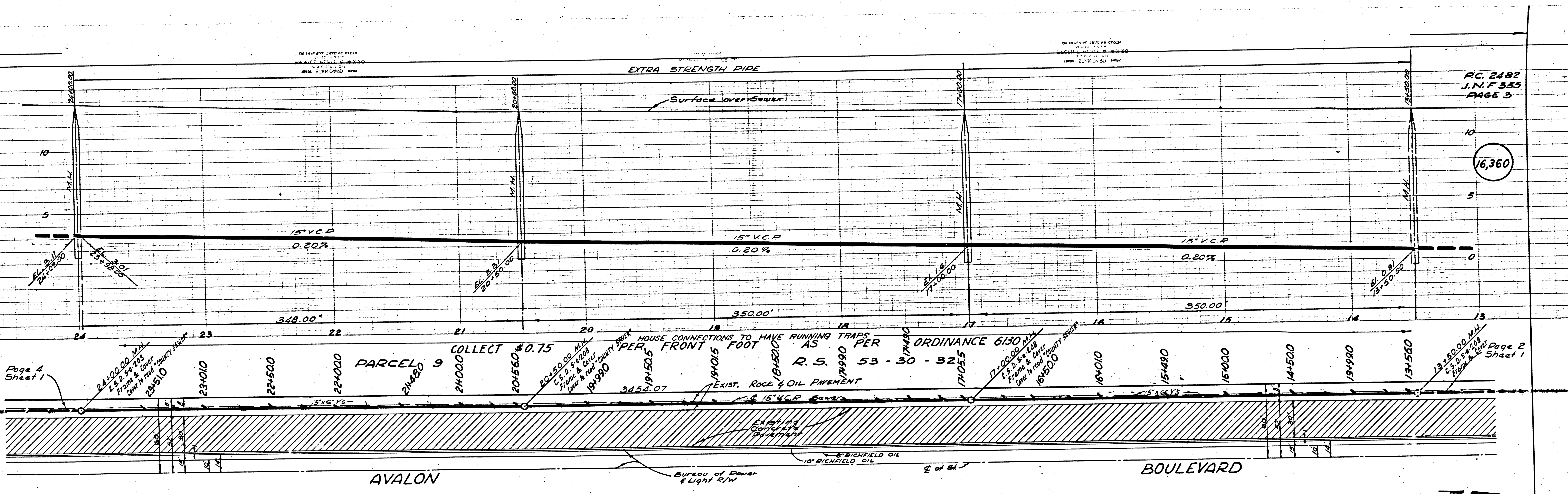
Page 9
Sheet 9

Collect \$0.75 per front foot as per ordinance (in all)

2482
355
SE 4

16,361

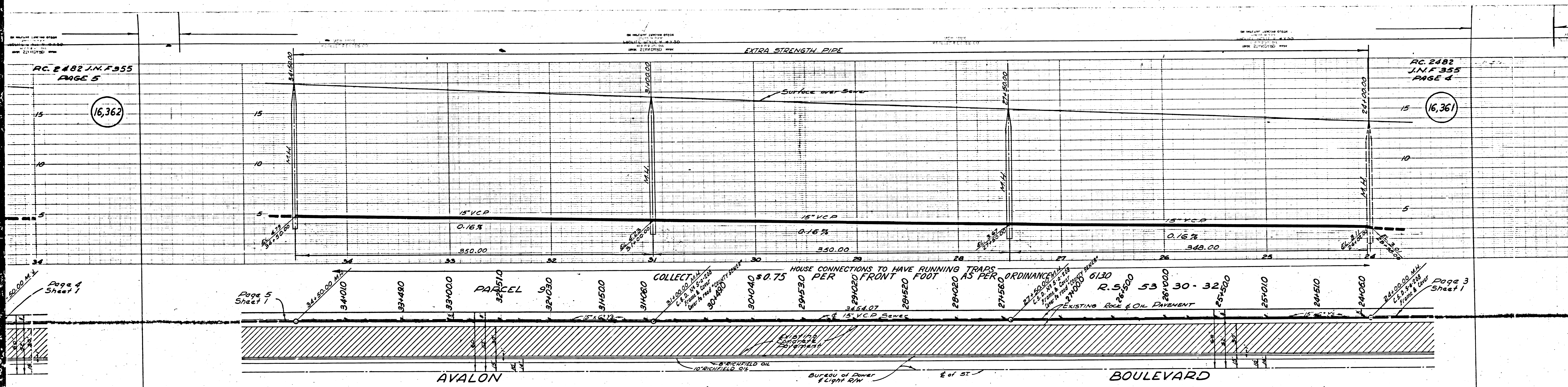
Page 3
Sheet 1



RC 2182
J.N.F.363
PAGE 3

16,360

Page 2
Sheet 1



RC 2482 J.N.F.355
PAGE 5

16,362

RC 2482
J.N.F.355
PAGE 4

16,361

Page 4
Sheet 1

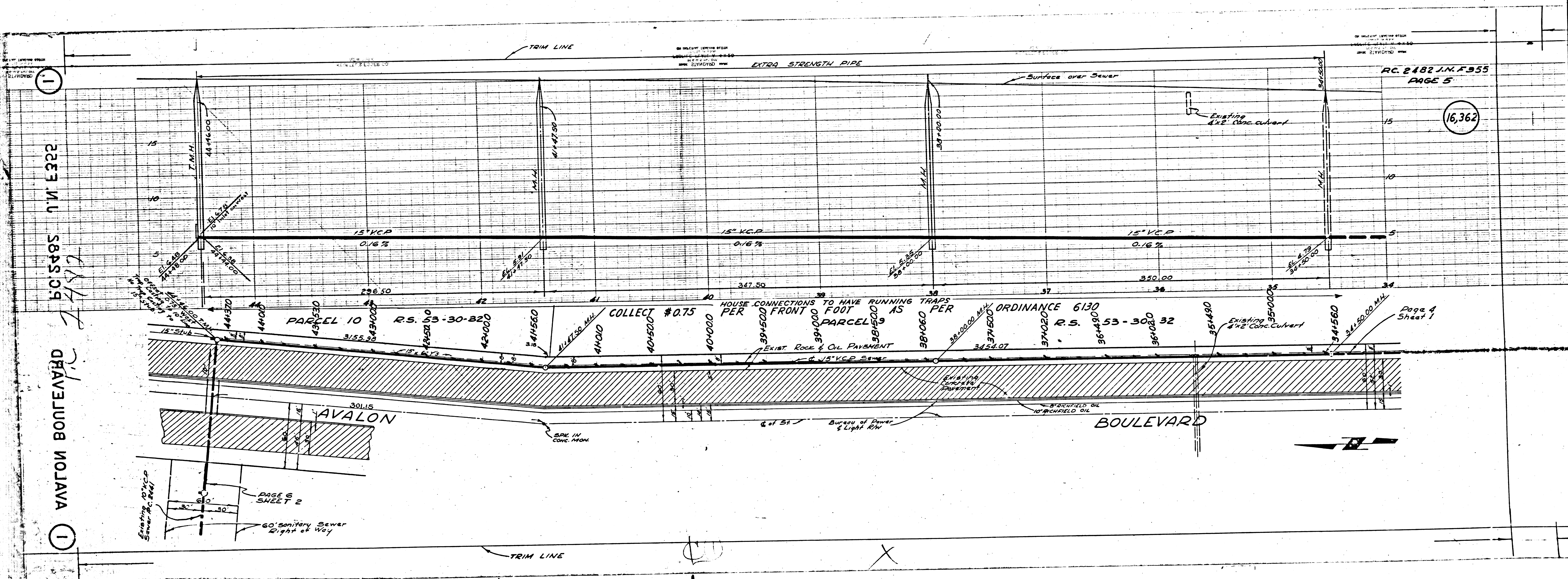
Page 5
Sheet 1

Page 3
Sheet 1

AVALON

BOULEVARD

(2) X



50' 5485 J.M.F. 5322

BOULEVARD

RC 2182 J.M.F. 555
PAGE 5

16,362

PAGE 6
SHEET 2

60' Sanitary Sewer
Right of Way

Page 4
Sheet 1

TRIM LINE

TRIM LINE

EXTRA STRENGTH PIPE

SURFACE OVER SEWER

Existing 48" Conc. Culvert

Existing 48" Conc. Culvert

COLLECT #0.75

HOUSE CONNECTIONS TO HAVE RUNNING TRAPS PER FOOT AS PER PARCEL 9

ORDINANCE 6130

Existing 48" Conc. Culvert

BOULEVARD

AVALON

Existing 10" VCP
Sewer, R.C. Box

SPK IN CONC. MON.

6" of 5" Buried of Pipe & Light 6"

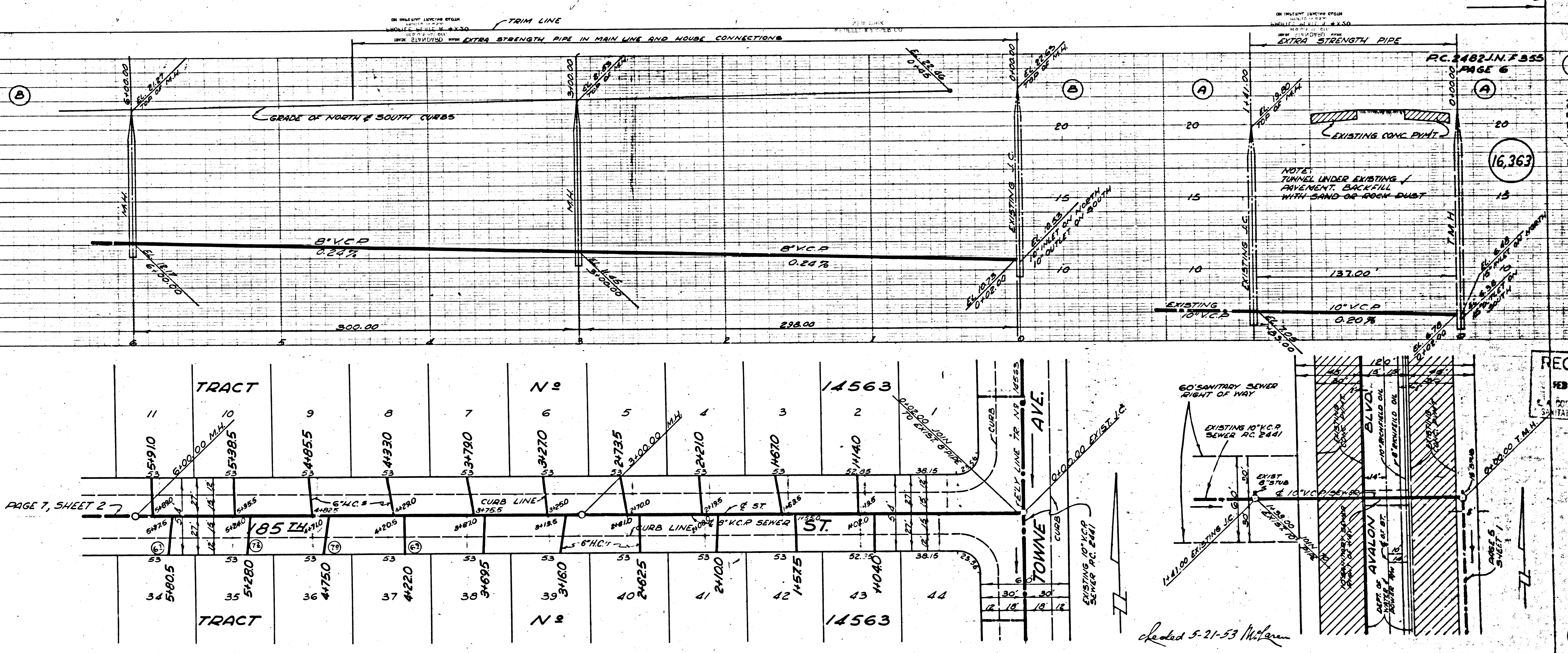
EXIST. CONC. CURB

EXIST. CONC. CURB



JNF 355
667

16,364



RECEIVED
 FEB 18 1953
 COUNTY ENGINEER
 SANITATION DIVISION

16,363
 JNF 355
 PAGE 6

Dated 5-21-53
 W. J. McNamee

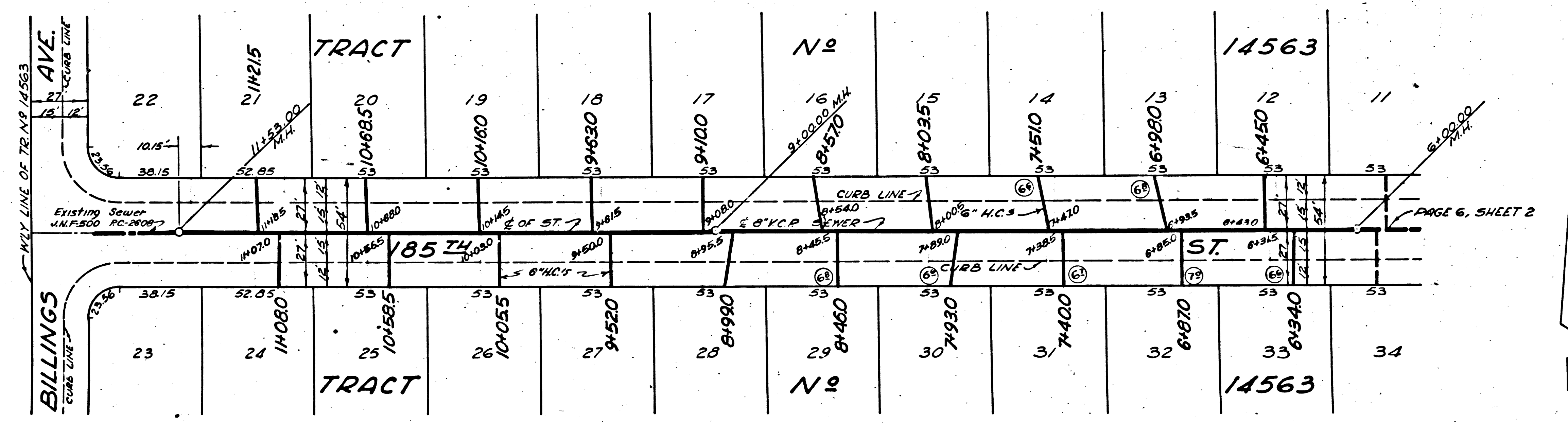
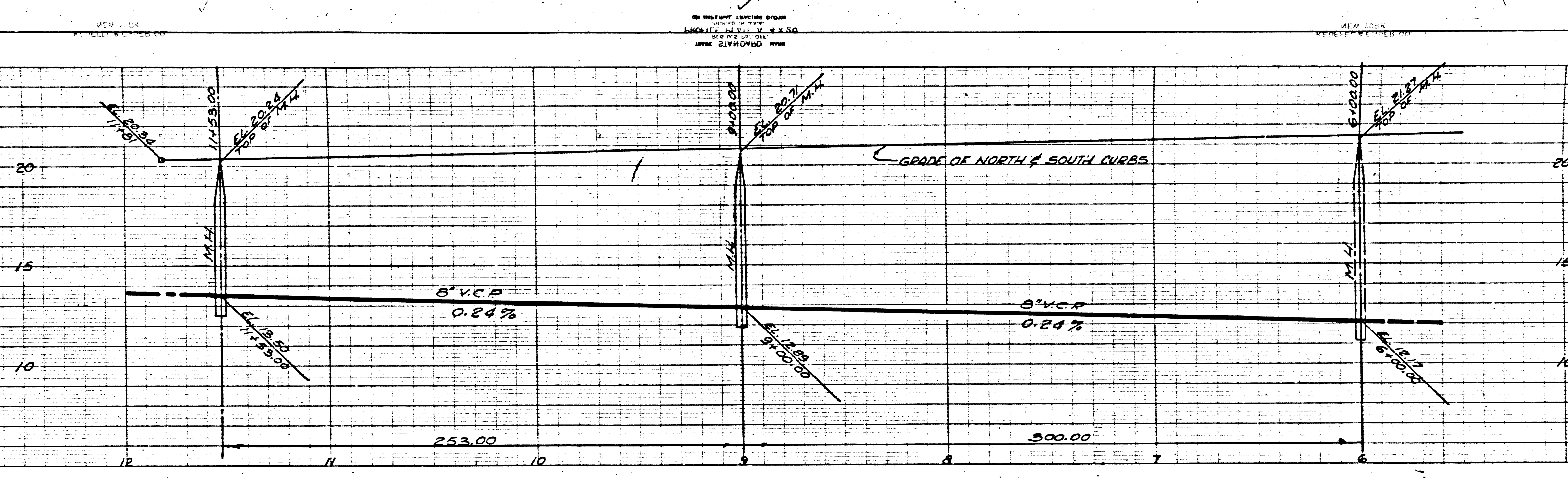
UG O.K.
 1-13-53
 R.S.

JNF 355

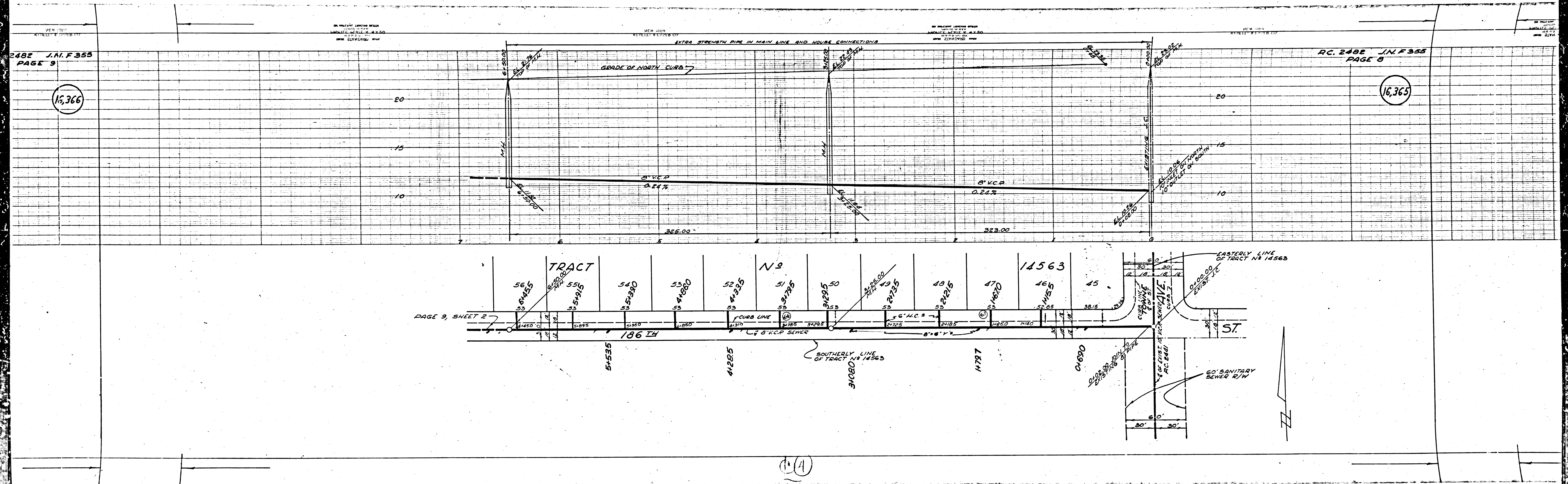
16,365

P.C. 2482 JNF 355
PAGE 7

16,364



15



2482 J.N.F.355
PAGE 9

RC. 2482 J.N.F.355
PAGE 8

16,366

16,365

PAGE 9, SHEET 2

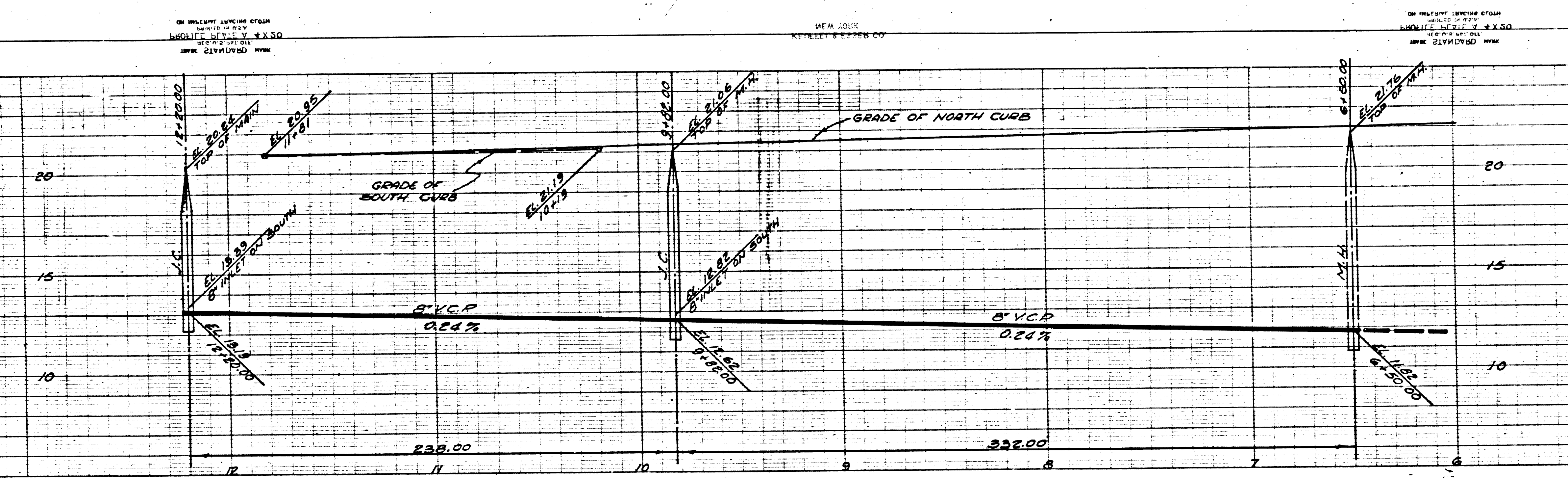
(1)

P.C. 2482 J.N.F.355
PAGE 10

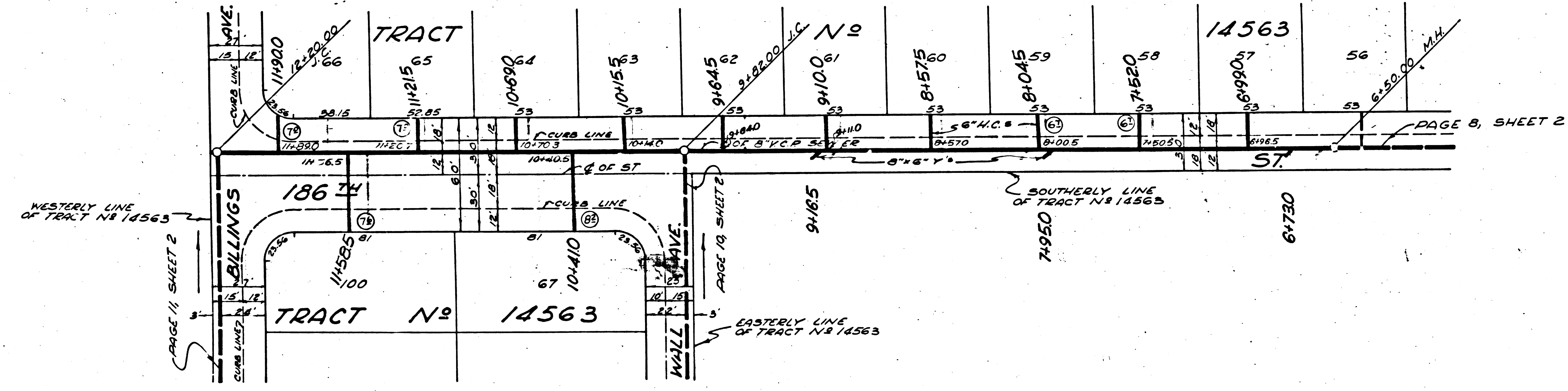
15,367

P.C. 2482 J.N.F.355
PAGE 9

16,366



SOUTHERLY LINE OF TRACT N° 14563



D3

16,368

16,367

