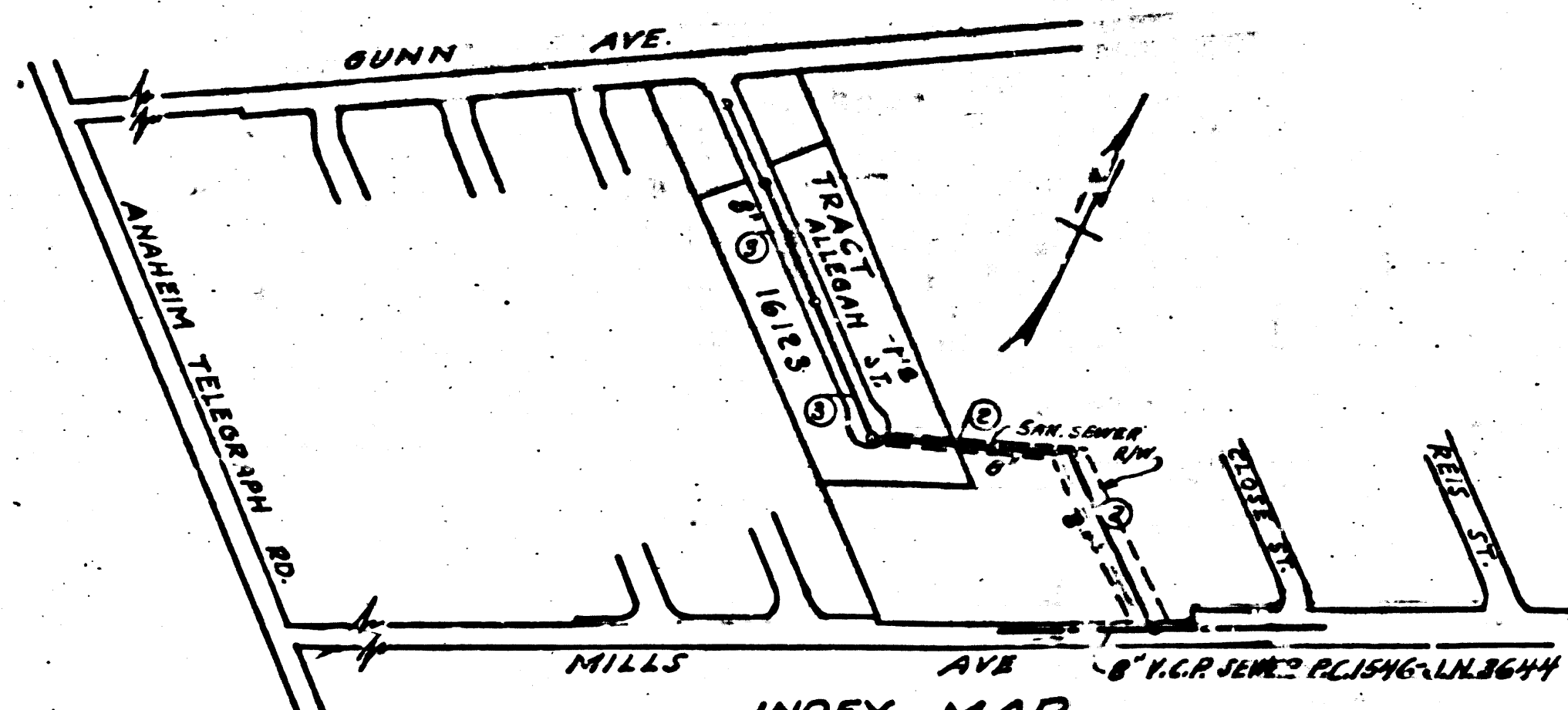


WHITTIER

B.M. - SY 1287 - Elev. 113.50  
1/4 T 2 SOUTH OF CURB  
RETURN AT S.E. CORNER  
MILLS AVE & ANOLA AVE.



INDEX MAP  
TRACT NO. 16123  
Scale 1" = 400'  
P.C. 2486 J.N. F359

USE STANDARD STRENGTH PIPE EXCEPT AS NOTED
USE CEMENT MORTAR FOR ALL VITRIFIED CLAY PIPE JOINTS
ENGASE FOUR FEET OF SEWER AT POINTS OF INTERFERENCE WITH POLES AS PER S. & H. 112
CONSTRUCT HOUSE CONNECTIONS WITH INVERT AT POOL LINE 8 FEET BELOW CURB GRADE EXCEPT AS NOTED
ALL STRUCTURES SHALL BE BRICK SOWER STRUCTURES AS PER PLAN NO. S-6-104 EXCEPT AS NOTED
USE STANDARD MANHOLE FRAMES AND COVERS AS PER PLAN NO. S-6-112 EXCEPT AS NOTED
CONSTRUCT TOPS OF ALL STRUCTURES IN RIGHTS OF WAY 6" ABOVE FINISHED GRADE
RESURFACE ALL TRENCHES WITHIN PAVED AREA TO MEET LOS ANGELES COUNTY ROAD DEPT. OR STATE HIGHWAY REQUIREMENTS IN ACCORDANCE WITH PERMIT
PROVIDE STAKES ON THE PROPERTY LINES OR PROPERTY LINES PRODUCED, AT RIGHT ANGLES TO THE SEWER LINE AT THE CENTER LINE OF EACH MANHOLE
NO REVISIONS SHALL BE MADE IN THESE PLANS WITHOUT APPROVAL OF THE COUNTY ENGINEER
NO REPRESENTATIVE OF THE COUNTY ENGINEER WILL SURVEY OR LAY OUT ANY PORTION OF THE WORK
THE OWNER OR HIS AUTHORIZED REPRESENTATIVE SHALL FURNISH THE COUNTY ENGINEER WITH GRADE SHEETS AND STATIONS OF ALL HOUSE CONNECTIONS AND Y BRANCHES, AND SHALL PROVIDE STAKES FOR THEM AT THEIR PROPER LOCATIONS WITH STATIONING PLAINLY MARKED
ANY CHANGE OF LOCATION SHALL BE REQUESTED IN WRITING BY THE OWNER OR HIS REPRESENTATIVE

STOPPERS TO BE INSTALLED WITH JOINT COMPOUND BY MANUFACTURER AT HIS PLANT. SPECIFICATIONS - SECTION 33.48  
CONCRETE PAVEMENT TO BE CUT NOT LESS THAN 2 INCHES IN DEPTH WITH CONCRETE SAW. SPECIFICATIONS - SECTION 65.  
INSTALL WIRE & TAGS ON ALL CONNECTIONS & WYES PER SPECS SEC. 48

APPROVAL OF THIS PLAN BY THE COUNTY OF LOS ANGELES DOES NOT CONSTITUTE A REPRESENTATION AS TO THE ACCURACY OF THE LOCATION OF, OR THE EXISTENCE OR NON-EXISTENCE OF, ANY UNDERGROUND UTILITY, PIPE OR STRUCTURE WITHIN THE LIMITS OF THIS PROJECT.  
(THIS NOTE APPLIES TO ALL SHEETS)

SHEET NO	PAGES
1	1-3

Revision Approved *P. Miller* 3-11-53  
Office of County Engineer - Reg. C.E. 7860

checked *A. J. 3/11/53* *W. Lane*

P.C. 2486 - J.N. F359  
Page 1.

PROFILE ALIGNMENT AND GRADE OF  
**SANITARY SEWERS**  
TO BE CONSTRUCTED IN  
TRACT NO. 16123  
**ALLEGAN STREET**  
BETWEEN GUNN AVE & A POINT 874.71' SOUTHEASTERLY  
**STORM DRAIN & SEWER EASEMENT**  
BETWEEN ALLEGAN ST & MILLS AVE

PRIVATE CONTRACT NO. 2486  
W. S. 34

SHEET 1 OF 1 SHEETS  
NOVEMBER 1952

PREPARED IN THE OFFICES OF  
**KEMMERER ENG. CO.**

BY: *Heus C. Thomas*  
REG. C.E. NO. 8224

FOR LEGEND  
SEE PLAN NO. S-6-112

NOTE: GRADES TO WHICH THIS IMPROVEMENT IS TO BE CONSTRUCTED ARE SHOWN ON PLANS AND PROFILES. GRADE POINTS FOR TOP OF CURB, CENTER LINE OF STREET OR CENTER LINE OF ALLEY ARE SHOWN BY CIRCLES OR PROFILES AT ALL POINTS BETWEEN DESIGNATED POINTS THE GRADE SHALL BE ESTABLISHED SO AS TO CONFORM TO A STRAIGHT LINE DRAWN BETWEEN SAID DESIGNATED POINTS. ELEVATIONS ARE IN FEET ABOVE U. S. G. S. DATUM OR MEAN SEA LEVEL. THE ENGINEER AND THE DATA HEREON ARE HEREBY MADE A PART OF THE SPECIFICATIONS. WORK SHALL BE CONSTRUCTED ACCORDING TO SPECIFICATIONS ON FILE IN THE OFFICE OF THE COUNTY ENGINEER AND SHALL BE PROSECUTED ONLY IN THE PRESENCE OF THE COUNTY ENGINEER. BEFORE WORK CAN BE STARTED, THE CONTRACTOR MUST OBTAIN A PERMIT TO EXCAVATE IN COUNTY STREETS FROM THE L. A. COUNTY ROAD DEPT. 108 W. 114 ST. JOSE ANGELES AND MAKE A DEPOSIT WITH THE COUNTY ENGINEER \$200.00 AT 108 W. 114 ST. JOSE, SUFFICIENT TO COVER THE COST OF CONSTRUCTION INSPECTION AND RECORD PLANS. IF WORK IS TO BE DONE IN A STATE HIGHWAY, A PERMIT MUST BE OBTAINED FROM THE STATE OF CALIFORNIA, DIVISION OF HIGHWAYS, 108 STATE BUILDING, AFTER MAKING THE DEPOSIT WITH THE COUNTY ENGINEER.

COUNTY OF LOS ANGELES, CALIFORNIA  
WILLIAM J. FOX, County Engineer  
APPROVED: *W. J. Fox*  
A.M. S.A.W.  
APPROVED BY: *[Signature]* OFFICE ENGINEER  
SANITATION DIVISION

CHECKED BY: *H. J. [Signature]*  
OFFICE OF COUNTY ENGINEER, 108 STATE BUILDING

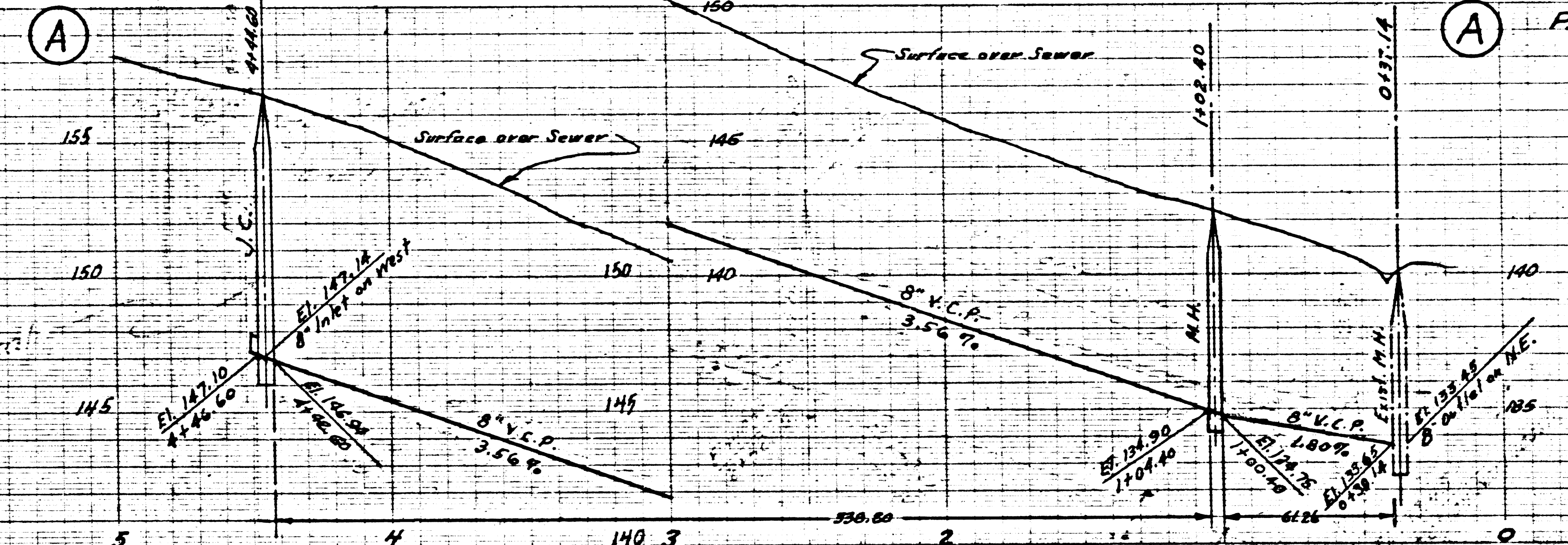
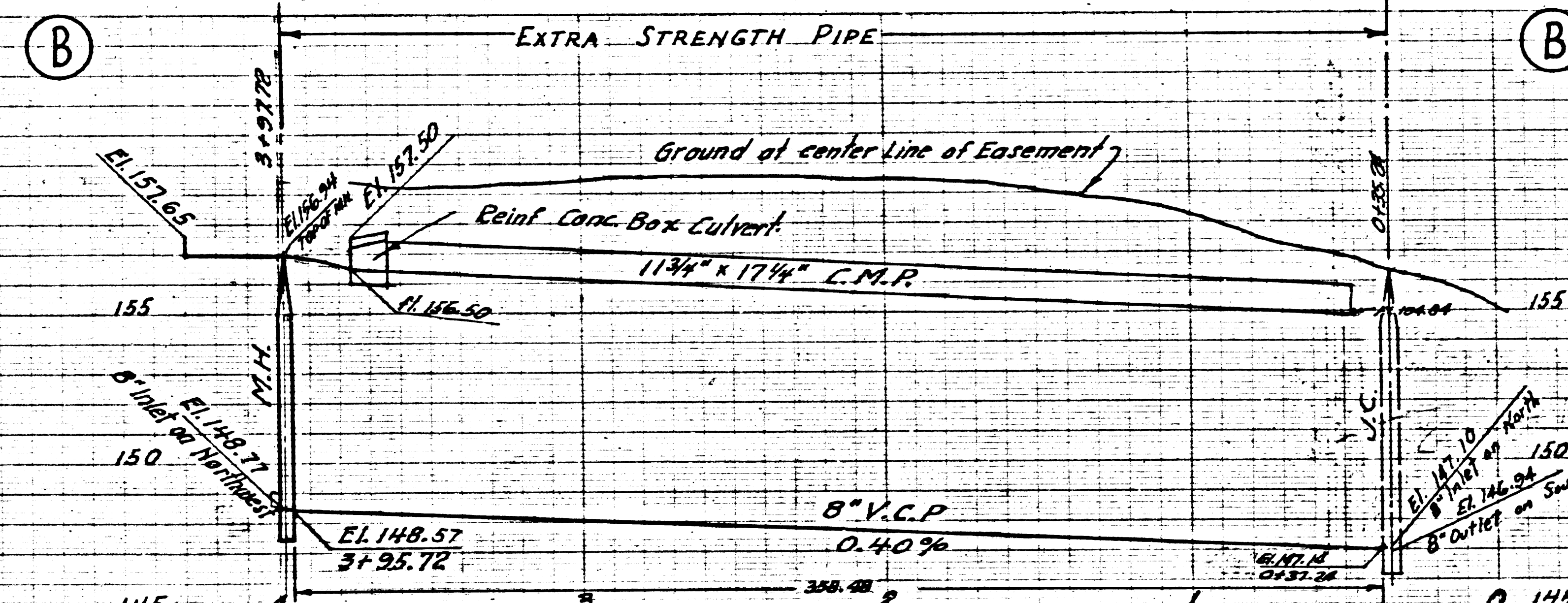
16,149

RECEIVED  
MAR 24 1953  
L.A. COUNTY ENGINEER  
SANITATION DIVISION



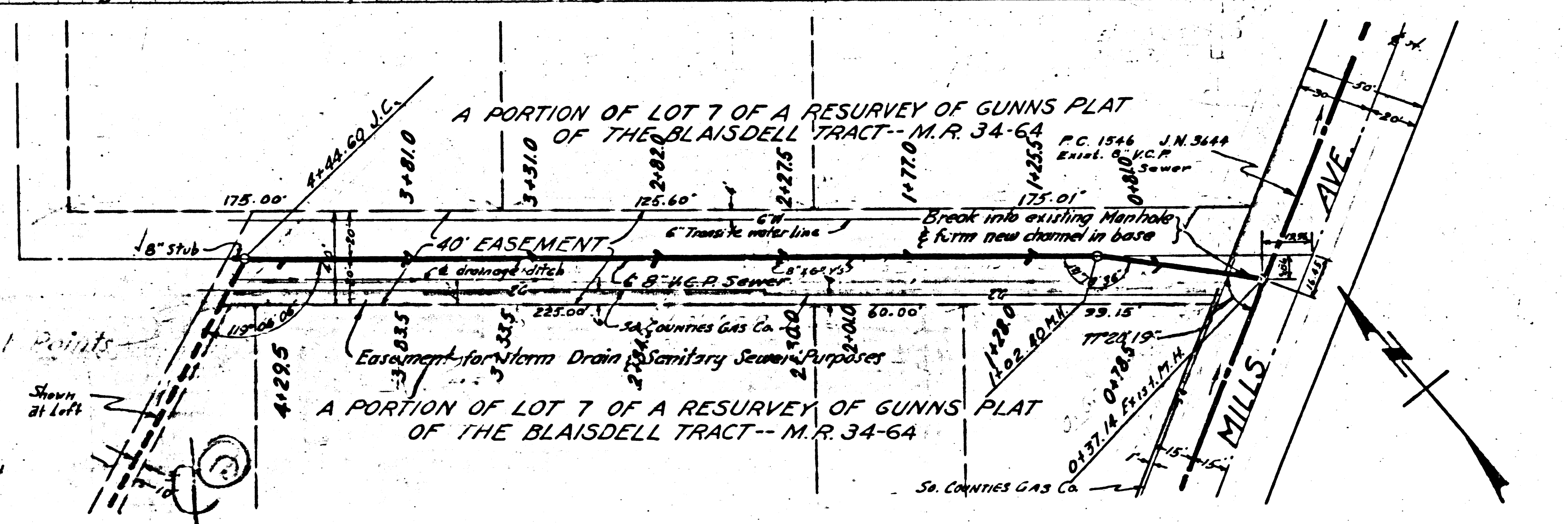
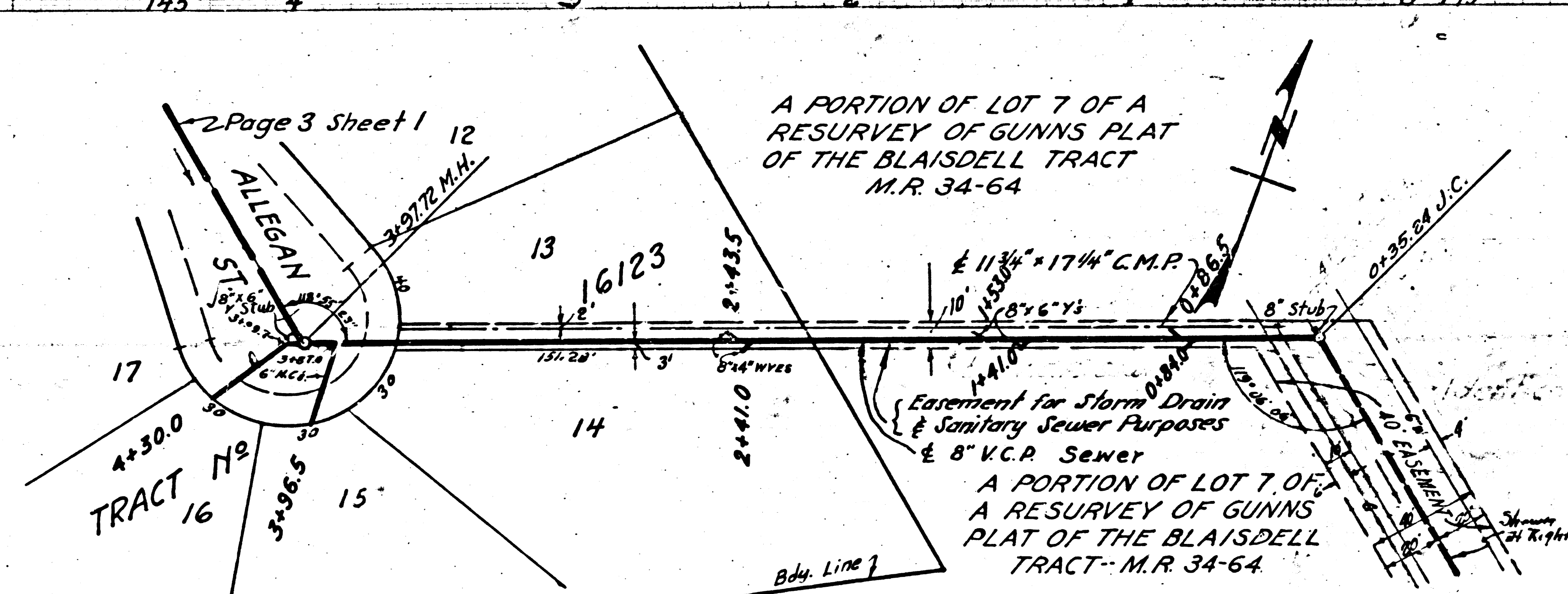
N.F.359  
3

(16,151)



P.C. 2486 J.N.F.359  
PAGE 2

(16,150)

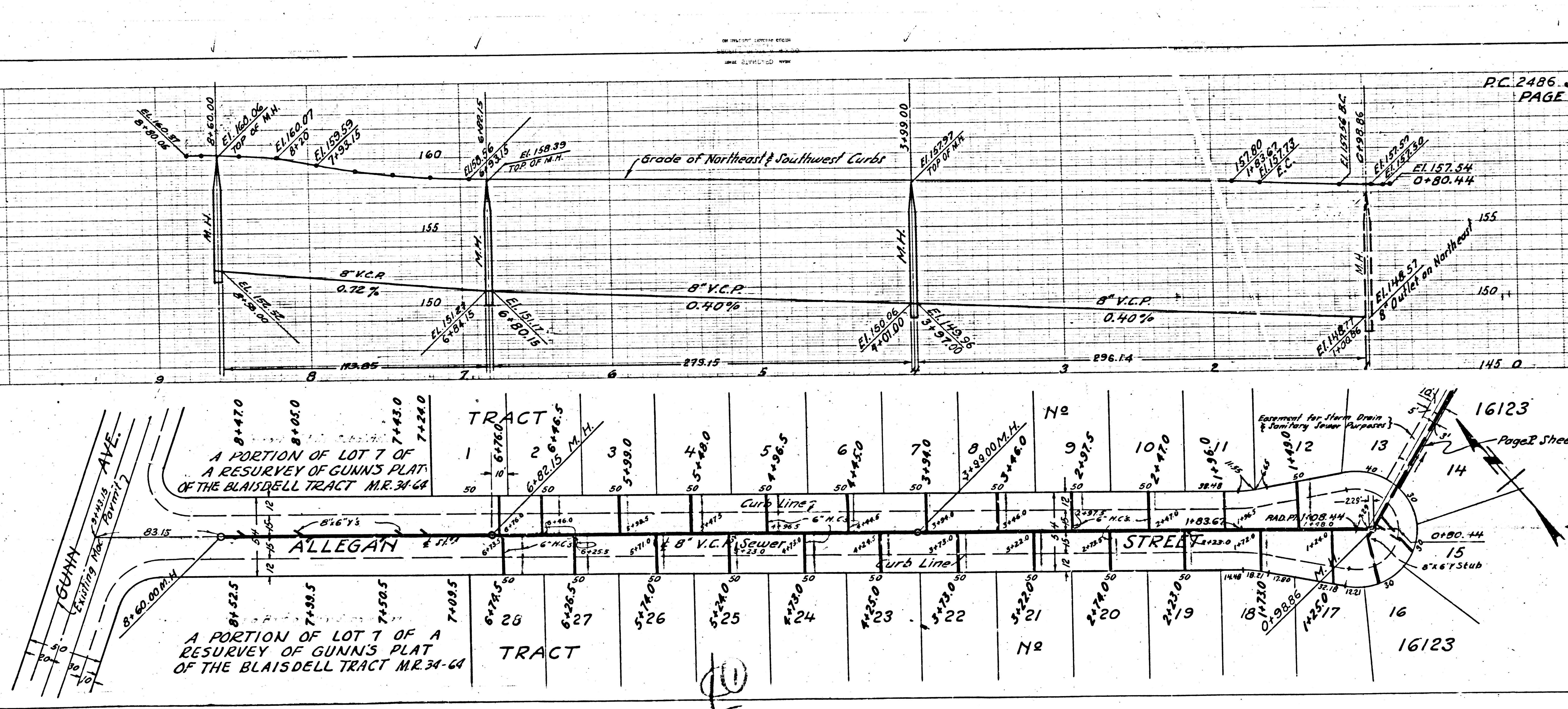




(16,151)

(B)

PC 27436



Page 2 Sheet 11

17  
TRA