

LOMITA

**PROFILE, ALIGNMENT, AND GRADE OF
SANITARY SEWERS
TO BE CONSTRUCTED IN**

PC. 2491
J.N. F. 364
Page 1.

**AVALON BLVD
AT
220th ST.**

(16,249)

**PRIVATE CONTRACT NO. 2491
W.S. 25**

SHEET 1 OF 1 SHEET

SCALE: VERT. 1" = 4'
HORIZ. 1" = 40'

NOV. 1952

PREPARED IN THE OFFICES OF
RALPH B. NUNNELLEY
BY Ralph B. Nunnelley

FOR LEGEND SEE PLAN NO. S-8-64

RECEIVED
NOV 19 1952
CITY ENGINEER'S OFFICE
SANITATION DIVISION

NOTE:
GRADES TO WHICH THIS IMPROVEMENT IS TO BE CONSTRUCTED ARE SHOWN ON PLANS AND
PROFILES. GRADE POINTS FOR TOP OF CURB, CENTER LINE OF STREETS, OR CENTER LINE OF ALLEY ARE
SHOWN BY CIRCLES ON PROFILES AT ALL POINTS BETWEEN DESIGNATED POINTS THE GRADE SHALL BE
ESTABLISHED SO AS TO CONFORM TO A STRAIGHT LINE DRAWN BETWEEN SAID DESIGNATED POINTS.
ELEVATIONS ARE IN FEET ABOVE U.S.C. & G.S. DATUM OF MEAN SEA LEVEL.
THIS DRAWING AND THE DATA HEREON ARE HEREBY MADE A PART OF THE SPECIFICATIONS.
WORK SHALL BE CONSTRUCTED ACCORDING TO SPECIFICATIONS ON FILE IN THE OFFICE OF THE
COUNTY ENGINEER AND SHALL BE PROSECUTED ONLY IN THE PRESENCE OF THE COUNTY ENGINEER.
WHERE WORK CAN BE STARTED, THE CONTRACTOR MUST OBTAIN A PERMIT TO EXCAVATE IN
COUNTY STREETS FROM THE L.A. COUNTY ROAD DEPT., AS WELL AS ST. AND MAKE A DEPOSIT WITH
THE COUNTY ENGINEER, 138 L.A. COUNTY ENGINEERING BUILDING, SUFFICIENT TO COVER
THE COST OF CONSTRUCTION INSPECTION AND RECORD PLANS.
APPROVAL OF THIS PLAN BY THE COUNTY OF LOS ANGELES DOES NOT CONSTITUTE
A REPRESENTATION AS TO THE ACCURACY OF THE LOCATION OF, OR THE EXISTENCE OR
NON-EXISTENCE OF ANY UNDERGROUND UTILITY, PIPE, OR STRUCTURE WITHIN THE LIMITS
OF THIS PROJECT. THIS NOTE APPLIES TO ALL SHEETS.

COUNTY OF LOS ANGELES, CALIFORNIA

APPROVED WILLIAM J. FOX, COUNTY ENGINEER
BY [Signature]
CHIEF DEPUTY

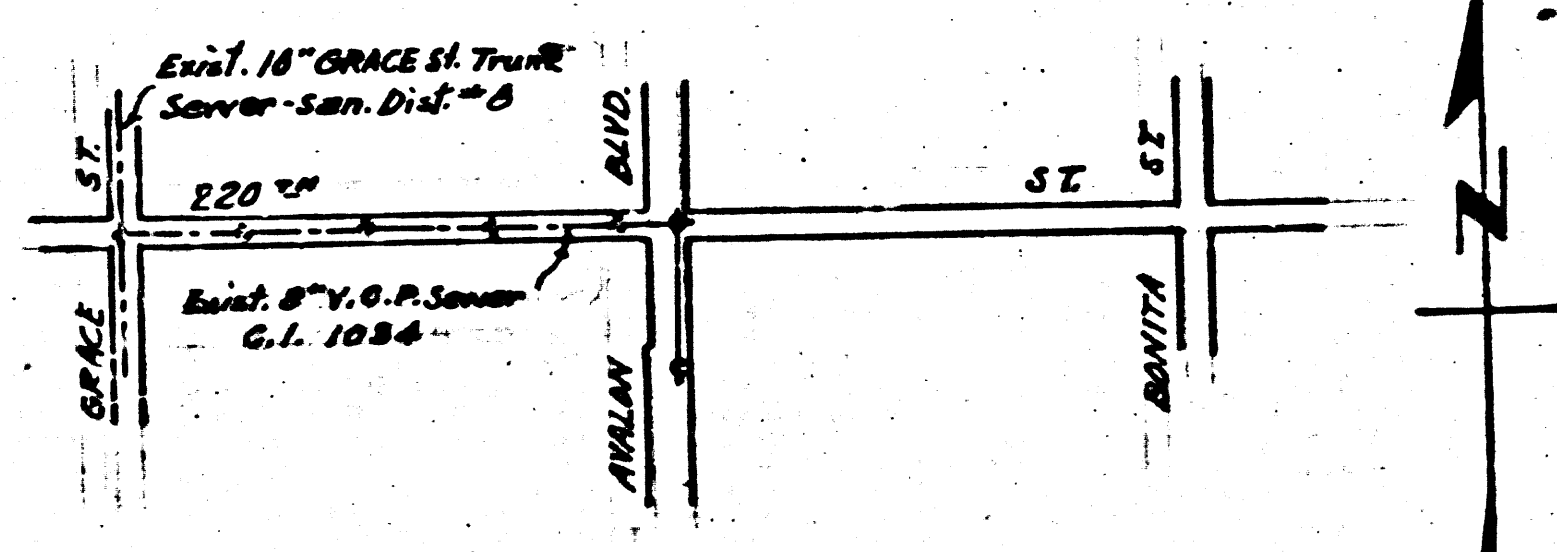
APPROVED A. M. RAWN
CHIEF ENGR. CH. SAN. DIST. NO. 1
BY [Signature]
OFFICE ENGINEER

CHECKED BY: [Signature] 12-9-52
OFFICE OF COUNTY ENGINEER, REG. C.E. No. 1840

- NOTE:**
NO REPRESENTATIVE OF THE COUNTY ENGINEER WILL SURVEY OR LAY OUT ANY
PORTION OF THE WORK.
THE OWNER OR HIS AUTHORIZED REPRESENTATIVE SHALL FURNISH THE COUNTY
ENGINEER WITH GRADE SHEETS AND STATIONS FOR ALL HOUSE CONNECTIONS AND Y BRANCHES
AND SHALL PROVIDE STAKES FOR THEM AT THEIR PROPER LOCATIONS WITH SIGHTING
RANGELY MARKED. ANY CHANGE IN LOCATION SHALL BE REQUESTED IN WRITING BY THE
OWNER OR HIS REPRESENTATIVE.
NO REVISIONS SHALL BE MADE IN THESE PLANS WITHOUT APPROVAL OF THE COUNTY ENGINEER.
1. USE STANDARD FRAMEWORK FRAMES AND COVERS, S-8-117
 2. USE STANDARD STRENGTH PIPE EXCEPT AS NOTED.
 3. USE CEMENT MORTAR FOR ALL VITRIFIED CLAY PIPE JOINTS.
 4. RESURFACE ALL TRENCH WITHIN PAVED AREA TO MEET L.A. COUNTY ROAD DEPT. REQUIREMENTS.
 5. ENCASE FOUR FEET OF SEWER AT PRINTS OF INTERFERENCE WITH PALES, S-8-119.
 6. HOUSE CONNECTIONS TO BE CONSTRUCTED WITH 1/4" RISE PER FOOT TO PROPOSED MAINLINE.
 7. ALL STRUCTURES SHALL BE BRICK SEWER STRUCTURES, S-8-118.
 8. PROVIDE STAKES ON THE PROPERTY LINES OR PROPERTY LINES PRODUCED AT RIGHT ANGLES TO THE SEWER LINE AT THE CENTER LINE OF EACH MANHOLE.
 9. STOPPERS TO BE INSTALLED WITH JOINT COMPOUND BY MANUFACTURER AT HIS PLANT. SPEC'S. SEC. 33.42.
 10. CONCRETE PAVEMENT TO BE CUT NOT LESS THAN 8" IN DEPTH WITH CONCRETE SAW, SPEC'S. SEC. 64.
 11. INSTALL WIRE AND TAGS, SPEC'S. SEC. 48.
 12. EXISTING FLUSHING DEVICE TO BE REMOVED AND DELIVERED TO L.A. COUNTY SEWER MAINTENANCE YARD AT 1129 EAST 59th STREET, LOS ANGELES, CALIFORNIA.
 13. CAP THE END OF THE WATER SERVICE LINE.

ON THE 21st DAY OF OCTOBER 1952
I, [Signature], L.A. Co. E.N. in W. edge
of Cont. Plan. of Avalon B.C. of Curve.

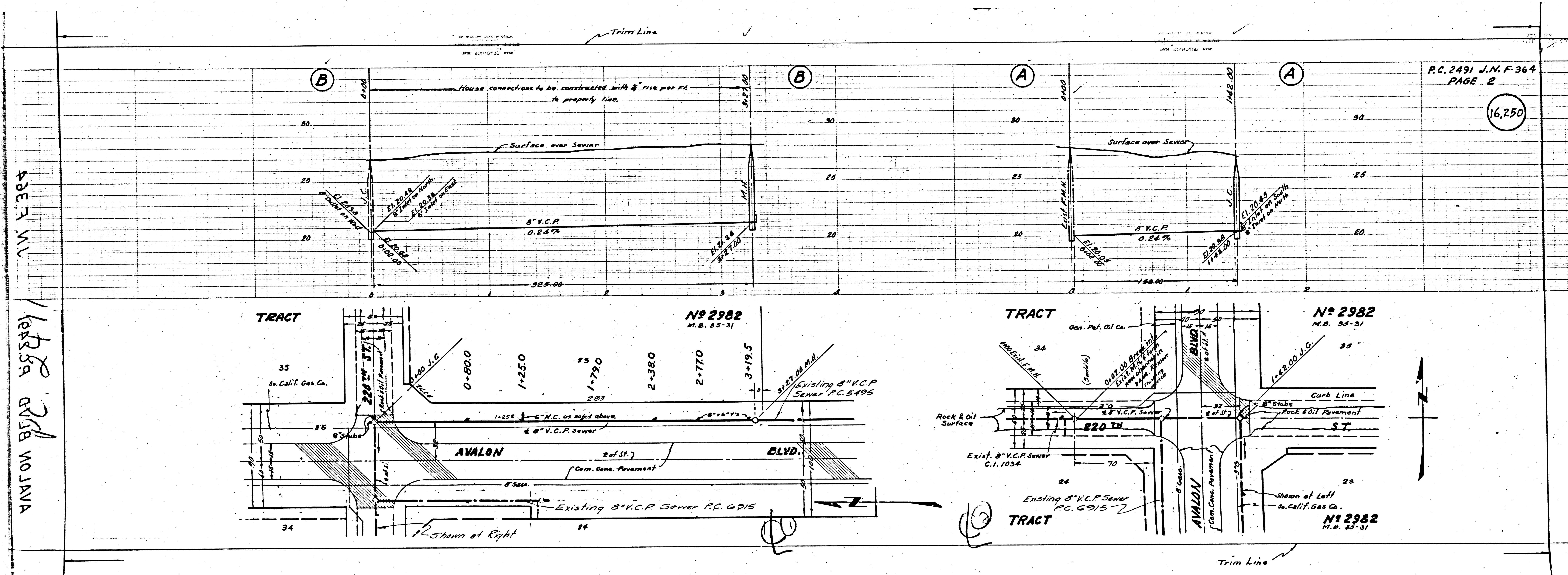
Handwritten notes:
Approved and delivered to the
County Engineer, Los Angeles, Cal.
11-21-52
[Signature]
City Engineer



INDEX MAP
P.C. 2491 J.N. F. 364
Scale 1" = 600'

checked 5-5-53 [Signature]

RECEIVED
NOV 19 1952
CITY ENGINEER'S OFFICE
SANITATION DIVISION



P.C. 2491 J.N.F. 364
PAGE 2

16,250

4857 N.W.

16735A
AVANON

