

BELLFLOWER

B.M. 57-132-53 - ELEV 47876
 L & N 21' E. & of BELLFLOWER
 & 15' S. of ARBOR ROAD

- NOTE:
 NO REPRESENTATIVE OF THE COUNTY ENGINEER WILL SURVEY OR LAY OUT ANY PORTION OF THE WORK.
 THE OWNER OR HIS AUTHORIZED REPRESENTATIVE SHALL FURNISH THE COUNTY ENGINEER WITH GRADE SHEETS AND STAKES FOR ALL HOUSE CONNECTIONS AND Y BRANCHES AND SHALL PROVIDE STAKES FOR THEM AT THEIR PROPER LOCATIONS WITH STATIONING PLAINLY MARKED. ANY CHANGE IN LOCATION SHALL BE REQUESTED IN WRITING BY THE OWNER OR HIS REPRESENTATIVE.
 NO REVISIONS SHALL BE MADE IN THESE PLANS WITHOUT THE APPROVAL OF THE CO. ENGR.
1. USE STANDARD MANHOLE FRAMES AND COVERS S-8-117
 2. USE STANDARD STRENGTH PIPE EXCEPT AS NOTED
 3. USE CEMENT MORTAR FOR ALL VITRIFIED CLAY PIPE JOINTS
 4. RESURFACE ALL TRENCH WITHIN PAVED AREA TO MEET L.A. COUNTY ROAD DEPT. REQUIREMENTS
 5. ENCASE FOUR FEET OF SENDER AT POINTS OF INTERFERENCE WITH POLES S-8-119
 6. HOUSE CONNECTIONS TO BE CONSTRUCTED WITH INVERTS AT PROPERTY LINE 5 FEET BELOW CURB GRADE
 7. ALL STRUCTURES SHALL BE BRICK SENDER STRUCTURES S-4-104
 8. PROVIDE STAKES ON THE PROPERTY LINES OR PROPERTY LINES PRODUCED AT RIGHT ANGLES TO THE SENDER LINE AT THE CENTER LINE OF EACH MANHOLE
 9. STAKERS TO BE INSTALLED WITH JOINT COMPOUND BY MANUFACTURER AT HIS PLANT. SPECS. SEC 33.48
 10. CONCRETE PAVEMENT TO BE CUT NOT LESS THAN 2" IN DEPTH WITH CONCRETE SAW SPECS. SEC 63
 11. INSTALL WIRE AND TAGS. SPECS. SEC. 48

PROFILE, ALIGNMENT, AND GRADE OF
SANITARY SEWERS
 TO BE CONSTRUCTED IN

P.C. 2493
 J.N.F. 367
 Page 1.

TRACT NO. 18726

(16,179)

PRIVATE CONTRACT NO. 2493
 W. S. 31
 SHEET 1 OF 1 SHEET
 SCALE: VERT. 1" = 4'
 HORIZ. 1" = 40'
 November 1952

PREPARED BY Arthur H. Adams
 REG. C.E. NO. 33

FOR LEGEND SEE PLAN NO. S-8-64

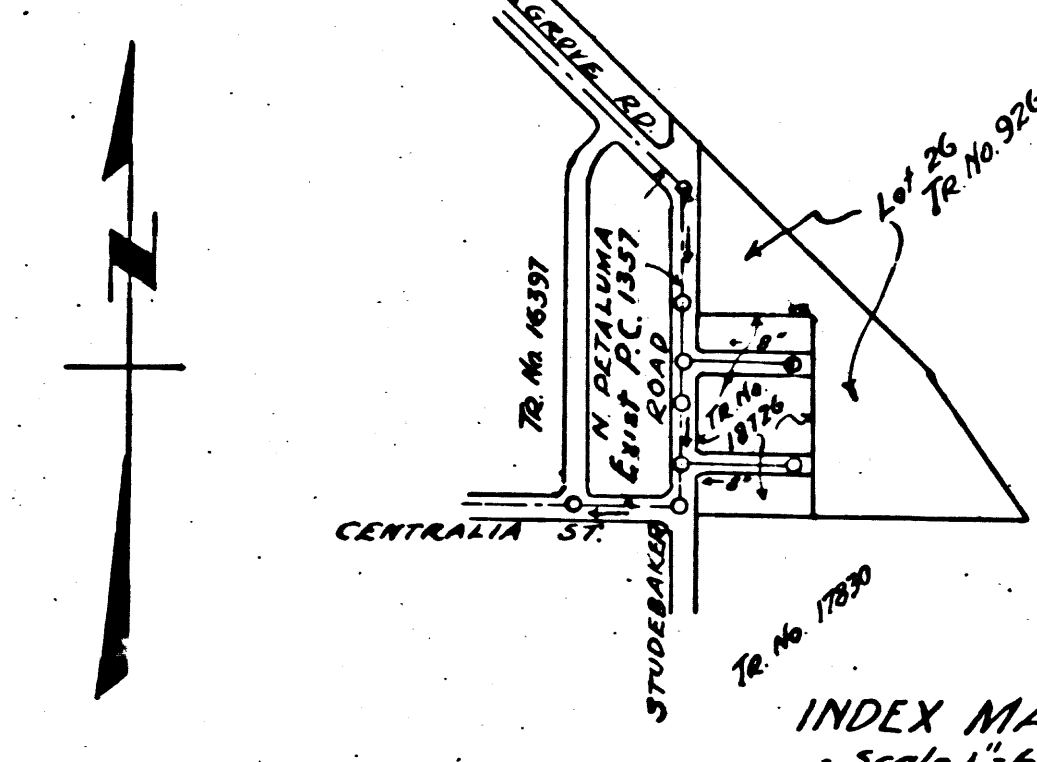
NOTE:
 GRADES TO WHICH THIS IMPROVEMENT IS TO BE CONSTRUCTED ARE SHOWN ON PLANS AND PROFILES. GRADE POINTS FOR TOP OF CURBS, CENTER LINE OF STREETS OR CENTER LINE OF ALLEY ARE SHOWN BY CIRCLES ON PROFILES. AT ALL POINTS BETWEEN DESIGNATED POINTS THE GRADE SHALL BE ESTABLISHED SO AS TO CONFORM TO A STRAIGHT LINE DRAWN BETWEEN SAID DESIGNATED POINTS. ELEVATIONS ARE IN FEET ABOVE U.S.S. DATUM OR MEAN SEA LEVEL.
 THIS DRAWING AND THE DATA HEREON ARE HEREBY MADE A PART OF THE SPECIFICATIONS. WORK SHALL BE CONSTRUCTED ACCORDING TO SPECIFICATIONS ON FILE IN THE OFFICE OF THE COUNTY ENGINEER AND SHALL BE IN THE POSSESSION OF THE COUNTY ENGINEER.
 BEFORE WORK CAN BE STARTED, THE CONTRACTOR MUST OBTAIN A PERMIT TO EXCAVATE IN COUNTY STREETS FROM THE L.A. COUNTY ROAD DEPT. FOR W 2nd ST AND MAKE A DEPOSIT WITH THE COUNTY ENGINEER, 715 L.A. COUNTY ENGINEERING BUILDING, SUFFICIENT TO COVER THE COST OF CONSTRUCTION INSPECTION AND RECORDED PLANS.
 APPROVAL OF THIS PLAN BY THE COUNTY OF LOS ANGELES DOES NOT CONSTITUTE A REPRESENTATION AS TO THE ACCURACY OF THE LOCATION OF OR THE EXISTENCE OR NON-EXISTENCE OF ANY UNDERGROUND UTILITY PIPE OR STRUCTURE WITHIN THE LIMITS OF THIS PROJECT. THIS NOTE APPLIES TO ALL SHEETS.

COUNTY OF LOS ANGELES, CALIFORNIA

APPROVED, WILLIAM J. FOX COUNTY ENGR. APPROVED, A.M. RAWIN
 CHIEF ENGR. FOR SAN. DIST. NO. 3 CHIEF ENGR. FOR SAN. DIST. NO. 3
 BY Arthur H. Adams BY Arthur H. Adams
 CHIEF DEPUTY OFFICE ENGINEER

CHECKED BY: R. L. ... 12-9-52
 OFFICE OF COUNTY ENGINEER, REG. C.S. NO. 12160

| SHEET NO | PAGES |
|----------|-------|
| 1 | 2 |
| | |
| | |
| | |
| | |



INDEX MAP
 Scale 1" = 600'

P.C. 2493 J.N.F. 367

U.G. O.K.
 11-21-52
 R.S.

TRACT 18726
 HENRIE ST
 ZEBRON ST
 SHEET 1 OF 2 SHEET
 P.C. 2493 J.N.F. 367

16,174

