

LENNOX

Trim Lines

PROFILE, ALIGNMENT, AND GRADE OF
SANITARY SEWERS P.C. 2496 - J.N. 370
TO BE CONSTRUCTED IN SHEET Page 1.

TRACT No 17763
143 RD. PLACE
BETWEEN WADKINS AVE & WILKIE AVE.
144TH STREET
BETWEEN WADKINS AVE & DUBLIN AVE.
145TH STREET
BETWEEN WADKINS AVE & DUBLIN AVE.
WILKIE AVENUE
BETWEEN 143RD PLACE & 144TH STREET
PRIVATE CONTRACT NO. 2496
W.S.
SHEET 1 OF 2 SHEETS
SCALE: VERT 1" = 4'
HORIZ 1" = 40' DECEMBER 1952

PREPARED IN THE OFFICE OF
ADAMS & ELLS ENGINEERS - EL MONTE
BY [Signature]
FOR LEGEND SEE PLAN No 5-a-64

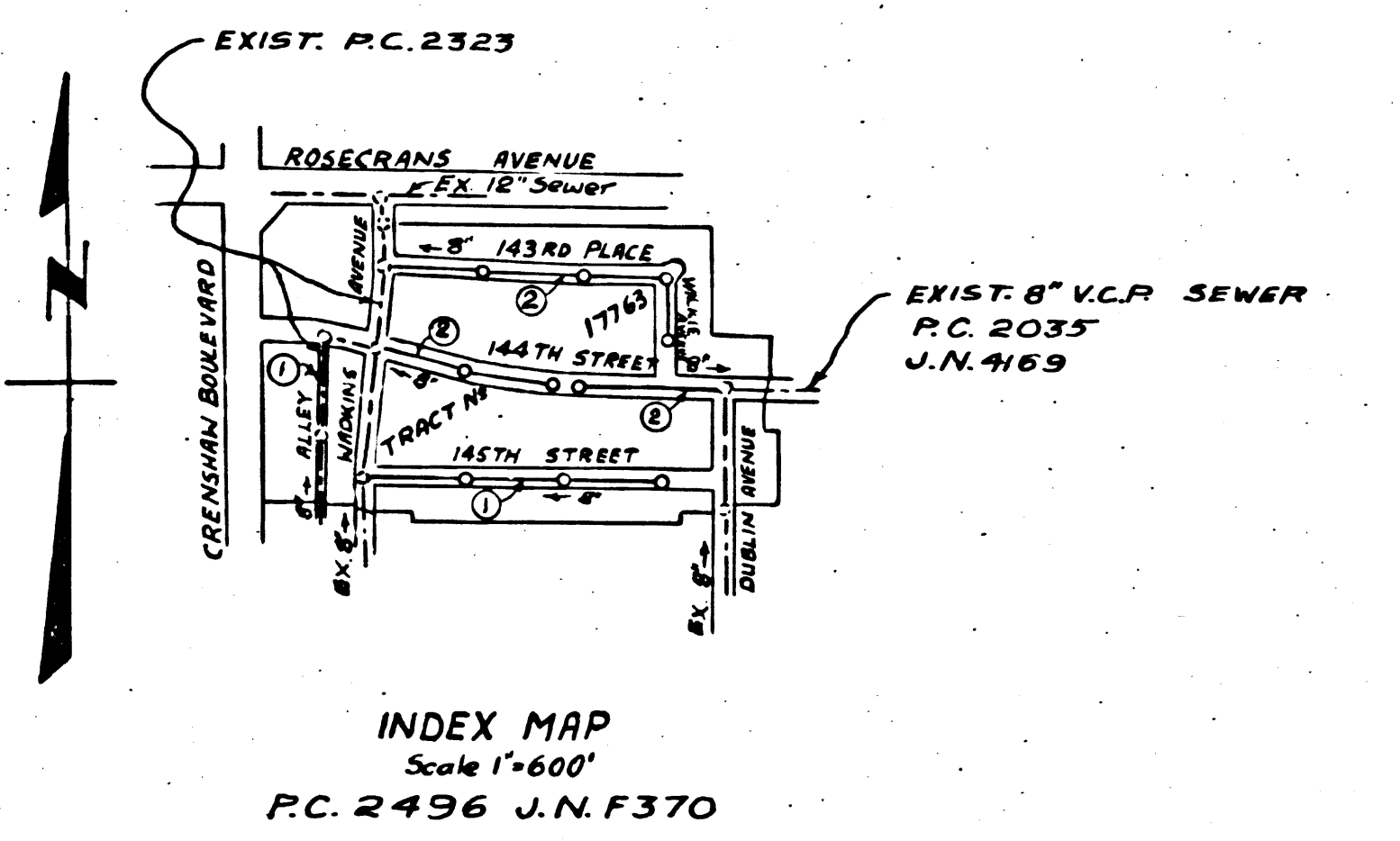
NOTE:
GRADES TO WHICH THIS IMPROVEMENT IS TO BE CONSTRUCTED ARE SHOWN ON PLANS AND
PROFILES. GRADE POINTS FOR TOP OF CURBS, CENTER LINE OF STREETS, OR CENTER LINE OF ALLEY ARE
SHOWN BY CIRCLES ON PROFILES AT ALL POINTS BETWEEN DESIGNATED POINTS. THE GRADE SHALL BE
ESTABLISHED SO AS TO CONFORM TO A STRAIGHT LINE DRAWN BETWEEN SAID DESIGNATED POINTS.
ELEVATIONS ARE IN FEET ABOVE U.S.G.S. DATUM OR MEAN SEA LEVEL.
THIS DRAWING AND THE DATA HEREON ARE HEREBY MADE A PART OF THE SPECIFICATIONS.
WORK SHALL BE CONSTRUCTED ACCORDING TO SPECIFICATIONS ON FILE IN THE OFFICE OF THE
COUNTY ENGINEER AND SHALL BE PROSECUTED ONLY IN THE PRESENCE OF THE COUNTY ENGINEER
BEFORE WORK CAN BE STARTED THE CONTRACTOR MUST OBTAIN A PERMIT TO EXCAVATE IN
COUNTY STREETS FROM THE L.A. COUNTY ROAD DEPT. 108 W 2ND ST. AND HAVE A DEPOSIT
WITH THE COUNTY ENGINEER 733 L.A. COUNTY ENGINEERING BUILDING SUFFICIENT TO COVER
THE COST OF CONSTRUCTION INSPECTION AND RECORD PLANS.
APPROVAL OF THIS PLAN BY THE COUNTY OF LOS ANGELES DOES NOT CONSTITUTE
A REPRESENTATION AS TO THE ACCURACY OF THE LOCATION OF, OR THE EXISTENCE OR
NON-EXISTENCE OF, ANY UNDERGROUND UTILITY PIPE, OR STRUCTURE WITHIN THE LIMITS
OF THIS PROJECT. THIS NOTE APPLIES TO ALL SHEETS.

COUNTY OF LOS ANGELES, CALIFORNIA
APPROVED WILLIAM J. FOX COUNTY ENGINEER
BY [Signature] CHIEF DEPUTY
APPROVED AM RAWN
CHIEF ENGR. CD SAN DIST. NO. 5
BY [Signature] OFFICE ENGINEER
CHECKED BY [Signature] 12-18-52
OFFICE OF COUNTY ENGINEER, REG. C.E. NO. 7860

- NOTE:
NO REPRESENTATIVE OF THE COUNTY ENGINEER WILL SURVEY OR LAY OUT ANY
PORTION OF THE WORK.
THE OWNER OR HIS AUTHORIZED REPRESENTATIVE SHALL FURNISH THE COUNTY
ENGINEER WITH GRADE SHEETS AND STATIONS FOR ALL HOUSE CONNECTIONS AND Y BRANCHES
AND SHALL PROVIDE STAKES FOR THEM AT THEIR PROPER LOCATIONS WITH STATIONING
PLAINLY MARKED. ANY CHANGE IN LOCATION SHALL BE REQUESTED IN WRITING BY THE
OWNER OR HIS REPRESENTATIVE.
NO REVISIONS SHALL BE MADE IN THESE PLANS WITHOUT APPROVAL OF THE COUNTY ENGINEER
1. USE STANDARD MANHOLE FRAMES AND COVERS S-a-117
 2. USE STANDARD STRENGTH PIPE EXCEPT AS NOTED
 3. USE CEMENT MORTAR FOR ALL VITRIFIED CLAY PIPE JOINTS
 4. RESURFACE ALL TRENCH WITHIN PAVED AREA TO MEET L.A. COUNTY ROAD DEPT. REQUIREMENTS
 5. ENCASE FOUR FEET OF SEWER AT POINTS OF INTERFERENCE WITH POLES, S-a-119.
 6. HOUSE CONNECTIONS TO BE CONSTRUCTED WITH INVERTS AT PROPERTY LINE FEET BELOW CURB GRADE.
 7. ALL STRUCTURES SHALL BE BRICK SEWER STRUCTURES S-a-104
 8. PROVIDE STAKES ON THE PROPERTY LINES OR PROPERTY LINES PRODUCED AT RIGHT ANGLES TO THE SEWER LINE AT THE CENTER LINE OF EACH MANHOLE
 9. STOPPERS TO BE INSTALLED WITH JOINT COMPOUND BY MANUFACTURER AT HIS PLANT - SPEC'S - SEC 33.48
 10. CONCRETE PAVEMENT TO BE CUT NOT LESS THAN 2" IN DEPTH WITH CONCRETE SAW SPEC'S SEC 65.
 11. INSTALL WIRE AND TAGS. SPEC'S SEC. 48.

B.M. 53550 Lead and Jack
in Concrete Pavement On E
Prod of Arlington Ave New
Van Ness Ave & 14th South of
E of Rosecrans Ave
Elev 45.935

SHEET NO	PAGES
1	1-4
2	5-8



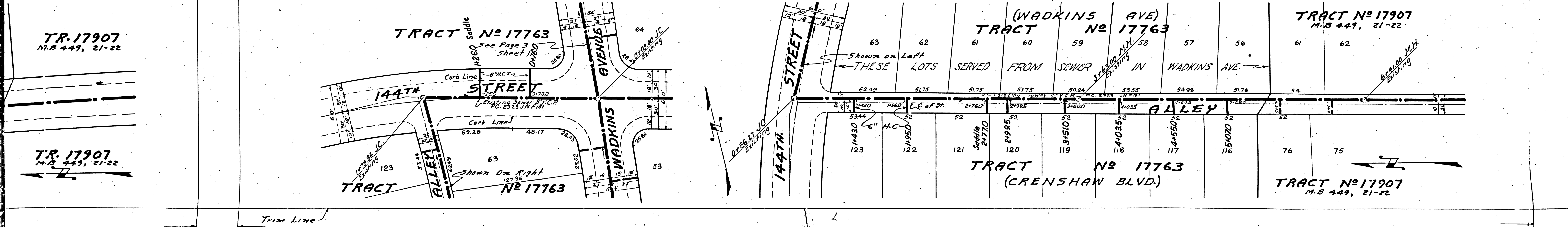
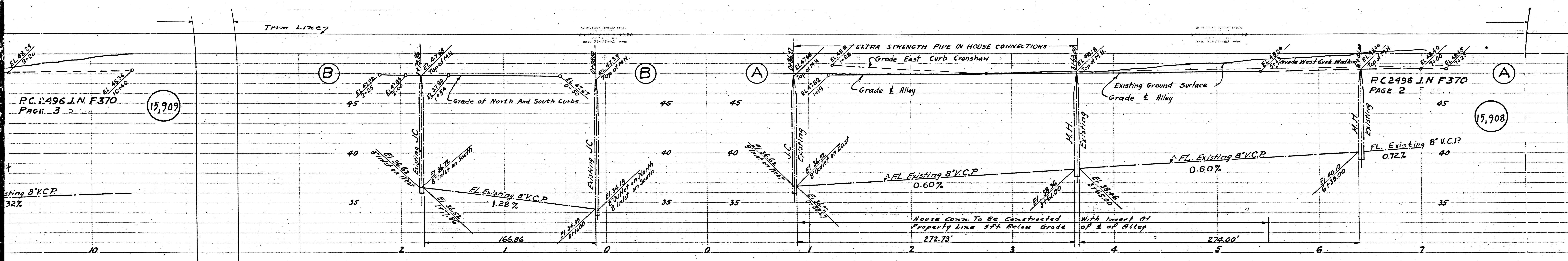
Checked 3-2-53 [Signature]

1 WADKINS 143RD ST
144TH ST
145TH ST
B.C. 5388 N.M. F310 1

15,907

(9)

Trim Lines

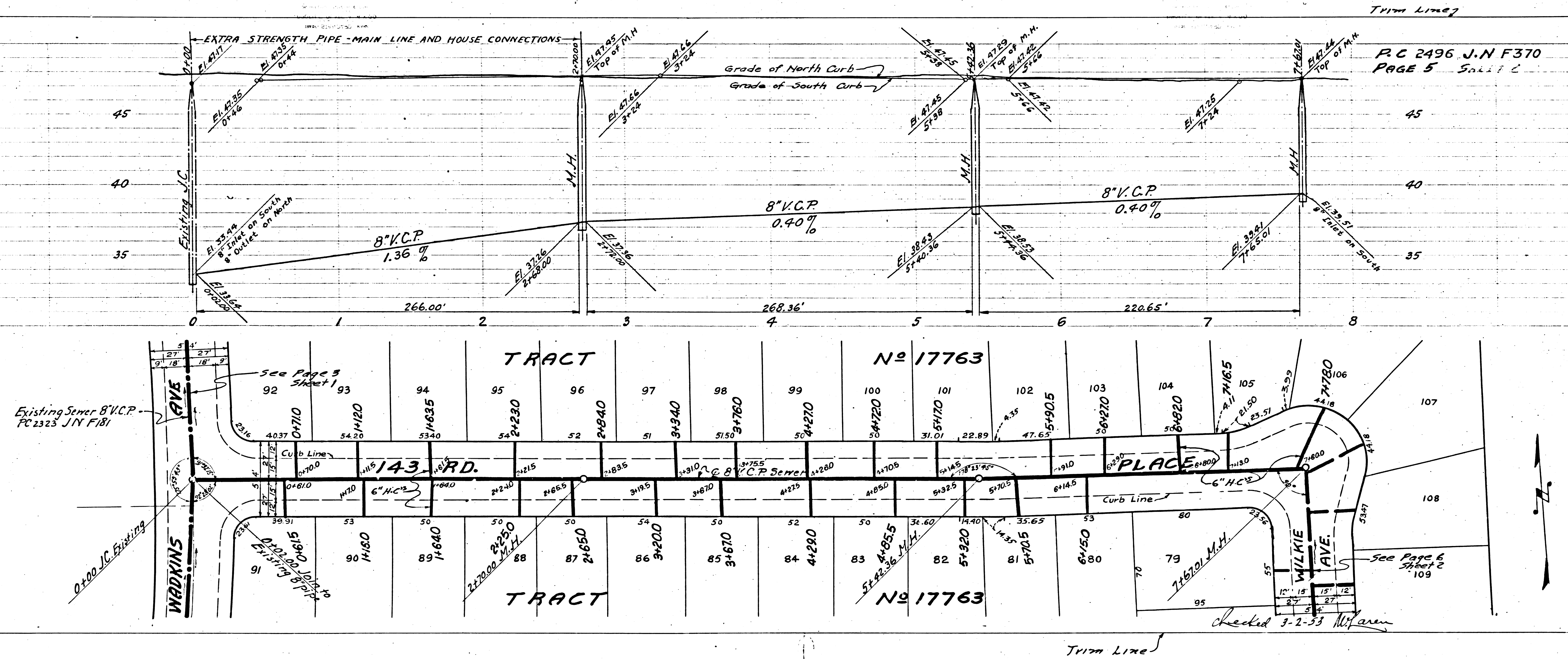


15,912

15,911

TRACT No 17763

144th St, MILKIE AVE
143rd Pl, DORTM AVE
B.C. 5489 N.M. F.310



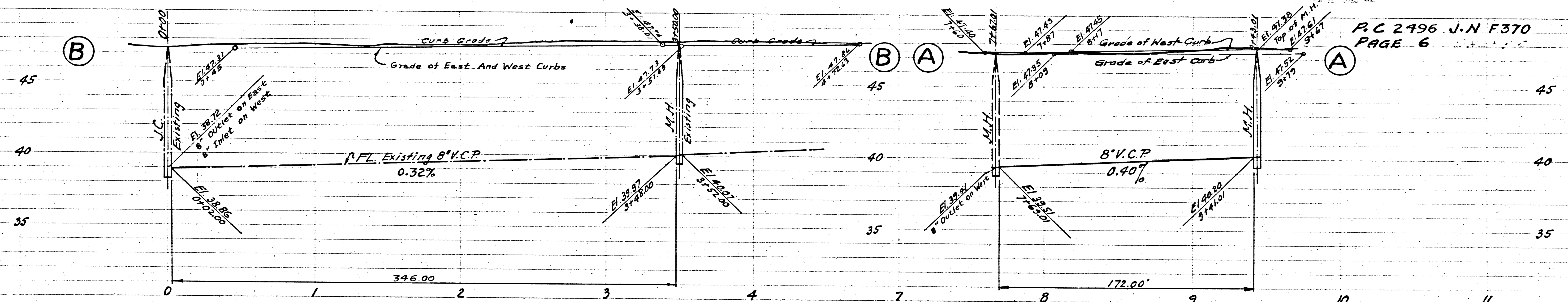
PC 2496 J.N. F.370
PAGE 5 Solid C

Checked 3-2-53 W. H. Allen

F 370

15,913

Trim Line



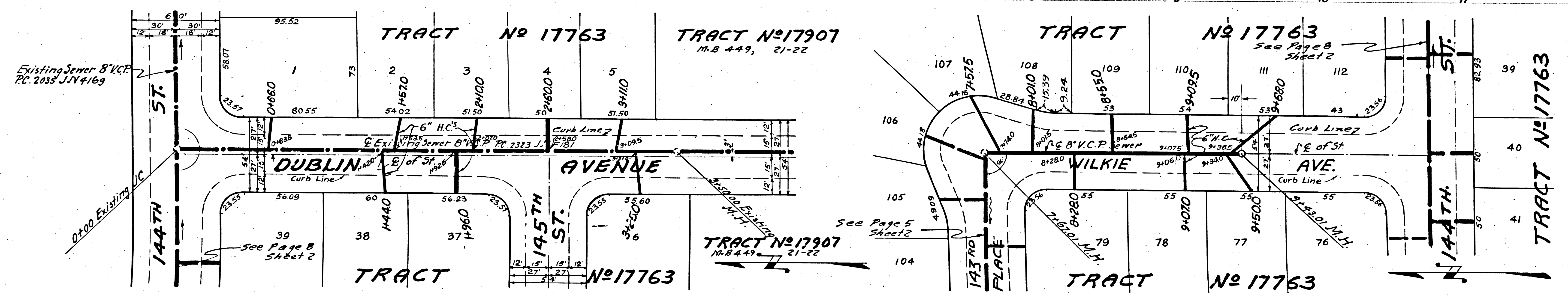
PC 2496 J-N F370
PAGE 6

15,912

See Page 8
Sheet 2



Trim Line

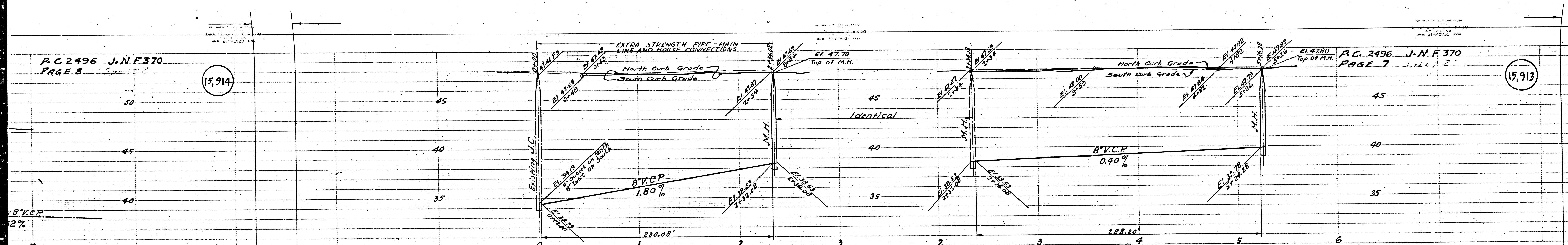


See Page 5
Sheet 2

See Page 8
Sheet 2

P.C. 2496 J.N.F.370
PAGE 8

15,914



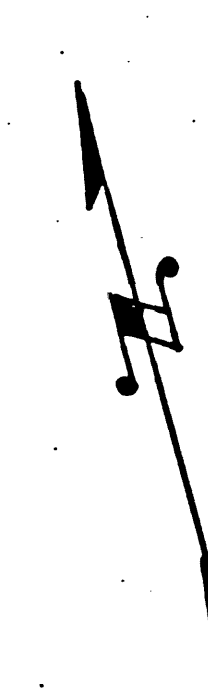
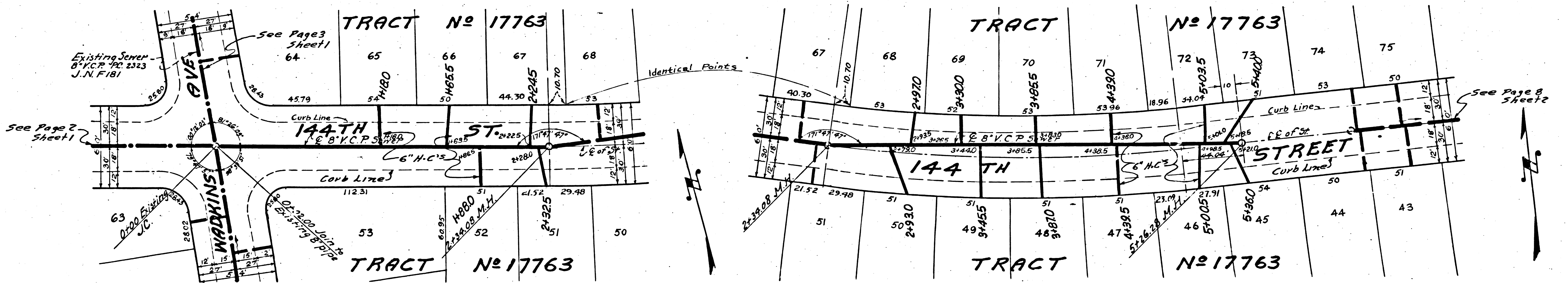
P.C. 2496 J.N.F.370
PAGE 7

15,913

TR. No 17504
M.B. 436 47-48
57

Existing Sewer
8" V.C.P. No. 2323
J.N.F.181

TR. No 17504
M.B. 436 47-48
56

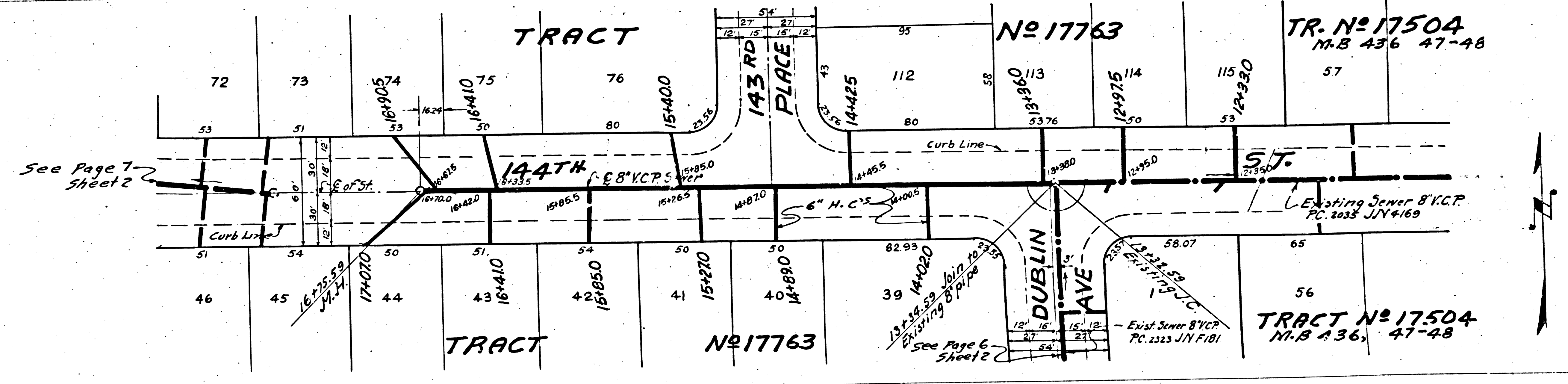
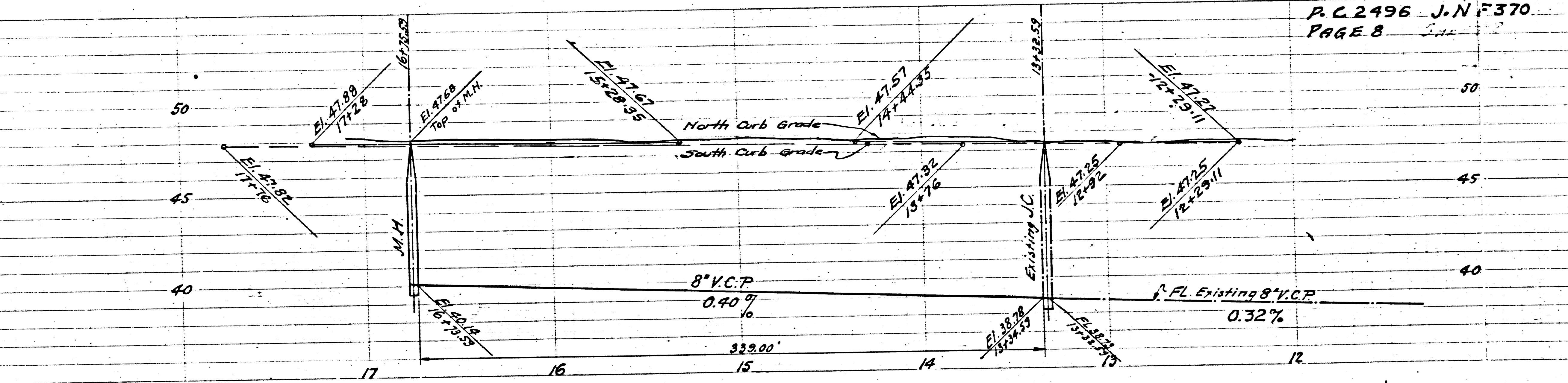


⑤ DUBLIN ST. 144TH ST. 143RD ST. 142ND ST. 141ST ST. 140TH ST. 139TH ST. 138TH ST. 137TH ST. 136TH ST. 135TH ST. 134TH ST. 133TH ST. 132TH ST. 131ST ST. 130TH ST. 129TH ST. 128TH ST. 127TH ST. 126TH ST. 125TH ST. 124TH ST. 123RD ST. 122RD ST. 121RD ST. 120RD ST. 119RD ST. 118RD ST. 117RD ST. 116RD ST. 115RD ST. 114RD ST. 113RD ST. 112RD ST. 111RD ST. 110RD ST. 109RD ST. 108RD ST. 107RD ST. 106RD ST. 105RD ST. 104RD ST. 103RD ST. 102RD ST. 101RD ST. 100RD ST. 99RD ST. 98RD ST. 97RD ST. 96RD ST. 95RD ST. 94RD ST. 93RD ST. 92RD ST. 91RD ST. 90RD ST. 89RD ST. 88RD ST. 87RD ST. 86RD ST. 85RD ST. 84RD ST. 83RD ST. 82RD ST. 81RD ST. 80RD ST. 79RD ST. 78RD ST. 77RD ST. 76RD ST. 75RD ST. 74RD ST. 73RD ST. 72RD ST. 71RD ST. 70RD ST. 69RD ST. 68RD ST. 67RD ST. 66RD ST. 65RD ST. 64RD ST. 63RD ST. 62RD ST. 61RD ST. 60RD ST. 59RD ST. 58RD ST. 57RD ST. 56RD ST. 55RD ST. 54RD ST. 53RD ST. 52RD ST. 51RD ST. 50RD ST. 49RD ST. 48RD ST. 47RD ST. 46RD ST. 45RD ST. 44RD ST. 43RD ST. 42RD ST. 41RD ST. 40RD ST. 39RD ST. 38RD ST. 37RD ST. 36RD ST. 35RD ST. 34RD ST. 33RD ST. 32RD ST. 31RD ST. 30RD ST. 29RD ST. 28RD ST. 27RD ST. 26RD ST. 25RD ST. 24RD ST. 23RD ST. 22RD ST. 21RD ST. 20RD ST. 19RD ST. 18RD ST. 17RD ST. 16RD ST. 15RD ST. 14RD ST. 13RD ST. 12RD ST. 11RD ST. 10RD ST. 9RD ST. 8RD ST. 7RD ST. 6RD ST. 5RD ST. 4RD ST. 3RD ST. 2RD ST. 1RD ST. ⑤

P. 24116

Trim Line

P.C. 2496 J.N.F. 370
PAGE 8



Trim Line

See Page 7 - Sheet 2

See Page 6 - Sheet 2

Existing Sewer 8" V.C.P. P.C. 2033 J.N.F. 469

Existing Sewer 8" V.C.P. P.C. 2033 J.N.F. 469