

Lennox

B.M. # "FA 36" Elev. 48.181 N.E. Corner
Manhattan Beach Blvd. & Crenshaw Blvd.
Dist 5th. in city 10th. of N. end of curb return (F.B. 110-149)

- NOTE: NO REPRESENTATIVE OF THE COUNTY ENGINEER WILL SURVEY OR LAY OUT ANY PORTION OF THE WORK.
- THE OWNER OR HIS AUTHORIZED REPRESENTATIVE SHALL FURNISH THE COUNTY ENGINEER WITH GRADE SHEETS AND STATIONS FOR ALL MAINS, CONNECTIONS AND Y BRANCHES AND SHALL PROVIDE STAKES FOR THEM AT THEIR PROPER LOCATIONS WITH STRIKINGS PLAINLY MARKED. ANY CHANGE IN LOCATION SHALL BE REQUESTED IN WRITING BY THE OWNER OR HIS REPRESENTATIVE.
- NO REVISIONS SHALL BE MADE IN THESE PLANS WITHOUT APPROVAL OF THE COUNTY ENGINEER.
1. USE SHALLOW MANHOLE FRAMES AND COVERS, S-8-131
 2. USE STANDARD STRENGTH PIPE
 3. USE CEMENT MORTAR FOR ALL VENTED CLAY PIPE JOINTS.
 4. RESURFACE ALL TRENCH WITHIN PAVED AREA TO MEET L.A. COUNTY ROAD DEPT REQUIREMENTS.
 5. ENCASE FOUR FEET OF SEWER AT POINTS OF INTERFERENCE WITH PALES, S-8-119.
 6. WHERE CONNECTIONS TO BE CONSTRUCTED AS NOTED.
 7. ALL STRUCTURES SHALL BE "SHALLOW" MANHOLES, S-8-130
 8. PROVIDE STAKES ON THE PROPERTY LINES OR PROPERTY LINES PRODUCED AT RIGHT ANGLES TO THE SEWER LINE AT THE CENTER LINE OF EACH MANHOLE.
 9. STOPPERS TO BE INSTALLED WITH JOINT COMPOUND BY MANUFACTURER AT HIS PLANT. SPEC'S. SEC. 38-49
 10. CONCRETE PAVEMENT TO BE CUT AND LESS THAN 8" IN DEPTH WITH CONCRETE SAW, SPEC'S. SEC. 64
 11. INSTALL WIRE AND TAGS. SPEC'S. SEC. 48

PC 2497- J.N.F 371
 PROFILE, ALIGNMENT, AND GRADE OF
SANITARY SEWERS
 TO BE CONSTRUCTED IN
MANHATTAN BEACH BLVD AND
CHADRON AVENUE
WEST OF CRENSHAW BLVD.

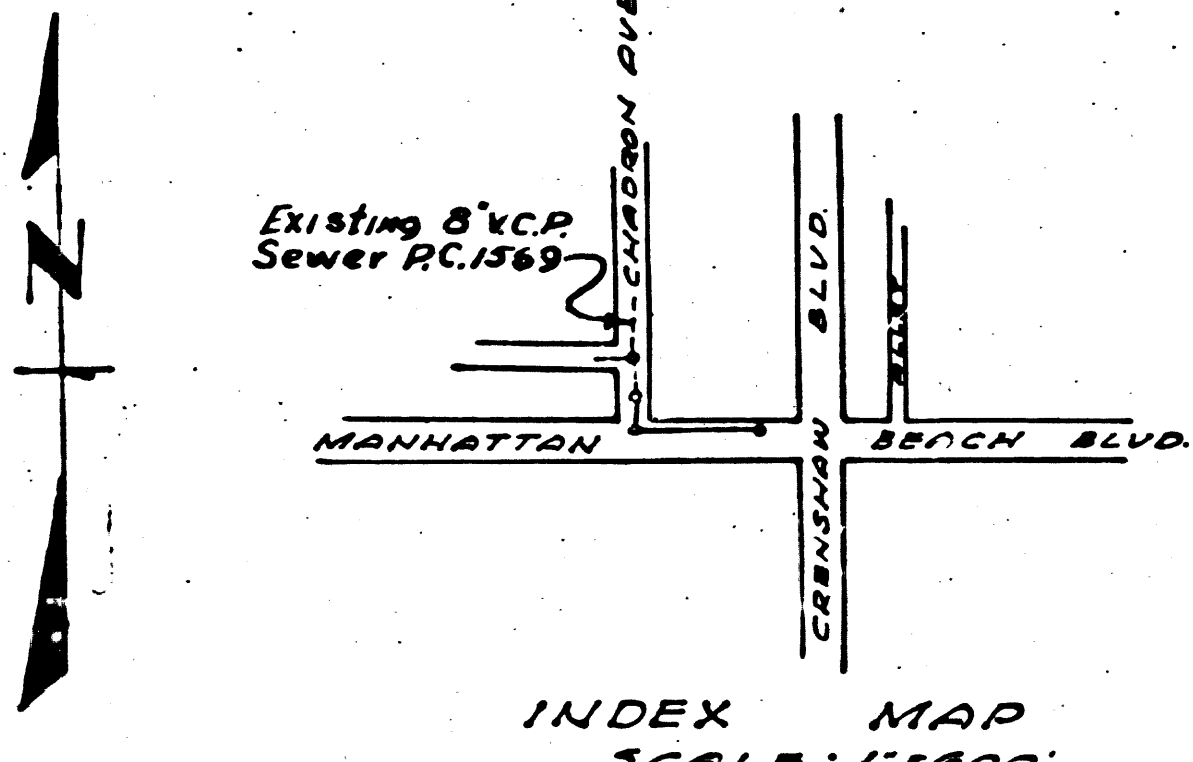
PRIVATE CONTRACT NO. 2497
 W.S. 25
 SHEET 1 OF 1 SHEETS
 SCALE: VERT. 1" = 4'
 HORIZ. 1" = 40' NOV 1952
 PREPARED IN THE OFFICES OF
 RALPH B. NUNNELLEY
 BY Ralph B. Nunnelley
 FOR LEGEND SEE PLAN NO. S-8-64

NOTE:
 GRADES TO WHICH THIS IMPROVEMENT IS TO BE CONSTRUCTED ARE SHOWN ON PLANS AND PROFILES. GRADE POINTS FOR TOP OF CURB, CENTER LINE OF STREETS, OR CENTER LINE OF ALLEY ARE SHOWN BY CIRCLES ON PROFILES. AT ALL POINTS BETWEEN DESIGNATED POINTS THE GRADE SHALL BE ESTABLISHED SO AS TO CONFORM TO A STRAIGHT LINE DRAWN BETWEEN SAID DESIGNATED POINTS. ELEVATIONS ARE IN FEET ABOVE U.S.S. DATUM OR MEAN SEA LEVEL.

THIS DRAWING AND THE DATA HEREON ARE HEREBY MADE A PART OF THE SPECIFICATIONS. WORK SHALL BE CONSTRUCTED ACCORDING TO SPECIFICATIONS ON FILE IN THE OFFICE OF THE COUNTY ENGINEER AND SHALL BE PROSECUTED ONLY IN THE PRESENCE OF THE COUNTY ENGINEER. BEFORE WORK CAN BE STARTED, THE CONTRACTOR MUST OBTAIN A PERMIT TO EXCAVE IN COUNTY STREETS FROM THE L.A. COUNTY ROAD DEPT., 100 W. 5th ST. AND MAKE A DEPOSIT WITH THE COUNTY ENGINEER, 733 L.A. COUNTY ENGINEERING BUILDING, SUFFICIENT TO COVER THE COST OF CONSTRUCTION INSPECTION AND RECORD PLANS.

APPROVAL OF THIS PLAN BY THE COUNTY OF LOS ANGELES DOES NOT CONSTITUTE A REPRESENTATION AS TO THE ACCURACY OF THE LOCATION OF, OR THE EXISTENCE OR NON-EXISTENCE OF ANY UNDERGROUND UTILITY, PIPE, OR STRUCTURE WITHIN THE LIMITS OF THIS PROJECT. THIS NOTE APPLIES TO ALL SHEETS.

COUNTY OF LOS ANGELES, CALIFORNIA
 APPROVED, WILLIAM J. FOX, COUNTY ENGINEER
 BY W. J. Fox
 CHIEF DEPUTY
 APPROVED, A. M. RAWN
 CHIEF ENGR. CO. SAN. DIST. NO. 5
 BY A. M. Rawn
 ASST. OFFICE ENGINEER
 CHECKED BY: Richard C. Johnson 12-5-52
 OFFICE OF COUNTY ENGINEER, REG. C.E. No. 7260



INDEX MAP
 SCALE: 1" = 100'
 PC. 2497 UNF371

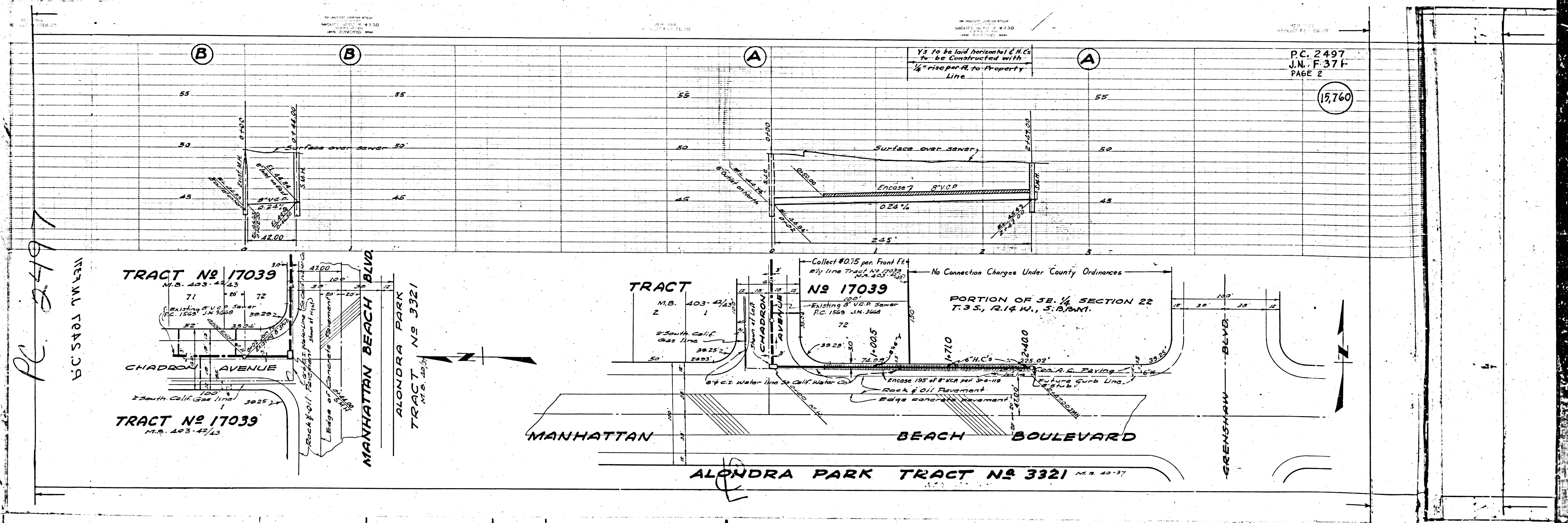
15,759

REC'D
 DEPT. OF PUBLIC WORKS
 COUNTY OF LOS ANGELES
 MANHATTAN BEACH DIST.
 N.V.F. 371
 P.C. 5431

Checked 1-28-53 McLaren

87W

15,760



PC 2497
V.C. 5405 7W 5311

TRACT No 17039
M.B. 403-42/43

TRACT No 17039
M.B. 403-42/43

TRACT No 17039
M.B. 403-42/43

ALONDRA PARK TRACT No 3321
M.B. 40-37

PORTION OF SE. 1/4 SECTION 22
T. 3 S., R. 14 W., S. B. 8 N. 1.