

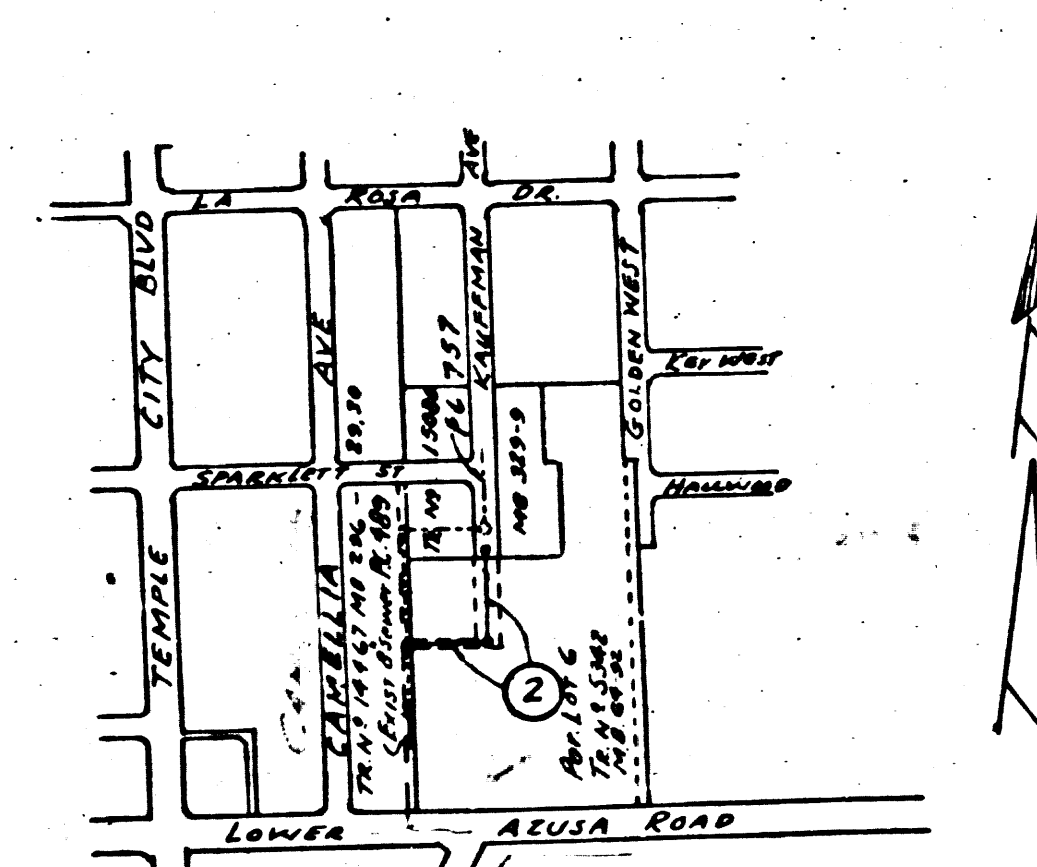
P.C. 2499
J.N.F. 373
PAGE 2

15,719

B.M. ROAD DEPT. S.G. 638 ELEV. 314.55'
A 4' T. IN N. CURB LOWER AZUSA RD. 1' W. OF E.R.
AT N.E. COR. LOWER AZUSA RD. & TEMPLE CITY
BLVD.

TEMPLE CITY

- NOTE:-
NO REPRESENTATIVE OF THE COUNTY ENGINEER WILL SURVEY OR LAY OUT ANY PORTION OF THE WORK.
THE OWNER OR HIS AUTHORIZED REPRESENTATIVE SHALL FURNISH THE COUNTY ENGINEER WITH GRADE SHEETS AND STATIONS FOR HOUSE CONNECTIONS AND Y BRANCHES AND SHALL PROVIDE STAKES FOR THEM AT THEIR PROPER LOCATIONS WITH STATIONING PLAINLY MARKED. ANY CHANGE IN LOCATION SHALL BE REQUESTED IN WRITING BY THE OWNER OR HIS REPRESENTATIVE. NO REVISIONS SHALL BE MADE IN THESE PLANS WITHOUT APPROVAL OF THE COUNTY ENGINEER.
1. USE STANDARD MANHOLE FRAMES AND COVERS, S-O-117.
 2. USE STANDARD STRENGTH PIPE EXCEPT AS NOTED.
 3. USE CEMENT MORTAR FOR ALL VITRIFIED CLAY PIPE JOINTS.
 4. RESURFACE ALL TRENCH WITHIN PAVED AREA TO MEET L.A. COUNTY ROAD DEPT. REQUIREMENTS.
 5. ENCASE FOUR FEET OF SEWER AT POINTS OF INTERFERENCE WITH PILES S-O-118.
 6. ~~ENCASE CURBS WITHIN 2' OF SEWER AT POINTS OF INTERFERENCE WITH PILES S-O-118.~~
 7. ALL STRUCTURES SHALL BE BUILT SEWER STRUCTURES, S-O-104.
 8. PROVIDE SPACES ON THE PROPERTY LINES OR PROPERTY LINES PRODUCED AT RIGHT ANGLES TO THE SEWER LINE AT THE CENTER OF EACH MANHOLE.
 9. STOPPERS TO BE INSTALLED WITH JOINT COMPOUND BY MANUFACTURER AT HIS PLANT, SPEC'S. SECTION 33, 48.
 10. INSTALL WIRE AND TAGS, SPEC'S. SECTION 48.
 11. MANHOLE TOPS IN UNIMPROVED RIGHT OF WAYS TO BE 6" IN ABOVE THE FINISHED GRADE OF THE GROUND AT THAT POINT.



INDEX MAP
Scale 1"=600'
P.C. 2499 J.N.F. 373

Checked by: *W. J. Fox* 12-31-52

PROFILE, ALIGNMENT AND GRADE OF
SANITARY SEWERS
TO BE CONSTRUCTED IN
SANITARY SEWER
RIGHT-OF-WAY

P.C. 2499 - J.N.F. 373
Page 1

15,728

PRIVATE CONTRACT NO 2499
W.S. 44
CONSISTING OF ONE SHEET
SCALE: VERT. 1"=4'
HORIZ. 1"=40'
DEC 1952

PREPARED IN THE OFFICE OF
KARL F. TUTTLE ENGINEERING COMPANY INC.
BY *Handwritten Signature* 12-31-52

FOR LEGEND SEE PLAN NO 5-a-64

NOTE:
GRADES TO WHICH THIS IMPROVEMENT IS TO BE CONSTRUCTED ARE SHOWN ON PLANS AND PROFILES. GRADE POINTS FOR TOP OF CURBS, CENTERLINE OF STREETS OR CENTERLINE OF ALLEY ARE SHOWN BY CIRCLES ON PROFILES. AT ALL POINTS BETWEEN DESIGNATED POINTS, THE GRADE SHALL BE ESTABLISHED SO AS TO CONFORM TO A STRAIGHT LINE DRAWN BETWEEN SAID DESIGNATED POINTS. ELEVATIONS ARE IN FEET ABOVE U.S.G.S. DATUM OR MEAN SEA LEVEL.
THIS DRAWING AND THE DATA HEREON ARE HEREBY MADE A PART OF THE SPECIFICATIONS. WORK SHALL BE CONSTRUCTED ACCORDING TO SPECIFICATIONS ON FILE IN THE OFFICE OF THE COUNTY ENGINEER AND SHALL BE PROSECUTED ONLY IN THE PRESENCE OF THE COUNTY ENGINEER. BEFORE WORK CAN BE STARTED THE CONTRACTOR MUST OBTAIN A PERMIT TO EXCAVATE IN COUNTY STREETS FROM THE L.A. COUNTY ROAD DEPARTMENT, 108 WEST 2ND STREET AND MAKE A DEPOSIT WITH THE COUNTY ENGINEER, 733 L.A. COUNTY ENGINEERING BUILDING SUFFICIENT TO COVER THE COST OF CONSTRUCTION INSPECTION AND RECORD PLANS.
APPROVAL OF THIS PLAN BY THE COUNTY OF LOS ANGELES DOES NOT CONSTITUTE A REPRESENTATION AS TO THE ACCURACY OF THE LOCATION OF OR THE EXISTENCE OR NON-EXISTENCE OF ANY UNDERGROUND UTILITY, PIPE OR STRUCTURE WITHIN THE LIMITS OF THIS PROJECT.

COUNTY OF LOS ANGELES
WILLIAM J. FOX, COUNTY ENGINEER - APPROVED A.M. RAWN
APPROVED BY *Handwritten Signature* CHIEF ENGR. OF SAN. DIST NO 15
BY *Handwritten Signature* CHIEF DEPUTY

CHECKED BY: *Handwritten Signature* 12-31-52
OFFICE OF COUNTY ENGINEER, REG. C.E. NO 6412

UC 10
12-16-52
R.S.

