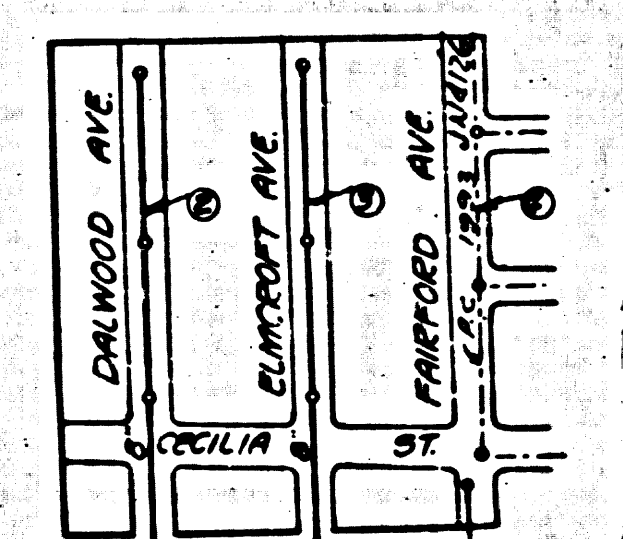


J.N.F.385  
SHEET 2

15,833

BELLFLOWER

B.M. 5-Y #1327 - 4" x 4" in Concrete Base of Westerly Brick Pier, Entrance to Paradise Memorial Park 1541 Florence Ave. 900' E. of Orr & Day Road.



TRACT NO. 18086  
SCALE 1"=400'  
SHEET 1 OF 1 SHEET  
PAGES 1 TO 4 INCL.  
R.C. 2509 J.N.F.385

- NOTE:  
NO REPRESENTATIVE OF THE COUNTY ENGINEER WILL SURVEY OR LAY OUT ANY PORTION OF THE WORK.  
THE SURVEY OF THIS AUTHORIZED REPRESENTATIVE SHALL FURNISH THE COUNTY ENGINEER WITH GRADE SHEETS AND STATIONING FOR ALL MAIN CONNECTIONS AND BRANCHES AND SHALL PROVIDE STATIONING FOR THEM AT THEIR PROPER LOCATIONS WITH STATIONING PLANS. UNLESS ANY CHANGE OF LOCATION SHALL BE REQUESTED IN WRITING BY THE OWNER OR HIS REPRESENTATIVE.  
NO REVISIONS SHALL BE MADE IN THESE PLANS WITHOUT APPROVAL OF THE COUNTY ENGINEER.
1. USE STANDARD MANHOLE FRAMES AND COVERS, 3'-0" DIA.
  2. USE STANDARD STRENGTH PIPE EXCEPT AS NOTED.
  3. USE GEMENT MORTAR FOR ALL VITRIFIED PIPE JOINTS.
  4. RESURFACE ALL TRENCH WITHIN PAVED AREAS TO MEET L.A. COUNTY ROAD DEPT. REQUIREMENTS.
  5. EXPOSE FOUR FEET OF SEWER AT JOINTS OF INTERFERENCE WITH POLES, 3'-0" DIA.
  6. HOUSE CONNECTIONS TO BE CONSTRUCTED WITH INVERT AT PROPERTY LINE 5 FEET BELOW CURB GRADE, EXCEPT AS NOTED.
  7. ALL STRUCTURES SHALL BE BRICK-SEWER STRUCTURES, 3'-0" DIA. PROVIDE STAKES ON THE PROPERTY LINES OR PROPERTY LINES PRODUCED AT RIGHT ANGLES TO THE SEWER LINE AT THE CENTER LINE OF EACH MANHOLE.
  8. STOPPERS TO BE INSTALLED WITH JOINT COMPOUND BY MANUFACTURER AT ALL JOINTS IN SEWER PIPE.
  9. CONNECTIONS BETWEEN SEWER PIPE SHALL BE 10 FEET DEPTH WITH 2 FEET OF COVER.
  10. CONNECTIONS BETWEEN SEWER PIPE SHALL BE 10 FEET DEPTH WITH 2 FEET OF COVER.
  11. DETAILS AS NOTED.

ENGINEERING SERVICE CORPORATION 1127 N. WASHINGTON BLVD. LOS ANGELES 15, CALIF. PR. 7291	
REVISIONS	
TRACED BY	_____
DESGD BY	_____
CHK'D BY	_____
SUBMITTED	_____
SUB STRUCTURES, R.D.	
W. O. NO.	DATE
6396-4	Dec. 1952
SCALE	L.P.F. 37

PROFILE ALIGNMENT AND GRADE OF  
**SANITARY SEWERS**  
TO BE CONSTRUCTED IN  
**TRACT NO. 18086**

R.C. 2509 J.N.  
PAGE-1

15,833

PRIVATE CONTRACT NO. 2509  
W. S. 33  
SHEET 1 OF 1 SHEETS  
NOV. 1952  
PREPARED IN THE OFFICES OF  
**ENGINEERING SERVICE CORPORATION**  
BY E. J. Ramsey  
1600 E. 11th ST.

RECEIVED  
FEB 9 1953  
L. A. COUNTY ENGINEER  
SANITATION DIVISION

FOR LEGEND  
SEE PLAN S.U. 54-64

NOTE:  
STAKES TO WHICH THIS IMPROVEMENT IS TO BE CONSTRUCTED ARE SHOWN ON PLANS AND PROFILES. COUNTY ENGINEER'S REPRESENTATIVE SHALL BE RESPONSIBLE FOR THE PROTECTION OF ALL STAKES SHOWN BY THIS PLAN. THE COUNTY ENGINEER'S REPRESENTATIVE SHALL BE RESPONSIBLE FOR THE PROTECTION OF ALL STAKES SHOWN BY THIS PLAN. THE COUNTY ENGINEER'S REPRESENTATIVE SHALL BE RESPONSIBLE FOR THE PROTECTION OF ALL STAKES SHOWN BY THIS PLAN.

RECORD PLANS  
THE PREPARATION OF THIS PLAN BY THE COUNTY ENGINEER DOES NOT CONSTITUTE A REPRESENTATION AS TO THE ACCURACY OF THE LOCATION OR THE EXISTENCE OR NON-EXISTENCE OF ANY UNDERGROUND UTILITY PIPE OR STRUCTURES WITHIN THE LIMITS OF THIS PROJECT. THIS NOTE APPLIES TO ALL SHEETS OF THIS PROJECT.

COUNTY OF LOS ANGELES, CALIFORNIA

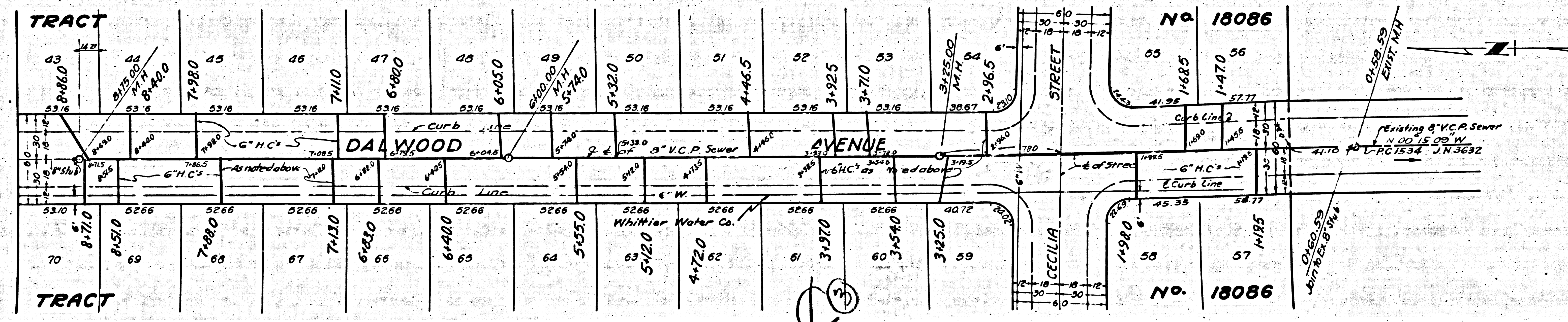
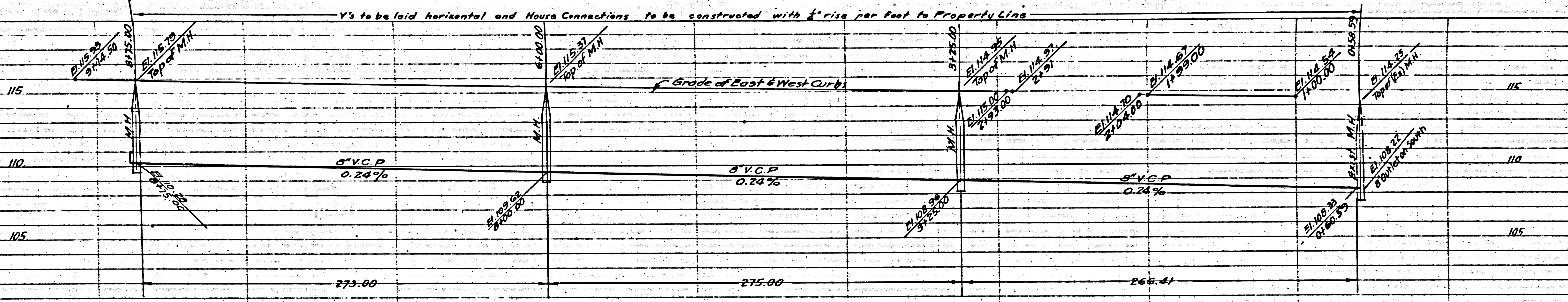
APPROVED BY J. W. Fox COUNTY ENGINEER  
APPROVED BY A. M. Rawm COUNTY ENGINEER OF COUNTY SANITATION DISTRICT NO. 18  
CHECKED BY Richard E. Kullback 12-11-52  
1600 E. 11th ST.

checked 2-13-53 W. J. Miller

V's to be laid horizontal and House Connections to be constructed with 4" rise per foot to Property Line

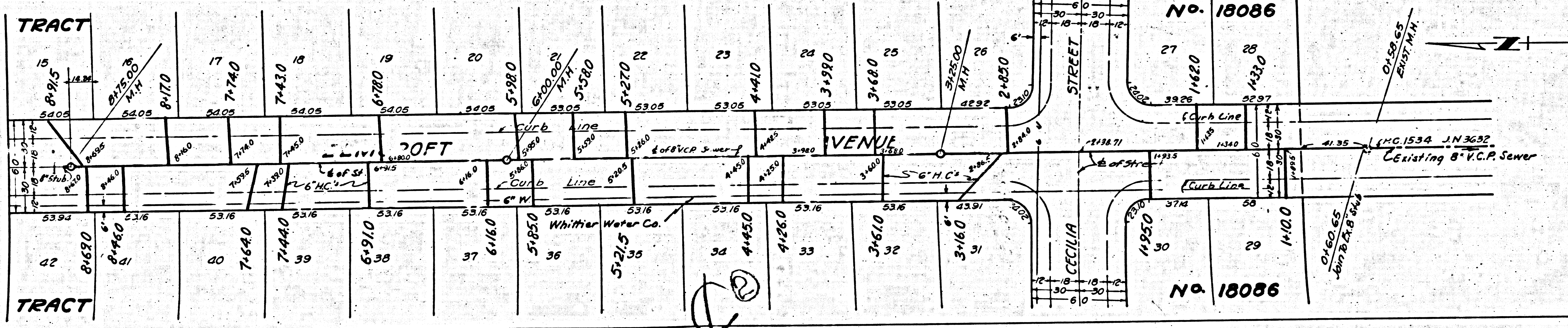
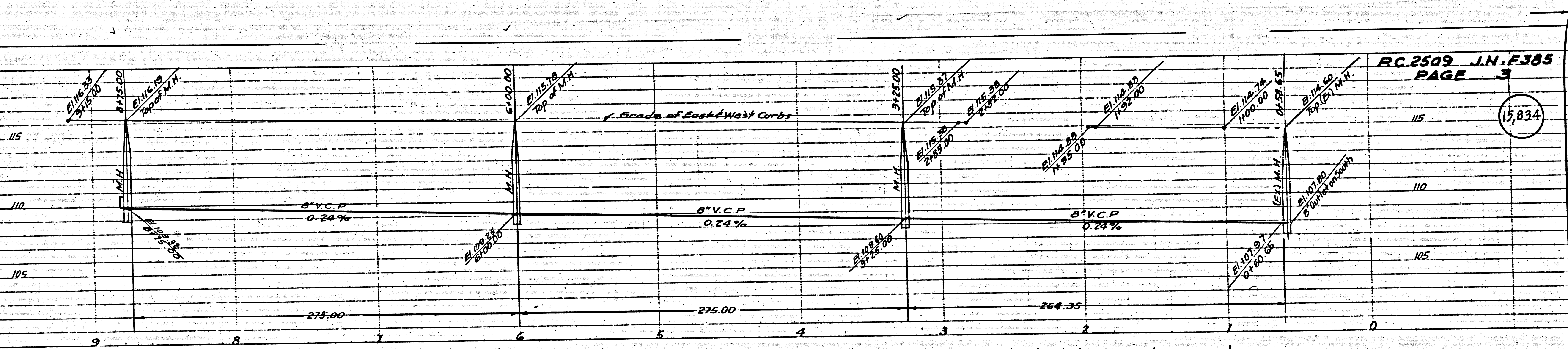
P.C. 2509 J.N.F.335  
PAGE 2

15,893



15

(15,834)



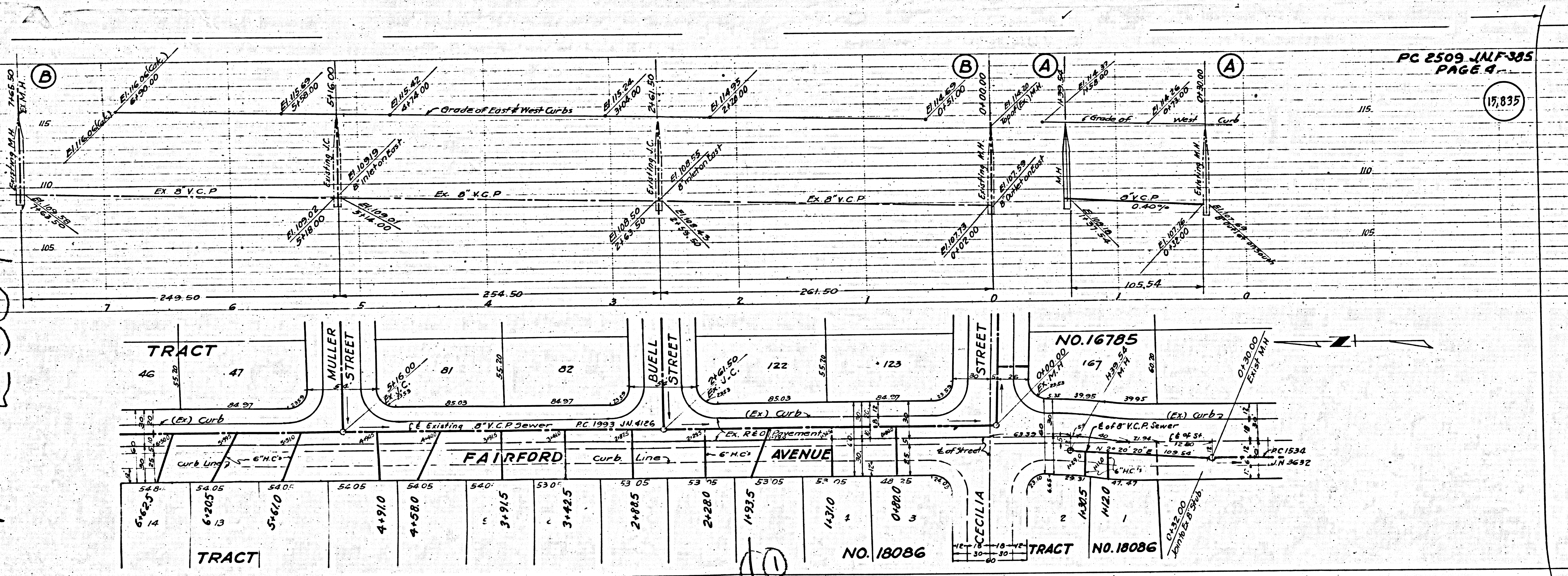
No. 18086

No. 18086

(2)

PC 2509

PLS 02



PC 2509 JNF-305  
PAGE 4

TRACT

TRACT

NO. 16785

NO. 18086

TRACT NO. 18086