

**BELLFLOWER**

B.M. No. S.V. 2504 Elev. 82.933  
 1/4 E. in South Curb of Rosecrans Ave,  
 1/4 East of Curb Return - S.E. corner  
 Rosecrans & Cabell Aves.

- NOTE:  
 1. NO REPRESENTATIVE OF THE COUNTY ENGINEER WILL SURVEY OR LAY OUT ANY PORTION OF THE WORK.  
 2. THE OWNER OR HIS AUTHORIZED REPRESENTATIVE SHALL FURNISH THE COUNTY ENGINEER WITH GRADE SHEETS AND STATIONS FOR ALL HOUSE CONNECTIONS AND Y BRANCHES AND SHALL PROVIDE STAKES FOR THEM AT THEIR PROPER LOCATIONS WITH STATIONING PLAINLY MARKED. ANY CHANGE OF LOCATION SHALL BE REQUESTED IN WRITING BY THE OWNER OR HIS REPRESENTATIVE.  
 3. NO REVISIONS SHALL BE MADE IN THESE PLANS WITHOUT APPROVAL OF THE COUNTY ENGINEER.  
 4. USE STANDARD MANHOLE FRAMES AND COVERS, S-111.  
 5. USE STANDARD STRENGTH PIPE EXCEPT AS NOTED.  
 6. USE CEMENT MORTAR FOR ALL WITHIN-CURB JOINTS.  
 7. RESURFACE ALL TRENCH WITHIN PAVED AREA TO MEET L.A. COUNTY ROAD DEPT. REQUIREMENTS.  
 8. ENCASE FOUR FEET OF SEWER AT POINTS OF INTERFERENCE WITH POLES, S-111.  
 9. HOUSE CONNECTIONS TO BE CONSTRUCTED WITH INVERT AT PROJECTED LINE 5 FEET BELOW CURB GRADE.  
 10. ALL STRUCTURES SHALL BE BRICK SEWER STRUCTURES S-104.  
 11. PROVIDE STAKES ON THE PROPERTY LINES OR PROPERTY LINES PRODUCED AT RIGHT ANGLES TO THE SEWER LINE AT THE CENTER LINE OF EACH MANHOLE.  
 12. STOPPERS TO BE INSTALLED WITH JOINT COMPOUND BY MANUFACTURER AT HIS PLANT. SPEC. SEC. 33-48.  
 13. CONCRETE THICKNESS TO BE NOT LESS THAN 2" IN DEPTH WITH CONCRETE SAW. SPEC. SEC. 65.

PROFILE, ALIGNMENT AND GRADE OF  
**SANITARY SEWERS**  
 TO BE CONSTRUCTED IN  
**TRACT No. 18120**

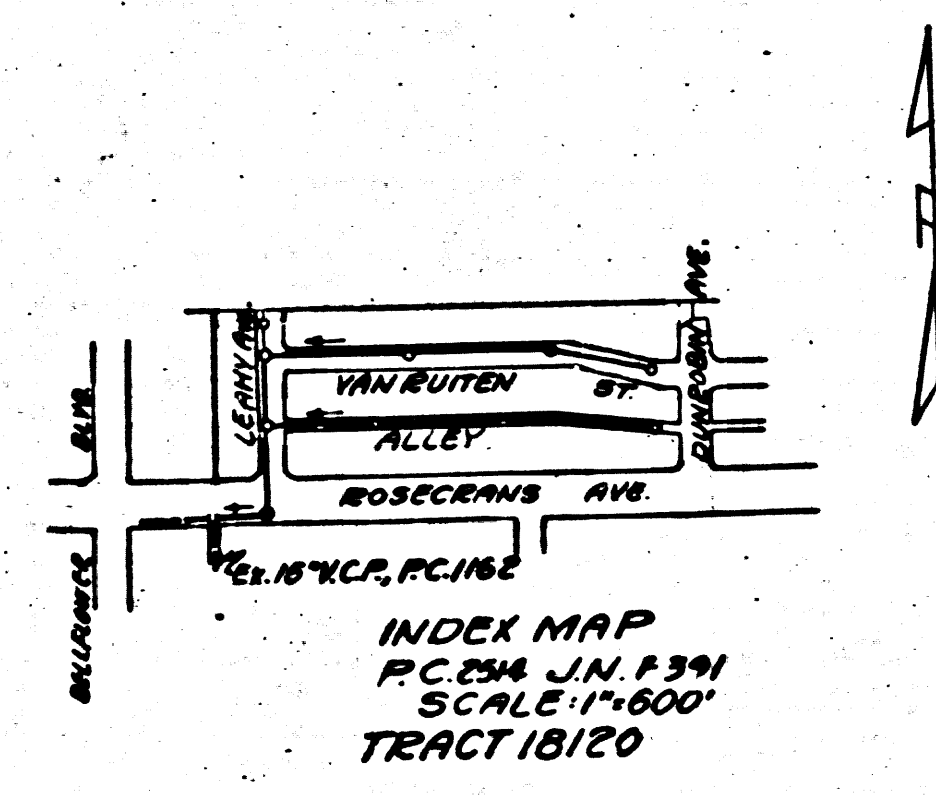
PC. 2514  
 J.N.F. 391  
 PAGE 1

(16,175)

PRIVATE CONTRACT NO. 2514  
 W. S. 33  
 SHEET 1 OF 11 SHEETS  
 SCALE: VERT. 1" = 4' HOR. 1" = 40'  
 DEC. 1952  
 PREPARED IN THE OFFICES OF  
 C.E. YOST  
 BY *G.E. Malt*  
 C.E. No. 3267  
 FOR LEGEND SEE PLAN 3-a-64

NOTE:  
 GRADES TO WHICH THIS IMPROVEMENT IS TO BE CONSTRUCTED ARE SHOWN ON PLANS AND PROFILES. GRADE POINTS FOR TOP OF CURB, CENTER LINE OF STREETS, OR CENTER LINE OF ALLEY ARE SHOWN BY CIRCLES ON PROFILES. AT ALL POINTS BETWEEN DESIGNATED POINTS THE GRADE SHALL BE ESTABLISHED SO AS TO CONFORM TO A STRAIGHT LINE DRAWN BETWEEN SAID DESIGNATED POINTS. ELEVATIONS ARE IN FEET ABOVE U.S.G.S. DATUM OR MEAN SEA LEVEL.  
 THIS DRAWING AND THE DATA HEREON ARE HEREBY MADE A PART OF THE SPECIFICATIONS.  
 WORK SHALL BE CONSTRUCTED ACCORDING TO SPECIFICATIONS ON FILE IN THE OFFICE OF THE COUNTY ENGINEER AND SHALL BE PROSECUTED ONLY IN THE PRESENCE OF THE COUNTY ENGINEER.  
 BEFORE WORK CAN BE STARTED THE CONTRACTOR MUST OBTAIN A PERMIT TO EXCAVATE IN COUNTY STREETS FROM THE L.A. COUNTY ROAD DEPT. 211 SO MAIN ST. AND MAKE A DEPOSIT WITH THE COUNTY ENGINEER, 828 COUNTY ENGINEERING BUILDING SUFFICIENT TO COVER THE COST OF CONSTRUCTION INSPECTION AND RECORD PLANS.  
 APPROVAL OF THIS PLAN BY THE COUNTY OF LOS ANGELES DOES NOT CONSTITUTE A REPRESENTATION AS TO THE ACCURACY OF, OR THE EXISTENCE OR NON-EXISTENCE OF, ANY UNDERGROUND UTILITY, PIPE, OR STRUCTURE WITHIN THE LIMITS OF THIS PROJECT.

COUNTY OF LOS ANGELES, CALIFORNIA  
 WILLIAM J. FOX COUNTY ENGINEER  
 APPROVED BY *W. J. Fox*  
 CHIEF DEPUTY  
 A. M. RAWN CHIEF ENGINEER OF COUNTY SANITATION DISTRICT NO. 2  
 APPROVED BY *A. M. Rawn*  
 OFFICE ENGINEER  
 CHECKED BY *Richard E. Kuhn* 12-18-52  
 OFFICE OF COUNTY ENGINEER, BLDG. 8, PG. 78-60



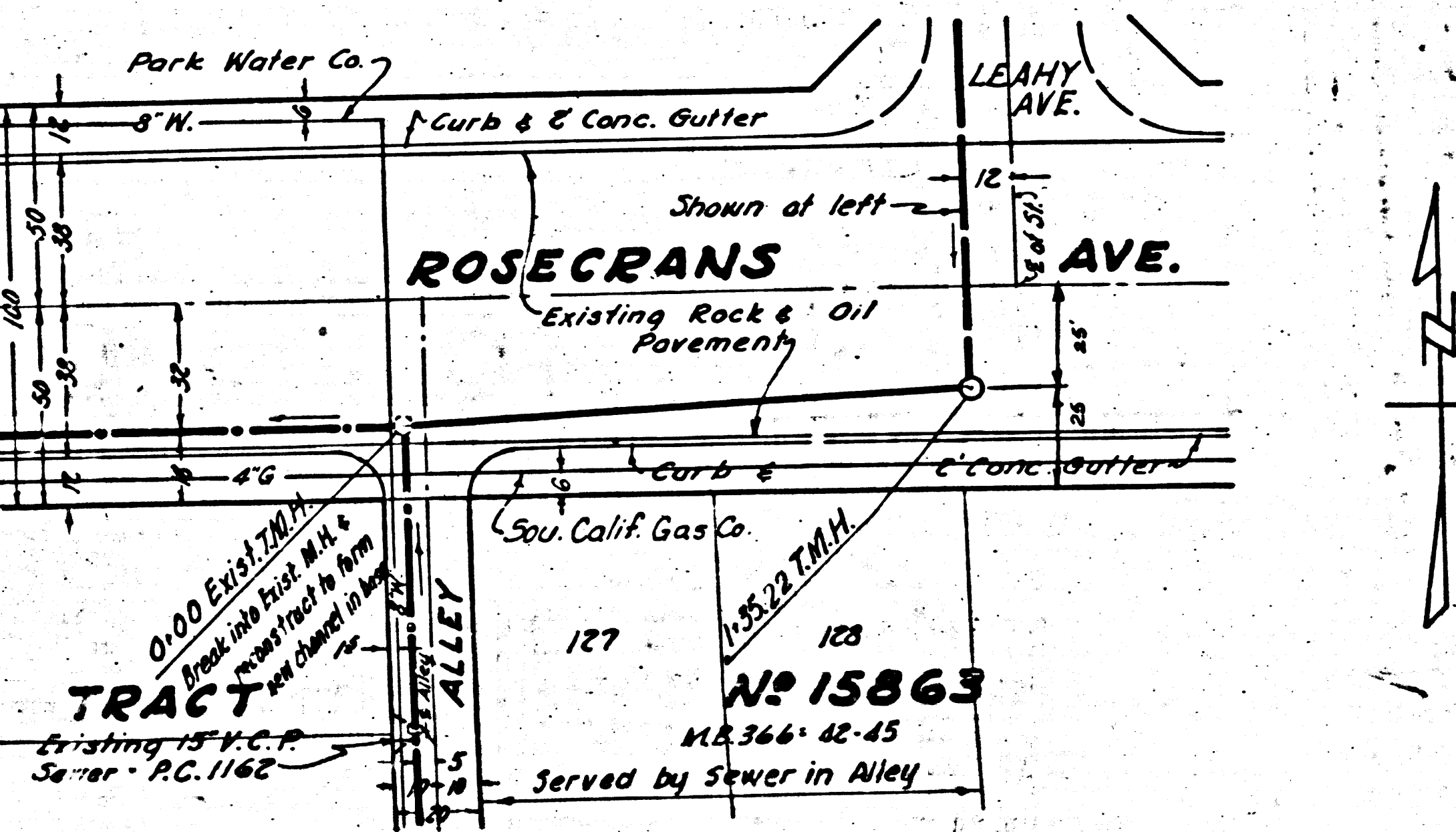
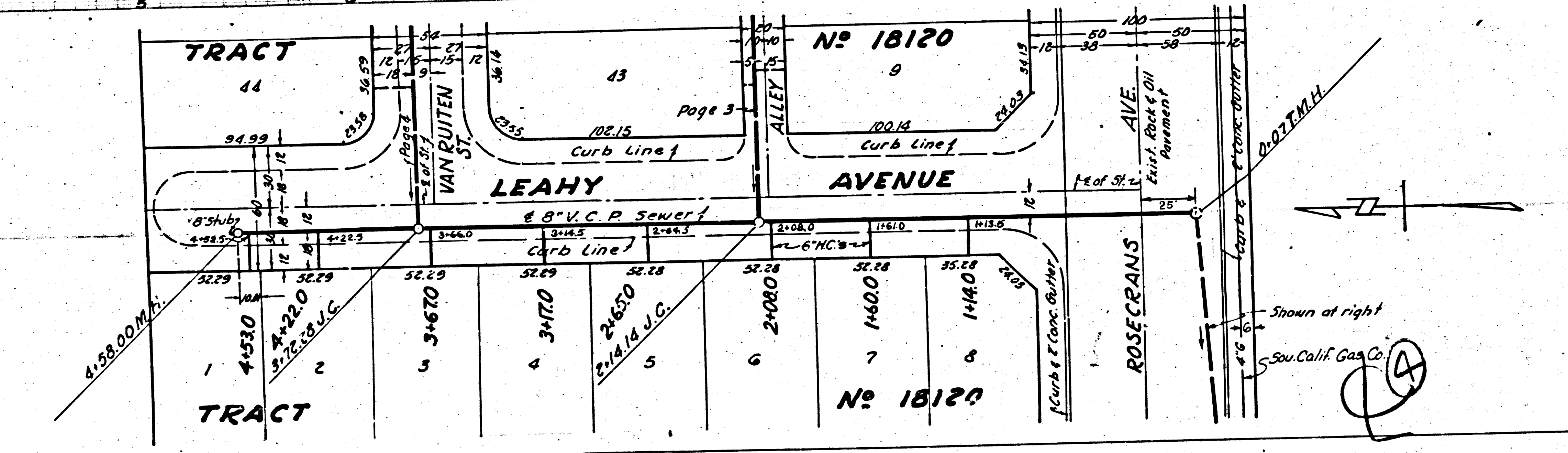
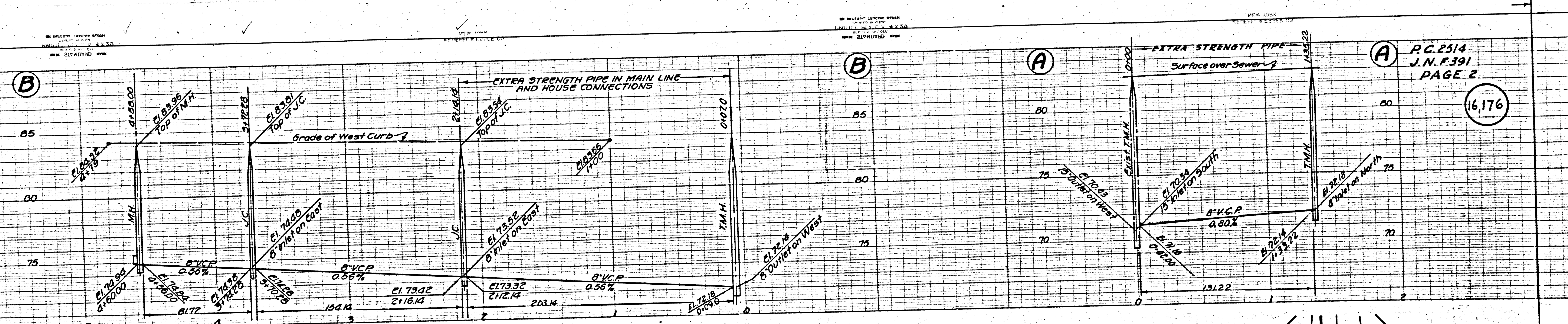
UB. OK  
 12-18-52  
 K.S.

(5)

Checked 4-30-53 *K. J. ...*

Trim Line

SAN SEWER 2  
 TRACT 18120  
 18120



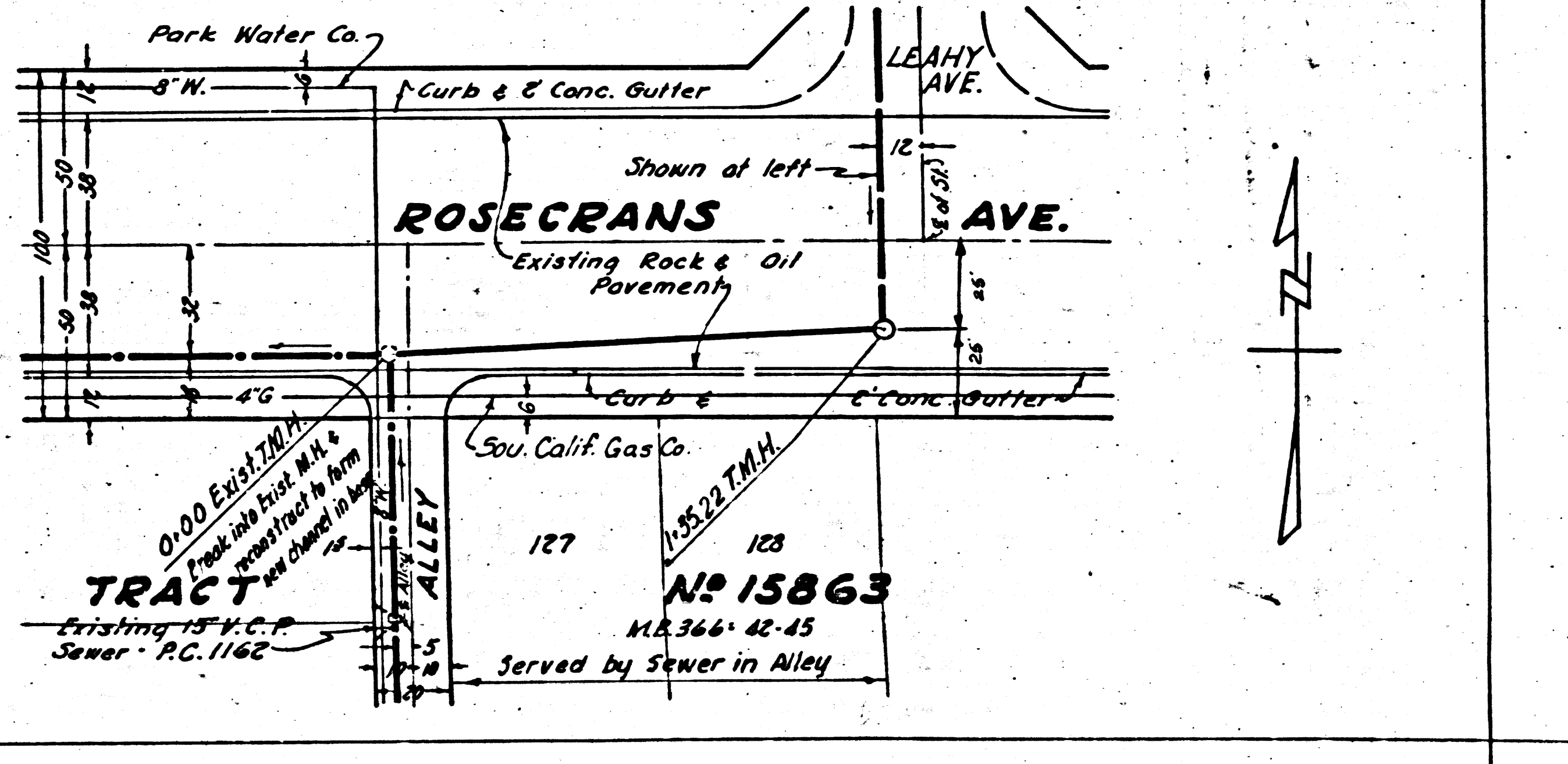
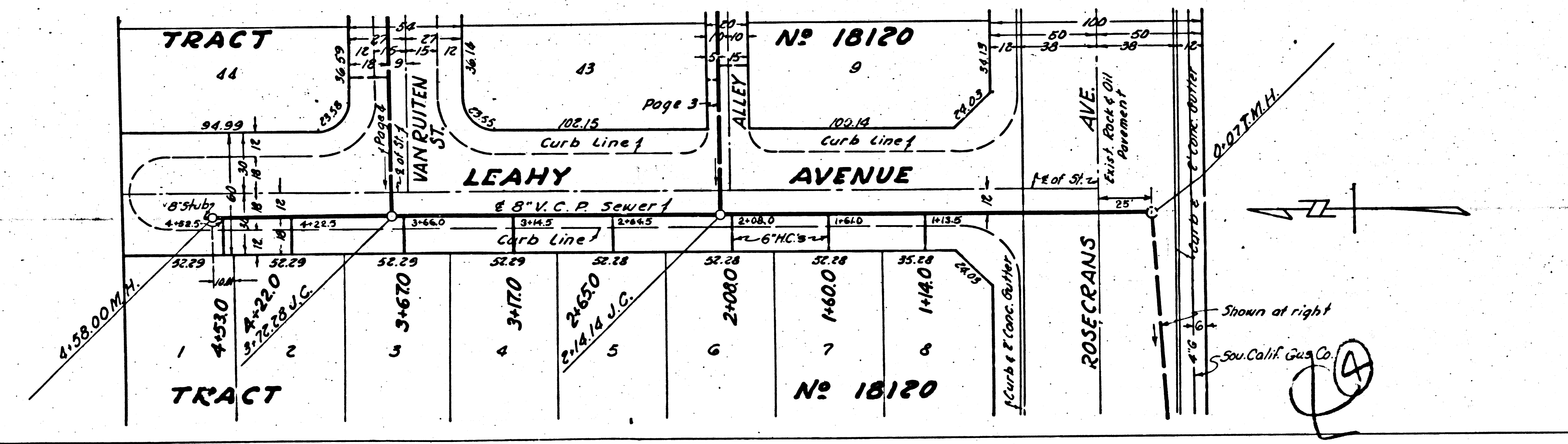
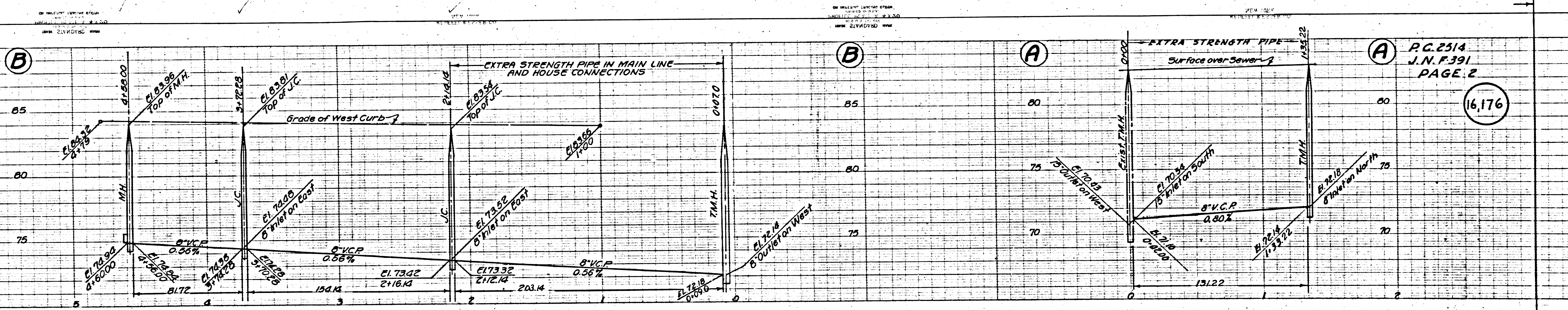
P.C. 2514  
J.N.P. 391  
PAGE 2

16,176

B.M. No.  
LET. 15  
11 East  
E 5000

Shown at right  
Sou. Calif. Gas Co.

0100 EXH. 7000  
127  
123  
N<sup>o</sup> 15863  
M.S. 366-42-45  
Served by Sewer in Alley



P.C. 2514  
J.N.F. 391  
PAGE 2

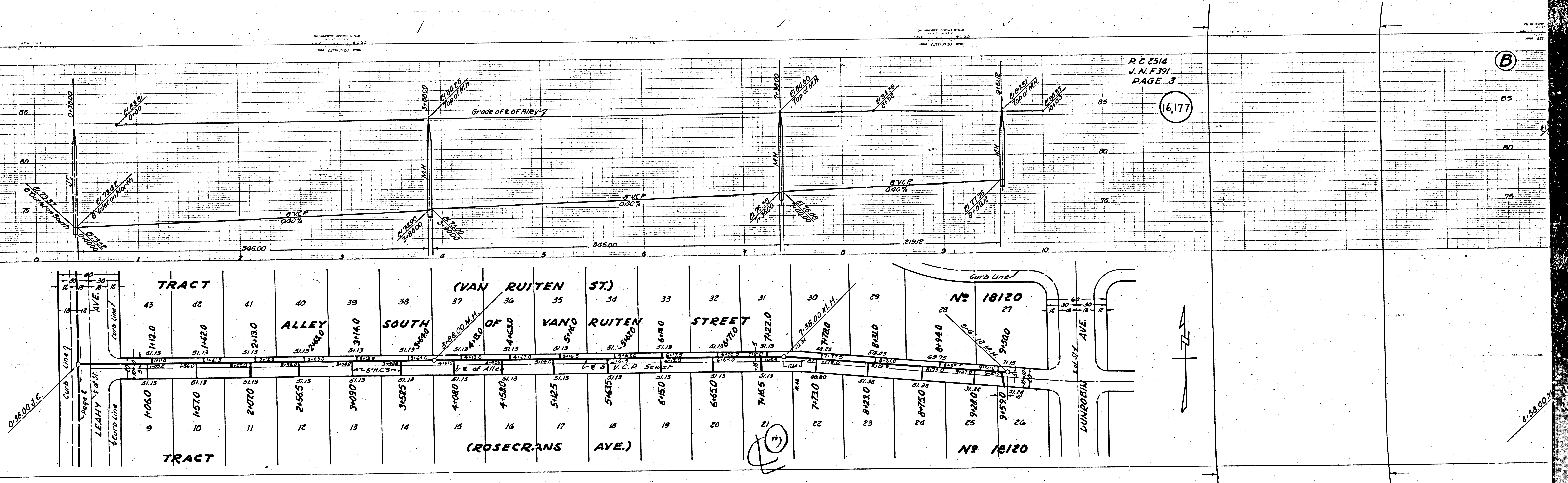
16,176

B.M. No. 111  
1/2 Cor. Rosecrans

P.C. 2514  
J.N. F. 391  
PAGE 3

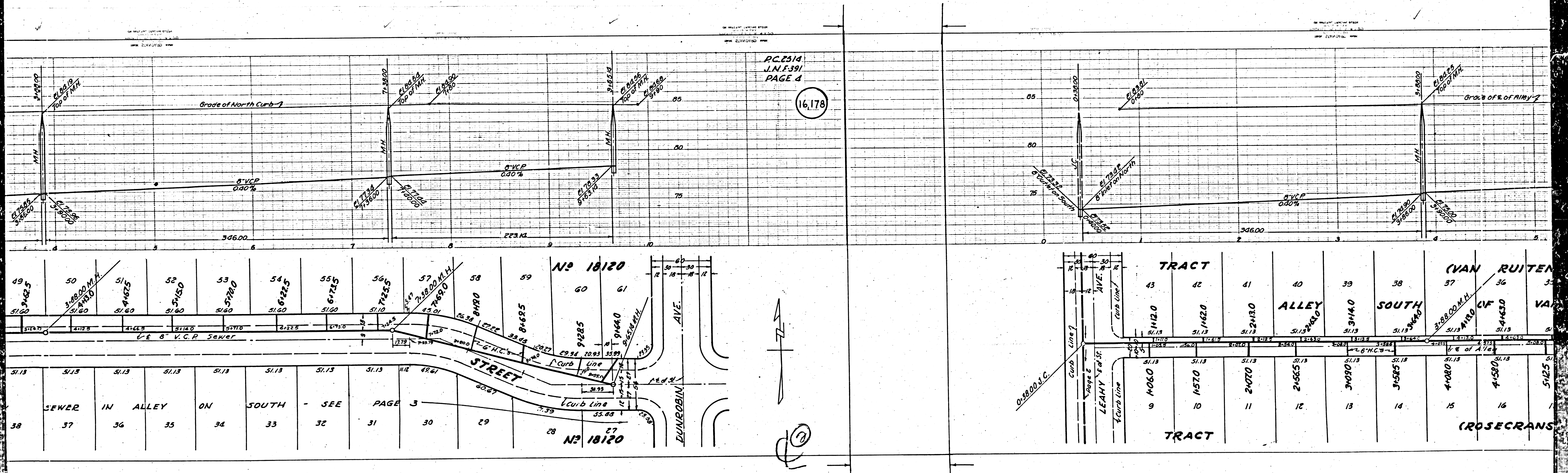
16,177

(B)



PC 2514  
J.N.E.391  
PAGE 4

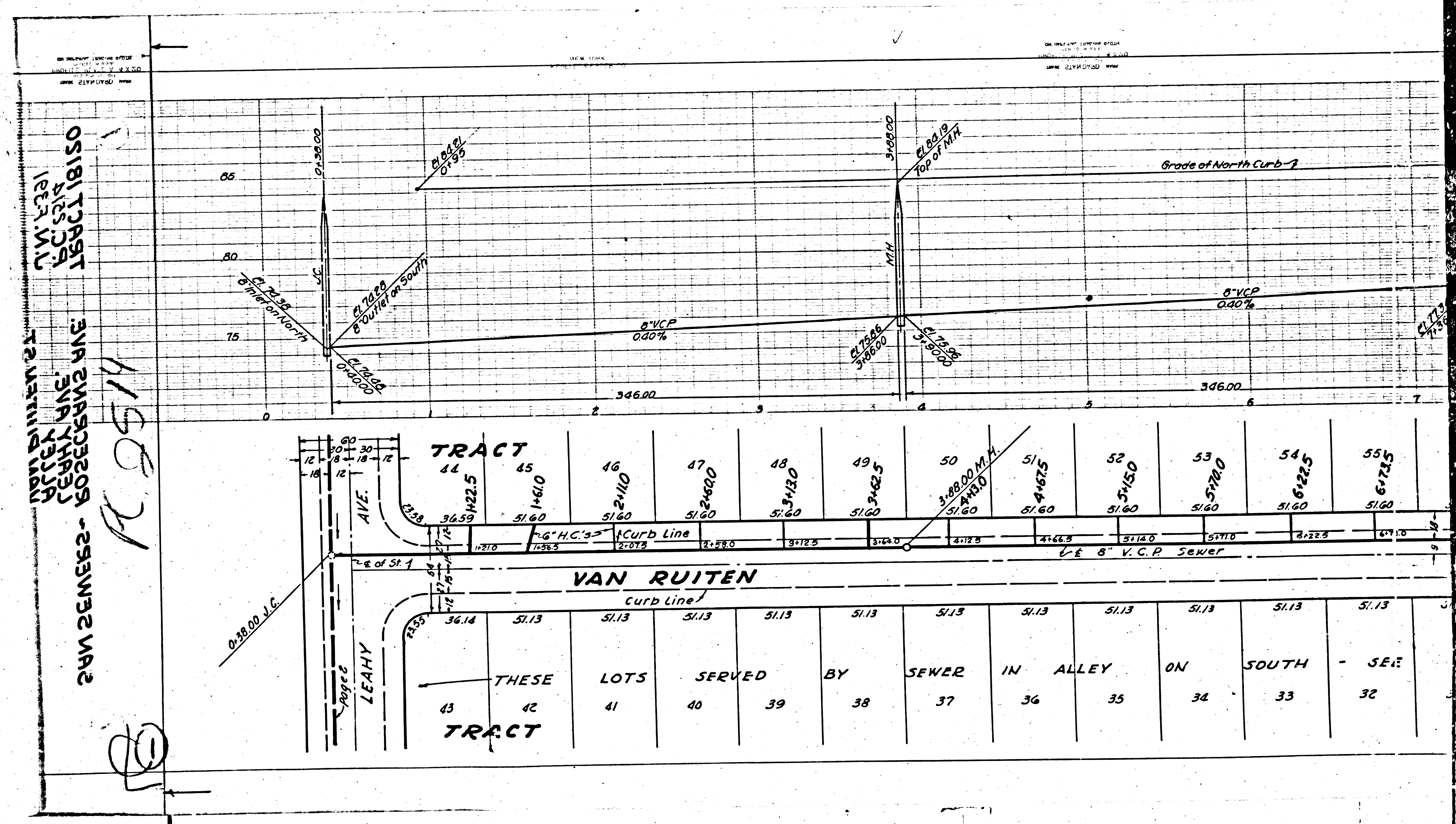
16,178



Tract No.	Area	Owner
49	3-48.5	
50	3-48.00 M.H.	
51	4-67.5	
52	3-45.0	
53	5-78.0	
54	6-22.5	
55	6-72.5	
56	7-22.5	
57	7-38.00 M.H.	
58	7-49.0	
59	8-48.5	
60	9-28.5	
61	9-44.0	
62	10-28.5	
63	11-28.5	
64	12-28.5	
65	13-28.5	
66	14-28.5	
67	15-28.5	
68	16-28.5	
69	17-28.5	
70	18-28.5	
71	19-28.5	
72	20-28.5	
73	21-28.5	
74	22-28.5	
75	23-28.5	
76	24-28.5	
77	25-28.5	
78	26-28.5	
79	27-28.5	
80	28-28.5	
81	29-28.5	
82	30-28.5	
83	31-28.5	
84	32-28.5	
85	33-28.5	
86	34-28.5	
87	35-28.5	
88	36-28.5	
89	37-28.5	
90	38-28.5	
91	39-28.5	
92	40-28.5	
93	41-28.5	
94	42-28.5	
95	43-28.5	
96	44-28.5	
97	45-28.5	
98	46-28.5	
99	47-28.5	
100	48-28.5	

SEWER IN ALLEY ON SOUTH - SEE PAGE 3

SEWER IN ALLEY ON SOUTH - SEE PAGE 3



OSIBI TRACT  
 41-55  
 VAN RUITEN  
 41-55  
 LEAHY AVE.

115671

18

41	42	43	44	45	46	47	48	49	50	51	52	53	54	55
36.59	36.59	36.59	36.59	36.59	36.59	36.59	36.59	36.59	36.59	36.59	36.59	36.59	36.59	36.59
51.60	51.60	51.60	51.60	51.60	51.60	51.60	51.60	51.60	51.60	51.60	51.60	51.60	51.60	51.60
51.13	51.13	51.13	51.13	51.13	51.13	51.13	51.13	51.13	51.13	51.13	51.13	51.13	51.13	51.13

THESE LOTS SERVED BY SEWER IN ALLEY ON SOUTH SIDE

41 40 39 38 37 36 35 34 33 32