

BELFLOWER

1. USE STANDARD MANHOLE FRAME AND COVER, 5-a-117.
2. USE STANDARD STRENGTH PIPE.
3. USE CEMENT MORTAR FOR ALL VITRIFIED CLAY PIPE JOINTS.
4. ENCASE FOUR FEET OF SEWER AT POINTS OF INTERFERENCE WITH POLES AS PER 5-a-119.
5. ALL STRUCTURES SHALL BE BRICK-SEWER STRUCTURES, 5-a-104.
6. CONSTRUCT TOPS OF ALL STRUCTURES IN RIGHTS OF WAY 6" ABOVE FINISHED GRADE.
7. FOR ALLOWABLE LEAKAGE TEST USE FORMULA N° 1, SPEC'S SEC. 51.

Approval of this plan by the County of Los Angeles does not constitute a representation as to the accuracy of the location of, or the existence or non-existence of, any underground utility, pipe, or structure within the limits of this project (this note applies to all sheets).

NOTE: NO REPRESENTATIVE OF THE COUNTY ENGINEER WILL SURVEY OR LAY OUT ANY PORTION OF THE WORK. THE OWNER OR HIS AUTHORIZED REPRESENTATIVE SHALL FURNISH THE COUNTY ENGINEER WITH GRADE SHEETS AND STATIONS OF ALL HOUSE CONNECTIONS AND Y BRANCHES AND SHALL PROVIDE STAKES FOR THEM AT THEIR PROPER LOCATIONS WITH STATIONING PLAINLY MARKED. ANY CHANGE OF LOCATION SHALL BE REQUESTED IN WRITING BY THE OWNER OR HIS REPRESENTATIVE. NO REVISIONS SHALL BE MADE IN THESE PLANS WITHOUT APPROVAL OF THE COUNTY ENGINEER.

PROFILE, ALIGNMENT AND GRADE OF
SANITARY SEWERS
 TO BE CONSTRUCTED IN
SANITARY SEWER RIGHT OF WAY
 IN LOT 45, TRACT N° 8084, M.B. 171/24-30

P.C. 2522 J.N. F398
 Page 1.

16,329

PRIVATE CONTRACT NO. 2522
 W.S. 30
 SHEET 1 OF 1 SHEET

DECEMBER 1952

PREPARED IN THE OFFICES OF

W.L. BANGHAM SUBDIVISION ENGINEERING CO.

BY: *W.L. Bangham*
 REG. C.E. N° 5819

FOR LEGEND
 SEE PLAN NO. 5-a-64

NOTE: GRADES TO WHICH THIS IMPROVEMENT IS TO BE CONSTRUCTED ARE SHOWN ON PLANS AND PROFILE. GRADE POINTS FOR TOP OF CURB, CENTER LINE OF STREET OR CENTER LINE OF ALLEY ARE SHOWN BY CIRCLES ON PROFILES. AT ALL POINTS BETWEEN DESIGNATED POINTS THE GRADE SHALL BE ESTABLISHED SO AS TO CONFORM TO A STRAIGHT LINE DRAWN BETWEEN SAID DESIGNATED POINTS. ELEVATIONS ARE IN FEET ABOVE U. S. G. S. DATUM OR MEAN SEA LEVEL. THIS DRAWING AND THE DATA HEREON ARE HEREBY MADE A PART OF THE SPECIFICATIONS. WORK SHALL BE CONSTRUCTED ACCORDING TO SPECIFICATIONS ON FILE IN THE OFFICE OF THE COUNTY ENGINEER AND SHALL BE PROSECUTED ONLY IN THE PRESENCE OF THE COUNTY ENGINEER. BEFORE WORK CAN BE STARTED, THE CONTRACTOR MUST OBTAIN A PERMIT TO EXCAVATE IN COUNTY STREET 3 FROM THE L.A. COUNTY ROAD DEPT. ON WEST SECOND STREET, AND MAKE A DEPOSIT WITH THE COUNTY ENGINEER, 104 WEST SECOND STREET, SUFFICIENT TO COVER THE COST OF CONSTRUCTION INSPECTION AND RECORD PLANS. IF WORK IS TO BE DONE IN A STATE HIGHWAY, A PERMIT MUST BE OBTAINED FROM THE STATE OF CALIFORNIA, DIVISION OF HIGHWAYS, 150 SOUTH SPRING STREET AFTER MAKING THE REPORT WITH THE COUNTY ENGINEER.

COUNTY OF LOS ANGELES, CALIFORNIA.

WILLIAM J. ... COUNTY ENGINEER

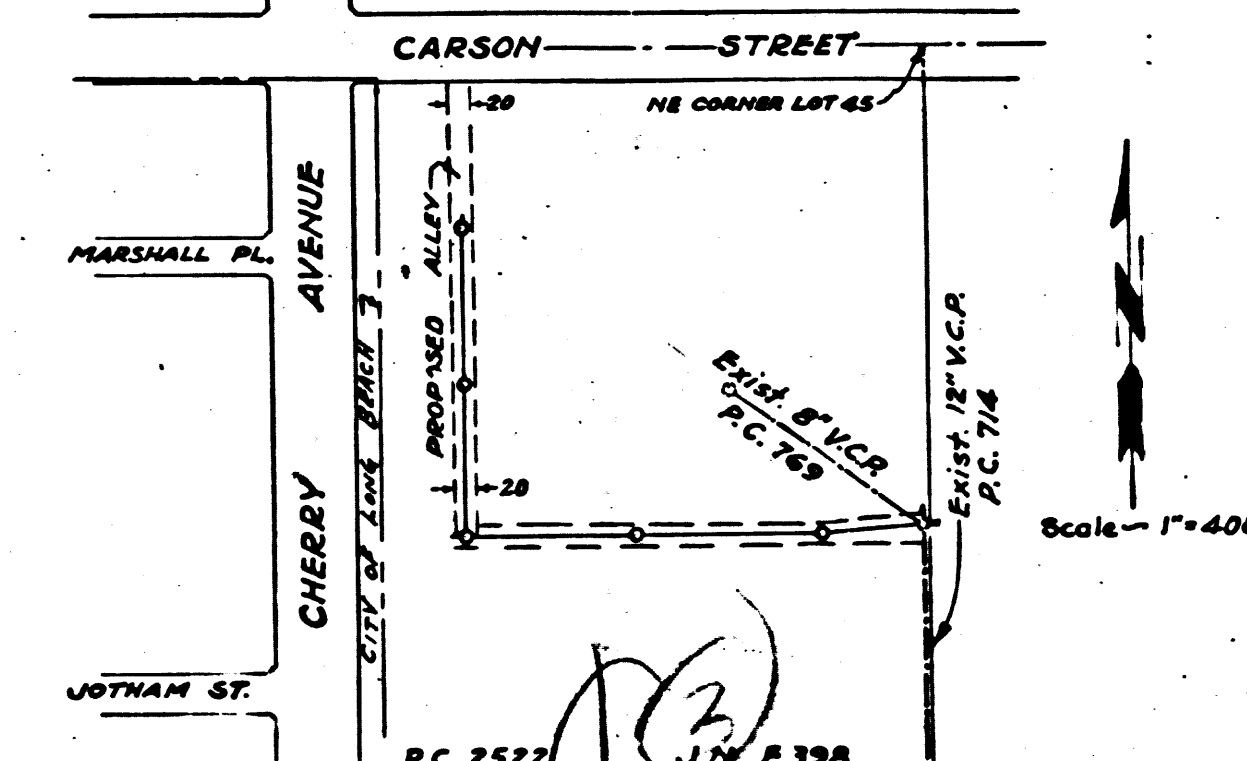
APPROVED BY: *[Signature]* CHIEF DEPUTY

A. H. BAIN OFFICE ENG.

APPROVED BY: *[Signature]* CHIEF ENGINEER OF COUNTY SANITATION DISTRICT NO. 3

CHECKED BY: *H.L. ...* 1-30-1952
 OFFICE OF COUNTY ENGINEER, 150 S. SPRING ST., LOS ANGELES, CALIF.

INDEX MAP



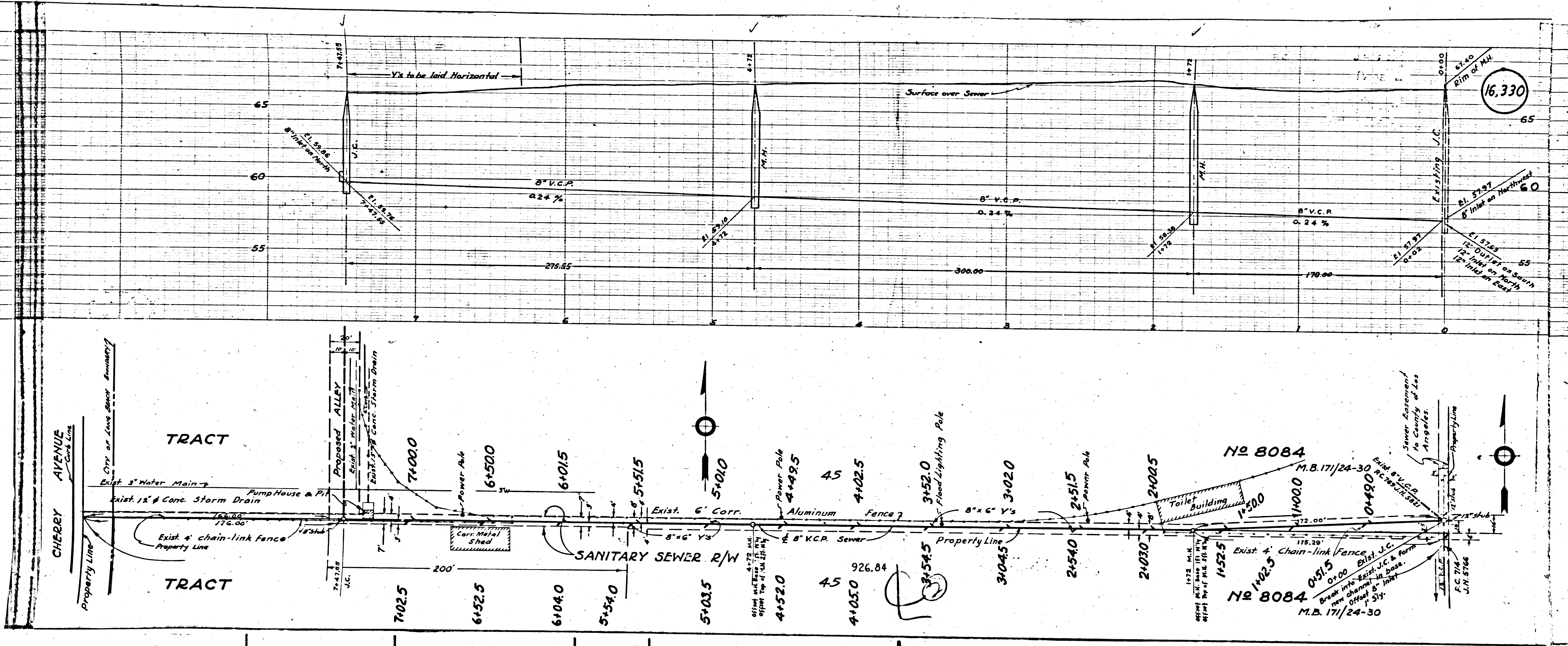
B.M. P.C. 18714 = Elev. 59.85'
 Top of brass cap M.L. Co. Mon., at SE cor. of Lot 46, Tract 8084, S 1/4 S 3' E of M.M. of 37e, 0420.

B.C. 5225

N.W. 5398

RECEIVED
 APR 6 1953
 L.A. COUNTY ENGINEER
 SANITATION DIVISION

B.C. 5225

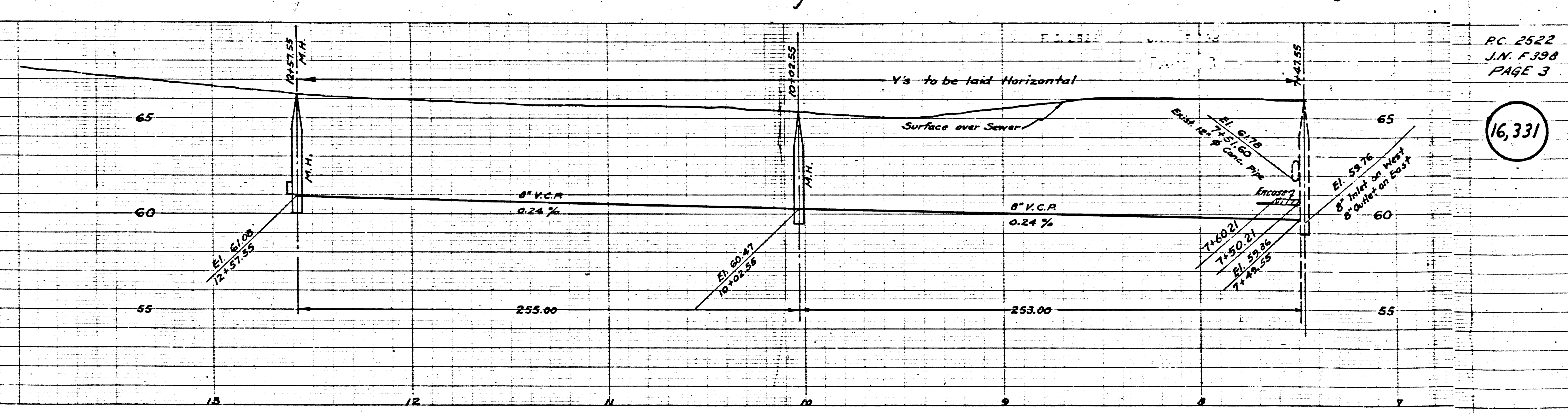


PC 2522
 J.N. F. 398
 PAGE 2

16.330

No 8084
 M.B. 17/24-30

No 8084
 M.B. 17/24-30



P.C. 2522
J.M. F. 398
PAGE 3

(16,331)

