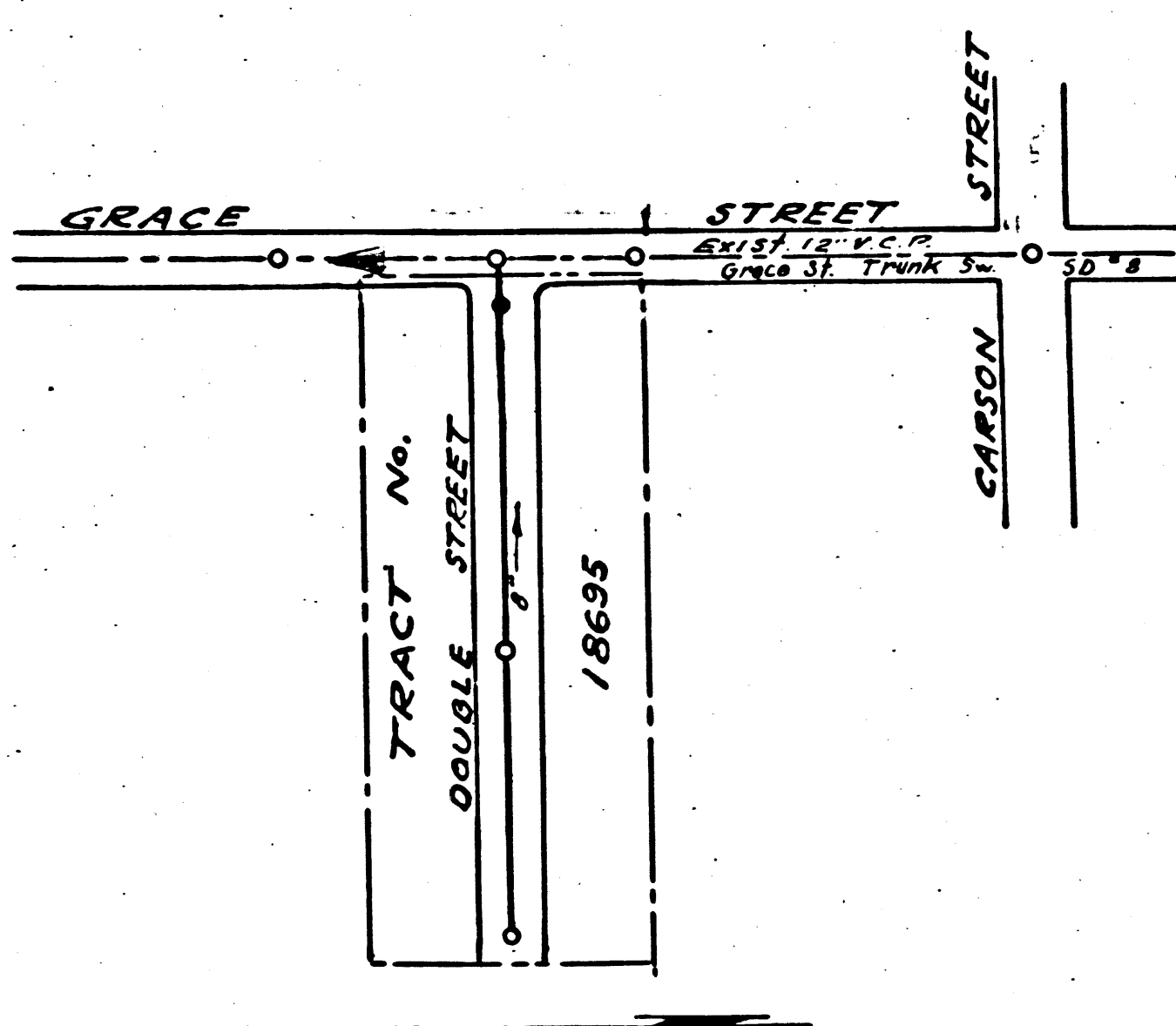


LOMITA

Trim line



INDEX MAP
scale 1" = 200'
P.C. 2531 U.N. F. 410

- NOTE:** NO REPRESENTATIVE OF THE COUNTY ENGINEER WILL SURVEY OR LAY OUT ANY PORTION OF THE WORK.
THE OWNER OR HIS AUTHORIZED REPRESENTATIVE SHALL FURNISH THE COUNTY ENGINEER WITH GRADE SHEETS AND STATIONS FOR ALL HOUSE CONNECTIONS AND Y BRANCHES AND SHALL PROVIDE STAKES FOR THEM AT THEIR PROPER LOCATIONS WITH STATIONING PLAINLY MARKED. ANY CHANGE IN LOCATION SHALL BE REQUESTED IN WRITING BY THE OWNER OR HIS REPRESENTATIVE.
NO REVISIONS SHALL BE MADE IN THESE PLANS WITHOUT APPROVAL OF THE COUNTY ENGINEER.
1. USE STANDARD MANHOLE FRAMES & COVERS, 5'-8" - 11", EXCEPT AS NOTED
 2. USE STANDARD STRENGTH PIPE EXCEPT AS NOTED.
 3. USE CEMENT MORTAR FOR ALL VITRIFIED CLAY PIPE JOINTS.
 4. RESURFACE ALL TRENCH WITHIN PAVED AREA TO MEET L.A. COUNTY ROAD DEPT. REQUIREMENTS.
 5. ENCASE FOUR FEET OF SEWER AT POINTS OF INTERFERENCE WITH POLES 5'-8" - 11" HOUSE CONNECTIONS TO BE CONSTRUCTED WITH INVERTS AT PROPERTY LINE 5' FEET BELOW CURB GRADE.
 6. ALL STRUCTURES SHALL BE BRICK SEWER STRUCTURES, 5'-8" - 11", EXCEPT AS NOTED
 7. PROVIDE STAKES ON THE PROPERTY LINES OR PROPERTY LINES PRODUCED AT RIGHT ANGLES TO THE SEWER LINES AT THE CENTER LINE OF EACH MANHOLE STOPPERS TO BE INSTALLED WITH JOINT COMPOUND BY MANUFACTURER AT HIS PLANT, SPEC'S SEC. 33, 48.
 8. CONCRETE PAVEMENT TO BE CUT NOT LESS THAN 2" IN DEPTH WITH CONCRETE SAW. SPEC'S SEC. 65
 9. INSTALL WIRE AND TAGS SPEC'S SEC. 48.

BENCH MARK
S.Y. 499 Elev. 84.223
6 1/2" in concrete walk ± 60' south
E. of Carson Street ± 25' East of
Grace Street

before breaking into any existing structure
and before final acceptance of this work,
County Sanitation District should be notified
in order that required inspection may be made.

APPROVED, WILLIAM J. FOX, COUNTY ENGINEER
BY: *W. J. Gregory*
CHIEF DEPUTY

APPROVED, A.M. RAWN,
CHIEF ENGR. CO. PLAN, DIST. NO. 8
BY: *A.M. Rawn*
OFFICE ENGINEER

CHECKED BY: *Richard E. Kishner* 1-15-53
OFFICE OF COUNTY ENGINEER, REG. C.E. No. 7860
Revised: 4-23-53 *P. Kishner*

Checked 5-15-53 M. Rawn

Trim line

P.C. 2531-U.N. F. 410
**PROFILE, ALIGNMENT AND GRADE OF
SANITARY SEWERS**
TO BE CONSTRUCTED IN
TRACT No. 18695

Page 1.

16,332

PRIVATE CONTRACT No. 2531
W. S. No. 28

SHEET 1 OF 1 SHEET

SCALE: HORIZ. 1" = 40'
VERT. 1" = 4' DEC. 1952

PREPARED IN THE OFFICES OF:
BARCLAY SURVEYING COMPANY,
474 N. HAWTHORNE BLVD.,
HAWTHORNE, CALIFORNIA.

By: *W. J. Sale* 12/29/52
E.C.E. No. 1137

FOR LEGEND SEE PLAN NO. S-8-64

NOTE: GRADES TO WHICH THIS IMPROVEMENT IS TO BE CONSTRUCTED ARE SHOWN ON PLANS AND PROFILES GRADE POINTS FOR TOP OF CURBS, CENTER LINE OF STREETS, OR CENTER LINE OF ALLEY ARE SHOWN BY CIRCLES ON PROFILES AT ALL POINTS BETWEEN DESIGNATED POINTS THE GRADE SHALL BE ESTABLISHED SO AS TO CONFORM TO A STRAIGHT LINE DRAWN BETWEEN SAID DESIGNATED POINTS.
ELEVATIONS ARE IN FEET ABOVE U.S.C. DATUM OR MEAN SEA LEVEL.
THIS DRAWING AND THE DATA HEREON ARE HEREBY MADE A PART OF THE SPECIFICATIONS WORK SHALL BE CONSTRUCTED ACCORDING TO SPECIFICATIONS ON FILE IN THE OFFICE OF THE COUNTY ENGINEER AND SHALL BE PROSECUTED ONLY IN THE PRESENCE OF THE COUNTY ENGINEER.
BEFORE WORK CAN BE STARTED THE CONTRACTOR MUST OBTAIN A PERMIT TO EXCAVATE IN COUNTY STREETS FROM THE L.A. COUNTY ROAD DEPT. 108 W. 2ND ST. AND MAKE A DEPOSIT WITH THE COUNTY ENGINEER, 783 L.A. COUNTY ENGINEERING BUILDING, SUFFICIENT TO COVER THE COST OF CONSTRUCTION INSPECTION AND RECORD PLANS.
APPROVAL OF THIS PLAN BY THE COUNTY OF LOS ANGELES DOES NOT CONSTITUTE A REPRESENTATION AS TO THE ACCURACY OF THE LOCATION OF, OR THE EXISTENCE OR NON-EXISTENCE OF, ANY UNDERGROUND UTILITY, PIPE OR STRUCTURE WITHIN THE LIMITS OF THIS PROJECT. THIS NOTE APPLIES TO ALL SHEETS.

COUNTY OF LOS ANGELES, CALIFORNIA.

RECEIVED
MAY 1 1953
L. A. COUNTY ENGINEER
SANITATION DIVISION

DOUBLE STREET

3211

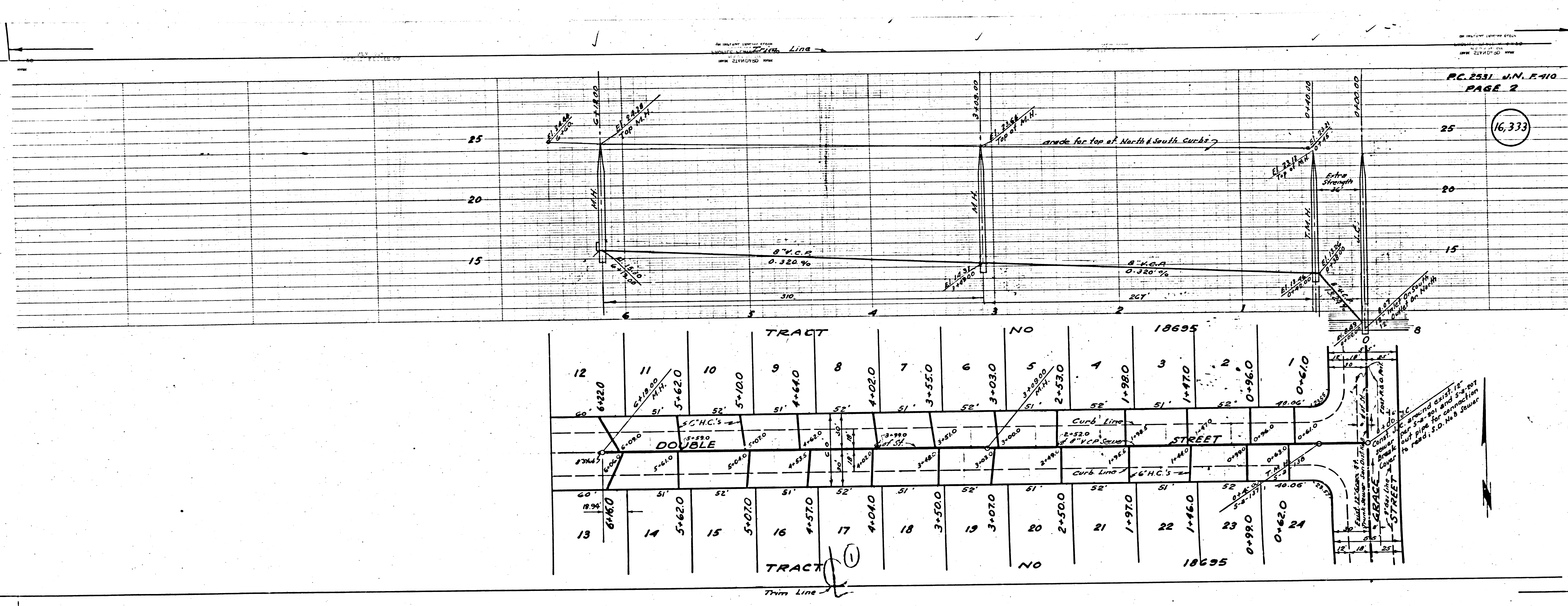
1

RC 2531 SW E 410

DOUBLE 21' SEEL

1

RC 2531



RC 2531 SW E 410
PAGE 2

16,333

GRACE

TRACT NO 18695											
12	11	10	9	8	7	6	5	4	3	2	1
6+220	5+620	5+100	4+640	4+020	3+550	3+030	2+530	1+980	1+470	0+960	0+410
51'	52'	51'	52'	51'	52'	51'	52'	51'	52'	51'	52'
DOUBLE STREET											
13	14	15	16	17	18	19	20	21	22	23	24
6+160	5+620	5+070	4+570	4+040	3+500	3+070	2+500	1+970	1+460	0+990	0+420
51'	52'	51'	52'	51'	52'	51'	52'	51'	52'	51'	52'
TRACT NO 18695											