

N. F. 417
2

(17,838)

B.M. Road Dept. B.M. No. 5Y 1402 - Elev. 58.064
Lead & Tack in East curb of Clark Ave. 255'
South of the E. prod. of Gardendale St.

- NOTE:**
1. No representative of the County Engineer will survey or layout any portion of the work.
 2. The owner or his authorized representative shall furnish the County Engineer with grade sheets and stations for all house connections and Y branches and shall provide stakes for them at their proper locations with stationing plainly marked. Any change in location shall be requested in writing by the owner or his representative.
 3. No revisions shall be made in these plans without approval of the County Engineer.
 4. Use standard manhole frames and covers, 5-a-111.
 5. Use standard strength pipe.
 6. Use cement mortar for all vitrified clay pipe joints.
 7. Resurface all trench within paved area to meet L.A. County Road Dept. requirements.
 8. Encase four feet of sewer at points of interference with poles, 5-a-112.
 9. All structures shall be brick sewer structures, 5-a-104.
 10. Provide stakes on the property lines or property lines produced at right angles to the sewer line at the center line of each manhole.
 11. Slopers to be installed with joint compound by manufacturer of his plant. Spec. Sec. 33.46.
 12. Install wire and logs. Spec. Sec. 46.
 13. Concrete pavement to be at least 2" in depth with concrete saw. Spec. Sec. 69.
 14. Construct top of structures 6" above finish grade.

P.C. 2538 - J.N. F. 417
**PROFILE, ALIGNMENT, AND GRADE OF
SANITARY SEWERS
TO BE CONSTRUCTED IN**
Page 1

TRACT NO. 18826

(17,837)

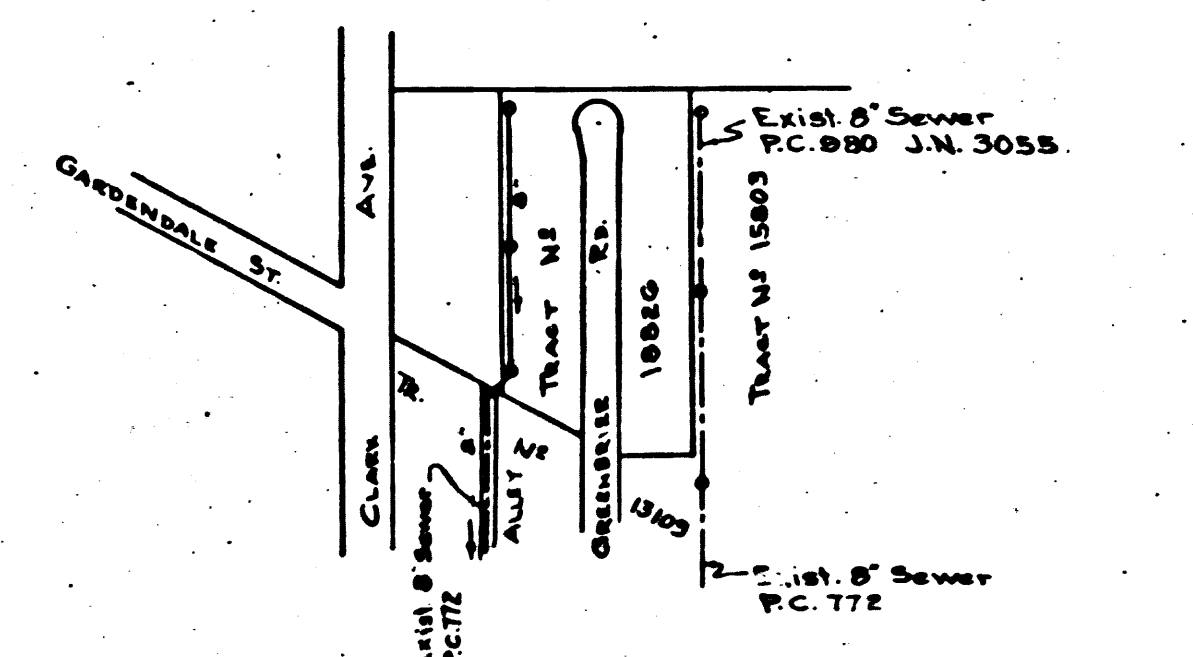
**PRIVATE CONTRACT No. 2538
W.S. 33**
SHEET 1 OF 1 SHEET
SCALE: VERT. 1"=4'
HORIZ. 1"=40'
DEC. 1952

PREPARED IN THE OFFICES OF
VALLEY ENGINEERING CO.
BY *James G. Manning* Reg. C.E. No. 7676
FOR LEGEND SEE PLAN No. 5-a-G4

NOTE:
Grades to which this improvement is to be constructed are shown on Plans and Profiles. Grade points for top of curbs, center line of streets or center line of alley are shown by circles on profiles. At all points between designated points the grade shall be established as to conform to a straight line drawn between said designated points. Elevations are in feet above U.S.S. Datum or Mean Sea Level.
This drawing and the data hereon are hereby made a part of the specifications.
Work shall be constructed according to specifications on file in the office of the County Engineer and shall be prosecuted only in the presence of the County Engineer.
Before work can be started, the contractor must obtain a permit to excavate in County streets from the L.A. County Road Dept., 108 W. 2nd St., and make a deposit with the County Engineer, 733 L.A. County Engineering Bldg., sufficient to cover the cost of construction inspection and record plans.
Approval of this plan by the County of Los Angeles does not constitute a representation as to the accuracy of the location of or the existence or non-existence of any underground utility, pipe, or structure within the limits of this project.

RECEIVED
DEC 27 1952

Note: Lots 1 through 12 incl. of Tract No. 18826 to be connected by permit to P.C. 260 J.N. 3055



INDEX MAP
Scale: 1"=400'
P.C. 2538 J.N. F. 417

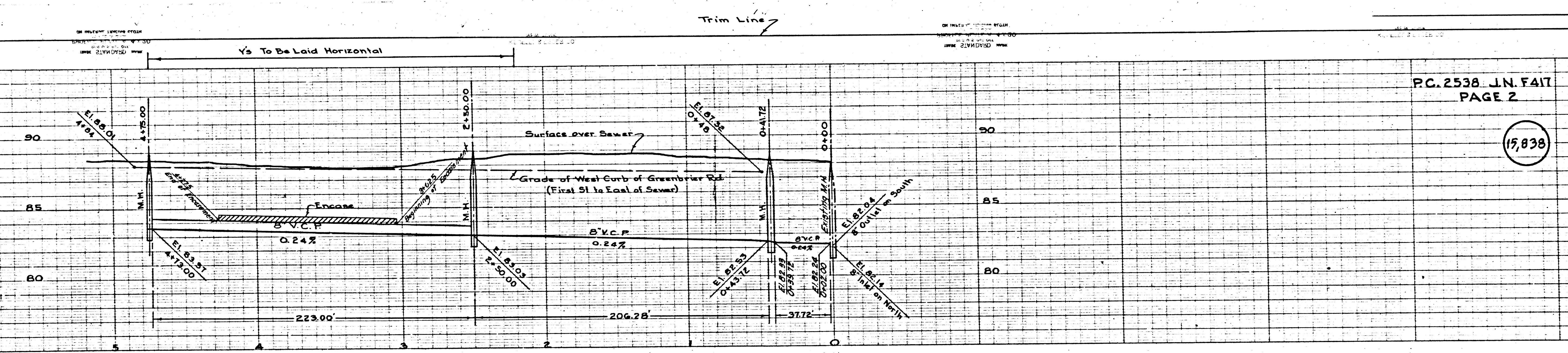
COUNTY OF LOS ANGELES, CALIFORNIA
APPROVED, **WILLIAM J. FOX**, COUNTY ENGINEER
BY *W. J. Fox* CHIEF DEPUTY
CHECKED BY *Richard E. Kuhn* 1-8-53
OFFICE OF COUNTY ENGINEER, REG. C.E. No. 7860

APPROVED, **A.M. RAWN**
CHIEF ENGR. CO. 5th DIST. No. 2
BY *A.M. Rawn* OFFICE ENGR.

P.C. 2538
J.N. F. 417

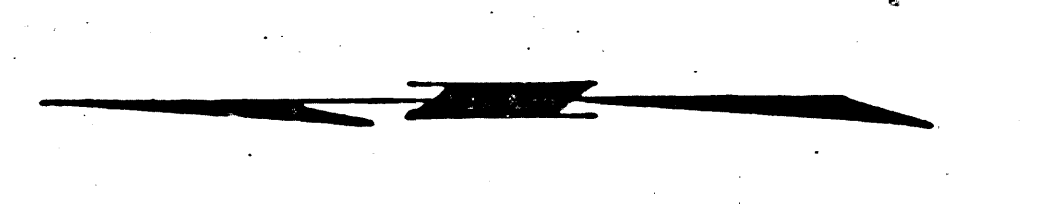
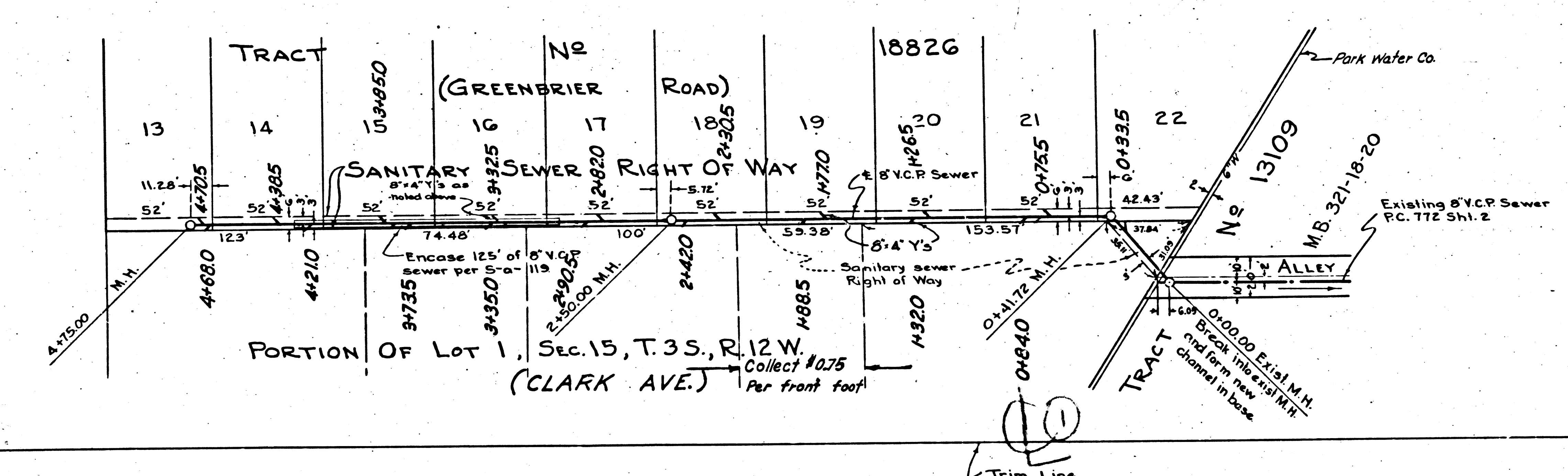
40 OR
1-7-53
Trim Line

PC 2538



PC. 2538 J.N. FAIT
PAGE 2

15,838



Trim Line