

PROFILE, ALIGNMENT AND GRADE OF P.C. 2540  
**SANITARY SEWERS** J.N.F 419  
 TO BE CONSTRUCTED IN PAGE 1

16,867

**TRACT No 18870**

- NO REPRESENTATIVE OF THE COUNTY ENGINEER WILL SURVEY OR LAYOUT ANY PORTION OF THE WORK.  
 THE OWNER OR HIS AUTHORIZED REPRESENTATIVE SHALL FURNISH THE COUNTY ENGINEER WITH GRADE SHEETS AND STATIONS FOR ALL HOUSE LATERALS AND Y BRANCHES AND SHALL PROVIDE STAKES FOR THEM AT THEIR PROPER LOCATIONS WITH STATIONING PLAINLY MARKED. ANY CHANGE IN LOCATION SHALL BE REQUESTED IN WRITING BY THE OWNER OR HIS REPRESENTATIVE.  
 NO REVISION SHALL BE MADE IN THESE PLANS WITHOUT APPROVAL OF THE COUNTY ENGINEER.
- 1 USE STANDARD MANHOLE FRAMES AND COVERS S-a-117 Except as Noted
  - 2 USE STANDARD STRENGTH PIPE EXCEPT AS NOTED
  - 3 USE CEMENT MORTAR FOR ALL VITRIFIED CLAY PIPE JOINTS.
  - 4 RESURFACE ALL TRENCH WITHIN PAVED AREA TO MEET L.A. COUNTY ROAD DEPT. REQUIREMENTS
  - 5 ENCASE FOUR FEET OF SEWER AT POINTS OF INTERFERENCE WITH POLES, S-a-119
  - 6 HOUSE LATERALS TO BE CONSTRUCTED WITH INVERTS AT PROPERTY LINE 6 FEET BELOW CURB GRADE EXCEPT AS NOTED
  - 7 ALL STRUCTURES SHALL BE BRICK SEWER STRUCTURES, S-a-104 EXCEPT AS NOTED.
  - 8 PROVIDE STAKES ON THE PROPERTY LINES OR PROPERTY LINES PRODUCED AT RIGHT ANGLES TO THE SEWER LINE AT THE CENTER LINE OF EACH MANHOLE.
  - 9 FOR ALLOWABLE LEAKAGE TEST USE FORMULA No 1, SPECS. SEC. 51

**PRIVATE CONTRACT No 2540**  
 W.S. 65  
 SHEET 1 OF 1 SHEET

SCALE VERT 1" = 4'  
 HORIZ 1" = 40' March 1953  
 PREPARED

BY Tracy R. Rawlin Reg. C.E. 2267  
 FOR LEGEND SEE PLAN NO. S-a-64

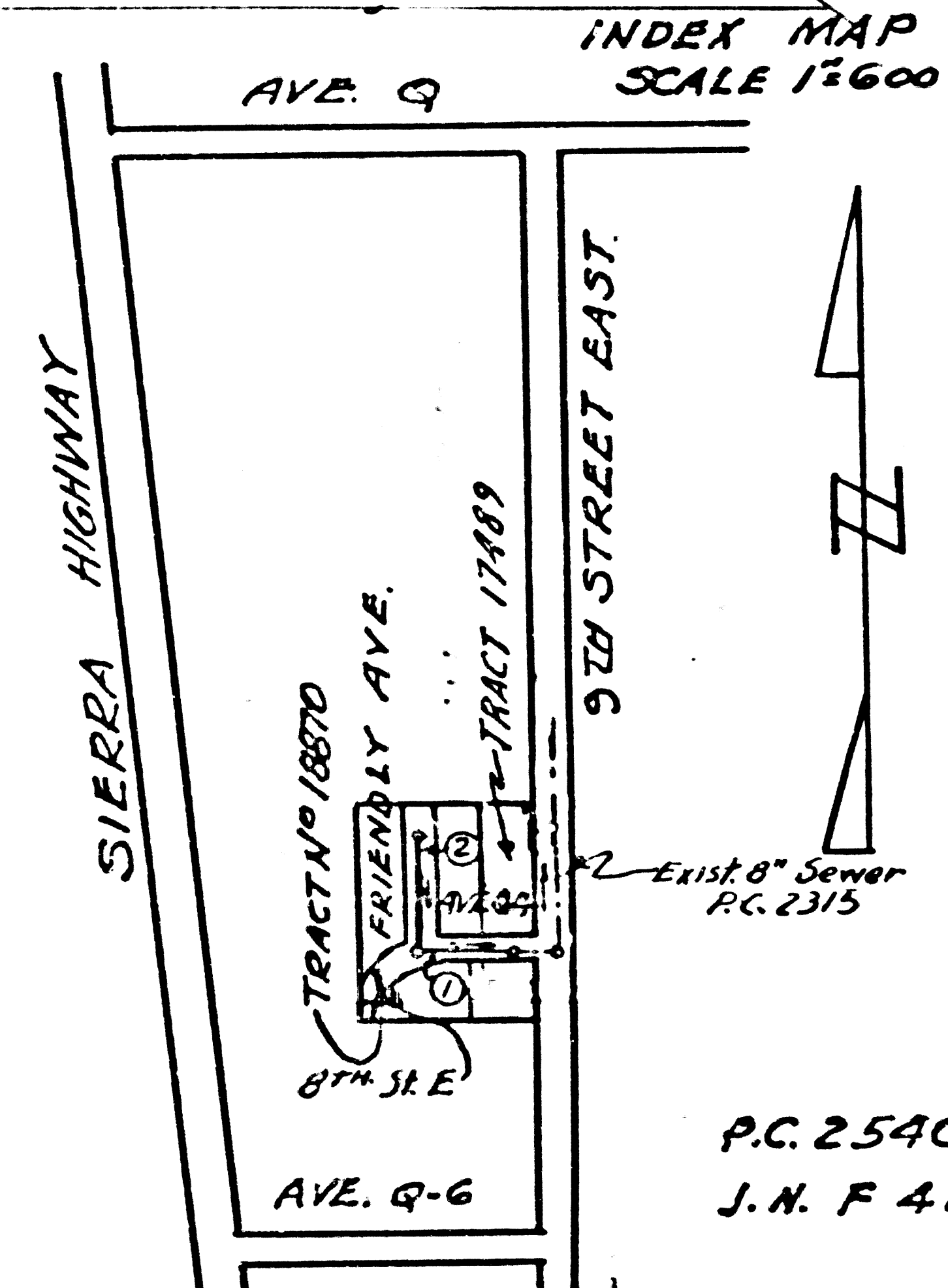
**NOTE:**  
 GRADES TO WHICH THIS IMPROVEMENT IS TO BE CONSTRUCTED ARE SHOWN ON PLANS AND PROFILES. GRADE POINTS FOR TOP OF CURBS, CENTER LINE OF STREETS, OR CENTER LINE OF ALLEY ARE SHOWN BY CIRCLES ON PROFILES. AT ALL POINTS BETWEEN DESIGNATED POINTS, THE GRADE SHALL BE ESTABLISHED SO AS TO CONFORM TO A STRAIGHT LINE DRAWN BETWEEN SAID DESIGNATED POINTS. ELEVATIONS ARE IN FEET ABOVE U.S.G.S. DATUM OR MEAN SEA LEVEL.  
 THIS DRAWING AND THE DATA HEREON ARE HEREBY MADE A PART OF THE SPECIFICATIONS. WORK SHALL BE CONSTRUCTED ACCORDING TO SPECIFICATIONS ON FILE IN THE OFFICE OF THE COUNTY ENGINEER AND SHALL BE PROSECUTED ONLY IN THE PRESENCE OF THE COUNTY ENGINEER BEFORE WORK CAN BE STARTED. THE CONTRACTOR MUST OBTAIN A PERMIT TO EXCAVATE IN COUNTY STREETS FROM THE L.A. COUNTY ROAD DEPT. 100 W 20th ST. AND MAKE A DEPOSIT WITH THE COUNTY ENGINEER, 733 L.A. COUNTY ENGINEERING BUILDING, SUFFICIENT TO COVER THE COST OF CONSTRUCTION INSPECTION AND RECORD PLANS.  
 APPROVAL OF THIS PLAN BY THE COUNTY OF LOS ANGELES DOES NOT CONSTITUTE A REPRESENTATION AS TO THE ACCURACY OF THE LOCATION OF, OR THE EXISTENCE OR NON-EXISTENCE OF, ANY UNDERGROUND UTILITY, PIPE, OR STRUCTURE WITHIN THE LIMITS OF THIS PROJECT. THIS NOTE APPLIES TO ALL SHEETS.

**COUNTY OF LOS ANGELES, CALIFORNIA**  
 APPROVED  
**WILLIAM J. FOX** COUNTY ENGINEER  
 BY Althegeon CHIEF DEPUTY  
 APPROVED, **A.M. RAWN**  
 CHIEF ENGR. CO. SAN. DIST. NO 20  
 BY R. E. Kuhn OFFICE ENGINEER  
 CHECKED BY: Richard E. Kuhn 4-21-53  
 OFFICE OF COUNTY ENGINEER, REG. C.E. 7860

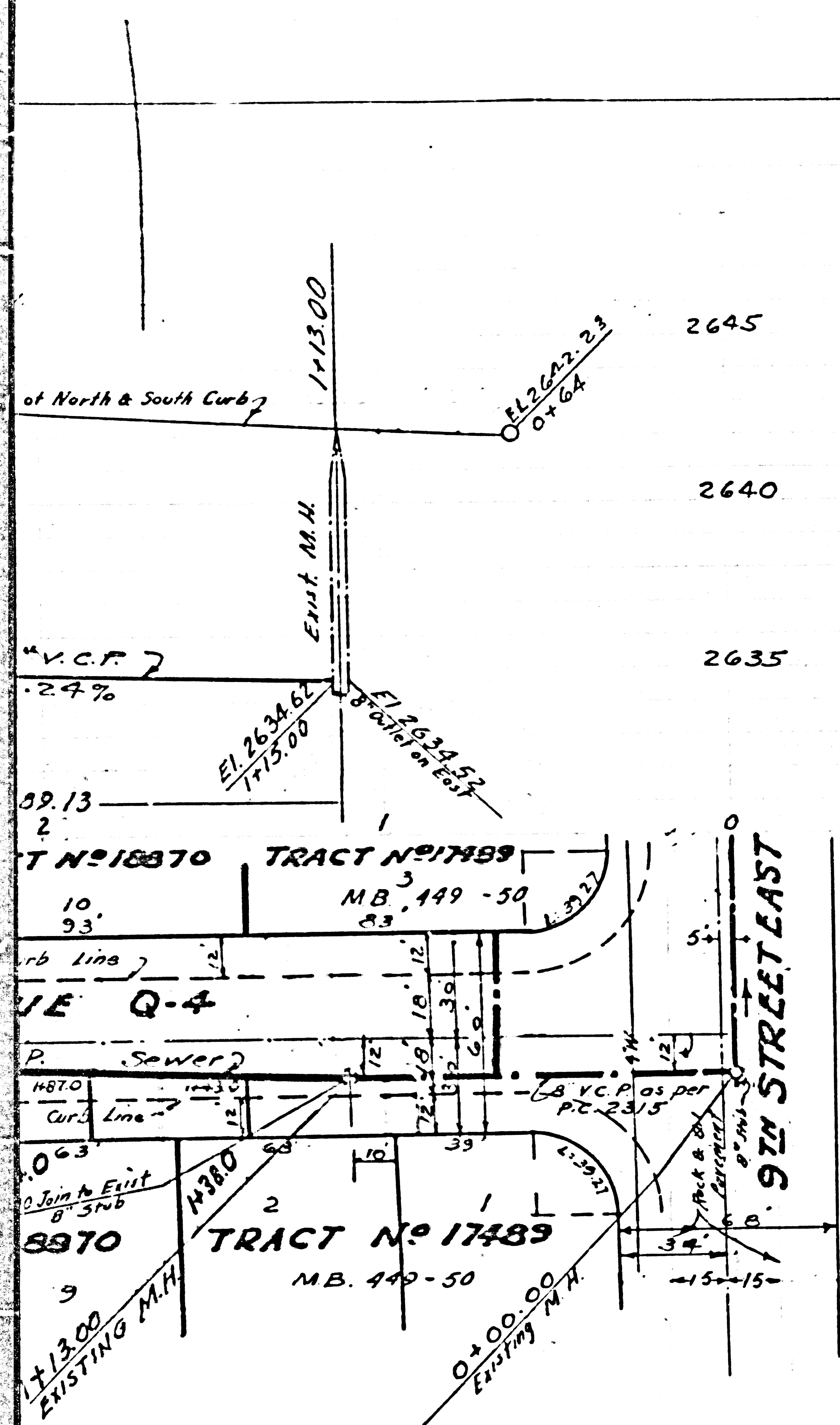
BALL ALL JOINTS WITH 4" CEMENT MORTAR.

B.M. U.S.B.M. 3130 ELEV. 2644.962 - U.S.G.S. K-426-SH  
 DISC IN CONC. POST 0.40 MI. N. OF PALMDALE STA. ON S.P.R.R.  
 84° E. OF E. MAIN TRACK.

SHEET No	PAGES
1	1-2



checked 7-31-53 M. J. Fox

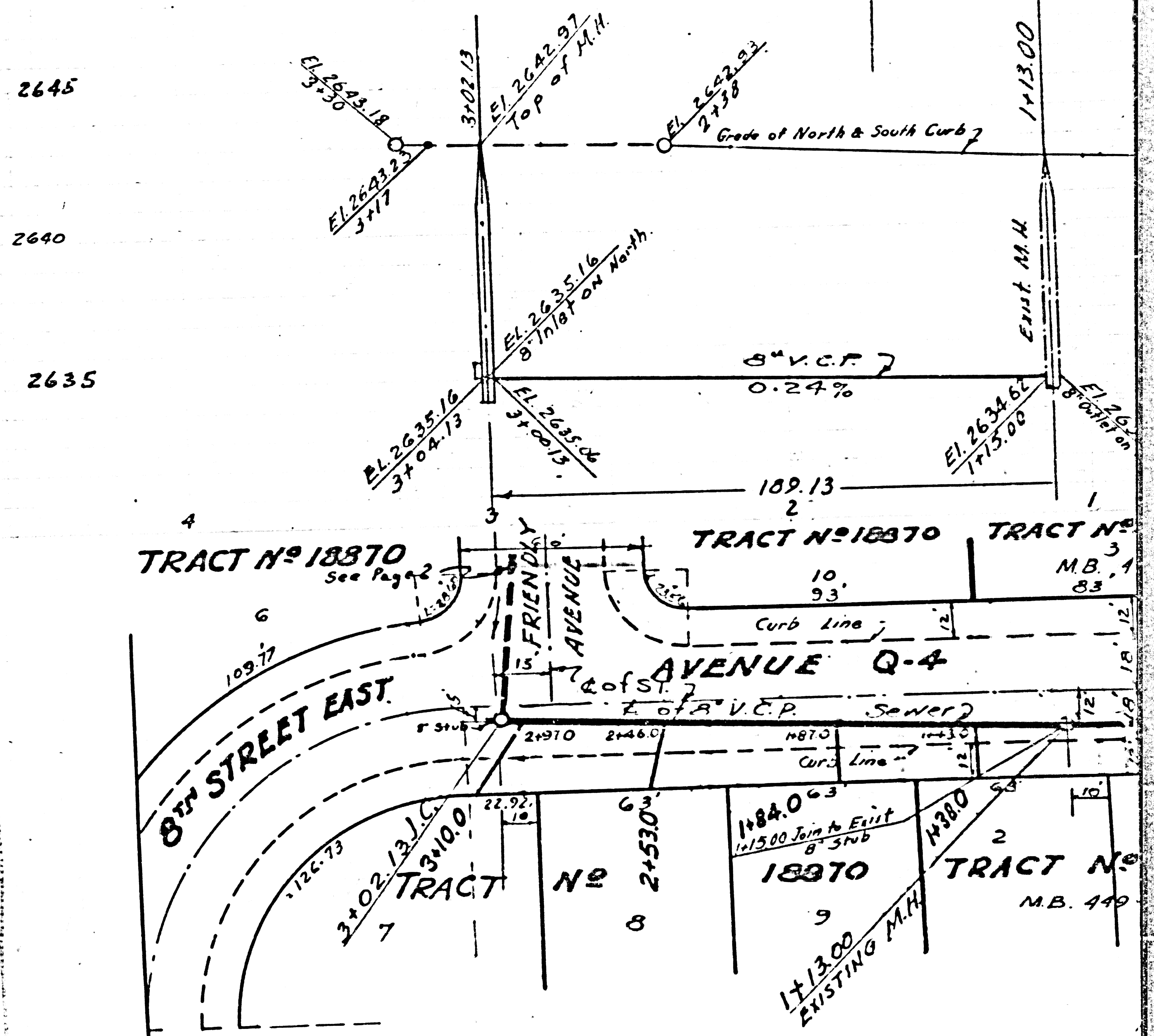
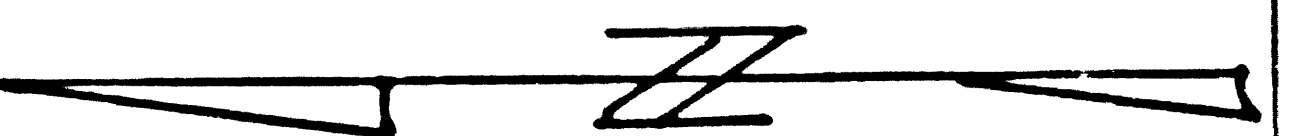
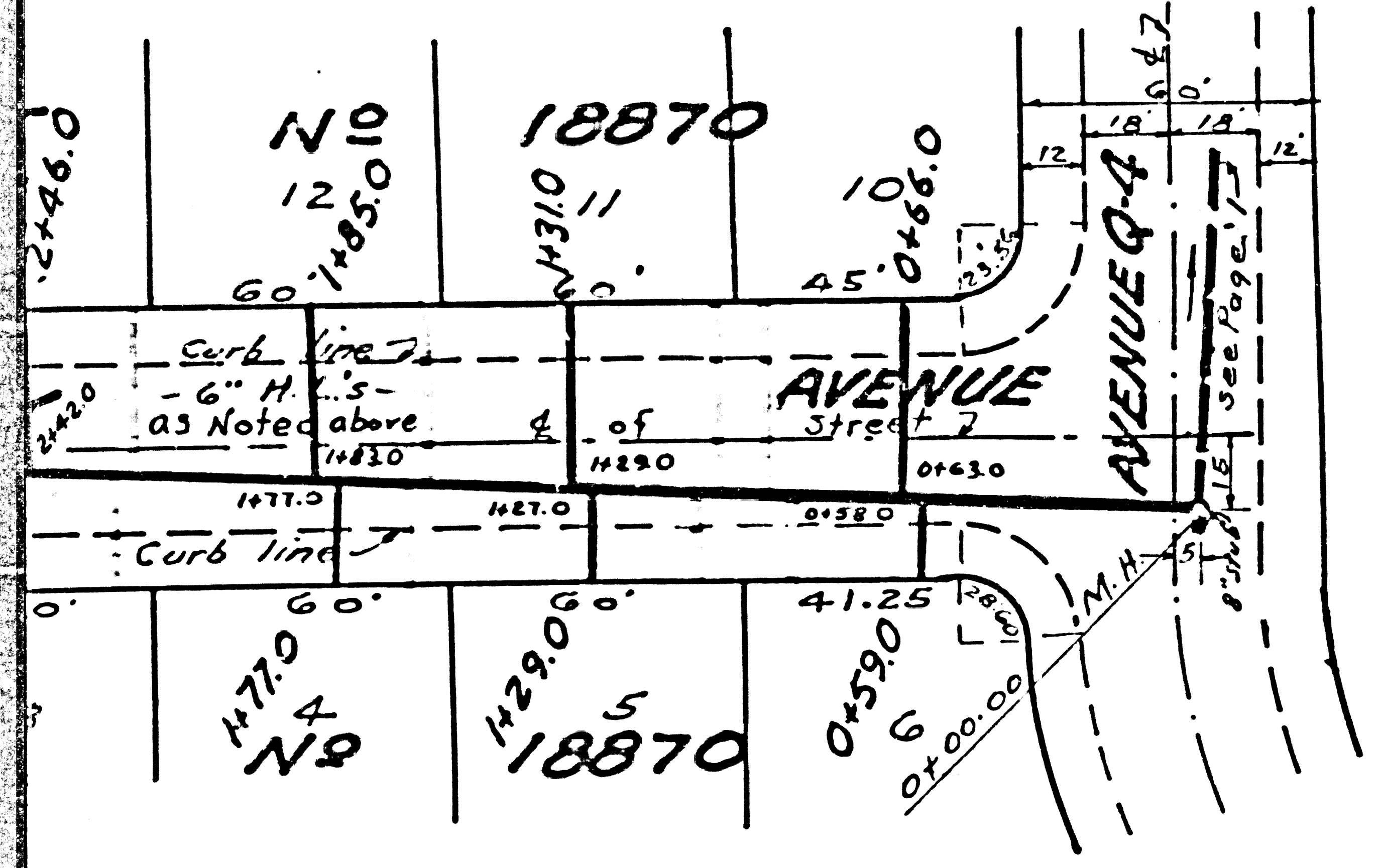
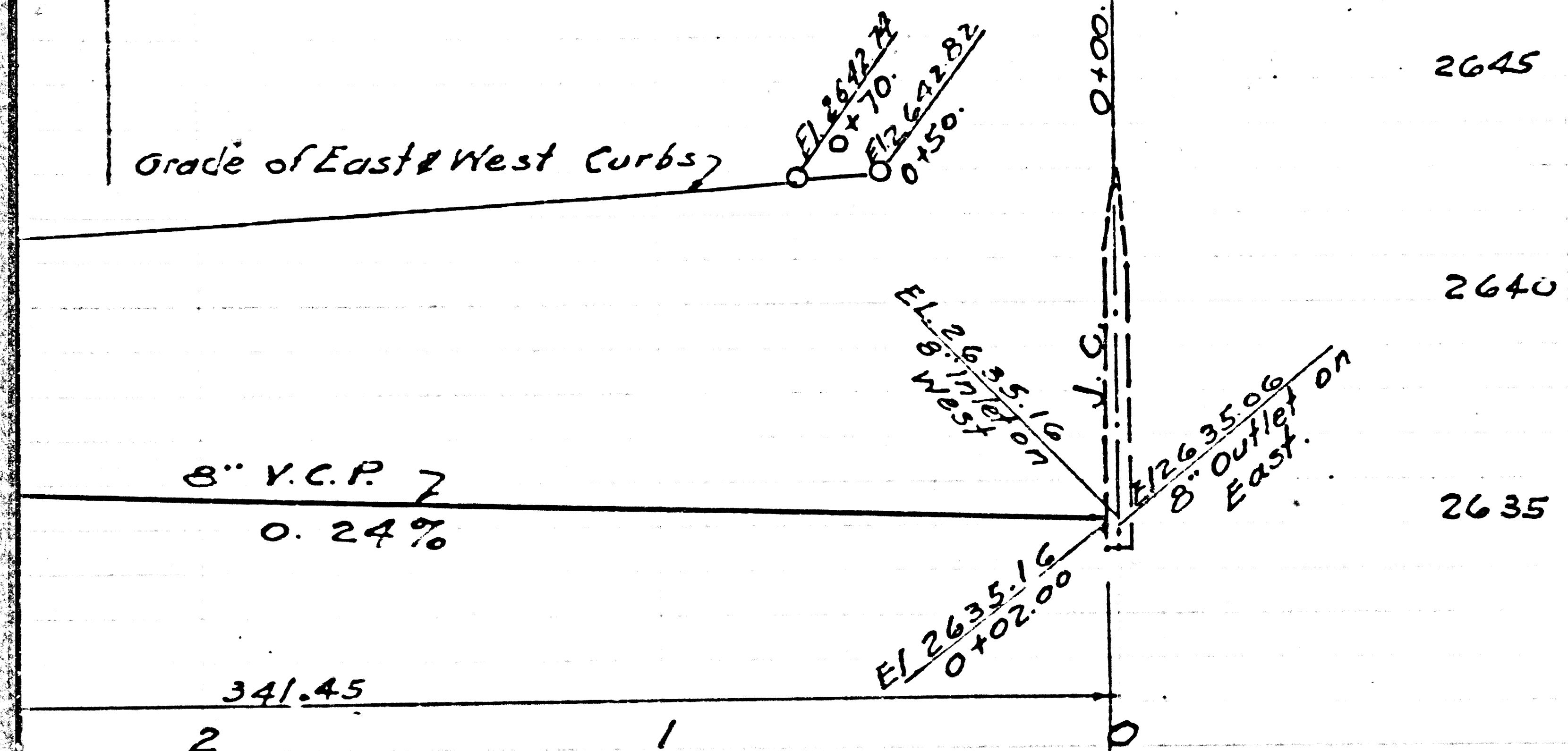


SHT 1 of 1

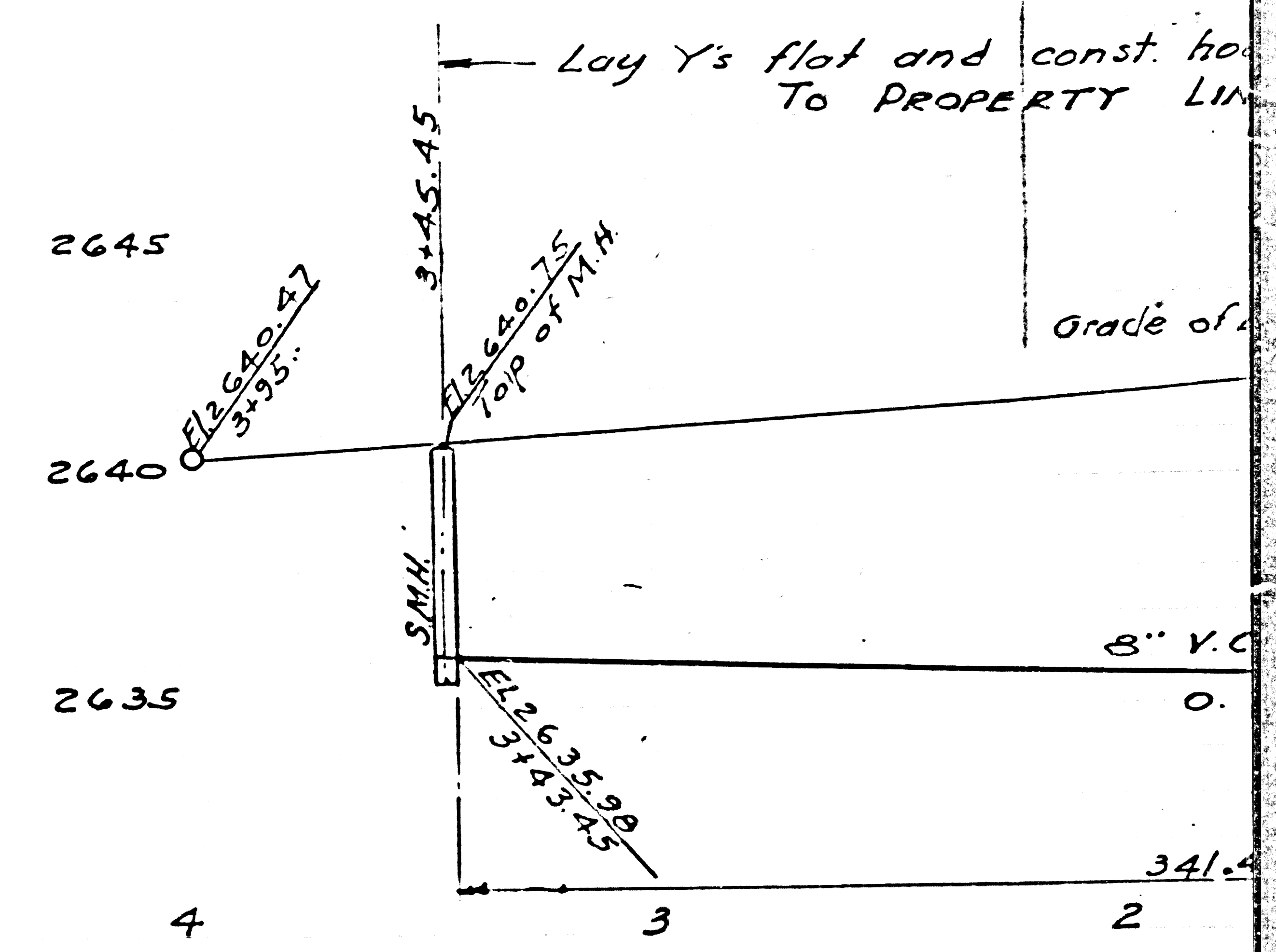
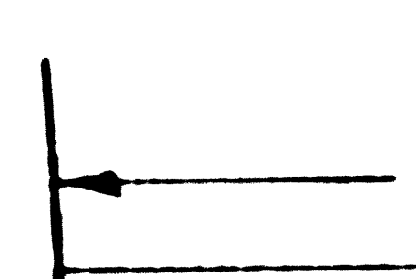
and const. house laterals with  $\frac{1}{2}$ " Rise per foot  
PROPERTY LINE

P.C. 2540  
J.N. F 419  
Page 2

16,868



PC 2540 SHT 1 of 1 Pg 3



Lay Y's flat and const. to PROPERTY LINE

Grade of 0.00

3" V.C.

4 3 2

