

B.M. - U.S.G.S. B.M. 6426 0.4 mile
North of Palmdale Station on S.P.R.R.
3rd disc on conc. post 25' West of E. of
Tracks. E.I. 2636-42

- NOTE:**
No representative of the County Engineer will survey or lay out any portion of the work.
The owner or his authorized representative shall furnish the County Engineer with grade sheets and stations for all house connections and Y branches and shall provide slopes for them of their proper locations with stationing plainly marked. Any change in location shall be requested in writing by the owner or his representative.
No revisions shall be made in these plans without approval of the County Engineer.
1. Use standard manhole frames and covers, 3'-6" I.T. Except as Noted.
 2. Use standard strength pipe except as noted.
 3. Use cement mortar for all vitrified clay pipe joints.
 4. Resurface all trench within paved area to meet L.A. Co. Road Dept. requirements.
 5. Encase four feet of sewer at points of interference with poles, 3'-6" I.T.
 6. House connections to be constructed with invert at property line 6" feet below curb grade, EXCEPT AS NOTED.
 7. All structures shall be brick sewer structures, 3'-6" I.T., EXCEPT AS NOTED.
 8. Provide slopes on the property lines or property lines produced at right angles to the sewer lines at the centerline of each manhole.
 9. BALL ALL JOINTS WITH 4" CEMENT MORTAR.
 10. For allowable leakages test use Formula No 1, See Specs. Sec. 51.

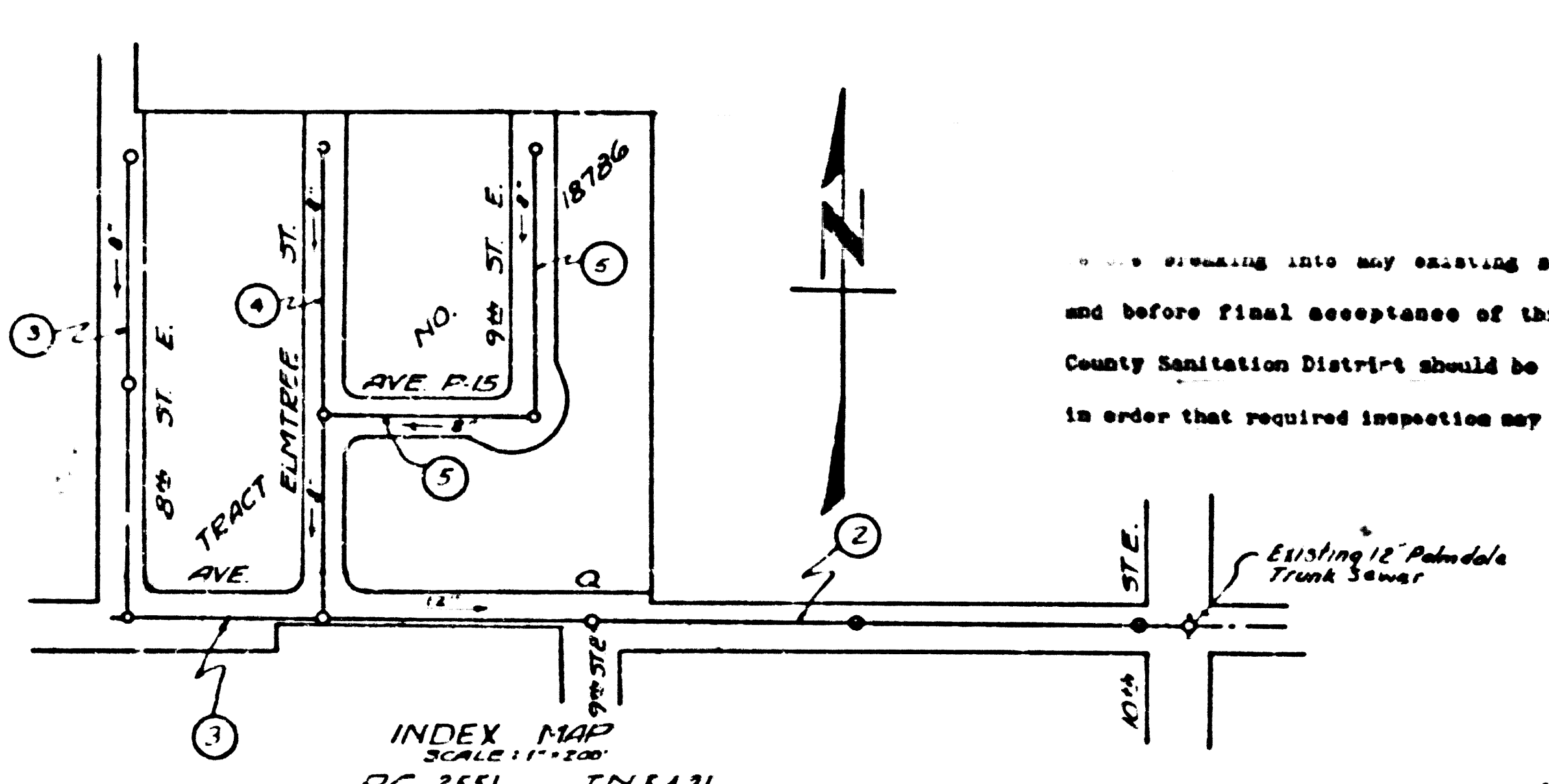
PROFILE, ALIGNMENT, AND GRADE OF
SANITARY SEWERS
TO BE CONSTRUCTED IN

TRACT NO. 18786
AVENUE Q
FROM 10th STREET EAST
8th STREET EAST
ELMYRE STREET
FROM AVENUE Q TO 10th ST. NORTH
AVENUE P-15
FROM LINDSEY ST. TO STASE
9th STREET EAST
FROM AVENUE P-15 FOR 33.0' NORTH

PRIVATE CONTRACT NO. 2551
WS. 65
SHEET 1 OF 1 SHEET
SCALE: HORIZ. 1"=40' VERT. 1"=4'
DECEMBER, 1952
PREPARED IN THE OFFICES OF
KARL F. TUTTLE ENGINEERING CO., INC.
BY *W. J. Fox* L.S.C.E. 1
FOR LEGEND SEE PLAN NO. 5-A-64

16696

SHEET NO.	PAGES
1	1-5



NOTE:
Grades to which this improvement is to be constructed are shown on plans and profiles. Grade points for top of curbs, centerline of streets or centerline of alley are shown by circles on profiles at all points between designated points. The grade shall be established so as to conform to a straight line drawn between said designated points.
Elevations are in feet above U.S.G.S. datum or mean sea level.
This drawing and the data hereon are hereby made a part of the specifications.
Work shall be constructed according to specifications on file in the office of the County Engineer and shall be prosecuted only in the presence of the County Engineer.
Before work can be done, the contractor must obtain a permit to excavate in county streets from the L.A. County Road Dept., 100 N. 2nd St. and make a deposit with the County Engineer, 733 E. 4th County Engineering Bldg. sufficient to cover the cost of construction inspection and record plans.
Approval of this plan by the county of Los Angeles does not constitute a representation as to the accuracy of the location of or the existence or non-existence of any underground utility, pipe or structure within the limits of this project. This note applies to all sheets.

COUNTY OF LOS ANGELES, CALIFORNIA
APPROVED, WILLIAM J. FOX, COUNTY ENGINEER
BY *W. J. Fox*
CHIEF DEPUTY

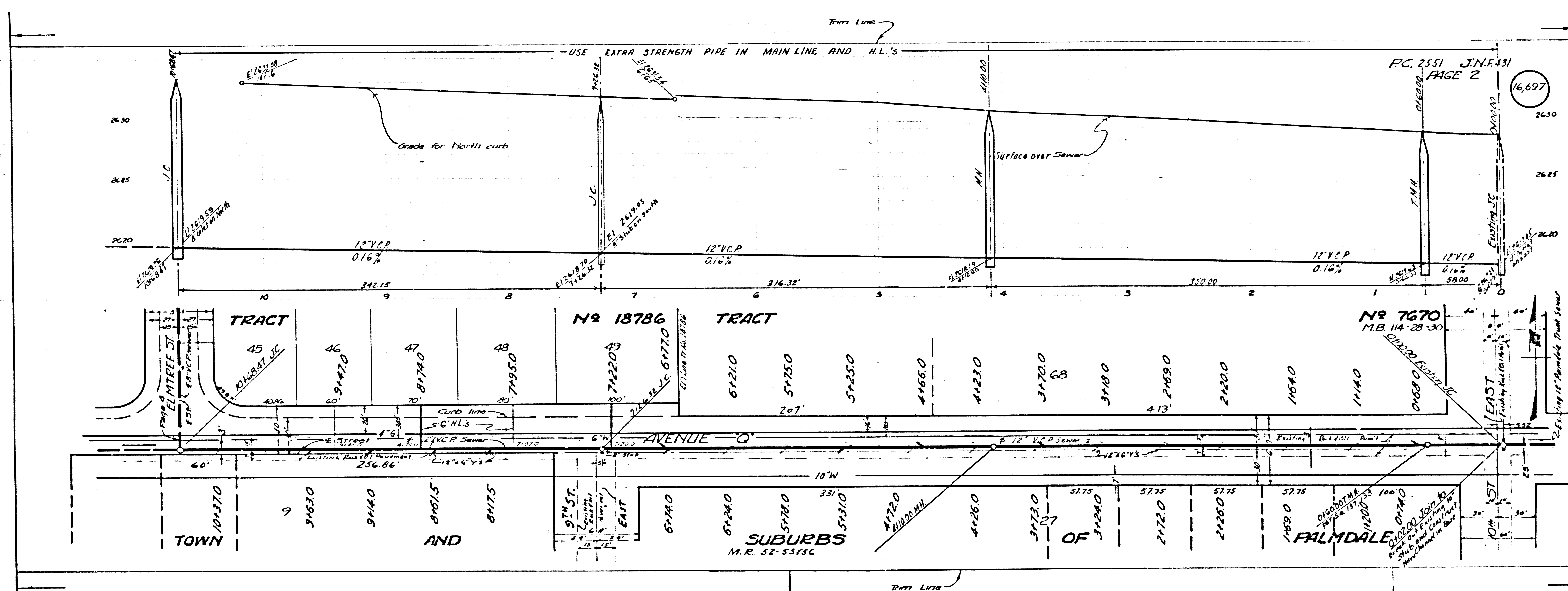
APPROVED, A. M. BAWN
CHIEF ENGR. CO. SAN. DIST NO. 80
BY *A. M. Bawn*
OFFICE ENGINEER

CHECKED BY: *Richard E. Kub...* 2-25-53
OFFICE OF COUNTY ENGINEER, REG. C.E. NO. 7860

U.G. checked
2-6-53
R.S.

Trin Line

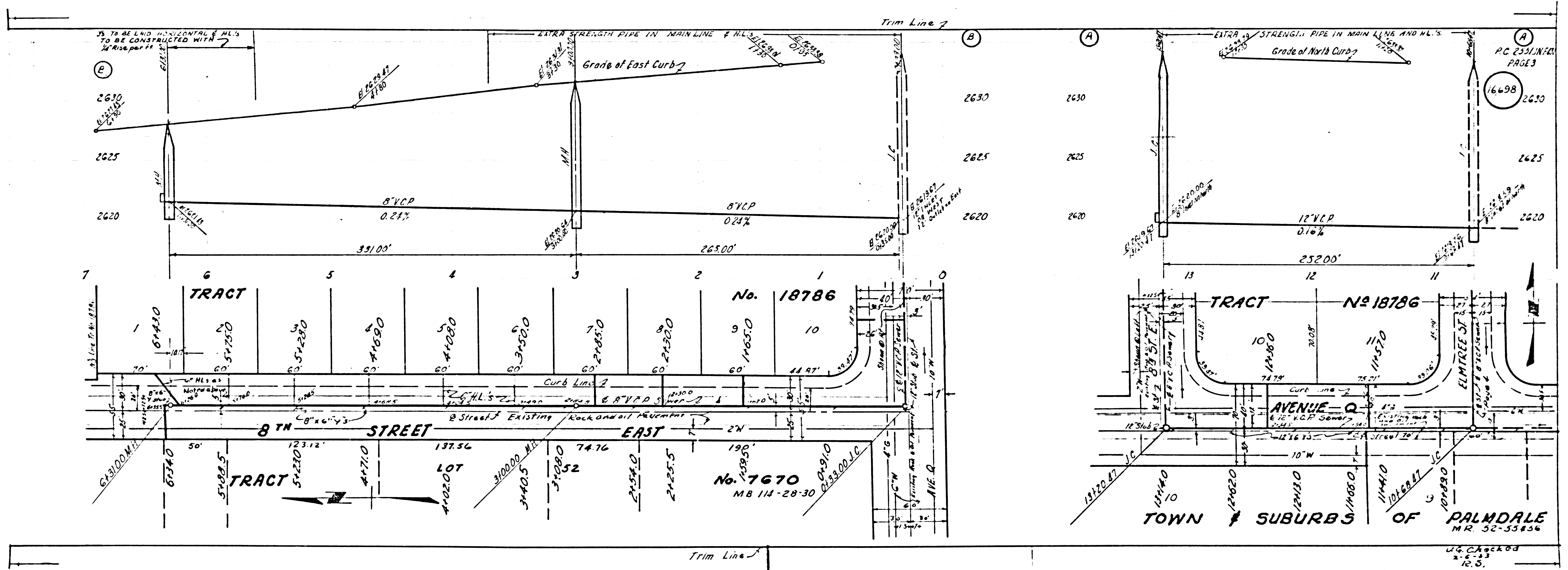
(A)
 P.C. 2551 J.N.F. 431
 PAGE 3
 16,698
 2630
 2625
 2620
 ELMTREE ST
 PALMDALE
 M.R. 52-53856
 G. Checkard
 2-6-53
 12.0.



P.C. 2551 J.N.F. 431
 PAGE 2
 16,697

TRACT NO 18786 TRACT NO 7670
 MB 114-28-30
 AVENUE O
 TOWN AND SUBURBS OF PALMDALE
 M.R. 52-53856

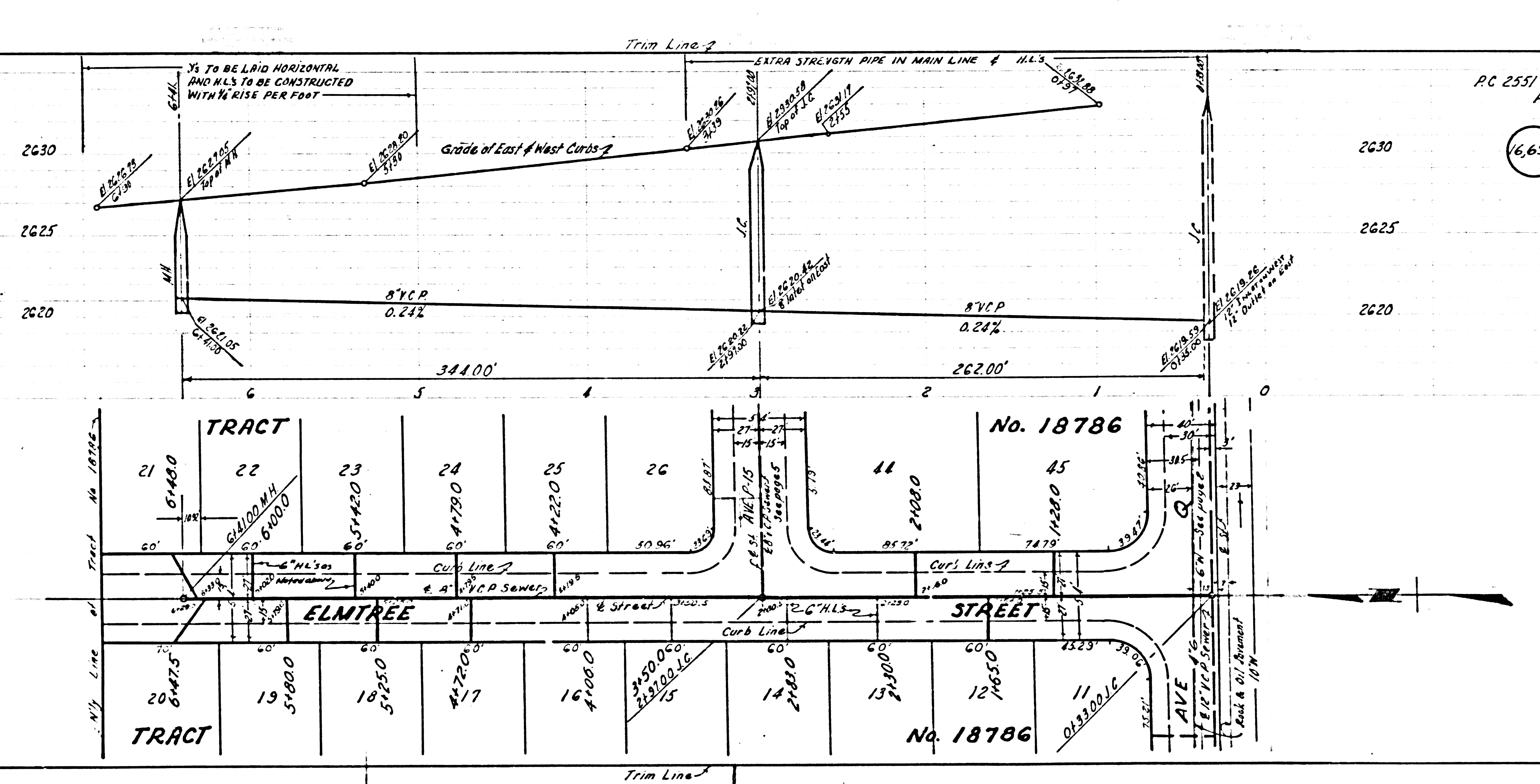
16,699



16,498

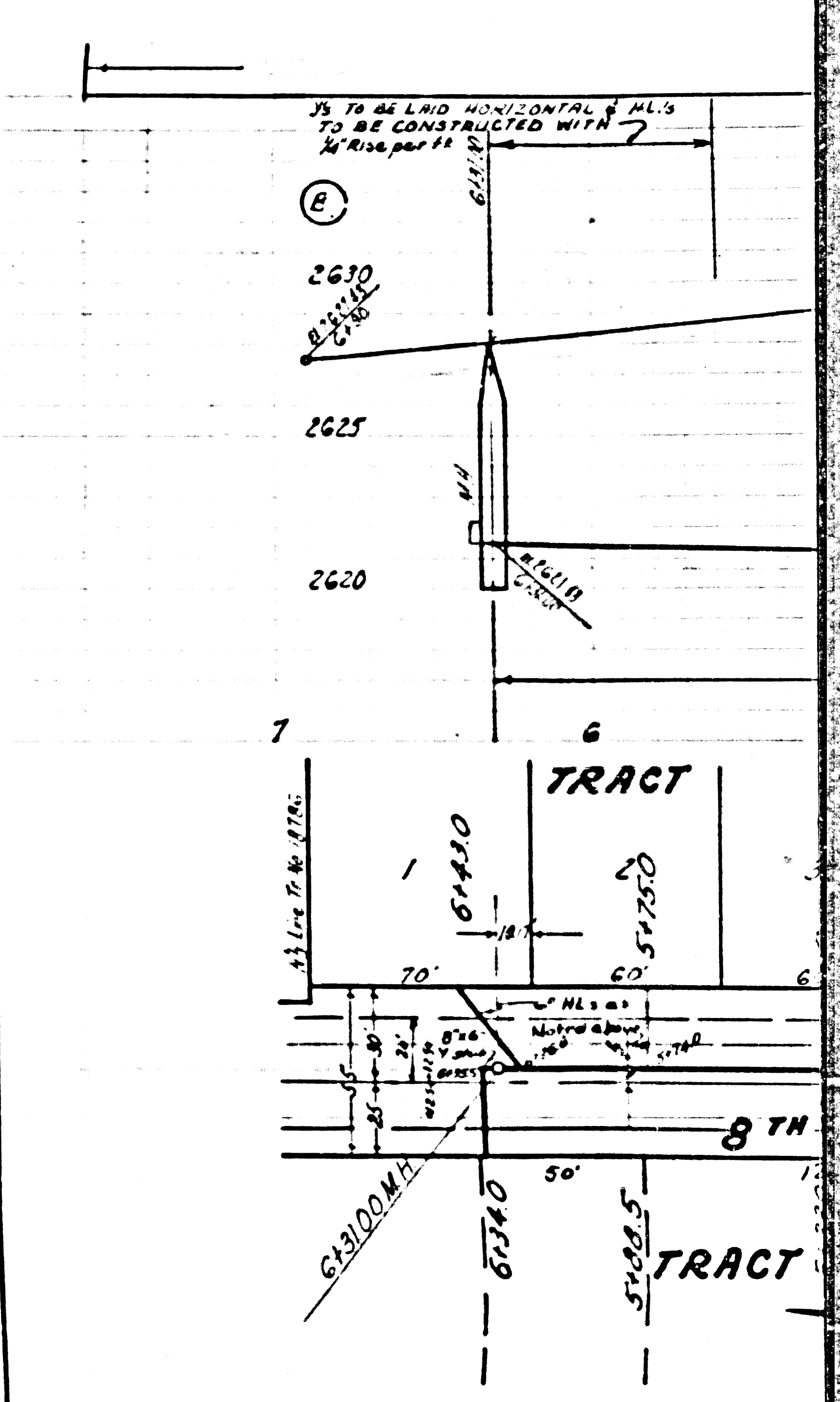
U.C. Check
2.6.33
10.5.

TOWN & SUBURBS OF PALMDALE
MR. 52-55856



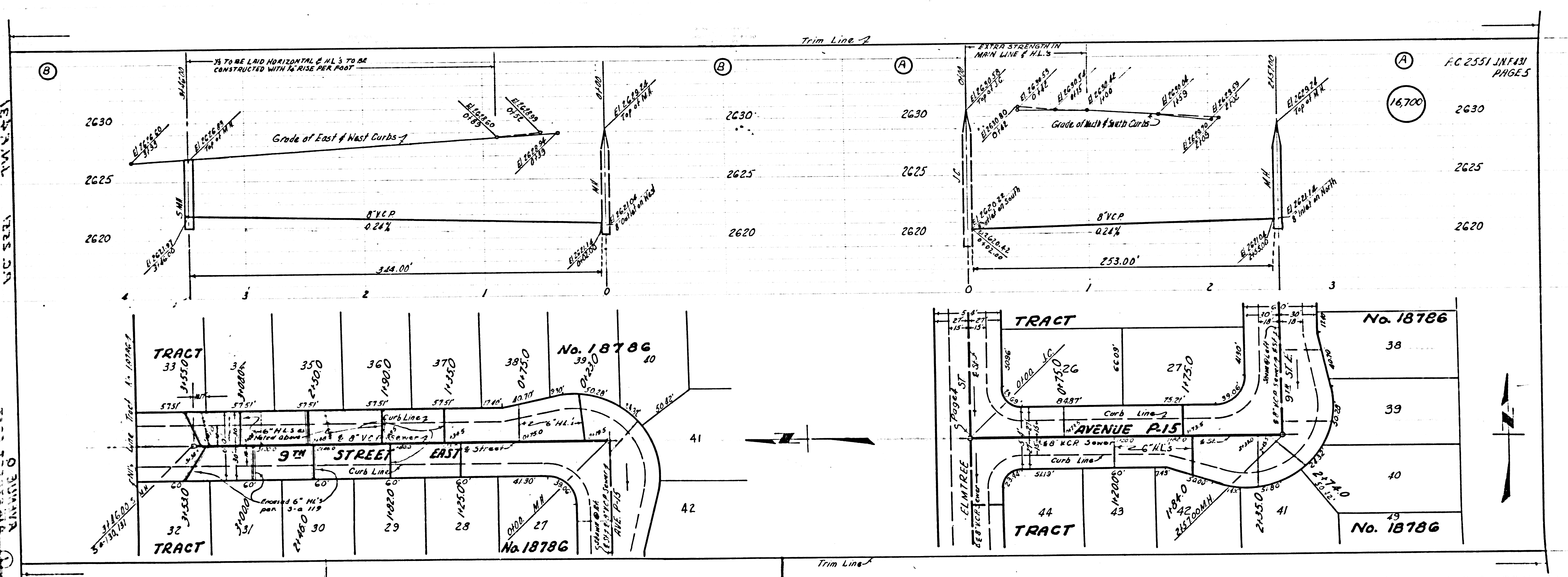
PC 2551 JNF431
PAGE 4

(16,699)



PC 2551 JNF431
PAGE 4

(16,699)



153' x 111' 1/2' VRS. ON
 153' x 111' 1/2' VRS. ON

F.C. 2551 J.N.F.431
PAGE 5

16,700

