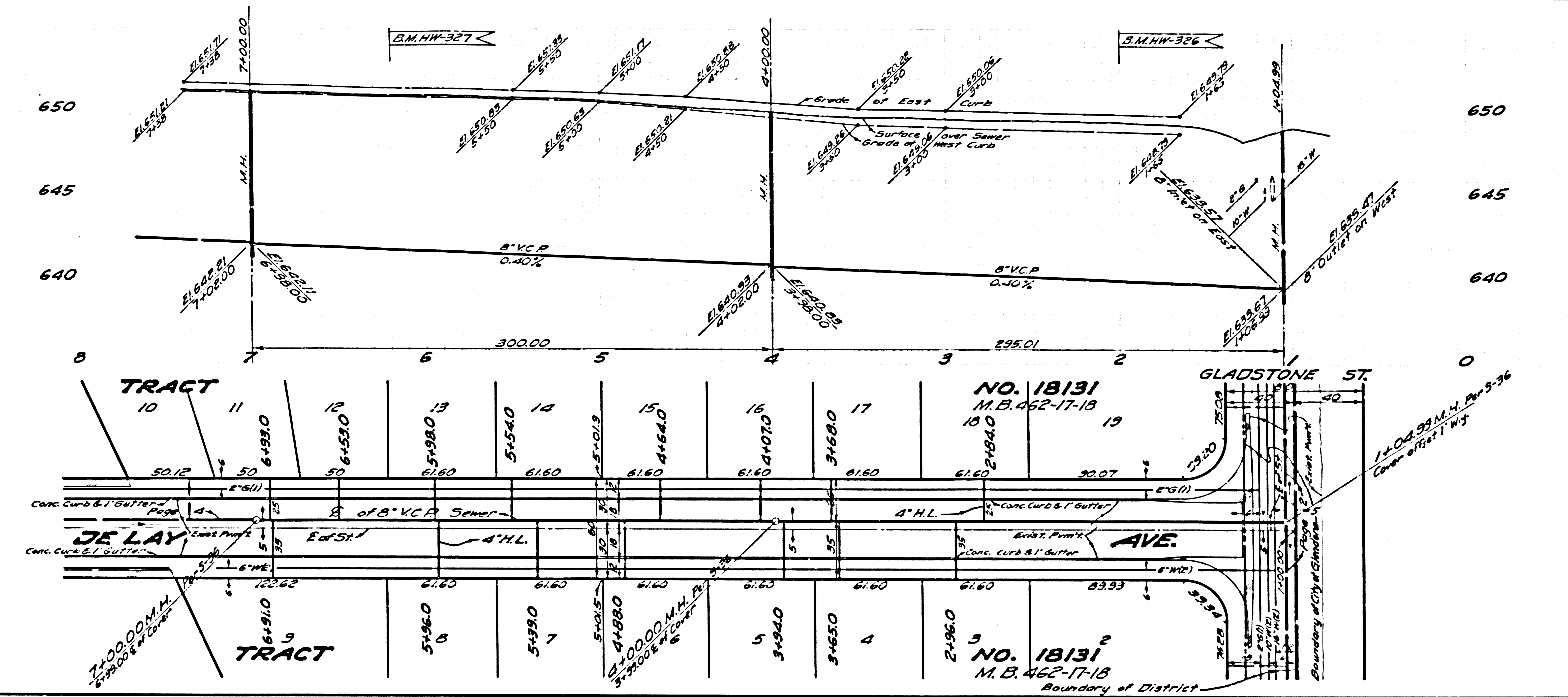
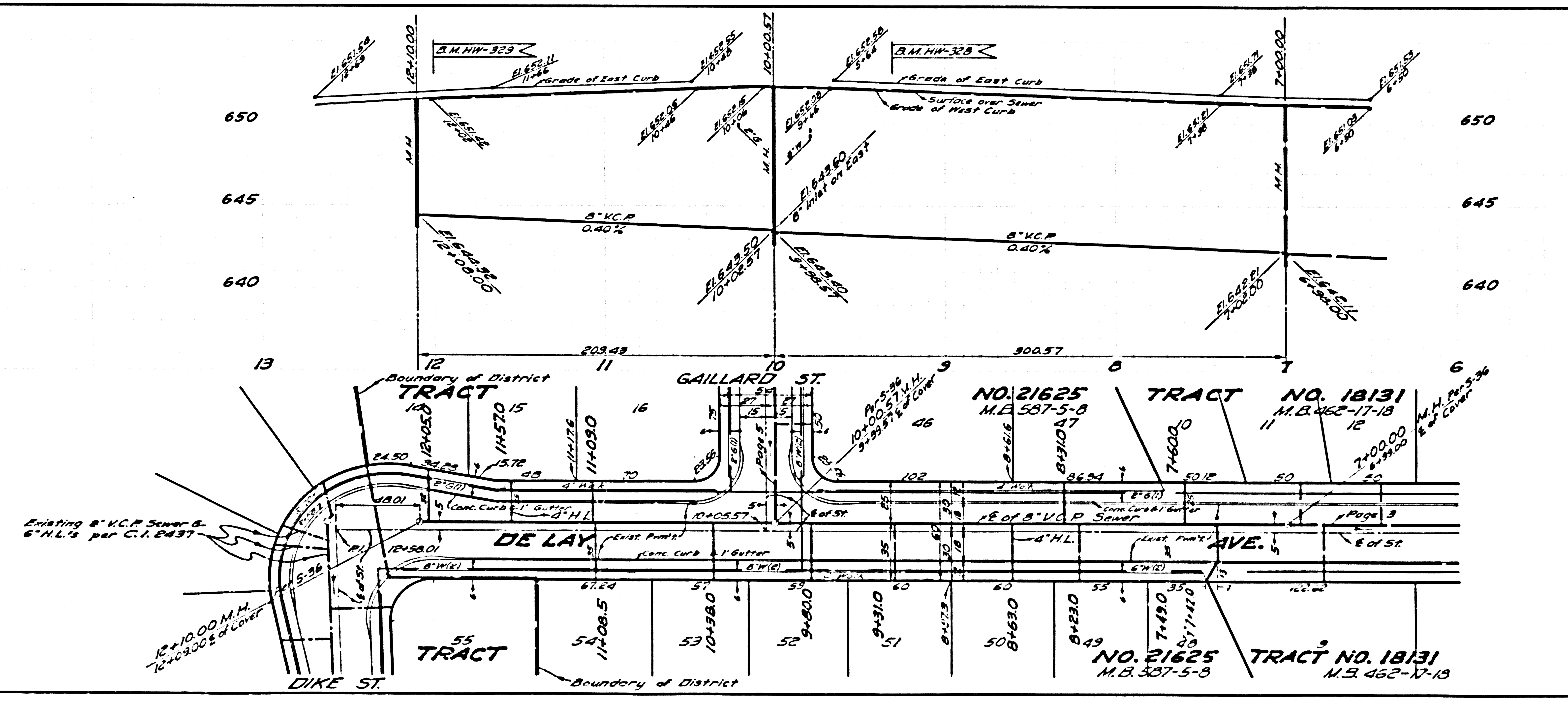


44038

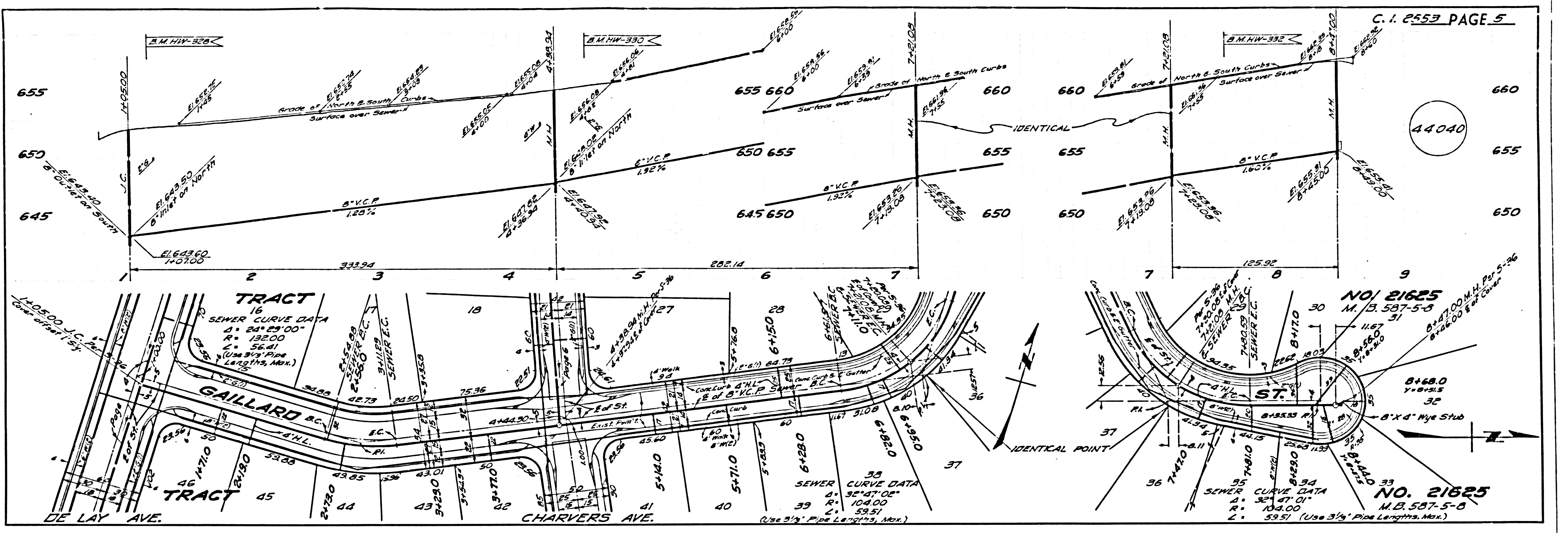


F.B. 3327 - 1-1-1920
M. J. 6048

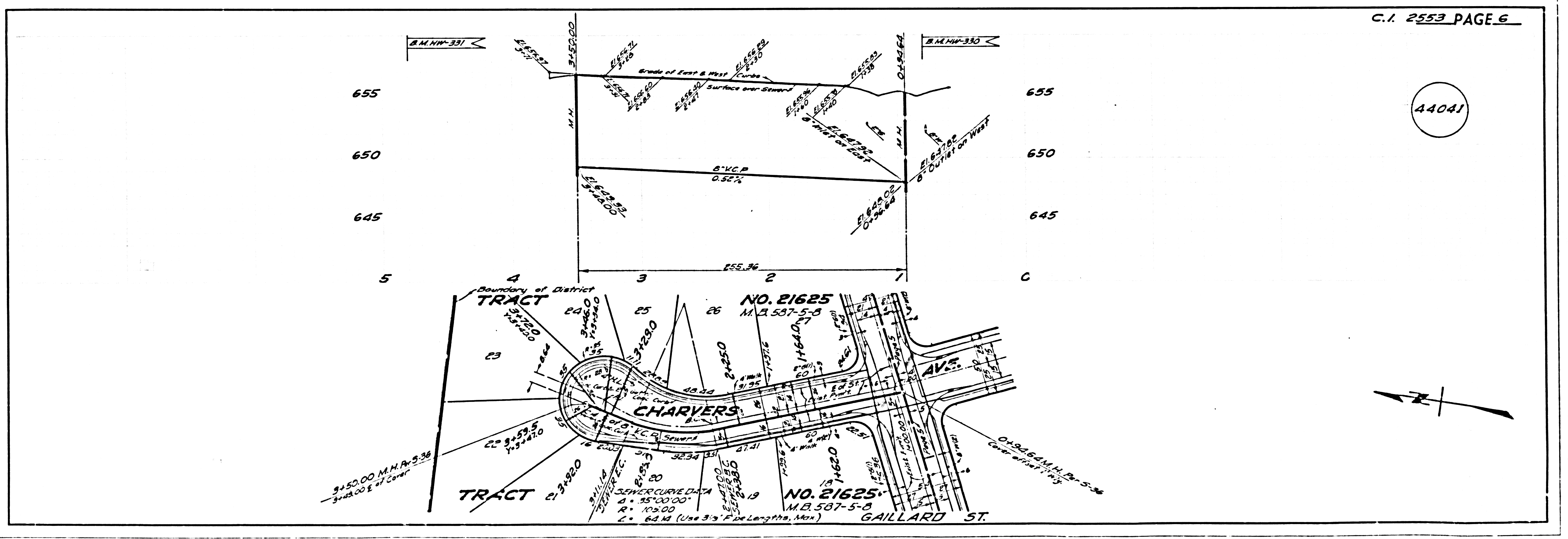
44039



F.B. 3327 - 1-1-1920
M. J. 6048 & 9486



F.B. 9927 - E - Pgs. 23, 24, 25, 26, 27
Town - M.J. 9427
X-5927



F.B. 9927 - E - Pgs. 25, 27
Town - M.J. 9427
X-5927