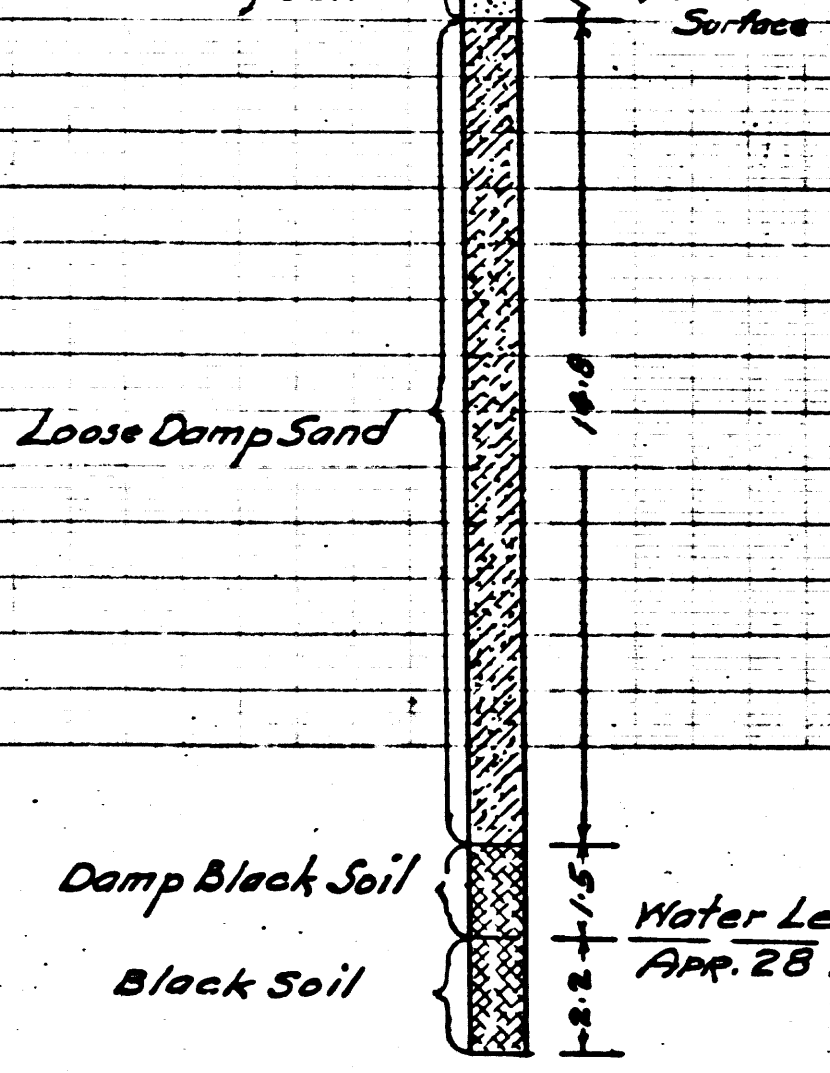


P.C. 2554 J.N.F. 436
PAGE 2

(16,940)

TEST BORING
AT INTERSECTION
OF HOODFORD ST AND ALEMAN AVE



B.M. - S.Y. 2254 L&T IN S.W. COR
CONC. WALK IN FRONT OF HOUSE #3638
ON DURFEE AVE 80' EAST OF INT'S W
OF COTE RD. & DURFEE AVE E.L. 137.238

B.M. - S.Y. 2291 L&T IN CENTER OF CONC
WALK TO HOUSE #3860 DURFEE AVE
168' EAST OF DURFEE 30' N OF 1/2 OF
FRIENDSHIP AVE 20.30' N OF BEGINNING OF
WALK (REF SET 1098 ELEV. 135.165)

- NOTE - NO REPRESENTATIVE OF THE COUNTY ENGINEER WILL SURVEY OR LAYOUT ANY PORTION OF THE WORK.
- THE OWNER OR HIS AUTHORIZED REPRESENTATIVE SHALL FURNISH THE COUNTY ENGINEER WITH GRADE SHEETS AND STATIONS FOR ALL HOUSE LATERALS AND Y BRANCHES AND SHALL PROVIDE STAKES FOR THESE AT THEIR PROPER LOCATIONS WITH STATIONING PLAINLY MARKED. ANY CHANGE IN LOCATION SHALL BE REQUESTED IN WRITING BY THE OWNER OR HIS REPRESENTATIVE.
- NO REVISIONS SHALL BE MADE IN THESE PLANS WITHOUT APPROVAL OF THE COUNTY ENGINEER.
1. USE STANDARD MANHOLE FRAMES AND COVERS 5'-0" DIA.
 2. USE STANDARD STRENGTH PIPE
 3. USE CEMENT MORTAR FOR ALL VITRIFIED CLAY PIPE JOINTS
 4. RESURFACE ALL TRENCH WITHIN TRAVEL AREA TO MEET L.A. COUNTY ROAD DEPT. REQUIREMENTS
 5. ENCASE FOUR FEET OF SEWER AT POINTS OF INTERFERENCE WITH RULES 5-6-119
 6. HOUSE LATERALS TO BE CONSTRUCTED WITH INVERTS AT PROPERTY LINE 6 FEET BELOW CURB GRADE
 7. ALL STRUCTURES SHALL BE BRICK SEWER STRUCTURES 5'-0" DIA.
 8. PROVIDE STAKES ON THE PROPERTY LINE OR PROPERTY LINE PRODUCED AT RIGHT ANGLES TO THE SEWER LINE AT THE CENTER LINE OF EACH MANHOLE.
 9. FOR ALLOWABLE LEAKAGE TEST USE FORMULA NO. 1
- SEE SPECS. SEC. 31.

WHITTIER - Bldg. Dist. II

PROFILE, ALIGNMENT AND GRADE OF
SANITARY SEWERS
TO BE CONSTRUCTED IN

TRACT NO 18718

PRIVATE CONTRACT NO 2554
M.S. 37
SHEET 1 OF 1 SHEET

SCALE VERT. 1" = 4'
HORIZ. 1" = 40'

PREPARED IN THE OFFICES OF
ADAMS & ELLIS
ENGINEERS
1-22-53 REG. C.E. NO. 832

NOTE FOR LEGEND SEE PLAN NO 5-8-64

ORDERS TO WHICH THIS IMPROVEMENTS TO BE CONSTRUCTED ARE SHOWN ON PLANS AND PROFILE GRADE PLOTTING FOR TOP OF CURBS CENTER LINE OF STREETS OR CENTER LINE OF ALLEY ARE SHOWN BY CIRCLES ON PROFILES. AT ALL POINTS BETWEEN DESIGNATED POINTS THE GRADE SHALL BE ESTABLISHED SO AS TO COMPLY TO A STRAIGHT LINE DRAWN BETWEEN SAID DESIGNATED POINTS. ELEVATIONS ARE IN FEET ABOVE U.S.C.S. DATUM OR MEAN SEA LEVEL.

THIS DRAWING AND THE DATA HEREON ARE HEREBY MADE A PART OF THE SPECIFICATIONS. WORK SHALL BE CONSTRUCTED ACCORDING TO SPECIFICATIONS ON FILE IN THE OFFICE OF THE COUNTY ENGINEER AND SHALL BE PROSECUTED ONLY IN THE PRESENCE OF THE COUNTY ENGINEER.

BEFORE WORK CAN BE STARTED THE CONTRACTOR MUST OBTAIN A PERMIT TO EXCAVATE IN COUNTY STREETS FROM THE L.A. COUNTY ROAD DEPT. 108 N. E. ST. AND MAKE A DEPOSIT WITH THE COUNTY ENGINEER 133 L.A. COUNTY ENGINEERING BUILDING SUFFICIENT TO COVER THE COST OF CONSTRUCTION INSPECTION AND RECORDED PLANS.

APPROVAL OF THIS PLAN BY THE COUNTY OF LOS ANGELES DOES NOT CONSTITUTE A REPRESENTATION AS TO THE ACCURACY OF THE LOCATION OF, OR THE EXISTENCE OR NON-EXISTENCE OF ANY UNDERGROUND UTILITY, PIPE OR STRUCTURE WITHIN THE LIMITS OF THIS PROJECT. THIS NOTE APPLIES TO ALL SHEETS.

COUNTY OF LOS ANGELES, CALIFORNIA

APPROVED, WILLIAM J. FOX, COUNTY ENGINEER

BY *A.H. Searcy*
CHIEF DEPUTY

APPROVED, A.M. RAWN
CHIEF ENGR. COLLEGIATE DIST. NO. 2

BY *R. S. [Signature]*
OFFICE ENGINEER

CHECKED BY *R. S. [Signature]*
OFFICE OF COUNTY ENGINEER, REG. C.E. NO. 7860

INDEX MAP
SCALE 1" = 600'

RC. 2554 J.N.F. 436

RECEIVED
JUL 20 1933

WOODFORD AVE
ALEMAN AVE
B.C. 5224 M.F. 436

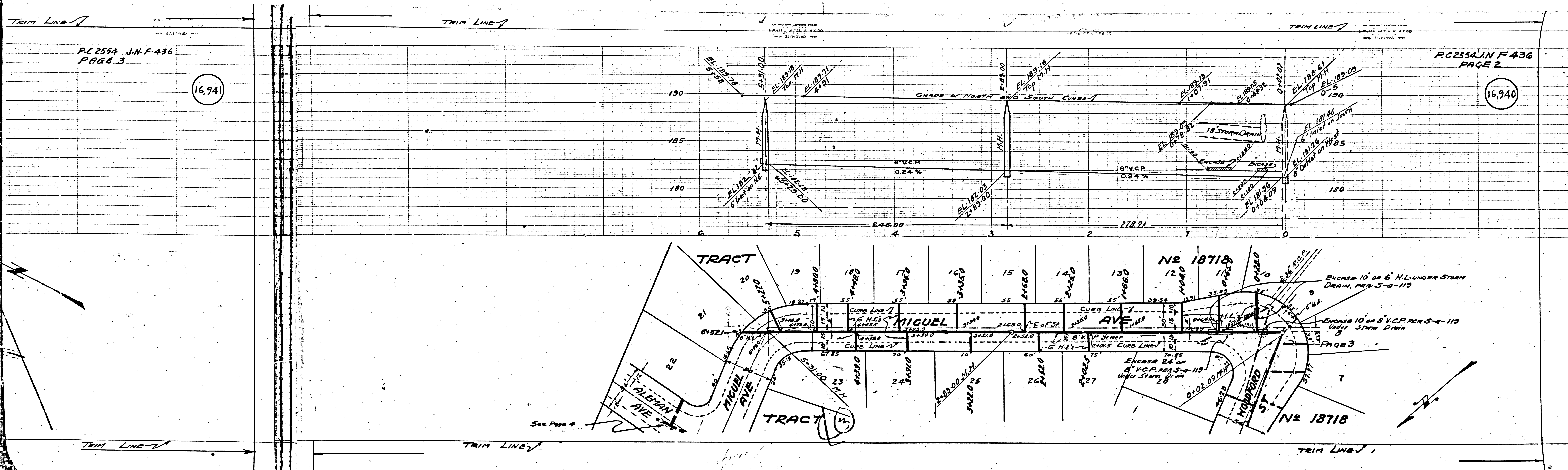
RE

PC 2554 J.N.F. 436
PAGE 3

(16,941)

PC 2554 J.N.F. 436
PAGE 2

(16,940)



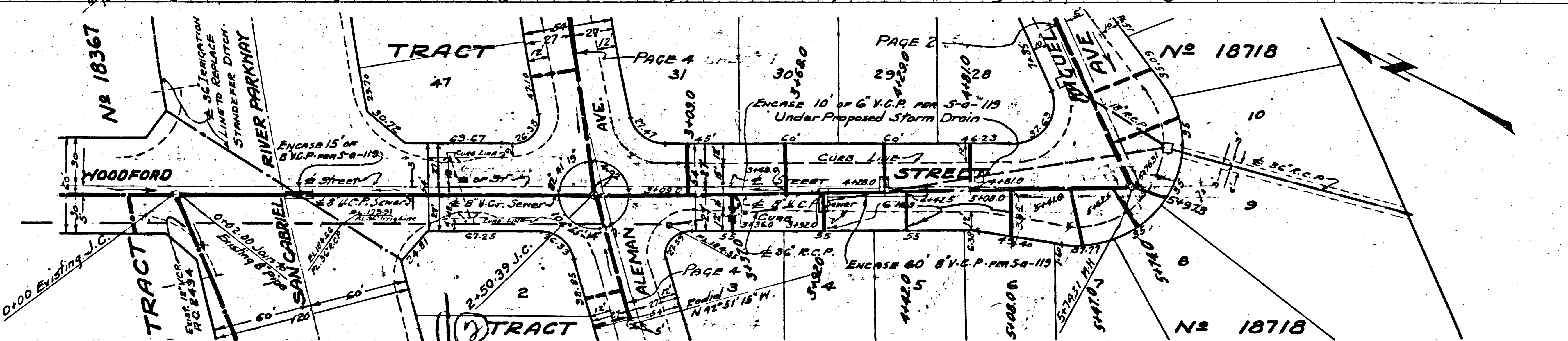
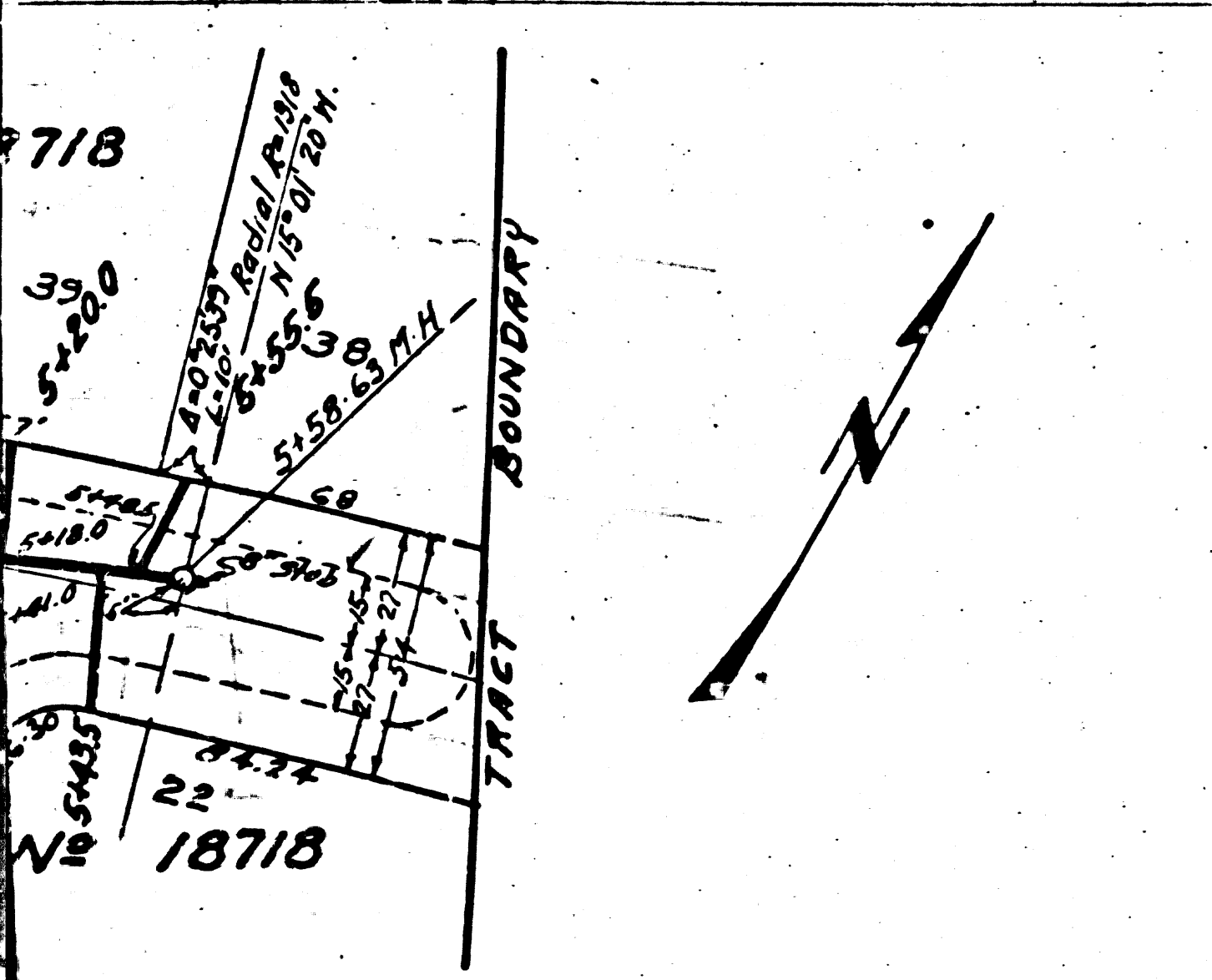
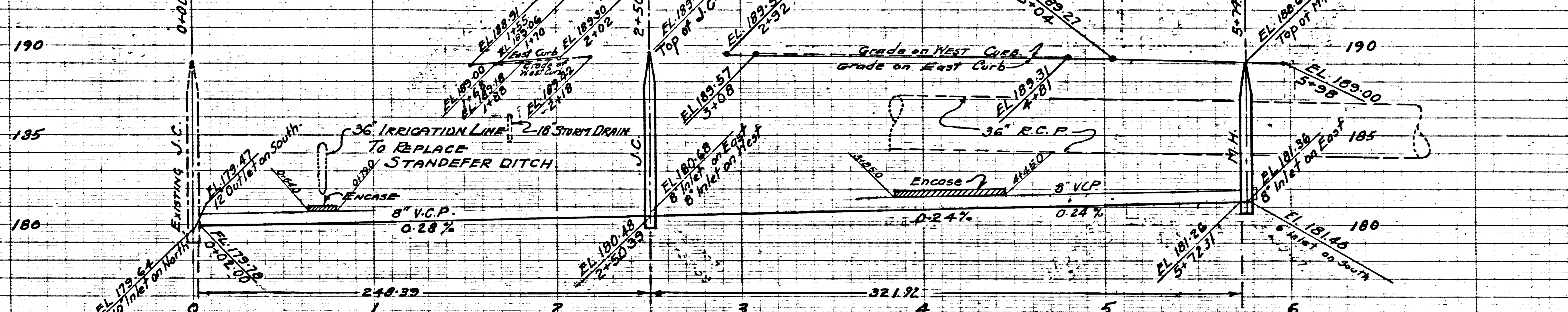
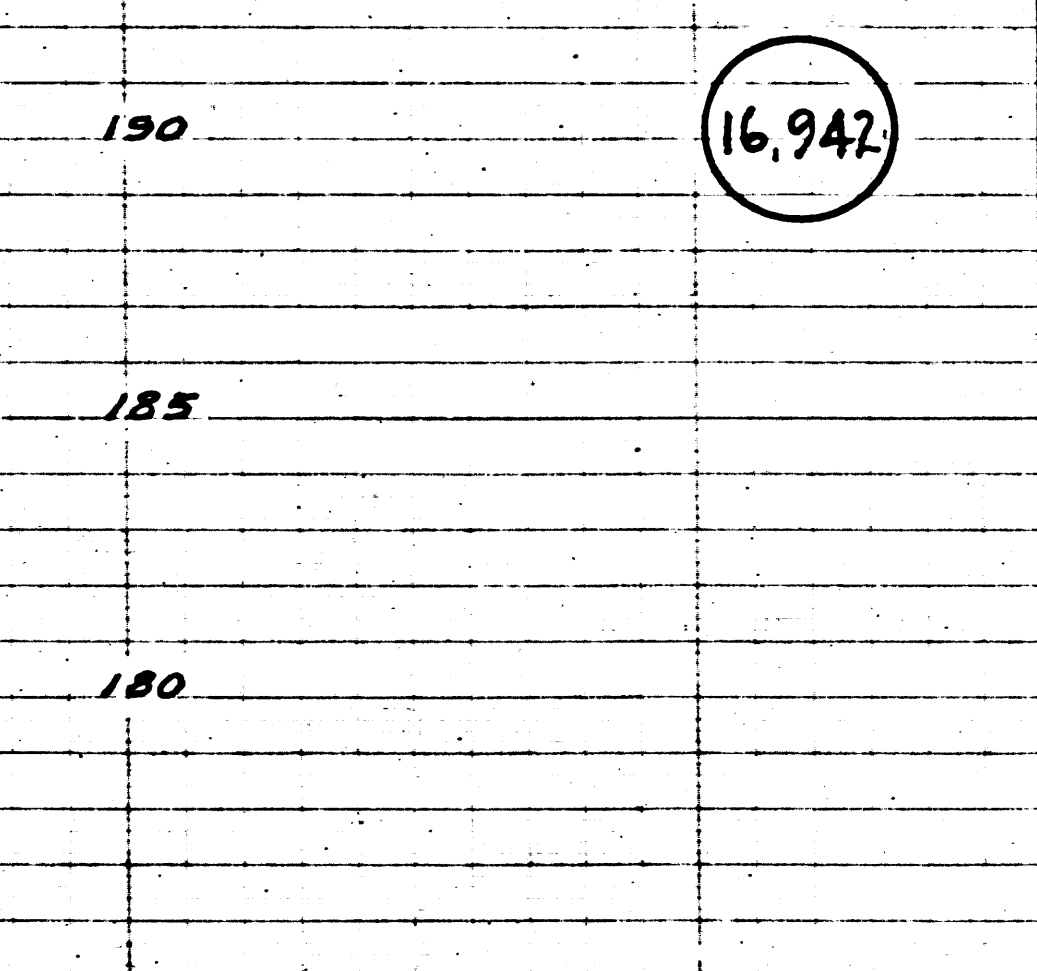
TRIM LINE 7

TRIM LINE 7

TRIM LINE 7

PC 2554 J.N.F.436
PAGE 4.

PC 2554 J.N.F.436
PAGE 3



TRIM LINE 7

TRIM LINE 7

TRIM LINE 7

PC 2554

MOORE RD
MIGUEL AVE
ALEMAN AVE

PC 2524 NW 1438

16,942

