

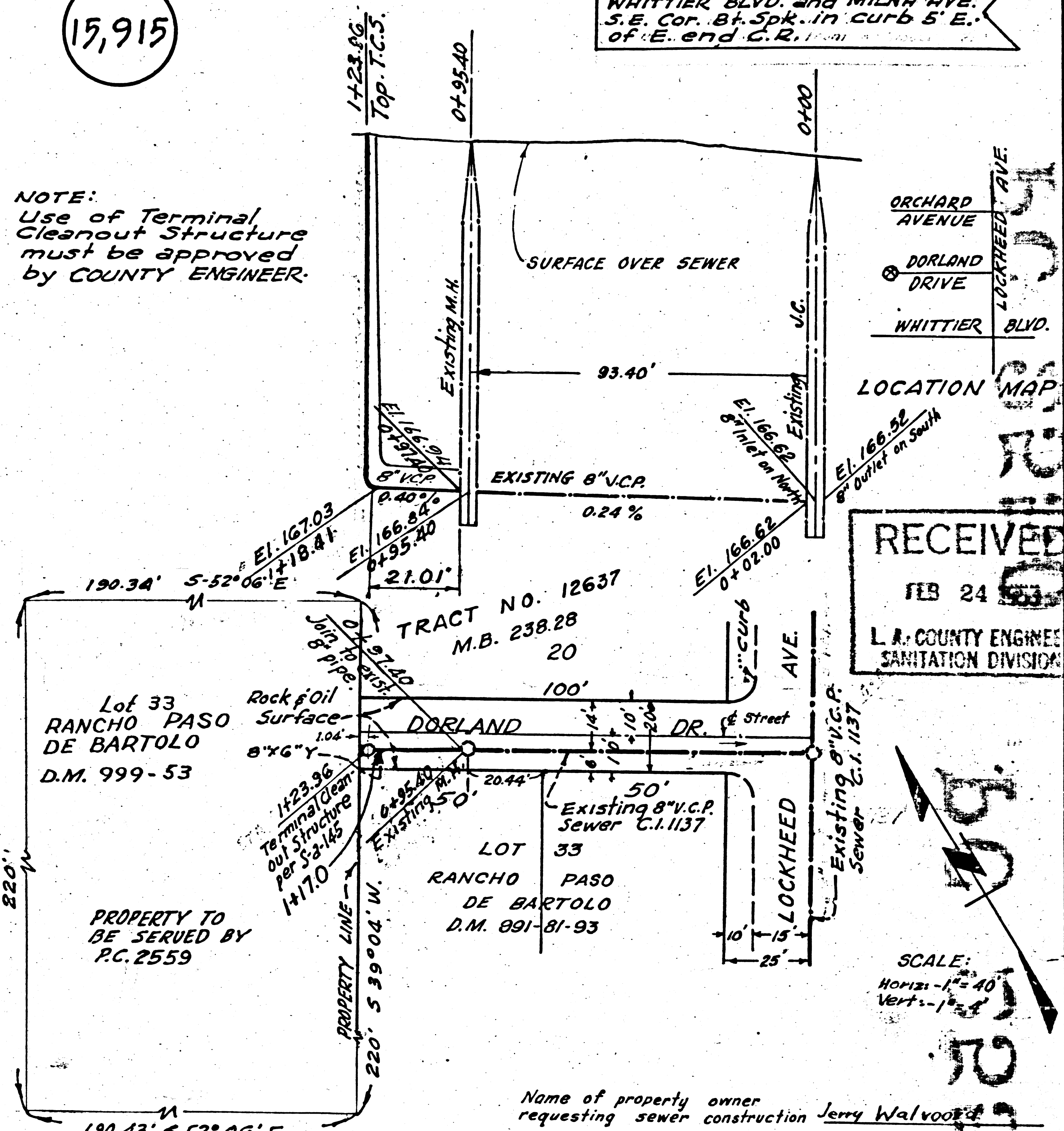
WHITTIER

15,915

B.M. 80-1 Elev. 177.029 F.B. 804-202  
WHITTIER BLVD. and MILNA AVE.  
S.E. Cor. 8 ft. Spk. in curb 5' E.  
of E. end C.R.

NOTE:  
Use of Terminal  
Cleanout Structure  
must be approved  
by COUNTY ENGINEER.

P.C. 2559



RECEIVED  
FEB 24 1953  
L. A. COUNTY ENGINEER  
SANITATION DIVISION

SCALE:  
HORIZ. - 1" = 40'  
VERT. - 1" = 4'

Name of property owner  
requesting sewer construction Jerry Walvoord

P.C. 2559 J.N. F44

Prepared By *Ralph B. Munnally*  
Reg. C.E. No. 8088

Approved *Richard E. Keibler* 2-20-53  
OFFICE OF COUNTY ENGINEER  
REG. C.E. No. 7860

DECEMBER 1952

NOTE:  
Work shall be constructed in accordance  
with the specifications on file in the office of the  
County Engineer and shall be prosecuted only in the  
presence of the County Engineer or his representative.  
The Engineer shall set stakes for main line  
sewer and supply the County Engineer with grade  
sheets.  
*Checked 3-10-53 W.L.A.*

JN 2100