

C 2560 J.N. F 442  
PAGE 2.

(17,841)

BM - R.R. SPIKE IN R.P. 219385A  
WEST SIDE TYLER 250' E N OF  
TRINNES AVE AS SHOWN ON TYLER  
AVE TRUNK SEWER PROFILE  
CO. SAN. DISTRICT NO. 16 ELEV 254.20

- NOTE - NO REPRESENTATIVE OF THE COUNTY ENGINEER WILL SURVEY OR LAYOUT ANY PORTION OF THE WORK. THE OWNER OR HIS AUTHORIZED REPRESENTATIVE SHALL FURNISH THE COUNTY ENGINEER WITH GRADE SHEETS AND STATIONS OF ALL HOUSE CONNECTIONS AND Y BRANCHES AND SHALL PROVIDE STAKES FOR THEM AT THEIR PROPER LOCATIONS WITH STATIONING PLAINLY MARKED. ANY CHANGE IN LOCATION SHALL BE REQUESTED IN WRITING BY THE OWNER OR HIS REPRESENTATIVE.
1. NO DEVIATIONS SHALL BE MADE IN THESE PLANS WITHOUT APPROVAL OF THE COUNTY ENGINEER.
  1. USE STANDARD MANHOLE FRAMES AND COVERS S-3-117
  2. USE STANDARD STRENGTH PIPE EXCEPT AS NOTED
  3. USE CEMENT MORTAR FOR ALL VITRIFIED CLAY PIPE JOINTS
  4. RESURFACE ALL TRENCH WITHIN PAVED AREA TO MEET L.A. COUNTY ROAD DEPT. REQUIREMENTS
  5. ENCASE FOUR FEET OF SEWER AT POINTS OF INTERFERENCE WITH POLES S-3-117
  6. HOUSE CONNECTIONS TO BE CONSTRUCTED WITH INVERTS AT PROPERTY LINE
  7. ALL STRUCTURES SHALL BE BRICK SEWER STRUCTURES S-4-104, EXCEPT AS NOTED
  8. PROVIDE STAKES ON THE PROPERTY LINE OR PROPERTY LINE PRODUCED AT RIGHT ANGLES TO THE SEWER LINE AT THE CENTER LINE OF EACH MANHOLE

PUENTE

PROFILE, ALIGNMENT AND GRADE OF  
SANITARY SEWERS  
TO BE CONSTRUCTED IN  
TYLER AVENUE  
FROM SLACK ROAD TO A POINT 430 FEET SOUTH.

RC 2560 J.N. F 442  
PAGE 1.

(17,840)

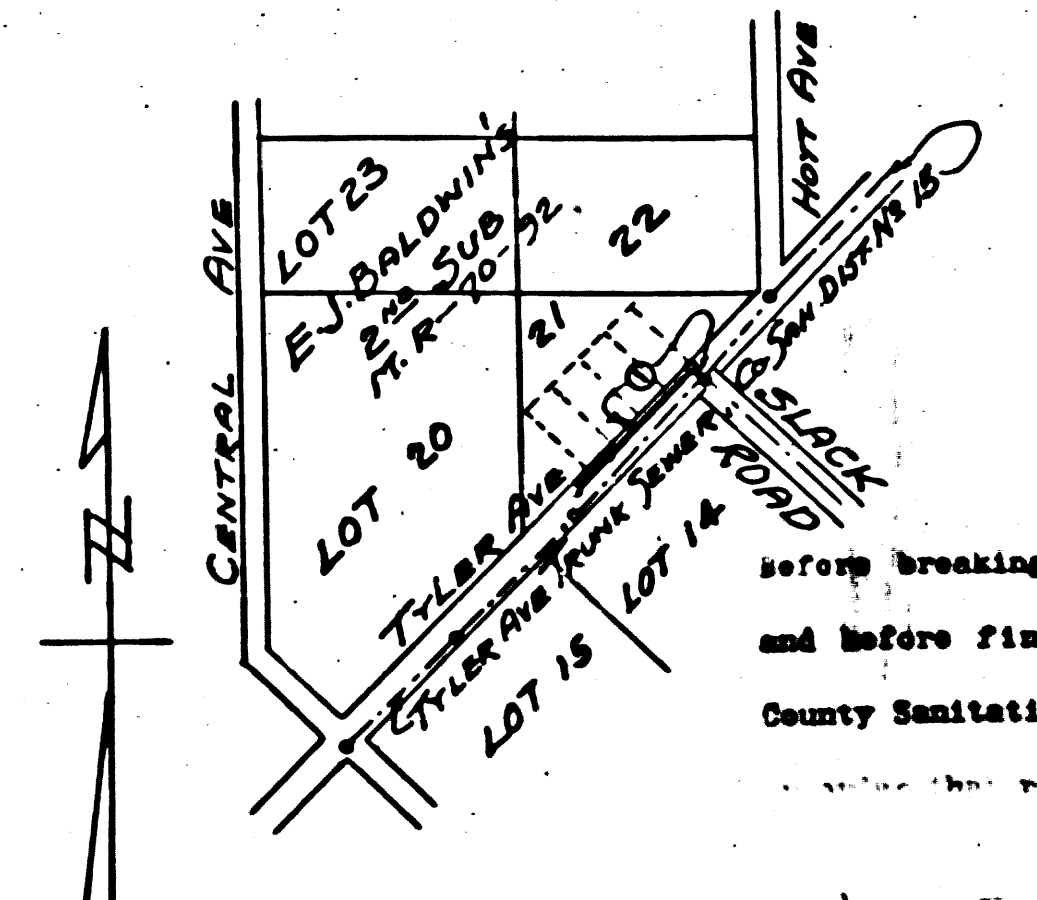
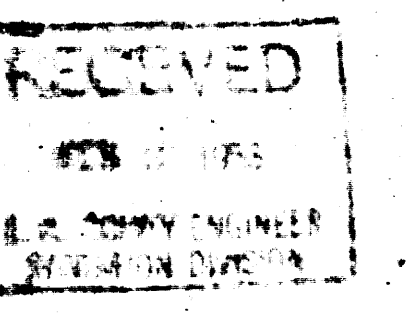
PRIVATE CONTRACT No 2560  
M.S. 37  
SHEET 1 OF 1 SHEET  
SCALE: VERT. 1" = 4'  
HORIZ. 1" = 40'  
DEC. 1952

PREPARED IN THE OFFICES OF  
ADAMS & ELLS  
ENGINEERS  
BY: *Richard E. Kahan* LICENSED CIVIL ENGINEER

NOTE FOR LEGEND SEE PLAN No 5-9-54  
GRADES TO WHICH THIS IMPROVEMENT IS TO BE CONSTRUCTED ARE SHOWN ON PLANS AND PROFILES. GRADE POINTS ON TOP OF CURBS, CENTER LINE OF STREETS OR CENTER LINE OF ALLEYS ARE SHOWN BY CIRCLES ON PROFILES. AT ALL POINTS BETWEEN DESIGNATED POINTS THE GRADE SHALL BE ESTABLISHED SO AS TO CONFORM TO A STRAIGHT LINE BETWEEN SAID DESIGNATED POINTS. ELEVATIONS ARE IN FEET ABOVE U.S.C. DATUM OR MEAN SEA LEVEL.

THIS DRAWING AND THE DATA HEREON ARE HEREBY MADE A PART OF THE SPECIFICATIONS. CONTRACTORS SHALL BE CONSIDERED AS CONSTRUCTING ACCORDING TO SPECIFICATIONS ON FILE IN THE OFFICE OF THE COUNTY ENGINEER AND SHALL BE PROSECUTED ONLY IN THE PRESENCE OF THE COUNTY ENGINEER. WORKERS HOOK UP CAN BE STARTED THE CONTRACTOR MUST OBTAIN A PERMIT TO EXCAVATE IN COUNTY STREETS FROM THE L.A. COUNTY ROAD DEPT. 208 W. 2<sup>ND</sup> ST AND MAKE A DEPOSIT WITH THE COUNTY ENGINEER, 733 L.A. COUNTY ENGINEERING BUILDING SUPERVISOR TO CORNER THE DIST OF CONSTRUCTION, INTERSECTION AND SECOND PLANS.

APPROVAL OF THIS PLAN BY THE COUNTY OF LOS ANGELES DOES NOT CONSTITUTE A REPRESENTATION AS TO THE ACCURACY OF THE LOCATION OF OR THE EXISTENCE OR NON-EXISTENCE OF ANY UNDERGROUND UTILITY, PIPE, OR STRUCTURE WITHIN THE LIMITS OF THIS PROJECT. THIS NOTE APPLIES TO ALL SHEETS.



INDEX MAP  
Scale 1" = 60'  
RC 2560 J.N. F 442

APPROVED WILLIAM J. FOX COUNTY ENGINEER  
BY: *Richard E. Kahan* CHIEF DEPUTY  
CHECKED BY: *Richard E. Kahan* 1-22-53  
OFFICE OF COUNTY ENGINEER - R.E.C. No. 7860

APPROVED A.M. RAIN  
CHIEF ENGR. CO. SAN. DIST. A & IS  
BY: *Richard E. Kahan* CHIEF DEPUTY  
CHECKED BY: *Richard E. Kahan* 1-22-53  
OFFICE OF COUNTY ENGINEER - R.E.C. No. 7860

Checked 2-20-53 *McLann*

TYLER AVE

RC 2560 J.N. F 442

① SAN. F. W. 0325.06  
 ① TAYLER AVE

