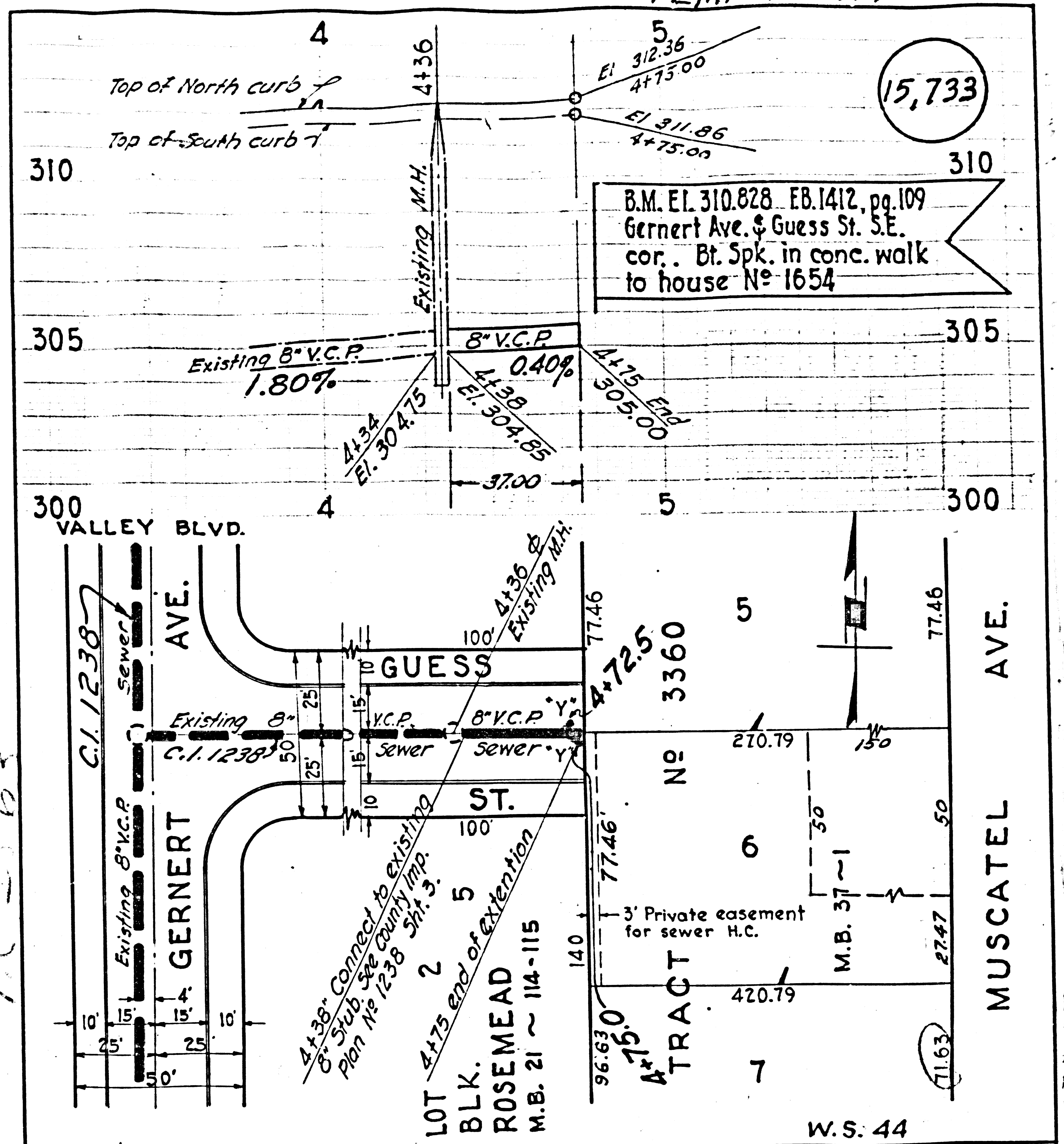


TEMPLE CITY



B.M. EL. 310.828 EB. 1412, pg. 109
 Gernert Ave. & Guess St. S.E.
 cor. . Bt. Spk. in conc. walk
 to house No 1654

15,733

C.I. 1238

LOT 2
 BLK. ROSEMEAD
 M.B. 21 ~ 114-115

TRACT No 3360

W.S. 44

NOTE:
 WORK SHALL BE CONSTRUCTED IN ACCORDANCE WITH THE SPECIFICATIONS ON FILE IN THE OFFICE OF THE COUNTY ENGINEER AND SHALL BE PROSECUTED ONLY IN THE PRESENCE OF THE COUNTY ENGINEER OR HIS REPRESENTATIVE.
 THE ENGINEER SHALL SET STAKES FOR MAIN LINE SEWER AND SUPPLY THE COUNTY ENGINEER WITH GRADE SHEETS.

P.C. 2563 J.N.F446

PREPARED BY *Ralph Schoonbeek*
 R.E. No 4408

NAME OF OWNER REQUESTING SEWER CONNECTION
A. V. SAUNDERS

APPROVED BY *H. L. Swisher*
 OFFICE OF THE COUNTY ENGINEER
 R.E. No 6412 1/8/53

checked 1-28-53 *W. L. Laren*

JAN. 1953