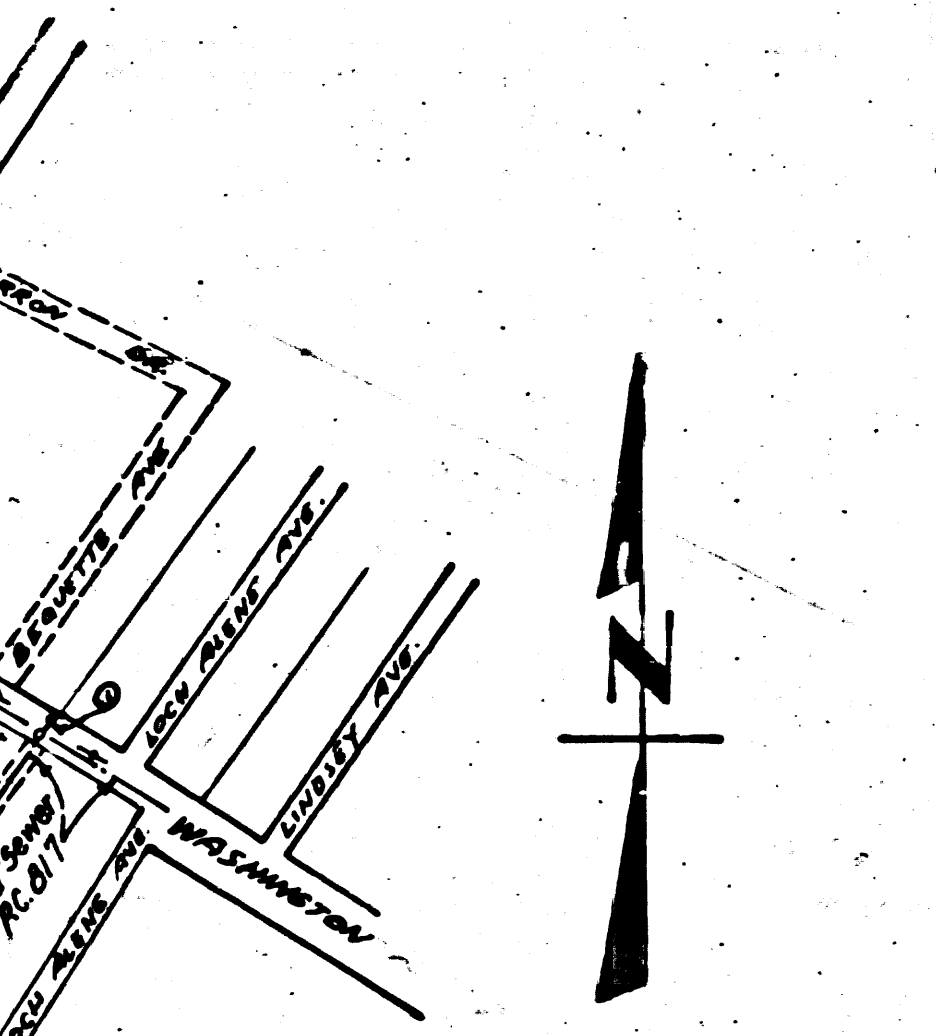


SYBM 765-2V 1666 Ely 16163  
Lead 1/4 mi to E curb of  
Rosemead Blvd Washington  
 Blvd. 90° E. S. of B.C.R. in  
front of electronic  
Signal box.

- NOTE:**  
NO REPRESENTATIVE OF THE COUNTY ENGINEER WILL SURVEY OR LAY OUT ANY PORTION OF THE WORK.  
THE OWNER OR HIS AUTHORIZED REPRESENTATIVE SHALL FURNISH THE COUNTY ENGINEER WITH GRADE SHEETS AND STATIONS FOR ALL HOUSE CONNECTIONS AND V BRANCHES AND SHALL PROVIDE STAKES FOR THEM AT THEIR PROPER LOCATIONS WITH STATIONING PLAINLY MARKED. ANY CHANGE IN LOCATION SHALL BE REQUESTED IN WRITING BY THE OWNER OR HIS REPRESENTATIVE.  
NO REVISIONS SHALL BE MADE IN THESE PLANS WITHOUT APPROVAL OF THE COUNTY ENGINEER.
1. USE STANDARD FRAME FRAMES AND CHAINS, 5-8-17
  2. USE STANDARD STRENGTH PIPE EXCEPT AS NOTED
  3. USE CEMENT MORTAR FOR ALL VITRIFIED CLAY PIPE JOINTS.
  4. RESURFACE ALL TRENCH WITHIN PAVED AREA TO MEET L.A. COUNTY ROAD DEPT. REQUIREMENTS.
  5. ENCASE FOUR FEET OF SEWER AT POINTS OF INTERFERENCE WITH PALES, 5-8-119.
  6. HOUSE CONNECTIONS TO BE CONSTRUCTED WITH INVERTS AT PROPERTY LINE FEET BELOW CURB GRADE.
  7. ALL STRUCTURES SHALL BE BRICK SEWER STRUCTURES, 5-8-104.
  8. PROVIDE STAKES ON THE PROPERTY LINES OR PROPERTY LINES PRODUCED AT RIGHT ANGLES TO THE SEWER LINE AT THE CENTER LINE OF EACH MANHOLE.
  9. For leakage test use Formula No. 1, Spec's. Sec. 51



INDEX MAP  
Scale 1"=600'  
PC 2567 J.N.F.452

WHITTIER

**PROFILE, ALIGNMENT, AND GRADE OF  
SANITARY SEWERS  
TO BE CONSTRUCTED IN  
WASHINGTON BOULEVARD  
NORTHEAST OF  
BONNIE VAIL AVENUE**

P.C. 2567  
J.N.F.452

15,869

**PRIVATE CONTRACT NO. 2567**  
W.S. 36  
SHEET 1 OF 1 SHEETS  
January 14, 1953

PREPARED IN THE OFFICES OF  
RALPH B. NUNNELLEY  
BY Ralph B. Nunnelley

FOR LEGEND SEE PLAN NO. 5-8-64

RECEIVED  
FEB 4 1953  
L.A. COUNTY ENGINEER'S OFFICE

**NOTE:**  
GRADES TO WHICH THIS IMPROVEMENT IS TO BE CONSTRUCTED ARE SHOWN ON PLANS AND PROFILE GRADE POINTS FOR TOP OF CURB, CENTER LINE OF STREETS OR CENTER LINE OF ALLEY ARE SHOWN BY CIRCLES ON PROFILES. AT ALL POINTS BETWEEN DESIGNATED POINTS THE GRADE SHALL BE ESTABLISHED SO AS TO CONFORM TO A SMOOTH LINE DRAWN BETWEEN SAID DESIGNATED POINTS. ELEVATIONS ARE IN FEET ABOVE U.S.C. & G.S. DATUM OR MEAN SEA LEVEL.  
THIS DRAWING AND THE DATA HEREON ARE HEREBY MADE A PART OF THE SPECIFICATIONS. WORK SHALL BE CONSTRUCTED ACCORDING TO SPECIFICATIONS ON FILE IN THE OFFICE OF THE COUNTY ENGINEER AND SHALL BE PROSECUTED ONLY IN THE PRESENCE OF THE COUNTY ENGINEER. BEFORE WORK CAN BE STARTED, THE CONTRACTOR MUST OBTAIN A PERMIT TO EXCAVATE IN THE EAST OF CONSTRUCTION INSPECTION AND RECORD PLANS.  
APPROVAL OF THIS PLAN BY THE COUNTY OF LOS ANGELES DOES NOT CONSTITUTE A REPRESENTATION AS TO THE ACCURACY OF THE LOCATION OF, OR THE EXISTENCE OR NON-EXISTENCE OF ANY UNDERGROUND UTILITY, PIPE, OR STRUCTURE WITHIN THE LIMITS OF THIS PROJECT. THIS NOTE APPLIES TO ALL SHEETS.

COUNTY OF LOS ANGELES, CALIFORNIA

APPROVED, WILLIAM J. FOX, COUNTY ENGINEER  
BY William J. Fox  
CHIEF DEPUTY

APPROVED, A.M. RAWN, CHIEF ENGR. OF SAN. DIST. NO. 2  
BY A.M. Rawn  
OFFICE ENGINEER

CHECKED BY: H.L. Smiley 1-14-53  
OFFICE OF COUNTY ENGINEER, REG. C.E. No. 2744

Checked 2-24-53 McLennan