

**LOMITA - BLDG. DIST. 7-L**

PROFILE, ALIGNMENT, AND GRADE OF  
**SANITARY SEWERS**  
 TO BE CONSTRUCTED IN  
**TRACT NO. 14901**

PC.2578 J.N.F.463  
 Page 1.

(16,565)

F463

566

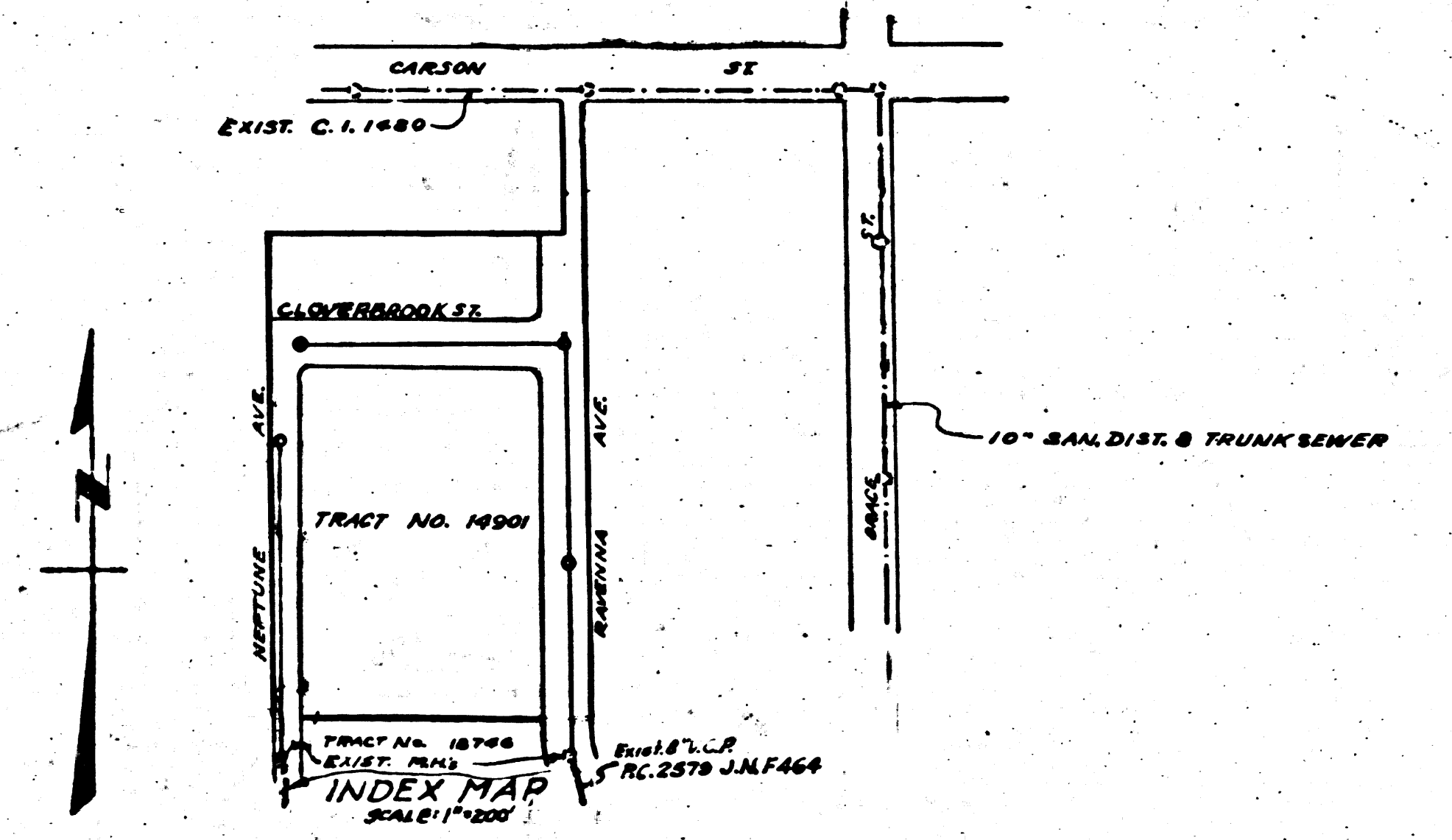
B.M. 37493 ELEV. 24.223  
 BOLT IN CONC. WALK 2'0" S OF E OF  
 CARSON ST 2'25" E.W. & OF GRADE 97.

- NOTE: NO REPRESENTATIVE OF THE COUNTY ENGINEER WILL SURVEY OR LAY OUT ANY PORTION OF THE WORK.  
 THE OWNER OR HIS AUTHORIZED REPRESENTATIVE SHALL FURNISH THE COUNTY ENGINEER WITH GRADE SHEETS AND STATIONS FOR ALL HOUSE CONNECTIONS AND Y BRANCHES AND SHALL PROVIDE STAKES FOR THEM AT THEIR PROPER LOCATIONS WITH STATIONING PLAINLY MARKED. ANY CHANGE IN LOCATION SHALL BE REQUESTED IN WRITING BY THE OWNER OR HIS REPRESENTATIVE.  
 NO REVISIONS SHALL BE MADE IN THESE PLANS WITHOUT APPROVAL BY THE COUNTY ENGINEER.
1. USE STANDARD MANHOLE FRAMES AND COVERS, 5'-8"-IT
  2. USE STANDARD STRENGTH PIPE EXCEPT AS NOTED.
  3. USE CEMENT MORTAR FOR ALL VITRIFIED CLAY PIPE JOINTS.
  4. RESURFACE ALL TRENCH WITHIN 10' OF HIGHWAY TO MEET L.A. COUNTY ROAD DEPT. REQUIREMENTS.
  5. ENCASE FOUR FEET OF SEWER AT POINTS OF INTERFERENCE WITH POLES, 5'-8"-119.
  6. HOUSE CONNECTIONS TO BE CONSTRUCTED WITH INVERTS AT PROPERTY LINE 6 FEET BELOW CURB GRADE.
  7. ALL STRUCTURES SHALL BE BRICK SEWER STRUCTURES, 5'-8"-104.
  8. PROPOSE STAKES ON THE PROPERTY LINES OR PROPERTY LINES PRODUCED AT RIGHT ANGLES TO THE SEWER LINE AT THE CENTER LINE OF EACH MANHOLE.
  9. FOR ALLOWABLE LEAKAGE TEST USE FORMULA NO. 1 SPEC'S. SEC. 51.

**PRIVATE CONTRACT NO. 2578**  
 W. S. 28  
 SHEET 1 OF 1 SHEET  
 SCALE: VERT. 1" = 4'  
 HORIZ. 1" = 40'  
 DECEMBER, 1952  
 PREPARED IN THE OFFICES OF  
 CALDWELL, MASON & MUNTZ ARCHITECT & ENGINEERS  
 BY *Ernest H. Caldwell*  
 FOR LEGEND SEE PLAN NO. S-a-64

(3)

| SHEET NO. | PAGES |
|-----------|-------|
| 1         | 1-3   |
|           |       |
|           |       |
|           |       |
|           |       |



PC.2578 J.N.F.463

NOTE: GRADES TO WHICH THIS IMPROVEMENT IS TO BE CONSTRUCTED ARE SHOWN ON PLANS AND PROFILES. GRADE POINTS FOR TOP OF CURB, CENTER LINE OF STREETS, OR CENTER LINE OF ALLEY ARE SHOWN BY CIRCLES ON PROFILES. AT ALL POINTS BETWEEN DESIGNATED POINTS THE GRADE SHALL BE ESTABLISHED SO AS TO CONFORM TO A STRAIGHT LINE DRAWN BETWEEN SAID DESIGNATED POINTS. ELEVATIONS ARE IN FEET ABOVE U.S.S. DATUM OR MEAN SEA LEVEL.  
 THIS DRAWING AND THE DATA HEREON ARE HEREBY MADE A PART OF THE SPECIFICATIONS. WORK SHALL BE CONSTRUCTED ACCORDING TO SPECIFICATIONS ON FILE IN THE OFFICE OF THE COUNTY ENGINEER AND SHALL BE PROSECUTED ONLY IN THE PRESENCE OF THE COUNTY ENGINEER. BEFORE WORK CAN BE STARTED THE CONTRACTOR MUST OBTAIN A PERMIT TO EXCAVATE IN COUNTY STREETS FROM THE L.A. COUNTY ROAD DEPT., 100 W. 2nd ST. AND MAKE A DEPOSIT WITH THE COUNTY ENGINEER, 733 L.A. COUNTY ENGINEERING BUILDING, SUFFICIENT TO COVER THE COST OF CONSTRUCTION INSPECTION AND RECORD PLANS.  
 APPROVAL OF THIS PLAN BY THE COUNTY OF LOS ANGELES DOES NOT CONSTITUTE A REPRESENTATION AS TO THE ACCURACY OF THE LOCATION OF OR THE EXISTENCE OR NON-EXISTENCE OF ANY UNDERGROUND UTILITY, PIPE, OR STRUCTURE WITHIN THE LIMITS OF THIS PROJECT. THIS NOTE APPLIES TO ALL SHEETS.

**COUNTY OF LOS ANGELES, CALIFORNIA**

APPROVED, WILLIAM J. FOX, COUNTY ENGINEER  
 BY *W. J. Fox*  
 CHIEF DEPUTY

APPROVED, A.M. RAWN, CHIEF ENGR. 40 SAN. DIST. NO. 6  
 BY *A.M. Rawn*  
 DEPUTY ENGINEER

CHECKED BY *Richard E. Nelson* 2-19-53  
 OFFICE OF COUNTY ENGINEER, REG. C.E. No. 7860

87X

RECEIVED  
 MAR 24 1953  
 L.A. COUNTY  
 SANITATION  
 PC 2578 J.N.F.463



