

LOMITA

PROFILE, ALIGNMENT, AND GRADE OF  
SANITARY SEWERS  
TO BE CONSTRUCTED IN

PC-2579 J.N.F464  
Page 1.

TRACT NO. 18746

(16,321)

PRIVATE CONTRACT NO 2579  
W. S. 28  
SHEET 1 OF 1 SHEET

SCALE: VERT. 1"=4'  
HORIZ. 1"=40'

DECEMBER, 1952  
PREPARED IN THE OFFICES OF  
CALDWELL, MASON & HUNTZ ARCHITECT & ENGINEERS  
BY *[Signature]* No. 22-3746  
FOR LEGEND SEE PLAN NO. 5-a-64

NOTE:  
GRADES TO WHICH THIS IMPROVEMENT IS TO BE CONSTRUCTED ARE SHOWN ON PLANS AND  
PROFILES. GRADE POINTS FOR TOP OF CURB, CENTER LINE OF STREETS, OR CENTER LINE OF ALLEY ARE  
SHOWN BY CIRCLES ON PROFILES. AT ALL POINTS BETWEEN DESIGNATED POINTS THE GRADE SHALL BE  
ESTABLISHED SO AS TO CONFORM TO A STRAIGHT LINE DRAWN BETWEEN SAID DESIGNATED POINTS.  
ELEVATIONS ARE IN FEET ABOVE U.S.C. DATUM OR MEAN SEA LEVEL.  
THIS DRAWING AND THE DATA HEREON ARE HEREBY MADE A PART OF THE SPECIFICATIONS  
WORK SHALL BE CONSTRUCTED ACCORDING TO SPECIFICATIONS ON FILE IN THE OFFICE OF THE  
COUNTY ENGINEER AND SHALL BE PROSECUTED ONLY IN THE PRESENCE OF THE COUNTY ENGINEER  
BEFORE WORK CAN BE STARTED, THE CONTRACTOR MUST OBTAIN A PERMIT TO EXCAVATE IN  
COUNTY STREETS FROM THE L.A. COUNTY ROAD DEPT., 108 W. 2ND ST AND MAKE A DEPOSIT  
WITH THE COUNTY ENGINEER, 733 L.A. COUNTY ENGINEERING BUILDING, SUFFICIENT TO COVER  
THE COST OF CONSTRUCTION INSPECTION AND RECORD PLANS.  
APPROVAL OF THIS PLAN BY THE COUNTY OF LOS ANGELES DOES NOT CONSTITUTE  
A REPRESENTATION AS TO THE ACCURACY OF THE LOCATION OF, OR THE EXISTENCE OR  
NON-EXISTENCE OF, ANY UNDERGROUND UTILITY, PIPE, OR STRUCTURE WITHIN THE LIMITS  
OF THIS PROJECT. THIS NOTE APPLIES TO ALL SHEETS.

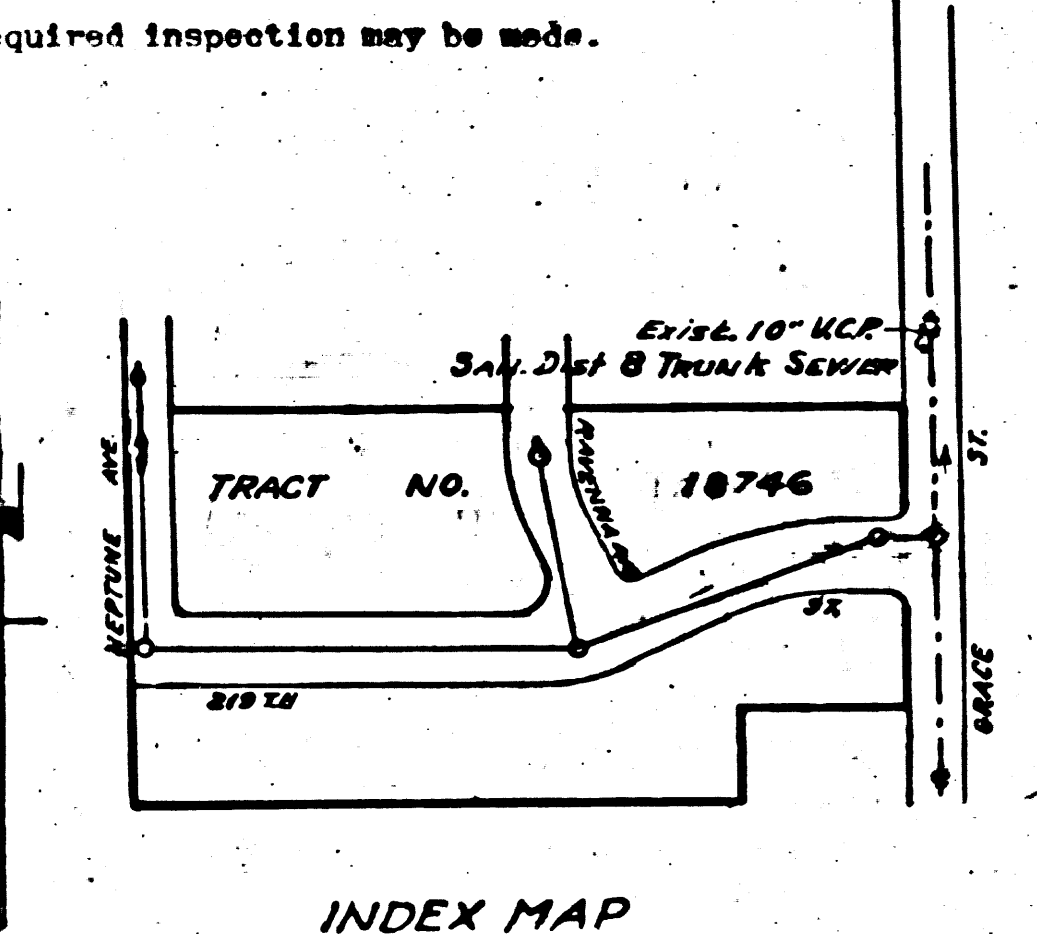
COUNTY OF LOS ANGELES, CALIFORNIA

APPROVED, WILLIAM J. FOX, COUNTY ENGINEER  
BY *[Signature]* CHIEF DEPUTY  
APPROVED, A.M. RAWN, CHIEF ENGR. CO. SAN. DIST. NO. 8  
BY *[Signature]* OFFICE ENGINEER  
CHECKED BY *[Signature]* 2-13-53  
OFFICE OF COUNTY ENGINEER, REG. C.E. No. 2860

- NOTE:  
NO REPRESENTATIVE OF THE COUNTY ENGINEER WILL SURVEY OR LAY OUT ANY  
PORTION OF THE WORK.  
THE OWNER OR HIS AUTHORIZED REPRESENTATIVE SHALL FURNISH THE COUNTY  
ENGINEER WITH GRADE SHEETS AND STATIONS FOR ALL HOUSE CONNECTIONS AND Y BRANCHES  
AND SHALL PROVIDE STAKES FOR THEM AT THEIR PROPER LOCATIONS WITH STATIONING  
PLAINLY MARKED. ANY CHANGE IN LOCATION SHALL BE REQUESTED IN WRITING BY THE  
OWNER OR HIS REPRESENTATIVE.  
NO REVISIONS SHALL BE MADE IN THESE PLANS WITHOUT APPROVAL OF THE COUNTY ENGINEER.
1. USE STANDARD MANHOLE FRAMES AND COVERS, S-A-117 EXCEPT AS NOTED
  2. USE STANDARD STRENGTH PIPE EXCEPT AS NOTED
  3. USE CEMENT MORTAR FOR ALL FINISHED CLAY PIPE JOINTS
  4. RESURFACE ALL TRENCH WITHIN PAVED AREA TO MEET L.A. COUNTY ROAD DEPT. REQUIREMENTS.
  5. ENCASE FOUR FEET OF SEWER AT POINTS OF INTERFERENCE WITH POLES, S-A-119.
  6. HOUSE CONNECTIONS TO BE CONSTRUCTED WITH INVERTS AT PROPERTY LINE 6 FEET BELOW CURB GRADE.
  7. ALL STRUCTURES SHALL BE BRICK SEWER STRUCTURES, S-A-104 EXCEPT AS NOTED
  8. PROVIDE STAKES ON THE PROPERTY LINES OR PROPERTY LINES PRODUCED AT RIGHT ANGLES TO THE SEWER LINE AT THE CENTER LINE OF EACH MANHOLE.
  9. FOR ALLOWABLE LEAKAGE TEST USE FORMULA No. 7, SPEC'S. SEC. 51

before breaking into any existing structure  
and before final acceptance of this work,  
County Sanitation District should be notified  
in order that required inspection may be made.

SHEET NO.	PAGES
1	1-2



INDEX MAP  
SCALE: 1"=100'  
RC. 2579 J.N.F464

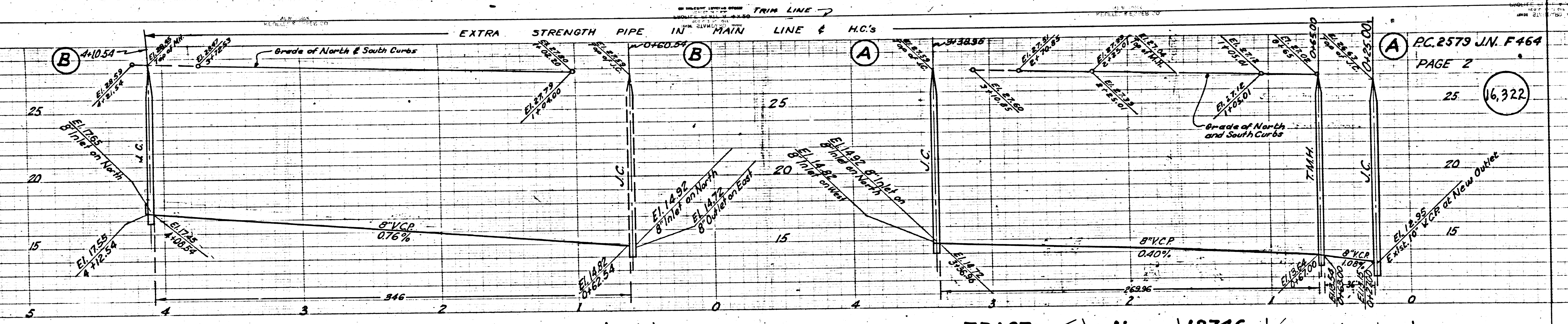
B.M. 37 489 ELEV. 94.227  
BOLT IN CONG. WALL 2.60'S OF E OF  
CARSON ST. 2.25' E. OF E OF GRADE

REVISION CHECKED  
BY *[Signature]* 4-20-53  
OFFICE OF COUNTY ENGINEER, REG. C.E. No. 2860

Checked 5-14-53 *[Signature]*

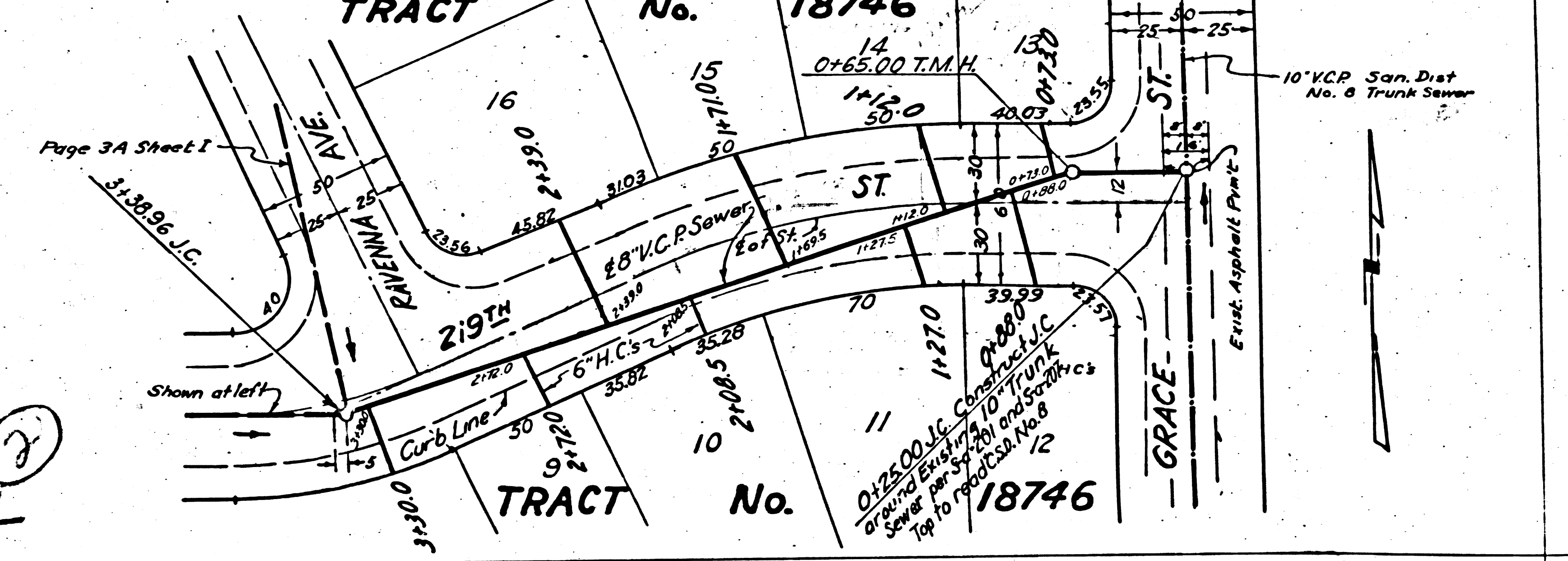
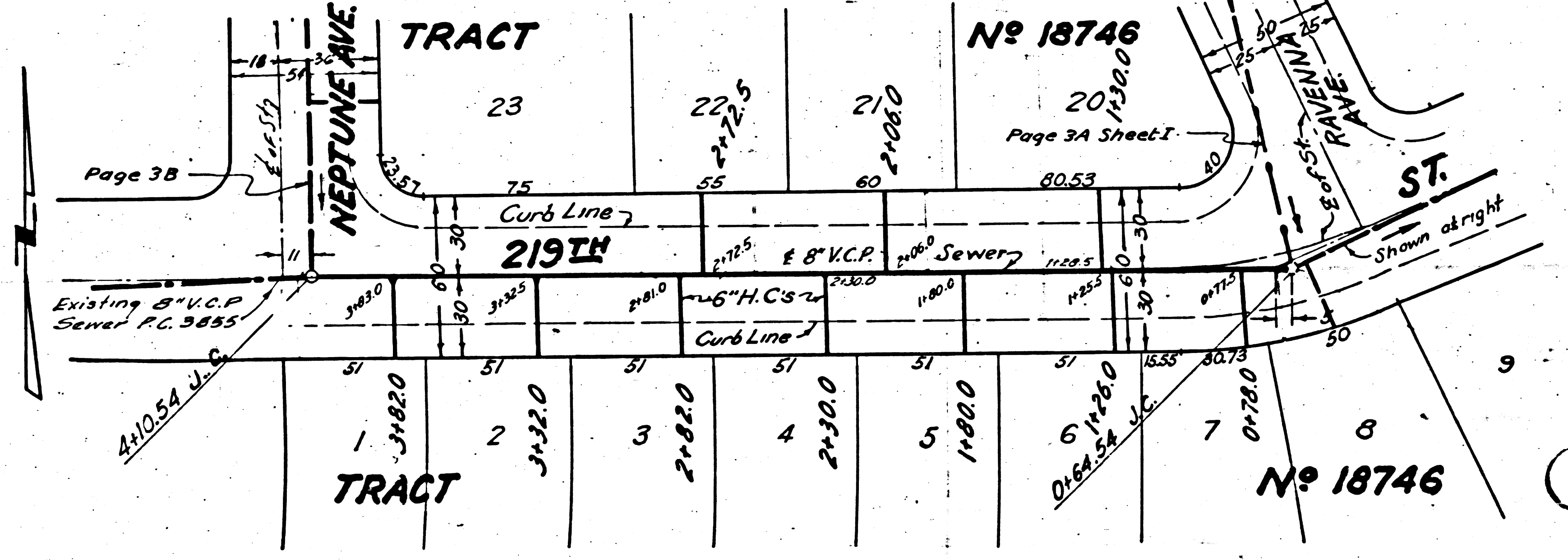
MEDICINE WINE STREET  
 SANEMVA AVE  
 PC 5213 7th E 494  
 16

J.N.F.464  
16,323



P.C. 2579 J.N. F.464  
PAGE 2

16,322



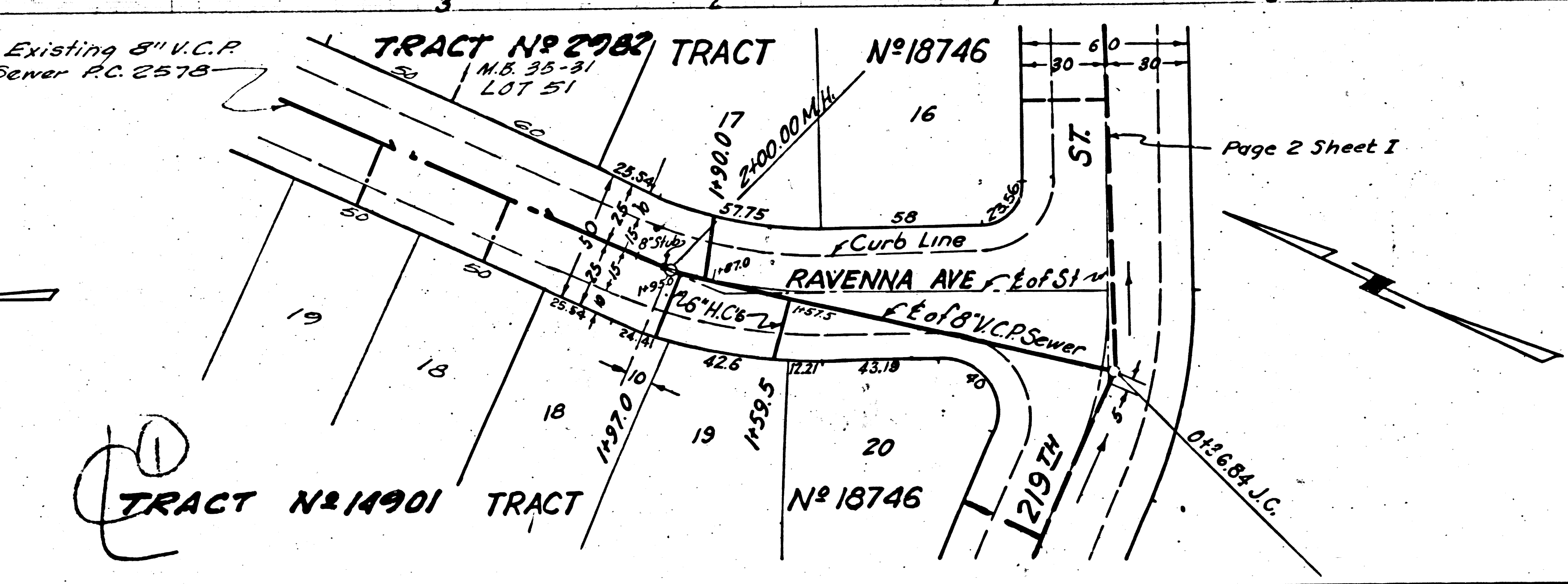
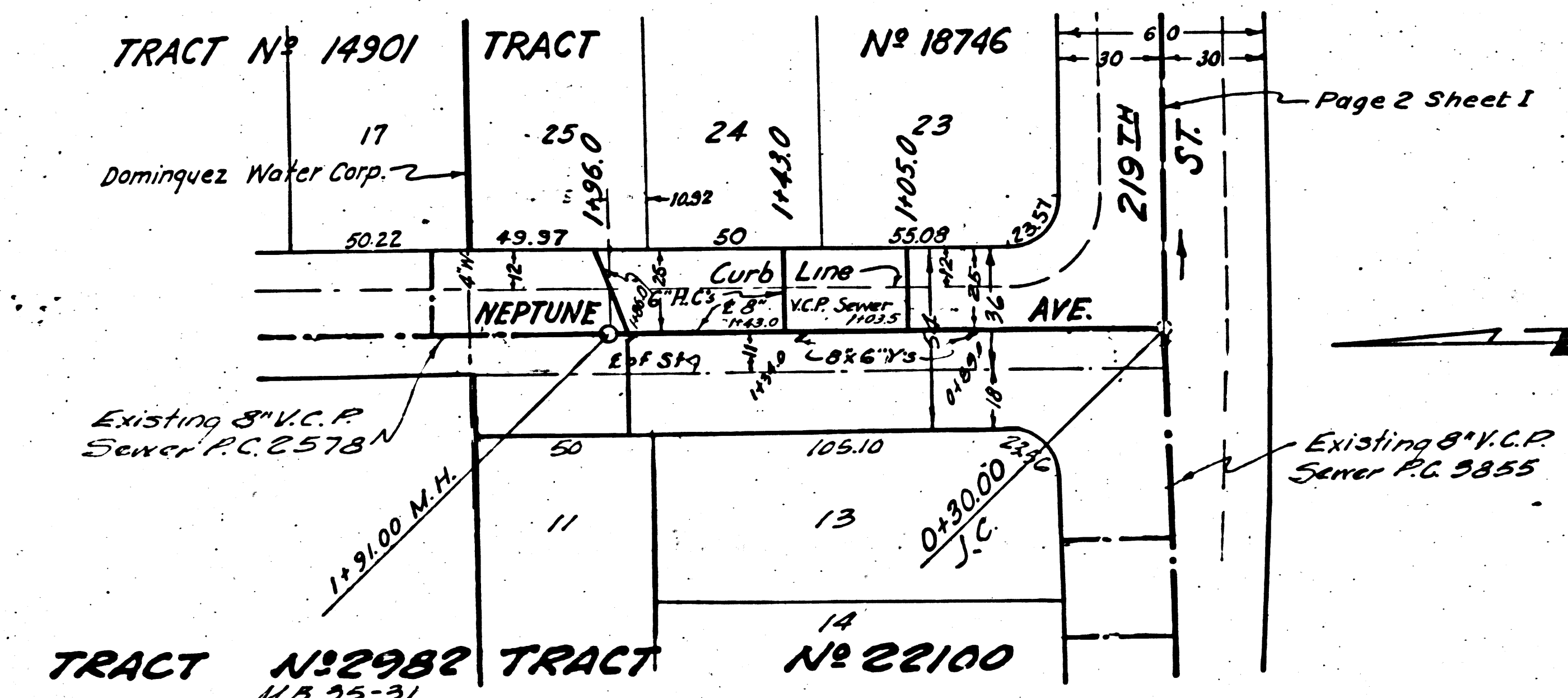
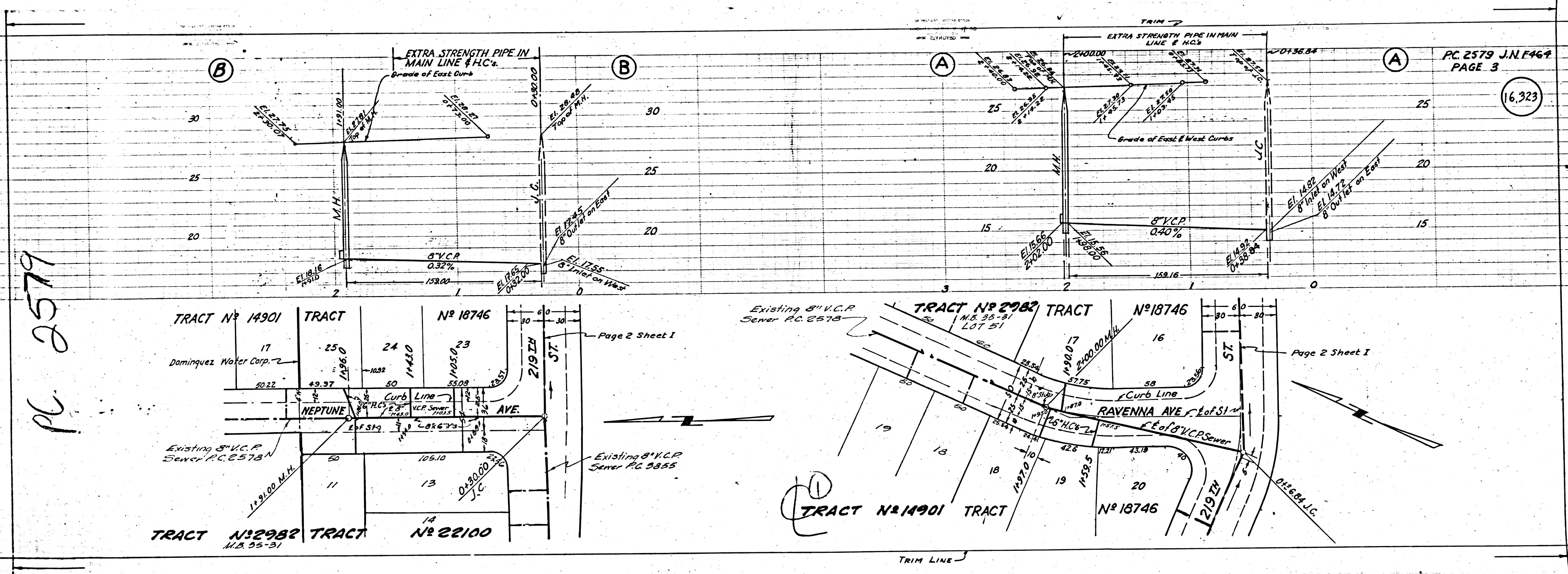
10\"/>

16,322

TRIM LINE

PC 2579 J.N.E.469  
PAGE 3  
16,323

PC 2579



PC 2579 J.N.E.469  
PAGE 3

16,323