

Trim Line

### WHITTIER BLDG. DIST. 11

PROFILE, ALIGNMENT AND GRADE OF  
**SANITARY SEWERS**  
TO BE CONSTRUCTED IN  
**TRACT NO. 18214**

PC 2580  
J.N. F466  
Page 1

**PRIVATE CONTRACT NO. 2580**  
W.S. 34  
**ONE SHEET**

18107

SCALE: VERT. 1" = 4'  
HORIZ. 1" = 40'

JANUARY, 1953

PREPARED IN THE OFFICES OF  
**HARRY GILBERT - CIVIL ENGINEER**  
REG. C. E. NO. 1797

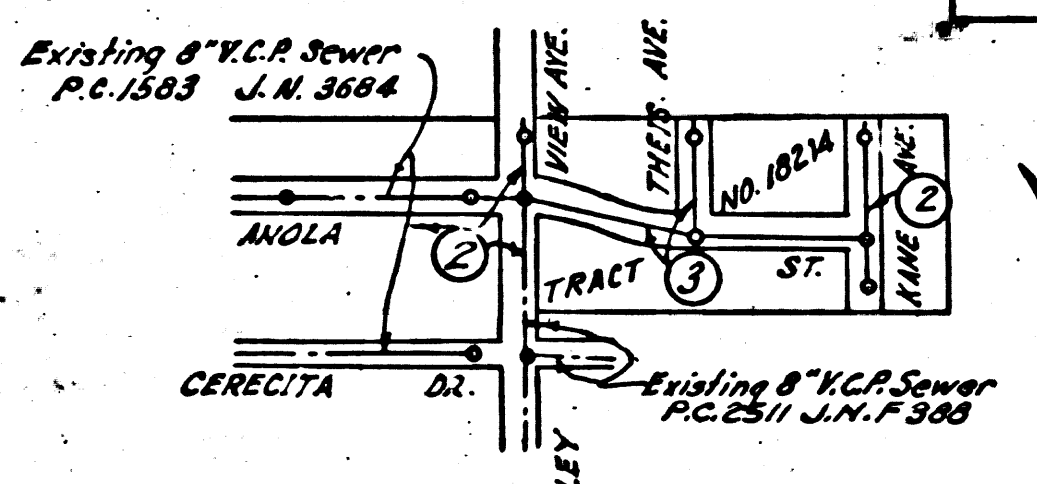
FOR LEGEND SEE PLAN NO. S-O-64

B.M. SY 1296  
13.7' C.M. cont. return 13' W. of E. of Valley  
View 20' N. of E. of Broadway

- NOTE:**
1. NO REPRESENTATIVE OF THE COUNTY ENGINEER WILL SURVEY OR LAY OUT ANY PORTION OF THE WORK.
  2. THE OWNER OR THE AUTHORIZED REPRESENTATIVE SHALL PURSUE THE COUNTY ENGINEER WITH GRADE SHEETS AND STATIONS FOR ALL HOUSE LATERALS AND Y BRANCHES AND SMALL PIONEER STAKES FOR THEM AT THEIR PROPER LOCATIONS WITH STATIONING PLAINLY MARKED. ANY CHANGE IN LOCATION SHALL BE REQUESTED IN WRITING BY THE OWNER OR HIS REPRESENTATIVE.
  3. NO REVISIONS SHALL BE MADE IN THESE PLANS WITHOUT APPROVAL OF THE COUNTY ENGINEER.
  4. USE STANDARD MANHOLE FRAMES AND COVERS, 2'-0" DIA., EXCEPT AS NOTED.
  5. USE STANDARD STRENGTH PIPE.
  6. USE GEMENT MATHS FOR ALL BYRINDS GRAY PIPE JOINTS.
  7. RESURFACE ALL TRENCH WITHIN PAVED AREA TO MEET L.A. COUNTY ROAD DEPT. REQUIREMENTS.
  8. EXCAVE FOUR FEET OF SEWER AT POINTS OF INTERFERENCE WITH POLES, 5'-0" DIA.
  9. HOUSE ENTERANCES TO BE CONSTRUCTED WITH INVERTS AT PROPERTY LINE 6 FEET BELOW CURB GRADE EXCEPT AS NOTED.
  10. ALL STRUCTURES SHALL BE BRICK SEWER STRUCTURES, 3'-0" DIA., EXCEPT AS NOTED.
  11. PROVIDE STAKES ON THE PROPERTY LINES OR PROPERTY LINES PRODUCED BY RIGHT ANGLES TO THE SEWER LINE AT THE CENTER LINE OF EACH MANHOLE.
  12. FOR ALLOWABLE LEAKAGE TEST USE FORMULA NO. 1, SPECIFICATIONS - SEC 57

Sheet No	Pages
1	1-3

NO CHARGE FOR CONNECTIONS  
SIGNED H.L.R. 4-16-53



checked 5-10-53 M. L. Lamm

**NOTES:**

GRADES TO WHICH THIS IMPROVEMENT IS TO BE CONSTRUCTED ARE SHOWN ON PLANS AND PROFILES. GRADE POINTS FOR TOP OF CURB, CENTER LINE OF STREETS, OR CENTER LINE OF ALLEY ARE SHOWN BY CIRCLES ON PROFILES. AT ALL POINTS BETWEEN DESIGNATED POINTS THE GRADE SHALL BE ESTABLISHED SO AS TO CONFORM TO A STRAIGHT LINE DRAWN BETWEEN SAID DESIGNATED POINTS.

ELEVATIONS ARE IN FEET ABOVE U.S.C. DATUM OR MEAN SEA LEVEL.

THIS DRAWING AND THE DATA HEREON ARE HEREBY MADE A PART OF THE SPECIFICATIONS.

WORK SHALL BE CONSTRUCTED ACCORDING TO SPECIFICATIONS ON FILE IN THE OFFICE OF THE COUNTY ENGINEER AND SHALL BE INSPECTED ONLY IN THE PRESENCE OF THE COUNTY ENGINEER.

BEFORE WORK CAN BE STARTED, THE CONTRACTOR MUST OBTAIN A PERMIT TO EXCAVATE IN COUNTY STREETS FROM THE L.A. COUNTY ROAD DEPT., 100 N. 2ND ST. AND MAKE A DEPOSIT WITH THE COUNTY ENGINEER, 755 L.A. COUNTY ENGINEER BLDG., SUFFICIENT TO COVER THE COST OF CONSTRUCTION INSPECTION AND RECORDING.

APPROVAL OF THIS PLAN BY THE COUNTY OF LOS ANGELES DOES NOT CONSTITUTE A REPRESENTATION AS TO THE ACCURACY OF THE LOCATION OR AS TO THE EXISTENCE OR NON-EXISTENCE OF ANY UNDERGROUND UTILITY, PIPE OR STRUCTURE WITHIN THE LIMITS OF THIS PROJECT.

COUNTY OF LOS ANGELES, CALIFORNIA.

APPROVED - WILLIAM J. FOX, COUNTY ENGINEER      APPROVED - A.M. RAWN  
CHIEF ENGINEER CO. SAN. DIST. NO. 18      CHIEF ENGINEER

BY: *W. J. Fox*      BY: *A. M. Rawn*  
CHIEF DEPUTY      OFFICE ENGINEER

CHECKED BY: *Richard E. Kubler* 4-7-53  
OFFICE OF THE COUNTY ENGINEER, REG. C. E. NO. 7860

RECEIVED  
 APR 16 1953  
 COUNTY ENGINEER  
 SAN. DIST. NO. 18  
 P.C. 2580  
 J.N. F466  
 PAGE 1

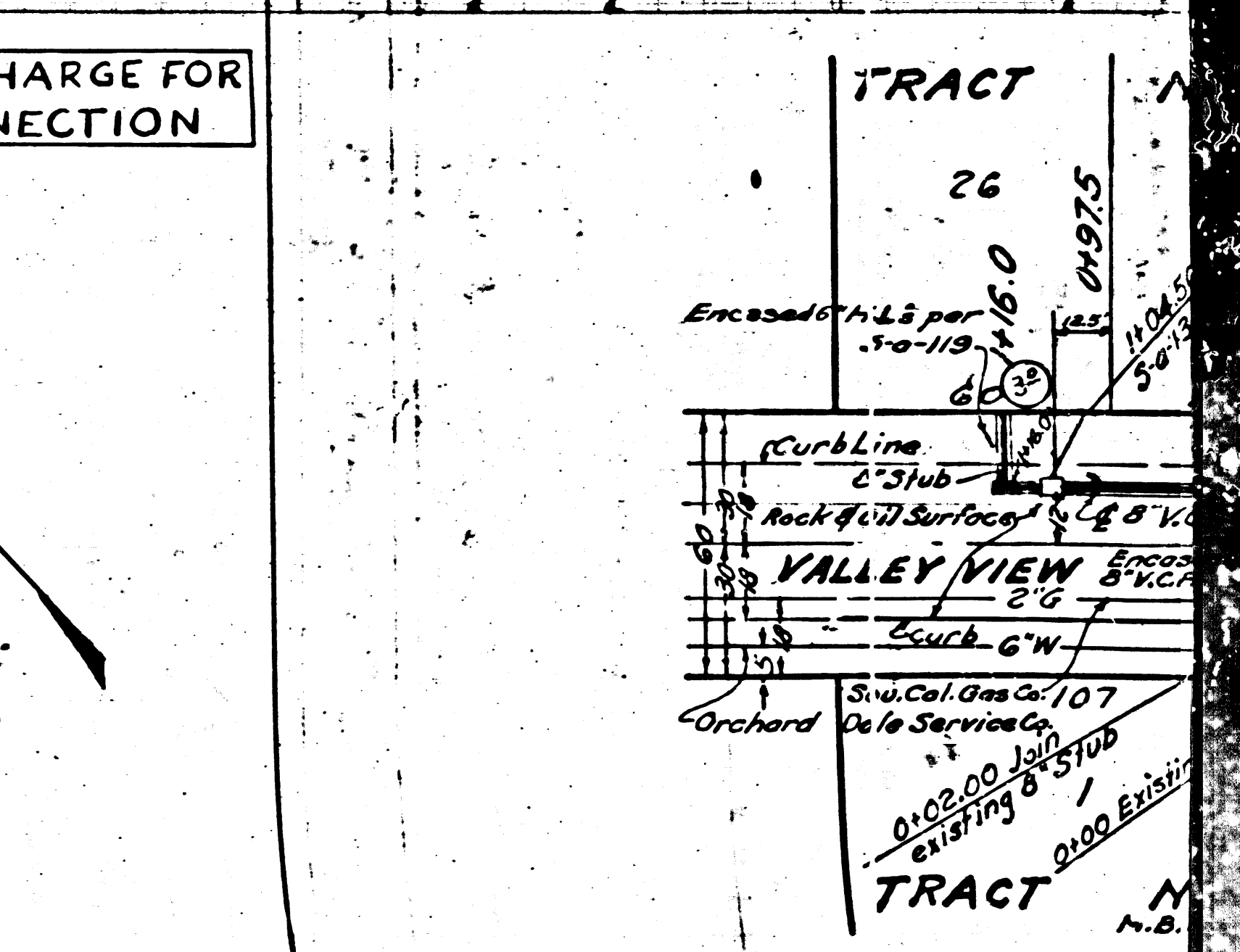
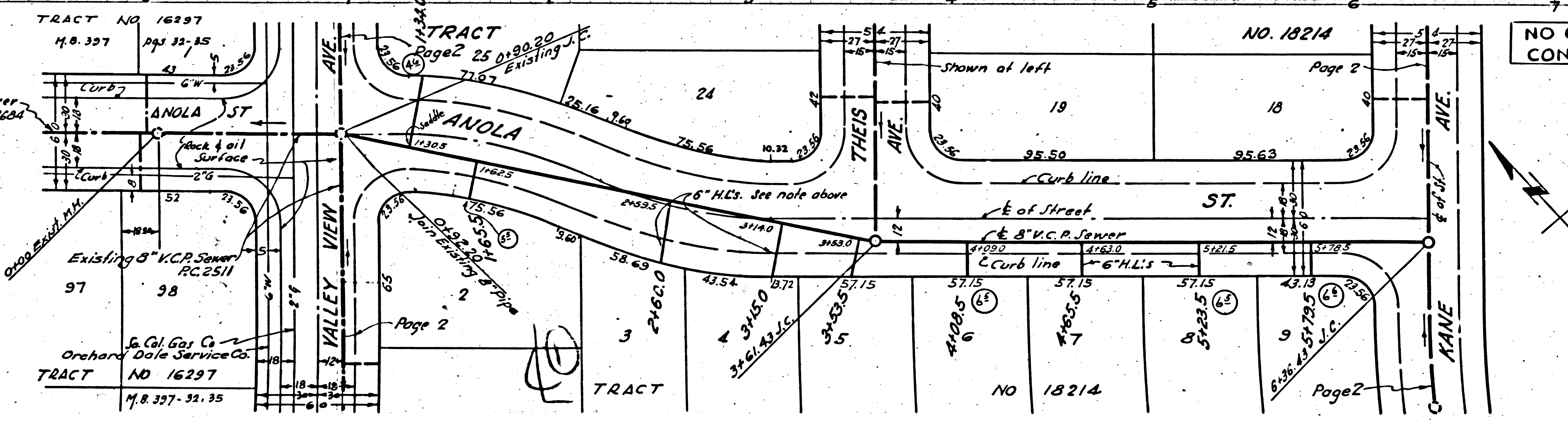
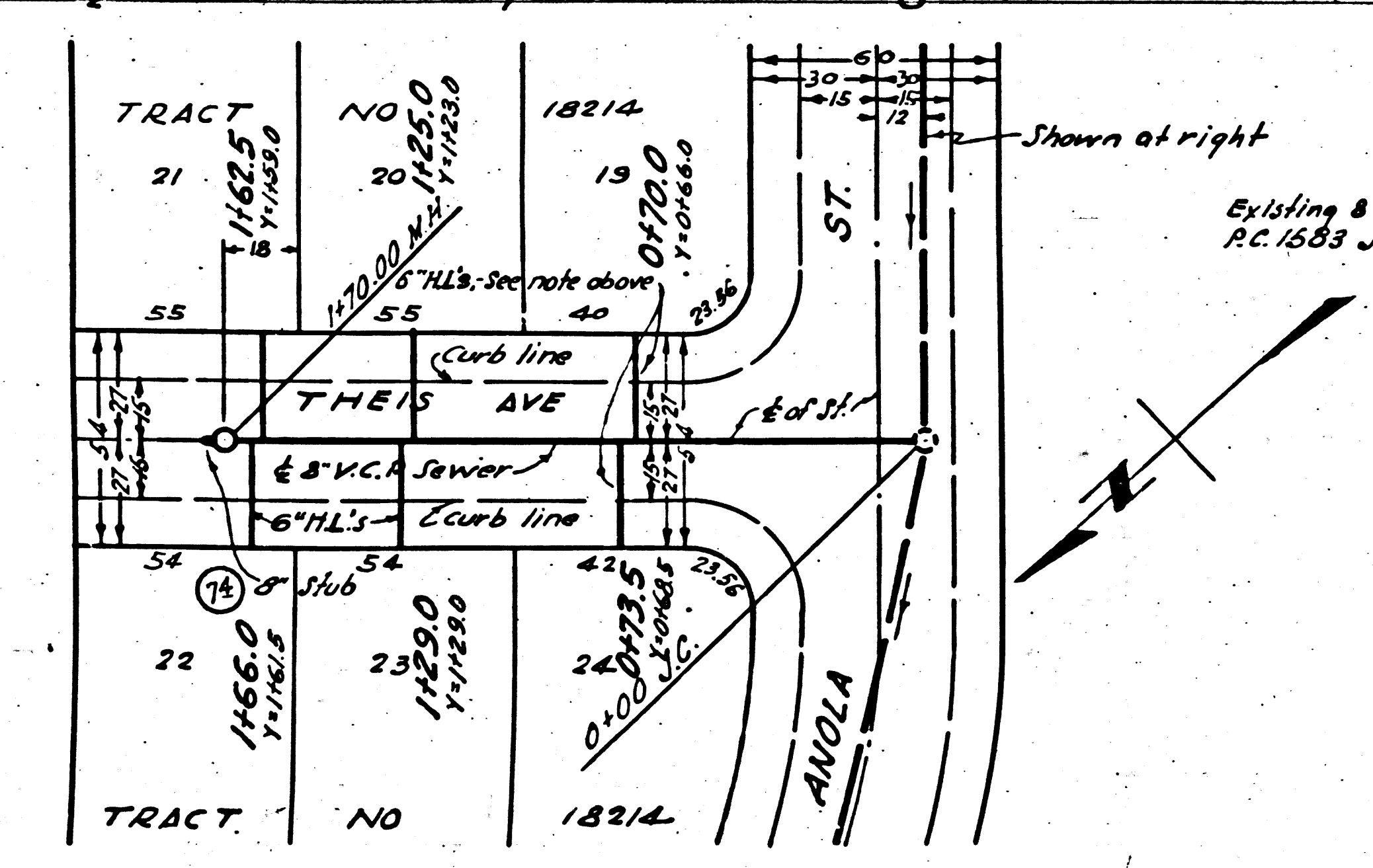
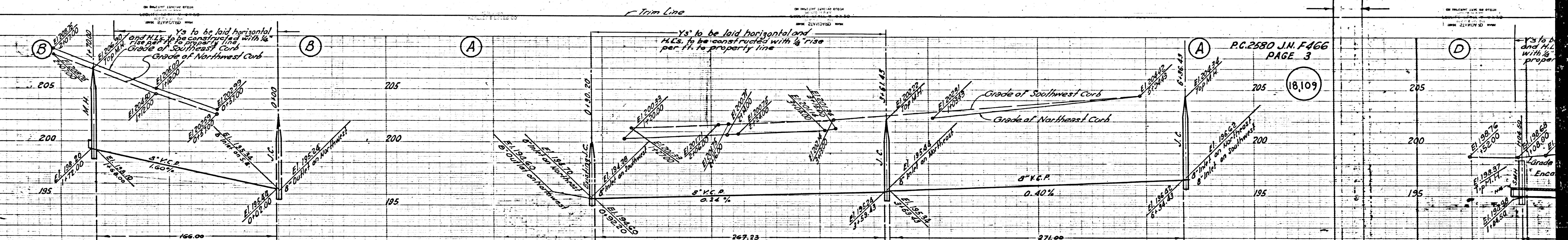
Trim Line







ANOLA ST. 12' WIDE  
KANE AVE. 12' WIDE  
C.C. 5880 7/1/55



NO CHARGE FOR CONNECTION

P.C. 2580 J.N. F466  
PAGE 3

18,109

Trim Line

Trim Line