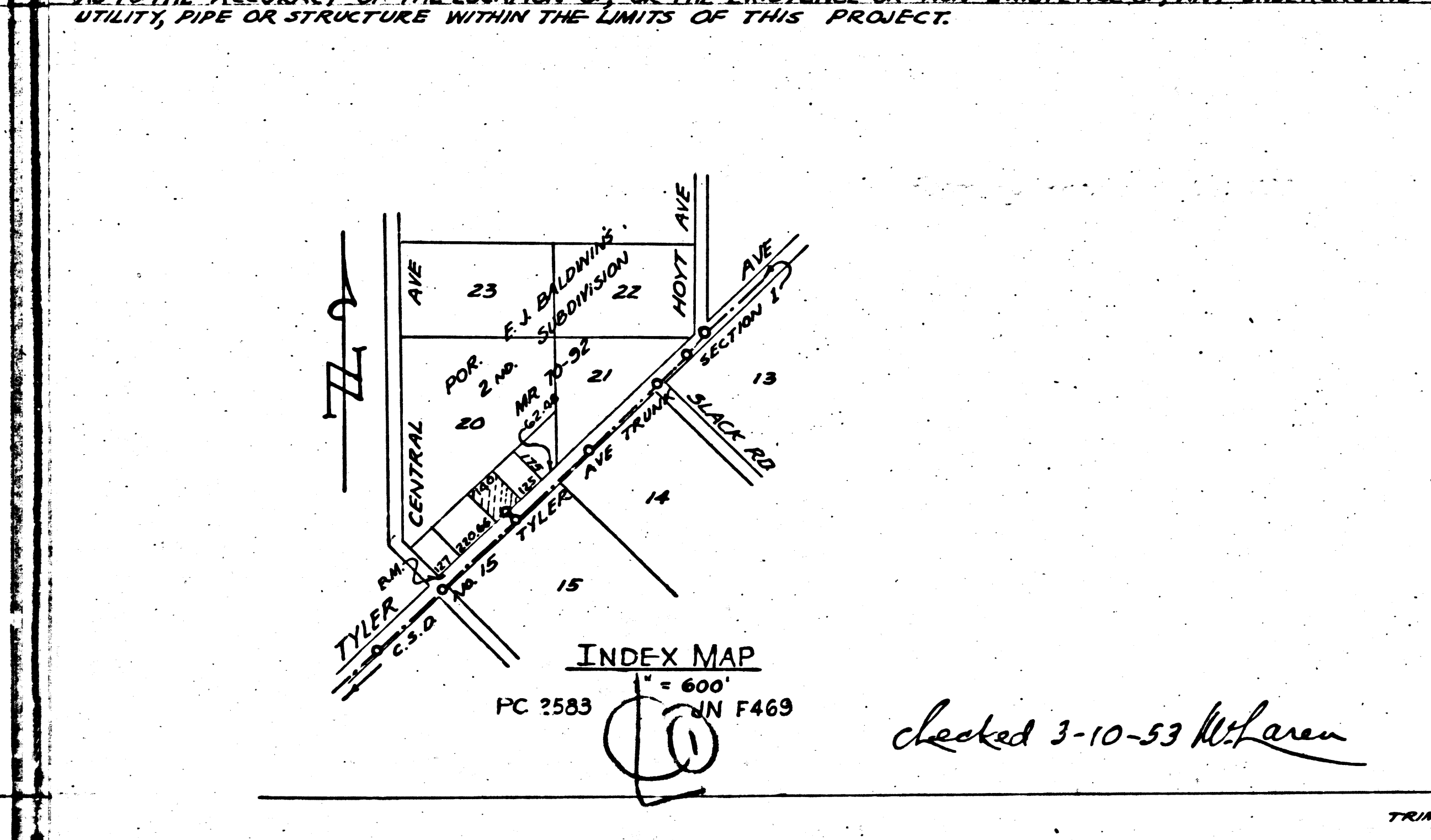


PUNENTE

CONSTRUCTION NOTES

- (1) USE STANDARD MANHOLE FRAME & COVER, S-8-117.
- (2) USE STANDARD STRENGTH PIPE.
- (3) USE CEMENT MORTAR FOR ALL VITRIFIED CLAY PIPE JOINTS.
- (4) RESURFACE ALL TRENCH WITHIN PAVED AREA TO MEET LOS ANGELES CO. ROAD DEPT. SPECIFICATIONS IN ACCORDANCE WITH PERMIT.
- (5) ALL STRUCTURES SHALL BE BRICK STRUCTURES S-8-104.
- (6) ALL HOUSE CONNECTION SEWERS SHALL HAVE MINIMUM RISE OF 1/4 INCH PER FOOT.
- (7) FOR ALLOWABLE LEAKAGE TEST, USE FORMULA NAT. SPEC. SEC. 51.

NOTE:
 NO REPRESENTATIVE OF THE COUNTY ENGINEER WILL SURVEY OR LAY OUT ANY PORTION OF THE WORK. THE OWNER OR HIS AUTHORIZED REPRESENTATIVE SHALL FURNISH THE COUNTY ENGINEER WITH GRADE SHEETS & STATIONS OF ALL HOUSE CONNECTIONS AND Y BRANCHES AND SHALL PROVIDE STAKES FOR THEM AT THEIR PROPER LOCATIONS WITH STATIONING PLAINLY MARKED. ANY CHANGE OF LOCATION SHALL BE REQUESTED IN WRITING BY THE OWNER OR HIS REPRESENTATIVE.
 NO REVISIONS SHALL BE MADE IN THESE PLANS WITHOUT APPROVAL OF THE COUNTY ENGINEER. THE OWNER SHALL PROVIDE STAKES ON THE PROPERTY LINE OR PROPERTY LINES PRODUCED AT RIGHT ANGLES TO THE SEWER LINE AT THE E OF EACH MANHOLE.
 APPROVAL OF THIS PLAN BY THE COUNTY OF LOS ANGELES DOES NOT CONSTITUTE A REPRESENTATION AS TO THE ACCURACY OF THE LOCATION OR THE EXISTENCE OR NON-EXISTENCE OF ANY UNDERGROUND UTILITY, PIPE OR STRUCTURE WITHIN THE LIMITS OF THIS PROJECT.



P.C. 2583-J.N. F469

**PROFILE, ALIGNMENT AND GRADE OF
 SANITARY SEWER
 TO BE CONSTRUCTED IN
 TYLER AVENUE**

440 FT. NORTHEAST OF CENTRAL AVE.

(FORMERLY KNOWN AS P.C. 1700)
PRIVATE CONTRACT NO. 2583
 W.S. 37

FEBRUARY 1953

PREPARED IN THE OFFICES OF
LUDWIG BROTHERS - CIVIL ENGINEERS
 BY: *Schmitt Ludwig*
 REG. C.E. NO. 7433

FOR LEGEND
 SEE PLAN NO. S-8-84

NOTE:
 GRADES TO WHICH THIS IMPROVEMENT IS TO BE CONSTRUCTED ARE SHOWN ON PLANS AND PROFILE. GRADE POINTS FOR TOP OF CURB, CENTER LINE OF STREET OR CENTER LINE OF ALLEY ARE SHOWN BY CIRCLES ON PROFILE. AT ALL POINTS BETWEEN DESIGNATED POINTS THE GRADE SHALL BE ESTABLISHED SO AS TO CONFORM TO A STRAIGHT LINE DRAWN BETWEEN SAID DESIGNATED POINTS. ELEVATIONS ARE IN FEET ABOVE U.S.C.S. DATUM OR MEAN SEA LEVEL. THIS DRAWING AND THE DATA HEREON ARE HEREBY MADE A PART OF THE SPECIFICATIONS. WORK SHALL BE CONSTRUCTED ACCORDING TO SPECIFICATIONS ON FILE IN THE OFFICE OF THE COUNTY ENGINEER AND SHALL BE PROSECUTED ONLY IN THE PRESENCE OF THE COUNTY ENGINEER. BEFORE WORK CAN BE STARTED THE CONTRACTOR MUST OBTAIN A PERMIT TO EXCAVATE IN COUNTY STREETS FROM THE L.A. COUNTY ROAD DEPT. AND MAKE A DEPOSIT WITH THE COUNTY ENGINEER, 102 W. SECOND STREET, SUFFICIENT TO COVER THE COST OF CONSTRUCTION INSPECTION AND RECORD PLANS.

COUNTY OF LOS ANGELES, CALIFORNIA

APPROVED: *A.M. Rawlin*
 COUNTY ENGINEER
 A.M. RAWLIN

APPROVED: *Schmitt Ludwig* ASST. OFFICE ENGINEER
 CHIEF ENGINEER OF COUNTY
 SANITATION DISTRICT NO. 18

CHECKED BY: *Ed. Dralley* 1-21-1951
 OFFICE OF COUNTY ENGINEER, 846 C.E. NO. 1272

RECEIVED
 FEB 24 1953
 L.A. COUNTY
 SANITATION DISTRICT NO. 18

PC 2583 J.N. F469