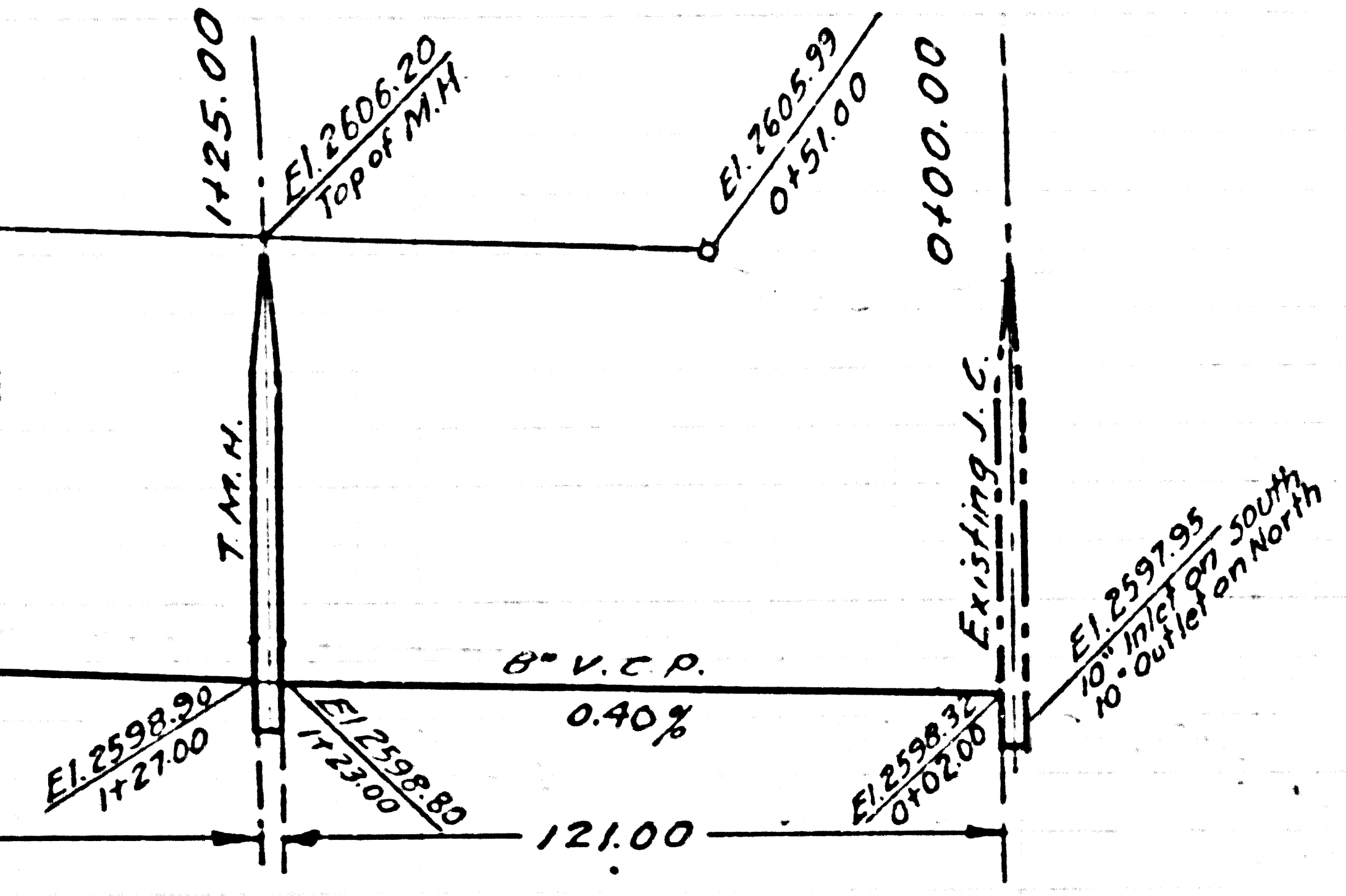


SHT 1 of 2

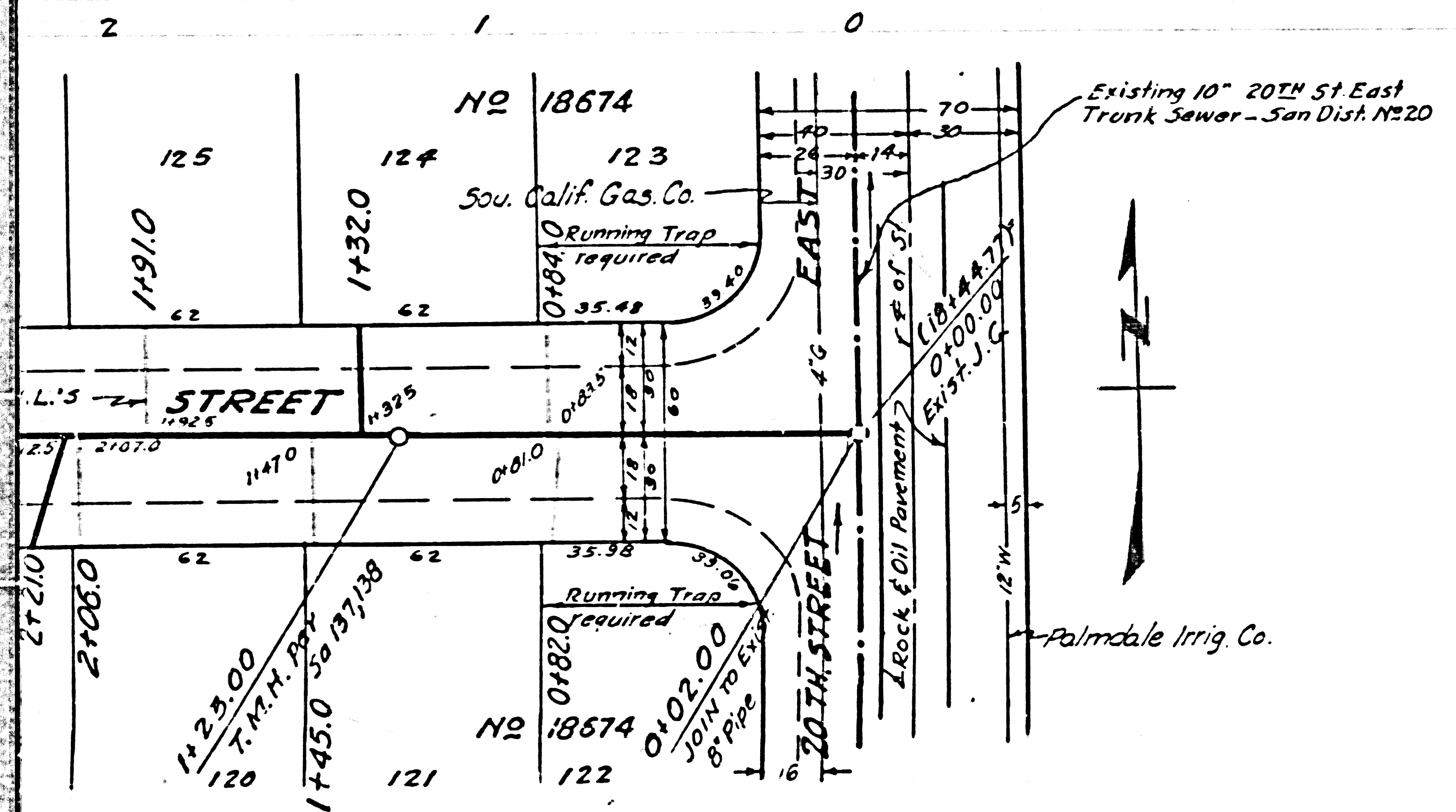
P.C. 2587 J.N. F477
PAGE 2

16,950

BENCH MARK: B.M. 18-8 AVE. Q-B AND 16TH ST. EAST, STD. CO. SUR. MON. MARKED "B.M. 18-8 1952 R.E. 63" SET IN CONC. 1 INCH LOWER THAN THE CURB AND 1' BACK OF CURB, 46' SO. OF \pm OF AVE. Q-B AND 28' 5" E. OF \pm OF 16TH ST. EAST, IN THE W. END OF THE PARKWAY BETWEEN THE MAIN HIGHWAY AND THE SERVICE ST. C.S.F.B. 1322-13 EL. 2621.388



2605
2600
2595



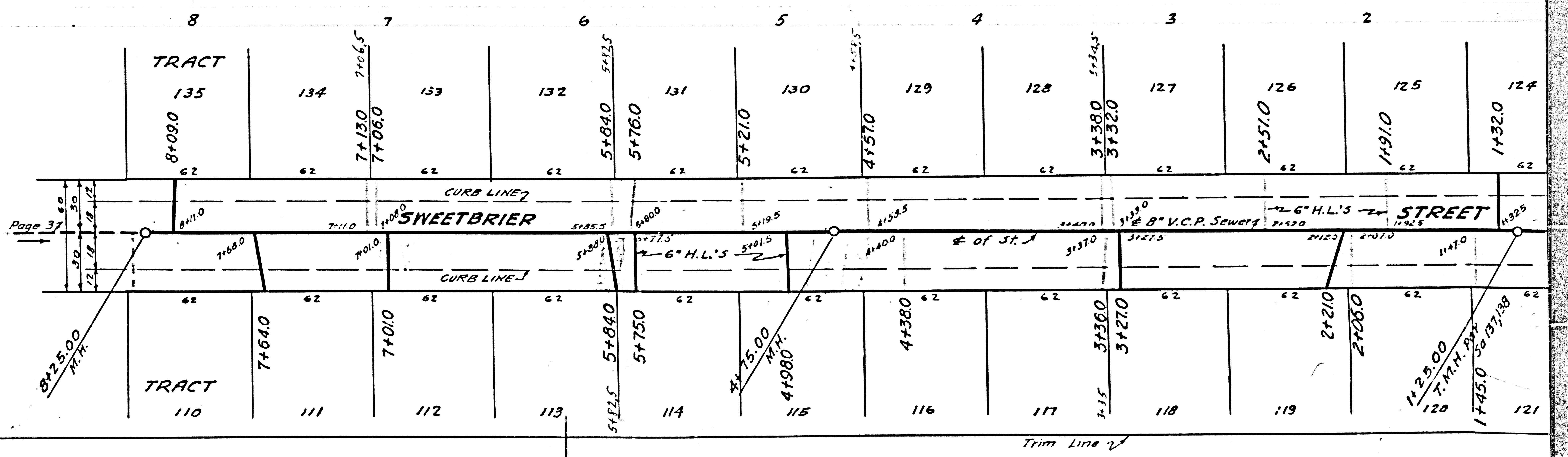
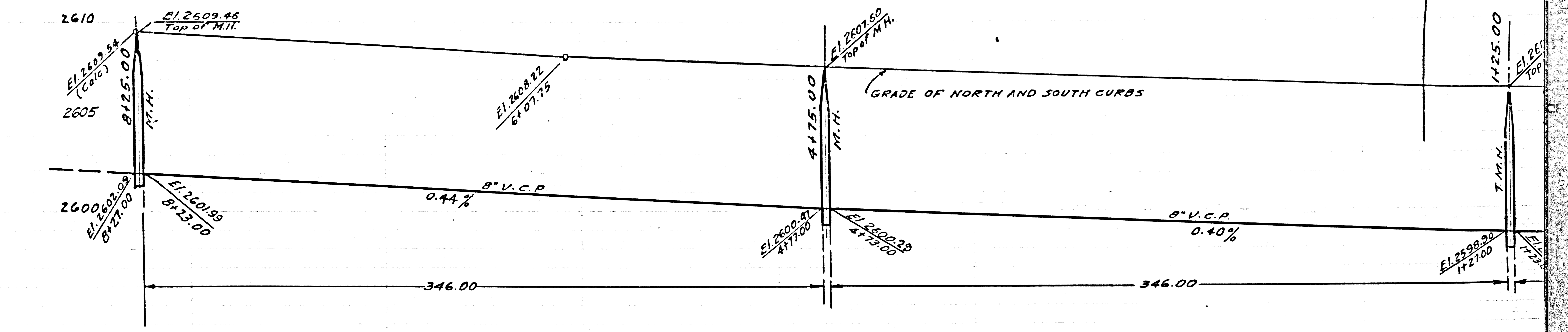
SHEET NO.	PAGES
1	1-4
2	5-7

checked 8-13-53 McFaren

477

P.C. 2587 SHT 1 of 2 Page 3

Trim Line 1



Page 37

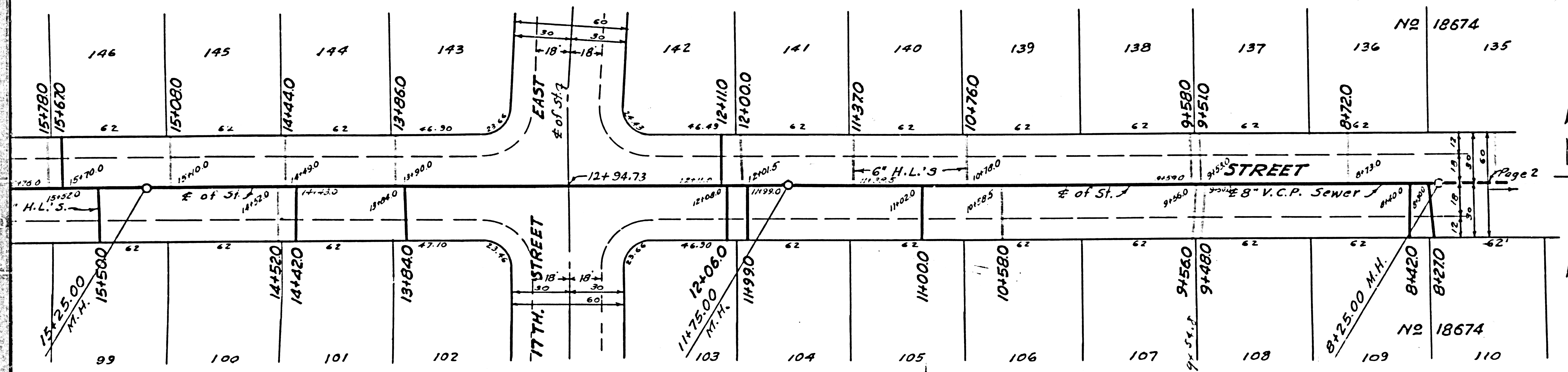
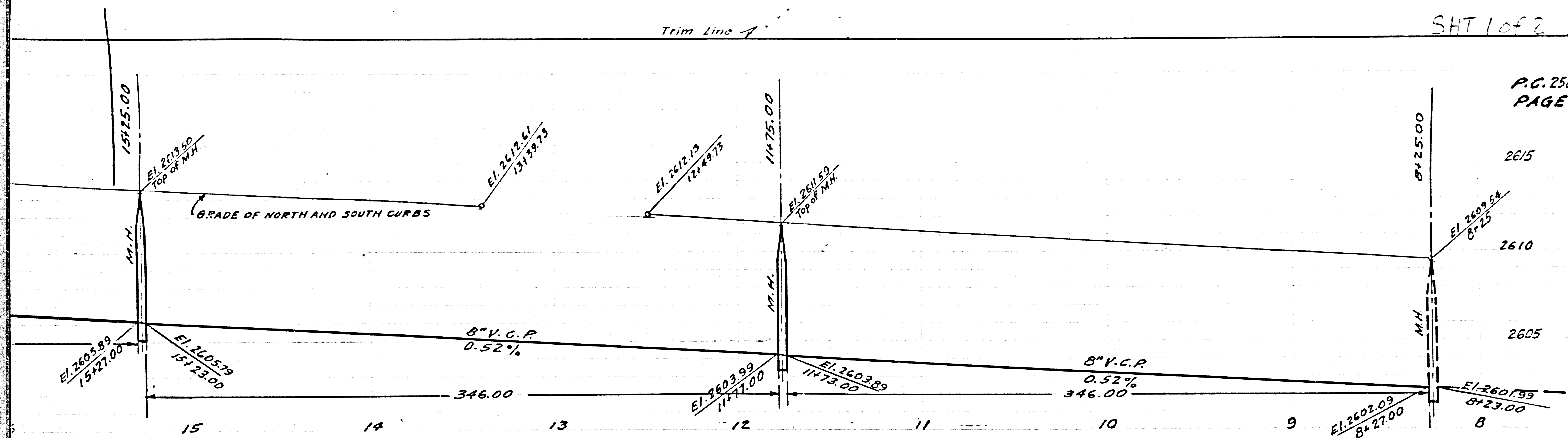
Trim Line 2

Trim Line 1

SHT 1 of 2 P3 4

P.C. 2587 J.N.F.477
PAGE

16,951



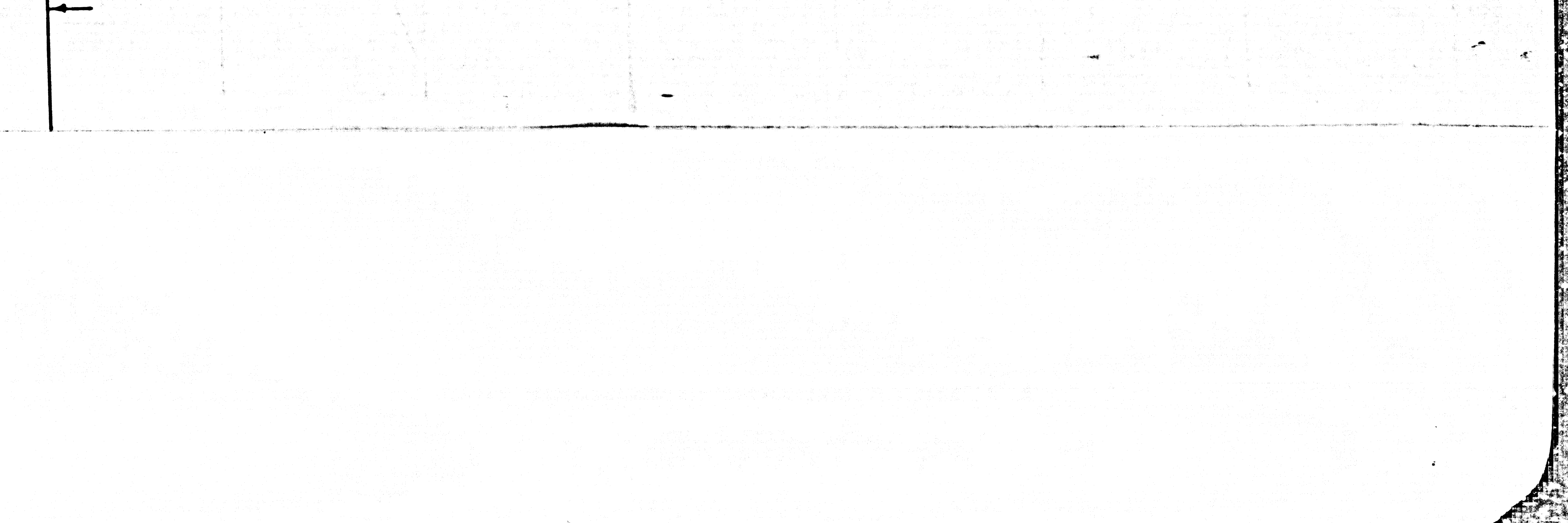
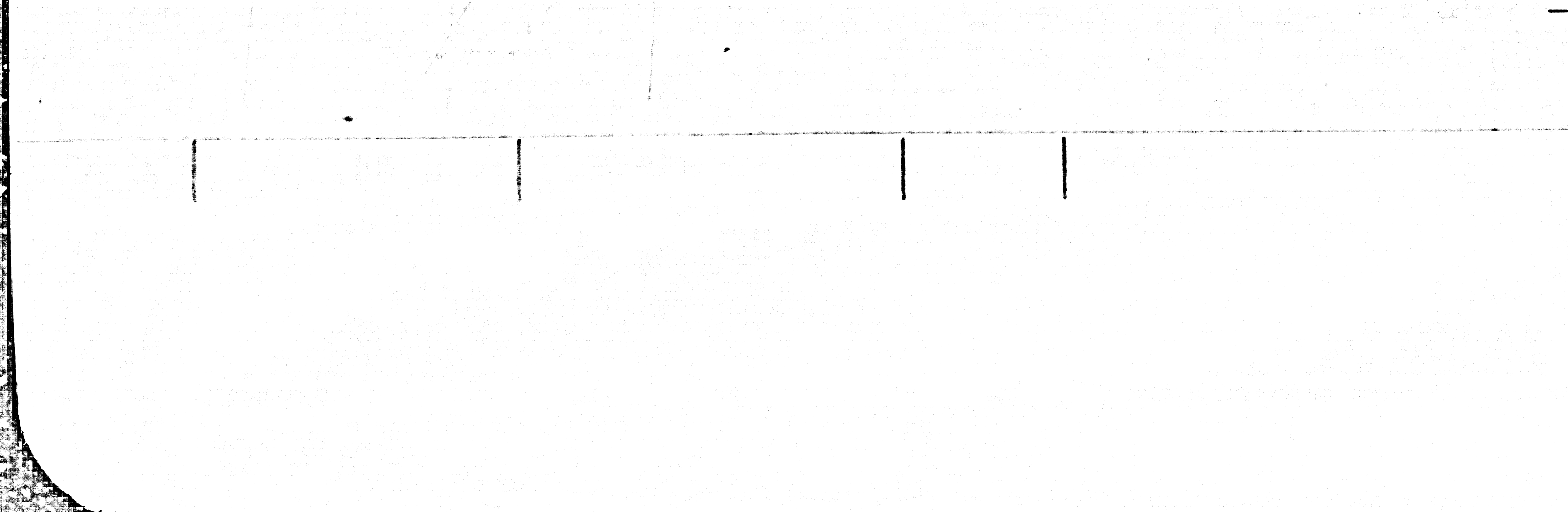
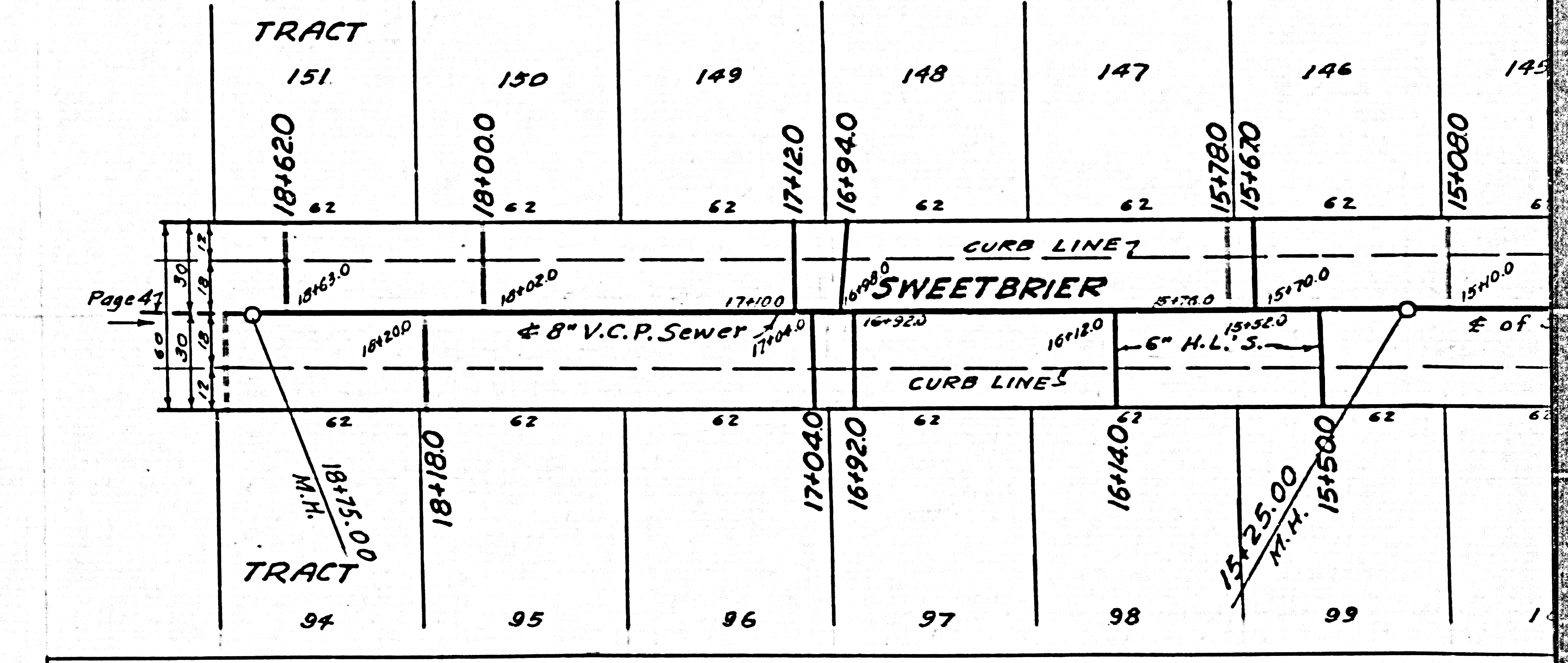
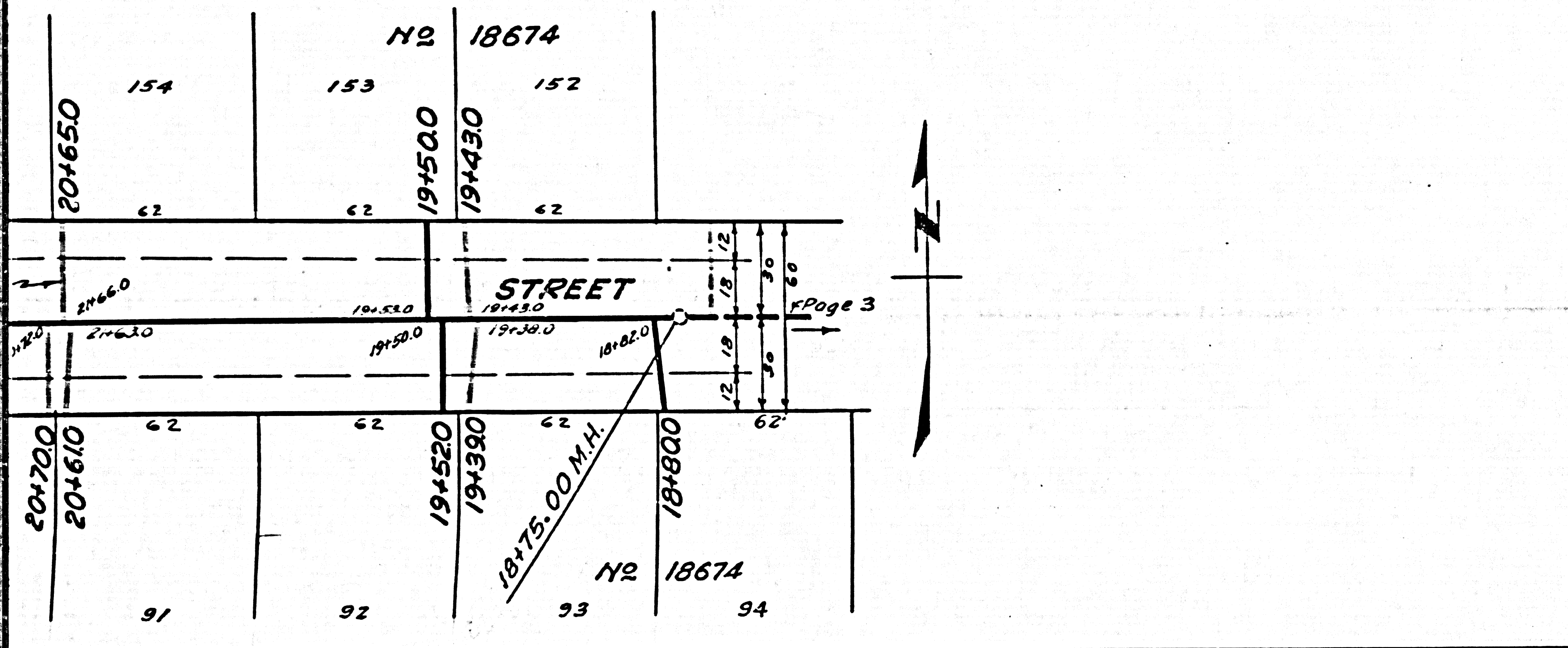
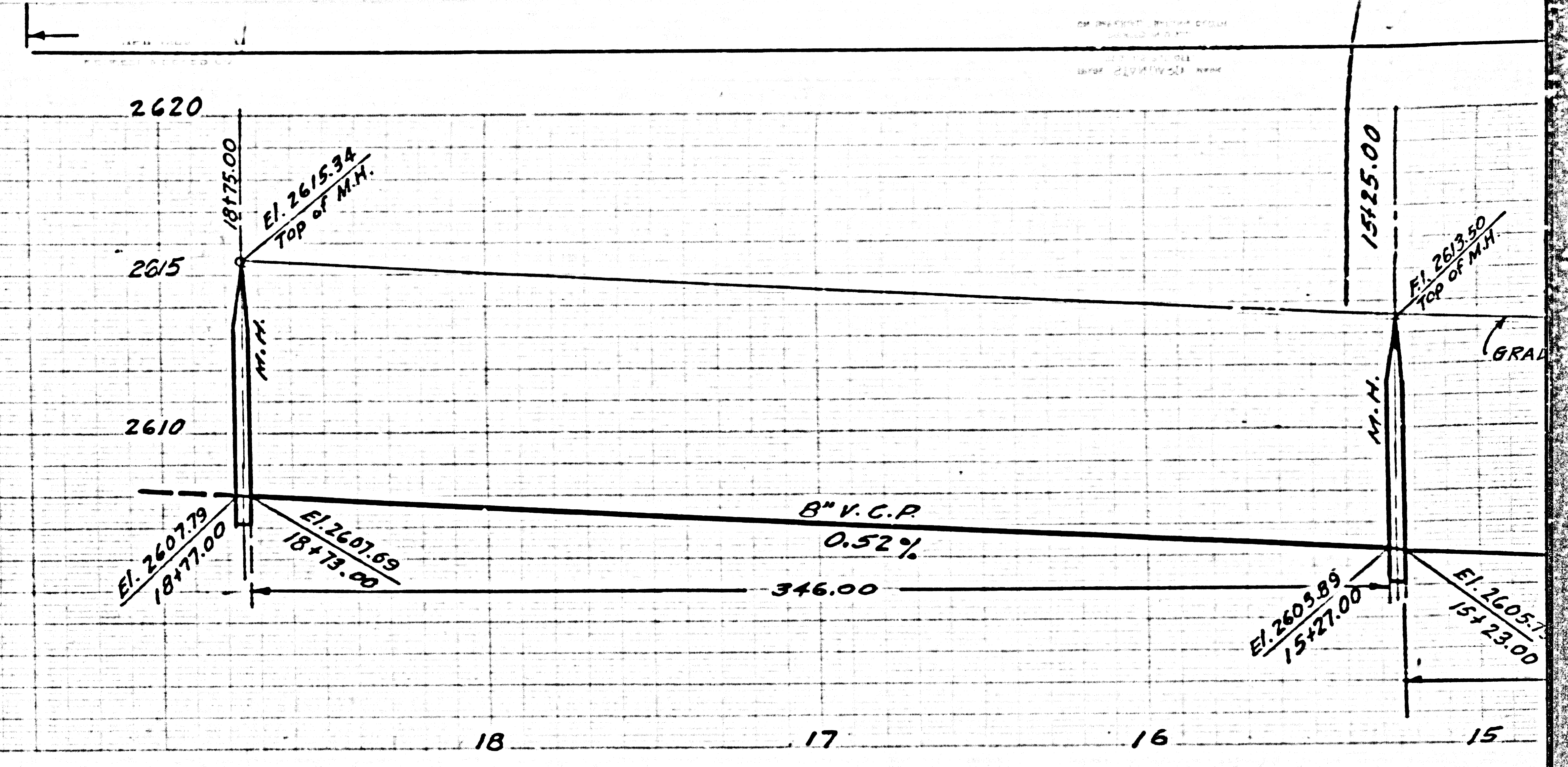
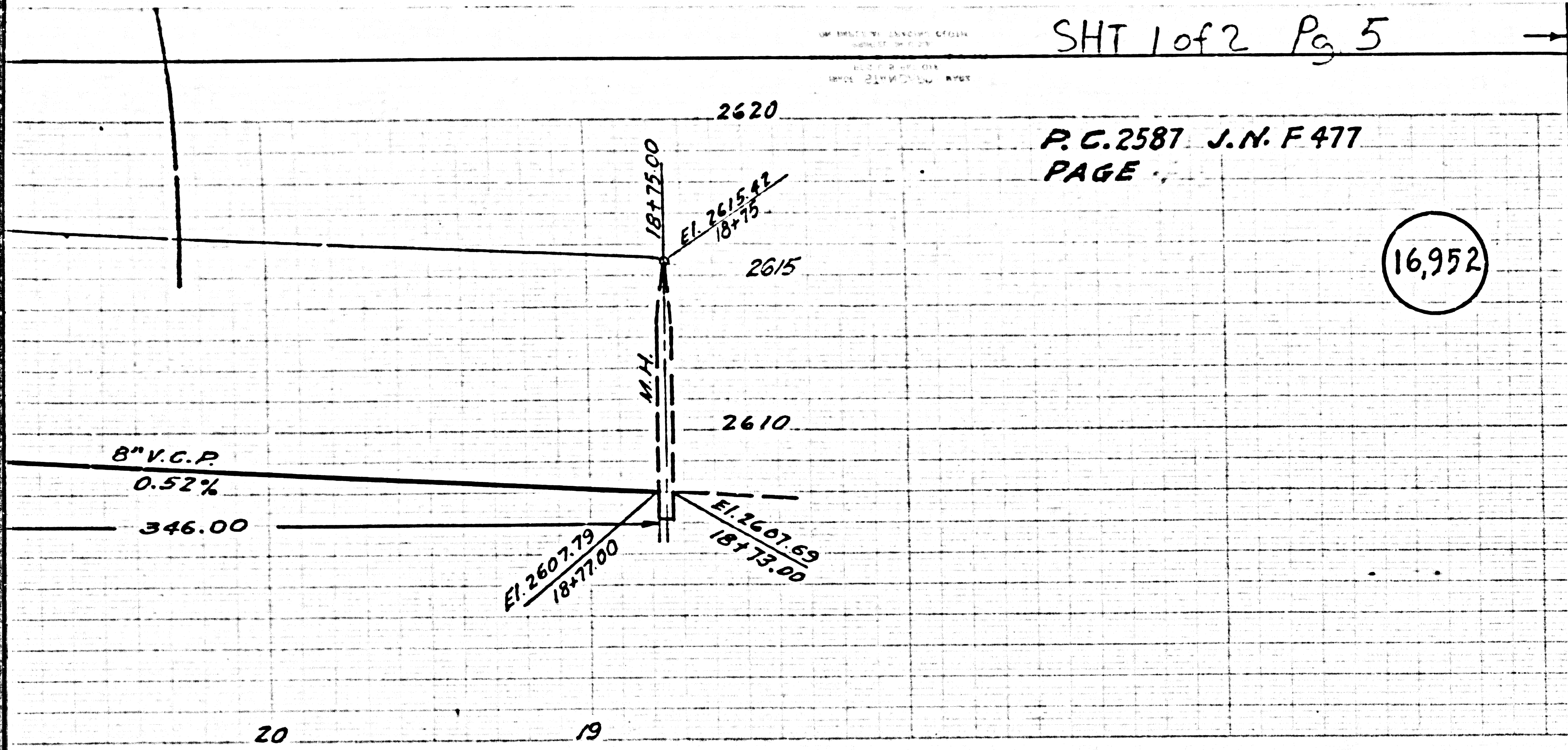
Trim Line 2

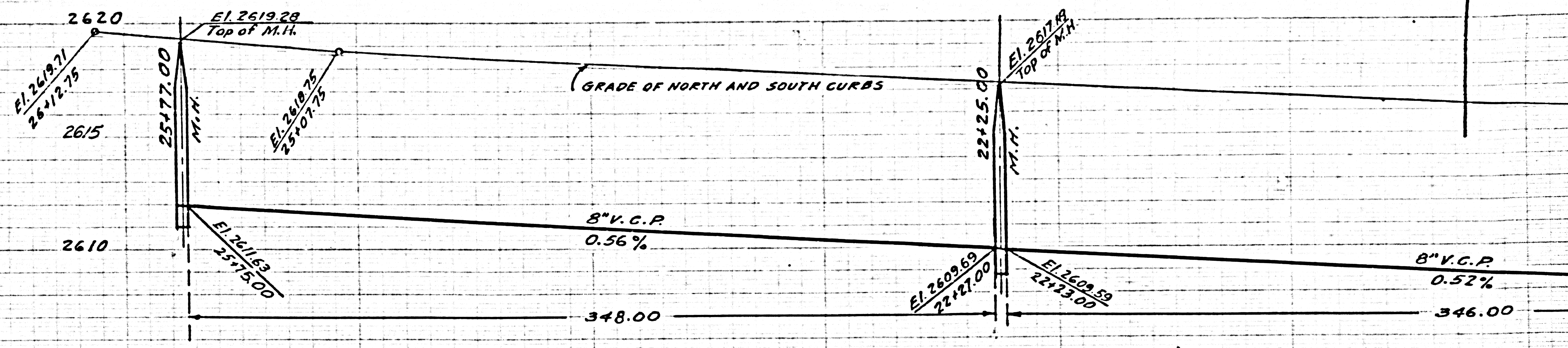
Page 2

SHT 1 of 2 Pg 5

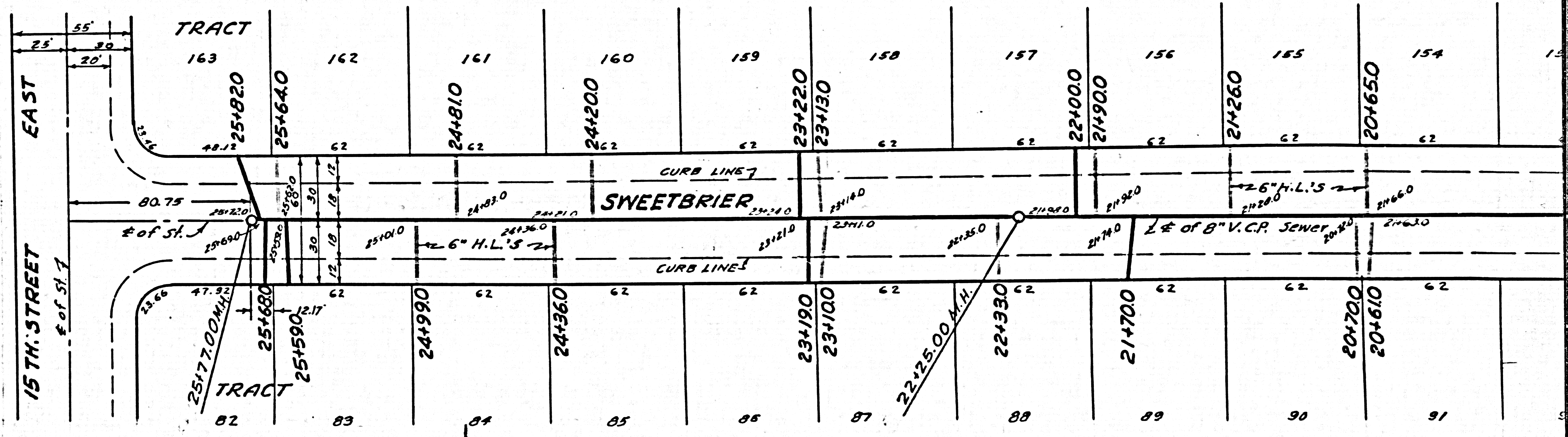
P.C. 2587 J.N.F. 477
PAGE

16,952



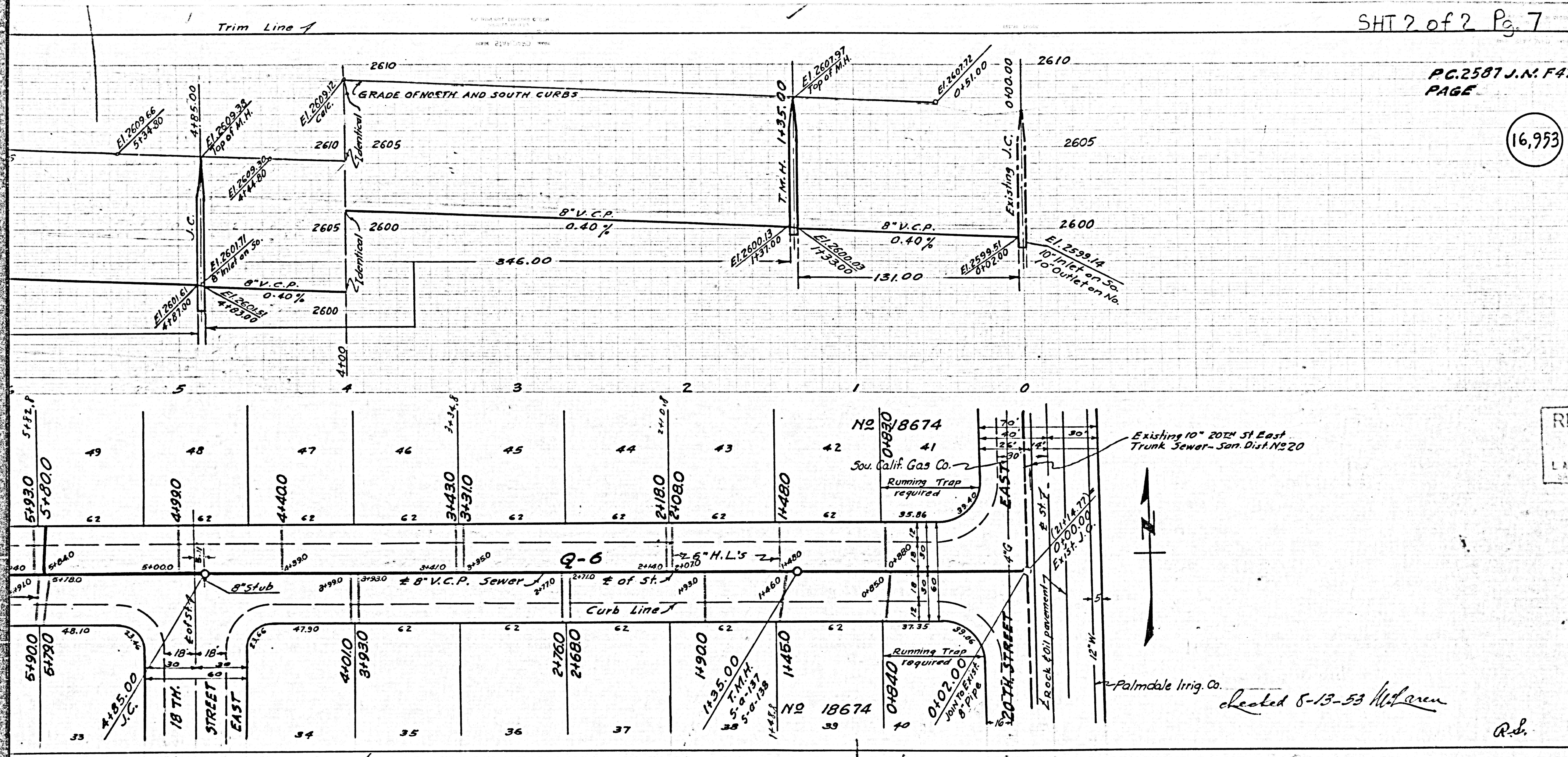


26 25 24 23 22 21 20



PG. 2587 J.N. F477
PAGE

16,953



RECEIVED
APR
L A COUNTY
SANITARIO

Existing 10" 20TH St East
Trunk Sewer - San. Dist. N920

Palmdale Irrig. Co.

checked 8-13-53 W.L. Allen

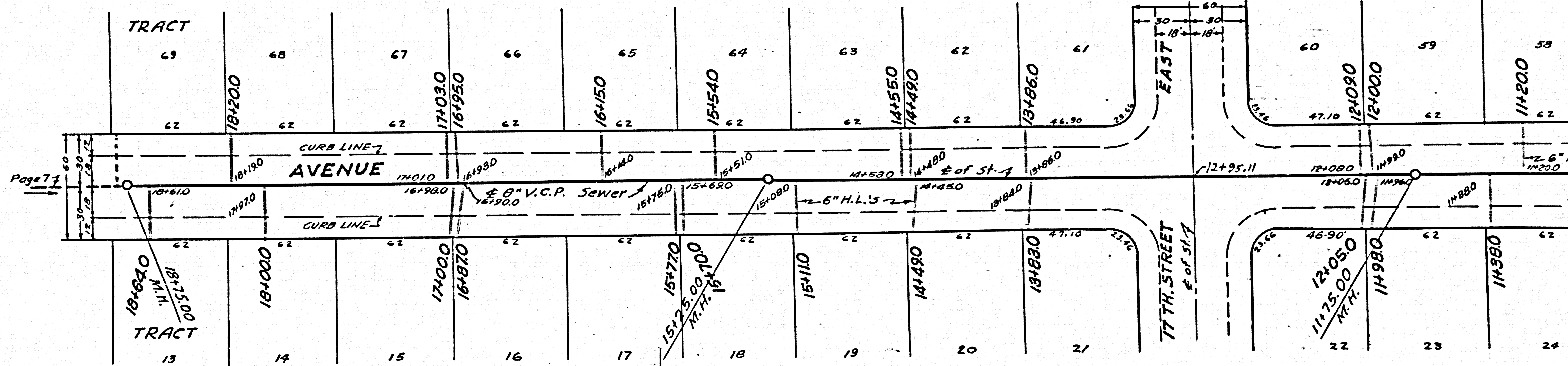
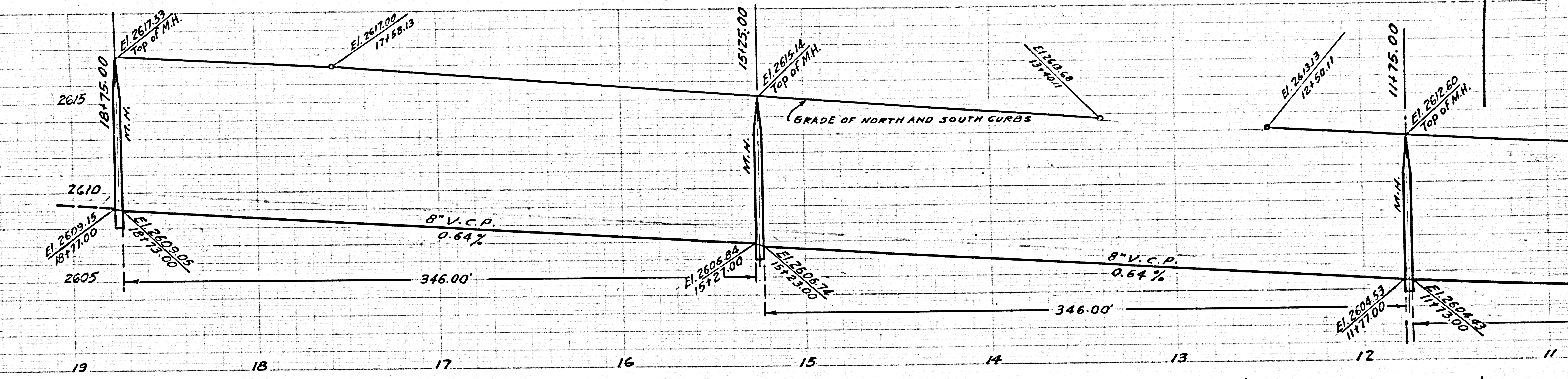
R.S.

P.C. 2587 - SHT 2 of 2 Pg. 9

Trim Line

477

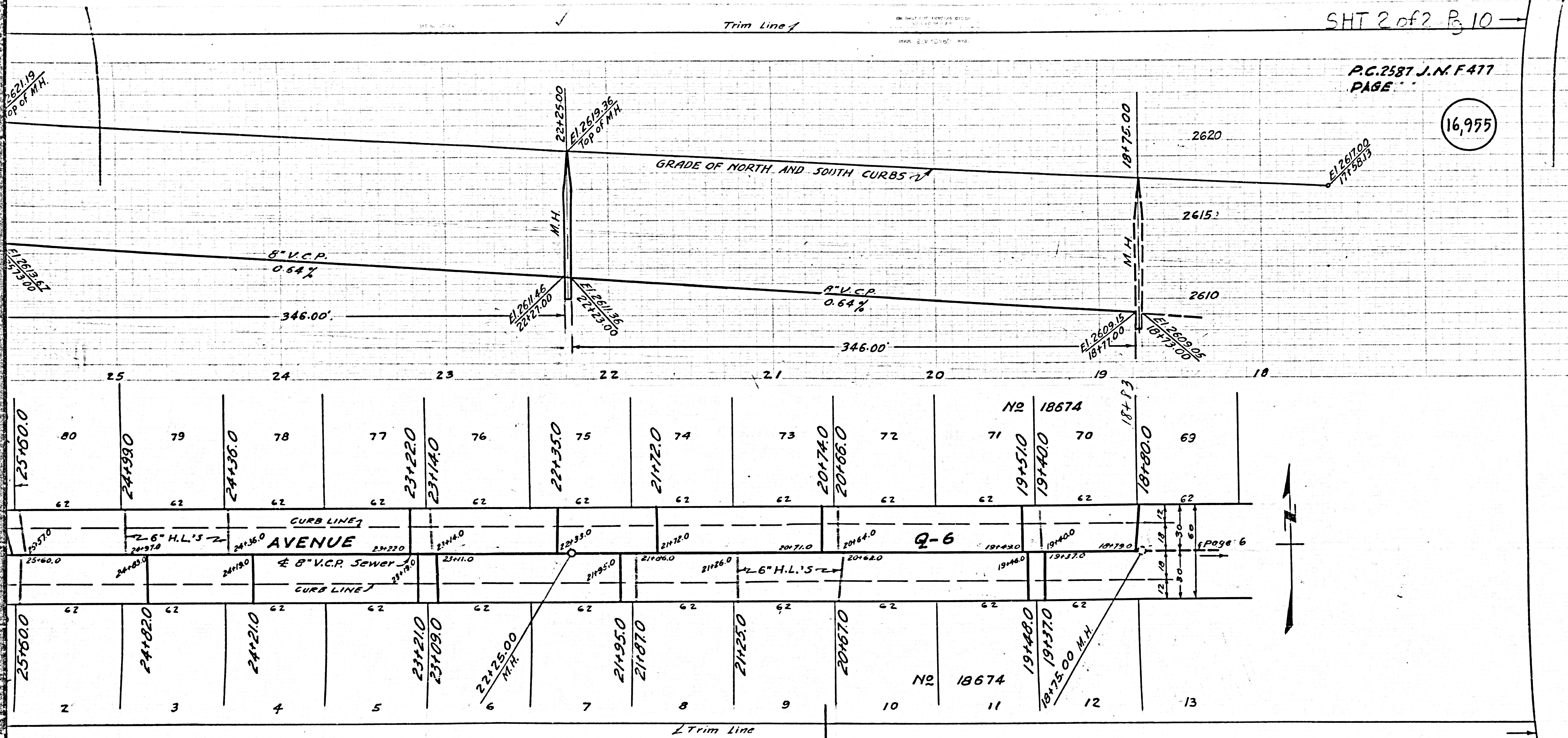
955



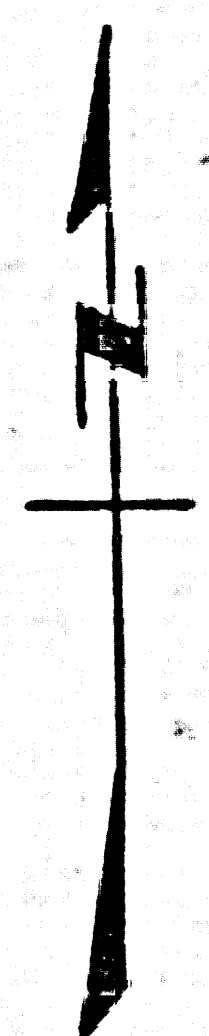
Page 77

Trim Line

16,955



page 6



Trim Line

