

97 J.N.F.488

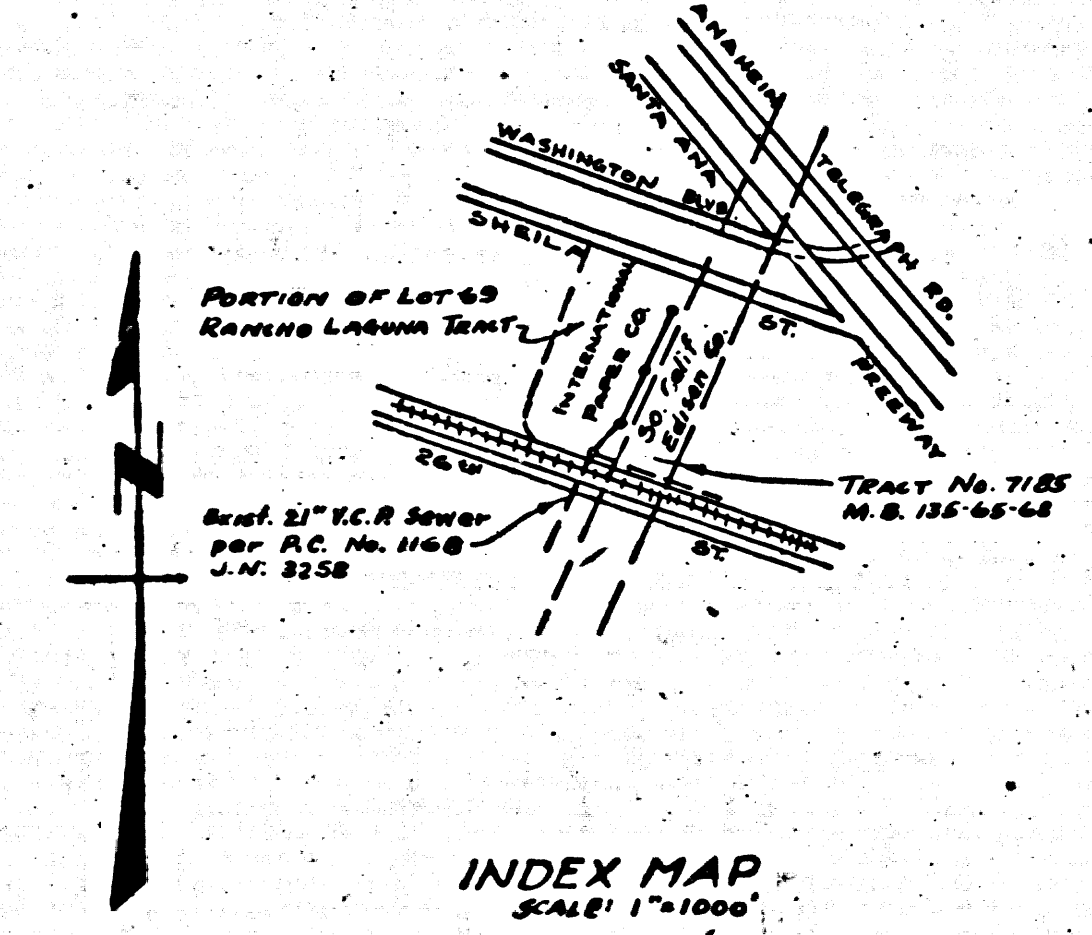
16,549

B.M. 5Y-934 El. 143.841, Spike in lead 5' West of B.C.R. at South West Corner of Fidelia Ave & Washington Blvd.

EAST LOS ANGELES BLDG. DIST. 6

- NOTE: NO REPRESENTATIVE OF THE COUNTY ENGINEER WILL SURVEY OR LAY OUT ANY PORTION OF THE WORK. THE OWNER OR HIS AUTHORIZED REPRESENTATIVE SHALL FURNISH THE COUNTY ENGINEER WITH GRADE SHEETS AND STAKES FOR ALL HOUSE CONNECTIONS AND Y BRANCHES AND SHALL PROVIDE STAKES FOR THEM AT THEIR PROPER LOCATIONS WITH STATIONING PLAINLY MARKED. ANY CHANGE IN LOCATION SHALL BE REQUESTED IN WRITING BY THE OWNER OR HIS REPRESENTATIVE. NO REVISIONS SHALL BE MADE IN THESE PLANS WITHOUT APPROVAL OF THE COUNTY ENGINEER.
1. USE STANDARD MANHOLE FRAMES AND COVERS, S-8-117
 2. USE STANDARD STRENGTH PIPE EXCEPT AS NOTED.
 3. USE CEMENT MORTAR FOR ALL VITRIFIED CLAY PIPE JOINTS.
 4. RESURFACE ALL TRENCH WITHIN PAVED AREA TO MEET L.A. COUNTY ROAD DEPT. REQUIREMENTS.
 5. ENCLOSE FOUR FEET OF SEWER AT POINTS OF INTERFERENCE WITH POLES, S-8-119.
 6. ALL STRUCTURES SHALL BE BRICK SEWER STRUCTURES, S-8-108.
 7. PROVIDE STAKES ON THE PROPERTY LINES OR PROPERTY LINES PRODUCED AT RIGHT ANGLES TO THE SEWER LINE AT THE CENTER LINE OF EACH MANHOLE.
 8. FOR ALLOWABLE LEAKAGE TEST USE FORMULA NO. 1, SPECS. SEC. 51.

SHEET NO.	PAGES
1	1-2



INDEX MAP
SCALE: 1"=1000'
RC. 2597 J.N.F.488

PROFILE, ALIGNMENT, AND GRADE OF SANITARY SEWERS TO BE CONSTRUCTED IN

PC.2597 J.N.F.488
Page 1.

LOT 69 OF THE RANCHO LAGUNA TRACT FROM 12' NORTH OF SOUTH LOT LINE TO 134' SOUTH OF E SHELBA ST. SEWER LINE ADJACENT TO TRACT NO. 7185, M.B. 135-65-68 APPROX. 94' TO 146' W.L.Y.

16,549

PRIVATE CONTRACT NO. 2597 W. S. 36

SHEET 1 OF 1 SHEET
SCALE: VERT. 1"=4'
HORIZ. 1"=40'
FEB. 1953
PREPARED IN THE OFFICES OF:
CALDWELL MASON & MUNTZ ARCHITECT & ENGINEERS
BY *C. Keith Mason* Reg. C.E. No. 7677

FOR LEGEND SEE PLAN NO. S-a-64

NOTE: GRADES TO WHICH THIS IMPROVEMENT IS TO BE CONSTRUCTED ARE SHOWN ON PLANS AND PROFILES. GRADE POINTS FOR TOP OF CURB, CENTER LINE OF STREETS, OR CENTER LINE OF ALLEY ARE SHOWN BY CIRCLES ON PROFILES. AT ALL POINTS BETWEEN DESIGNATED POINTS THE GRADE SHALL BE ESTABLISHED SO AS TO CONFORM TO A STRAIGHT LINE DRAWN BETWEEN SAID DESIGNATED POINTS. ELEVATIONS ARE IN FEET ABOVE U.S.C. DATUM OR MEAN SEA LEVEL. THIS DRAWING AND THE DATA HEREON ARE HEREBY MADE A PART OF THE SPECIFICATIONS. WORK SHALL BE CONSTRUCTED ACCORDING TO SPECIFICATIONS ON FILE IN THE OFFICE OF THE COUNTY ENGINEER AND SHALL BE PROSECUTED ONLY IN THE PRESENCE OF THE COUNTY ENGINEER. BEFORE WORK CAN BE STARTED THE CONTRACTOR MUST OBTAIN A PERMIT TO EXCAVATE IN COUNTY STREETS FROM THE L.A. COUNTY ROAD DEPT., 100 W. 2ND ST. AND MAKE A DEPOSIT WITH THE COUNTY ENGINEER, 229 L.A. COUNTY ENGINEERING BUILDING, SUFFICIENT TO COVER THE COST OF CONSTRUCTION INSPECTION AND RECORD PLANS. APPROVAL OF THIS PLAN BY THE COUNTY OF LOS ANGELES DOES NOT CONSTITUTE A REPRESENTATION AS TO THE ACCURACY OF THE LOCATION OF, OR THE EXISTENCE OR NON-EXISTENCE OF, ANY UNDERGROUND UTILITY, PIPE, OR STRUCTURE WITHIN THE LIMITS OF THIS PROJECT. THIS NOTE APPLIES TO ALL SHEETS.

COUNTY OF LOS ANGELES, CALIFORNIA

APPROVED, WILLIAM J. FOX, COUNTY ENGINEER
BY *W. J. Fox*
CHIEF DEPUTY

APPROVED, A.M. RAWN, CHIEF ENGR. OF SAN. DIST. NO. 2
BY *A.M. Rawn*
OFFICE ENGINEER

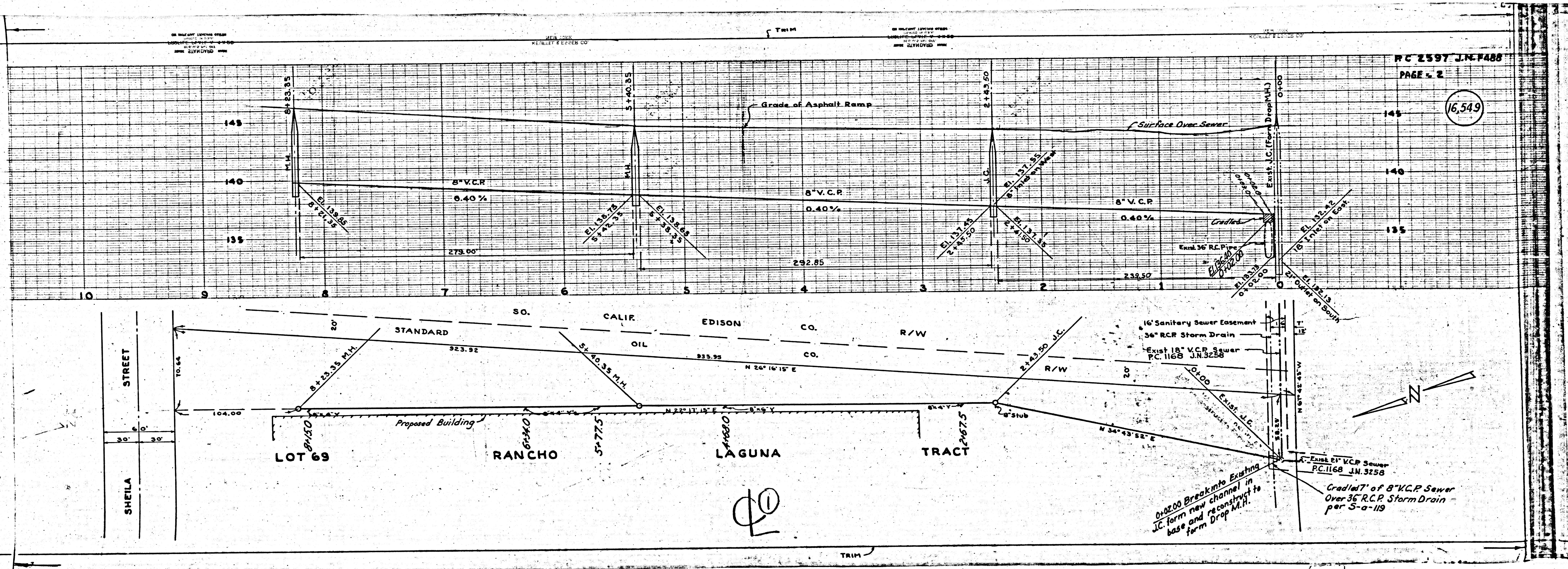
CHECKED BY *R. B. Rawn*
OFFICE OF COUNTY ENGINEER, REG. C.E. No. 2860

checked 6-22-53 *W. J. Fox*

R.B.

RECEIVED
MAY 31 1953
CITY ENGINEER'S OFFICE
COUNTY OF LOS ANGELES

PC 2597
M.W.
1025.09
60.5281



LO