

PUENTE BLDG. DIST. 2

PROFILE, ALIGNMENT AND GRADE OF
SANITARY SEWER
TO BE CONSTRUCTED IN

SANITARY SEWER RIGHT OF WAY
IN LOT 63, TRACT NO 621

PRIVATE CONTRACT NO. 2600
W. S. 57
SHEET 1 OF 1 SHEETS
SCALE VERT. 1" = 4'
HORIZ. 1" = 40'
FEBRUARY 1953

PREPARED IN THE OFFICES OF
RODM & ELLS ENGINEERS
BY *K. S. Temple* 3-17-53

FOR LEGEND SEE PLAN NO. S-a-64

NOTE:
GRADES TO WHICH THIS IMPROVEMENT IS TO BE CONSTRUCTED ARE SHOWN ON PLANS AND
PROFILES GRADE POINTS FOR TOP OF CURBS CENTER LINE OF STREETS OR CENTER LINE OF ALLEY ARE
SHOWN BY CIRCLES ON PROFILES AT ALL POINTS BETWEEN DESIGNATED POINTS THE GRADE SHALL BE
ESTABLISHED SO AS TO CONFORM TO A STRAIGHT LINE DRAWN BETWEEN SAID DESIGNATED POINTS
ELEVATIONS ARE IN FEET ABOVE U.S.C.S. DATUM OR MEAN SEA LEVEL.
THIS DRAWING AND THE DATA HEREON ARE HEREBY MADE A PART OF THE SPECIFICATIONS
WORK SHALL BE CONSTRUCTED ACCORDING TO SPECIFICATIONS ON FILE IN THE OFFICE OF THE
COUNTY ENGINEER AND SHALL BE PROSECUTED ONLY IN THE PRESENCE OF THE COUNTY ENGINEER
BEFORE WORK CAN BE STARTED THE CONTRACTOR MUST OBTAIN A PERMIT TO LOCATE IN
COUNTY STREETS FROM THE L.A. COUNTY ROAD DEPT. 108 W. 5TH ST. AND MAKE A DEPOSIT
WITH THE COUNTY ENGINEER, 733 L.A. COUNTY ENGINEERING BUILDING, SUFFICIENT TO COVER
THE COST OF CONSTRUCTION, INSPECTION AND RECORD PLANS.
APPROVAL OF THIS PLAN BY THE COUNTY OF LOS ANGELES DOES NOT CONSTITUTE
A REPRESENTATION AS TO THE ACCURACY OF THE LOCATION OF, OR THE EXISTENCE OR
NON-EXISTENCE OF ANY UNDERGROUND UTILITY, PIPE, OR STRUCTURE WITHIN THE LIMITS
OF THIS PROJECT. THIS NOTE APPLIES TO ALL SHEETS.

COUNTY OF LOS ANGELES, CALIFORNIA

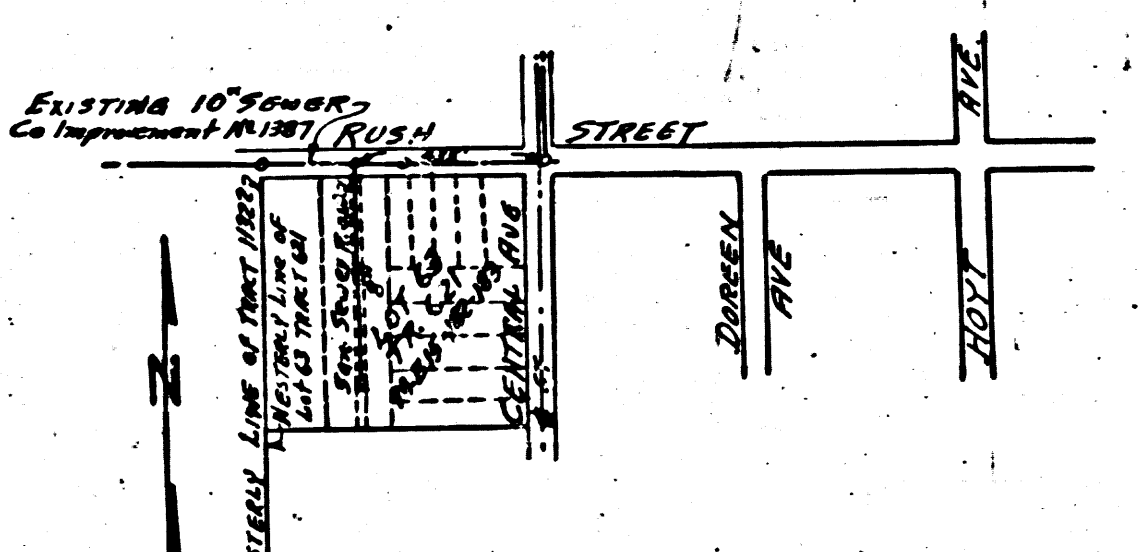
APPROVED WILLIAM J. FOX, COUNTY ENGINEER
BY *W. J. Fox*
CHIEF DEPUTY

APPROVED A.M. RAWN
CHIEF ENGR. OF SAN. DIST. NO. 15
BY *A.M. Rawn*
OFFICE ENGINEER

CHECKED BY: *Richard E. Kuhn* 5-11-53
OFFICE OF COUNTY ENGINEER, REG. C.E. NO. 7860

- NOTE: NO REPRESENTATIVE OF THE COUNTY ENGINEER WILL SURVEY OR LAY OUT ANY
PORTION OF THE WORK.
THE OWNER OR HIS AUTHORIZED REPRESENTATIVE SHALL FURNISH THE COUNTY
ENGINEER WITH GRADE SHEETS AND STAKES FOR ALL "HUGE LOTZEARLS" AND Y BRANNS
AND SHALL PROVIDE STAKES FOR THEM AT THEIR PROPER LOCATIONS WITH STATIONING
PLAINLY MARKED. ANY CHANGE IN LOCATION SHALL BE REQUESTED IN WRITING BY THE
OWNER OR HIS REPRESENTATIVE.
NO REVISIONS SHALL BE MADE IN THESE PLANS WITHOUT APPROVAL BY THE COUNTY ENGINEER
1. USE STANDARD MANHOLE FRAMES AND COVERS 3-0-117
 2. USE STANDARD STRENGTH PIPE
 3. USE JOINT COMPOUND B PER SEC. 51 OF SPEC. FOR VITRIFIED CLAY PIPE JOINTS
 4. RESURFACE ALL TRENCH WITHIN PAVED AREAS TO MEET L.A. COUNTY ROAD DEPT. REQUIREMENTS
 5. EXPOSE FOUR FEET OF SEWER AT POINTS OF INTERFERENCE WITH POLES, 3-0-118
 6. HOUSE LATERALS TO BE CONSTRUCTED WITH INVERTS AT PROPERTY LINE
6 FEET BELOW CURB GRADE
 7. ALL STRUCTURES SHALL BE BRICK SEWER STRUCTURES 3-0-106
 8. PARALLEL STAKES ON THE PROPERTY LINES OR PROPERTY LINES PRODUCED AT
RIGHT ANGLES TO THE CENTER LINE AT THE CENTER LINE OF EACH MANHOLE.
SEE SPEC. SEC. 51
 9. FOR HYDRAULIC DESIGN USE FORMULA 1792
 10. Construct Top of all structures in Right of Way 6" above finished grade

B.M.
McE 118. Rusk Street N. Side 72' E of E &
Edwards Avenue Spike in SW Cor Concrete
Slab at Sub Station ELEV. 246.62



IN LOT 63 TRACT NO. 621
 SANITARY SEWER RIGHT OF WAY
 P.C. 2600 J.N.F. 491
 SHEET 1 OF 1

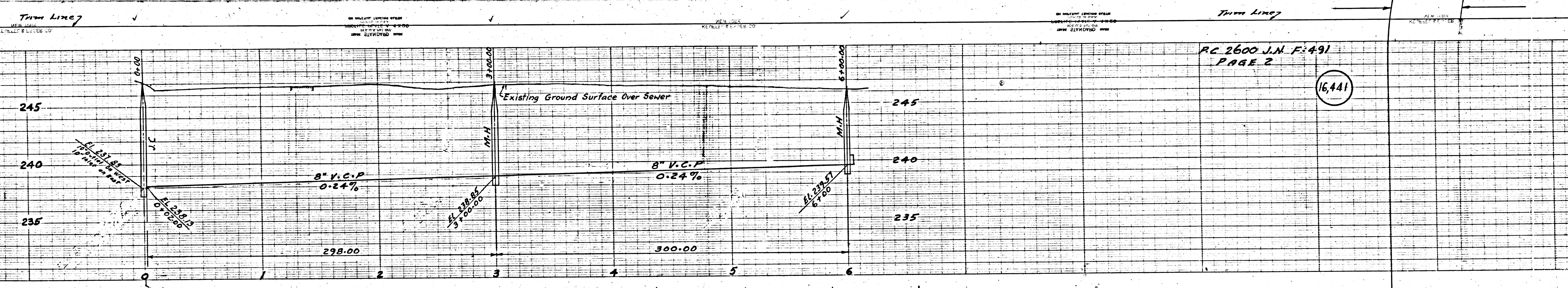
16,441

16,440

16

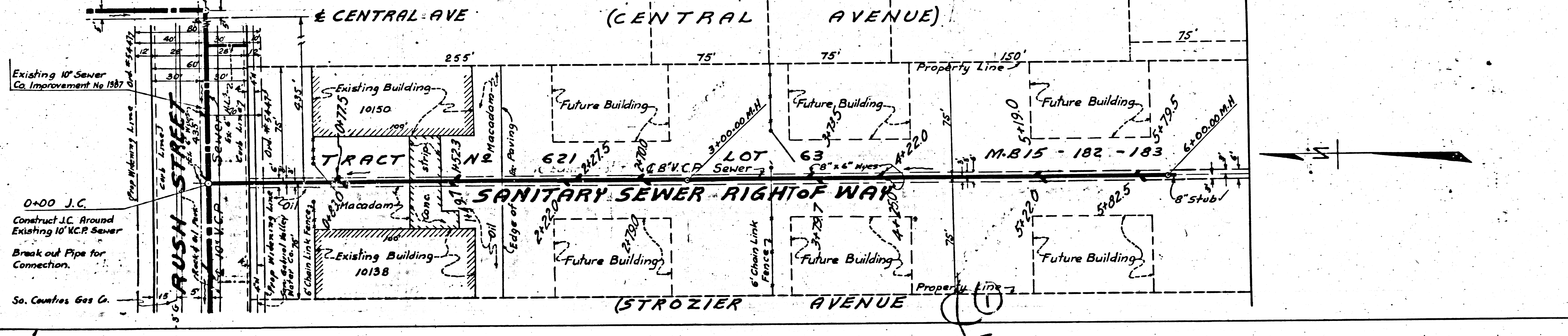
R.L.

1927 J.V. 0035 D.A. 2600
W.M. 13831 T.S.M. 1878 T.S.M. 1878 T.S.M. 1878 T.S.M. 1878



P.C. 2600 J.N. F:491
PAGE 2

(16,441)



0+00 J.C.
Construct J.C. Around
Existing 10" V.C.P. Sewer
Break out Pipe for
Connection
So. Counties Gas Co.

Trim Line