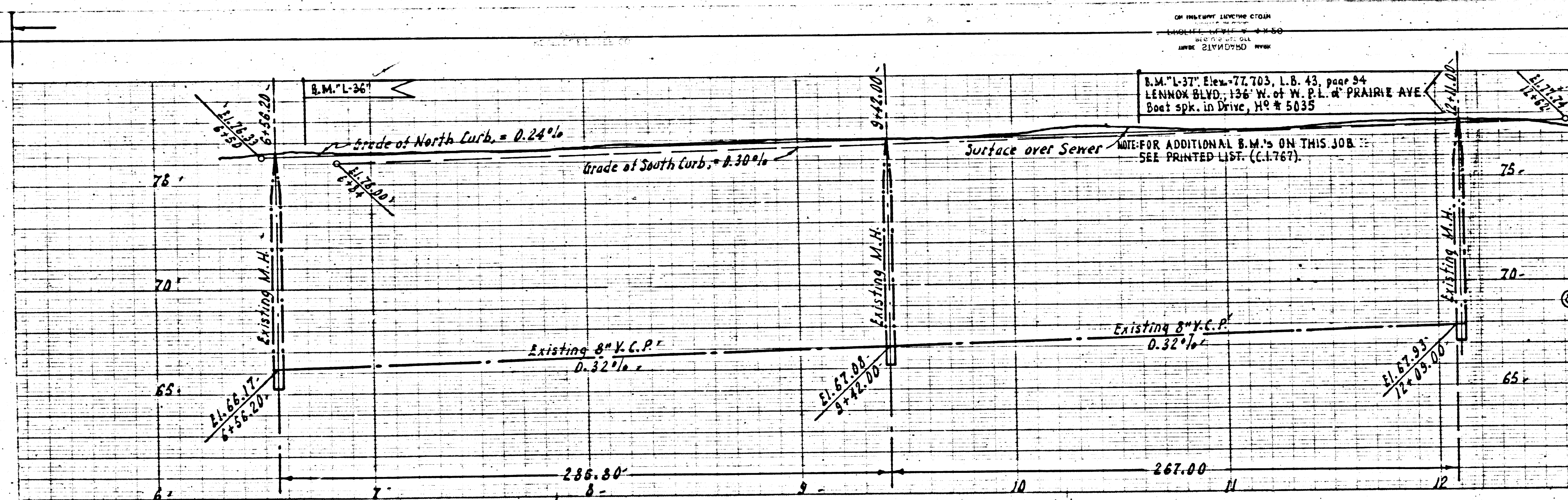
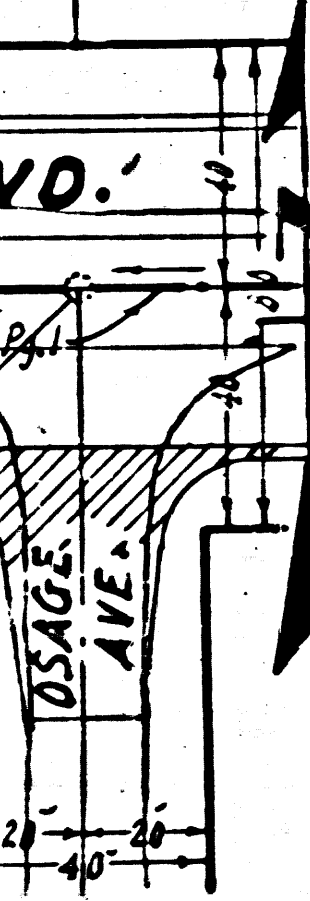


PC. 2604
J.N.A-249
PAGE 2

73
70
65
17,200



BLDG. DIST. 7 LENNOX

USE STANDARD STRENGTH PIPE.
USE CEMENT MORTAR FOR ALL VITRIFIED CLAY PIPE JOINTS, EXCEPT AS NOTED.
WHERE EXISTING HOUSE LATERALS STOP SHORT OF THE PROPOSED CURB, CONSTRUCT 6" VITRIFIED CLAY PIPE HOUSE LATERAL EXTENSIONS WITH 1/4" RISE PER FOOT TO PROPOSED CURB LINE.
WHERE PERMIT NUMBERS ARE INDICATED, REMOVE EXISTING 4" VITRIFIED CLAY PIPE WITHIN STREET R/W, AND REPLACE WITH 6" VITRIFIED CLAY PIPE, EXCEPT AS NOTED. INSTALL 6" x 4" REDUCERS AND 4" x 4" T-CLEANOUTS AT ENDS OF HOUSE LATERALS AT PROPERTY LINE.
CIRCLES AT ENDS OF EXISTING HOUSE LATERALS, WITHIN STREET R/W INDICATE APPROXIMATE DEPTHS OF TOPS OF PIPES AT THAT LOCATION.
TOPS OF ALL SEWER STRUCTURES TO BE ADJUSTED TO FINISHED GRADE.
ENCASE RECONSTRUCTED HOUSE LATERALS PER S-10-119 WHERE COVER IS LESS THAN FOUR FEET.

P.C. 2604 - J.N.A-249
PAGE 2

CASH CONTRACT NO. 727 (17,199)

PROFILE ALIGNMENT AND GRADE OF
SANITARY SEWERS
TO BE CONSTRUCTED IN
LENNOX BOULEVARD
BETWEEN PRAIRIE AVE AND HAWTHORNE AVE
PRIVATE CONTRACT NO. 2604 (3)
JOB NO. A249
PLAN NO. 2
ONE SHEET

SCALE: HORIZ. 1" = 100'
VERT. 1" = 10'
MARCH 1953
COUNTY OF LOS ANGELES, CALIFORNIA
WILLIAM J. FOX COUNTY ENGINEER
SUBMITTED *A.P. Collins* SANITATION ENGINEER
APPROVED *William J. Fox* CHIEF DEPUTY
APPROVED *John R. Kerner* ROAD COMMISSIONER
APPROVED *A.M. Rawm* CHIEF ENGINEER OF COUNTY SANITATION DISTRICT NO. 2
BY *[Signature]* OFFICE ENGINEER

FOR LEGEND
NOTE: GRADES TO WHICH THIS IMPROVEMENT IS TO BE CONSTRUCTED ARE SHOWN ON PLANS AND PROFILES. GRADE POINTS FOR TOP OF CURB, CENTER LINE OF STREET OR CENTER LINE OF ALLEY ARE SHOWN BY CIRCLES ON PROFILES. AT ALL POINTS BETWEEN DESIGNATED POINTS THE GRADE SHALL BE ESTABLISHED SO AS TO CONFORM TO A STRAIGHT LINE DRAWN BETWEEN SAID DESIGNATED POINTS. ELEVATIONS ARE IN FEET ABOVE U. S. G. S. DATUM OR MEAN SEA LEVEL. UNIT PRICES FOR ADDITIONAL WORK WHICH MAY BE REQUIRED BUT WHICH CANNOT BE ASCERTAINED IN ADVANCE, SHALL BE SUBMITTED IN THE PROPOSAL. THIS DRAWING AND THE DATA HEREON ARE HEREBY MADE A PART OF THE SPECIFICATIONS.

REFERENCES	DESIGNED	E. ACEVEDO	FEB. 1953
W. S. 24	TRACED	E. ACEVEDO	MARCH 1953
A. B. 469	CHECKED	W.F. BRUSHER	MARCH 1953
L. B. 413-431			

(17,199)

PC. 2604
J.N.A-249
PAGE 2
CASH CONTRACT NO. 727

CASH CONTRACT NO. 727

ACRES
11.28
(3)

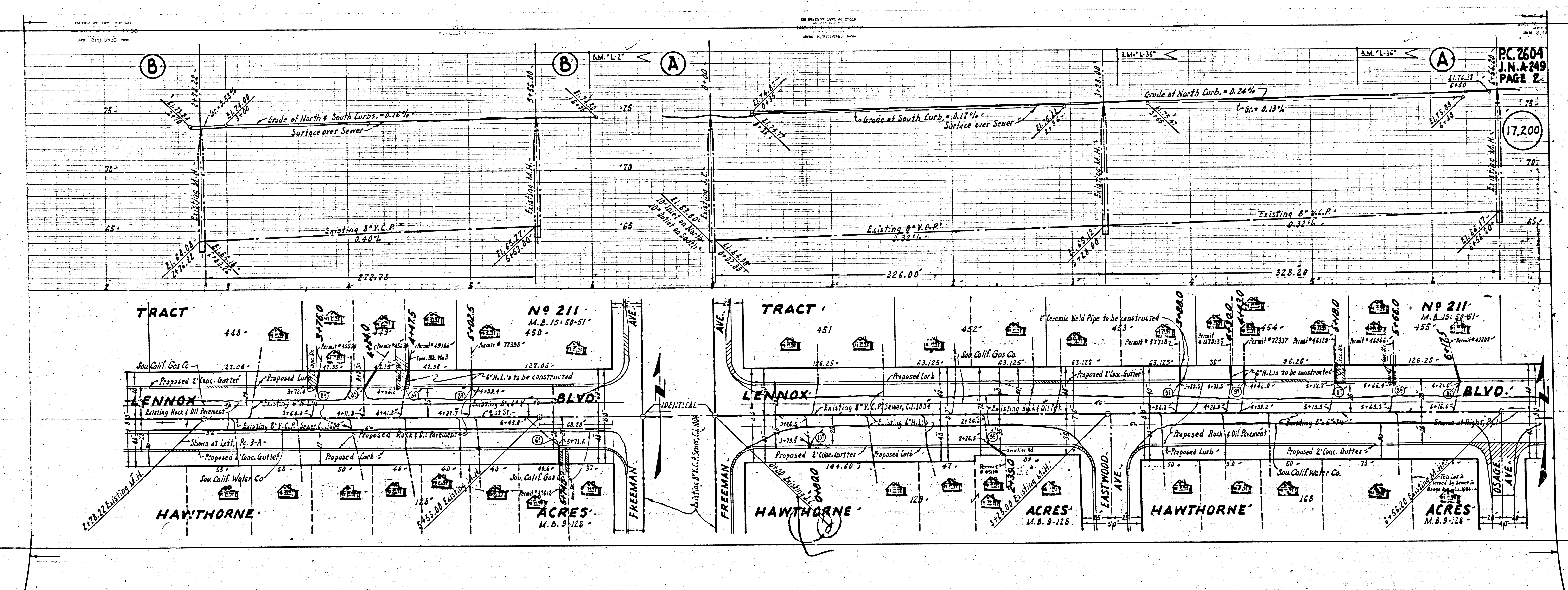
3/1/53
UG. Checked
J.R.W. 3-1-53

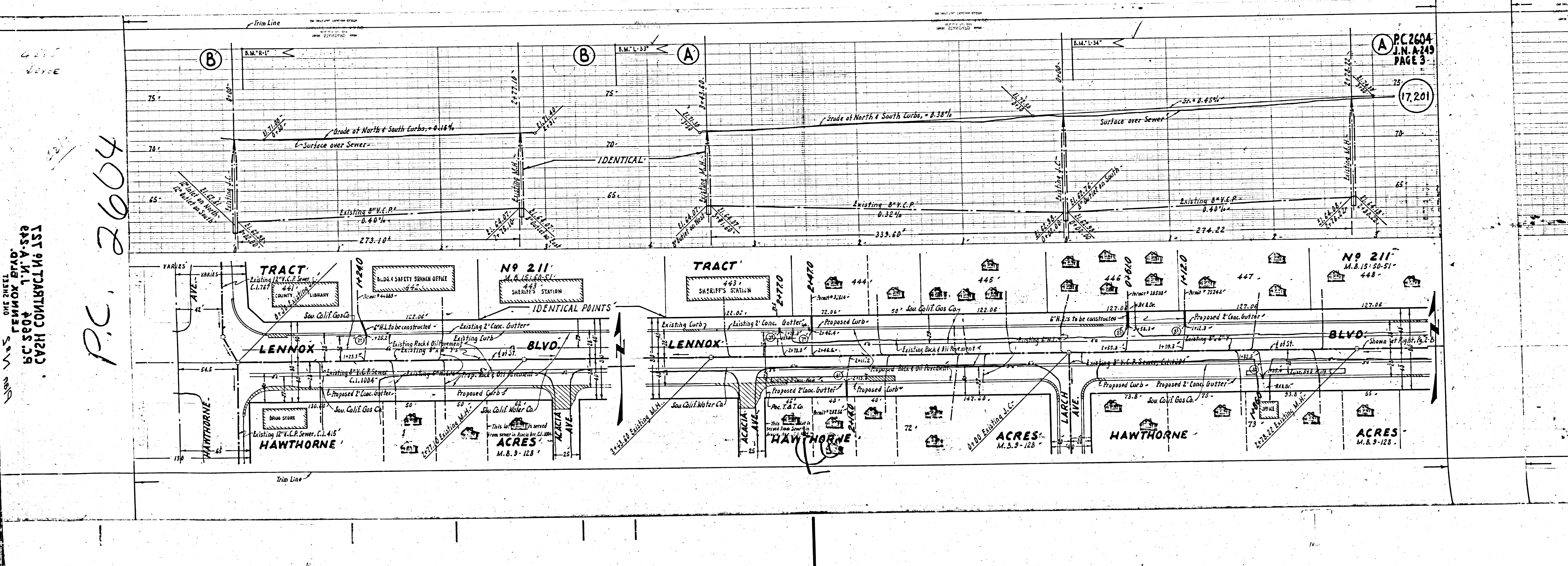
PC 2604
J.N.A. 149
PAGE 2

(17,201)

PC 2604
J.N.A. 149
PAGE 2

(17,200)





A PC2604
J.N.A.249
PAGE 3

(17,201)

ONE SHEET
 LENNOX BLVD
 1111-580
 CIVIL ENGINEERING

P.C. 2604

17,201 Existing M.H.