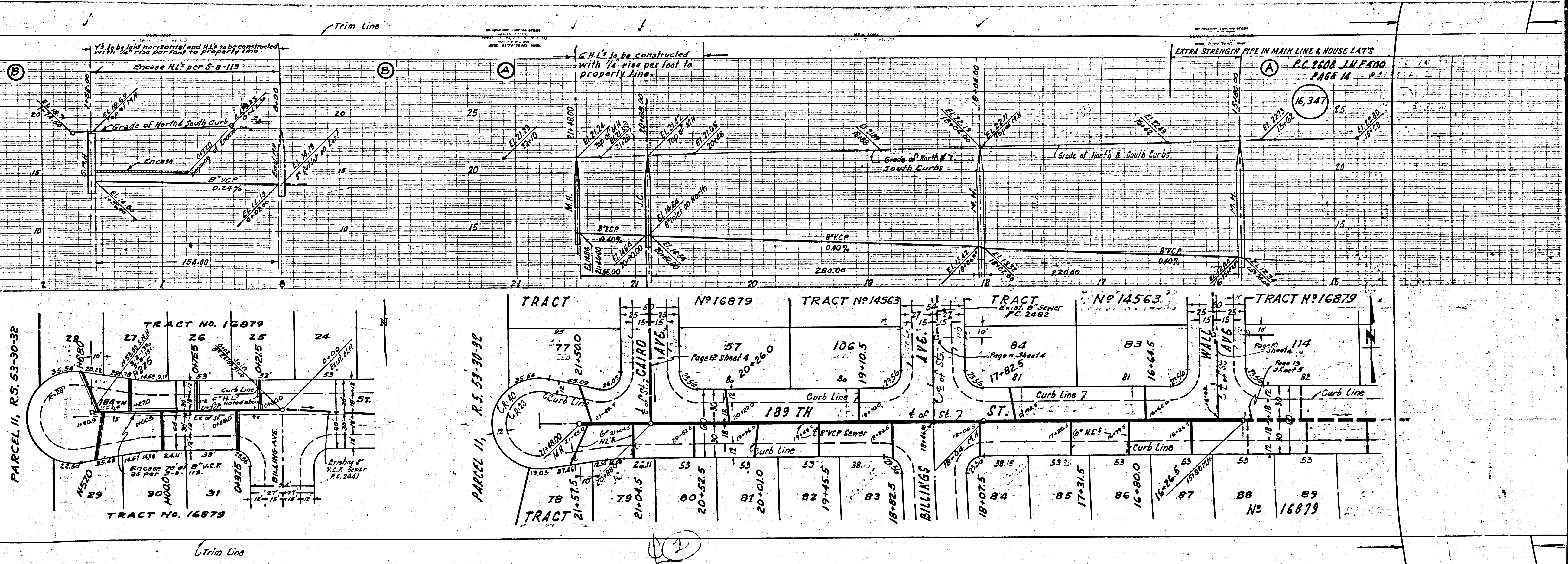




16,348



LENNOX

Trim Line 7

BM 103Y Met. Water Dist. Brass Cap.  
near surface 6277. west of E. Av-  
lon Blvd. 36 ft. north of E. Victoria  
St. B.M. Elev. 46.708.

PROPOSED ALIGNMENT AND GRADE OF  
SANITARY SEWERS  
FOR THE REDEVELOPMENT OF  
**TRACT No 16879**

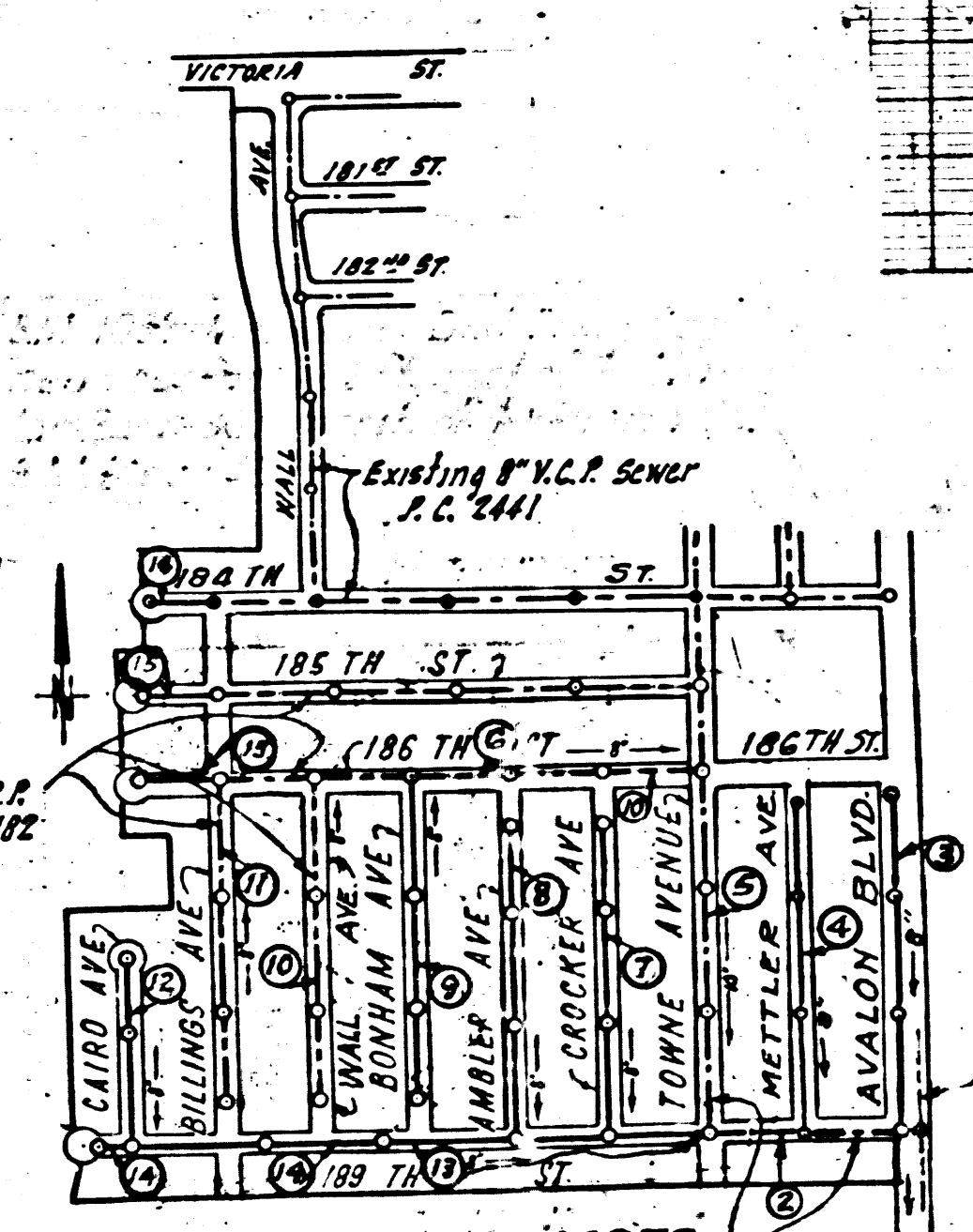
P.C. 2608  
J.N. F500  
PAGE 1

16,334

FOR THE CONTRACT No. 2608  
NOVEMBER, 1952

CLAYTON R. STAPLES  
CLAYTON R. STAPLES, R.E. & E.C.E.

ANTON BLVD.  
189TH STREET



SHEET NO	PAGES
1	1-3
2	4-6
3	7-9
4	10-12
5	13-18

TRACT No 16879  
INDEX MAP  
SCALE: 1" TO 600'  
P.C. 2608 J.N.F.

Existing 15" V.C.P. Sewer  
No. 2405

Trim Line

COUNTY OF LOS ANGELES, CALIFORNIA  
APPROVED: WILLIAM J. FOZ, COUNTY ENGINEER

BY: F.W. Pore  
ASST. CHIEF DEPUTY

APPROVED: A.M. RAWN  
CHIEF ENGR., CO. SAN. DIST. No 8

BY: J. B. J.  
OFFICE ENGINEER

CHECKED BY: Richard E. Kuban 3-5-53  
OFFICE OF COUNTY ENGINEER, REG. CE. No 7962

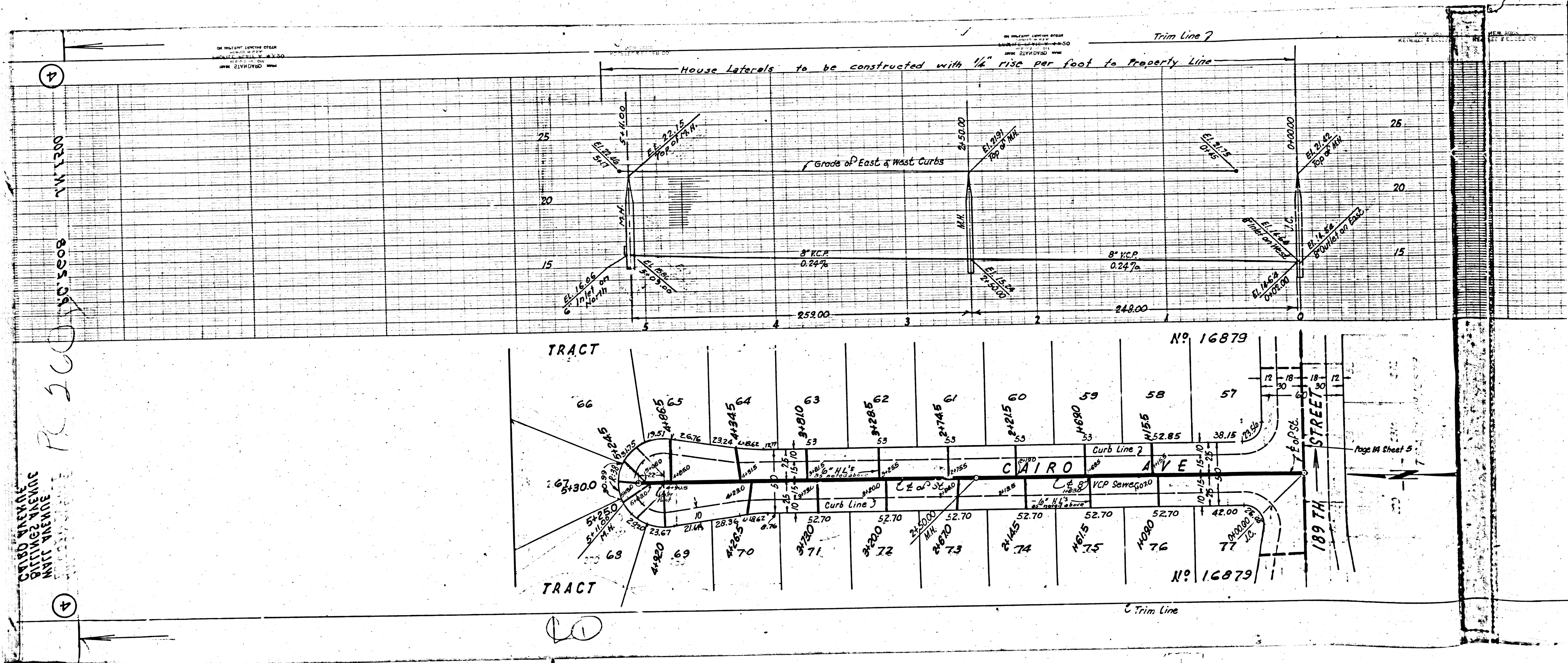
Checked 5-18-53 McLaren

RECEIVED  
NOV 18 1952  
SANTA ANITA

P.C. 2608

R.S.





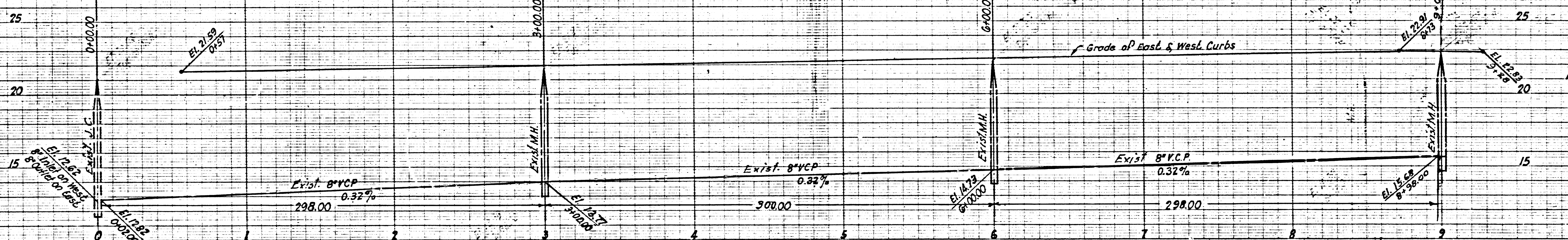


Trim Line 7  
 PC 2608 I.N. F500  
 PAGE 11  
 16,344

Trim Line 7  
 PC 2608 I.N. F500  
 PAGE 10  
 16,343

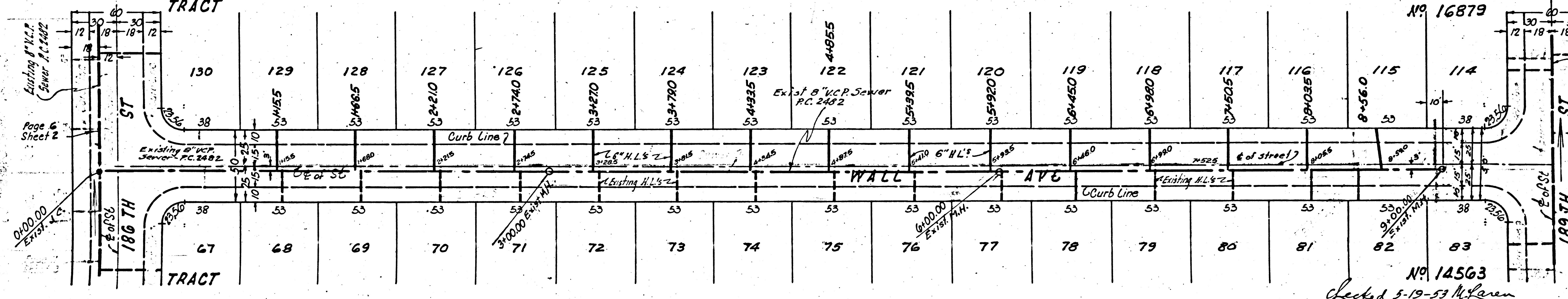
Note: Stations of Exis. Wyes to be obtained from County Engineer's Office.

Note: Stations of Exis. Wyes to be obtained from County Engineer's Office.



Page 14 Sheet 5

Page 14 Sheet 3  
 RECEIVED  
 MAR 15 1953  
 L.A. COUNTY ENGINEER  
 DIVISION OF HIGHWAYS



Checked 5-19-53 McLaren

R.S.

Trim Line

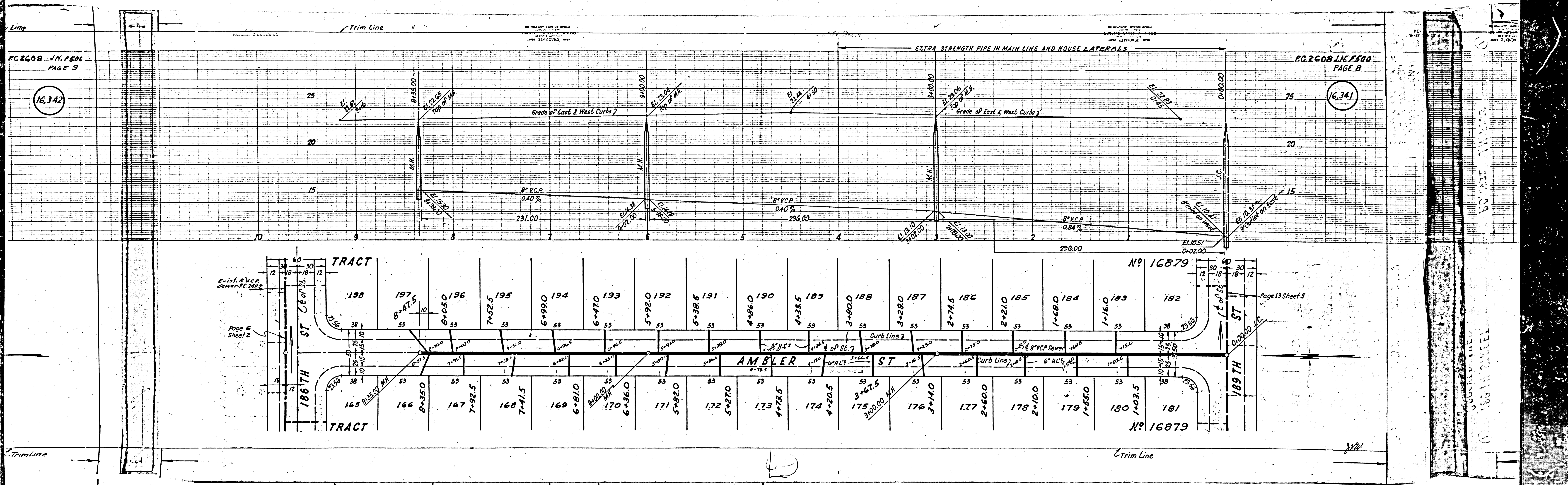
Trim Line





16,342

16,341



Exist. 8" VCP  
Sewer PC 2622

Page 6  
Sheet 2

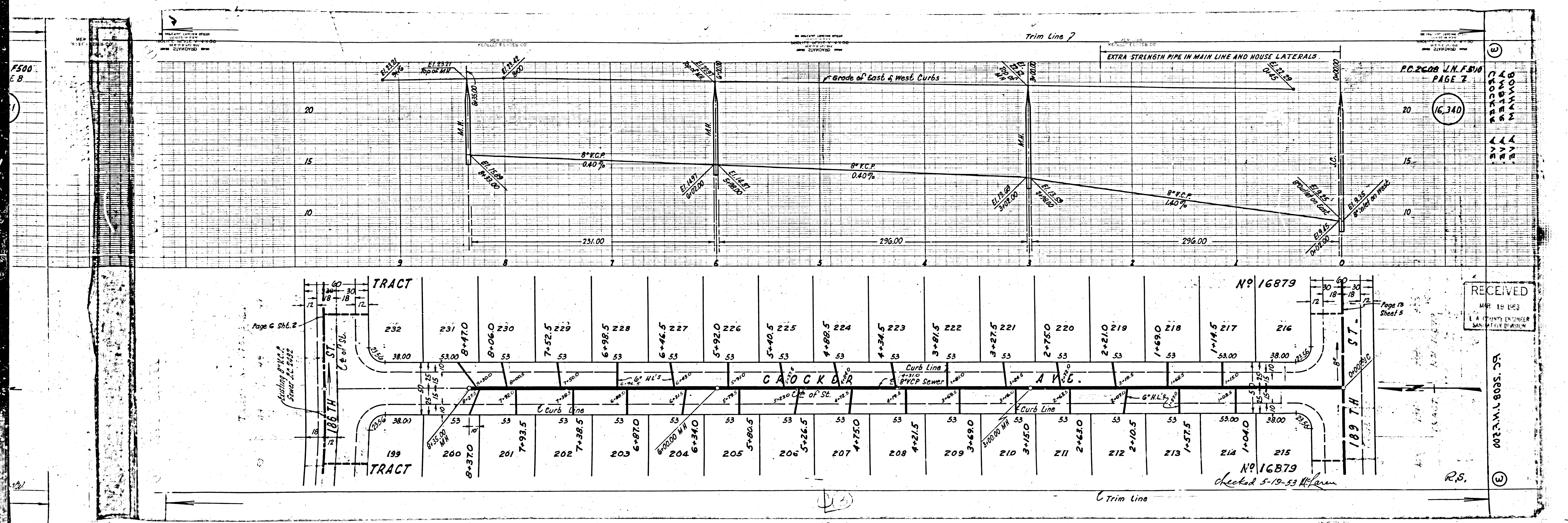
No 16879

Page 13 Sheet 5

No 16879

186 W. GALLEY

186 W. GALLEY



ON MILLING, LAYING STEEL  
REINFORCED CONCRETE  
PIPE, ALL  
DIMENSIONS

NEW YORK  
KENNEDY & BATES CO.

ON MILLING, LAYING STEEL  
REINFORCED CONCRETE  
PIPE, ALL  
DIMENSIONS

NEW YORK  
KENNEDY & BATES CO.

ON MILLING, LAYING STEEL  
REINFORCED CONCRETE  
PIPE, ALL  
DIMENSIONS

Trim Line 7

EXTRA STRENGTH PIPE IN MAIN LINE AND HOUSE LATERALS

PC.2608 J.N.F.510  
PAGE 7

BOHANNAN  
WATER  
WORKS  
L.L.A.

16,340

RECEIVED  
MAR 18 1953  
L.A. COUNTY ENGINEER  
SANITATION DIVISION

SC 5608 1 W.E.200

No 16879

No 16879

checked 5-19-53 M. L. L.

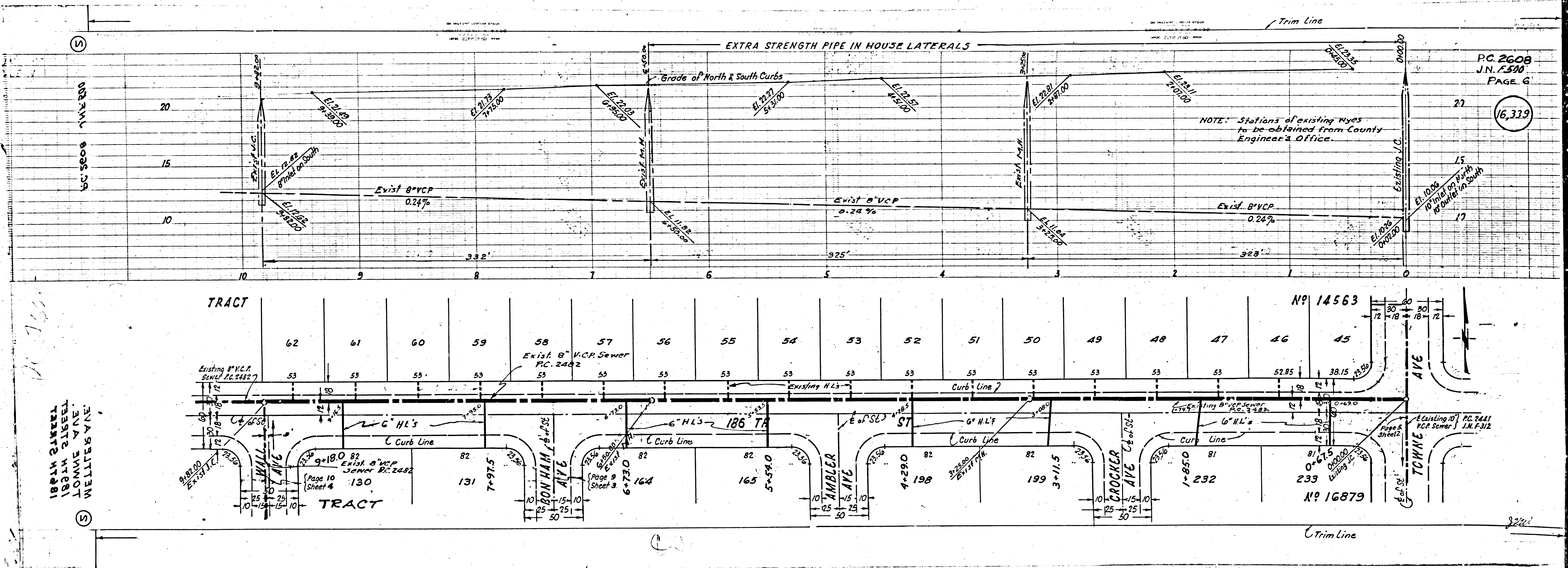
R.S.

Trim Line

Page 6 SHE. 2  
Location of V.C.P. Sewer at Stage

Page 13  
Sheet 5

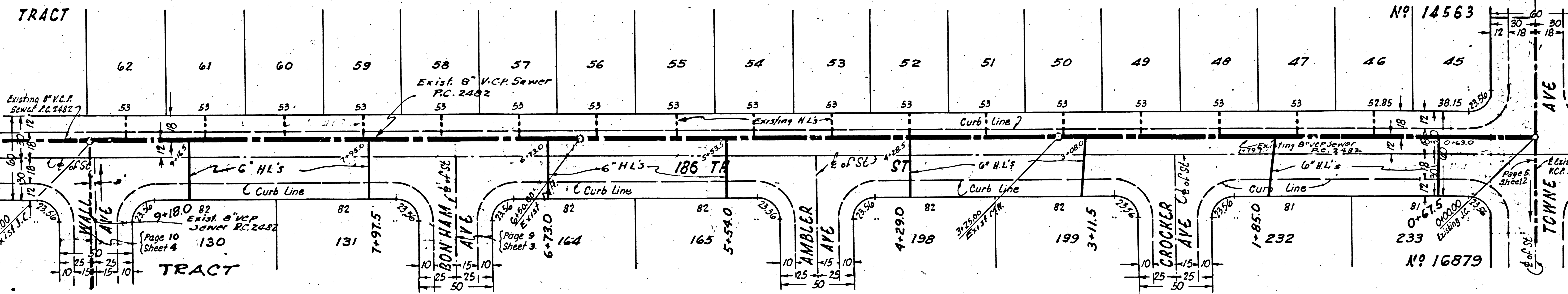
232	231	230	229	228	227	226	225	224	223	222	221	220	219	218	217	216
38.00	53.00	53	53	53	53	53	53	53	53	53	53	53	53	53	53.00	38.00
186 TH ST	187 TH ST	188 TH ST	189 TH ST	190 TH ST	191 TH ST	192 TH ST	193 TH ST	194 TH ST	195 TH ST	196 TH ST	197 TH ST	198 TH ST	199 TH ST	200 TH ST	201 TH ST	202 TH ST
199	200	201	202	203	204	205	206	207	208	209	210	211	212	213	214	215



PC 2608  
J.N. F.500  
PAGE 6

(16,319)

NOTE: Stations of existing manholes to be obtained from County Engineer's Office.



1814 STREET  
1814 STREET  
LOWME AVE.  
WELLES AVE.

PC 2441  
J.N. F.312

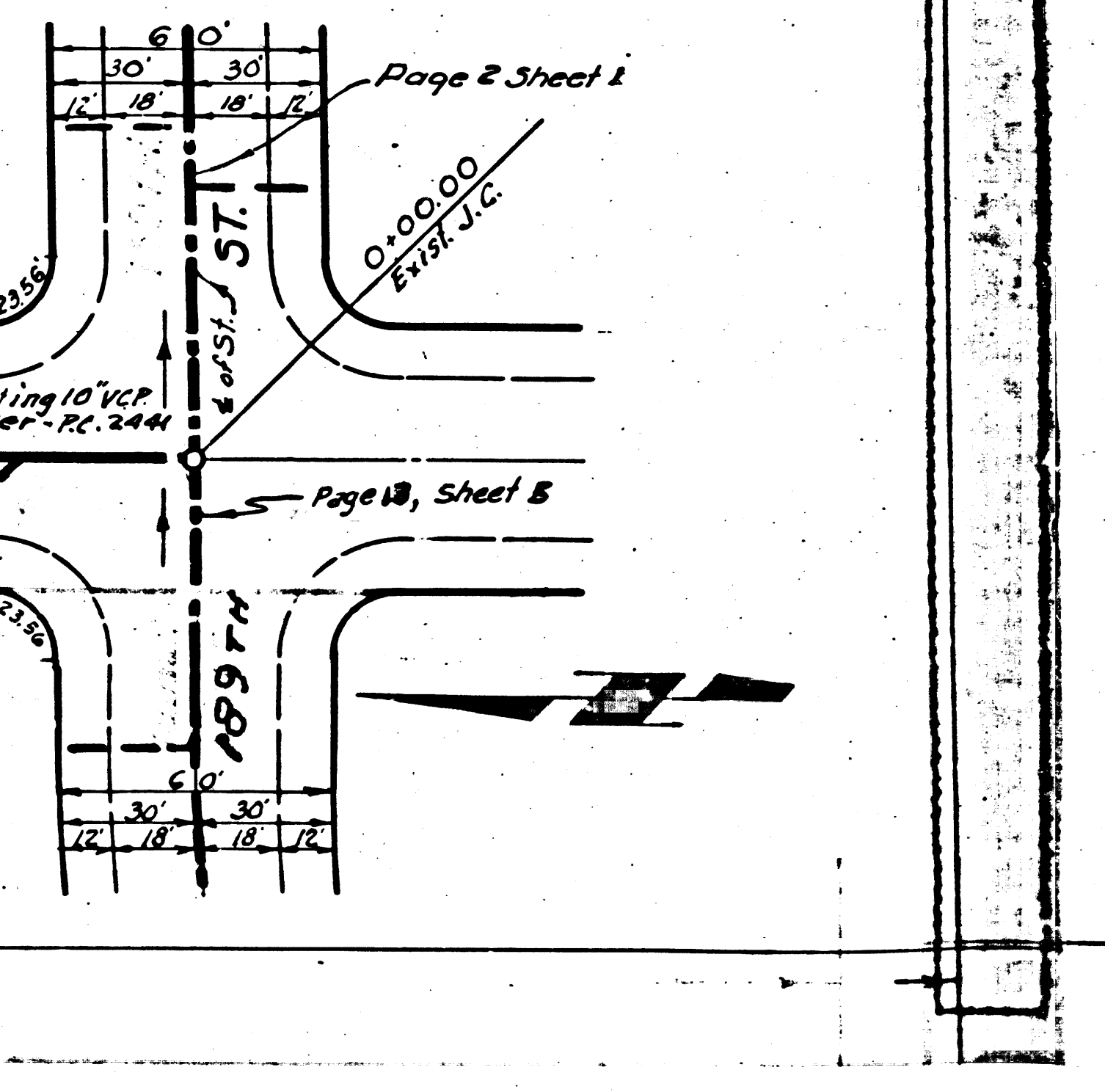
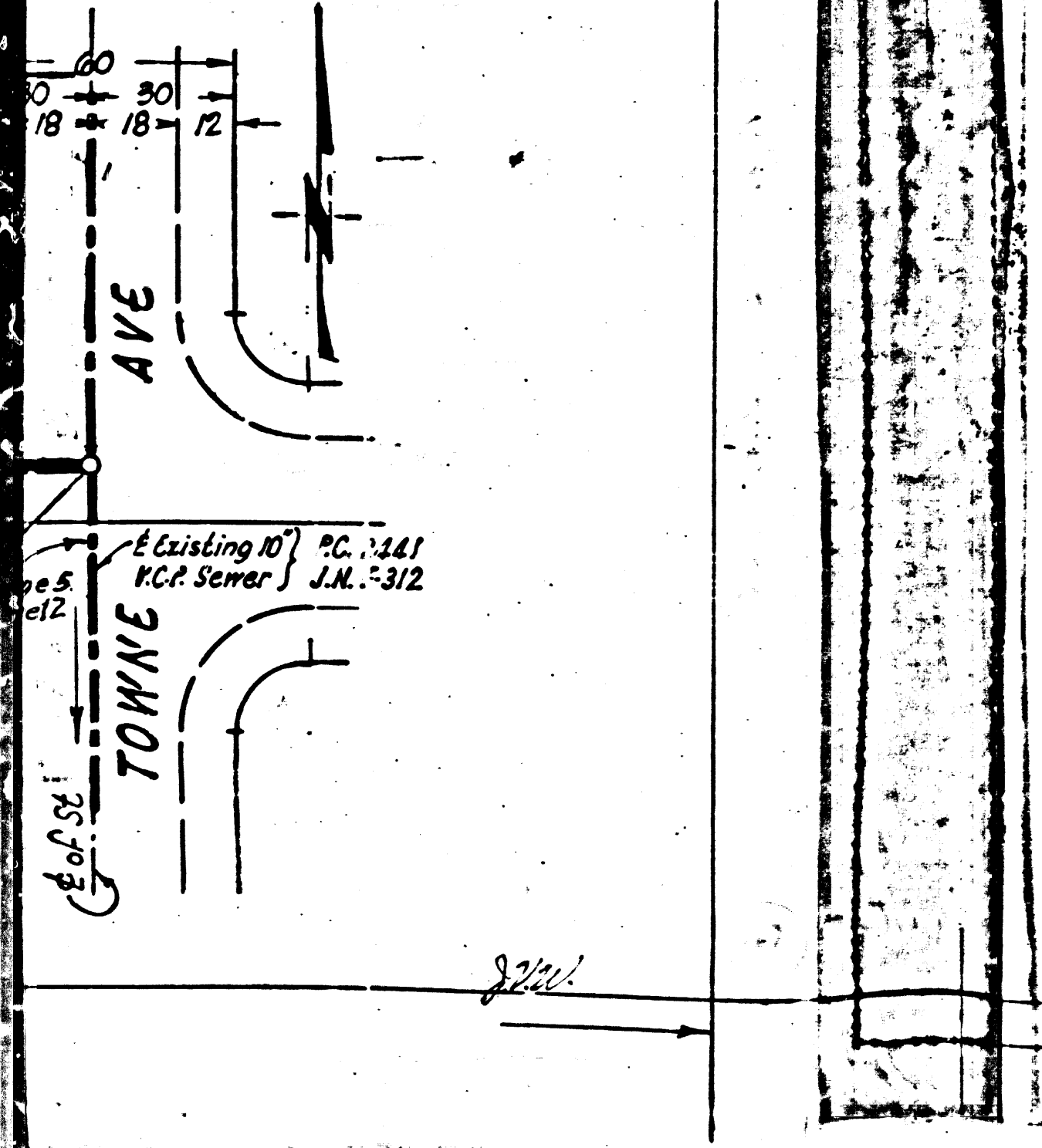
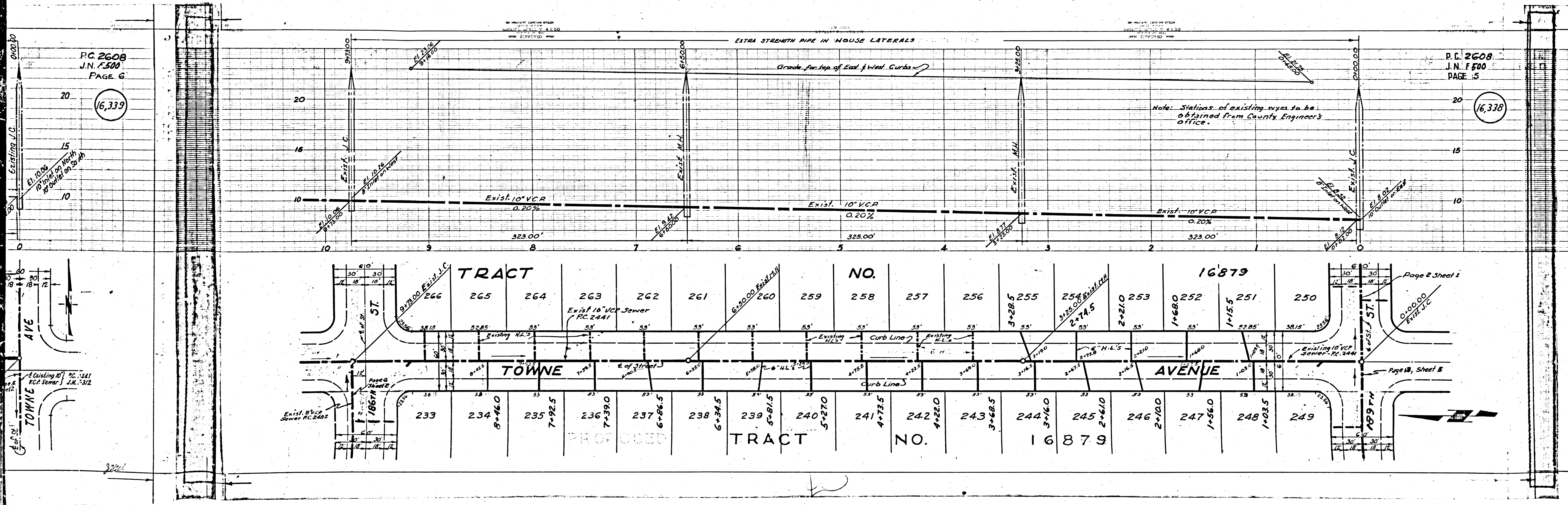
Trim Line

PC 2608  
J.N. F 500  
PAGE 6

(16,339)

P.C. 2608  
J.N. F 500  
PAGE 5

(16,338)



PROPOSED

TRACT

NO.

16879

Page 2 Sheet 1

Page 10, Sheet 5



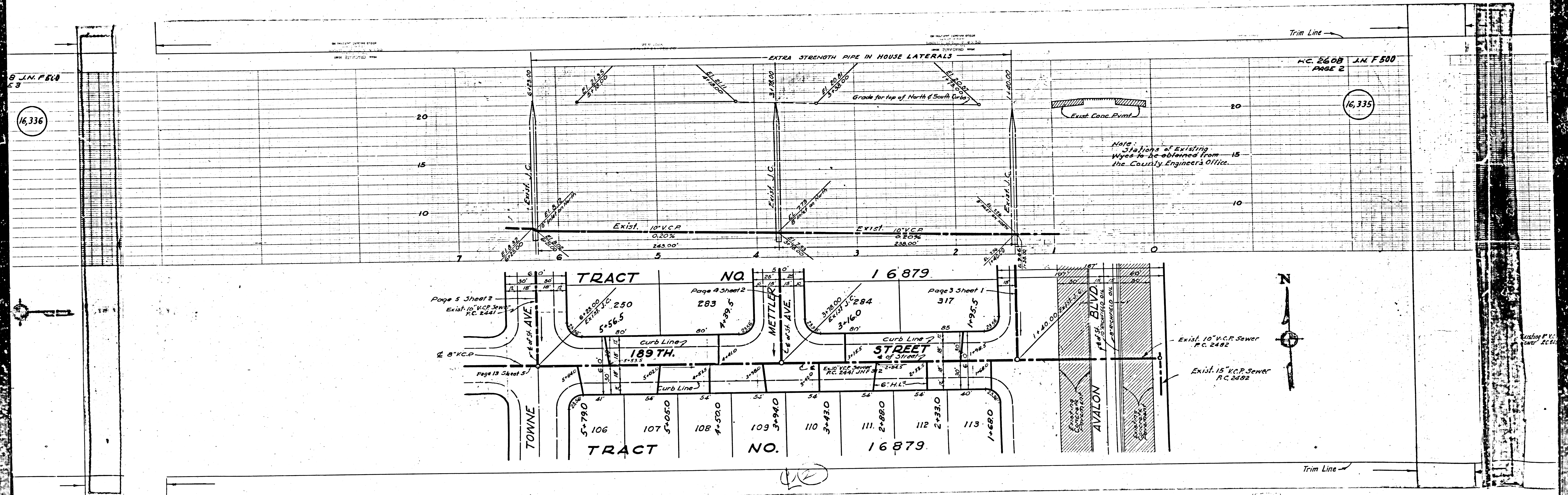


9 J.N.F. 500  
E3

16,336

W.C. 2608 J.N.F. 500  
PAGE 2

16,335



Note: Stations of Existing Wyes to be obtained from the County Engineer's Office.

Exist. 10" V.C.P. Sewer P.C. 2482  
Exist. 15" V.C.P. Sewer P.C. 2482

Page 5 Sheet 2  
Exist. 10" V.C.P. Sewer P.C. 2441

Page 4 Sheet 2  
Exist. 10" V.C.P. Sewer P.C. 2441

Page 3 Sheet 1  
Exist. 10" V.C.P. Sewer P.C. 2441

Page 18 Sheet 5

Trim Line