

16,874

1  
COSMINE AVE.  
EAST 21

RECEIVED  
MARCH 21 1953  
COUNTY ENGINEER  
STATION DIVISION  
16,874  
71W-E-204 1

PROFILE, ALIGNMENT, AND GRADE OF  
SANITARY SEWERS  
TO BE CONSTRUCTED IN  
TRACT NO. 17721

PRIVATE CONTRACT NO. 2610  
W.S. 24  
SHEET 1 OF 4 SHEETS  
SCALE VERT. 1" = 4'  
HORIZ. 1" = 40'  
MARCH 1953  
PREPARED IN THE OFFICES OF  
LOS ANGELES INVESTMENT CO.  
BY *O. K. Henderson*  
FOR LEGEND SEE PLAN NO. S-a-64

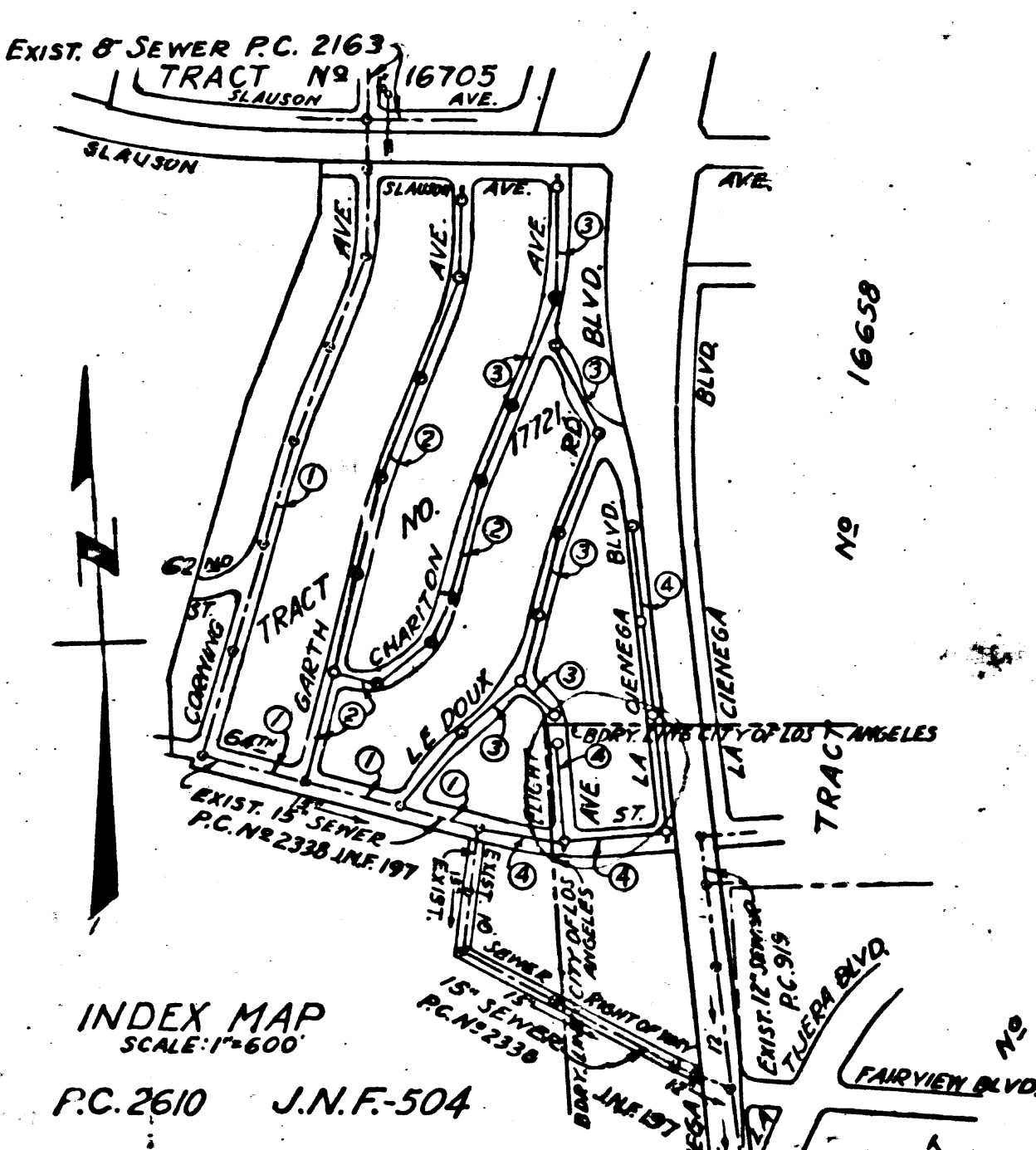
NOTE:  
GRADES TO WHICH THIS IMPROVEMENT IS TO BE CONSTRUCTED ARE SHOWN ON PLANS AND PROFILES. GRADE POINTS FOR TOP OF CURBS, CENTER LINE OF STREETS, OR CENTER LINE OF ALLEY ARE SHOWN BY CIRCLES ON PROFILES AT ALL POINTS BETWEEN DESIGNATED POINTS THE GRADE SHALL BE ESTABLISHED SO AS TO CONFORM TO A STRAIGHT LINE DRAWN BETWEEN SAID DESIGNATED POINTS. ELEVATIONS ARE IN FEET ABOVE L.A. CITY DATUM, ADD 3.75' TO OBTAIN U.S. 3 DATUM.  
THIS DRAWING AND THE DATA HEREON ARE HEREBY MADE A PART OF THE SPECIFICATIONS WORK SHALL BE CONSTRUCTED ACCORDING TO SPECIFICATIONS ON FILE IN THE OFFICE OF THE COUNTY ENGINEER AND SHALL BE PROSECUTED ONLY IN THE PRESENCE OF THE COUNTY ENGINEER. BEFORE WORK CAN BE STARTED THE CONTRACTOR MUST OBTAIN A PERMIT TO EXCAVATE IN COUNTY STREETS FROM THE L.A. COUNTY ROAD DEPT., 100 W. 2ND ST. AND MAKE A DEPOSIT WITH THE COUNTY ENGINEER, 733 L.A. COUNTY ENGINEERING BUILDING, SUFFICIENT TO COVER THE COST OF CONSTRUCTION INSPECTION AND RECORD PLANS.  
APPROVAL OF THIS PLAN BY THE COUNTY OF LOS ANGELES DOES NOT CONSTITUTE A REPRESENTATION AS TO THE ACCURACY OF THE LOCATION OF, OR THE EXISTENCE OR NON-EXISTENCE OF ANY UNDERGROUND UTILITY PIPE, OR STRUCTURE WITHIN THE LIMITS OF THIS PROJECT. THIS NOTE APPLIES TO ALL SHEETS.

COUNTY OF LOS ANGELES, CALIFORNIA  
APPROVED, WILLIAM J. FOX, COUNTY ENGINEER.  
APPROVED, A. M. RAWN, CHIEF ENGR. CO. SAN. DIST. NO. 5  
BY *W. J. Fox* DEPUTY COUNTY ENGINEER BY *A. M. Rawn* OFFICE ENGINEER  
CHECKED BY: *Robert E. Kuhner* 5-26-53  
OFFICE OF COUNTY ENGINEER, REG. C.E. NO. 7860

B.M. L.O. 754-339 B.M. A18-Elev. 104.17  
Ball & Washer set in load 2 ft W of N.W.  
Return of N.E. Ramp off Jouson Ave. to  
La Cienega Blvd. F.B. 200-14

B.M. - L.A. I-FB. 200 P 64 Found Boat Spike  
E. Curb La Cienega Blvd. W. Return  
Fairview Blvd. & La Cienega Blvd. E.L. 135.83

- NOTE:  
NO REPRESENTATIVE OF THE COUNTY ENGINEER WILL SURVEY OR LAY OUT ANY PORTION OF THE WORK.  
THE OWNER OR HIS AUTHORIZED REPRESENTATIVE SHALL FURNISH THE COUNTY ENGINEER WITH GRADE SHEETS AND STATIONS FOR ALL HOUSE LATERALS AND Y BRANCHES AND SHALL PROVIDE STAKES FOR THEM AT THEIR PROPER LOCATIONS WITH STATIONING PLAINLY MARKED. ANY CHANGE IN LOCATION SHALL BE REQUESTED IN WRITING BY THE OWNER OR HIS REPRESENTATIVE.  
NO REVISIONS SHALL BE MADE IN THESE PLANS WITHOUT APPROVAL OF THE COUNTY ENGINEER.
1. USE STANDARD MANHOLE FRAMES AND COVERS, 5'-0" IT
  2. USE STANDARD STRENGTH PIPE EXCEPT AS NOTED.
  3. USE CEMENT MORTAR FOR ALL VITRIFIED CLAY PIPE JOINTS.
  4. RESURFACE ALL TRENCH WITHIN PAVED AREA TO MEET L.A. COUNTY ROAD DEPT. REQUIREMENTS.
  5. ALL STRUCTURES SHALL BE BRICK SEWER STRUCTURES, 5'-0" - 10'-0", EXCEPT AS NOTED.
  6. PROVIDE STAKES ON THE PROPERTY LINES OR PROPERTY LINES PRODUCED AT RIGHT ANGLES TO THE SEWER LINE AT THE CENTER LINE OF EACH MANHOLE.
  7. CONSTRUCT TOPS OF ALL STRUCTURES IN RIGHTS OF WAY 6" ABOVE FINISHED GRADE.
  8. HOUSE LATERALS TO BE CONSTRUCTED WITH INVERT AT PROPERTY LINE (6) FEET BELOW CURB GRADE EXCEPT AS NOTED.
  9. FOR ALLOWABLE LEAKAGE TEST, USE FORMULA NO. 1, SPEC. SEC. 51.



SHEET NO	PAGES
1	1-3
2	6-10
3	11-15
4	16-18

APPROVED FOR OUTLET ONLY  
SUBMITTED April 10 1953  
BY *O. K. Henderson*  
DEPUTY ENGINEER  
APPROVED April 10 1953  
BY *William J. Fox*  
COUNTY ENGINEER

*Revised 5-5-53 W. J. Fox*

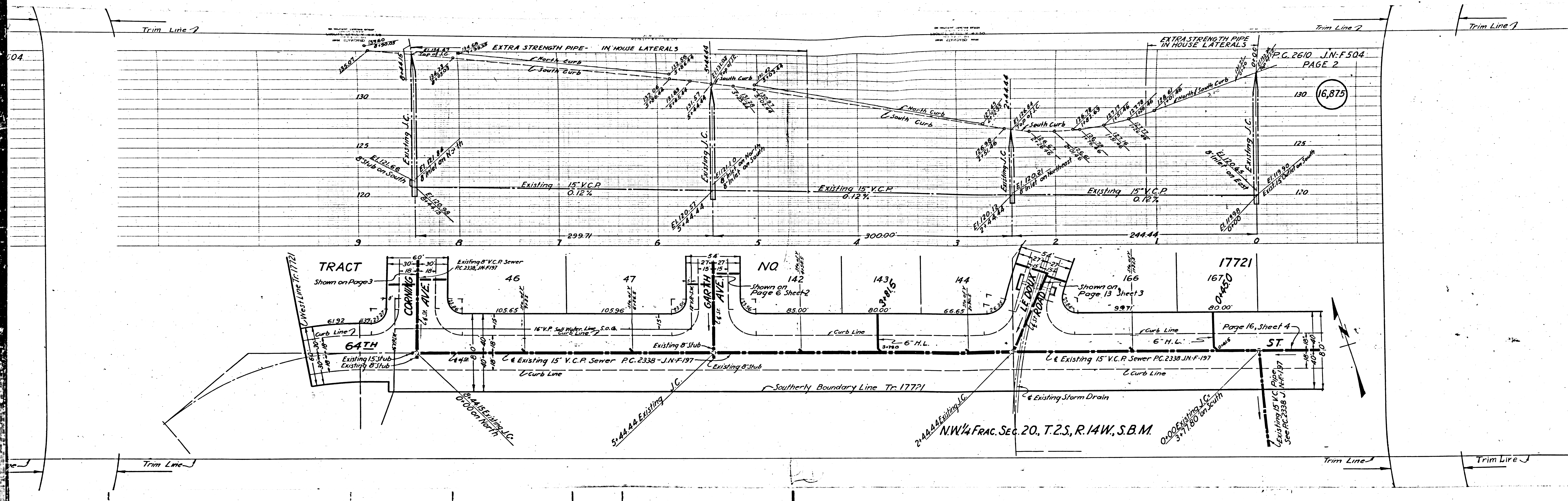
*Check in city of L.A. for this City.*

Trim Line 1

Trim Line 3

Trim Line 1





Trim Line 7

Trim Line 7

Trim Line 7

P.C. 2610 J.N-F-504  
PAGE 2

16,875

TRACT  
Shown on Page 3

NO  
Shown on Page 6 Sheet 2

17721  
Shown on Page 13 Sheet 3

166  
Shown on Page 16, Sheet 4

64TH  
Existing 15" Stub  
Existing 8" Stub

CORNING AVE.

GARTH AVE.

LE DUNE RD.

ST.

Existing 8" V.C.P. Sewer P.C. 2338 J.N-F-197

Existing 8" Stub

Existing 8" Stub

Existing 8" Stub

Southerly Boundary Line Tr. 17721

Existing 15" V.C.P. Sewer P.C. 2338 J.N-F-197

Existing Storm Drain

2.44.44.44 Existing J.C.

N.W. 1/4 FRAC. SEC. 20, T.2.S, R.14W, S.B.M.

Existing 15" V.C. Pipe

See P.C. 2338 J.N-F-197

Trim Line

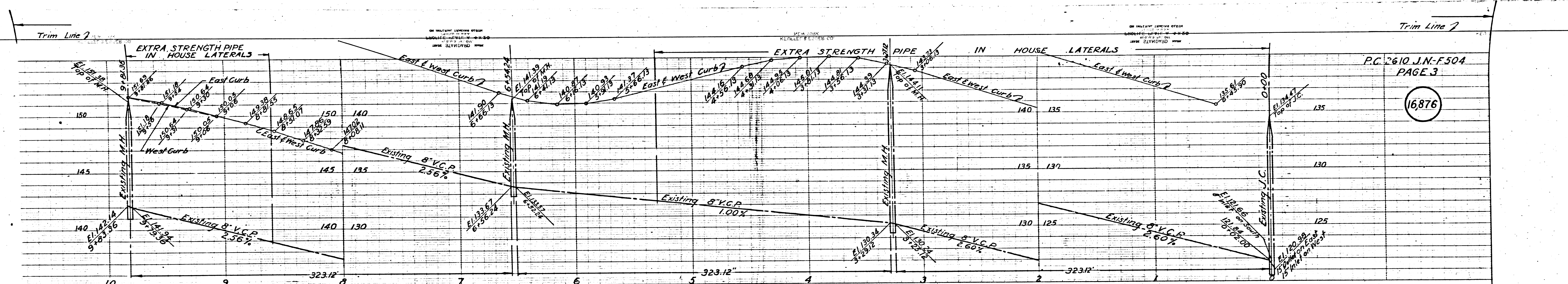
Trim Line

Trim Line



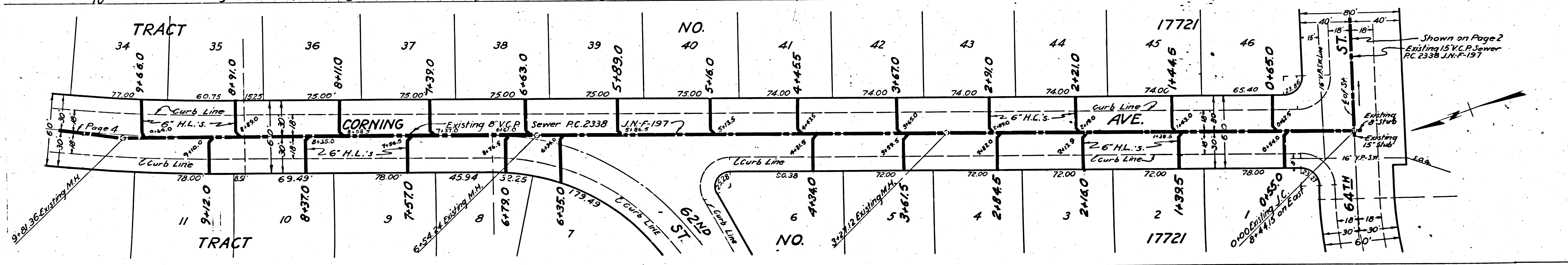
J.N.-F.504  
AGE 4

16877



P.C. 2610 J.N.-F.504  
PAGE 3

16876

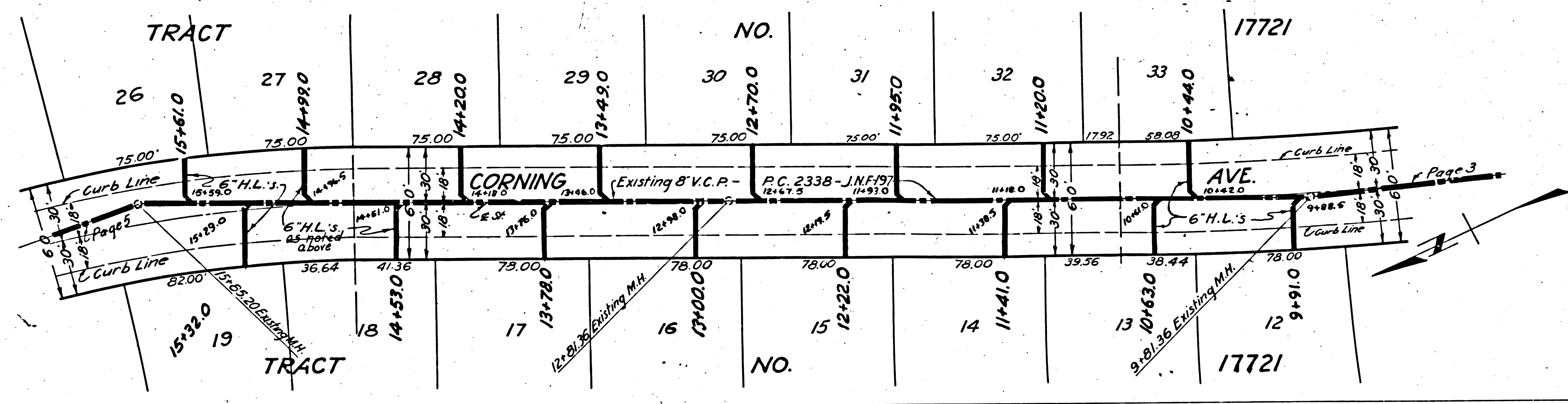
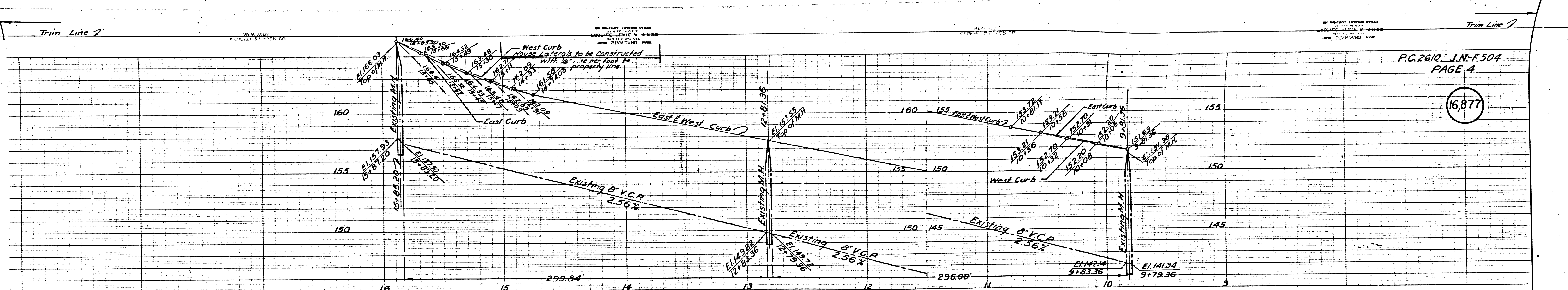


Shown on Page 2  
Existing 8" V.C.P. Sewer  
P.C. 2338 J.N.-F.137

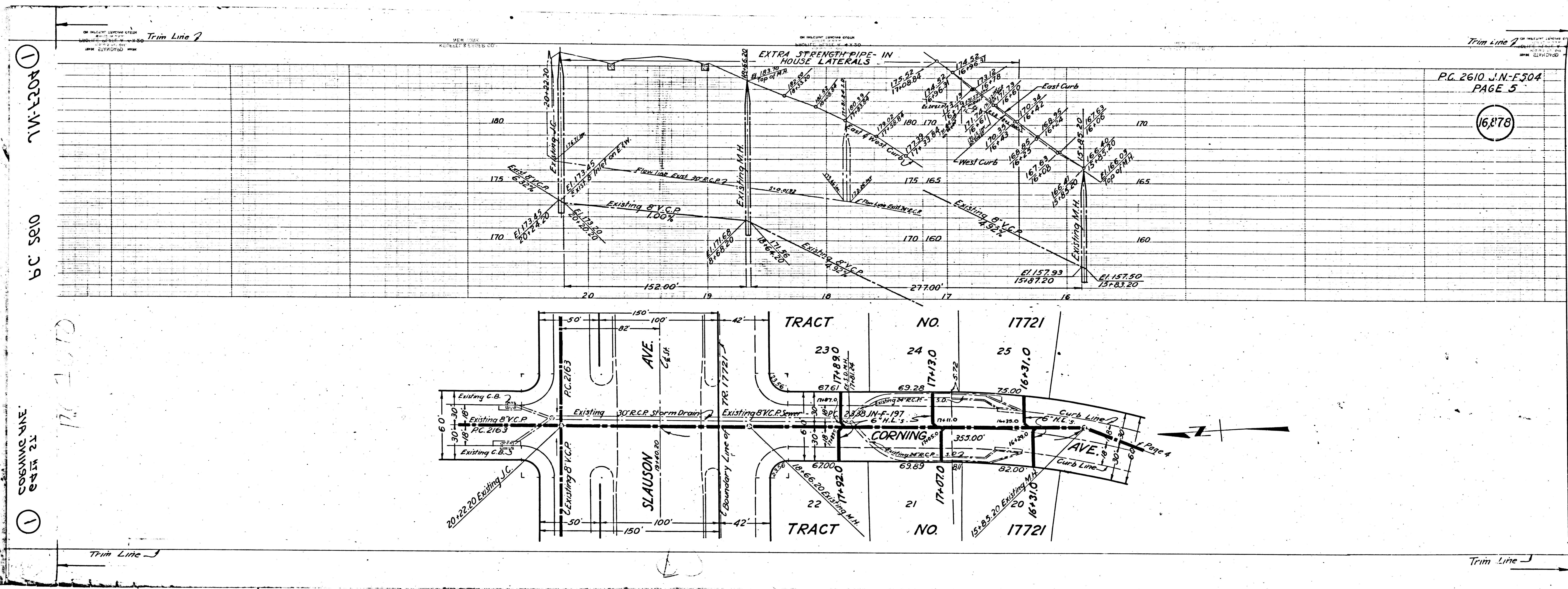


16,878

16,877





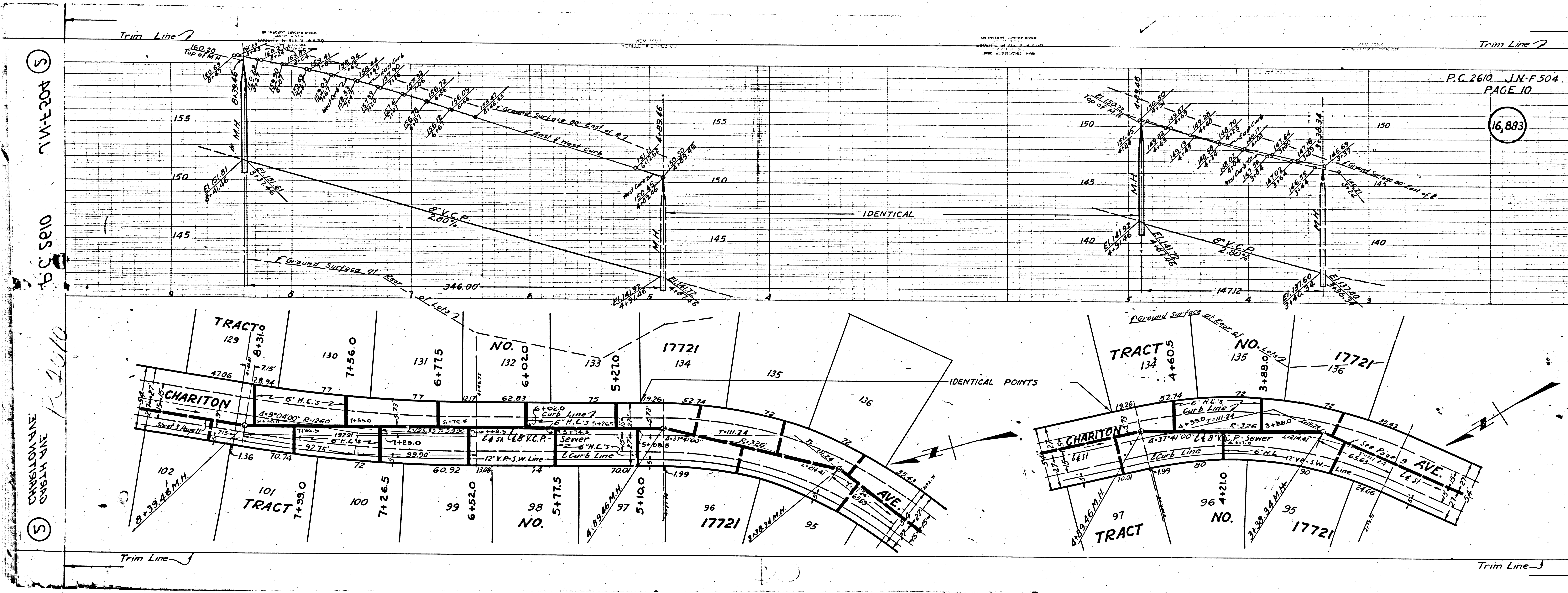


① 7W-E304  
 ① 6C-S80  
 ① CORNING AVE  
 ① 64E-23  
 ① 6C-S80

16,878

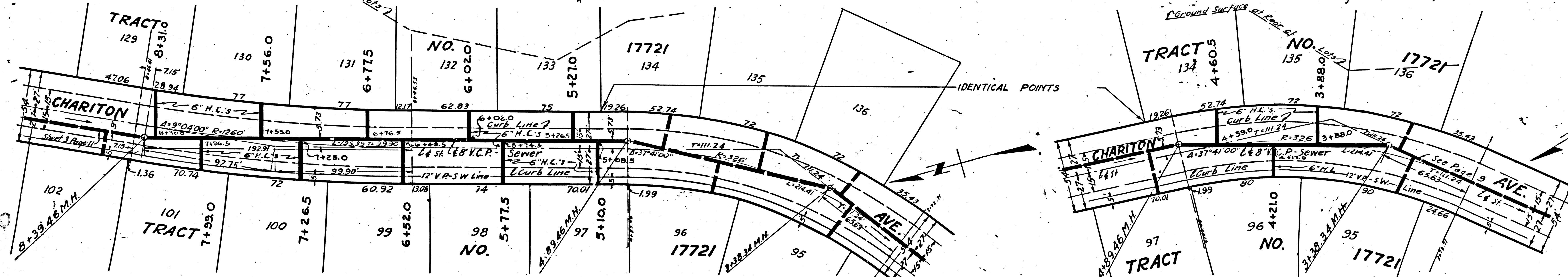
Page 4





5  
207-1-1-1  
5  
018  
5  
2-1-1

5  
CASH AVE  
5  
R 210

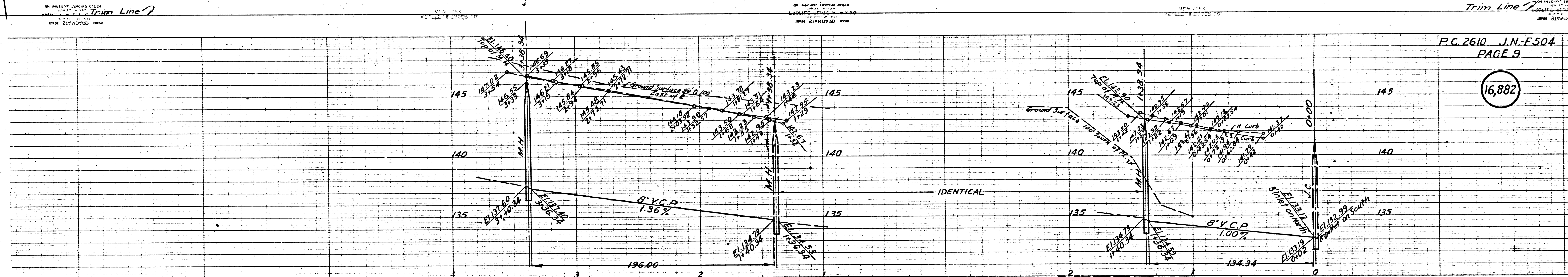




Trim Line

2610 J.N-F 504  
PAGE 10

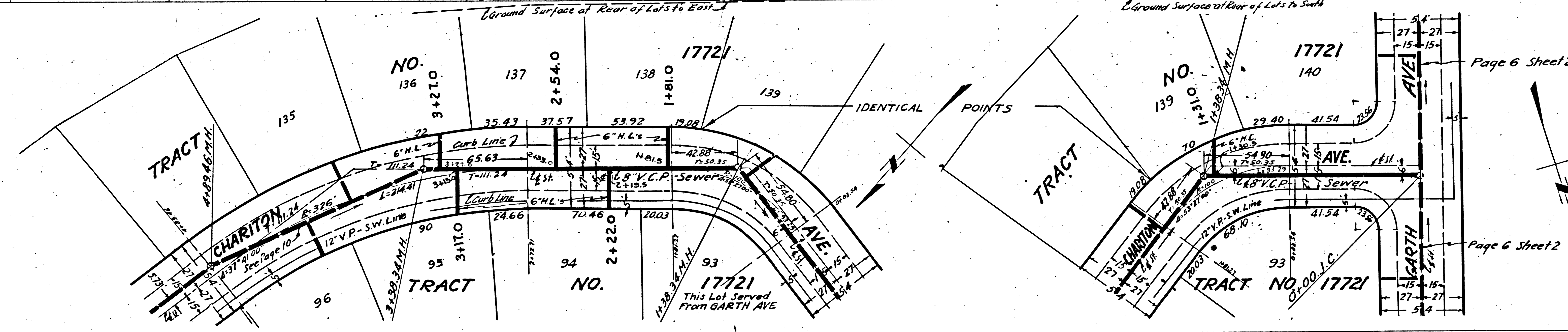
16,883



P.C. 2610 J.N-F 504  
PAGE 9

16,882

Trim Line



Page 6 Sheet 2

Page 6 Sheet 2

Trim Line

Trim Line

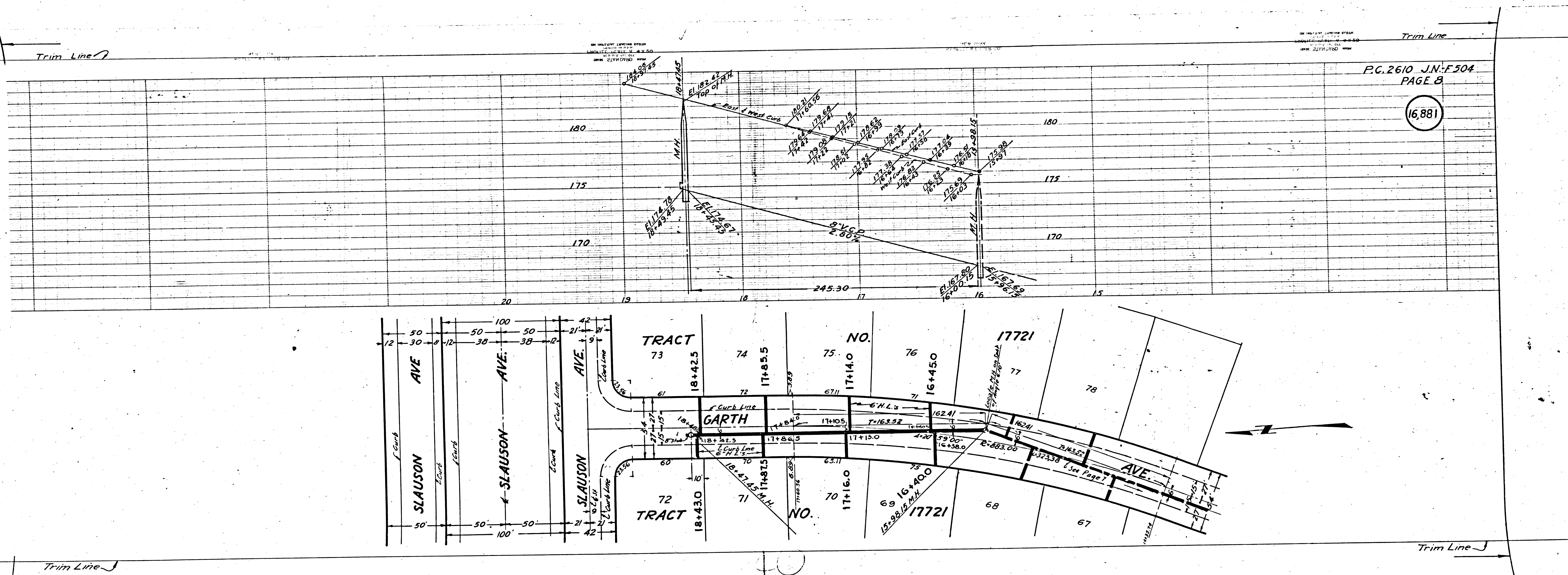


J.N-F-504  
PAGE 9

16,882

P.C. 2610 J.N-F-504  
PAGE 8

16,881





304

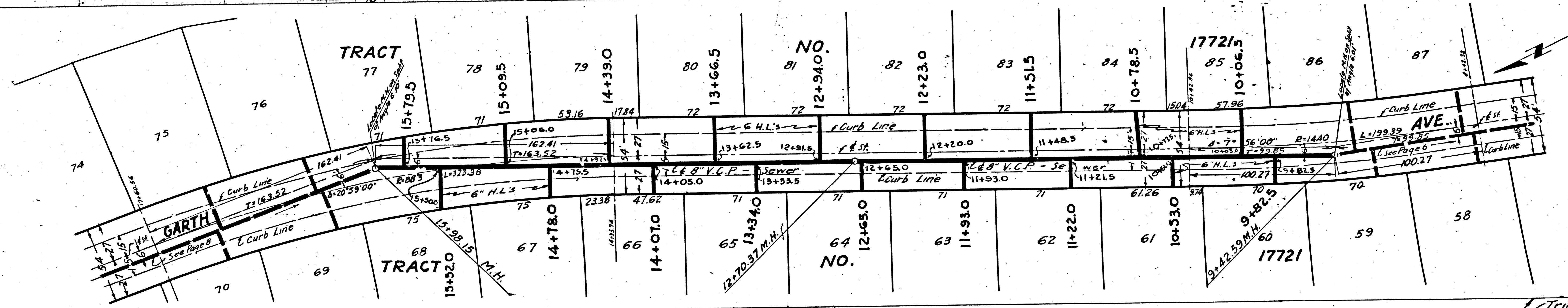
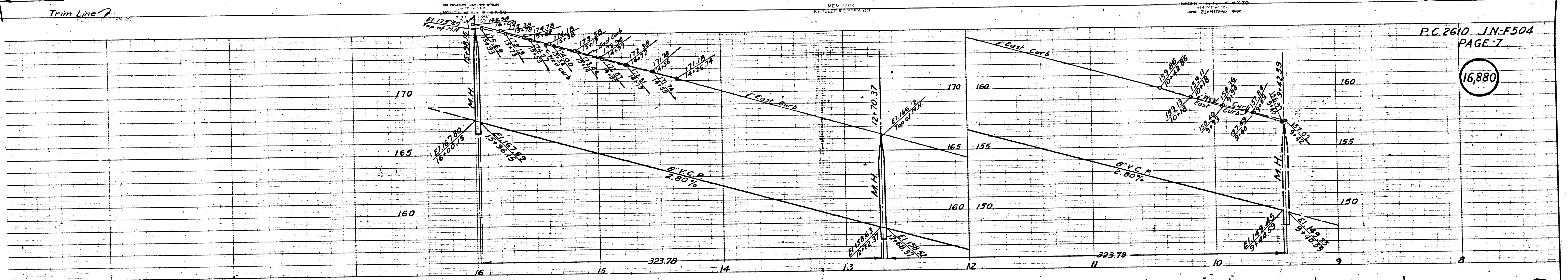
Trim Line

Trim Line

Trim Line

P.C. 2610 J.N-F504  
PAGE 7

16,880



Trim Line

Trim Line

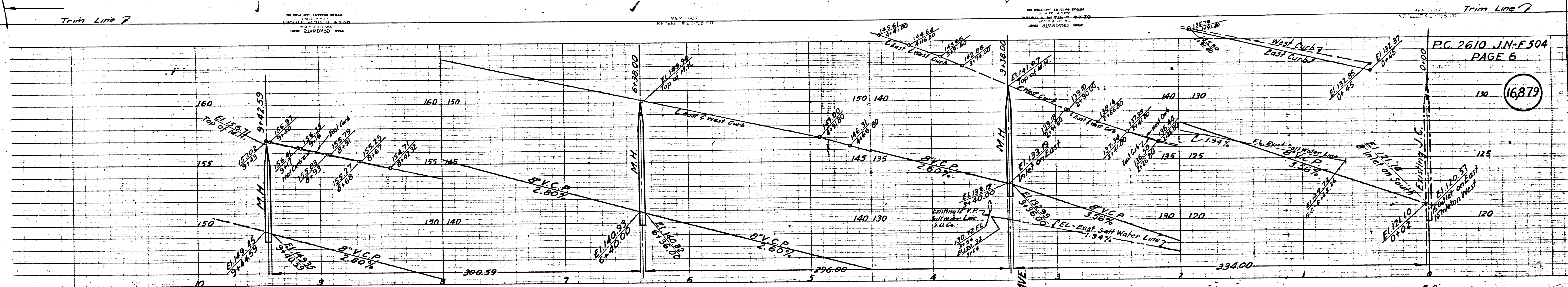
Trim Line



504

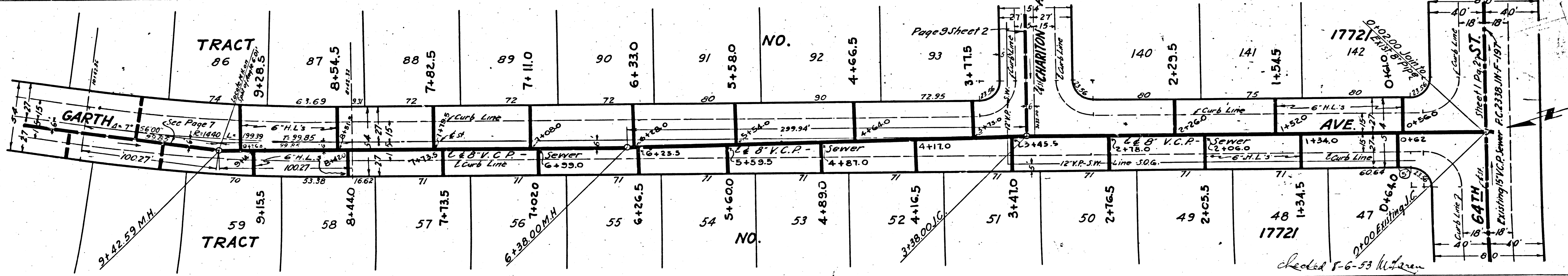
Trim Line 7

Trim Line 7



PG. 2610 J.N-F 504  
PAGE 6

16,879



Trim Line 7

Trim Line 7

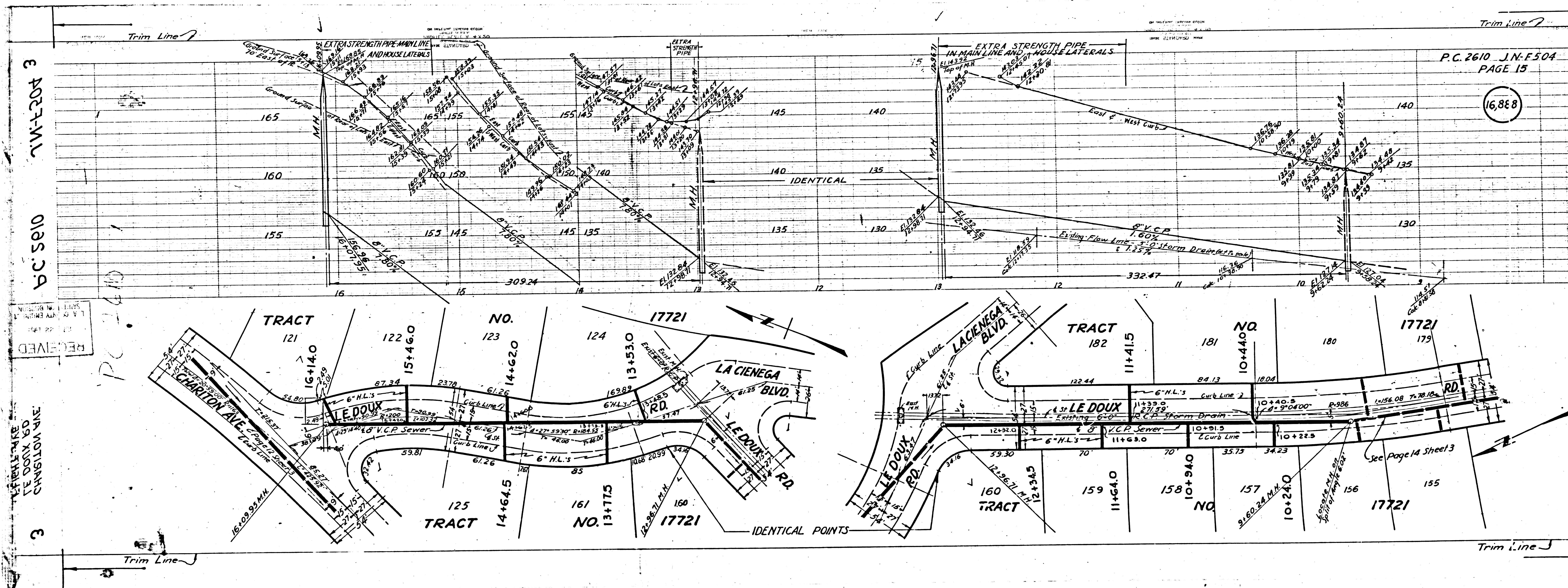
RECEIVED

5  
CASH AVE.  
CHARLTON AVE.

5  
17721  
64TH ST.

checked 5-6-53 W. H. W.





PC 2610 JN-F504  
 PAGE 15  
 16,888

RECEIVED

3  
 16,009.92 MM  
 3  
 3  
 3

PC 2610 JN-F504  
PAGE 15

16,888

See Page 14 Sheet 3



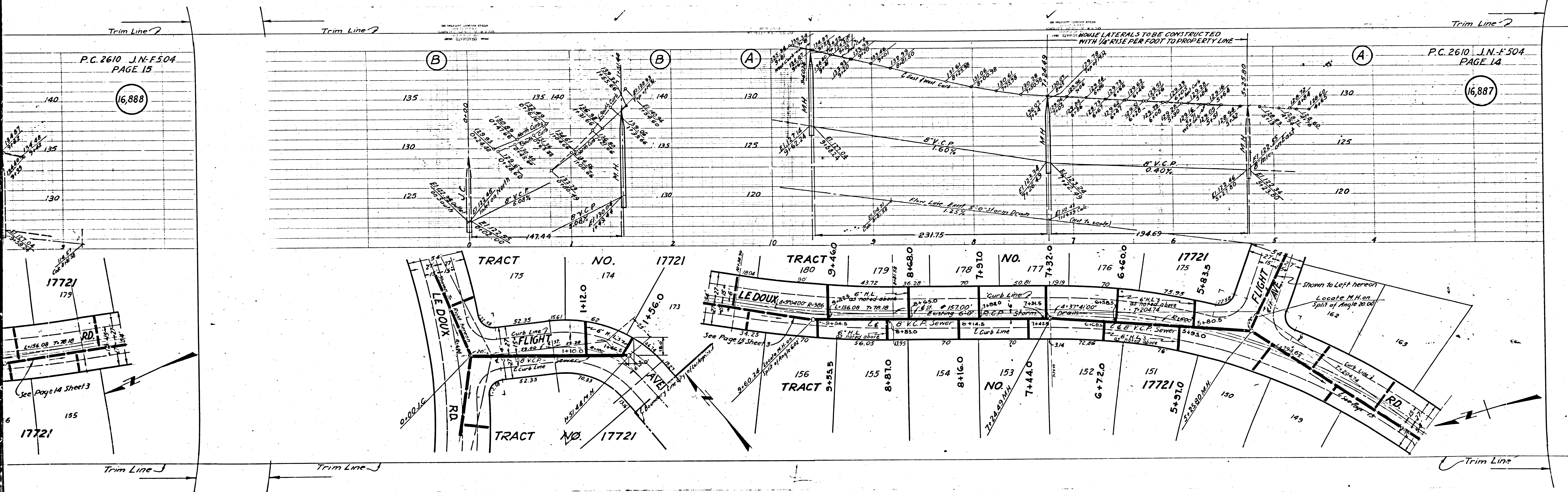
Trim Line 2

Trim Line 2

Trim Line 2

16,888

16,887



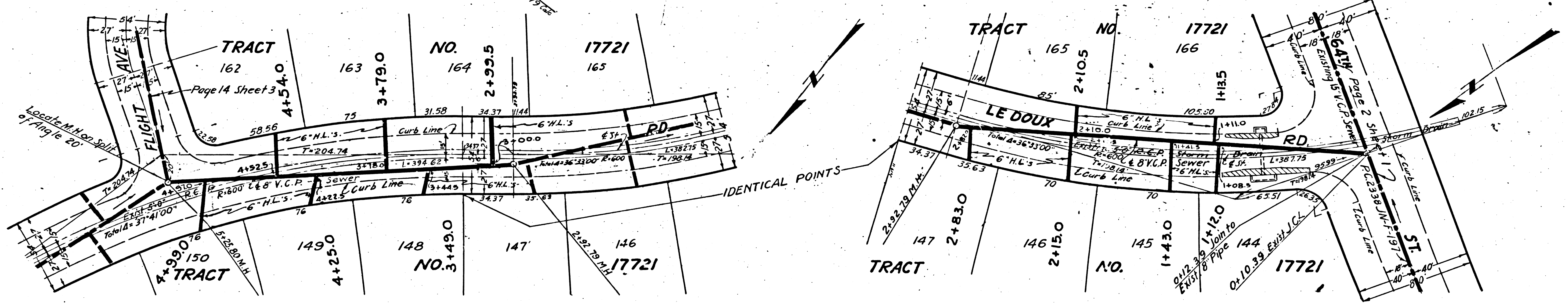
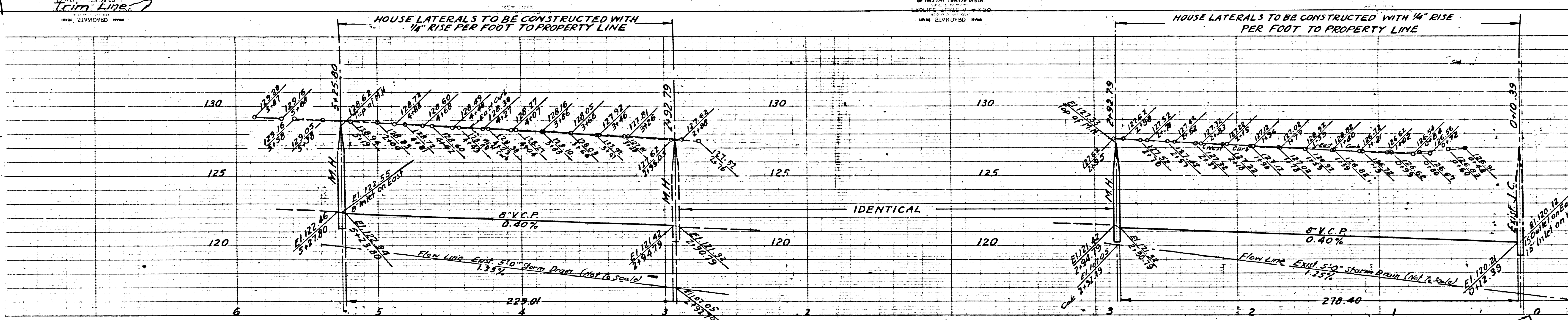


P.C. 2610 J.N.-F.504  
PAGE 14

16,887

P.C. 2610 J.N.-F.504  
PAGE 13

16,886



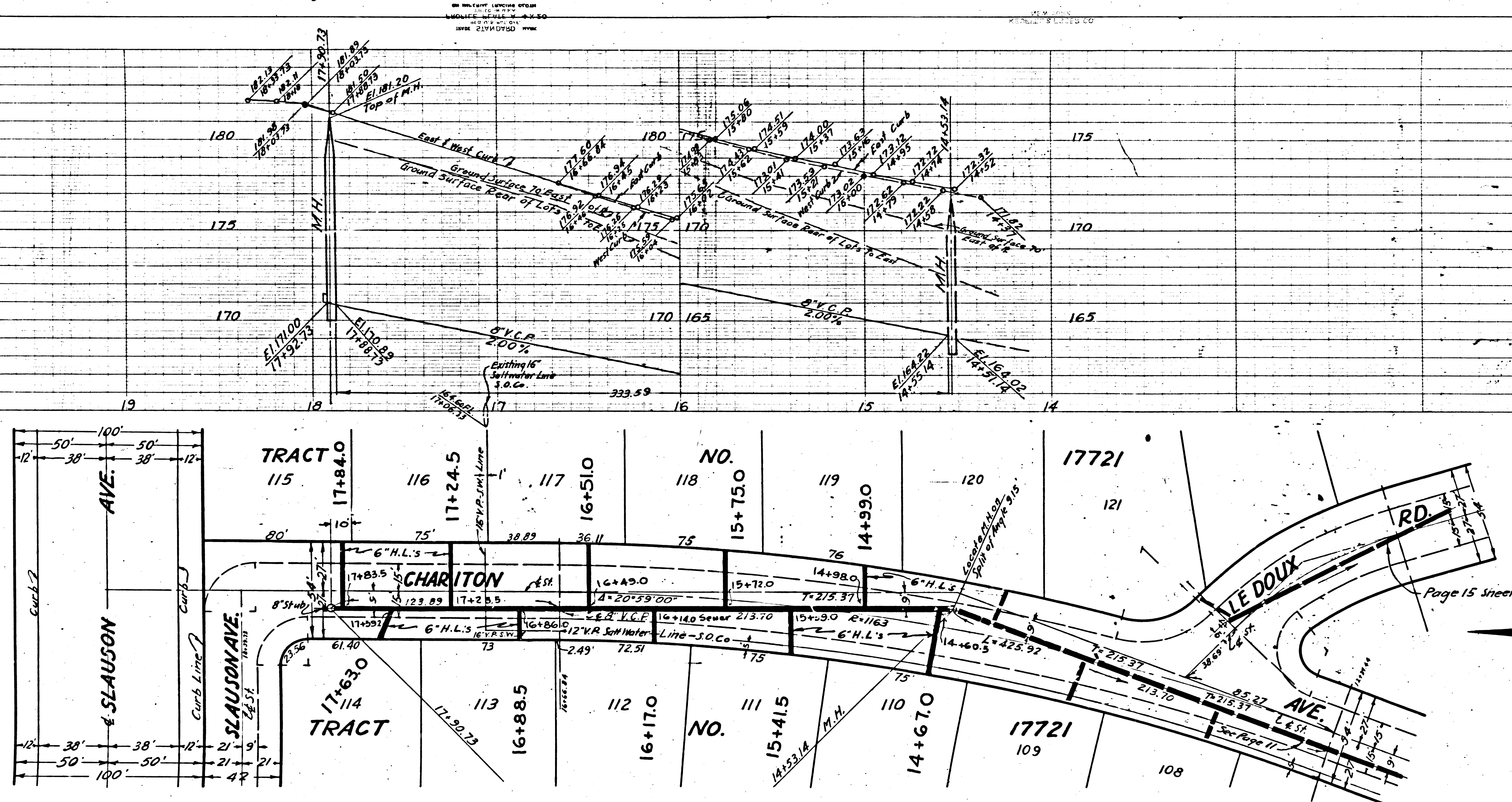


J.N.-F504  
EE 13

886

P.C. 2610 J.N.-F504  
PAGE 12

16,885





Trim Line

Trim Line

P.C. 2610 J.N.-F.504  
PAGE II

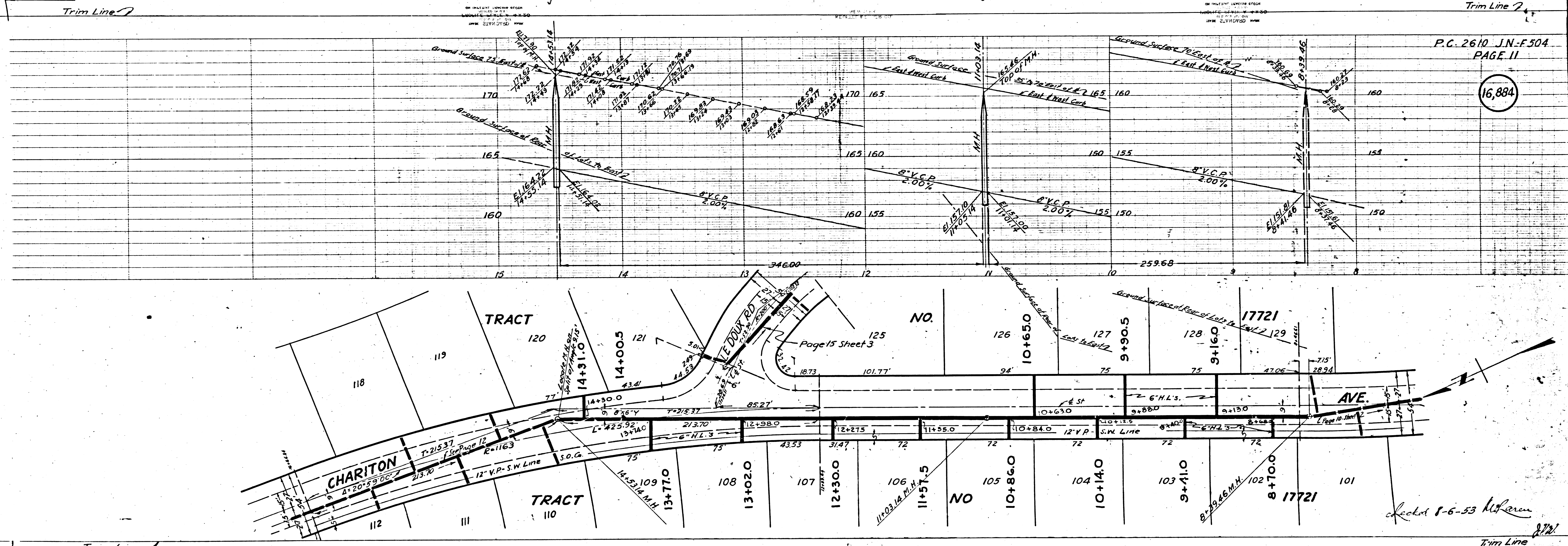
16,884

3  
RIGHT WAY  
CEDAR SD  
CHARITON AVE

RECEIVED  
JUN 28 1953

16,884  
B.C. SIO

T.W. F204 3



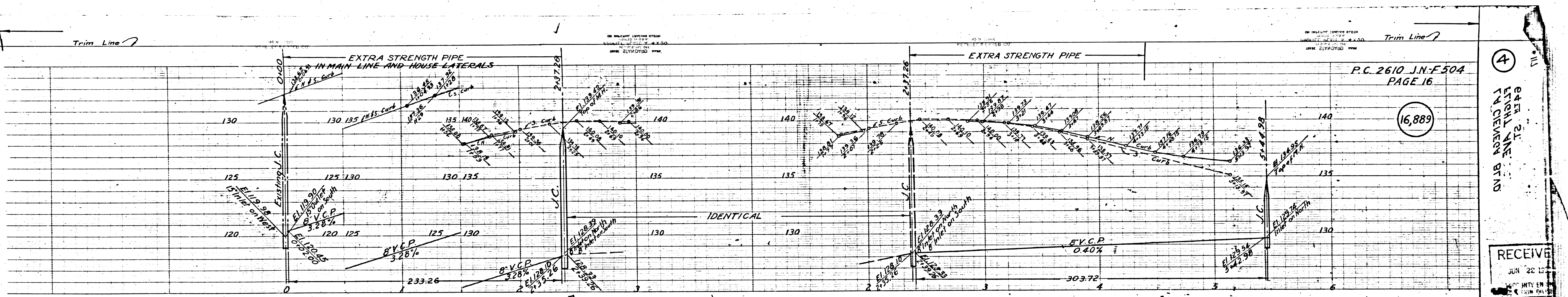
Checked 8-6-53 *Kifer*

Trim Line



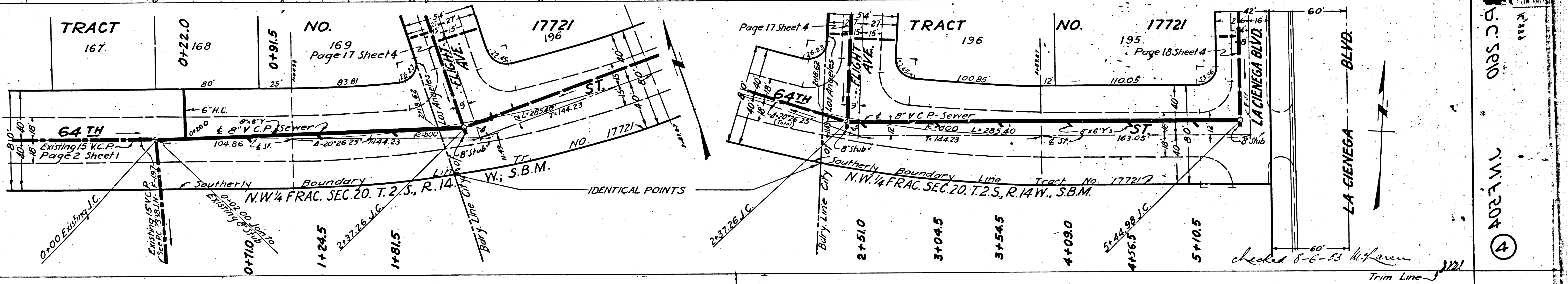
Trim Line

Trim Line



P.C. 2610 J.N.F. 504  
PAGE 16

16,889



4

64th ST  
LA CIENEGA BLVD

RECEIVED  
JUN 22 1971

16889

P.C. 2610  
J.N.F. 504

4

checked 8-6-55 M. J. Green

Trim Line



F 504

Trim Line

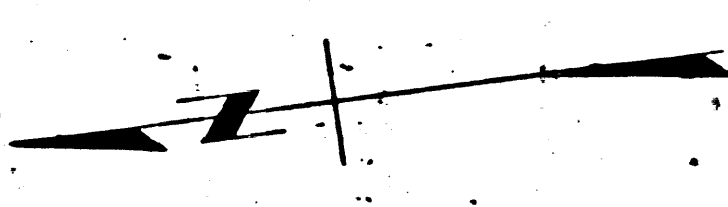
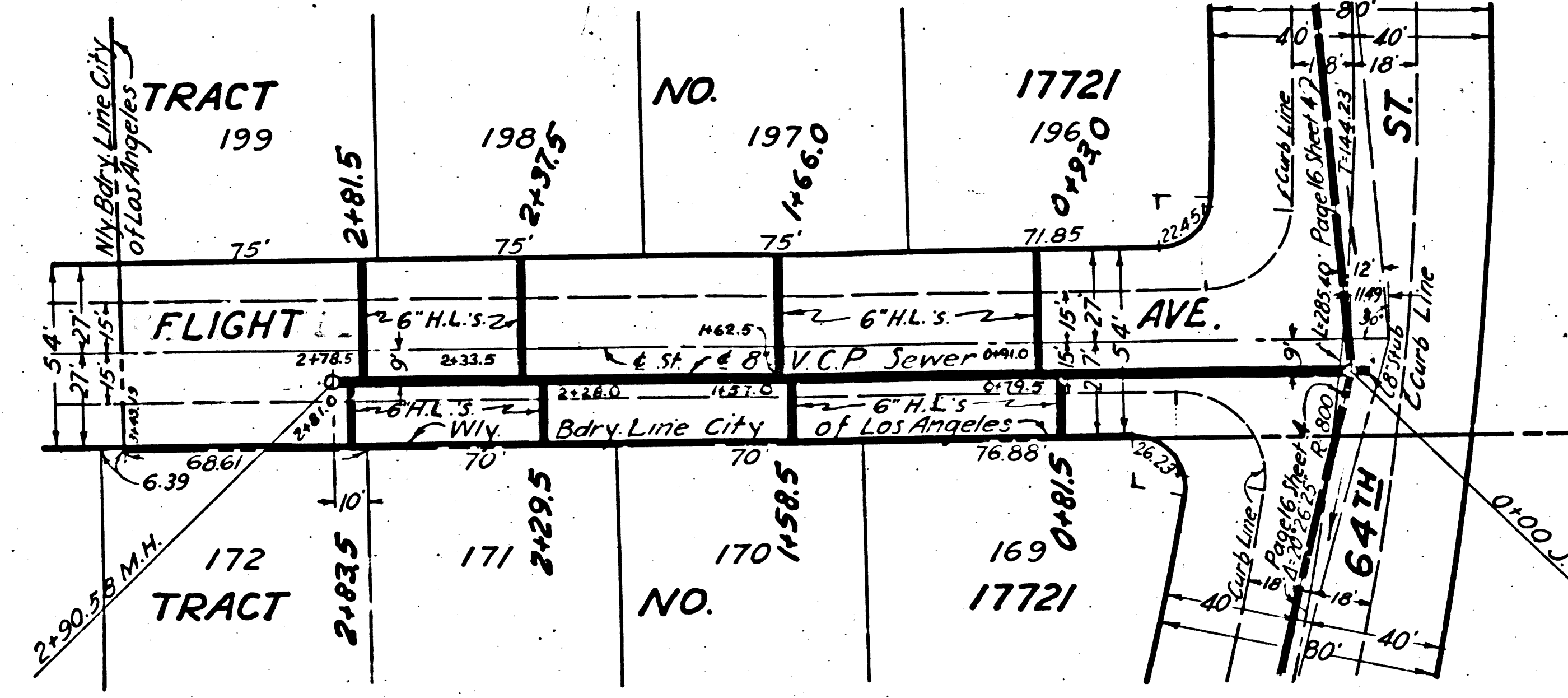
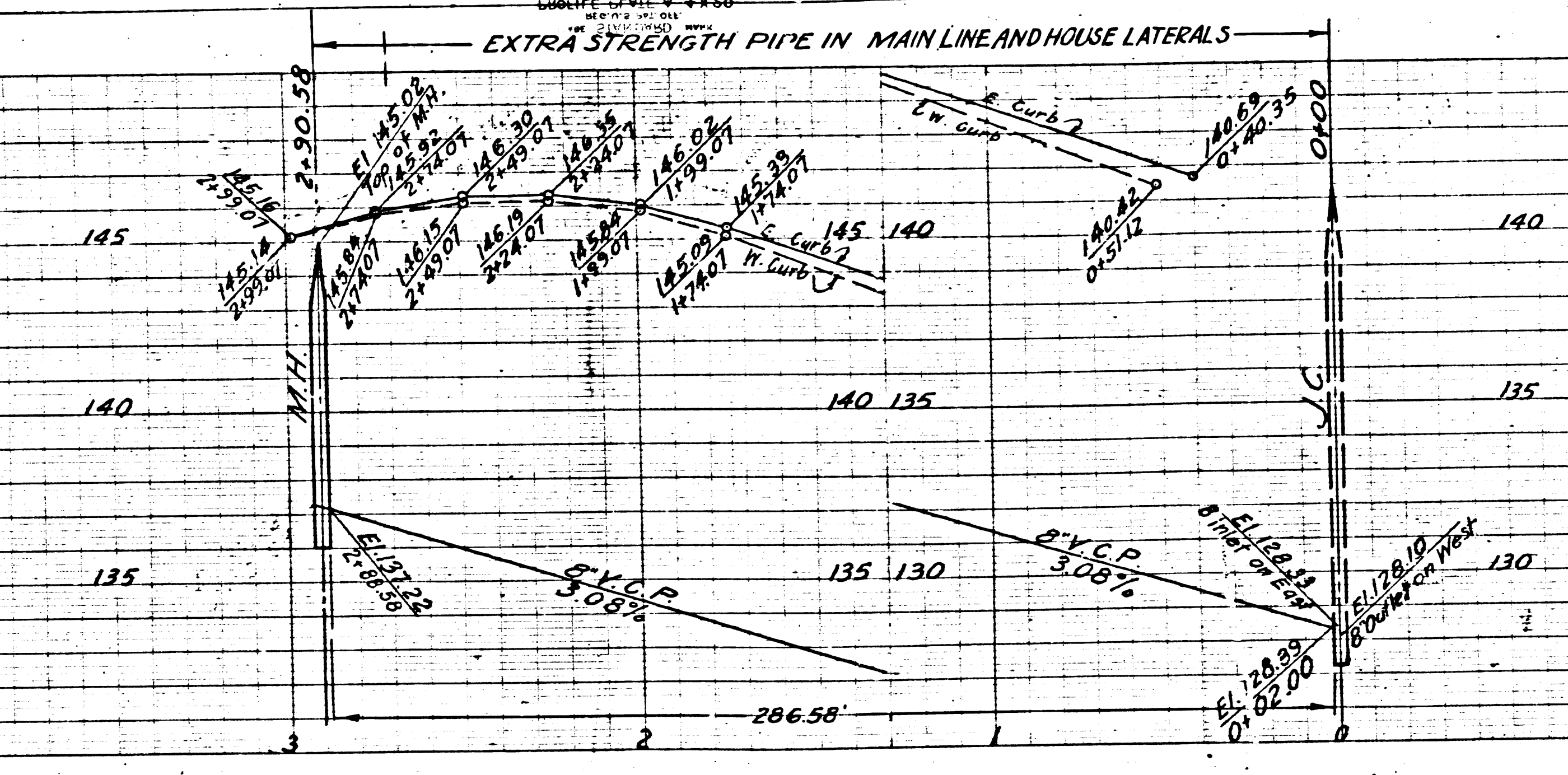
Trim Line

Trim Line

EXTRA STRENGTH PIPE IN MAIN LINE AND HOUSE LATERALS

P.C. 2610 J.N-F 504  
PAGE 17

16,890



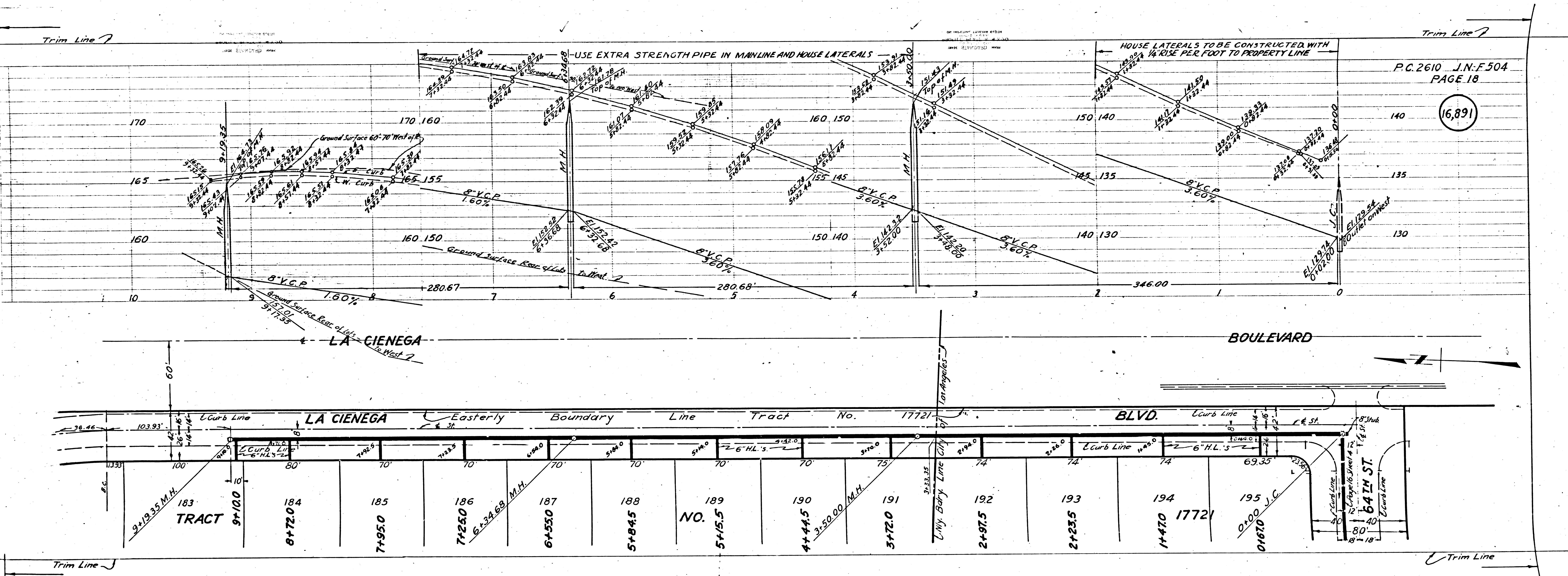
Trim Line

Trim Line

Trim Line



171-204  
 BC 5E10  
 16891



P.C. 2610 J.N.F. 504  
PAGE 18

16891

BOULEVARD

LA CIENEGA

LA CIENEGA

Easterly Boundary Line Tract No. 17721

BLVD.

BATH ST.

NO.

TRACT

183

184

185

186

187

188

189

190

191

192

193

194

195

Trim Line

Trim Line