

ENCL. N. 509

PAGE 2

(A)

17,081

200

195

190

185

180

175

170

165

160

155

150

145

140

135

130

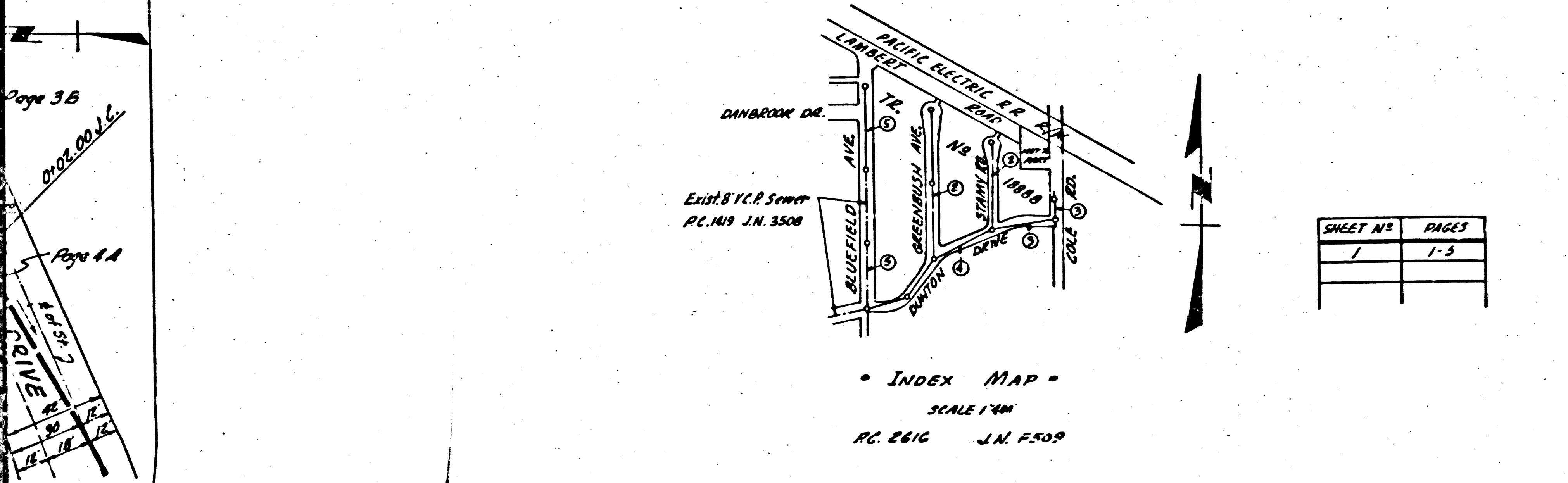
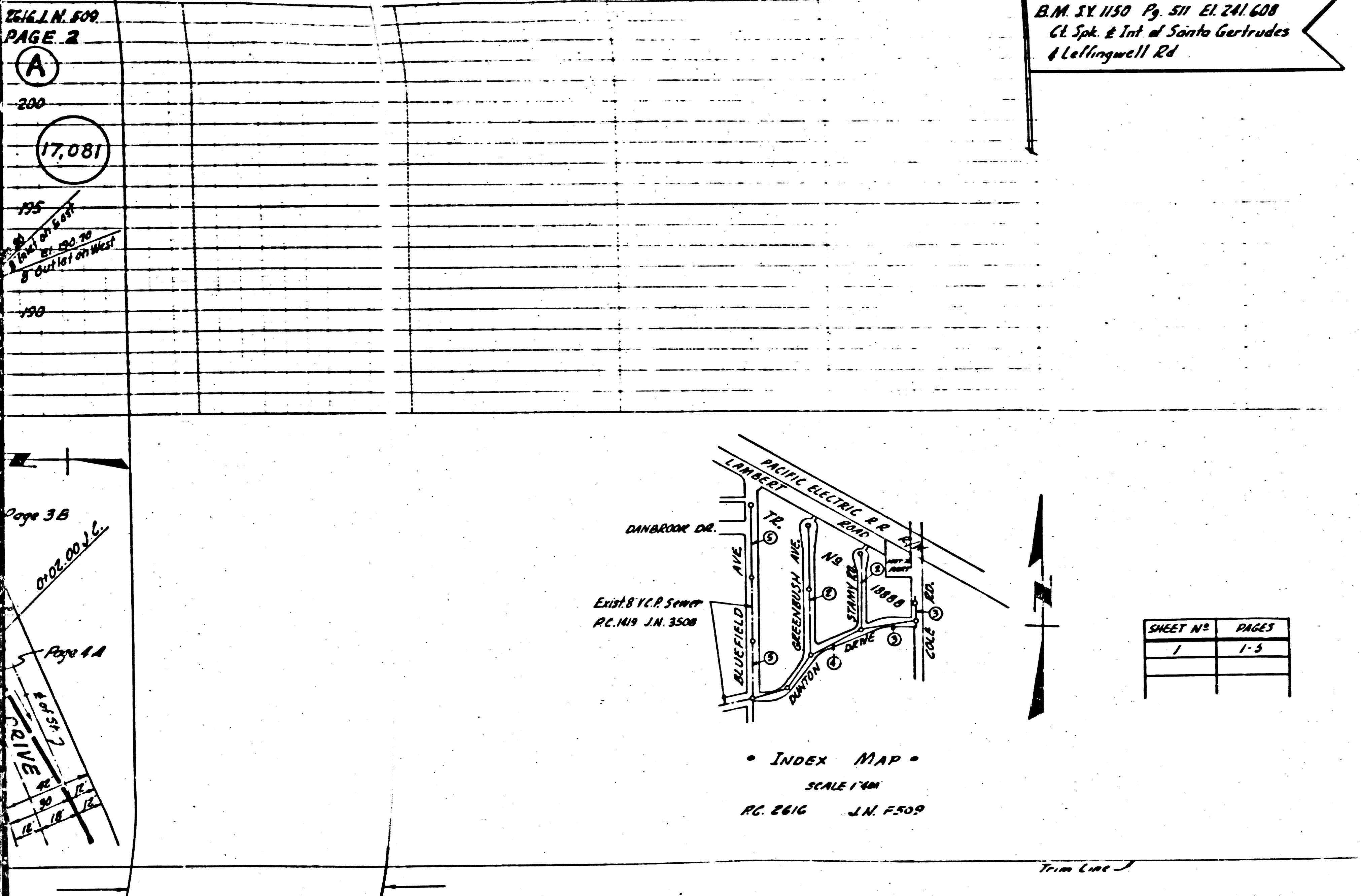
125

120

115

110

105



SHEET NO.	PAGES
1	1-3

BLDG. DIST. 11 WHITTIER

- USE STANDARD STRENGTH PIPE EXCEPT AS NOTED.
- USE CEMENT MORTAR FOR ALL WITHEDED CLAY PIPE JOINTS.
- EMCASE FOUR FEET OF SEWER AT POINTS OF INTERFERENCE WITH POLES AS PER S-4113.
- CONSTRUCT HOUSE LATERALS WITH INVERTS AT PROP. LINE 1'-6" FEET BELOW CURB GRADE EXCEPT AS NOTED.
- ALL STRUCTURES SHALL BE BRICK SEWER STRUCTURES AS PER PLAN NO. S-6-104 EXCEPT AS NOTED.
- USE STANDARD MANHOLE FRAMES AND COVERS AS PER PLAN NO. S-6-117 EXCEPT AS NOTED.
- CONSTRUCT TOPS OF ALL STRUCTURES IN RIGHTS OF WAY 6" ABOVE FINISHED GRADE.
- RESURFACE ALL TRENCHES WITHIN PAVED AREA TO MEET LOS ANGELES COUNTY ROAD DEPT. OR STATE HIGHWAY REQUIREMENTS IN ACCORDANCE WITH PERMIT.
- PROVIDE STAKES ON THE PROPERTY LINES OR PROPERTY LINES PRODUCED, AT RIGHT ANGLES TO THE SEWER LINE AT THE CENTER LINE OF EACH MANHOLE.
- NO REVISIONS SHALL BE MADE IN THESE PLANS WITHOUT APPROVAL OF THE COUNTY ENGINEER OR REPRESENTATIVE OF THE COUNTY ENGINEER WILL SURVEY OR LAY OUT ANY PORTION OF THE WORK.
- THE OWNER OR HIS AUTHORIZED REPRESENTATIVE SHALL FURNISH THE COUNTY ENGINEER WITH GRADE SHEETS AND STATIONS OF ALL HOUSE LATERALS AND T BRANCHES AND SHALL PROVIDE STAKES FOR THEM AT THEIR PROPER LOCATIONS WITH STATIONING PLAINLY MARKED. ANY CHANGE OF LOCATION SHALL BE REQUESTED IN WRITING BY THE OWNER OR HIS REPRESENTATIVE.

FOR ALLOWABLE LEAKAGE TEST, USE FORMULA NO. 1, SPEC'S SEC. 51

APPROVAL OF THIS PLAN BY THE COUNTY OF LOS ANGELES DOES NOT CONSTITUTE A REPRESENTATION AS TO THE ACCURACY OF THE LOCATION OF, OR THE EXISTENCE OR NON-EXISTENCE OF, ANY UNDERGROUND UTILITY, PIPE OR STRUCTURE WITHIN THE LIMITS OF THIS PROJECT. (THIS NOTE APPLIES TO ALL SHEETS)

PC. 2616 F.509
PAGE 1.

PROFILE ALIGNMENT AND GRADE OF
SANITARY SEWERS
TO BE CONSTRUCTED IN

TRACT NO 18888

PRIVATE CONTRACT NO. 2616
W. S. 31
SHEET 1 OF 1 SHEETS
SCALE: VERT. 1"=4'
HORIZ. 1"=40'
MARCH 1953

PREPARED IN THE OFFICES OF
KEMMERER ENG. CO., INC.
BY: *Wm. C. Thomson*
M.E.C.E. NO. 2743

FOR LEGEND
SEE PLAN NO. S-6-54

NOTE: GRADES TO WHICH THIS IMPROVEMENT IS TO BE CONSTRUCTED ARE SHOWN ON PLANS AND PROFILES. GRADE POINTS FOR TOP OF CURB, CENTER LINE OF STREET OR CENTER LINE OF ALLEY ARE SHOWN BY INCHES ON PROFILES AT ALL POINTS BETWEEN DESIGNATED POINTS. THE GRADE SHALL BE ESTABLISHED SO AS TO CONFORM TO A STRAIGHT LINE DRAWN BETWEEN SAID DESIGNATED POINTS. ELEVATIONS ARE IN FEET ABOVE U.S.G. & DATUM OR MEAN SEA LEVEL.

THIS DRAWING AND THE DATA HEREON ARE HEREBY MADE A PART OF THE SPECIFICATIONS. WORK SHALL BE CONSTRUCTED ACCORDING TO SPECIFICATIONS ON FILE IN THE OFFICE OF THE COUNTY ENGINEER AND SHALL BE PROSECUTED ONLY IN THE PRESENCE OF THE COUNTY ENGINEER. BEFORE WORK CAN BE STARTED, THE CONTRACTOR MUST OBTAIN A PERMIT TO EXCAVATE IN THE COUNTY ENGINEER'S OFFICE FROM THE L.A. COUNTY ROAD DEPT. JOB NO. 1-10-53 AND MAKE A DEPOSIT WITH THE COUNTY ENGINEER TWENTY AT JOB END STAKES, SUFFICIENT TO COVER THE COST OF CONSTRUCTION INSPECTION AND RECORD PLANS. A PERMIT MUST BE OBTAINED FROM THE STATE OF CALIFORNIA, DIVISION OF HIGHWAYS, 180 S. SPRING ST.

COUNTY OF LOS ANGELES, CALIFORNIA

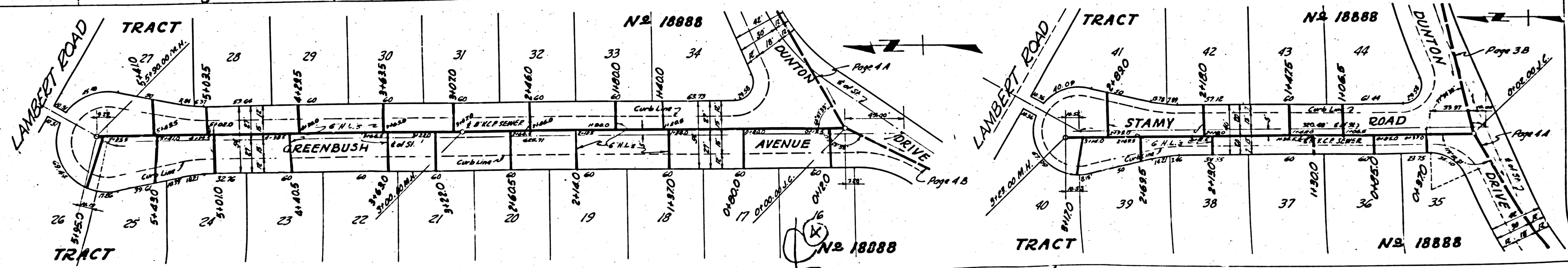
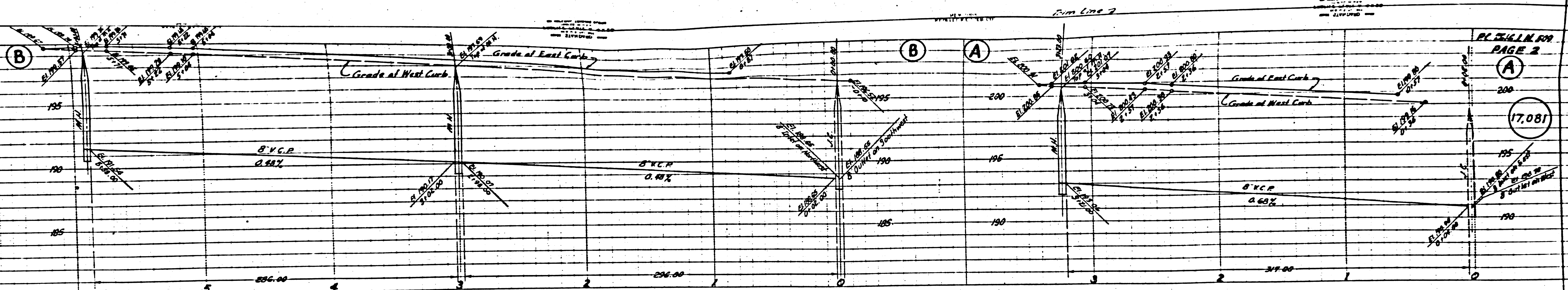
WILLIAM J. FOX, County Engineer
APPROVED BY: *William J. Fox*
OFFICE ENGINEER

APPROVED BY: *Wm. C. Thomson*
CHECKED BY: *Wm. C. Thomson*
SANITATION DISTRICT NO. 11

CHECKED BY: *Richard E. Kuhn*
OFFICE OF COUNTY ENGINEER, SEE S.E. 10 1/2 1/2

17,081

RECEIVED
MAR 31 1953
L.A. COUNTY ENGINEER
SANITATION DIVISION



PL. 1888 L.M. 1899
 PAGE 2

(17,081)

Page 3 B

Page 4 A

Trim Line A

L.N. E509
E 4

17083

(B)

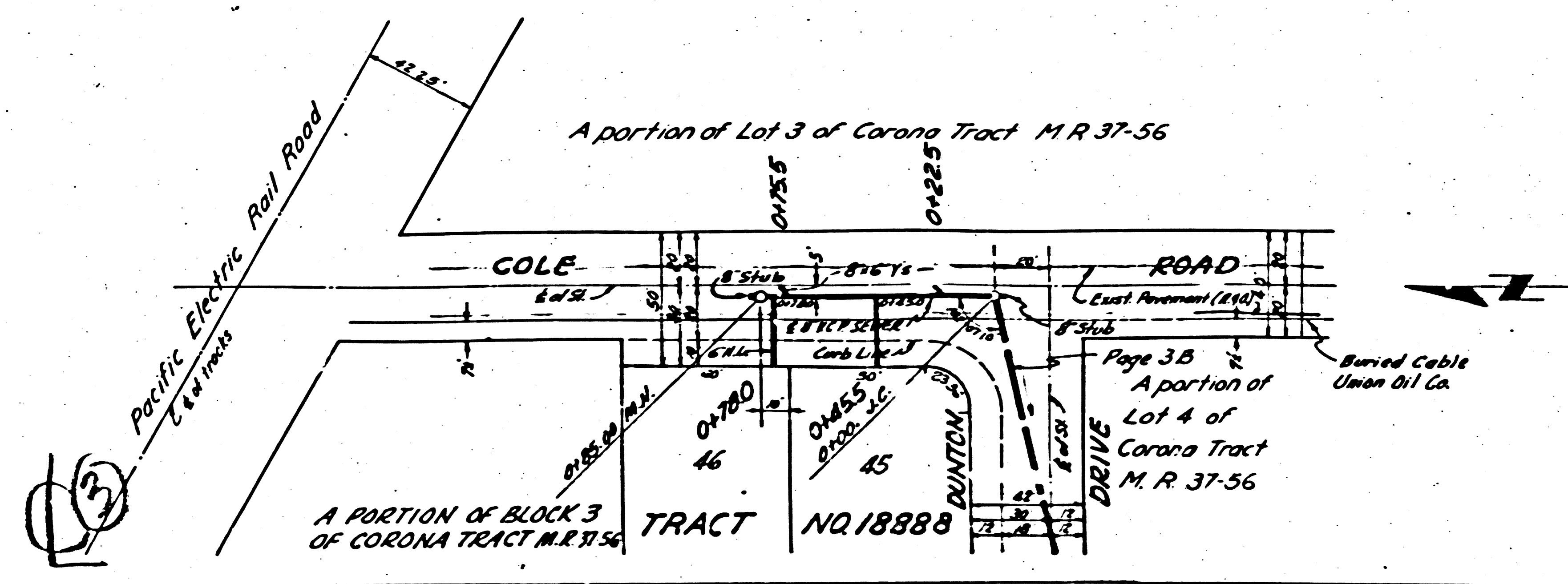
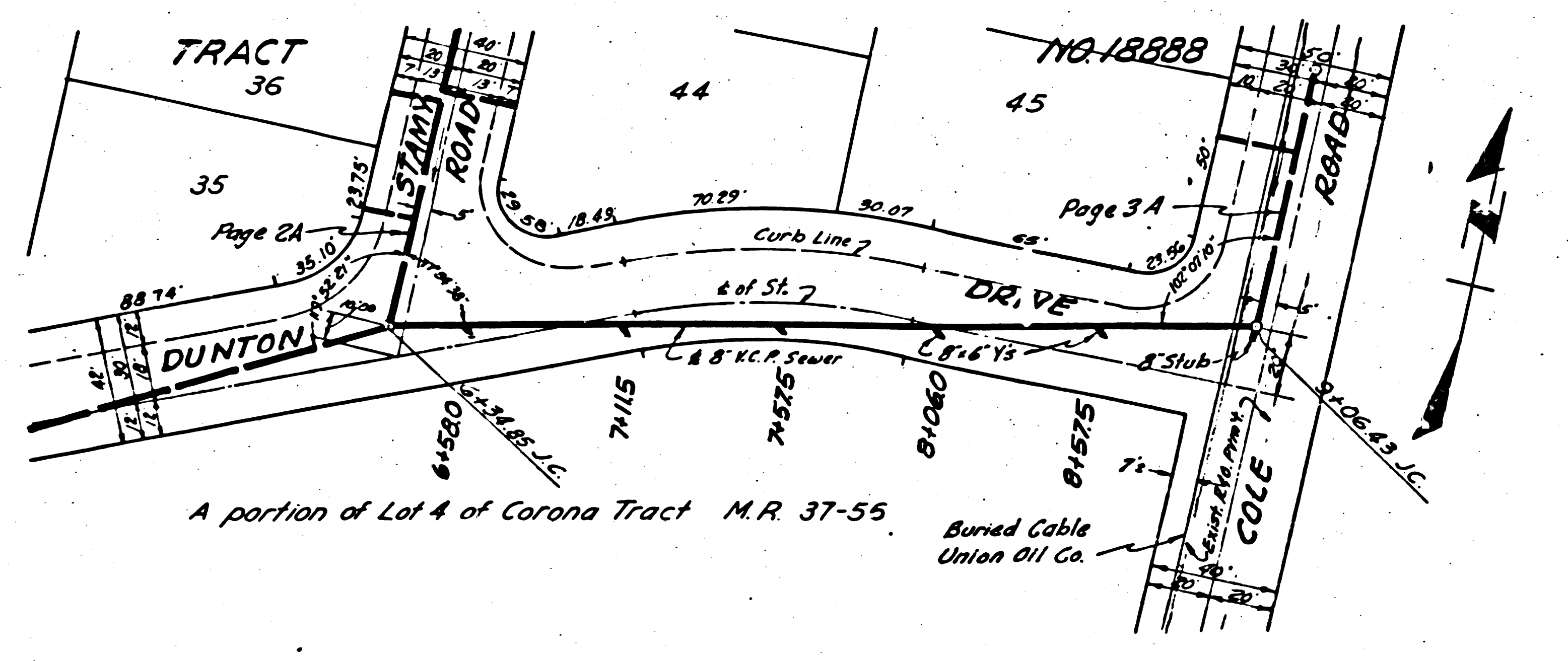
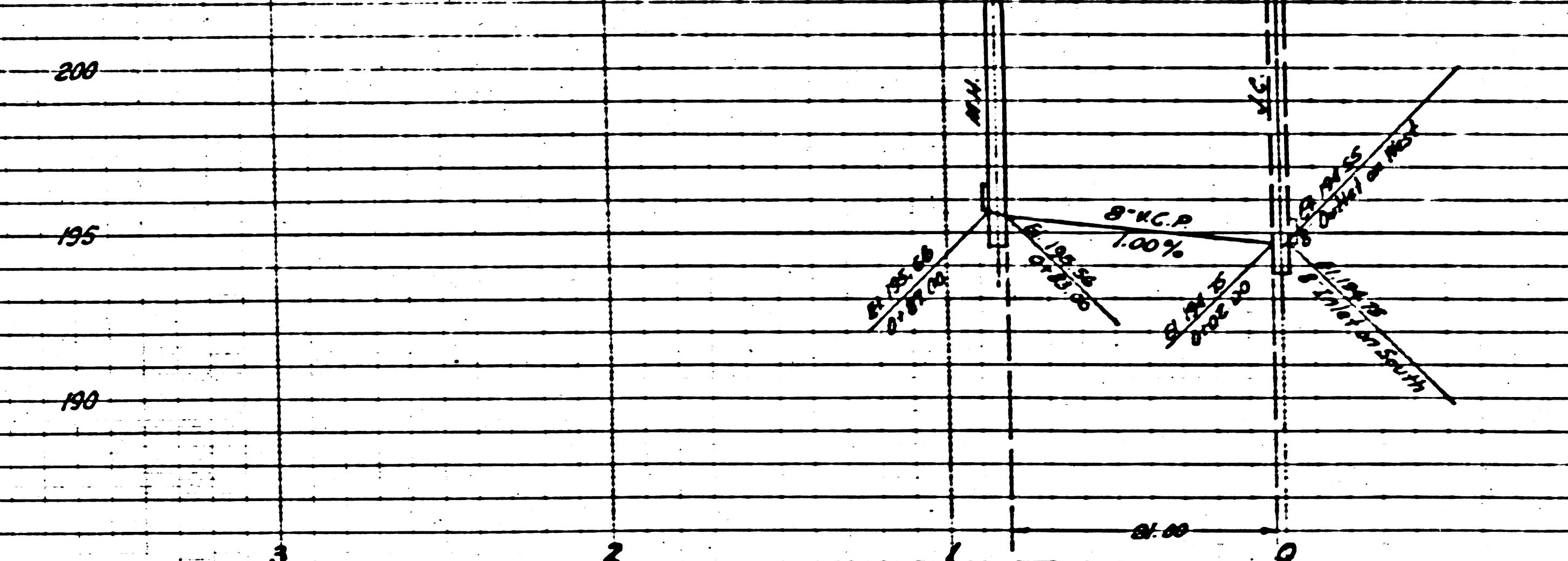
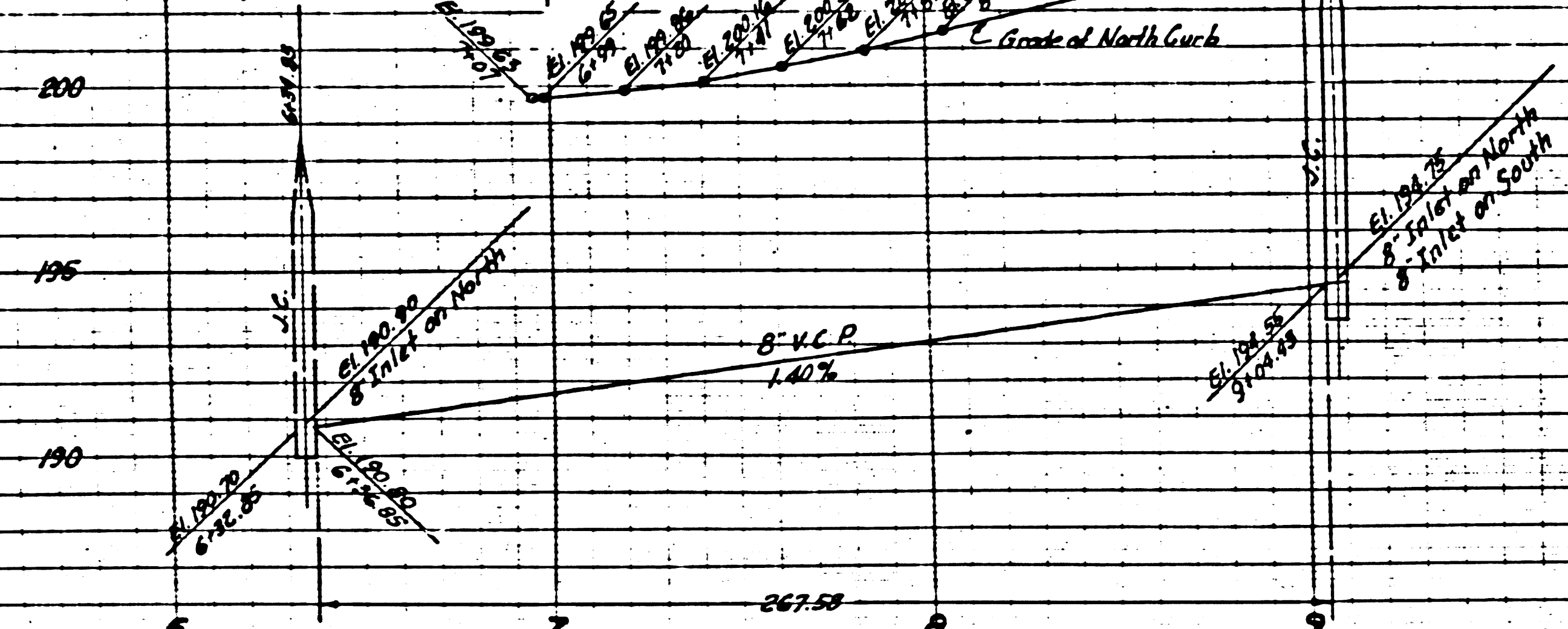
(B)

(A)

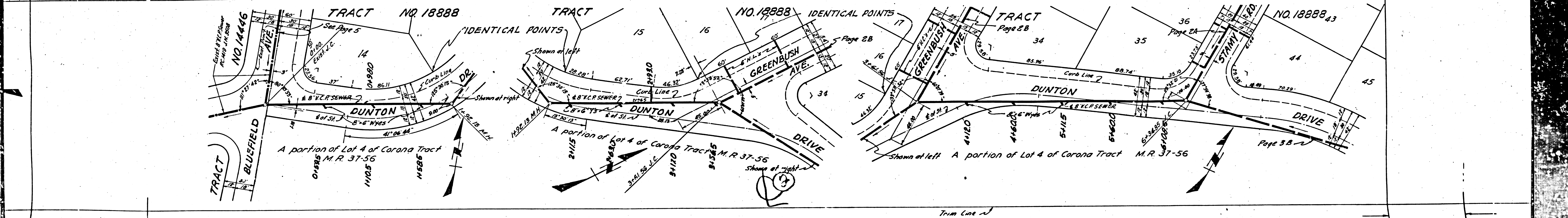
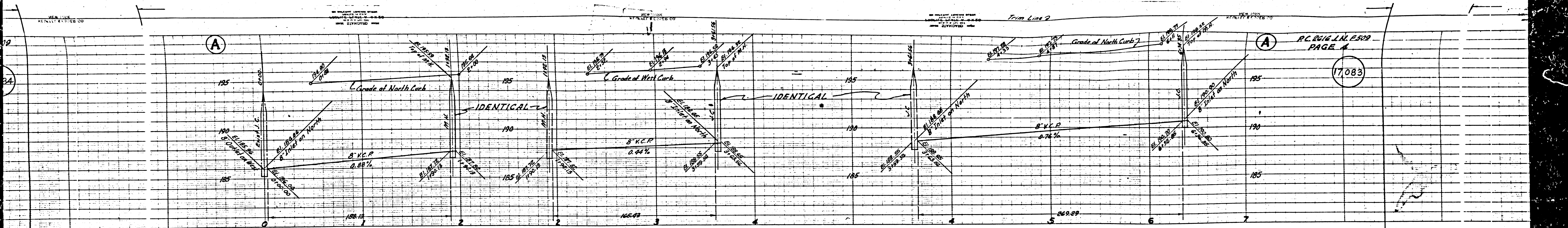
(A)

R.C. 2616 L.N. E509
PAGE 3

17082



Trim Line



RC 216 L.N. 1509
PAGE 4
17083

3

Page 3 B

Trim Line

