

PUENTE BLDG. DIST. 2

Trim Line

J.N.F. 514
S.F. 2

B.M. P.S.-60 L.A. Co. Sec. E.B. 1244, Pg. 161
B.M. 'X' on Brass Cap County Map in
Wood Hole E. Temple & Hudson Aves.
Elev. 329.779

(16,513)

- NOTE: NO REPRESENTATIVE OF THE COUNTY ENGINEER WILL SURVEY OR LAY OUT ANY PORTION OF THE WORK.
- THE OWNER OR HIS AUTHORIZED REPRESENTATIVE SHALL FURNISH THE COUNTY ENGINEER WITH GRADE SHEETS AND STATIONS FOR ALL HOUSE LATERALS AND Y BRANCHES AND SHALL PROVIDE STAKES FOR THESE AT THEIR PROPER LOCATIONS WITH STATIONING PLAINLY MARKED. ANY CHANGE IN LOCATION SHALL BE REQUESTED IN WRITING BY THE OWNER OR HIS REPRESENTATIVE.
- NO CHANGES SHALL BE MADE IN THESE PLANS WITHOUT APPROVAL OF THE COUNTY ENGINEER.
1. USE STANDARD MANHOLE DEGMES AND COVERS, 3-0-17.
 2. USE STANDARD STRENGTH PIPE.
 3. USE CEMENT MORTAR FOR ALL VITRIFIED CLAY PIPE JOINTS.
 4. RESURFACE ALL TRENCH WITHIN PAVED AREAS TO MEET L.A. COUNTY ROAD DEPT. REQUIREMENTS.
 5. ENCASE FOUR FEET OF SEWER AT POINTS OF INTERFERENCE WITH PILES, 3-0-119.
 6. HOUSE LATERALS TO BE CONSTRUCTED WITH "INVERT" AT PROPERTY LINE.
 7. ALL STRUCTURES SHALL BE BRICK SEWER STRUCTURES, 3-0-104.
8. FOR ALLOWABLE LEAKAGE TEST, USE FORMULA NO. 1, SPEC'S. SEC. 51
9. PROVIDE STAKES ON THE PROPERTY LINES OR PROPERTY LINES PRODUCED AT RIGHT ANGLES TO THE SEWER LINE AT THE CENTERLINE OF EACH MANHOLE.

PROFILE, ALIGNMENT, AND GRADE OF
SANITARY SEWERS
TO BE CONSTRUCTED IN

TRACT NO. 1705-7

PAGE 1
P.C. 2618
J.N.F. 514

(16,512)

PRIVATE CONTRACT NO. 2618

W. S. 38

SHEET 1 OF 1 SHEETS

SCALE: VERT. 1" = 4' HORIZ. 1" = 40' FEBRUARY 26, 1953

PREPARED IN THE OFFICES OF

Mernd J. Withney Reg. C.E. No. 6198

FOR LEGEND SEE PLAN NO. 3-a-04

NOTE: GRADES TO WHICH THIS IMPROVEMENT IS TO BE CONSTRUCTED ARE SHOWN BY PLANS AND MANHOLE GRADE POINTS FOR TOP OF CURB, CENTER LINE OF STREETS, OR CENTER LINE OF ALLEY ARE SHOWN BY CIRCLES ON PROFILES. AT ALL POINTS BETWEEN DESIGNATED POINTS THE GRADE SHALL BE ESTABLISHED AS TO CENTERLINE OF STREET OR LINE BETWEEN TWO DESIGNATED POINTS. ELEVATIONS ARE IN FEET ABOVE U.S.C.S. DATUM OR MEAN SEA LEVEL.

THIS DRAWING AND THE DATA HEREON ARE HEREBY MADE A PART OF THE SPECIFICATIONS. WORK SHALL BE CONSTRUCTED ACCORDING TO SPECIFICATIONS ON FILE IN THE OFFICE OF THE COUNTY ENGINEER AND SHALL BE INSPECTED ONLY IN THE PRESENCE OF THE COUNTY ENGINEER. BEFORE WORK CAN BE STARTED THE CONTRACTOR MUST OBTAIN A PERMIT TO EXCAVATE IN COUNTY STREETS FROM THE L.A. COUNTY ROAD DEPT. THE MEAS. & DIV. SHALL MAKE A RECORD WITH THE COUNTY ENGINEER, 133 L.A. COUNTY ENGINEERING BUILDING, SUFFICIENT TO COVER THE COST OF CONSTRUCTION INSPECTION AND RECORD PLANS.

APPROVAL OF THIS PLAN BY THE COUNTY OF LOS ANGELES DOES NOT CONSTITUTE A REPRESENTATION AS TO THE ACCURACY OF THE LOCATION OF OR THE EXISTENCE OR NON-EXISTENCE OF ANY UNDERGROUND UTILITY, PIPE, OR STRUCTURE WITHIN THE LIMITS OF THIS PROJECT. THIS NOTE APPLIES TO ALL SHEETS.

COUNTY OF LOS ANGELES, CALIFORNIA

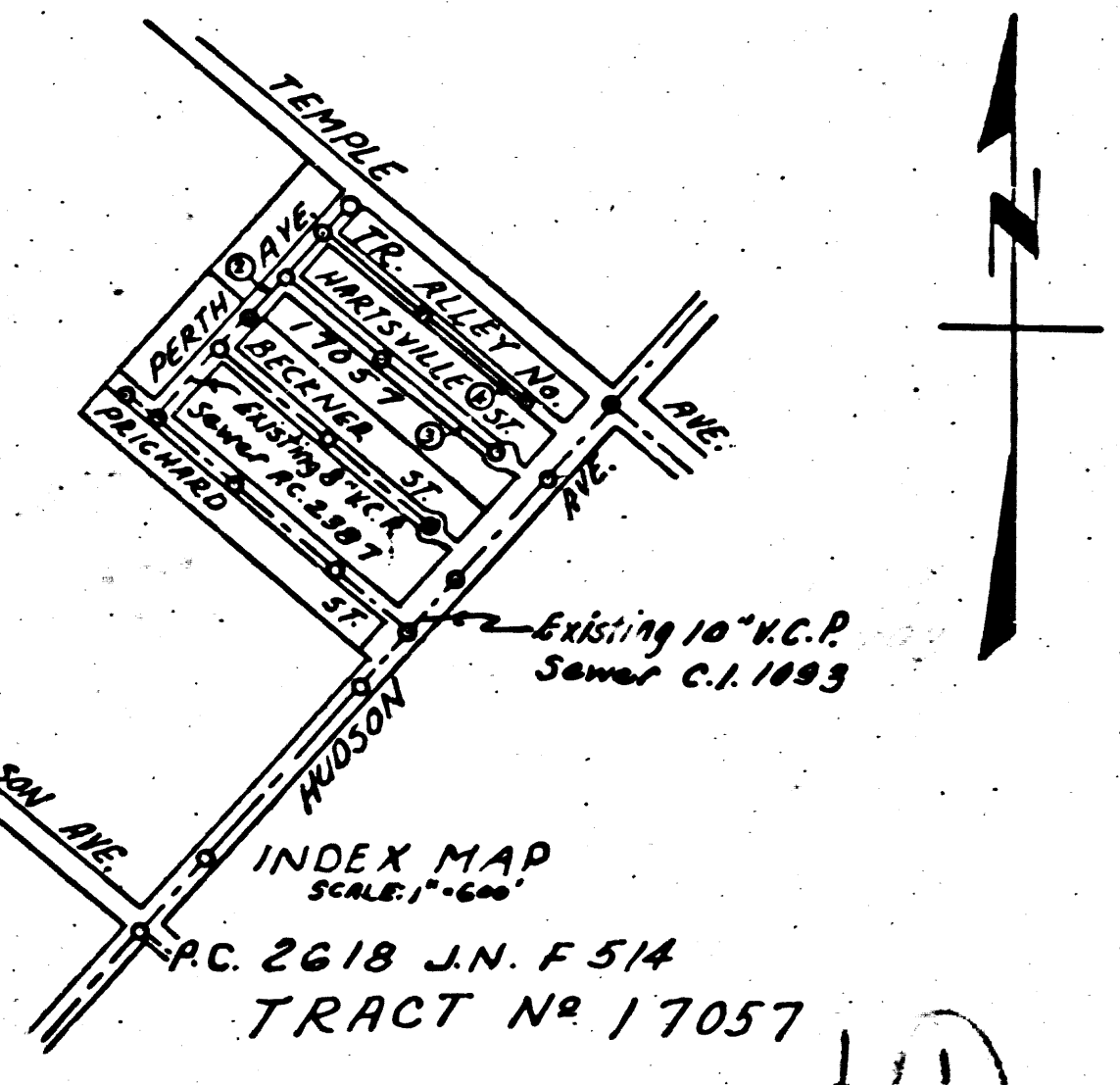
APPROVED, WILLIAM J. FOX, COUNTY ENGINEER

APPROVED, A.M. RAWN, CHIEF ENGINEER

BY *A. H. Gregory* CHIEF DEPUTY

BY *Robert E. Kuhn* OFFICER ENGINEER

CHECKED BY: *Robert E. Kuhn* 4-28-53 OFFICE OF COUNTY ENGINEER, REG. C.E. NO. 2860



SHEET NO.	PAGES
1	1-4

INDEX MAP
SCALE: 1" = 60'
P.C. 2618 J.N.F. 514
TRACT NO. 1705-7

Checked 6-11-53 *M. Kern*

RECORD
133 L.A. COUNTY ENGINEERING BLDG.
LOS ANGELES, CALIF. 90012

REC
MAY 1953
L.A. CO. ENGINEER
P.C. 2618
J.N.F. 514

Trim Line

C.2618

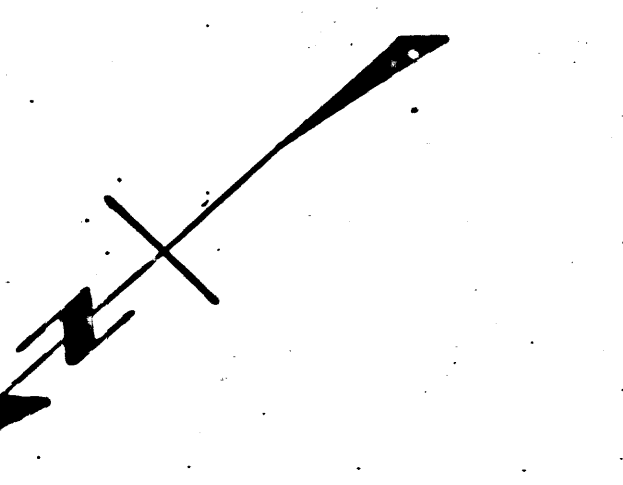
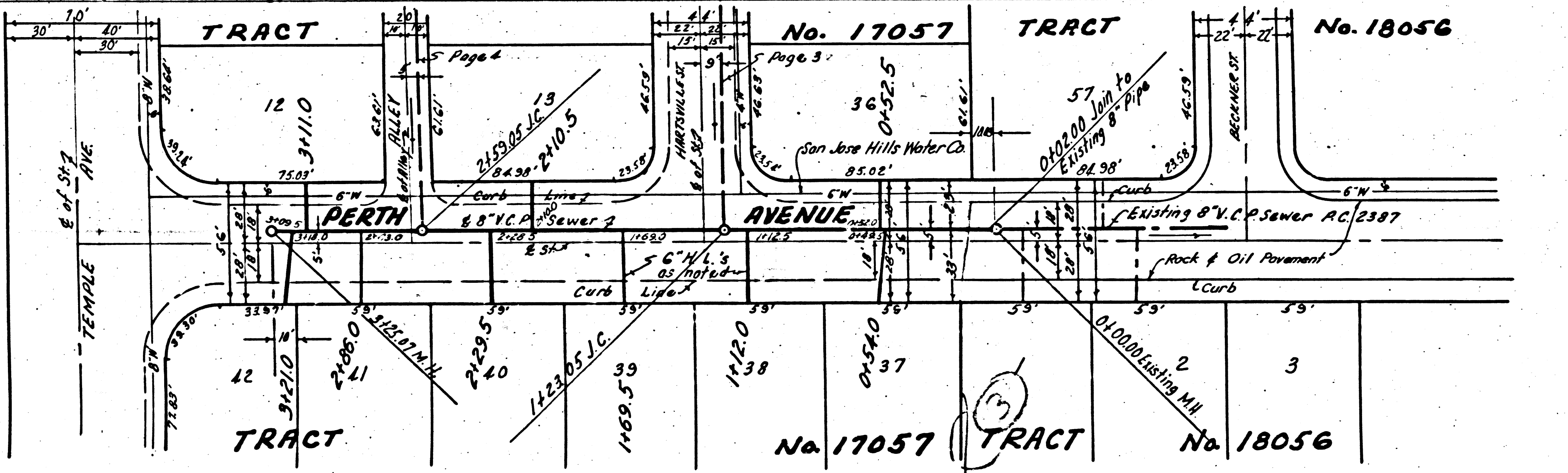
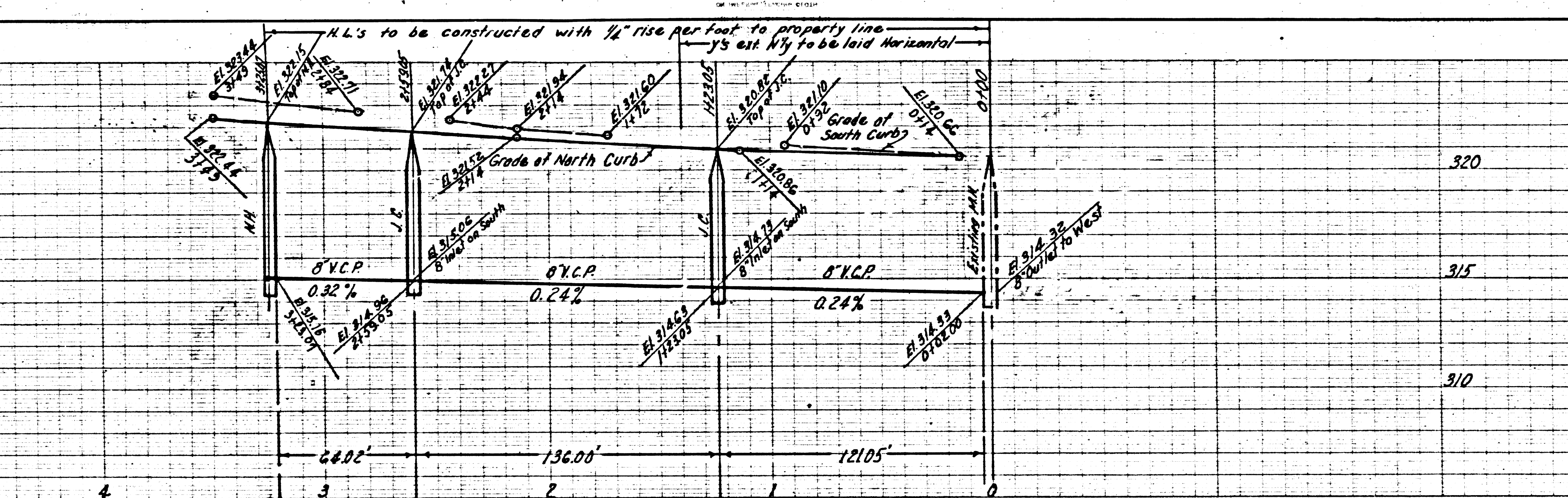
J.N.F. 514
PAGE 3

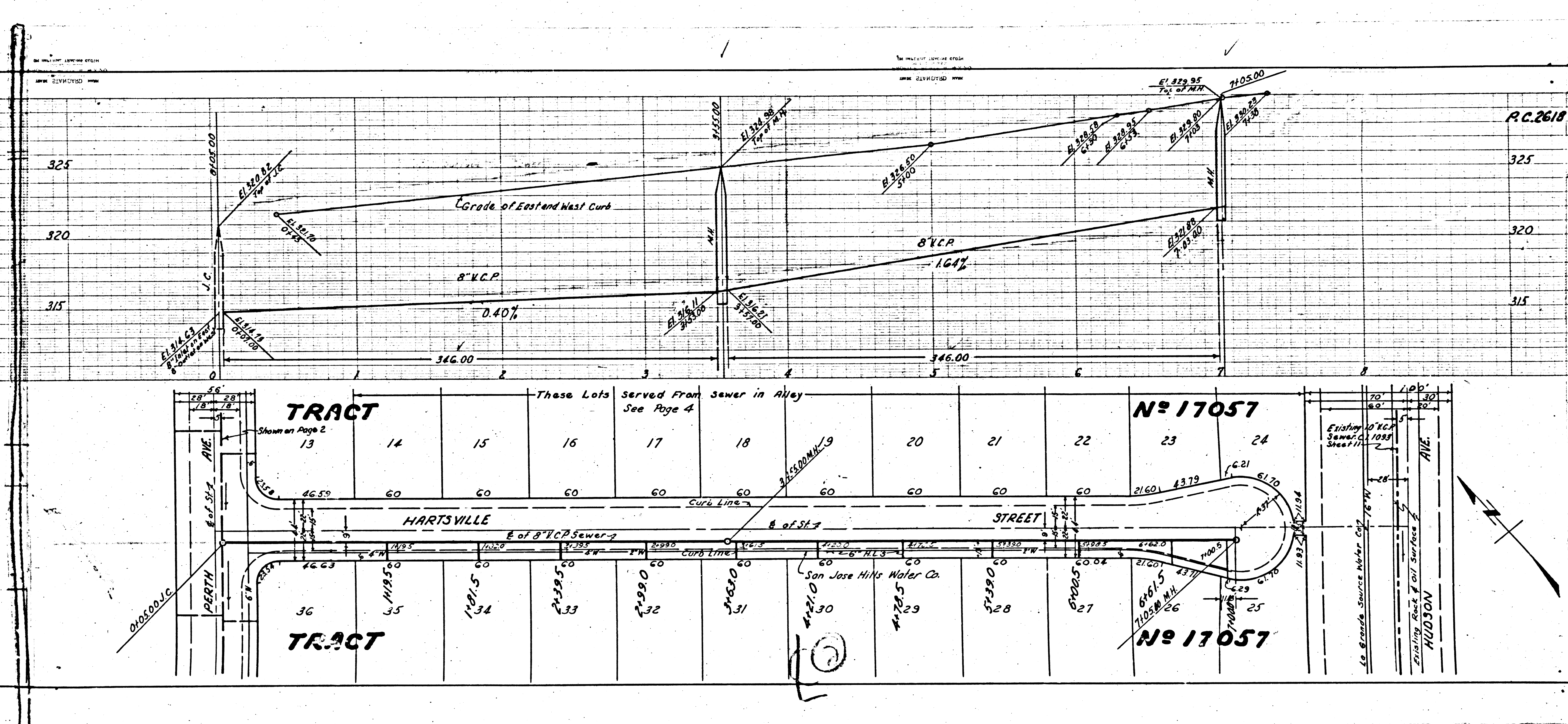
(16,514)

320
315
310

PC. 2618 J.N.F. 514
PAGE 2

(16,513)





P.C. 2618
 J.H.F. 574
 PAGE 3
 16,514

TRACT

N^o 17057

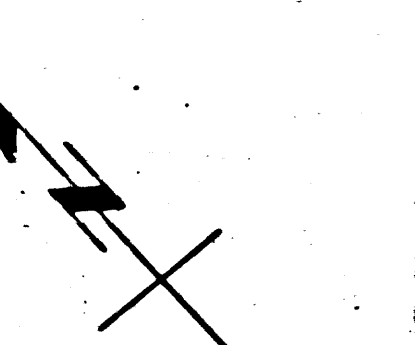
TRACT

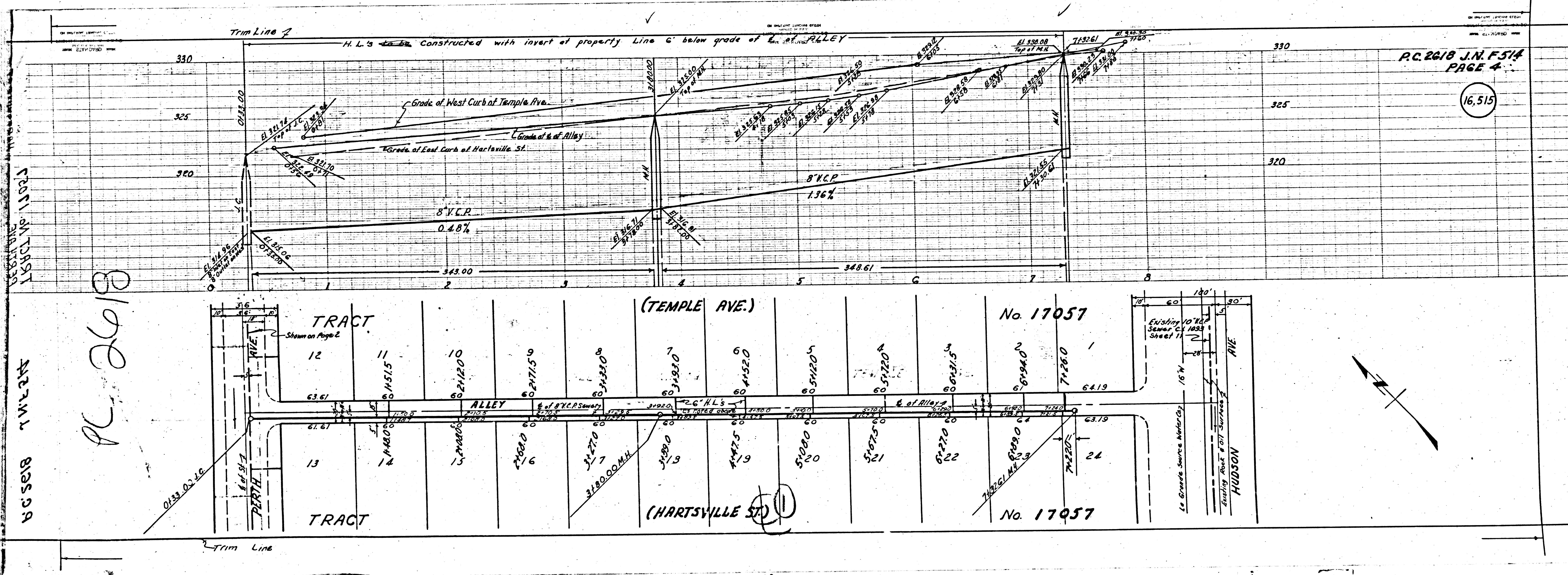
N^o 17057

These Lots Served From Sewer in Alley See Page 4

13	14	15	16	17	18	20	21	22	23	24
60	60	60	60	60	60	60	60	60	2160' 4379'	61.70'
36	35	34	33	32	31	30	29	28	27	26
1191.5	1191.5	1191.5	1191.5	1191.5	1191.5	1191.5	1191.5	1191.5	1191.5	1191.5

San Jose Hills Water Co.





PC 2618

W. 11/2' 132.21
W. 11/2' 132.21

