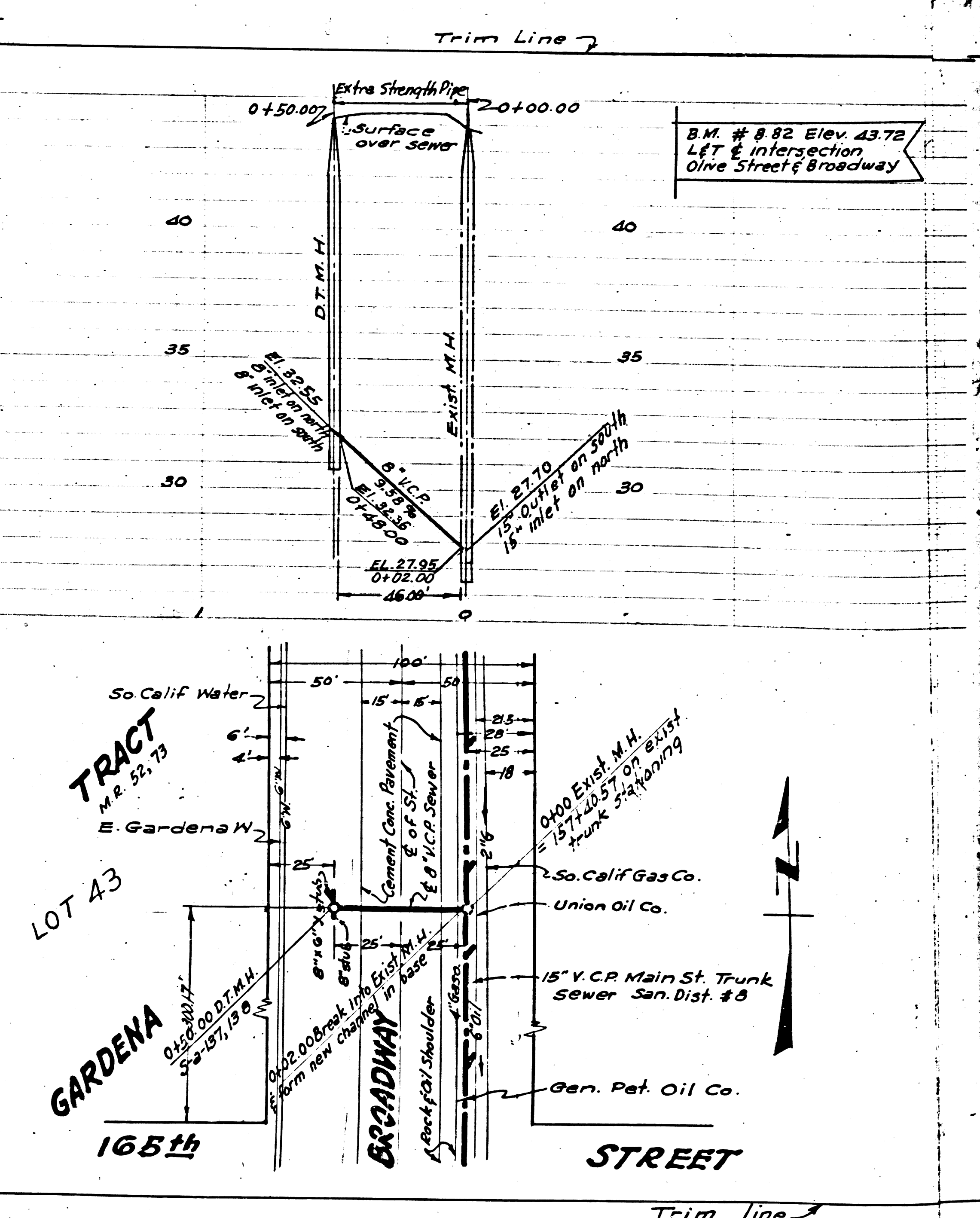


W 250

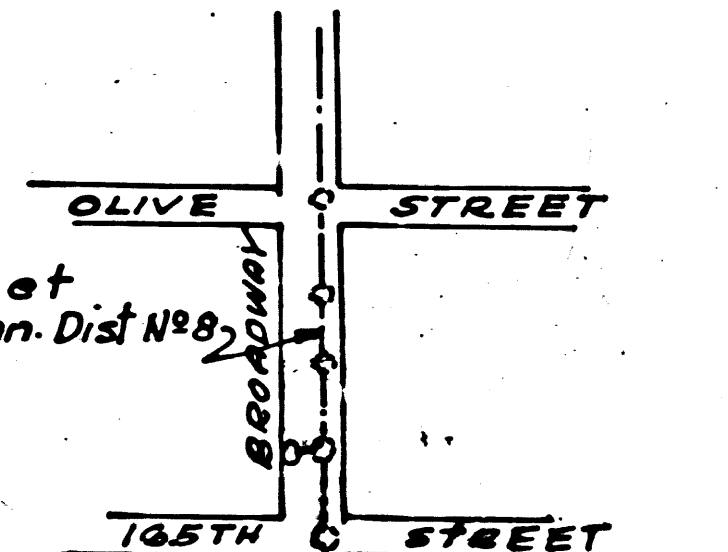
bc 555



LENNOX

NOTE:
 NO REPRESENTATIVE OF THE COUNTY ENGINEER WILL SURVEY OR LAY OUT ANY PORTION OF THE WORK.
 THE OWNER OR HIS AUTHORIZED REPRESENTATIVE SHALL FURNISH THE COUNTY ENGINEER WITH GRADE SHEETS AND STATIONS FOR ALL HOUSE LATERALS AND Y BRANCHES AND SHALL PROVIDE STAKES FOR THEM AT THEIR PROPER LOCATIONS WITH SIGHTING RANGELY MARKED. ANY CHANGE IN LOCATION SHALL BE REQUESTED IN WRITING BY THE OWNER OR HIS REPRESENTATIVE.
 NO REVISIONS SHALL BE MADE IN THESE PLANS WITHOUT APPROVAL OF THE COUNTY ENGINEER.

1. USE STANDARD MANHOLE FRAMES AND COVERS, 3'-0\"/>



INDEX MAP
RC. 2022 JN F 520

Note: The contractor shall satisfy himself of all substructures; and shall be responsible for their location.
 Revision approved *Rubio* 5-18-53
 Office of County Engineer - Reg. C.E. 7860
 Location of Crossing moved Southerly

PROFILE, ALIGNMENT, AND GRADE OF
 SANITARY SEWERS
 TO BE CONSTRUCTED IN
 BROADWAY
 SOUTH OF OLIVE ST.

PC 2622
 J.N. F 520
 Page 1.
 16,380

PRIVATE CONTRACT NO. 2622
 W.S. 26
 ONE SHEET
 MARCH 1953

SCALE: VERT. 1" = 4'
 HORIZ. 1" = 40'
 PREPARED IN THE OFFICES OF
 RALPH B. MUNNELLY
 BY *Ralph B. Munnelly*
 FOR LEGEND SEE PLAN NO. 5-a-64

NOTE:
 GRADES TO WHICH THIS IMPROVEMENT IS TO BE CONSTRUCTED ARE SHOWN ON PLANS AND PROFILES. GRADE POINTS FOR TOP OF CURBS, CENTER LINE OF STREETS, OR CENTER LINE OF ALLEY ARE SHOWN BY CIRCLES ON PROFILES. AT ALL POINTS BETWEEN DESIGNATED POINTS THE GRADE SHALL BE ESTABLISHED SO AS TO CONFORM TO A STRAIGHT LINE DRAWN BETWEEN SAID DESIGNATED POINTS. ELEVATIONS ARE IN FEET ABOVE U.S.C. DATUM OR MEAN SEA LEVEL.
 THIS DRAWING AND THE DATA HEREON ARE HEREBY MADE A PART OF THE SPECIFICATIONS. WORK SHALL BE CONSTRUCTED ACCORDING TO SPECIFICATIONS ON FILE IN THE OFFICE OF THE COUNTY ENGINEER AND SHALL BE PROSECUTED ONLY IN THE PRESENCE OF THE COUNTY ENGINEER. BEFORE WORK CAN BE STARTED, THE CONTRACTOR MUST OBTAIN A PERMIT TO EXCAVATE IN COUNTY STREETS FROM THE L.A. COUNTY ROAD DEPT., 100 N. 10th ST. AND MAKE A DEPOSIT WITH THE COUNTY ENGINEER, 738 L.A. COUNTY ENGINEERING BUILDING, SUFFICIENT TO COVER THE COST OF CONSTRUCTION INSPECTION AND RECORD PLANS.
 APPROVAL OF THIS PLAN BY THE COUNTY OF LOS ANGELES DOES NOT CONSTITUTE A REPRESENTATION AS TO THE ACCURACY OF THE LOCATION OF, OR THE EXISTENCE OR NON-EXISTENCE OF ANY UNDERGROUND UTILITY, PIPE, OR STRUCTURE WITHIN THE LIMITS OF THIS PROJECT. THIS NOTE APPLIES TO ALL SHEETS.

COUNTY OF LOS ANGELES, CALIFORNIA
 APPROVED, WILLIAM J. FOX, COUNTY ENGINEER
 BY *J.W. Fox*
 ASST. CHIEF DEPUTY
 APPROVED, AM RAWN
 CHIEF ENGR. OF SAN. DIST. NO. 8
 BY *J.W. Fox*
 DEPUTY ENGINEER
 CHECKED BY: *Rubio* 4-1-53
 OFFICE OF COUNTY ENGINEER, REG. C.E. No. 7860

RECEIVED

RECEIVED

W 250

W 250