

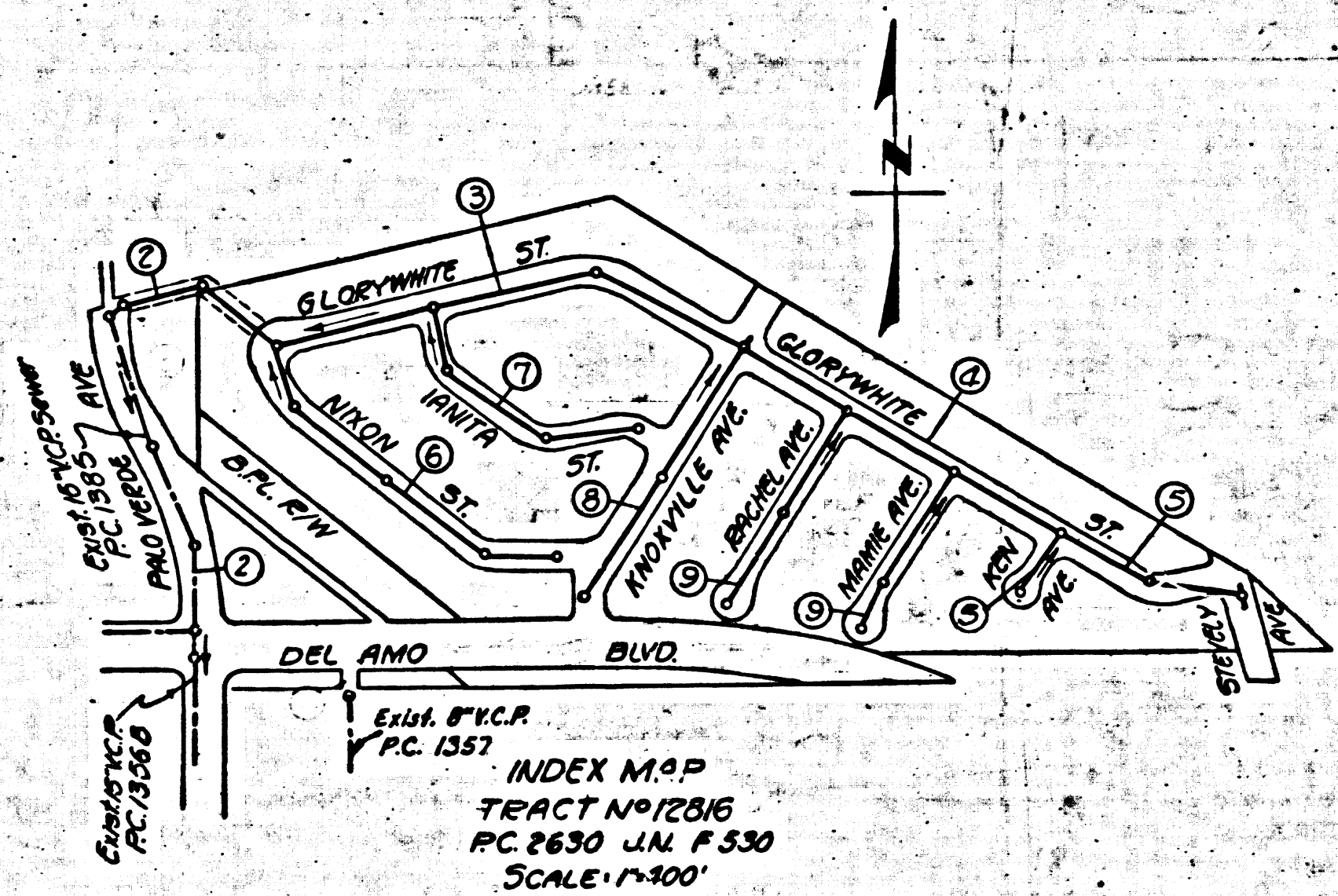
Bellflower, Bldg. Dist. 4

B.M. 57135-56 Elev. 45.627
L.C.N. in W. Curb Woodcut #115.
Curb return at SW Corner Carson St.

Plm Line 7

- NOTE:
NO REPRESENTATIVE OF THE COUNTY ENGINEER WILL SURVEY OR LAY OUT ANY PORTION OF THE WORK.
THE OWNER OR HIS AUTHORIZED REPRESENTATIVE SHALL FURNISH THE COUNTY ENGINEER WITH GRADE SHEETS AND STATIONS FOR ALL HOUSE LATERALS AND Y BRANCHES AND SHALL PROVIDE STAKES FOR THEM AT THEIR PROPER LOCATIONS WITH STATIONING PLAINLY MARKED. ANY CHANGE OF LOCATION SHALL BE REQUESTED IN WRITING BY THE OWNER OR HIS REPRESENTATIVE.
NO REVISIONS SHALL BE MADE IN THESE PLANS WITHOUT APPROVAL OF THE COUNTY ENGINEER.
1. USE STANDARD MANHOLE FRAMES AND COVERS, 5'-11".
 2. USE STANDARD STREET 5TH PIPE EXCEPT AS NOTED.
 3. SEE BELOW
 4. RESURFACE ALL TRENCH WITHIN PAVED AREA TO MEET L.A. COUNTY ROAD DEPT. REQUIREMENTS.
 5. ENCASE FOUR FEET OF SEWER AT POINTS OF INTERFERENCE WITH POLES 5'-19".
 6. HOUSE LATERALS TO BE CONSTRUCTED WITH INVERT AT PROPERTY LINE 5 FEET BELOW CURB GRADE.
 7. ALL STRUCTURES SHALL BE BRICK-SEWER STRUCTURES, 5'-10", EXCEPT AS NOTED.
 8. PROVIDE STAKES ON THE PROPERTY LINES OR PROPERTY LINES PROVIDED AT RIGHT ANGLES TO THE SEWER LINE AT THE CENTER LINE OF EACH MANHOLE.
 9. FOR ALLOWABLE LEAKAGE TEST USE FORMULA NO. 2 SPECS SEC. 51.
 10. MANHOLE TOPS IN UNIMPROVED RIGHTS-OF-WAY TO BE 6" ABOVE GRADE.
 11. USE METAL GASKETS AND FORMS WITH CEMENT MORTAR AS A JOINTING MATERIAL PER SPECS. SEC. 32 & 33.

SHEET NO.	PAGES
1	1-9
2	5-9



checked 1-19-54 McKern

ENGINEERING SERVICE CORPORATION			
1127 W. WASHINGTON BLVD.			
LOS ANGELES 15 CALIF. PR. 7261			
REVISIONS		TRACED BY	
		DESIGNED BY K.S.	
		CHK'D BY	
		SUBMITTED	
SUB STRUCTURES CH'D			
W. O. NO.	DWG. NO.	DATE	SCALE
5977-79			As Shown 11-9-50 1/2"=1'-0"

PROFILE, ALIGNMENT AND GRADE OF
SANITARY SEWERS
TO BE CONSTRUCTED IN
TRACT NO. 12816

PC. 2630
J.N. F530
PAGE 1

17,575

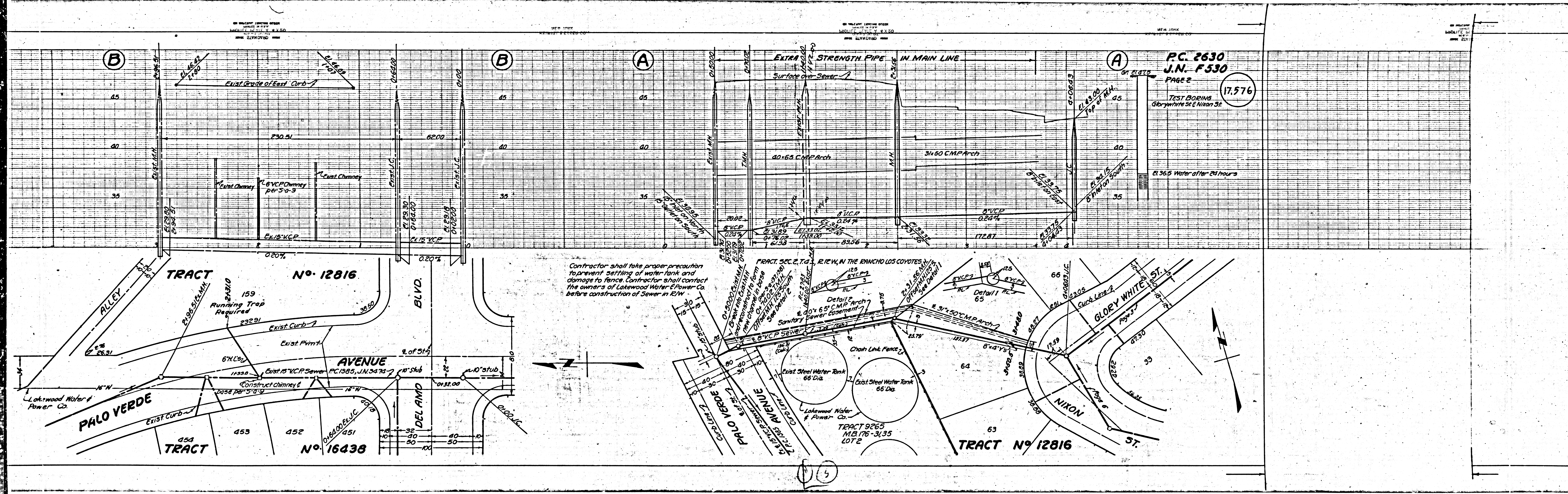
PRIVATE CONTRACT NO. 2630
W. S. 31
SHEET 1 OF 2 SHEETS
SCALE: VERT. 1" = 4'
HOR. 1" = 40'
MARCH, 1953
PREPARED IN THE OFFICES OF
ENGINEERING SERVICE CORPORATION

BY: *E. J. Kelly*
FOR LEGEND
SEE PLAN NO. 5-14

NOTE:
GRADES TO WHICH THIS IMPROVEMENT IS TO BE CONSTRUCTED ARE SHOWN ON PLANS AND PROFILES. GRADE POINTS FOR TOP OF CURB, CENTER LINE OF STREETS, OR CENTER LINE OF ALLEY ARE SHOWN BY CIRCLES ON PROFILES. AT ALL POINTS BETWEEN DESIGNATED POINTS THE GRADE SHALL BE ESTABLISHED SO AS TO CONFORM TO A STRAIGHT LINE DRAWN BETWEEN SAID DESIGNATED POINTS. ELEVATIONS ARE IN FEET ABOVE U.S.C.S. DATUM OR MEAN SEA LEVEL.
THIS DRAWING AND THE DATA HEREON ARE HEREBY MADE A PART OF THE SPECIFICATIONS.
WORK SHALL BE CONSTRUCTED ACCORDING TO SPECIFICATIONS ON FILE IN THE OFFICE OF THE COUNTY ENGINEER AND SHALL BE PROSECUTED ONLY IN THE PRESENCE OF THE COUNTY ENGINEER.
BEFORE WORK CAN BE STARTED THE CONTRACTOR MUST OBTAIN A PERMIT TO EXCAVATE IN COUNTY STREETS FROM THE L.A. COUNTY ROAD DEPT. 108 W. 9TH ST. AND MAKE A DEPOSIT WITH THE COUNTY ENGINEER, 733 COUNTY ENGINEERING BUILDING SUFFICIENT TO COVER THE COST OF CONSTRUCTION INSPECTION AND RECORD PLANS.
APPROVAL OF THIS PLAN BY THE COUNTY OF LOS ANGELES DOES NOT CONSTITUTE A REPRESENTATION AS TO THE ACCURACY OF OR THE EXISTENCE OR NON-EXISTENCE OF ANY UNDERGROUND UTILITY, PIPE, OR STRUCTURE WITHIN THE LIMITS OF THIS PROJECT.

COUNTY OF LOS ANGELES, CALIFORNIA
WILLIAM J. FOX
COUNTY ENGINEER
APPROVED BY: *Richard E. Kuhn*
CHIEF ENGINEER
APPROVED BY: *J. J. Kelly*
COUNTY ENGINEER
CHECKED BY: *Richard E. Kuhn*
DATE: 4-3-53
OFFICE OF COUNTY ENGINEER
108 W. 9TH ST. LOS ANGELES, CALIF. 4

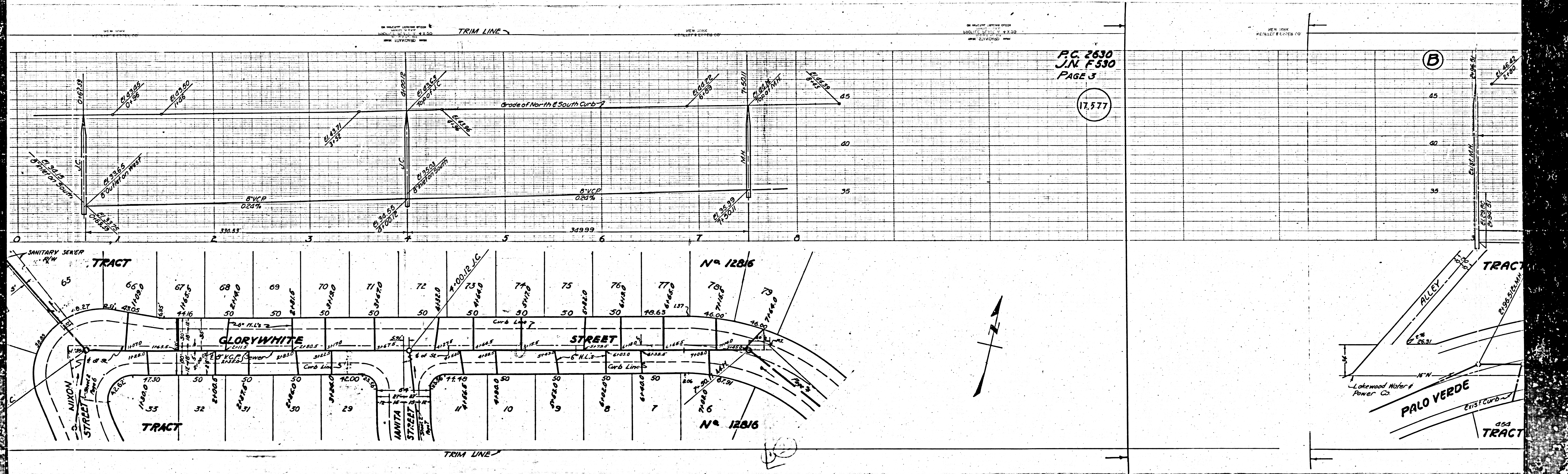
BLDG DIST. 4
 GLOBEWILE ST.
 SAN SEWER 5th
 BAYO KESDE AVE.
 17575
 PC 2630
 J.N. F530
 1

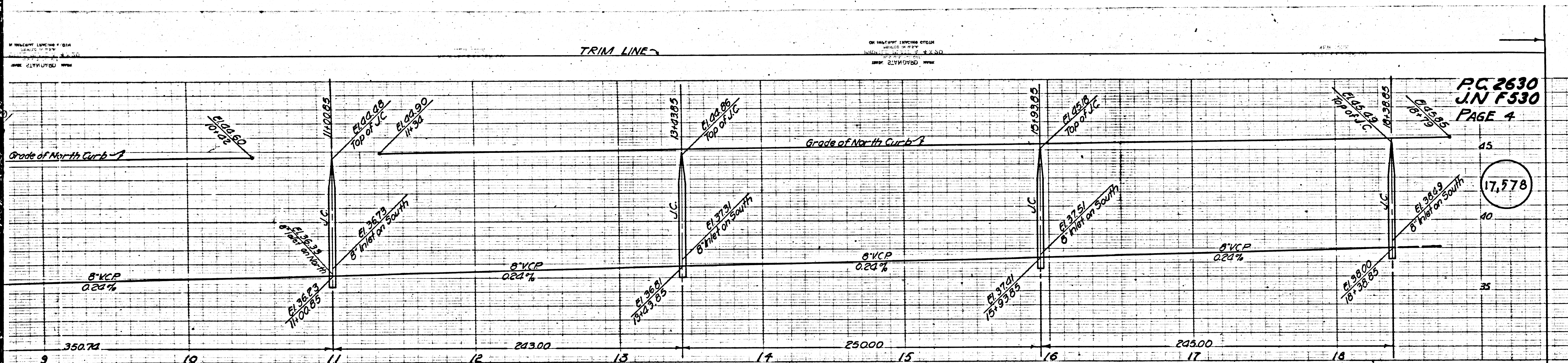


TRIM LINE

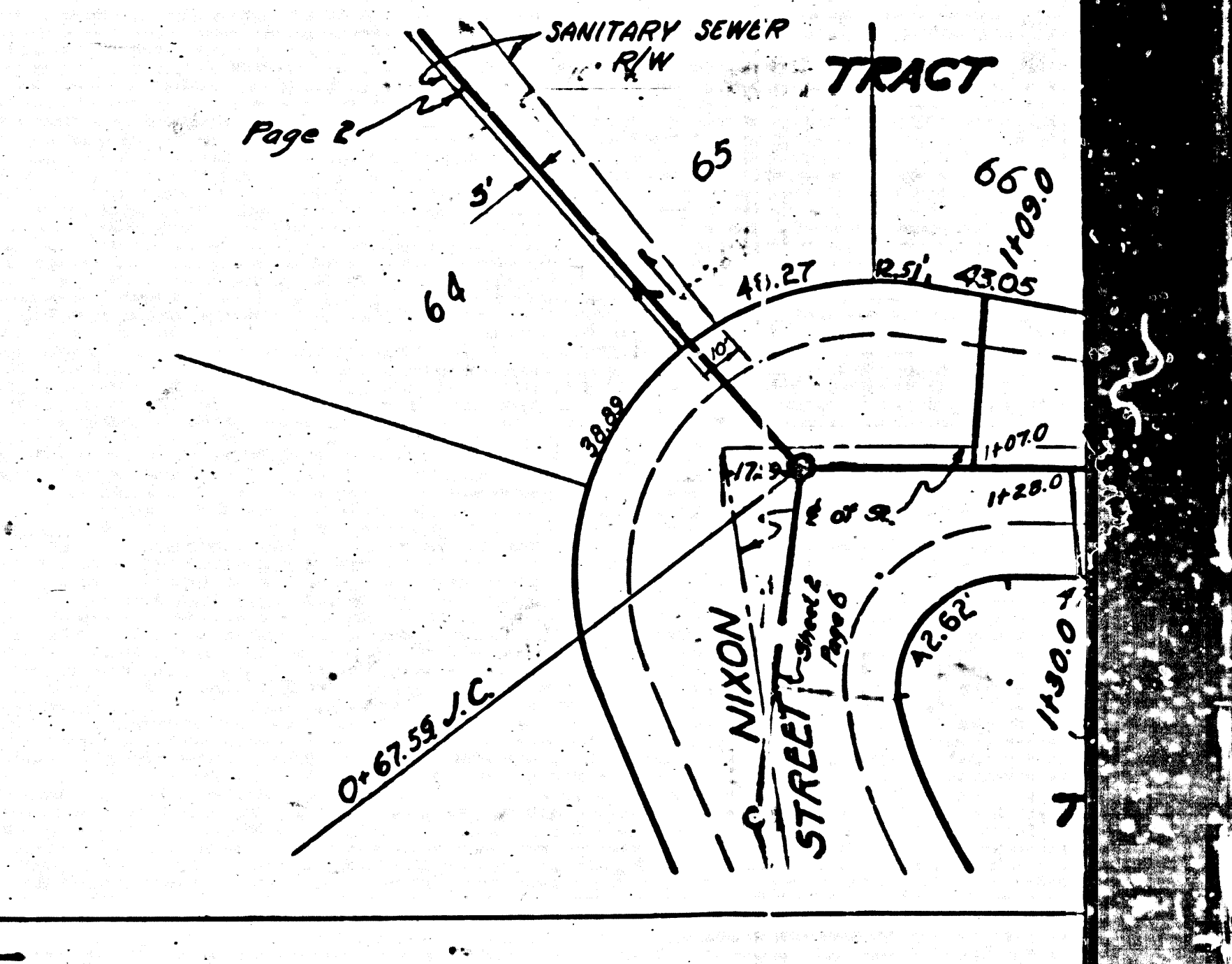
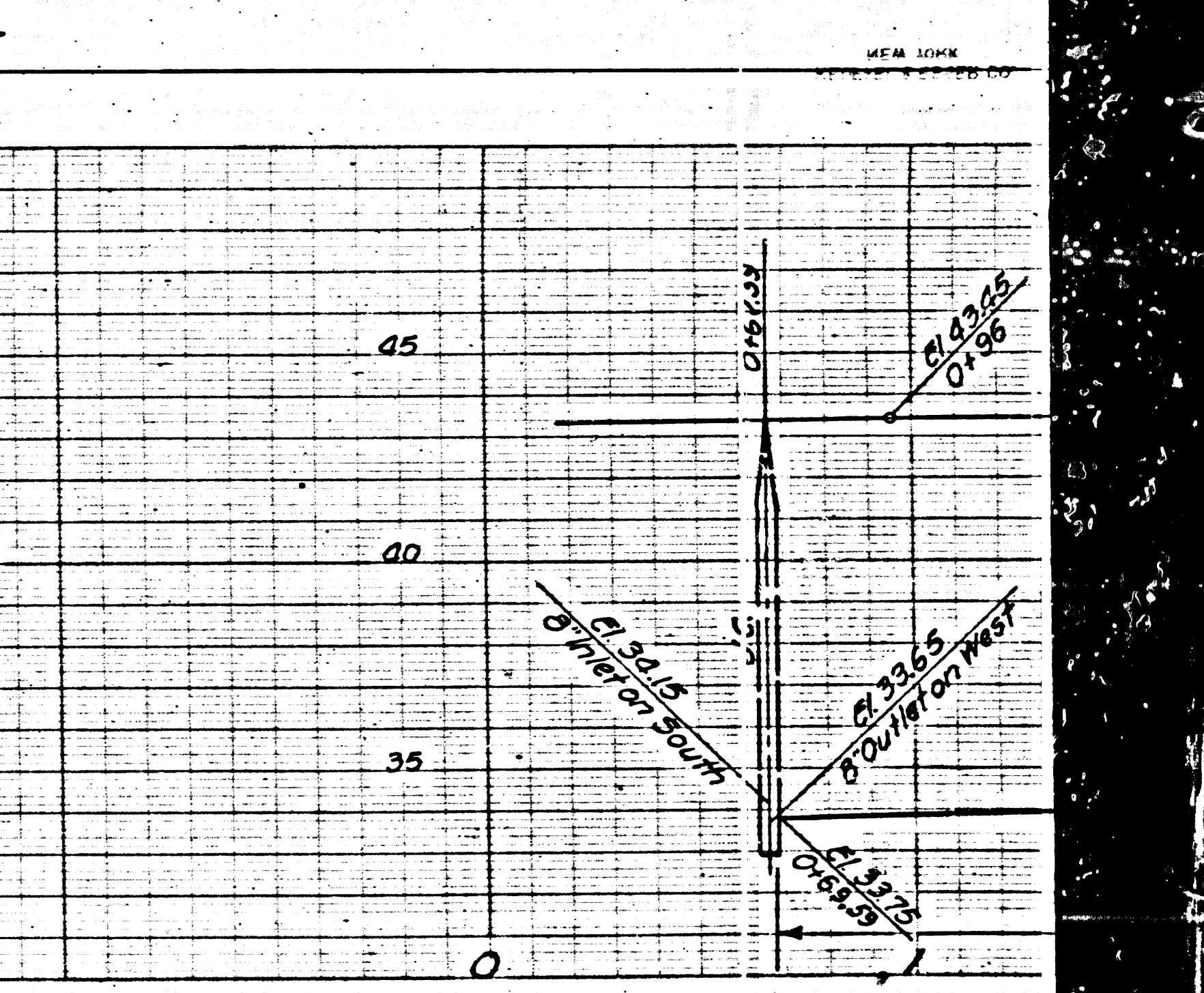
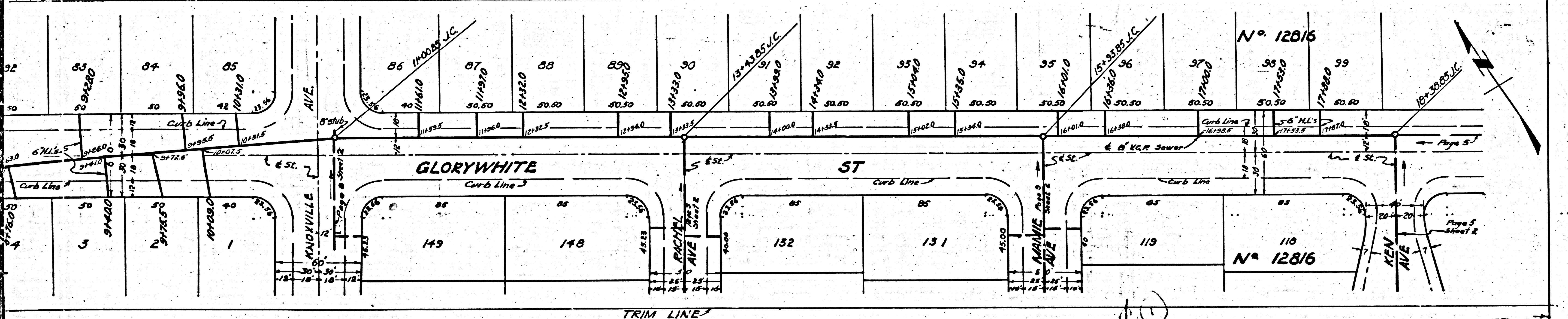
PC 2630
JIN F530
PAGE 3

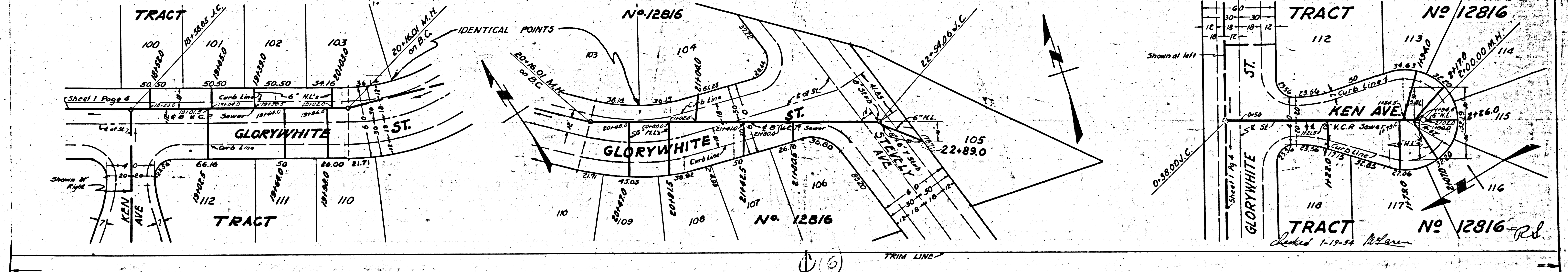
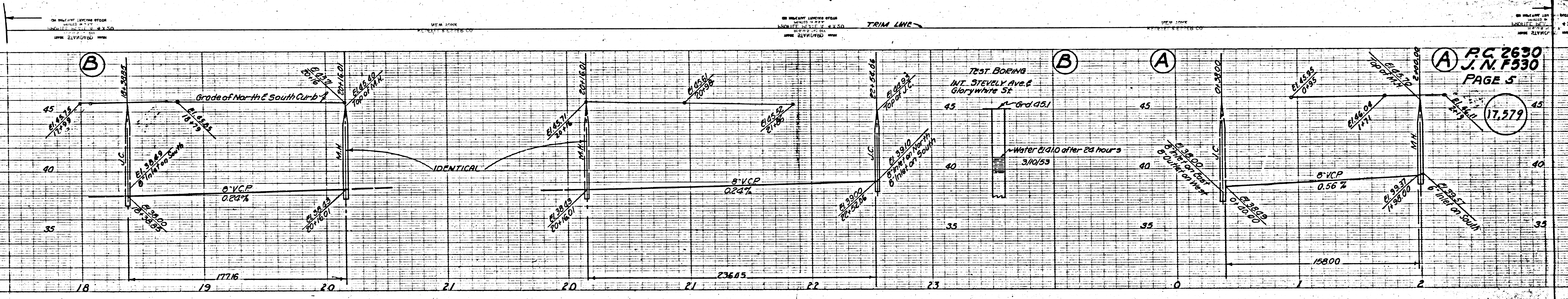
17.577





PC 2630
JN F530
PAGE 4





RC 2630
J.N.F.530
PAGE 5

17,579

5

ASAC M. ISBIE

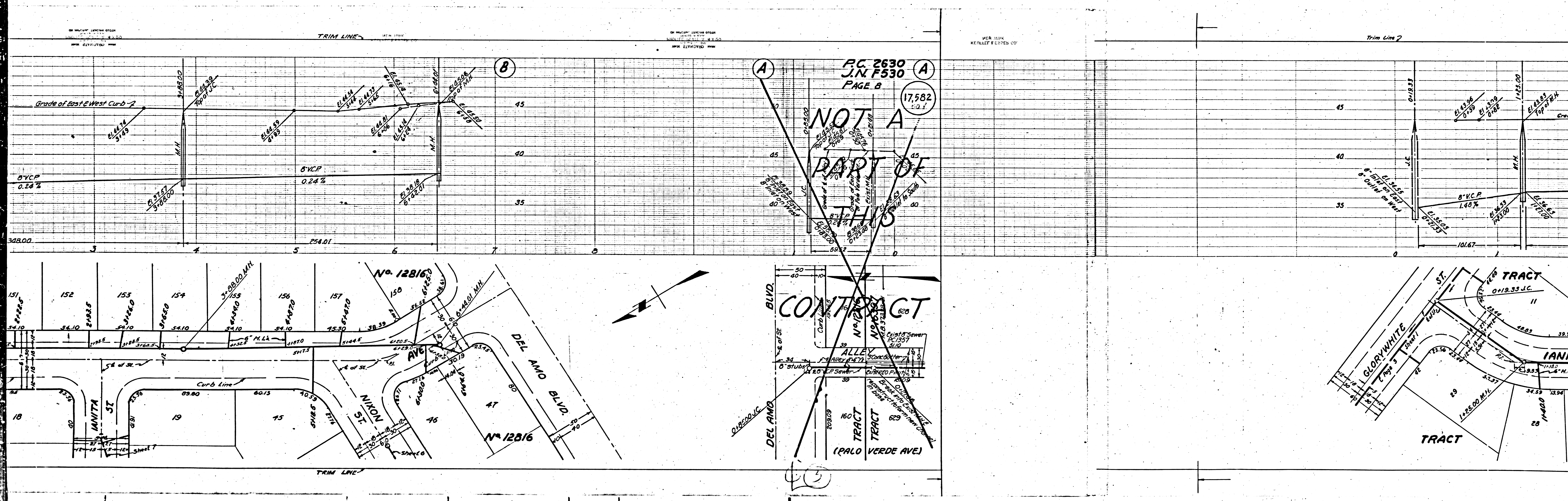
5
SHEET NO. 15816

RC 2630
J.N.F.530

5

Checked 1-19-54 M. Isbrie

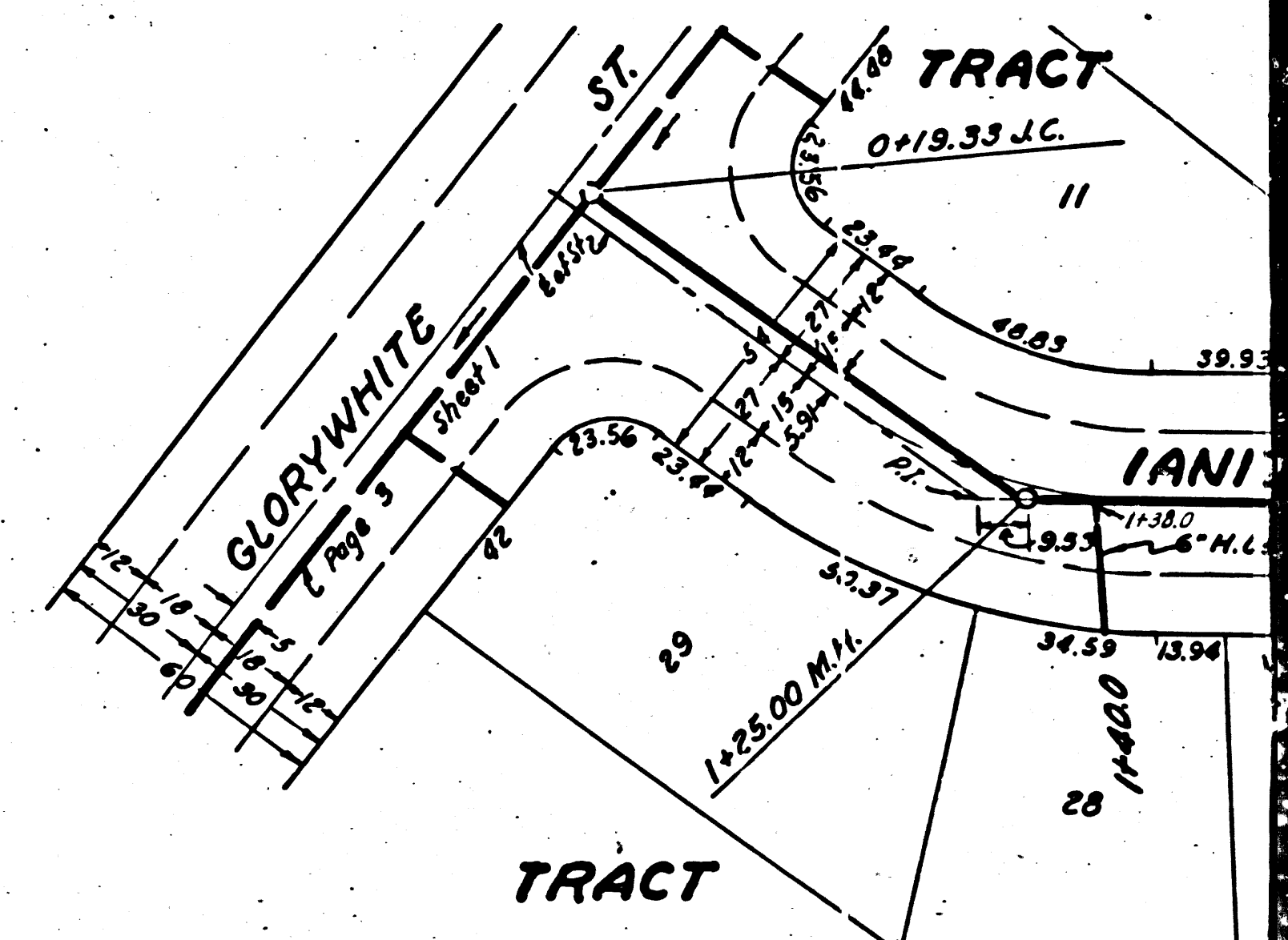
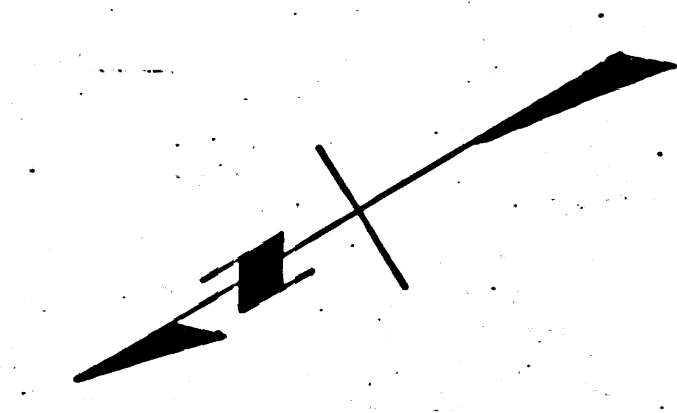
116



PC 2630
J.N. F530
PAGE B

17,582
± 0.1

**NOT A
PART OF
THIS
CONTRACT**

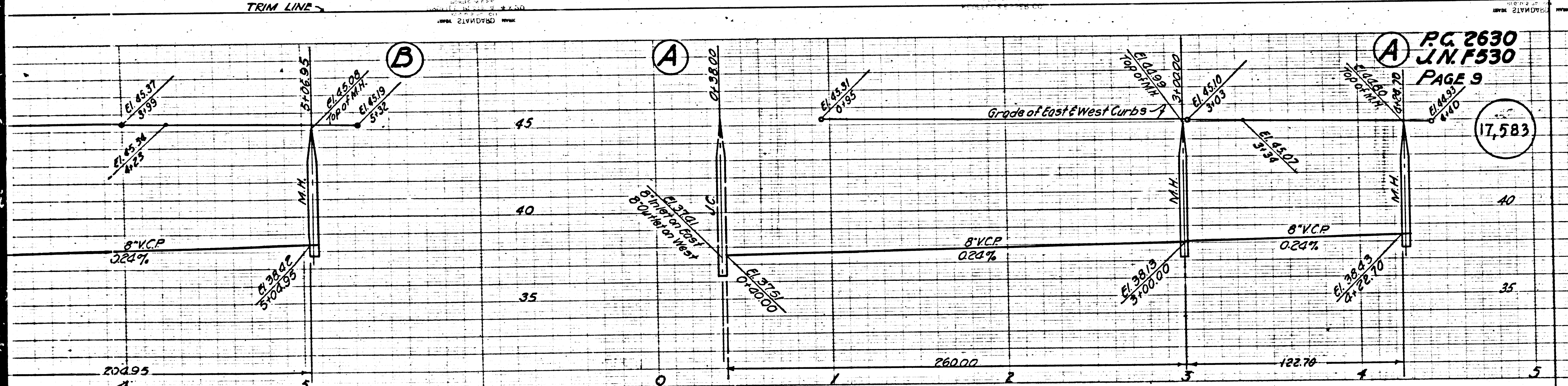


TRIM LINE

ON PLANT LOT LINE FROM
MAMIE AVE. TO
M.H. 214850

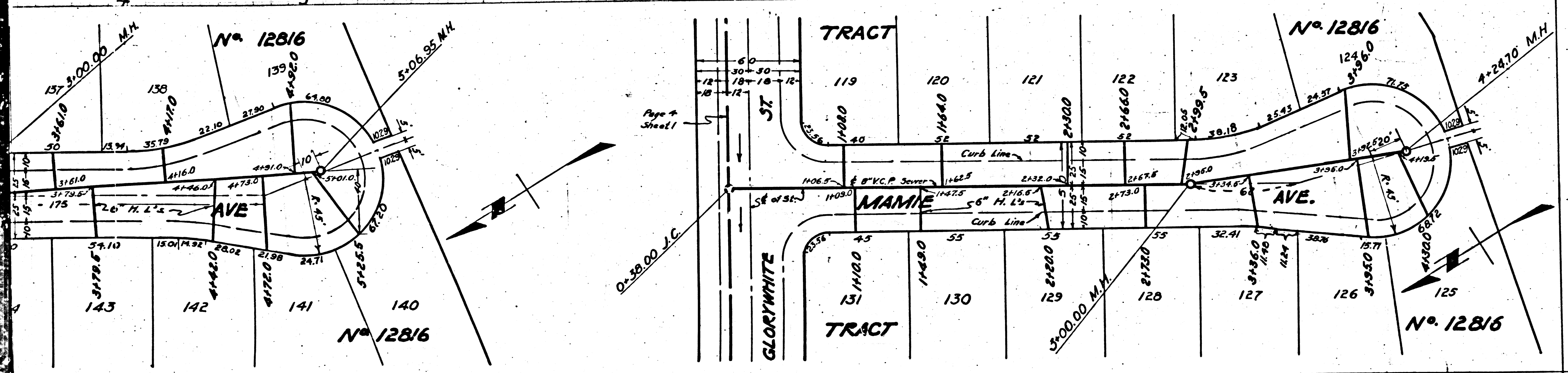
TRIM LINE

ON PLANT LOT LINE FROM
MAMIE AVE. TO
M.H. 214850



PG. 2630
J.N.F530
PAGE 9

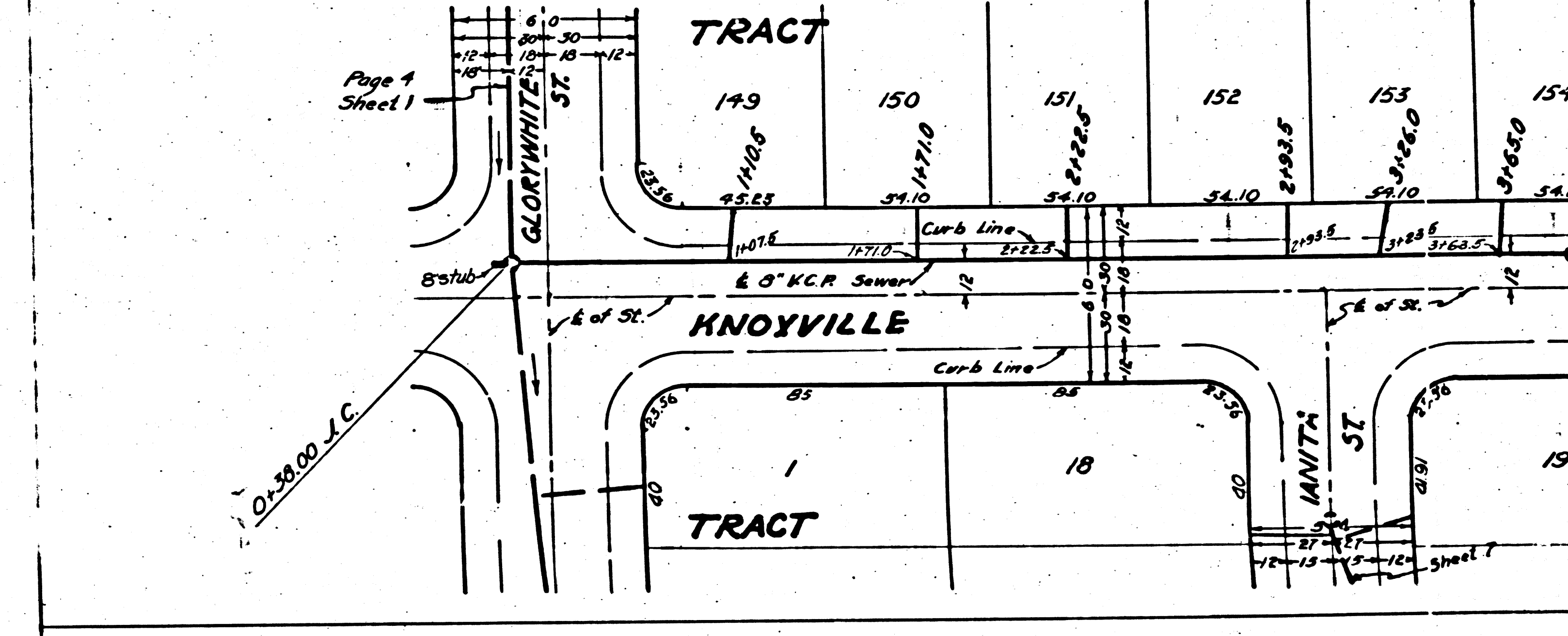
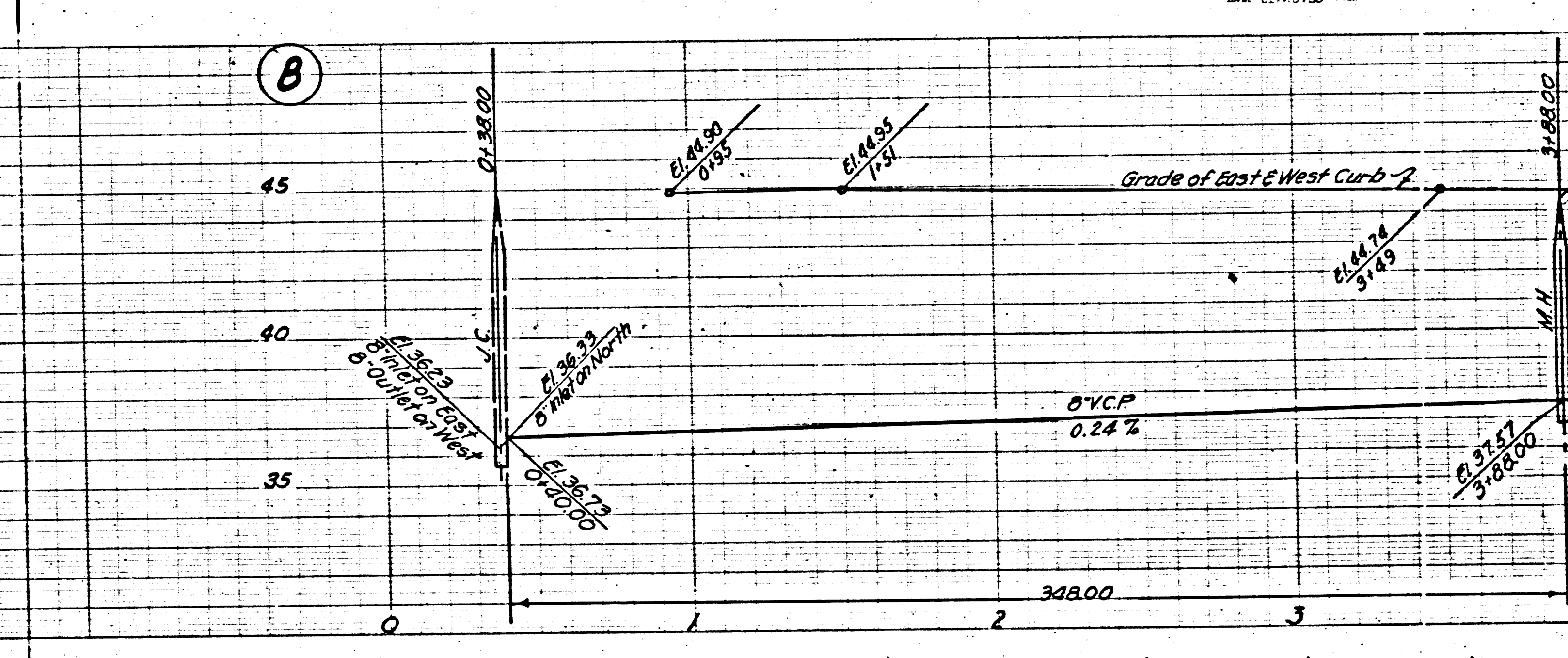
17,583



TRIM LINE

TRIM LINE

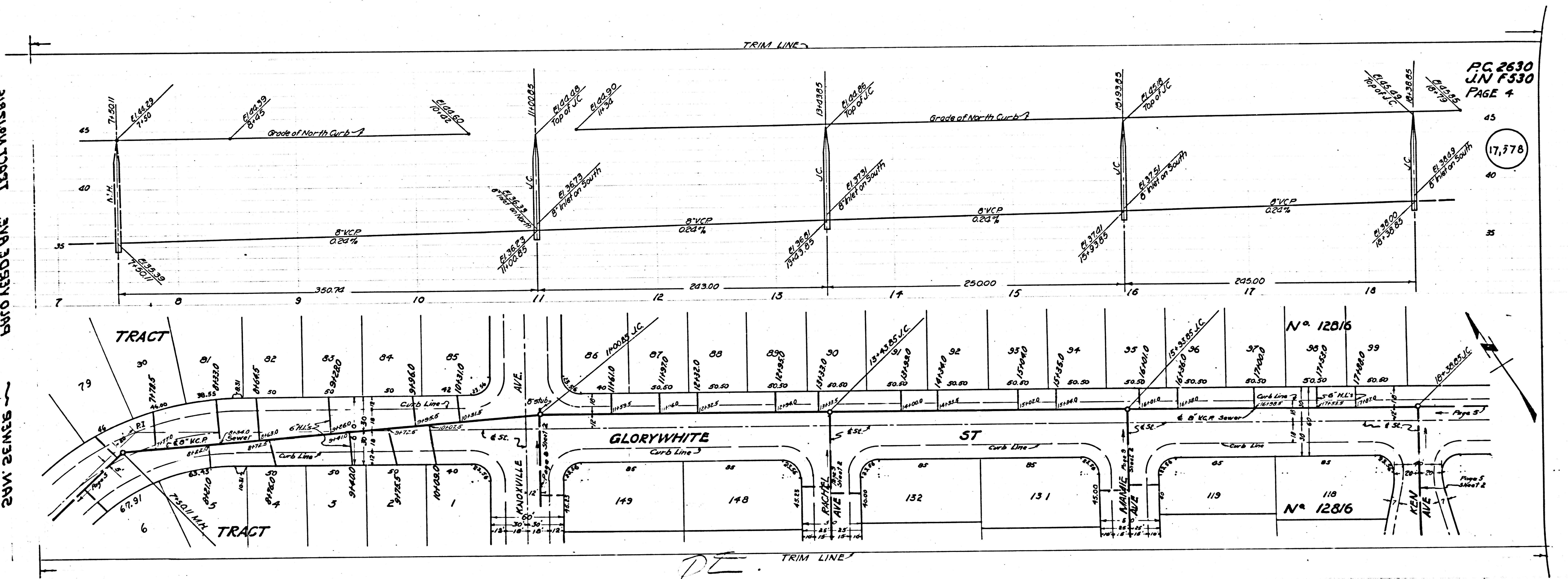
ON PLANT LOT LINE FROM
MAMIE AVE. TO
M.H. 214850



TRIM LINE

310

① 181514 TRACT
P.C. 5830
C.E.T. M.V.
① 241252 MAR
S.W. 241252 MAR
S.W. 241252 MAR
S.W. 241252 MAR



P.C. 2630
J.N. F530
PAGE 4

17,778

DE