

**BLDG. DIST. 6 EAST LOS ANGELES**

PROFILE, ALIGNMENT AND GRADE OF  
**SANITARY SEWER**  
**TO BE CONSTRUCTED IN**  
**DAVIE AVENUE**  
**(A PRIVATE STREET)**

PAGE 1  
 P.C. 2646 J.N. F551

(17,117)

**PRIVATE CONTRACT NO. 2646**  
**W.S. 36**  
**ONE SHEET**

SCALE: VERT: 1"=4'  
 HORIZ: 1"=40' JANUARY, 1953

PREPARED IN THE OFFICES OF  
**CENTRAL MANUFACTURING DISTRICT INC.**  
 CHECKED AND APPROVED BY *Charles C. Miller*  
 REG. C.E. NO. 122

FOR LEGEND SEE PLAN NO. S-a-64

GRADES TO WHICH THIS IMPROVEMENT IS TO BE CONSTRUCTED ARE SHOWN ON PLANS AND PROFILES. GRADE POINTS FOR TOP OF CURBS, CENTER LINE OF STREETS OR CENTER LINE OF ALLEY ARE SHOWN BY CIRCLES ON PROFILES. AT ALL POINTS BETWEEN DESIGNATED POINTS THE GRADE SHALL BE ESTABLISHED SO AS TO CONFORM TO A STRAIGHT LINE DRAWN BETWEEN SAID DESIGNATED POINTS. ELEVATIONS ARE IN FEET ABOVE U.S.G.S. DATUM OR MEAN SEA LEVEL.

THIS DRAWING AND THE DATA HEREON ARE HEREBY MADE A PART OF THE SPECIFICATIONS. WORK SHALL BE CONSTRUCTED ACCORDING TO SPECIFICATIONS ON FILE IN THE OFFICE OF THE COUNTY ENGINEER AND SHALL BE PROSECUTED ONLY IN THE PRESENCE OF COUNTY ENGINEER.

BEFORE WORK CAN BE STARTED THE CONTRACTOR MUST OBTAIN A PERMIT TO EXCAVATE IN COUNTY STREETS FROM THE L.A. COUNTY ROAD DEPT. 108 W. 2nd ST. AND MAKE A DEPOSIT WITH THE COUNTY ENGINEER 735 L.A. COUNTY ENGINEERING BLDG SUFFICIENT TO COVER THE COST OF CONSTRUCTION, INSPECTION AND RECORD PLANS.

APPROVAL OF THIS PLAN BY THE COUNTY OF LOS ANGELES DOES NOT CONSTITUTE A REPRESENTATION AS TO THE ACCURACY OF THE LOCATION OF, OR THE EXISTENCE OR NON-EXISTENCE OF ANY UNDERGROUND UTILITY PIPE, OR STRUCTURE WITHIN THE LIMITS OF THIS PROJECT. THIS NOTE APPLIES TO ALL SHEETS.

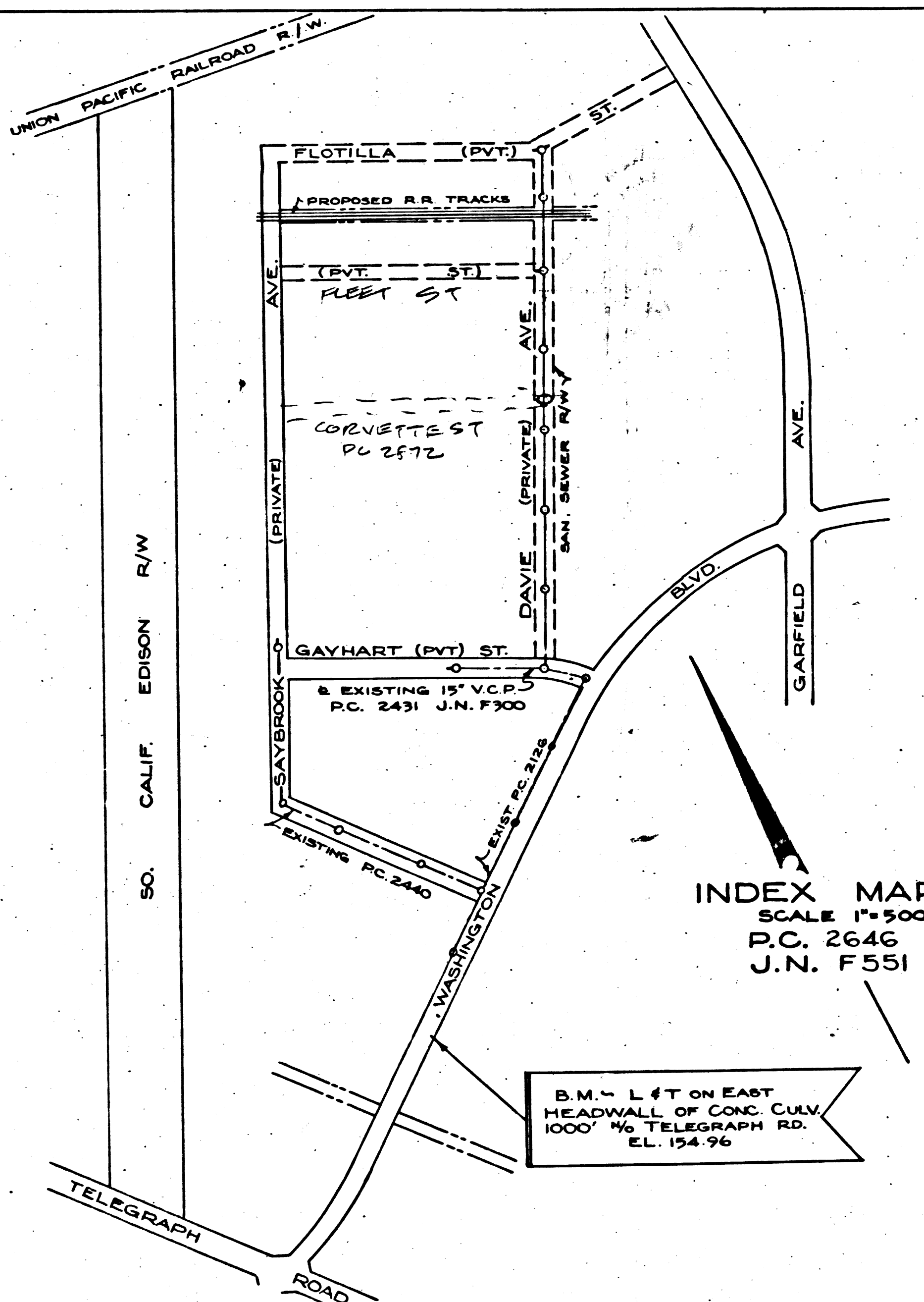
**COUNTY OF LOS ANGELES, CALIFORNIA**  
 APPROVED, **WILLIAM J. FOX, COUNTY ENGINEER**  
 BY *W. J. Fox*  
 CHIEF DEPUTY

APPROVED, **A.M. RAWN**  
 CHIEF ENGR. CO. SAN. NO. 2  
 BY *A.M. Rawn*  
 OFFICE ENGINEER

CHECKED BY: *Robert E. Kuby* 5-18-53  
 OFFICE OF COUNTY ENGINEER, REG. C.E. NO. 7860

NOTE:  
 NO REPRESENTATIVE OF THE COUNTY ENGINEER WILL SURVEY OR LAYOUT ANY PORTION OF THE WORK.  
 THE OWNER OR HIS AUTHORIZED REPRESENTATIVE SHALL FURNISH THE COUNTY ENGINEER WITH GRADE SHEETS AND STATIONS FOR ALL 'V' BRANCHES AND SHALL FURNISH STAKES FOR THEM AT THEIR PROPER LOCATIONS WITH STATIONING PLAINLY MARKED. ANY CHANGE IN LOCATION SHALL BE REQUESTED IN WRITING BY THE OWNER OR HIS REPRESENTATIVE. NO REVISIONS SHALL BE MADE IN THESE PLANS WITHOUT APPROVAL OF THE COUNTY ENGINEER.

1. USE STANDARD MANHOLE FRAMES AND COVERS, S-a-117
2. USE STANDARD STRENGTH PIPE EXCEPT AS NOTED.
3. USE CEMENT MORTAR FOR ALL VITRIFIED CLAY PIPE JOINTS.
4. RESURFACE ALL TRENCH WITHIN PAVED AREA TO MEET L.A. COUNTY ROAD DEPT. REQUIREMENTS.
5. ENCASE FOUR FEET OF SEWER AT POINTS OF INTERFERENCE WITH POLES, S-a-119
6. ALL STRUCTURES SHALL BE BRICK SEWER STRUCTURES, S-a-104
7. PROVIDE STAKES ON THE PROPERTY LINES OR PROPERTY LINES PRODUCED AT RIGHT ANGLES TO THE SEWER LINE AT THE CENTER LINE OF EACH MANHOLE.
8. FOR ALLOWABLE LEAKAGE TEST, USE FORMULA NO. 1, SPEC. SEC. 51



**INDEX MAP**  
 SCALE 1"=500'  
 P.C. 2646  
 J.N. F551

SHEET NO.	PAGES
1	4

Before knowing into any existing structure and before final acceptance of July 20th, County Engineer's District should be notified in order that required inspection may be made.

*Robert E. Kuby* 5-18-53

RECEIVED  
 JUN 22 1953  
 L.A. COUNTY ENGINEER  
 SANITATION DIVISION

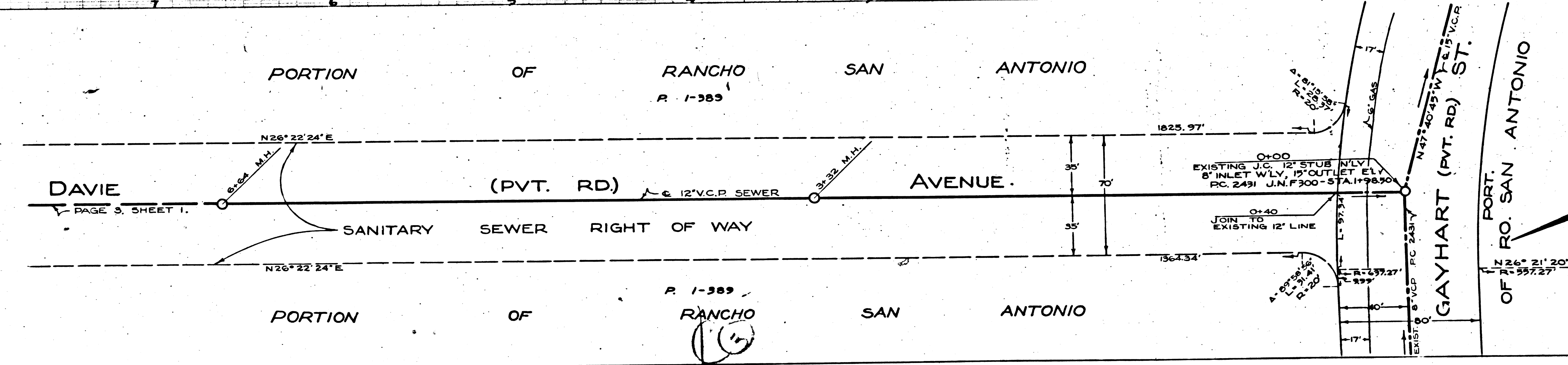
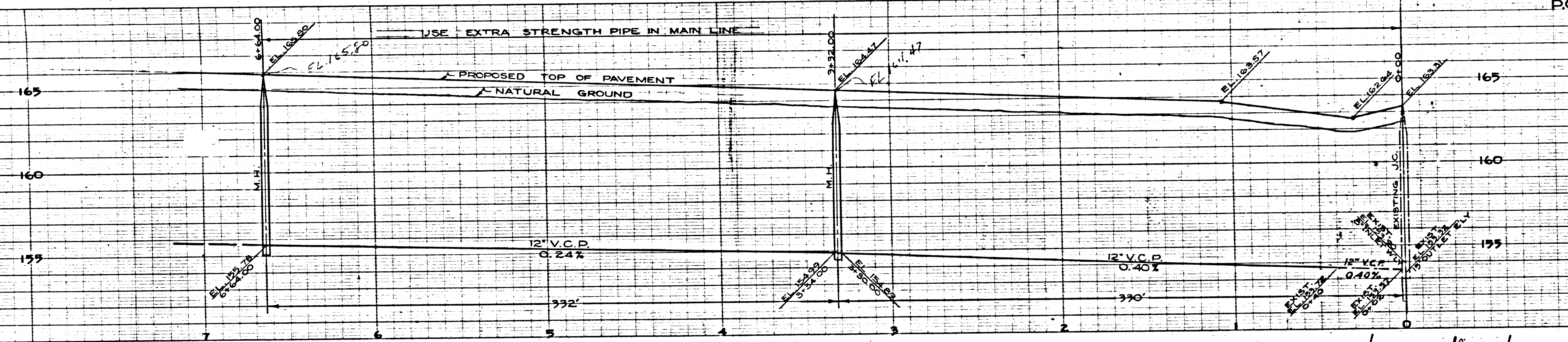
17-117  
 DAVIE AVENUE  
 (S. 113-53)  
 J.N. F551

NEW 1/2" DIA. 10' LONG  
NEW 1/2" DIA. 10' LONG  
NEW 1/2" DIA. 10' LONG  
NEW 1/2" DIA. 10' LONG

PC.2646 J.N.F551  
PAGE 2

N. F. 551  
17.119

17.118

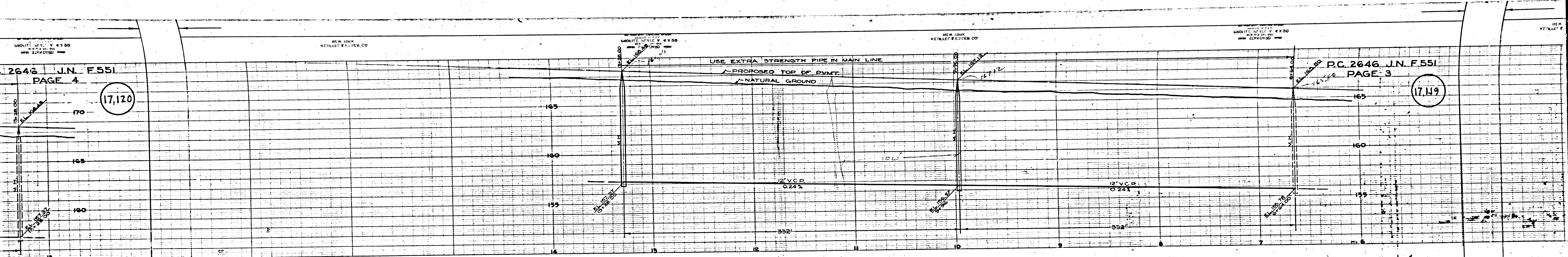


2646 J.N. F.551  
PAGE 4

P.C. 2646 J.N. F.551  
PAGE 3

(17,120)

(17,119)



PORTION OF RANCHO SAN ANTONIO

P. 1-389

N 26° 22' 24" E

DAVIE

(PVT. RD.)

AVENUE

SANITARY SEWER RIGHT OF WAY

N 26° 22' 24" E

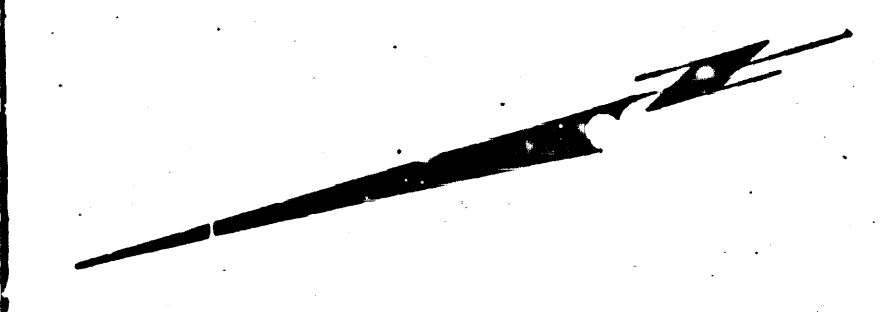
PORTION OF RANCHO SAN ANTONIO

P. 1-389

(12)

BY 30 M.M.  
PAGE 3, SHEET 1.

BY 30 M.M.  
PAGE 2, SHEET 1.



ON THIS PLAN, UNLESS OTHERWISE SPECIFIED, ALL DIMENSIONS ARE IN FEET AND DECIMALS THEREOF. THE PROPOSED WORK IS TO BE CONSTRUCTED IN ACCORDANCE WITH THE STANDARD SPECIFICATIONS FOR HIGHWAY CONSTRUCTION, LATEST EDITION, AS APPLICABLE.

MAN. JOHN KENNELT & SONS CO.

UNIFORM SCALE OF 1" = 50'

MAN. JOHN KENNELT & SONS CO.

P.C. 2646 J.N. F55  
PAGE 4

17,120

1 DAVIE AVE.

PC 2646

J.N. F55

1

