

PUENTE BLDG. DIST. 2

Trim Line 7

PROFILE, ALIGNMENT AND GRADE OF
SANITARY SEWERS
TO BE CONSTRUCTED IN
TRACT NO. 19036

PRIVATE CONTRACT No. 2650
W. S. 37
ONE SHEET

SCALE: VERT. 1" = 4'
HORIZ. 1" = 40' APRIL 1953

Prepared in the Office of
BARNETT, HOBEN & SMITH

BY *Harold A. Smith*
M.S.C.E. No. 1270

FOR LEGEND SEE PLAN NO. S-a-64

NOTE:
Grades to which this improvement is to be constructed are shown on plans and profiles. Grade points for top of curbs, centerline of streets or center line of alley are shown by circles on profiles. At all points between designated points, the grade shall be established so as to conform to a straight line drawn between said designated points.
Elevations are in feet above U.S.G.S. datum or mean sea level.
This drawing and the data hereon are hereby made a part of the specifications.
Work shall be constructed according to specifications on file in the office of the County Engineer and shall be prosecuted only in the presence of the County Engineer.
Before work can be started the Contractor must obtain a permit to excavate in County streets from the L. A. County Road Department, 108 West 2nd Street, and make a deposit with the County Engineer, 733 L. A. County Engineering Building, sufficient to cover the cost of construction, inspection and record plans.
Approval of this plan by the County of Los Angeles does not constitute a representation as to the accuracy of the location of, or the existence or non-existence, of any underground utility, pipe or structure within the limits of this project. This note applies to all sheets.

COUNTY OF LOS ANGELES

Approved, WILLIAM J. FOX COUNTY ENGINEER Chief Engineer, County San. Dist. No. 15
By *W. J. Fox*
Chief Deputy

Approved A. M. BAWAN
By *A. M. Bawan*
Office Engineer

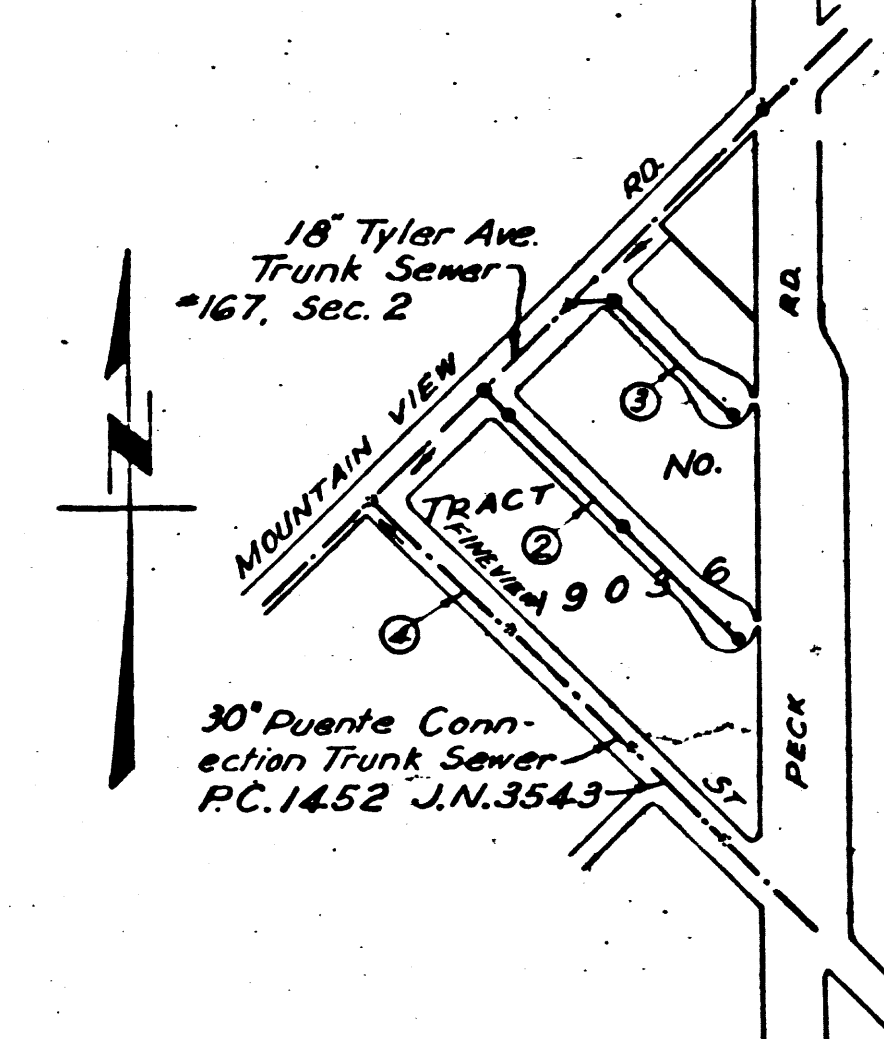
Checked By: *H. H. Swanson* 5-2-53
Office of County Engineer, Reg. C.E. No. 4222

- NOTE:
No representative of the County Engineer will survey or lay out any portion of the work.
The owner or his authorized representative shall furnish the County Engineer with grade sheets and stations for house laterals and "Y" branches and shall provide stakes for them at their proper locations with stationing plainly marked. Any change in location shall be requested in writing by the owner or his representative.
No revisions shall be made in these plans without approval of the County Engineer.
1. Use standard manhole frames and covers, S-a-117, except as noted.
 2. Use standard strength pipe.
 3. Use cement mortar for all vitrified clay pipe joints.
 4. Resurface all trench within paved area to meet L. A. County Road Dept. or Calif. State Highway Dept. Requirements in accordance with permit.
 5. Encase four feet of sewer at points of interference with poles, S-a-119.
 6. House Lateral to be constructed with inverts at property line 6 feet below curb grade.
 7. All structures shall be brick sewer structures, S-a-104, except as noted.
 8. Provide stakes on the property lines or property lines produced at right angles to the sewer line at the center of each manhole.
 9. Manhole tops in unimproved rights of way to be 6 in. above the finished grade of the ground at that point.
 10. For Allowable Leptage Test, Use Formula No. 1, Spec. Sec. 51.

B.M. S.G. 483 Elev. 259.743, L.&T.
in left curb of driveway to House No. 11280,
35 ft. S.W. of Fireview Rd 70 ft. W. of E. Peck Rd.

B.M. # 6 F.B.L.O. 247-1 Elev. 268.45
Spike in power pole # 198379E NW Corner
Mountain View and Klingerman Ave.
West side of Pole.

SHEET NO.	PAGES
1	1-4



INDEX MAP
SCALE 1/400
P.C. 2650 J.N. F 556

Before breaking into any existing structure and before final acceptance of this work, County Sanitation District should be notified in order that required inspection may be made.

checked 6-24-53 *McLennan*

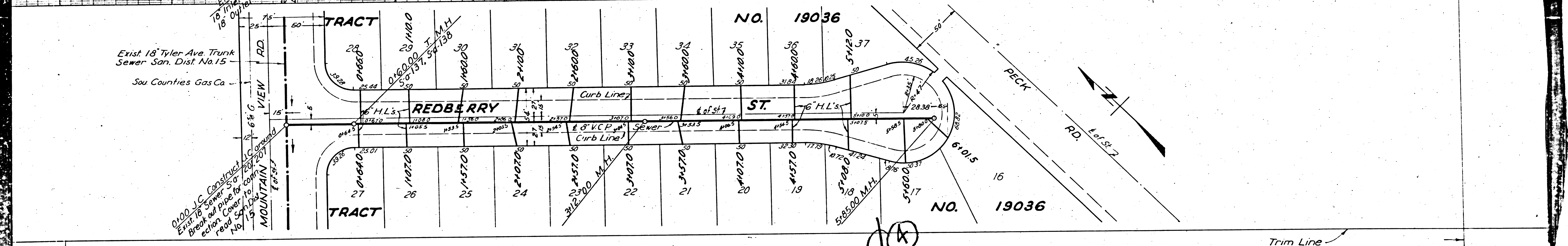
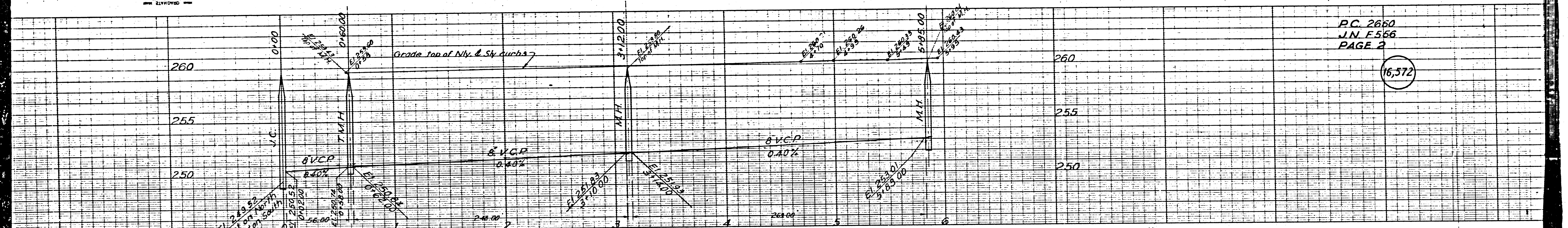
Trim Line

P.C. 2650
J.N. F 556
PAGE 1
16,571

Trim Line 7

P.C. 2660
J.N. F556
PAGE 2

16,572

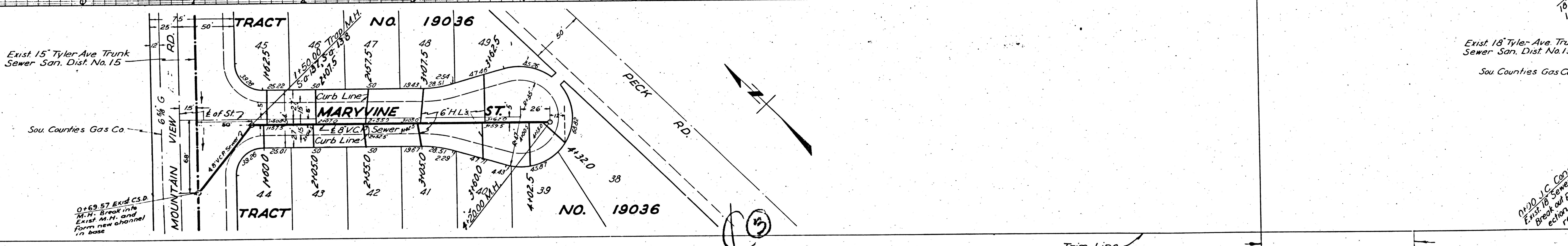
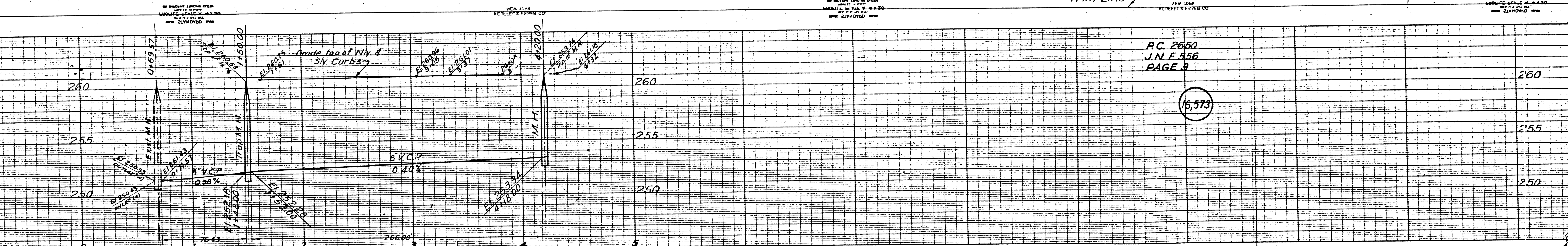


Trim Line

Trim Line

P.C. 2650
J.N.F. 556
PAGE 3

16,573



Exist 18 Tyler Ave. Trunk
Sewer San. Dist. No. 15
Sou. Counties Gas Co.

0+69.57 J.C. Const. Break in pipe for action cover to road No. 15

Trim Line

