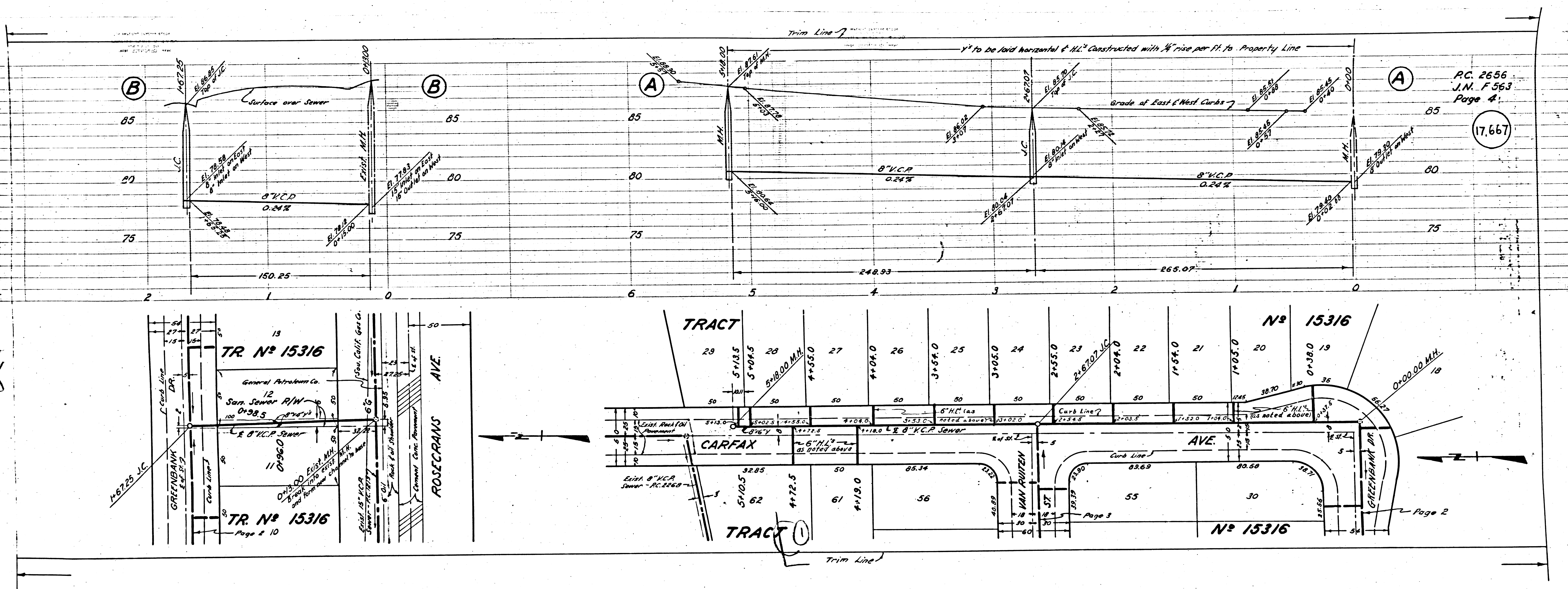


12345 43210

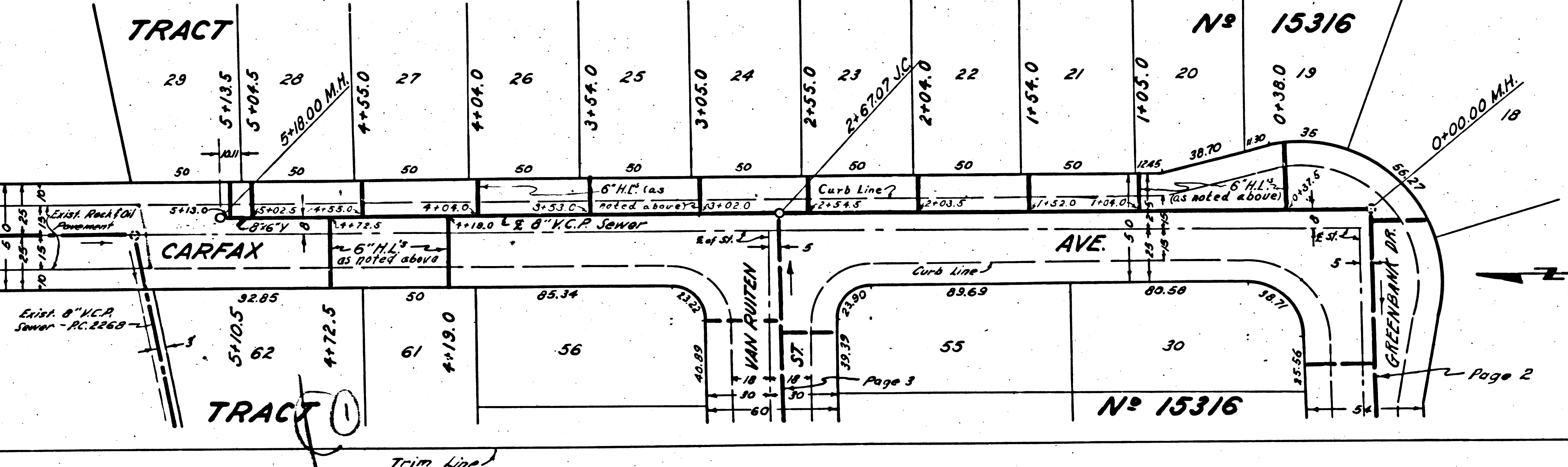
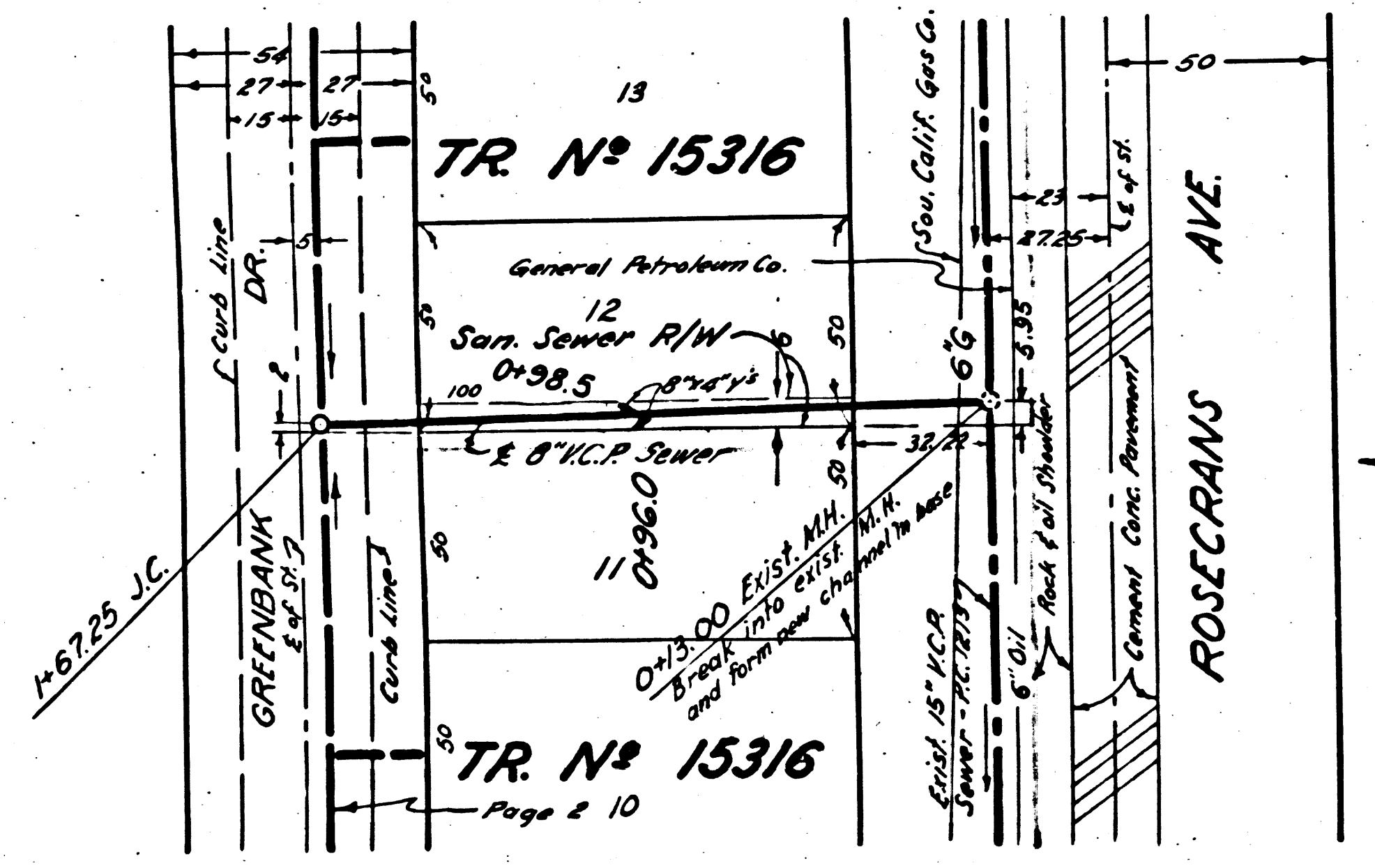
60 500 700 12345

PC 2656



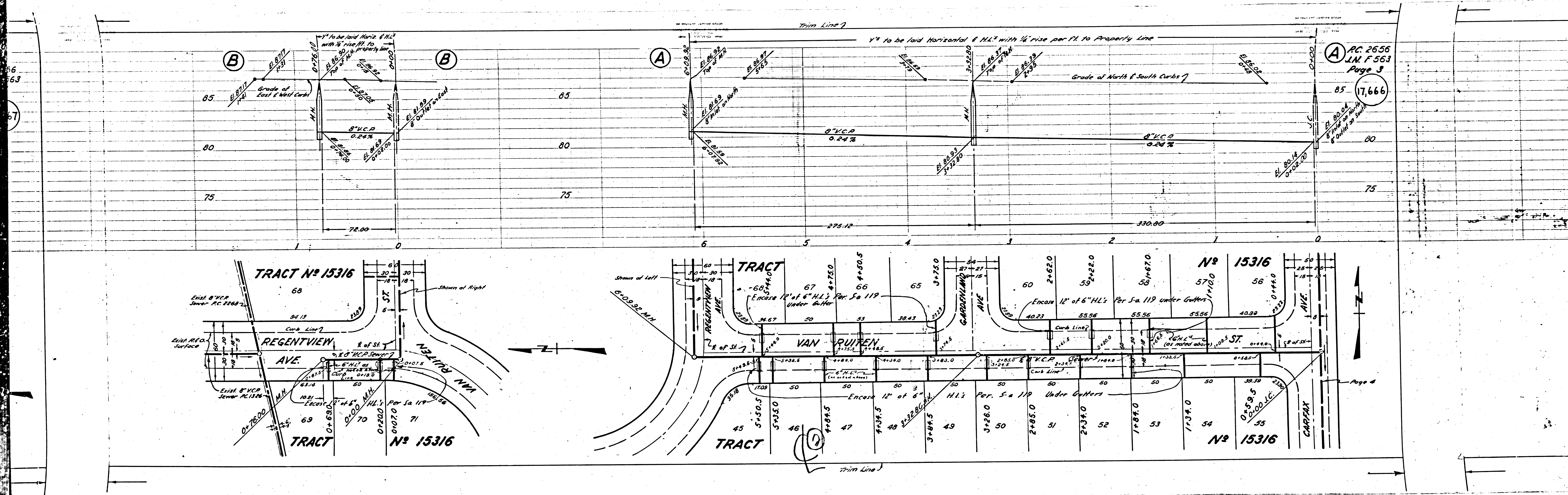
P.C. 2656
J.N. F 563
Page 4

(17.667)



Page 2

Page 3



PC 2656
J.M.F. 563
Page 3

17,666

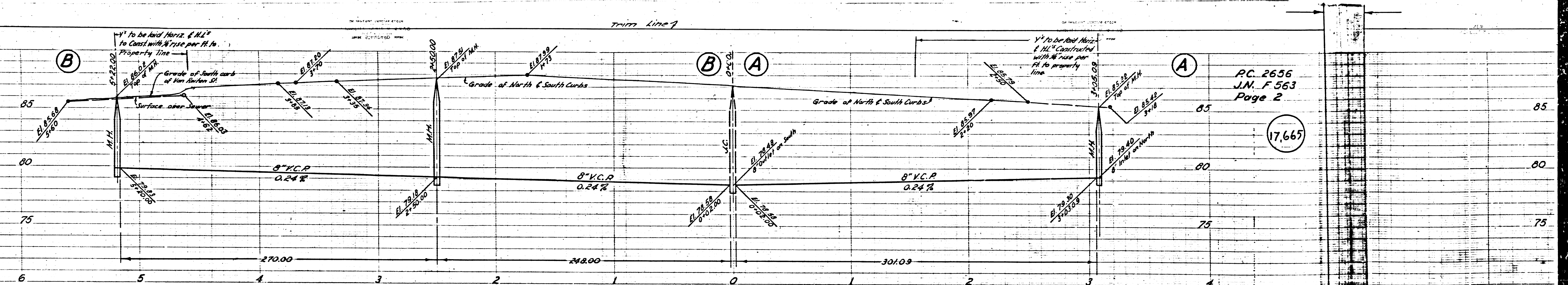
Page 4

PC 2656
J.M. F 563
Page 3

(17,666)

80

75



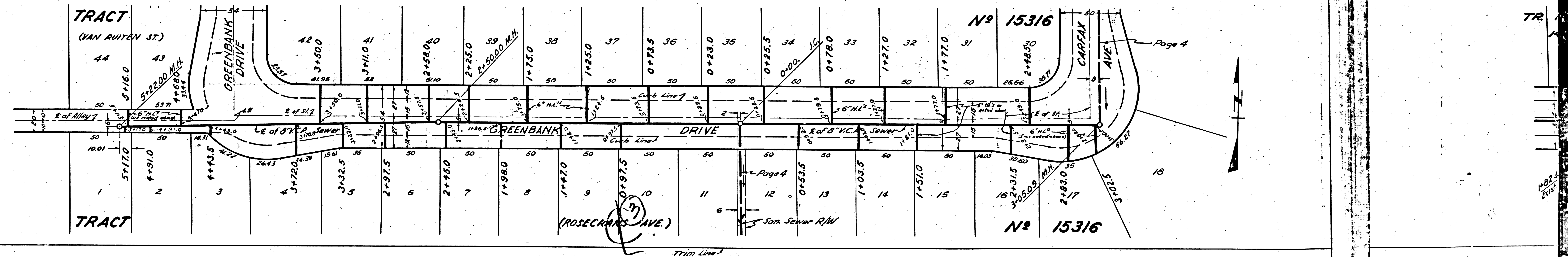
PC 2656
J.M. F 563
Page 2

(17,665)

85

80

75



Page 4

Page 4

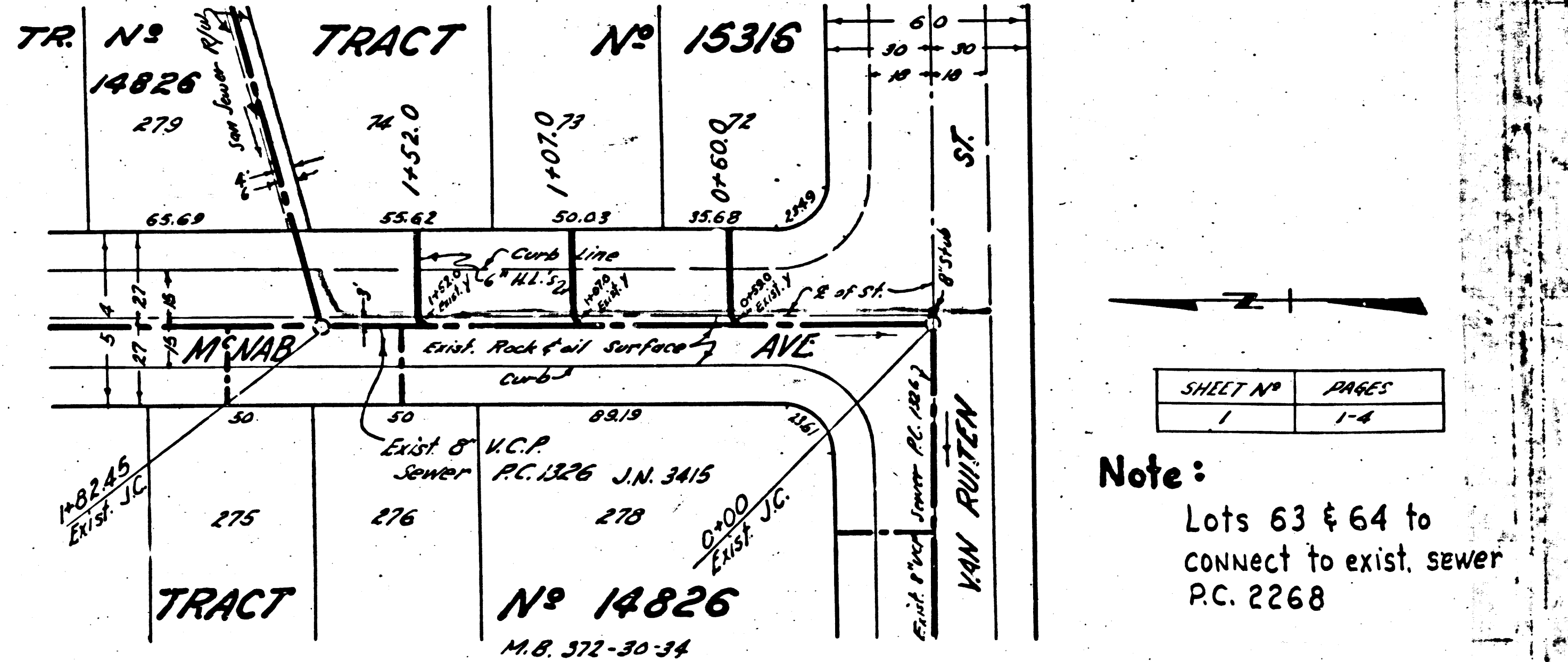
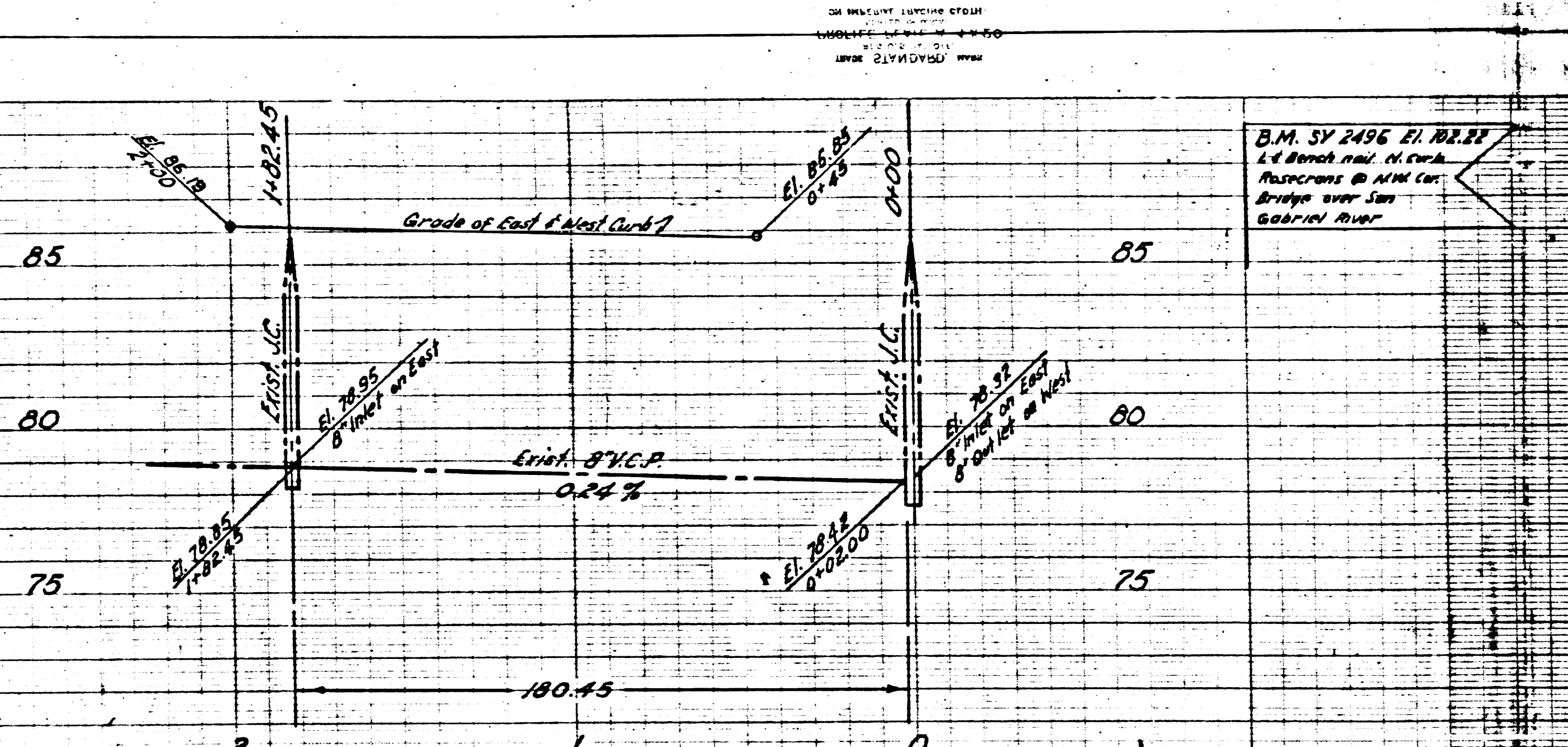
TR

18

18

PC 2656
J.M. F 563
Page 2

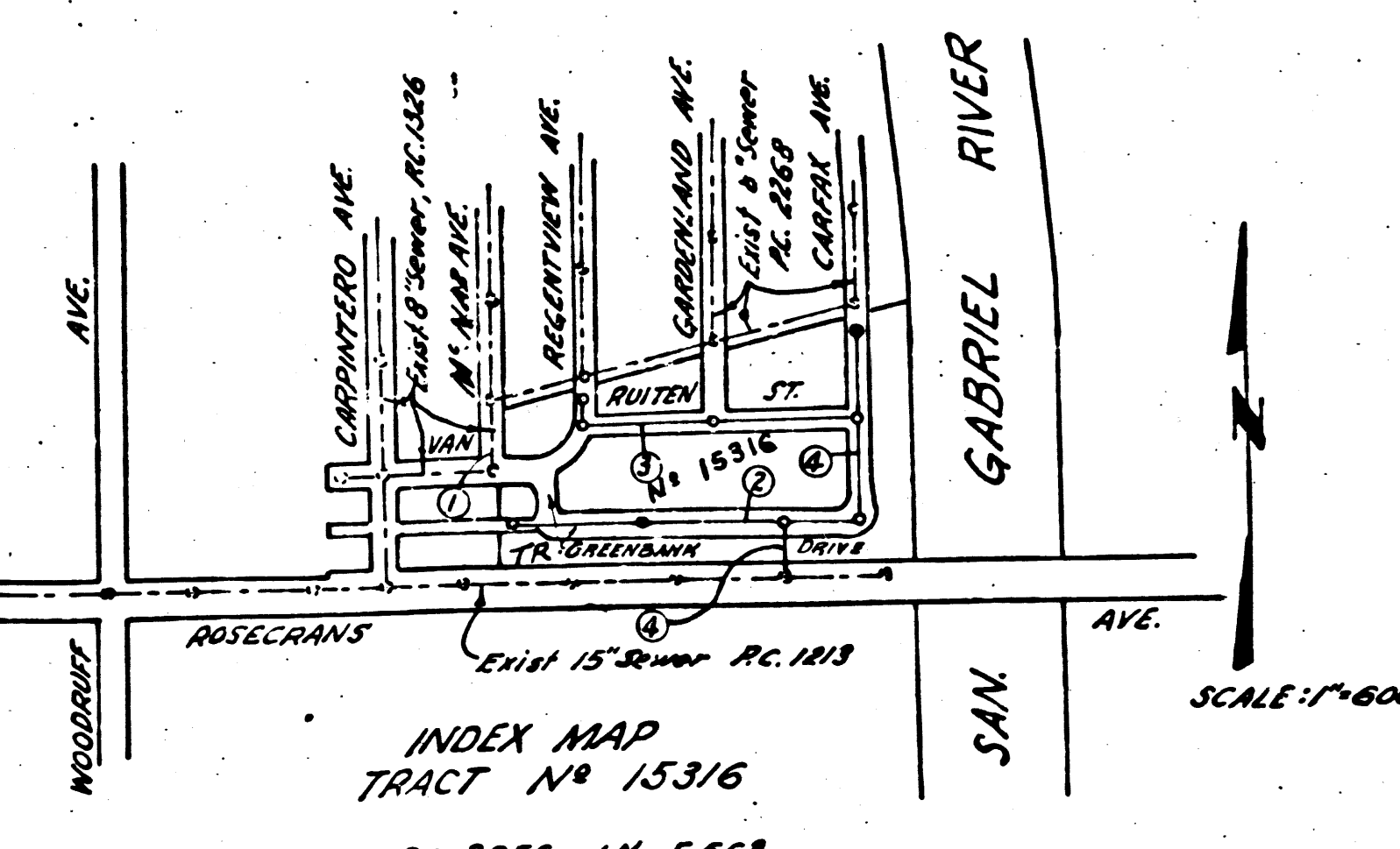
17,665



Trim Line 2

BELFLOWER BUILDING DIST #4

- NOTE:
- No representative of the County Engineer will survey or lay out any portion of the work.
 - The owner or his authorized representative shall furnish the County Engineer with grade sheets and stations for house laterals, and Y-branches and shall provide stakes for them at their proper locations with stationing plainly marked. Any change in location shall be requested in writing by the owner or his representative.
 - No revisions shall be made in these plans without approval of the County Engineer.
 - Use standard manhole frames and covers, S-a-117.
 - Use standard strength pipe except as noted.
 - Use cement mortar for all vitrified clay pipe joints.
 - Resurface all trench within paved area to meet L. A. County Road Dept. or Calif. State Highway Dept. Requirements in accordance with permit.
 - Encase four feet of sewer at points of interference with poles, S-a-119.
 - House laterals to be constructed with inverts at property line 6 feet below curb grade. Except as noted.
 - All structures shall be brick sewer structures, S-a-104.
 - Provide stakes on the property lines or property lines produced at right angles to the sewer line at the center of each manhole.
 - Manhole tops in unimproved rights of way to be 6 in. above the finished grade of the ground at that point.
 - For allowable leakage test use Formula No. 1, Specs. Sec. 51



Trim Line 3

PC 2656
J.N. F 563
PAGE 1
17,664

**PROFILE, ALIGNMENT AND GRADE OF
SANITARY SEWERS
TO BE CONSTRUCTED IN
TRACT NO. 15316
PRIVATE CONTRACT No. 2656
W. S. 33**

SCALE: VERT. 1" = 4'
HORIZ. 1" = 40'

APRIL 1953

Prepared in the Office of
KARL F. TUTTLE ENGINEERING COMPANY, Inc.

BY *Paul E. Tuttle*
REG. C.E. NO. 7618

FOR LEGEND SEE PLAN NO. S-a-64

NOTE:

Grades to which this improvement is to be constructed are shown on plans and profiles. Grade points for top of curbs, centerline of streets or center line of alley are shown by circles on profiles. At all points between designated points, the grade shall be established so as to conform to a straight line drawn between said designated points.

Elevations are in feet above U.S.G.S. datum or mean sea level.

This drawing and the data hereon are hereby made a part of the specifications.

Work shall be constructed according to specifications on file in the office of the County Engineer and shall be prosecuted only in the presence of the County Engineer.

Before work can be started the Contractor must obtain a permit to excavate in County streets from the L. A. County Road Department, 108 West 2nd Street, and make a deposit with the County Engineer, 733 L. A. County Engineering Building, sufficient to cover the cost of construction, inspection and record plans.

Approval of this plan by the County of Los Angeles does not constitute a representation as to the accuracy of the location of, or the existence or non-existence of, any underground utility, pipe or structure within the limits of this project. This note applies to all sheets.

COUNTY OF LOS ANGELES

Approved, WILLIAM J. FOX COUNTY ENGINEER
Chief Engineer, County San. Dist. No. 2

By *William J. Fox*
Ass't. Chief Deputy

Checked By: *William J. Fox*
Office of County Engineer, Reg. C.E. No. 7618

17,664

(4)

TRACT NO. 15316