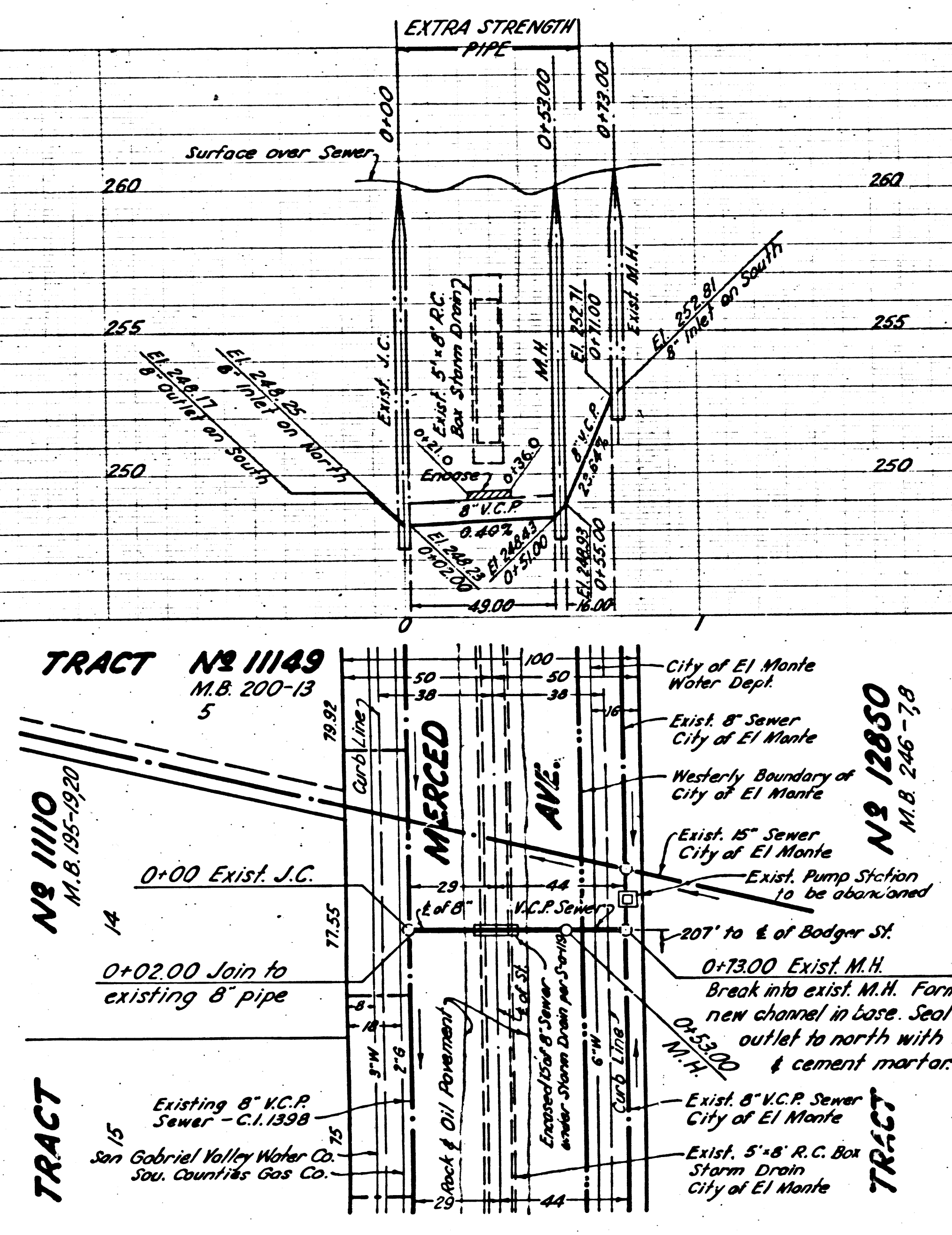


MERCED AVE CROSSING
PC 2665



B.M. M.E.-203, Elev. 260.222, F.D. 1728 to 104
 Merced Ave. & First Alley N. of Garvey Ave. S.W. Cor.
 Bl. Sph. in P.L. No. 41653 E.

NOTE: PROVIDE STAKES ON THE PROPERTY LINES OR PROPERTY LINES PRODUCED AT RIGHT ANGLES TO THE SEWER LINE AT THE CENTER LINE OF EACH MANHOLE. NO REPRESENTATIVE OF THE COUNTY ENGINEER WILL SURVEY OR LAY OUT ANY PORTION OF THE WORK. NO REVISIONS SHALL BE MADE IN THESE PLANS WITHOUT THE APPROVAL OF THE CITY ENGINEER AND THE COUNTY ENGINEER.

1. USE STANDARD MANHOLE FRAMES AND COVERS, S-a-117
2. USE STANDARD STRENGTH PIPE, EXCEPT AS NOTED
3. USE CEMENT MORTAR FOR ALL VITRIFIED CLAY PIPE JOINTS.
4. RESURFACE ALL TRENCH WITHIN PAVED AREA TO MEET L.A. COUNTY ROAD DEPT. REQUIREMENTS.
5. ENCASE FOUR FEET OF SEWER AT POINTS OF INTERFERENCE WITH POLES, S-a-119
6. ALL STRUCTURES SHALL BE BRICK SEWER STRUCTURES, S-a-104.

PAGE 1
 PC 2665
 J.N. F574

PROFILE, ALIGNMENT AND GRADE OF
SANITARY SEWERS
 TO BE CONSTRUCTED IN
MERCED AVENUE
 AT A POINT 207 FT. NORTH OF E OF BODGER ST.

PRIVATE CONTRACT NO. 2665
 W.S. 37
 ONE SHEET

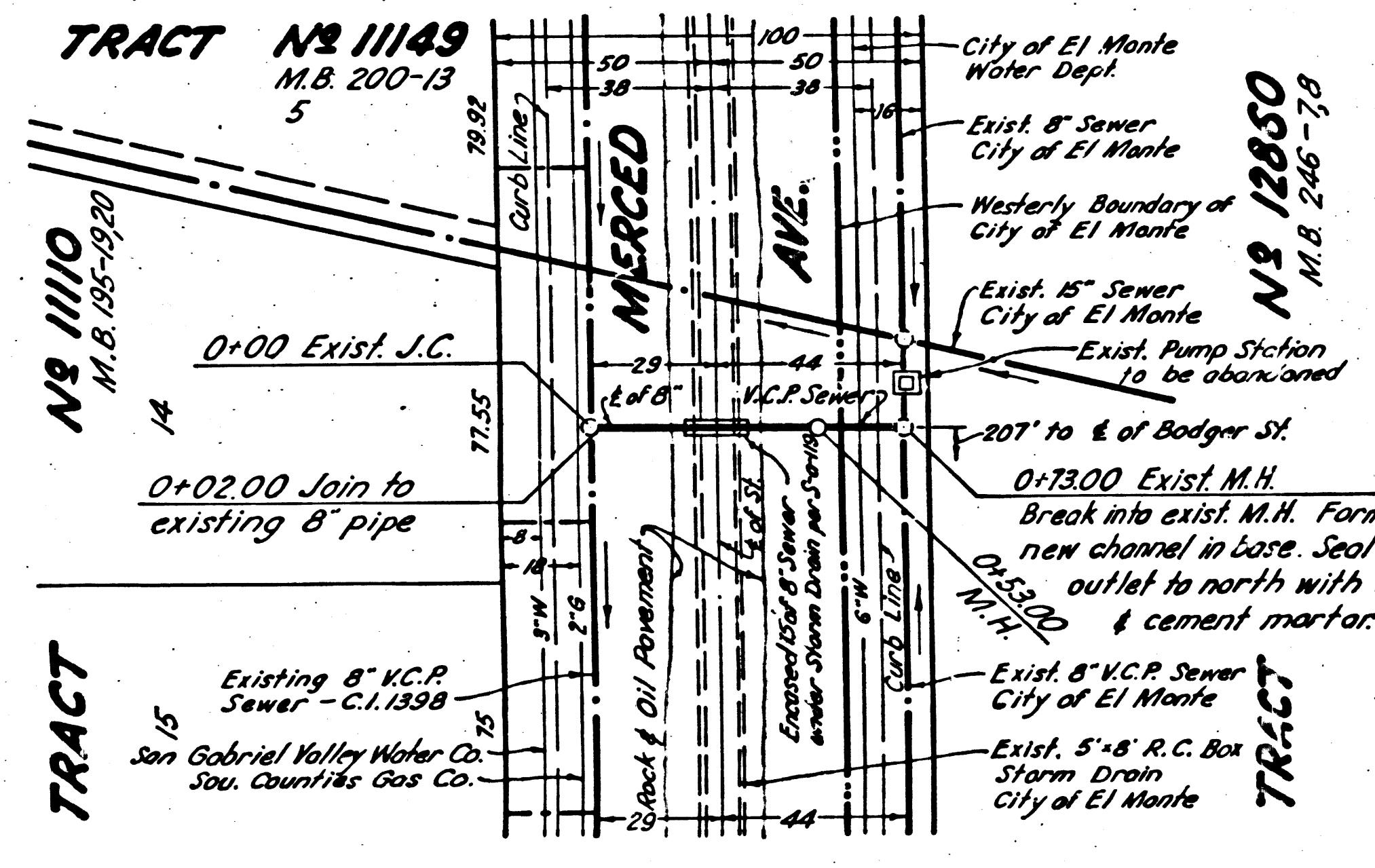
VERT. 1"=4'
 SCALE HORIZ. 1"=40'

MARCH 1953

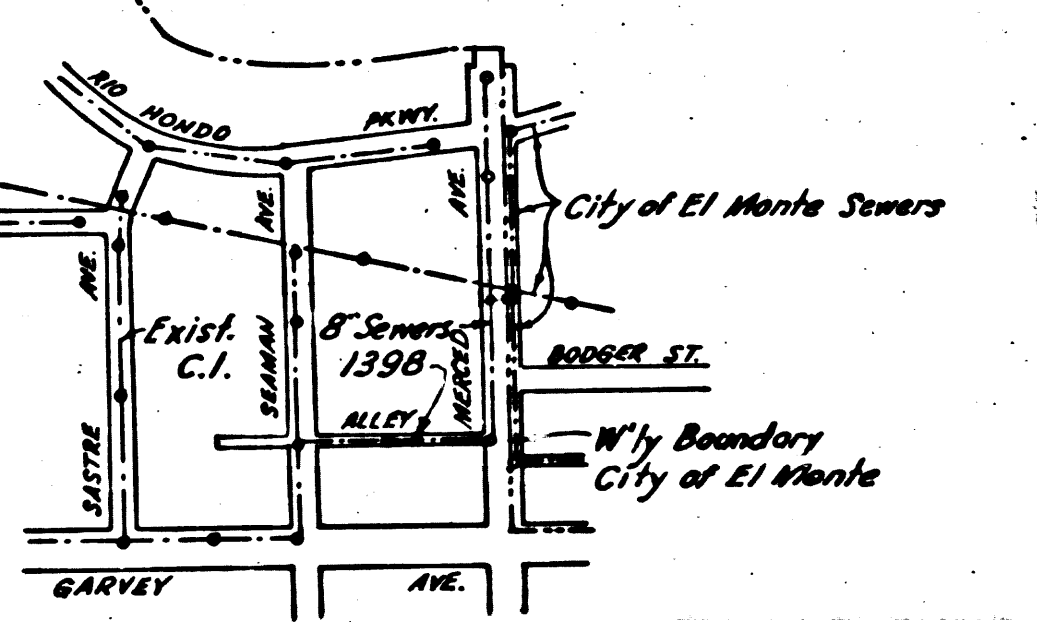
CITY OF EL MONTE
 BY *[Signature]* CITY ENGINEER

FOR LEGEND SEE PLAN NO. S-a-64

16,653



SHEET NO.	PAGES
1	1



INDEX MAP
 SCALE 1"=600'
 PC 2665 J.N. F574

Before breaking into any existing structure, and before final acceptance of this work, County Sanitation District should be notified in order that required inspection may be made.

NOTE: GRADES TO WHICH THIS IMPROVEMENT IS TO BE CONSTRUCTED ARE SHOWN ON PLANS AND PROFILE. AT ALL POINTS BETWEEN DESIGNATED POINTS THE GRADES SHALL BE ESTABLISHED SO AS TO CONFORM TO A STRAIGHT LINE DRAWN BETWEEN SAID DESIGNATED POINTS. ELEVATIONS ARE IN FEET ABOVE U.S.S. DATUM OR MEAN SEA LEVEL. THIS DRAWING AND THE DATA HEREON ARE HEREBY MADE A PART OF THE SPECIFICATIONS. WORK SHALL BE CONSTRUCTED ACCORDING TO SPECIFICATIONS ON FILE IN THE OFFICE OF THE COUNTY ENGINEER AND SHALL BE PROSECUTED ONLY IN THE PRESENCE OF THE COUNTY ENGINEER.

BEFORE WORK CAN BE STARTED THE CONTRACTOR MUST OBTAIN A PERMIT TO EXCAVATE IN COUNTY AND CITY STREETS FROM L.A. COUNTY ROAD DEPT. 108 W. 2ND ST. AND STREET SUPERINTENDANT OF EL MONTE, CALIFORNIA. IF WORK IS TO BE DONE IN A STATE HIGHWAY, A PERMIT MUST BE OBTAINED FROM THE STATE OF CALIFORNIA DIVISION OF HIGHWAYS, 120 So. SPRING ST.

APPROVAL OF THESE PLANS BY THE CITY OF EL MONTE AND THE COUNTY OF LOS ANGELES DOES NOT CONSTITUTE A REPRESENTATION AS TO THE ACCURACY OF THE LOCATION OR OF THE EXISTENCE OR NON-EXISTENCE OF ANY UNDERGROUND UTILITY PIPE OR STRUCTURE, WITHIN THE LIMITS OF THIS PROJECT.

COUNTY OF LOS ANGELES
 APPROVED, WILLIAM J. FOX, COUNTY ENGINEER
 BY *[Signature]* CHIEF DEPUTY
 CHECKED BY *[Signature]* 5-28-53
 OFFICE OF COUNTY ENGINEER, REG. CE. NO. 1860

RECEIVED
 JUN 22 1953
 L.A. COUNTY ENGINEER
 SANITATION DISTRICT

PC 2665
 J.N. F574

checked 7-7-53